

WRT Subtransactions

The Web Response Time agent tracks individual page requests as subtransactions and has supporting workspaces. You can break down the overall transaction into pieces such as .css, .jpg and .gif loads. Enabling subtransactions allows further insight into why a web page is slow to load—maybe a .jpg file is too big or a .jsp is taking too long to load.

To enable this functionality:

1. Edit the following configuration files:

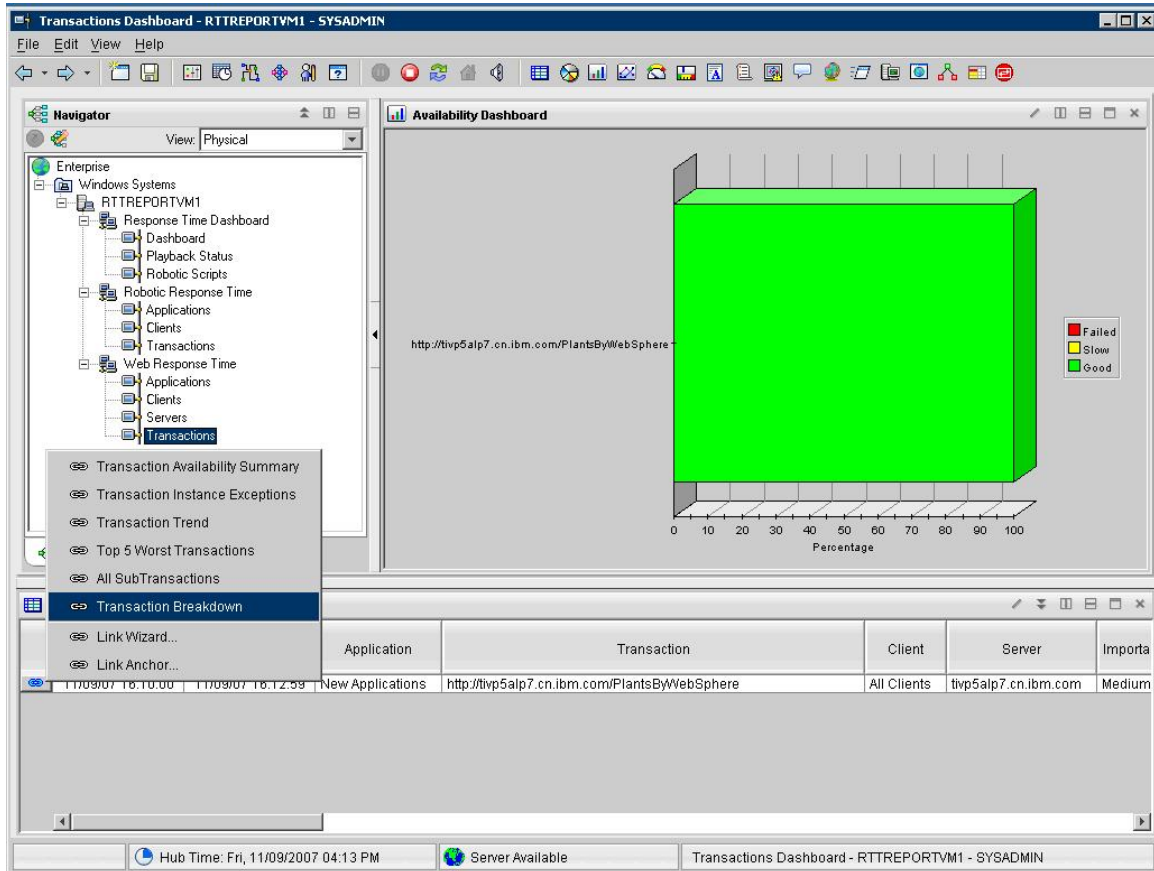
Set Variable	For Windows	For UNIX/Linux
KFC_HTTP_REPORT_OBJECTS to Y	TEMA base install>\tmaitm6\wrm\Analyzer\kfcmenv	<TEMA base install>\tmaitm6\wrm\kfcmen
SM3_LOG_HTTPOBJ to Y	<TEMA base install>\tmaitm6\wrm\WRM\collector\kflmenv	<TEMA base install>\tmaitm6\wrm\kflmenv

<TEMA> is the base installation directory for the monitoring agent installation.

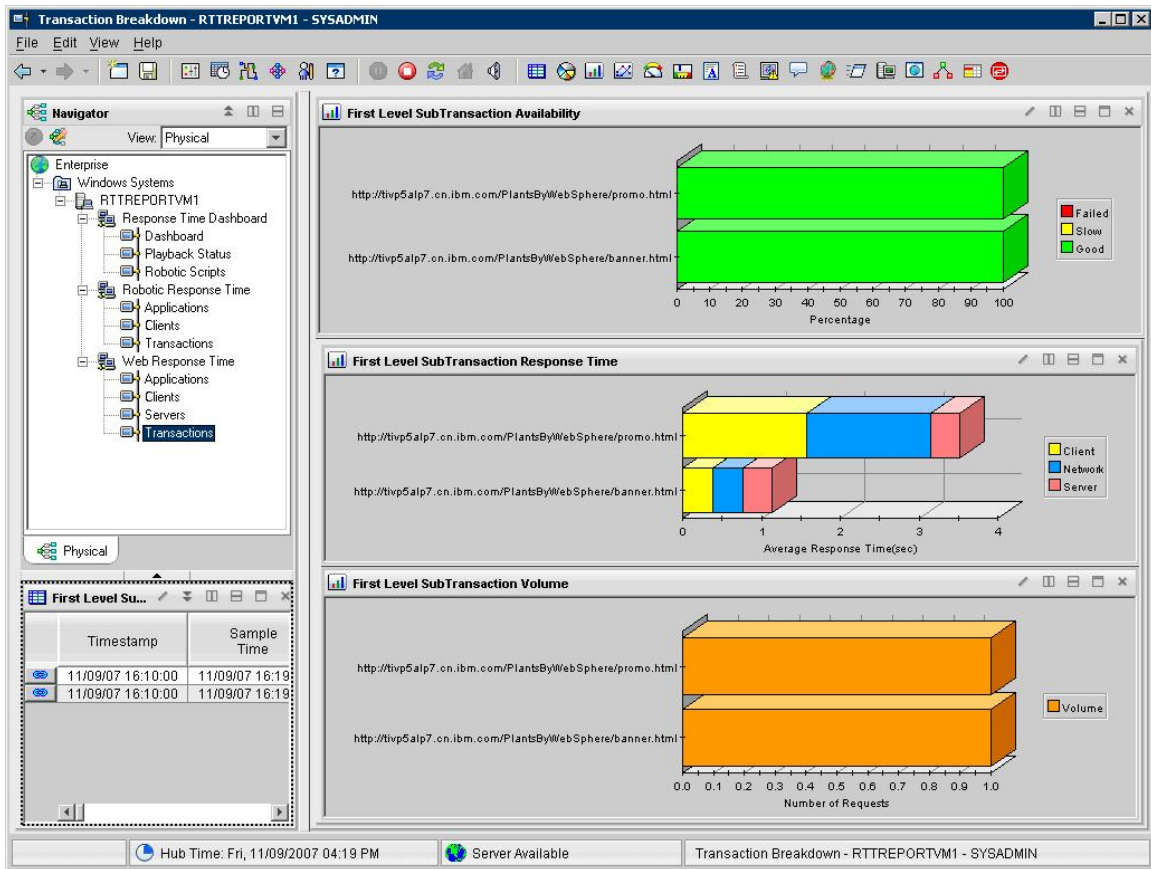
2. Restart the Web Response Time monitoring agent.

Your Transaction workspaces now have links to Transaction Breakdown and All Subtransactions workspaces, which show the page components of the selected Transaction.

For example: From the Transaction Dashboard, select **Transaction Breakdown**.



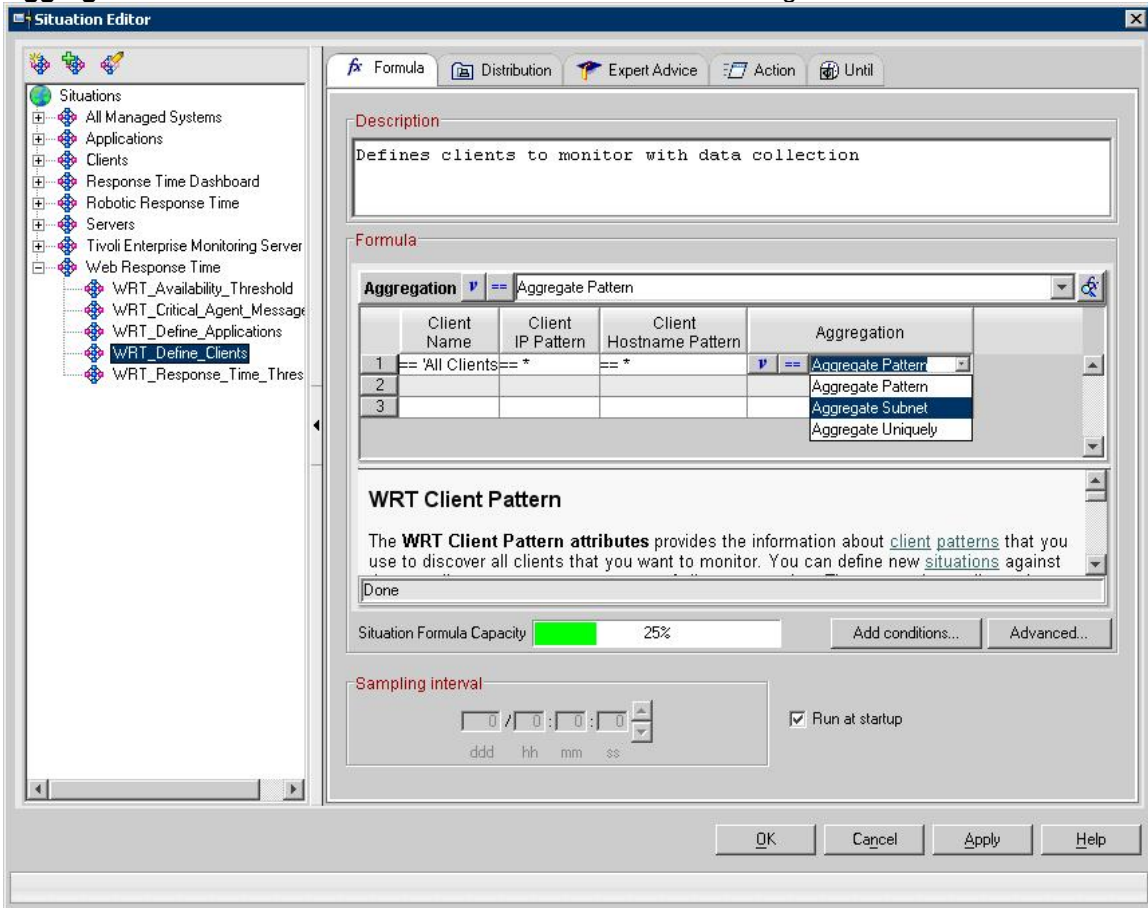
The software displays a page showing the page elements for the page you requested.



Reporting by WRT IP address subnet

The Web Response Time agent has a new configuration option in the Define Client situation for grouping data by IP address subnet. For example, if clients are coming from IP addresses **128.1.1.1** and **128.1.1.4** and you enable this feature, the software displays the collected data as **128.1.1.*** and with information for **128.1.1.1** and **128.1.1.4**. This allows you to reduce the number of Clients automatically without setting up new Client patterns.

To enable this feature, edit the WRT_Define_Clients situation's Aggregation column to **Aggregate Subnet** and click **OK**. You do not need to restart the agent.



WRT reports of HTTP failure percentages

WRT data collection now includes columns to calculate the percentage of failures for different HTTP return code types. These include **Successes Percentage** (percentage of 200s), **Redirections Percentage** (percentage of 300s), **Client Errors Percentage** (percentage of 400s), and **Server Errors Percentages** (percentages of 500s). No configuration is needed. All workspaces show application, transaction, client or server data will have these new columns in their tables.

national entage	Successes	Successes Percentage	Redirections	Redirections Percentage	Client Errors	Client Errors Percentage	Server Errors	Server Errors Percentage	Number of 403s	403s Percentage	Number of 404s	404s Percentage	Number of 500s	500s Percentage
0.000	0	0.000	1	100.000	0	0.000	0	0.000	0	0.000	0	0.000	0	0.00