



Rational. software



【2009 IBM開發者大會】

開發，不只玩**真**的！

「 Real Teams. Real Insights.
Real Results. ● REC 」

【2009 IBM開發者大會】
開發，不只玩**真**的！

劉正陽(Steven Liu)

台灣IBM公司軟體事業處
高級資訊工程師



Real Teams. Real Insights.
Real Results. REC

IBM

Rational. software

【2009 IBM開發者大會】
開發，不只玩**真**的！

不凡的策略 來自不凡的細節
--組織架構及流程分析

IBM Rational System Architect
(SA) 介紹

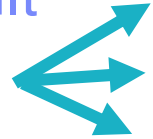


Real Teams. Real Insights.
Real Results. REC

Organizational Leaders are Regularly Faced with Difficult Decisions



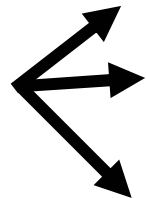
New Corporate Initiatives



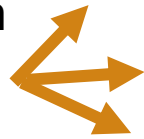
Risk Avoidance, Governance and Compliance



Business Process Improvement



IT Modernization and Investment Strategies

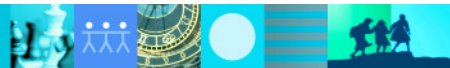
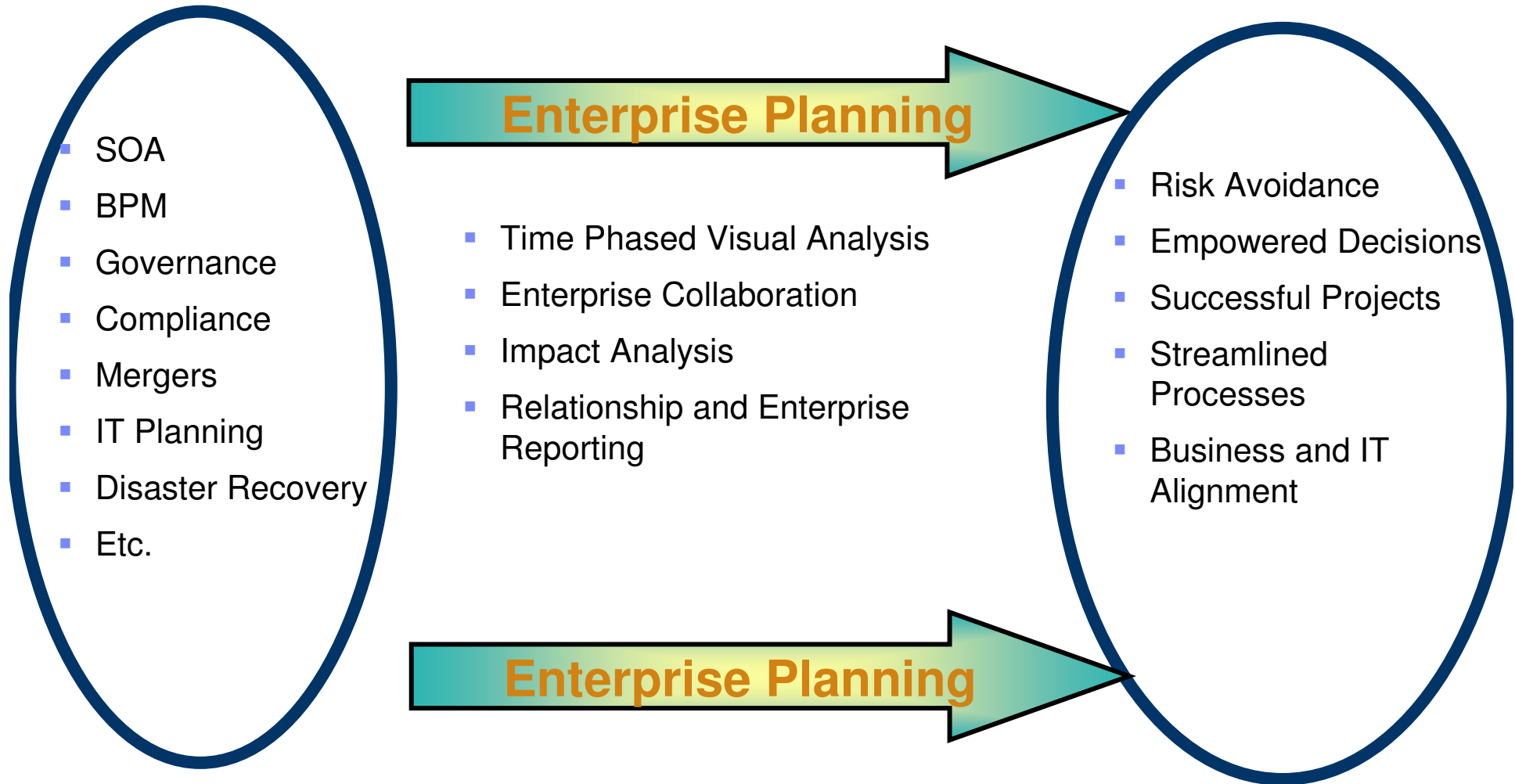


The Pathway to Success

- For 2008 and beyond organizations are **eyeing their targets**
 - ▶ New Projects, Solutions, and Initiatives
- To succeed in these complex environments you must minimize **disruption to current environment**
- Enterprise Architecture can provide a **set of consistent behaviors and practices that ensure success**
- Work with the “big picture” for
 - ▶ Collaboration
 - ▶ Risk Avoidance
 - ▶ Best Practices
 - ▶ Decision Support
 - ▶ Reuse



Telelogic Gets You There With Confidence



Telelogic Enterprise Architecture Solutions

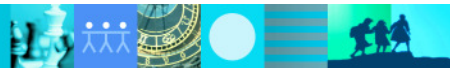
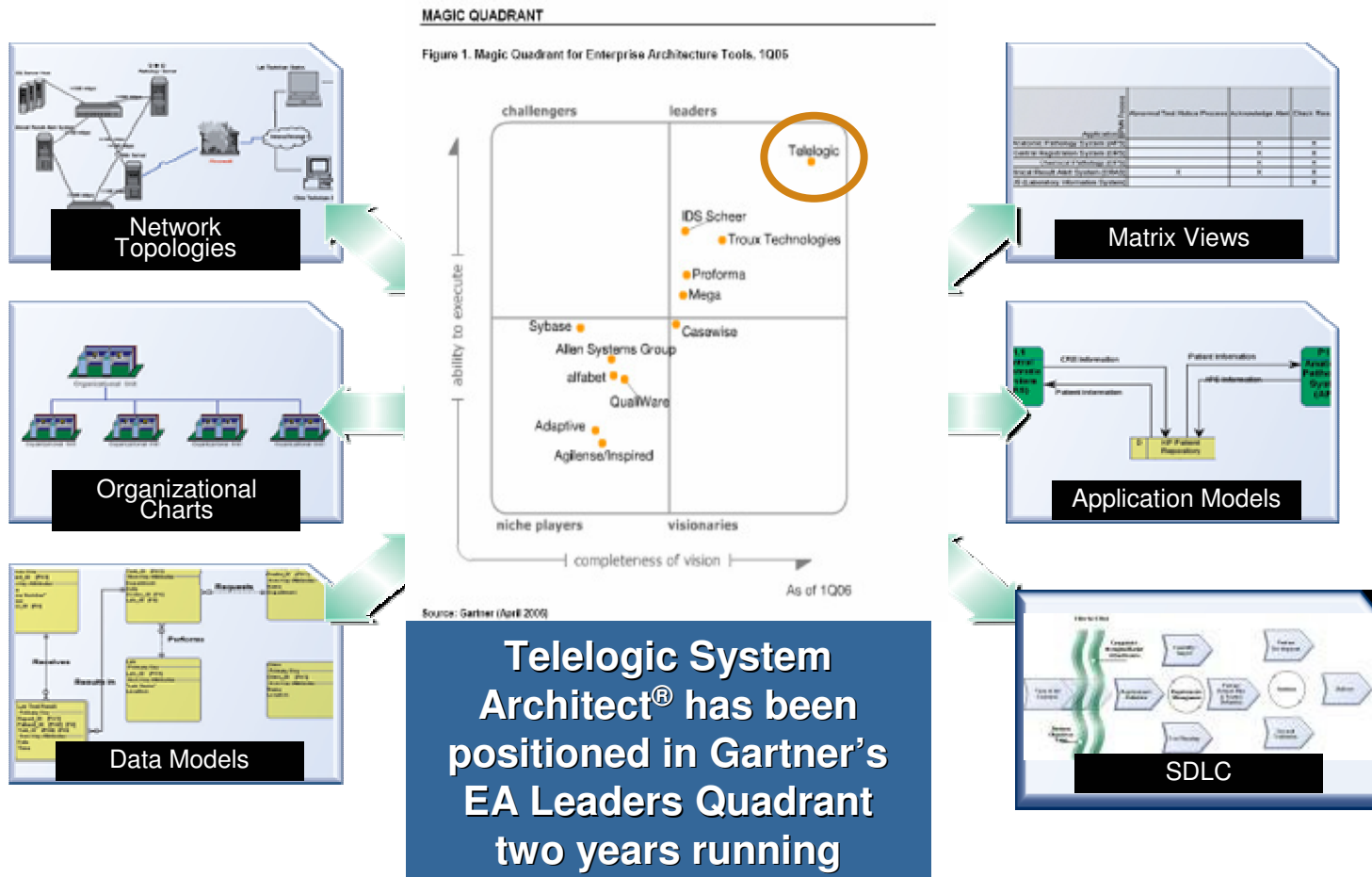


See Where You've Been
Know Where You are Going
Get There with Confidence

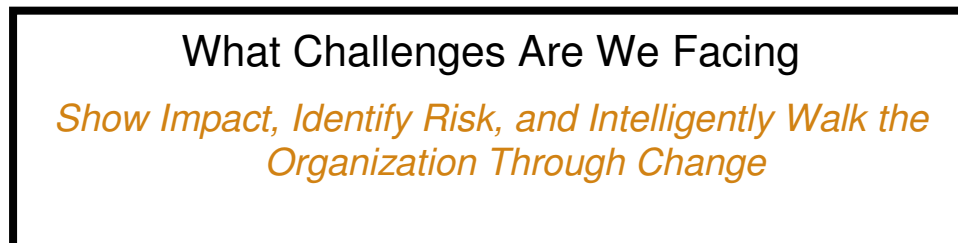
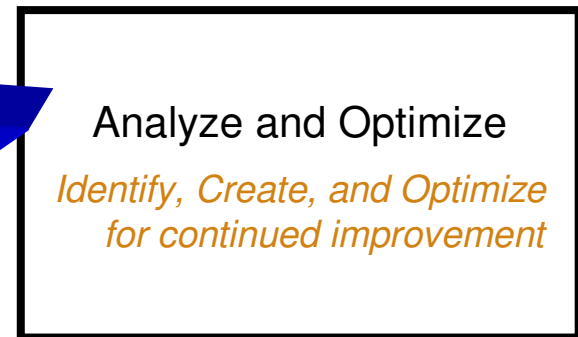
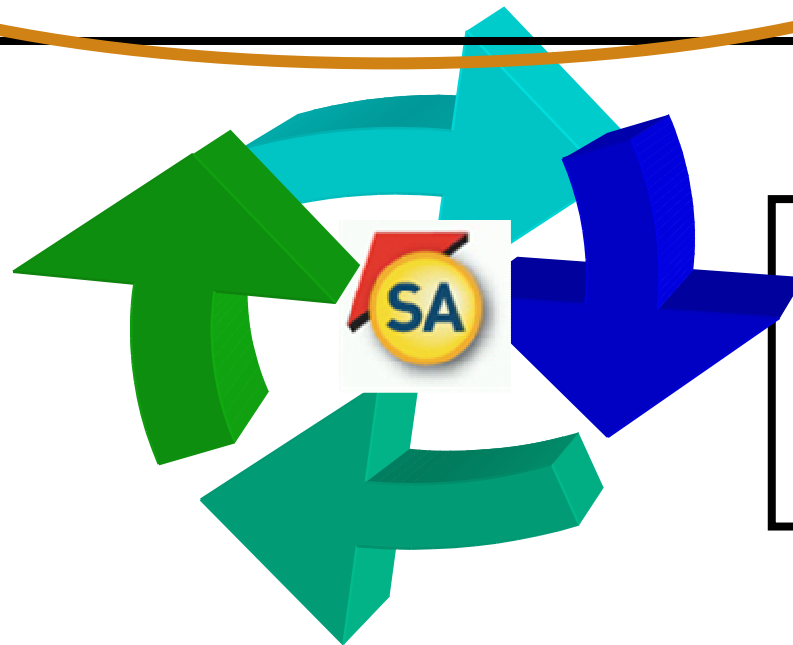
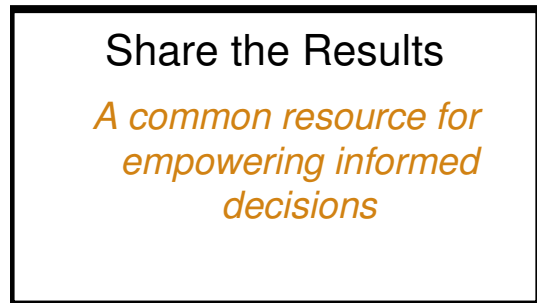
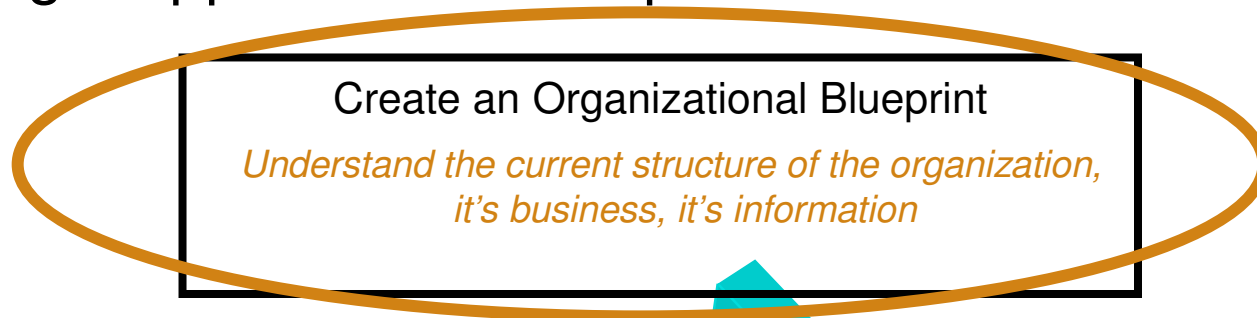


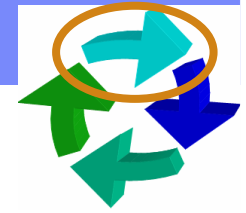
Telelogic System Architect

Leading Enterprise Architecture and Business Process Analysis Tool

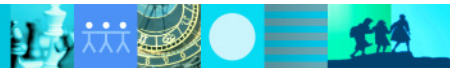
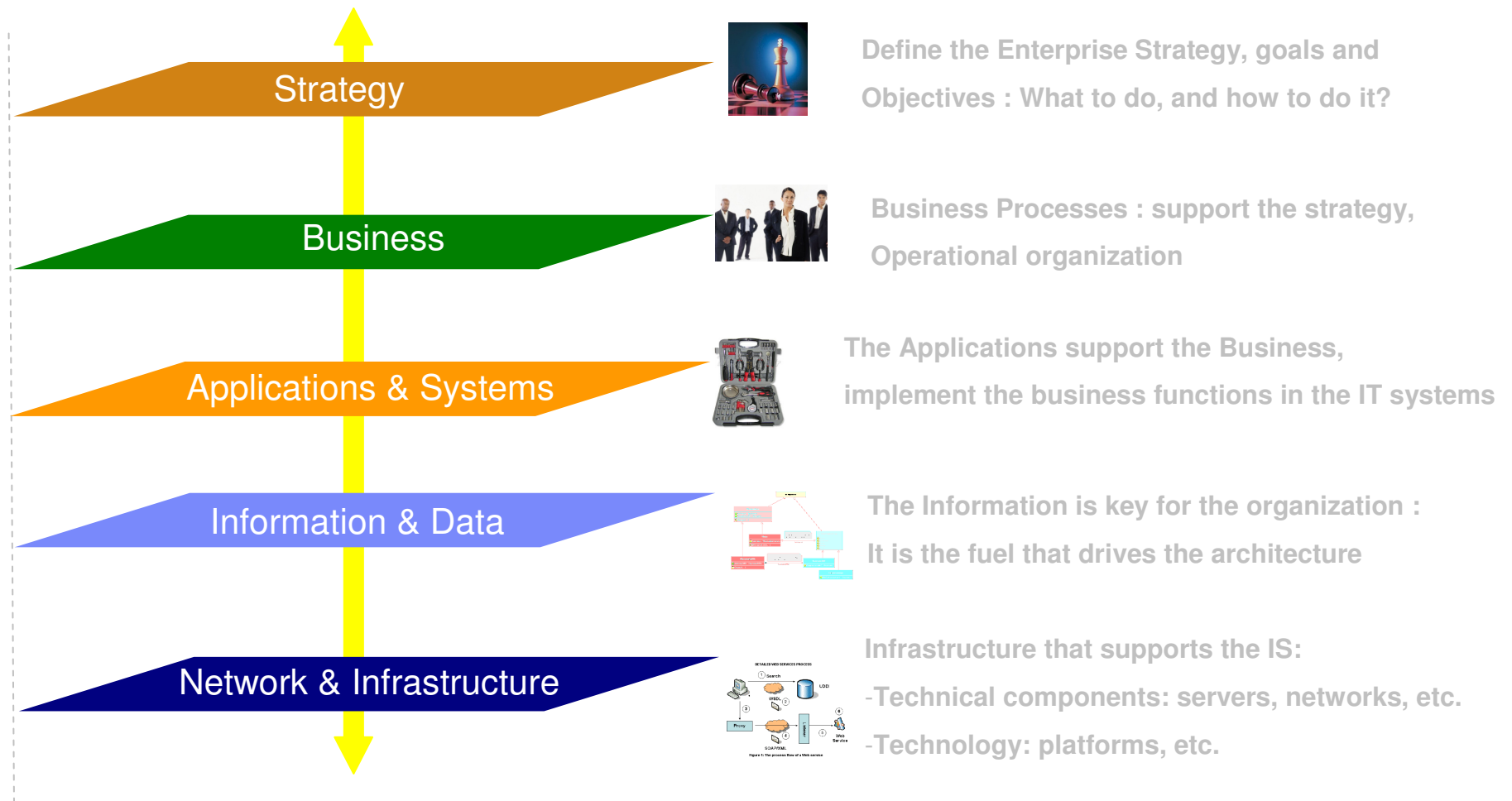


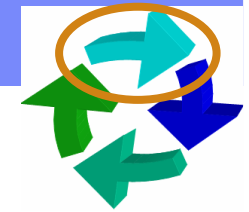
The Telelogic Approach to Enterprise Architecture



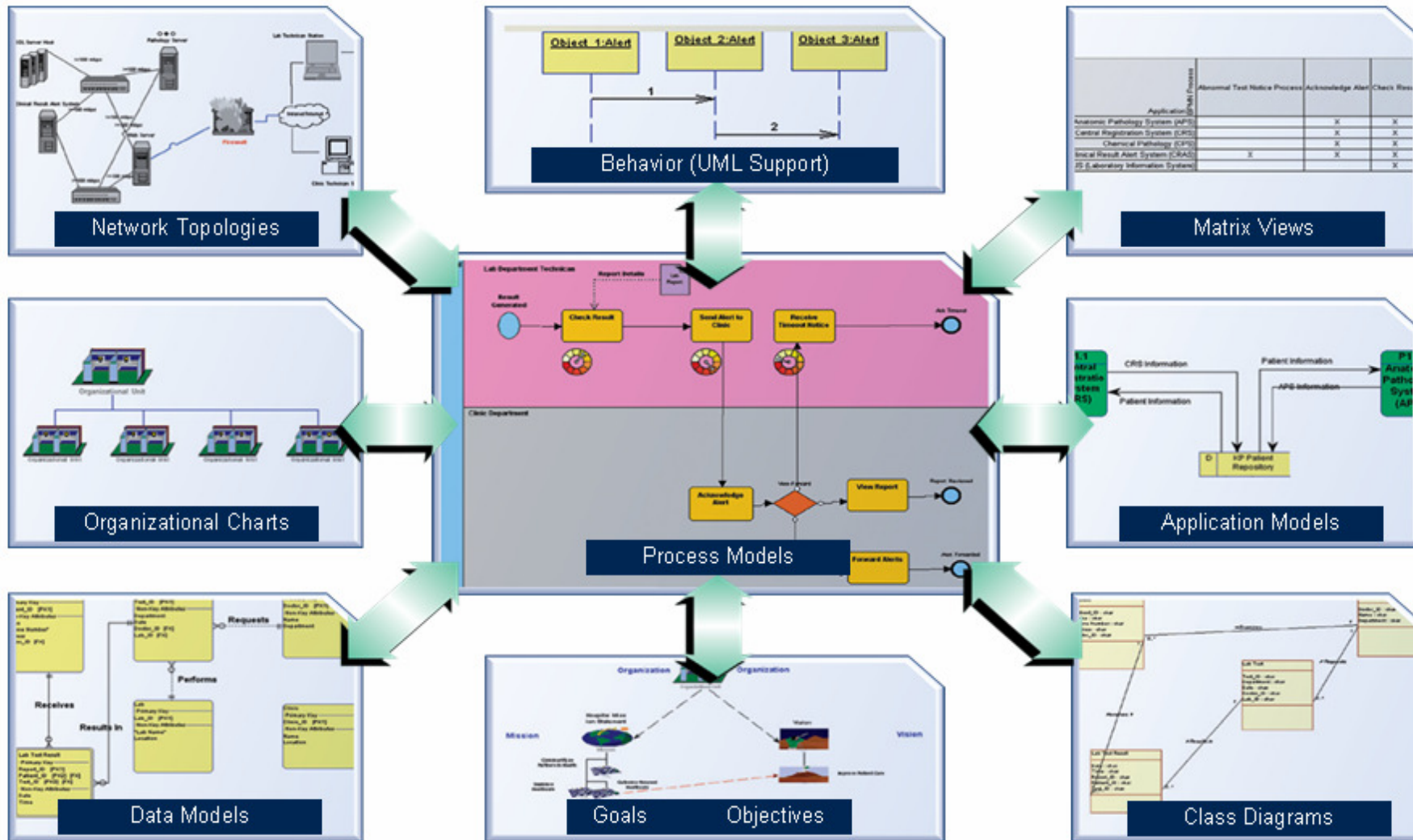


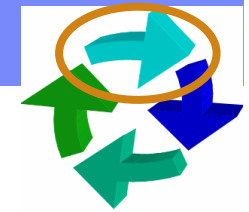
Enterprise Architecture





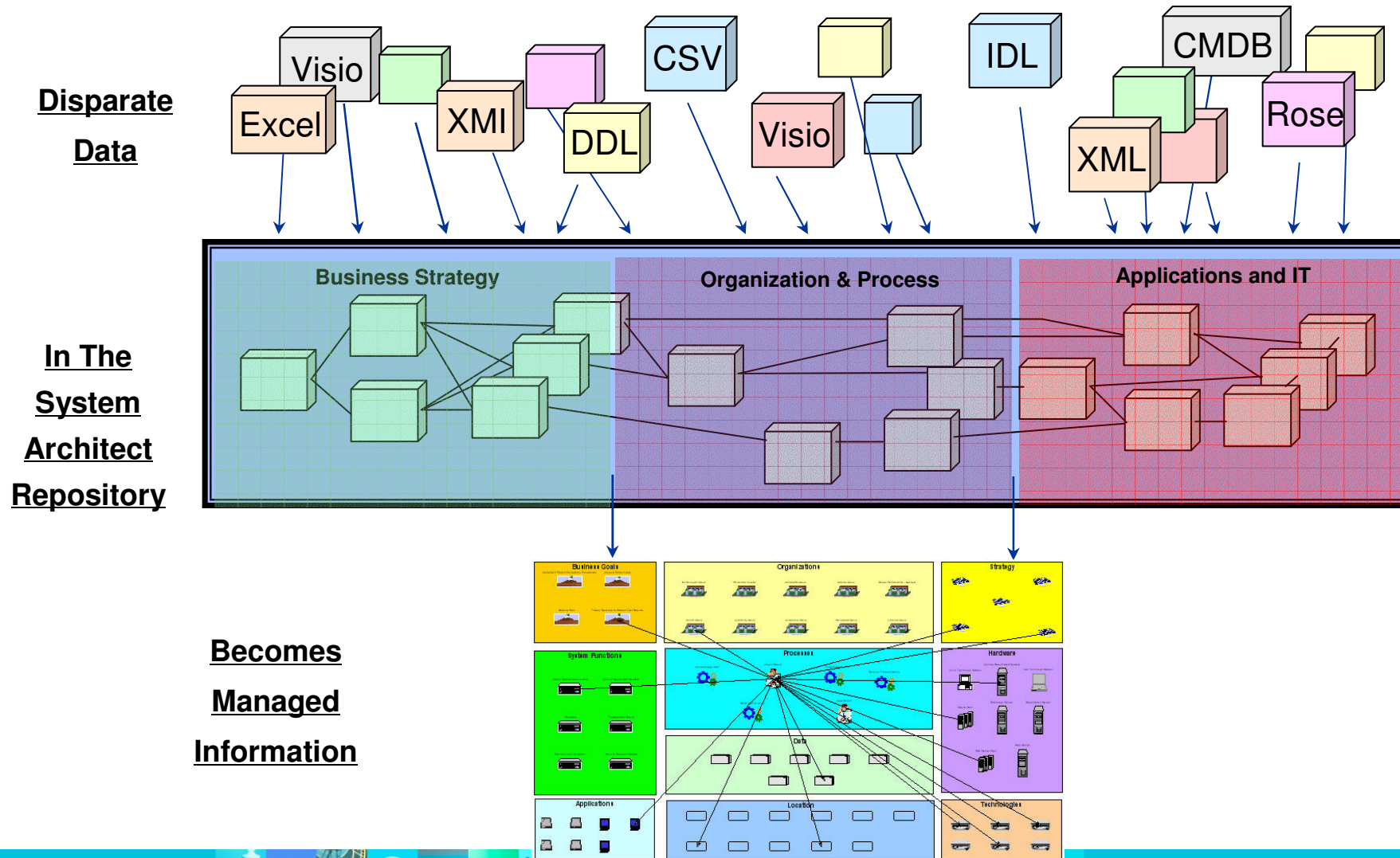
Capture and Model all Domains of the Organization





Create an Organizational Blueprint

Leverage Your Existing Information



The Telelogic Approach to Enterprise Architecture

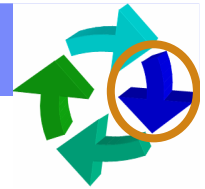
Create an Organizational Blueprint

*Understand the current structure of the organization,
it's business, it's information*



Analyze and Optimize

*Identify, Create, and Optimize
for continued improvement*



Build Relationships and Perform Gap Analysis

- **Create** dependencies
- **Visualize** gaps in the organization.
- **Update** the project directly from the Matrix.
- **Customize** and create your own view

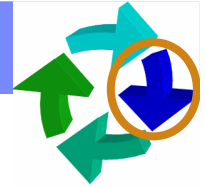
Application	Elementary Business Process	Answer Phone	Business Case Routed for Approval	Calculate Room Price	Check Payment Details	Check Reservation Details	Check Room Availability	Examine Period to Accom Date	Inform Customers Company	Make Cancellation Charge	Make Full Room Rate Charge	Make Percentage Room Rate Charge	NewProcess	Process Room Booking	Process_1	pt Reserve Room	Release Room	Reservations and Booking Funcs	Reserve Room	Store Customer Details	Take Payment Details	Test 1
Credit Card Booking																X						
Credit Card Booking	X		X		X		X													X	X	X
Customer Maintenance																				X		
Hotel Maintenance																						
Order Entry	X		X		X																	
Reservations			X		X	X											X		X	X	X	
VendorConnection			X																	X		
new application																						

Application Role	Accounts Clerk	Application Engineering	Assistant	Booking Coordinator
Application_1	ReadOnly		Create/Delete	Read/Write
BHIS System		Create/Delete	ReadOnly	Read/Write
Billing Application	Create/Delete	ReadOnly	ReadOnly	
Course Management		Create/Delete	ReadOnly	
Credit Card Booking	Read/Write		ReadOnly	Create/Delete
Customer Maintenance	Read/Write	ReadOnly		
DOORS		Create/Delete		Create/Delete
External Customer login		Read/Write		

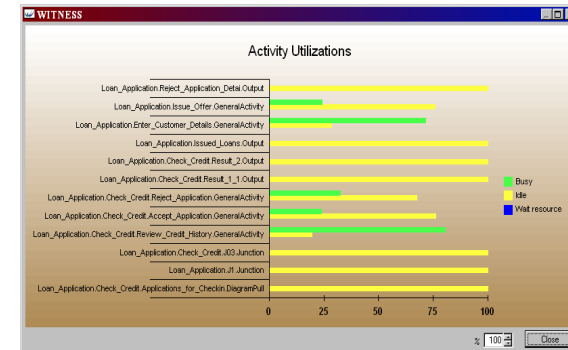
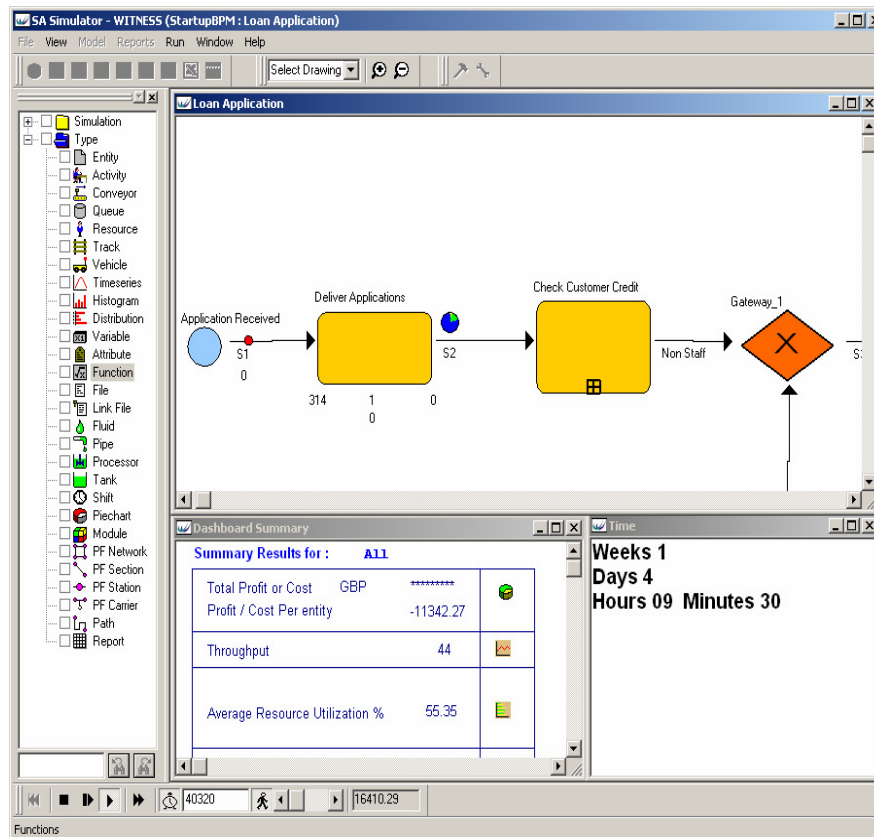


Perform Gap Analyses
What Processes are not Automated?

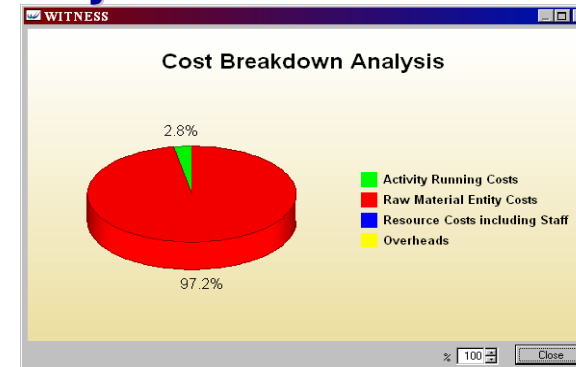




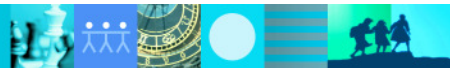
Simulate and Optimize Processes



Analyze resource utilization



Determine cost structures



The Telelogic Approach to Enterprise Architecture

Create an Organizational Blueprint

*Understand the current structure of the organization,
it's business, it's information*

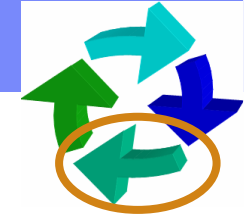
Analyze and Optimize

*Identify, Create, and Optimize
for continued improvement*

What Challenges Are We Facing

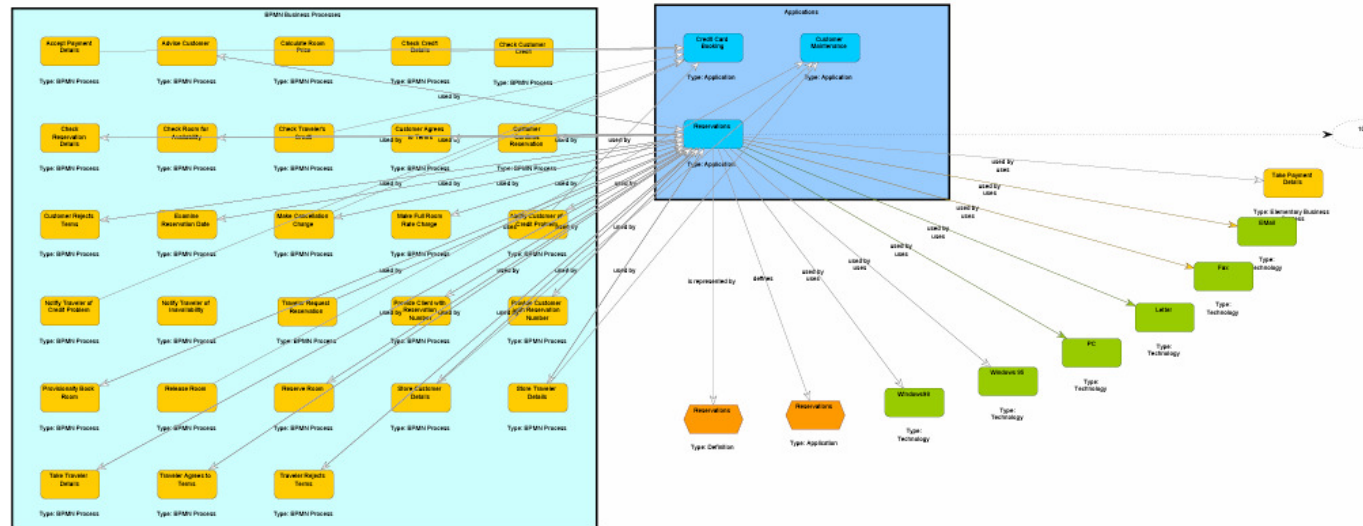
*Show Impact, Identify Risk, and Intelligently Walk the
Organization Through Change*





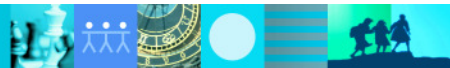
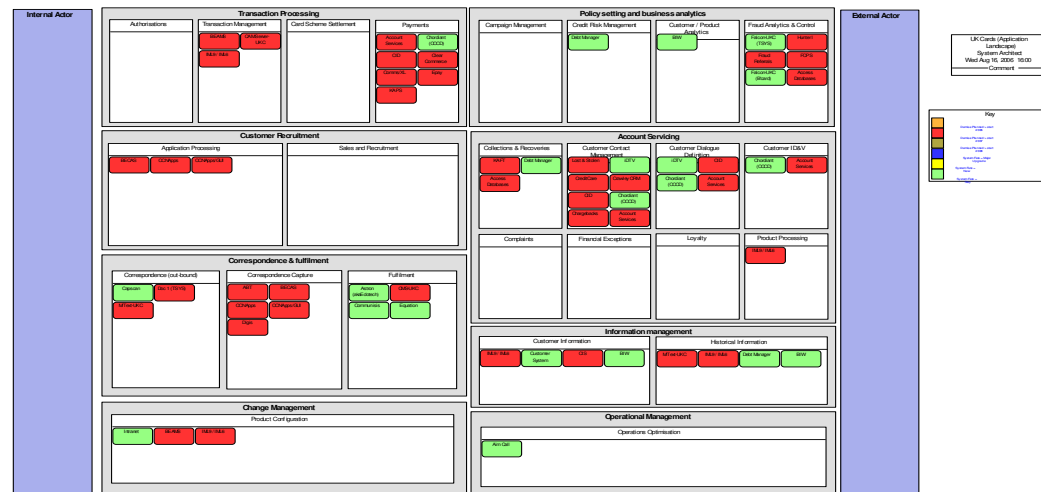
Impact Analysis and Reuse Reporting

Applications Supporting (BPMN) Business Processes



- Visualize and understand the impact of change

- Landscape Reports**
 Communicate project information



The Telelogic Approach to Enterprise Architecture

Create an Organizational Blueprint

*Understand the current structure of the organization,
it's business, it's information*

Share the Results

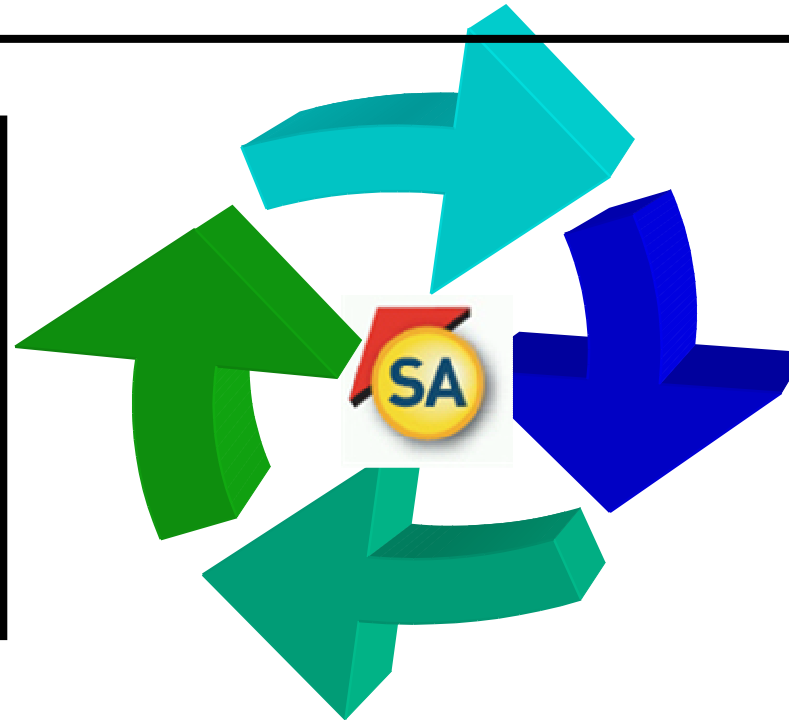
*A common resource for
empowering informed
decisions*

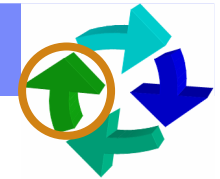
Analyze and Optimize

*Identify, Create, and Optimize
for continued improvement*

What Challenges Are We Facing

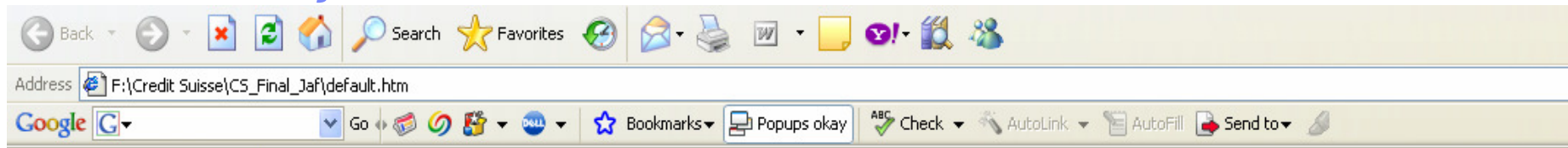
*Show Impact, Identify Risk, and Intelligently Walk the
Organization Through Change*





System Architect / Publisher

The Portal of your Information

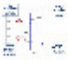











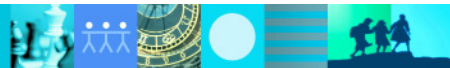
Search:

- Diagram
- Other
- Definition

Process Navigator

Process Map

Service Support	Generic Process Example	Service Delivery
 Capacity Management	 Generic Process	Incident Management 
 IT Service Level Management		Problem Management 
 Availability Management		Release Management 
 IT Service Continuity Management		IT Change Management 
		Configuration Management 



THANK
YOU

