



IBM Software

UK Innovate 2010

The Rational Software Conference

Smarter software for a smarter planet.



IBM Software

UK Innovate 2010

The Rational Software Conference

Doing things the automated way:
a straight forward approach to
application deployment

Dave Sayers, Technical Lead, Midvision

David Brauneis, STSM, RAFW Chief Architect, Rational Software

Smarter software for a smarter planet.



Case study overview

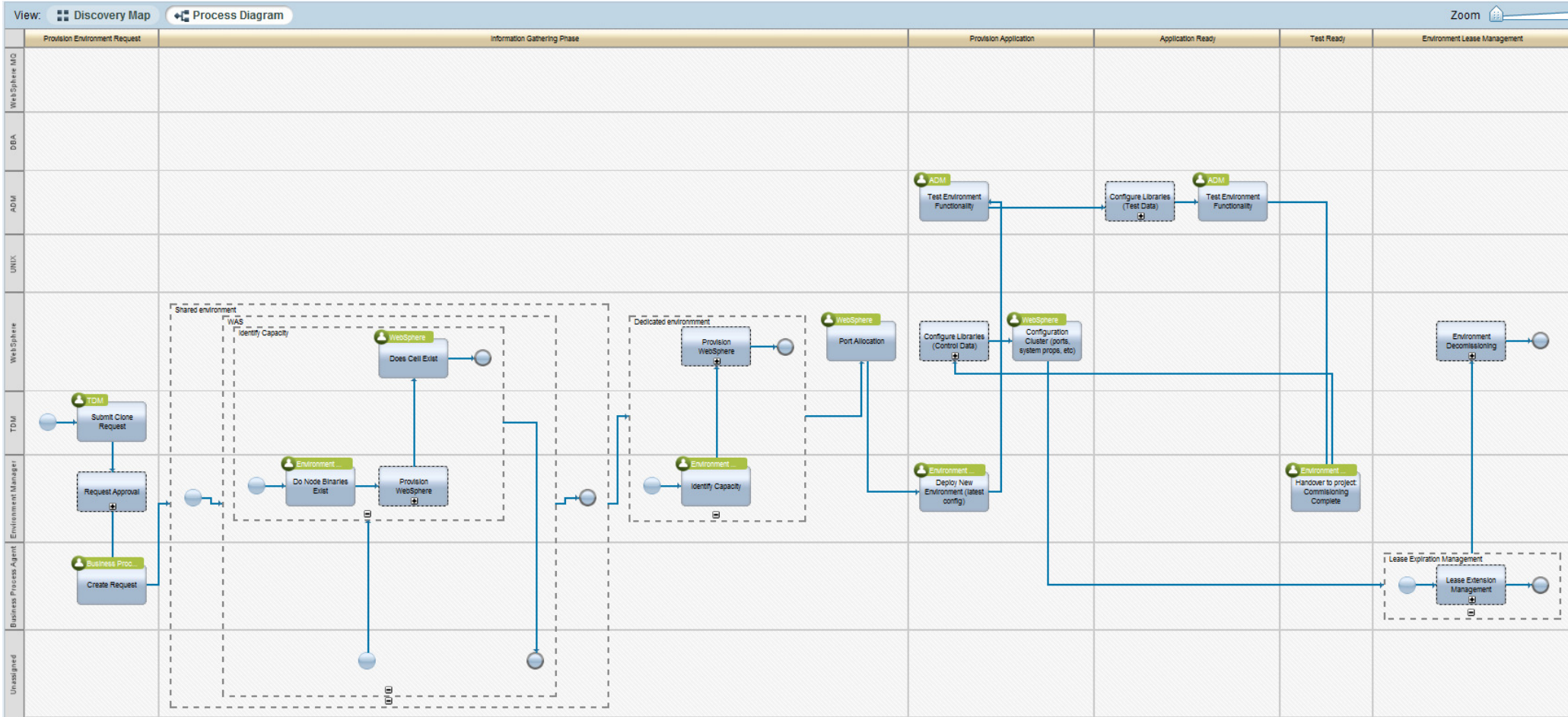
- Multi-billion pound integration programme of two large high street banks
- Massive upscale of ALL core services – Internet Banking, Branch network, Telephony, Payments, etc.
- Standardised on common middleware platform based on WebSphere family of products
- Overview of *how* through the use of automation and efficient process 2,400 environments were created in 8 weeks!



Process / Procedures

- Process Engineering is the foundation of effective *enterprise* middleware automation
- The two most important processes in the success of this case study are:
 - Environment Life Cycle Management
 - Configuration / Deployment processes





Environment Life Cycle Management Process

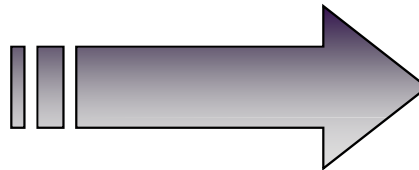


Key Principles

- Clearly defined entry and exit points for each stage
- Taxonomy: naming conventions, port allocation, file systems, etc.
- Port and Environment Identifiers
- Clearly defined roles and responsibilities
- High level of configuration and deployment automation
- Encapsulation of code and / or configuration into a “deployment package”



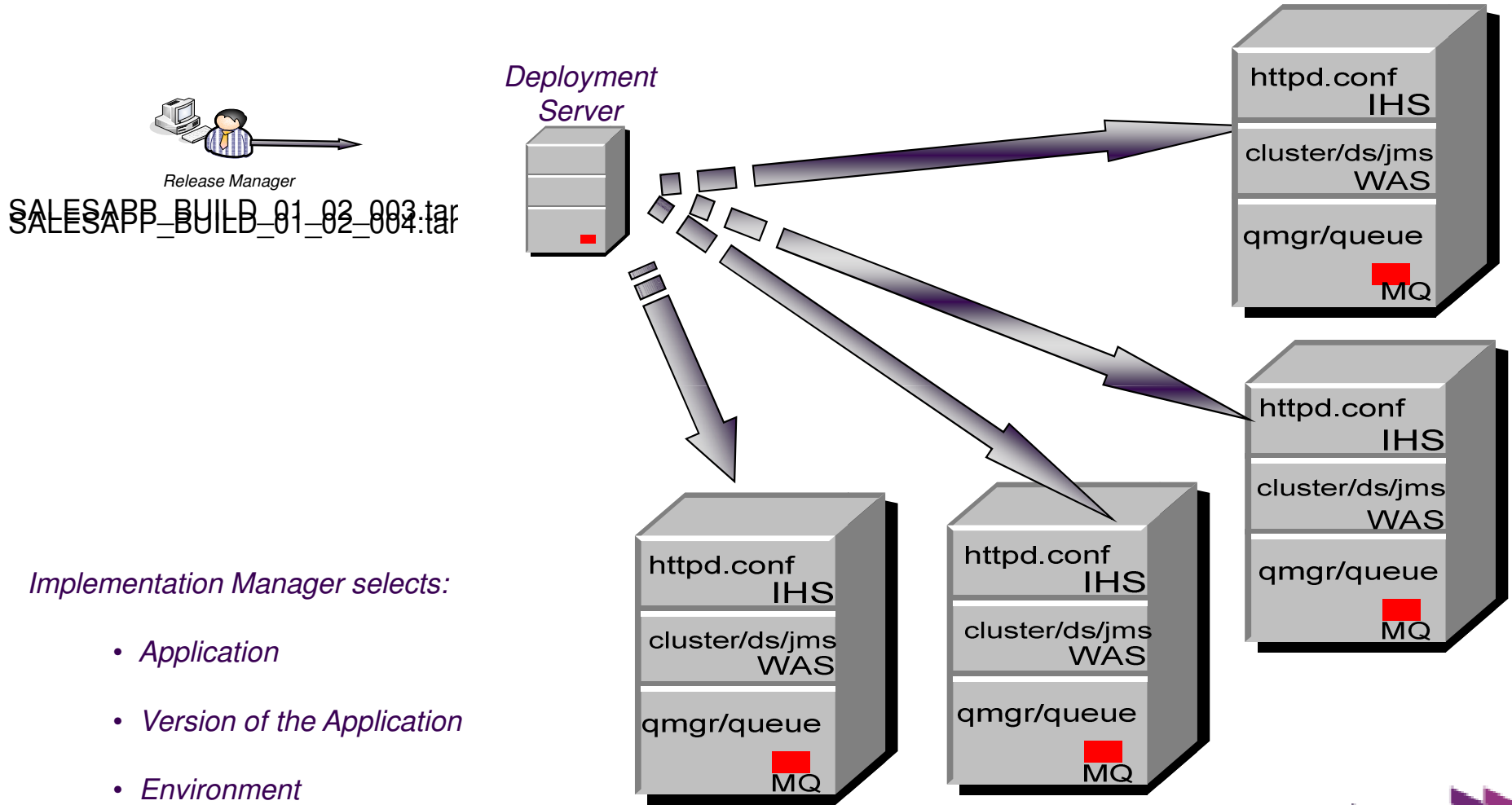
Creating the Deploy Package



SALESAPP_BUILD_01_02_003.tar

Baseline File: SALESAPP_BUILD_01_02_003





Implementation Manager selects:

- *Application*
- *Version of the Application*
- *Environment*



Principles

- Version control and build configuration
- Release versions of configuration change in the same way as code
- Allows linking of configuration releases and application releases – together comprising a business application
- “Build Once, Deploy Anywhere”
- Bringing established best practice from application development to infrastructure management



Properties / Template

DevTst01	
QMGR_NAME	SALESDEVQM01
QMGR_HOST	Inxdev01
QMGR_PORT	1414

MQSC Template
-----<QMGR_NAME>-----
-----<QMGR_HOST>-----
-----<QMGR_PORT>-----



Properties / Template

DevTst01	
QMGR_NAME	SALESDEVQM01
QMGR_HOST	Inxdev01
QMGR_PORT	1414
DB_USER	devtstuser

MQSC Template
-----<QMGR_NAME>-----
-----<QMGR_HOST>-----
-----<QMGR_PORT>-----
-----<DB_USER>-----



Properties / Template

DevTst01	
QMGR_NAME	SALESDEVQM01
QMGR_HOST	Inxdev01
QMGR_PORT	1414
DB_USER	devtstuser

SysTst01	
QMGR_NAME	SALESTSTQM02
QMGR_HOST	Inxtst01
QMGR_PORT	1415
DB_USER	syststuser

MQSC Template
-----<QMGR_NAME>-----
-----<QMGR_HOST>-----
-----<QMGR_PORT>-----
-----<DB_USER>-----



Version Control	Configuration Management Tool	Build Process	Release Mechanism	Middleware
Code Configuration	Eclipse or Web based config. UI	Generate Versioned Release Components	Ideally web based, self service	<ul style="list-style-type: none"> •WebSphere AS •Portal / WPS / ESB / WSSR •MQ / Broker / Datapower •DB2 / Oracle



Version Control	Configuration Management Tool	Build Process	Release Mechanism	Middleware
Code Configuration	Eclipse or Web based config. UI	Generate Versioned Release Components	Ideally web based, self service	<ul style="list-style-type: none"> •WebSphere AS •Portal / WPS / ESB / WSSR •MQ / Broker / Datapower •DB2 / Oracle
x.mqsc	← Alter channel			



Version Control	Configuration Management Tool	Build Process	Release Mechanism	Middleware
Code Configuration	Eclipse or Web based config. UI	Generate Versioned Release Components	Ideally web based, self service	<ul style="list-style-type: none"> •WebSphere AS •Portal / WPS / ESB / WSSR •MQ / Broker / Datapower •DB2 / Oracle
x.mqsc	← Alter channel	SALES_MQ_01_02_033.zip		



Version Control	Configuration Management Tool	Build Process	Release Mechanism	Middleware
Code Configuration	Eclipse or Web based config. UI	Generate Versioned Release Components	Ideally web based, self service	<ul style="list-style-type: none"> •WebSphere AS •Portal / WPS / ESB / WSSR •MQ / Broker / Datapower •DB2 / Oracle
x.mqsc	← Alter channel	SALES_MQ_01_02_033.zip	SALES_MQ_01_02_033	→ WMQ



Version Control	Configuration Management Tool	Build Process	Release Mechanism	Middleware
Code Configuration	Eclipse or Web based config. UI	Generate Versioned Release Components	Ideally web based, self service	<ul style="list-style-type: none"> •WebSphere AS •Portal / WPS / ESB / WSSR •MQ / Broker / Datapower •DB2 / Oracle
x.mqsc	← Alter channel	SALES_MQ_01_02_033.zip	SALES_MQ_01_02_033	→ WMQ
x.py	← JMS Queue Dest			



Version Control	Configuration Management Tool	Build Process	Release Mechanism	Middleware
Code Configuration	Eclipse or Web based config. UI	Generate Versioned Release Components	Ideally web based, self service	<ul style="list-style-type: none"> •WebSphere AS •Portal / WPS / ESB / WSSR •MQ / Broker / Datapower •DB2 / Oracle
x.mqsc	← Alter channel	SALES_MQ_01_02_033.zip	SALES_MQ_01_02_033	→ WMQ
x.py	← JMS Queue Dest	SALES_WAS_01_02_046.zip		



Version Control	Configuration Management Tool	Build Process	Release Mechanism	Middleware
Code Configuration	Eclipse or Web based config. UI	Generate Versioned Release Components	Ideally web based, self service	<ul style="list-style-type: none"> •WebSphere AS •Portal / WPS / ESB / WSSR •MQ / Broker / Datapower •DB2 / Oracle
x.mqsc	← Alter channel	SALES_MQ_01_02_033.zip	SALES_MQ_01_02_033	→ WMQ
x.py	← JMS Queue Dest	SALES_WAS_01_02_046.zip	SALES_WAS_01_02_046	→ WAS



Version Control	Configuration Management Tool	Build Process	Release Mechanism	Middleware
Code Configuration	Eclipse or Web based config. UI	Generate Versioned Release Components	Ideally web based, self service	<ul style="list-style-type: none"> •WebSphere AS •Portal / WPS / ESB / WSSR •MQ / Broker / Datapower •DB2 / Oracle
x.mqsc	← Alter channel	SALES_MQ_01_02_033.zip	SALES_MQ_01_02_033	→ WMQ
x.py	← JMS Queue Dest	SALES_WAS_01_02_046.zip	SALES_WAS_01_02_046	→ WAS
x.ddl	← Column, View, etc			



Version Control	Configuration Management Tool	Build Process	Release Mechanism	Middleware
Code Configuration	Eclipse or Web based config. UI	Generate Versioned Release Components	Ideally web based, self service	<ul style="list-style-type: none"> •WebSphere AS •Portal / WPS / ESB / WSSR •MQ / Broker / Datapower •DB2 / Oracle
x.mqsc	← Alter channel	SALES_MQ_01_02_033.zip	SALES_MQ_01_02_033	→ WMQ
x.py	← JMS Queue Dest	SALES_WAS_01_02_046.zip	SALES_WAS_01_02_046	→ WAS
x.ddl	← Column, View, etc	SALES_DB_01_02_012.zip		



Version Control	Configuration Management Tool	Build Process	Release Mechanism	Middleware
Code Configuration	Eclipse or Web based config. UI	Generate Versioned Release Components	Ideally web based, self service	<ul style="list-style-type: none"> •WebSphere AS •Portal / WPS / ESB / WSSR •MQ / Broker / Datapower •DB2 / Oracle
x.mqsc	← Alter channel	SALES_MQ_01_02_033.zip	SALES_MQ_01_02_033	→ WMQ
x.py	← JMS Queue Dest	SALES_WAS_01_02_046.zip	SALES_WAS_01_02_046	→ WAS
x.ddl	← Column, View, etc	SALES_DB_01_02_012.zip	SALES_DB_01_02_012	→ Oracle



Provisioning New Environments

Products > Configuration > Code

AppServer - products

IBM HTTP Server

WebSphere AS 6.1.0.29

WMQ6 ML72

AIX 6 TL10

Database - products

Oracle 11.1.0.7.0

AIX 6 TL10



Provisioning New Environments

Products > Configuration > Code

AppServer - products	Configuration / App
IBM HTTP Server	WEB_CONFIG_SALES_1_2_056
WebSphere AS 6.1.0.29	WAS_CONFIG_SALES_1_2_087
WMQ6 ML72	WMQ_CONFIG_SALES_1_2_032
AIX 6 TL10	STANDARD ORG IMAGE

Database - products	Configuration / App
Oracle 11.1.0.7.0	ORA_CONFIG_SALES_1_2_042
AIX 6 TL10	STANDARD ORG IMAGE

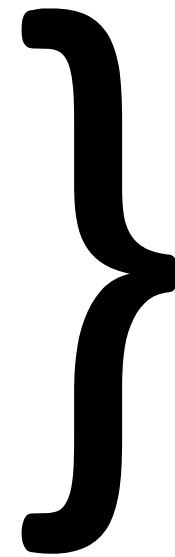


Provisioning New Environments

Products > Configuration > Code

AppServer - products	Configuration / App
	APP_CONTENT_SALES_1_2_124
IBM HTTP Server	WEB_CONFIG_SALES_1_2_056
WebSphere AS 6.1.0.29	WAS_CONFIG_SALES_1_2_087
WMQ6 ML72	WMQ_CONFIG_SALES_1_2_032
AIX 6 TL10	STANDARD ORG IMAGE

Database - products	Configuration / App
Oracle 11.1.0.7.0	ORA_CONFIG_SALES_1_2_042
AIX 6 TL10	STANDARD ORG IMAGE



Sales
Release 1.2



Montpellier Internet Banking Lab

- From OS Ready to a fully working Online Banking environment in one week
- This multi-tier environment consisted of:
 - WebSphere Application Server
 - Process Server
 - Portal Server / WCM
 - WebSphere MQ
 - WebSphere DataPower
 - IHS / Caching Edge Proxy
 - Oracle



Some more statistics...

- Deployment of 38 cells with 152 individual binary installations together with post installation configurations in just one week
- 450 Users performing over 2000 self service application builds and 4000 deploys per month
- 40 applications cloned to new infrastructure in one week
- SLA's for new environments down to one week. This is for a fully working, multi component business application!



Cost savings / efficiencies

- Not about having less people
- Doing more with the ones you have
- Increasing utilisation
- Removing delays caused by infrastructure teams on project life cycle
- Efficiencies through “Self Service”



Compliance

- Audit and visibility of who made changes, and when.
 - Install and Patch
 - Configuration changes
 - Application deployments
 - Configuration Drift
- SOX compliance / Workflow



On demand and cost recovery

- If you allow projects to have environments at will, make sure they are using them!
- Cost recovery focuses the mind. Plus – if your recovery is correct, you can use it to fund the infrastructure.
- Cloud concepts for business applications
- Decommissioning is as important as commissioning!



WMQ Support Overview

- Support for v5, v6, v7 Queue Managers
- Supports many different Operating Systems due to Client-Server model: Unix / Windows / z/OS / AS/400 / Tandem
- Queue Manager Creation (Windows / UNIX)
- Client-based deployment of WMQ artefacts to heterogeneous remote Queue Managers
- Token Scope and indexing
- Dynamic Authorisation Scripts
- Preview Mode



WMB Support Overview

- Compatible with deployments to WMB v6, v7
- Supported platforms (Unix / Windows / z/OS)
- Automated BAR File Deployments
- Ability to override BAR files
- Module either appends or re-creates Execution Groups
- Broker Creation
- Deployment of Jplugins
- XSD Schemas



What is RAFW?

Customizable and extensible framework that delivers...

- + Configuration management automation
- + Application deployment automation
- + Product installation & patching automation

Core Strengths...



Accuracy

“Data Abstraction” - Maintains normalized configuration data

Reliability

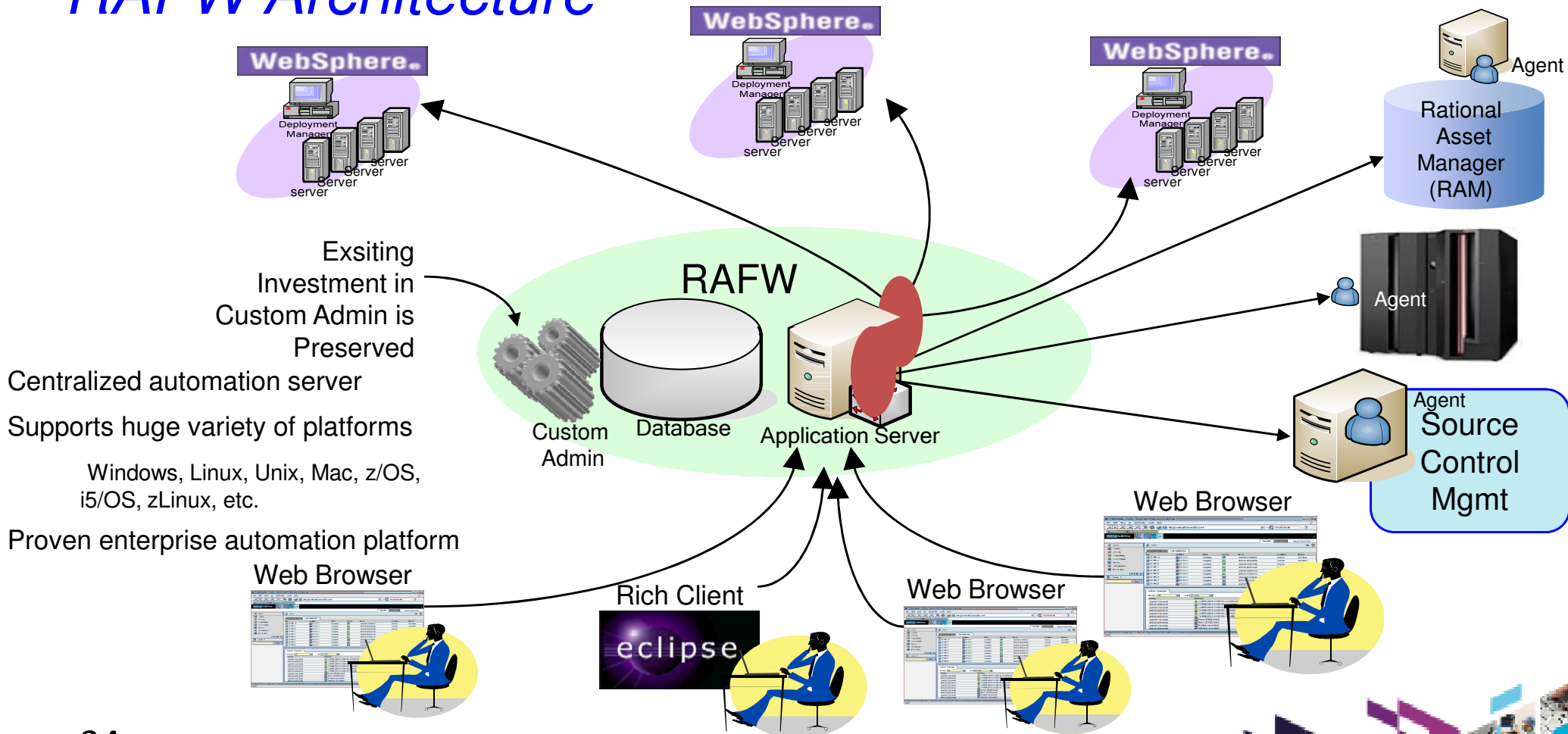
Apply right data to the right target environment

Consistency

Apply data in repeatable manner to target environments



RAFW Architecture



Existing Investment in Custom Admin is Preserved

Centralized automation server
Supports huge variety of platforms
Windows, Linux, Unix, Mac, z/OS, i5/OS, zLinux, etc.

Proven enterprise automation platform



RAFW Extension Concept

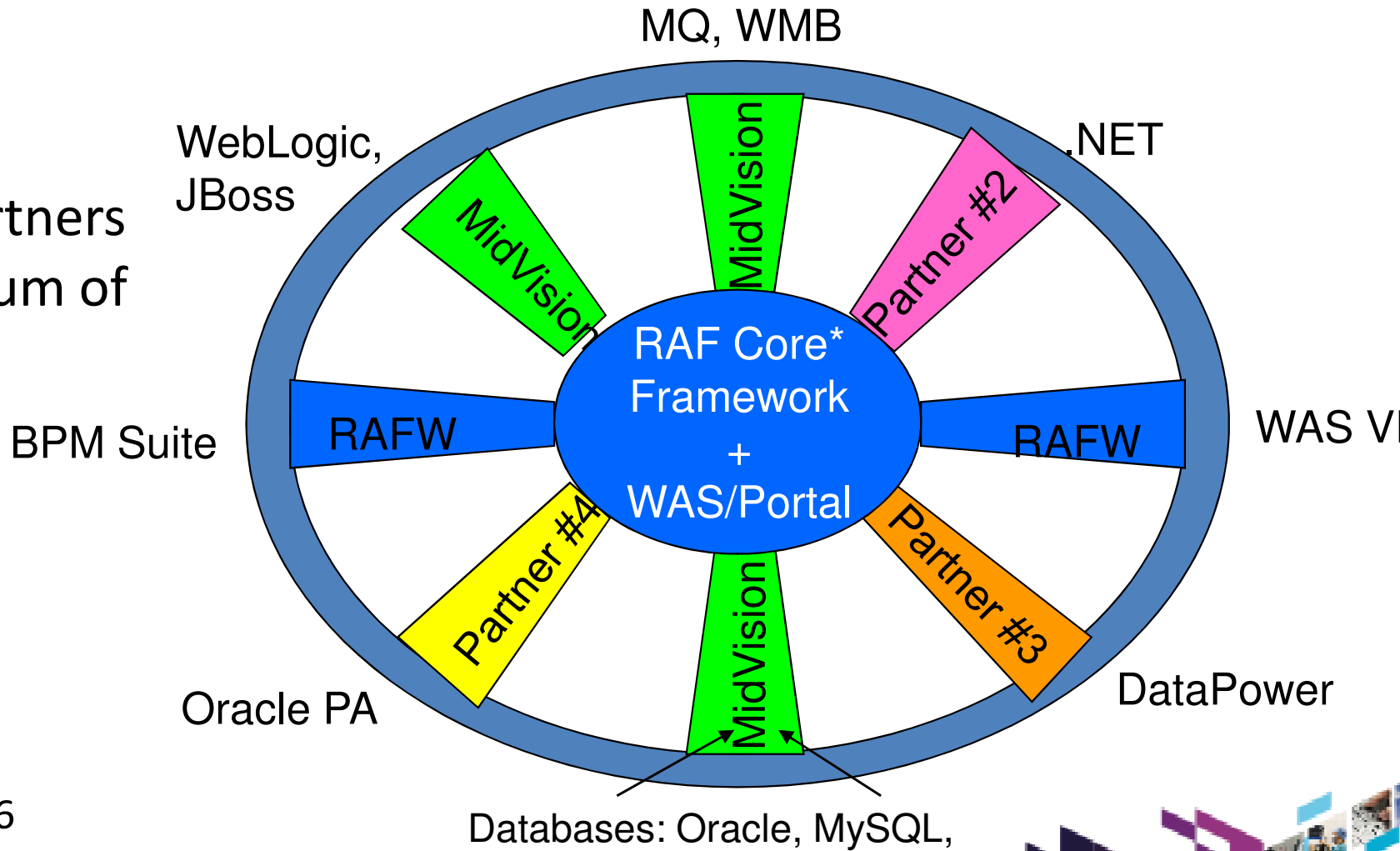
- Rational Jazz.net
 - Open, participatory development initiative by Rational
 - GA and pre-GA drivers available for evaluation and non-commercial use
 - In addition to downloading the drivers, users can also...
 - Get a peak into milestone plans, post feature requests, work items and feedback
 - Post issues or defects, access documentation and responses from Rational Product Engineering teams, and broader user community

- BF / RAFW on Jazz.net: <https://jazz.net/downloads/rational-build-forge/>
 - BF and RAFW 7.1.1.4 GA drivers and incubators
 - WebSphere BPM Suite: WebSphere Process Server, WSRR, WebSphere ESB
 - WebSphere Virtual Enterprise
 - Pre-GA drivers of upcoming releases of BF/RAFW 7.1.2 release
 - Pre-GA drivers of upcoming releases of 2011 BF/RAFW release

- 100% Customer driven scenarios
 - “Not dreamed up in the lab” – field-tested first
 - BPs or IBM Services implement extensions as services engagements
 - Rational validates market opportunity and “productizes” services assets after incubation period
 - Market opportunity validated for BPM Suite, WebSphere VE & WAS Feature Packs



Leveraging Partners for Full Spectrum of Middleware



RAFW 2H10 Release Highlights



- Expanded automation targets
 - WebSphere BPM Suite
 - WebSphere Process Server 6.2
 - WebSphere Enterprise Service Bus 6.2
 - WebSphere Service Registry and Repository 6.2
 - WebSphere Service Registry and Repository 6.3
 - WebSphere Virtual Enterprise 6.1
 - WAS Feature Packs
 - WAS 6.0: Web 2.0
 - WAS 6.1: Web 2.0, EJB3, Web Services
 - WAS 7.0: Web 2.0, CEA, XML, SCA, OSGi & JPA
 - WebSphere Portal 6.1.5
 - Fixpack updates for WAS, IHS and WebSphere Portal
- Performance/Scalability Improvements
 - Core Automation Framework (Purge, Scheduler, etc...)
 - RAFW Initial & Media Agentless Transfer



RAFW 2H10 Release Highlights

- Consumability Improvements
 - Installer GUI for RAFW (in Build Forge)
 - A new uninstaller utility for incubator installations
- Extensibility Enhancements
 - Easily extend the product with custom actions that incorporate reusable Java code
 - Easily extend the product with custom actions that incorporate reusable Jython code
 - Enhanced support for Custom Environment Templates



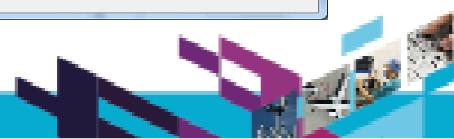
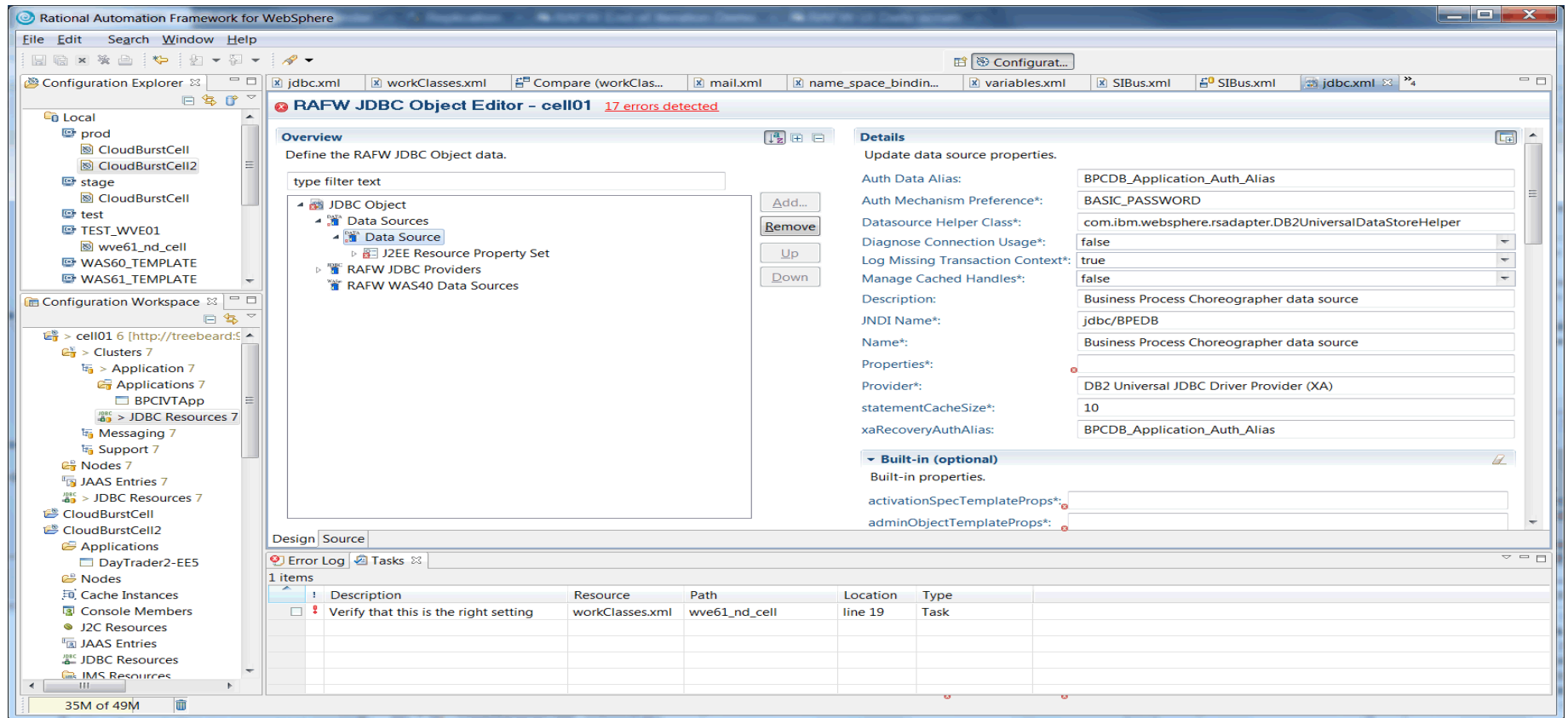
RAFW: 2011 and Beyond



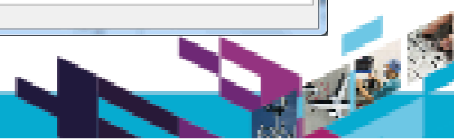
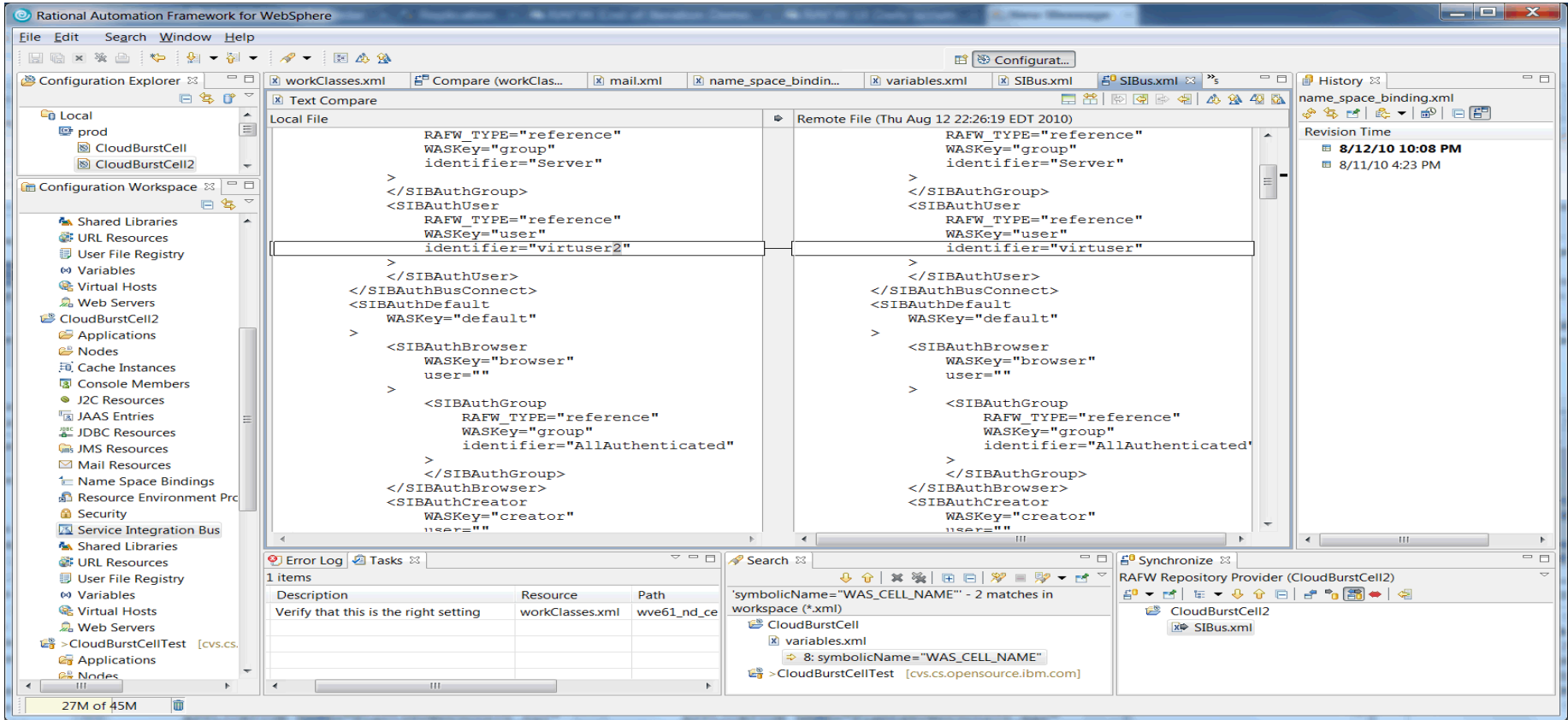
- Expansion of automation portfolio
 - Exclusively driven by market needs and customer feedback
 - IBM and non-IBM targets, including MQ and WMB
- Eclipse-based GUI for intuitive visualization of critical usage scenarios
 - Exploitation of Eclipse and VCE (*Screen shots on following pages*)
- Continued enhancements in scalability, performance and user experience
- End to end Lifecycle Management solutions through integration with key IBM Rational and Tivoli products
 - Tivoli Service Automation Manager/Tivoli Provisioning Manager
 - Rational Software Architect – Deployment Planning & Modeling



Screen Shot of RAFW Configuration Editor (Pre-release)



Screen Shot of RAFW Configuration Comparison (Pre-release)





IBM Software

UK Innovate 2010

The Rational Software Conference

Smarter software for a smarter planet.

