



# IBM WebSphere Host Integration Solution for IBM @server iSeries V4.1 – Includes WebSphere Host Access Transformation Services V5

## Overview

In one total software offering, the WebSphere® Host Integration Solution (HIS) for iSeries™ can enable virtually every user to access your mission-critical business systems independent of the platform, network, connectivity, or host system environment.

HIS for iSeries consists of:

- IBM Communications Servers
- WebSphere Application Server — Express
- WebSphere Host On-Demand
- IBM Personal Communications
- WebSphere Studio Site Developer and WebSphere Development Studio Client for iSeries (included in WebSphere Application Server — Express)
- WebSphere Host Access Transformation Services

HIS for iSeries features:

- One fixed price per registered or concurrent user
- Fixed price independent of the total number of clients and servers
- Ability to mix and match quantities of server and client components for available platform environments
- Latest level of component products

HIS for iSeries is ideal if you have or need:

- Large number of users
- Multiprotocol environments
- Access from virtually any client machine to business applications on any host or server over any network protocol
- Internet access to mission-critical applications and data on host systems

HIS for iSeries — your complete answer to host access and network integration, available from one company.

### **Planned availability dates**

December 19, 2003 (electronic software delivery)

January 30, 2004 (media and documentation)

## At a glance

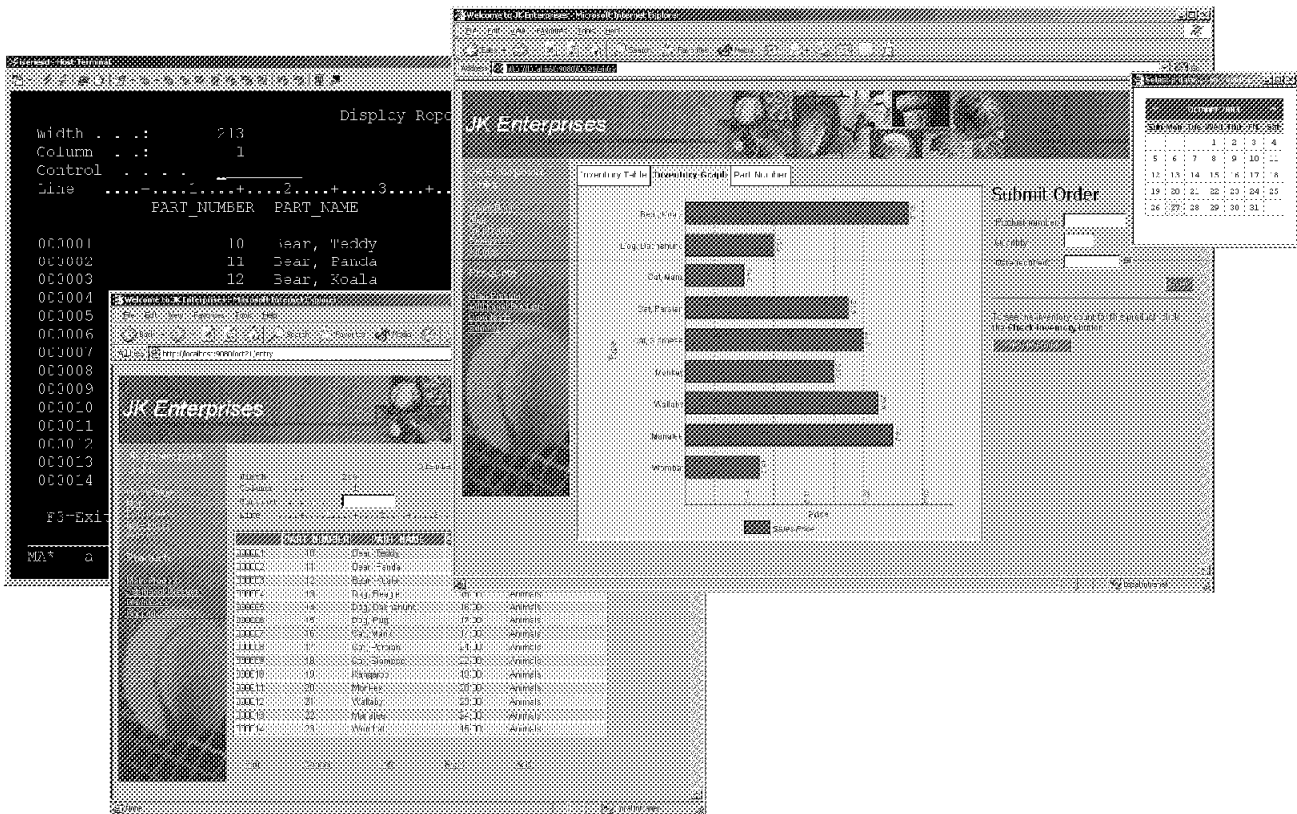
### **WebSphere Host Access Transformation Services (HATS) V5**

- Integrates multiple host applications into a single Web interface
- Enhances WebSphere Portal integration and support
- Allows for automated migration from Host Publisher V4 projects
- Provides programmed access to host transactions through standard Web services interfaces
- Adds support for customization of default rules

WebSphere Host Publisher V4 is no longer included with the HIS.

*This announcement is provided for your information only. For additional information, contact your IBM representative, call 800-IBM-4YOU, or visit the IBM home page at: <http://www.ibm.com>.*

## Description



This Web-to-host offering addresses the full e-business cycle with industry-leading host access solutions and unmatched flexibility for the 5250 environment.

Integrated into the WebSphere solution platform (a comprehensive set of integrated e-business solutions), the HIS for iSeries gives you a single point of contact, service, and support to help meet your network needs.

### *HIS V4.1 for iSeries programs*

#### **IBM Personal Communications V5.7 for Windows™**

Personal Communications is a key communications client component of the WebSphere Host Integration Solution for LAN, WAN, and remote access and connectivity, providing a security-rich technology bridge to the future.

Personal Communications for Windows V5.7:

- Runs on Microsoft™ Windows 95 Release 2, Microsoft Windows 98 or Windows 98 SE, Microsoft Windows Millennium Edition (Windows ME), Microsoft Windows NT™ 4.0, Microsoft Windows 2000 (Professional, Server, and Advanced Server,) and Microsoft Windows XP (Professional and Home)
- Is included in the WebSphere Host Integration Solution for iSeries (registered users' offering only)

#### **WebSphere Host On-Demand V8**

Get security-rich Web-to-host access and e-business application programming support with WebSphere Host On-Demand. Access TN5250 sessions from a Java™-enabled browser. Standard desktop utilities, file transfer, host print, and a GUI can help maximize your productivity. WebSphere Host On-Demand requires no client installation or middle-tier server, and it supports your choice of client and server platforms.

WebSphere Host On-Demand can now be run as a portlet within the WebSphere Portal family. Administrators can use the development wizard to create custom WebSphere Host On-Demand portlets with only the functions needed for specific users and groups. Preconfigured sample portlets are available for download from:

- WebSphere Host On-Demand service key site:

<http://www6.software.ibm.com/aim/home.html>

Look on the Host On-Demand CSD page under Tools and Utilities

- Portal portlet catalog:

<http://www-3.ibm.com/software/webservers/portals/portlet/catalog>

#### **WebSphere Studio Site Developer (WSSD) and WebSphere Development Studio Client for iSeries (WDSi)**

The WebSphere Host Integration Solution for iSeries includes WSSD and WDSi with the WebSphere Application Server — Express. Web developers get what they need to create, manage, and maintain dynamic Web applications that meet open technology standards.

WSSD runs on Windows NT, Windows 2000, and Windows XP.

#### **WebSphere Application Server — Express (Application Server — Express) V5.0.2**

Application Server — Express is a tightly integrated development tool and application server that provides an easily approachable on-ramp to e-business for companies creating dynamic Web sites.

Application Server — Express runs on Windows NT, Windows 2000, Windows XP, Linux Intel™ — Red Hat, Linux Intel — Red Hat Advanced Server, Linux Intel — SuSE.

**IBM Communications Server**

This security-rich, scalable, and reliable multifunction and multiprotocol gateway enables PCs to communicate with the iSeries.

You are free to choose applications based on business needs and not the network infrastructure.

The following are included in the HIS for iSeries:

- Communications Server for AIX®, V6.1
- Communications Server for Windows V6.1.1

**WebSphere HATS V5**

HATS is a dynamic load-and-go solution for rejuvenating green-screen applications and delivery via HTML. Your legacy applications are given a Web-like GUI through the use of a rules-based transformation engine.

Minor changes to the shipping versions and releases may occur as newer levels of the components are made available. Refer to the Host Integration Web site for updates to the shipping versions and releases.

<http://www.ibm.com/software/webervers/hostintegration>

HATS V5-generated applications are supported on AIX, Linux, Linux for IBM @server zSeries®, OS/390®, OS/400®, Sun Solaris, Windows 2000, Windows 2003, Windows NT, and z/OS®.

**Consulting Services**

The HIS for iSeries offering includes services from the Host Integration Services Group to assist you with basic product installation and use. Services must be requested within 90 days of purchase of the HIS for iSeries and completed within 150 days of purchase.

A range of installation, configuration, and skills transfer offerings help you to realize a more successful implementation of the HIS for iSeries. Services entitlements are based on points associated with your HIS for iSeries sales transaction. Entitlements range from two days to five days:

Number of points	Entitlement
1,000 — 2,499	Not applicable
2,500 — 4,999	Two days (16 hours) of remote assistance/consulting or one day on site
5,000 — 9,999	Three days (24 hours) of remote assistance/consulting or two consecutive business days on site
10,000 and above	Five days (40 hours) of remote assistance/consulting or 3.5 consecutive business days (28 hours) on site

An IBM consultant will work with you to determine the most effective use of your services entitlement. If the requested scope of work is greater than the allotted hours, or if it requires customization beyond basic solution implementation, IBM services can work with you to create a customized billable service engagement with credit given for the entitled hours. To request implementation services assistance from the Host Integration Services Group, contact your IBM software sales representative or send an e-mail to AIMHIT@us.ibm.com.

For more information, visit:

<http://www.ibm.com/software/webervers/hostintegration/services.html>

**License information**

- The deliverables associated with the order for the HIS are PoEs only.
- The media should be acquired by ordering the media packs for the HIS available for ordering under the Passport Advantage® offering.
- Each licensed user acquired for a charge can access a combination of servers and clients within and between any of the products included in the HIS and across platforms.
- The number of Communications Servers installed cannot exceed 10% of the total number of clients installed.
- The license to the program entitles you to install and use one copy of any version of WAS on a machine with a single processor provided that you acquire 50 registered or concurrent user authorizations. You may use one additional copy of any version of WAS on one additional processor for each additional 100 registered or concurrent user authorizations that you acquire.
- The license to the program entitles you to install and use one license of the WSSD component when you acquire 50 registered or concurrent user authorizations. Thereafter, you are entitled to install and use one additional WSSD component for each additional 100 registered or concurrent user authorizations you acquire, up to a total of five licenses of the WSSD component.

---

**Product positioning**

---

To survive in today’s fast-moving marketplace, you must find ways to quickly, securely, and cost-effectively extend the reach of your critical business systems to remote employees, business partners, and customers.

The ability to support and effectively use the Web is paramount for competitive delivery of your company’s goods, services, and information. Because the bulk of the world’s business applications and data resides on host systems from IBM, integrating these systems with Web technology is vital. You must deliver connectivity and access to a variety of clients, networking technologies (TCP/IP, SNA, and SPX/IPX), operating systems, and network types (intranets, extranets, Internet, and wireless). This solution is a total software offering that allows you to build this kind of networking infrastructure.

This solution is for companies that need or have:

- Internet access to business applications and data on host systems
- Existing SNA applications they want to extend over TCP/IP networks
- Scalable infrastructure to accommodate growth and new technology within their business
- The ability to do all the above with help leveraging existing networking investments

### ***National language support***

HIS for iSeries consists of multiple components with specific language translations available, including bi-directional (BIDI) support. Refer to the individual components for details pertaining to the language translations available.

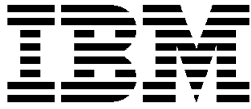
### ***Positioning summary***

	Registered	Concurrent
License Option	A registered user is defined as a person who accesses and uses the program (1). A registered user is considered a distinct user. A registered user authorization is required for each distinct person that will access and use the program.	A concurrent user is defined as any person who accesses and uses the program or a concurrent session or connection to an existing application from the program (1).
Offering content	PCOMM, HOD, HATS, Communications Server for AIX, Communications Server for Windows, Application Server — Express including WSSD and WSc.	HOD, HATS, Communications Server for AIX, Communications Server for Windows, Application Server — Express including WSSD and WSc
Networks Application focus	SNA/IP/Internet Executing internal business processes (internal information needs)	Internet Providing information for business partners and customers (internal and external needs)
Product migration	Traditional emulators to/from Web-to-host PCOMM, Host On-Demand, Host Publisher, HATS	Only within Web-to-host
Security	Secured Sockets Layer (SSL), RACF	SSL, RACF(R)
Usage	SNA/IP/Internet — connection to host systems for multiple hours every day	Internet — connection to host systems for short periods at a time

(1) The HIS for iSeries is a collection of programs. The collection, or any one or more of the products, is referred to as the program.

### ***Trademarks***

iSeries is a trademark of International Business Machines Corporation in the United States or other countries or both. The e-business logo, WebSphere, AIX, OS/390, OS/400, zSeries, z/OS, Passport Advantage, and RACF are registered trademarks of International Business Machines Corporation in the United States or other countries or both. Intel is a trademark of Intel Corporation. Windows, Microsoft, and Windows NT are trademarks of Microsoft Corporation. Java is a trademark of Sun Microsystems, Inc. Other company, product, and service names may be trademarks or service marks of others.



# IBM US Announcement Supplemental Information

December 16, 2003

## Offering Information

Product information will be available through the Offering Information Web site at:

<http://www.ibm.com/common/ssi>

Also, visit the Passport Advantage® Web site:

<http://www.ibm.com/software/passportadvantage>

## Publications

No publications are shipped with these products. Publications are shipped on the product CD and can be printed.

## Technical information

**Hardware requirements:** Refer to the individual components.

**Software requirements:** Refer to the individual components.

**Limitations:** Refer to the individual components.

### Planning information

**Installability:** Software Maintenance, previously referred to as Subscription and Technical Support, is now included in the Passport Advantage Agreement. Installation and technical support for the products announced in this letter is provided by the Software Maintenance offering of the IBM International Passport Advantage Agreement. This fee service enhances customer productivity by providing voice and/or electronic access into the IBM support organizations.

**Packaging:** The deliverables associated with this offering are Proofs of Entitlement (POE) only. Media packages may be ordered.

### Security, auditability, and control

The customer is responsible for evaluation, selection, and implementation of security features, administrative procedures, and appropriate controls in application systems and communication facilities.

## Ordering information

Licensed function title	Product group	Product Category
Host Integration Solution Internet	App Integration Middleware Other	WebSphere®
Host Integration Solution Intranet	App Integration Middleware Other	WebSphere

The HIS for iSeries™ is a software offering with one charge unit for users, either registered (intranet) or concurrent (Internet).

### Passport Advantage supply

Program name/description	Part number
<b>HIS Internet for iSeries V4.1</b> Media Pack Multilingual (French, Korean, Chinese — Simplified, Spanish, Norwegian Bokmal, Brazilian Portuguese, German, Swedish, Japanese, Chinese — Traditional, English U.S., Norwegian Nynorsk, Turkish, Dutch, Czech, Slovakian, Italian, Finnish, Polish) Apple Macintosh Operating System, Windows™ 2000, Windows 95, AIX® V4.x, Windows XP, Solaris (Sun Microsystems), Windows Server 2003, OS/400® V5.x, Windows 98, Windows NT™, Novell NetWare, AIX V5.x, Windows Me, HP-UX 11.x CD-ROM Digital Disk — ISO 9660 Standard V4.1	BM02FML
<b>HIS Intranet (Registered) V4.1</b> Media Pack Multilingual (French, Korean, Chinese — Simplified, Spanish, Norwegian Bokmal, Brazilian Portuguese, German, Swedish, Japanese, Chinese — Traditional, English U.S., Norwegian Nynorsk, Turkish, Dutch, Czech, Slovakian, Italian, Finnish, Polish) Apple Macintosh Operating System, Windows 2000, Windows 95, AIX V4.x, Windows XP, Solaris (Sun Microsystems), Windows Server 2003, OS/400 V5.x, Windows 98, Windows NT, Novell NetWare, AIX V5.x, Windows Me, HP-UX 11.x CD-ROM Digital Disk — ISO 9660 Standard V4.1	BM02JML

This announcement is provided for your information only. For additional information, contact your IBM representative, call 800-IBM-4YOU, or visit the IBM home page at: <http://www.ibm.com>.

**Passport Advantage customer: media pack entitlement details:** Customers with active maintenance or subscription for the products listed below are entitled to receive the corresponding media pack.

**Withdrawal of previous Passport Advantage part numbers:** IBM will withdraw from marketing the following parts licensed under the IBM international program license agreement on March 9, 2004.

Entitled maintenance offerings description	Media packs description	Part number
<b>HIS Internet for iSeries V4.1</b>		
HIS Internet for iSeries	HIS Internet for iSeries Multilingual (French, Korean, Chinese — Simplified, Spanish, Norwegian Bokmal, Brazilian Portuguese, German, Swedish, Japanese, Chinese — Traditional, English U.S., Norwegian Nynorsk, Turkish, Dutch, Czech, Slovakian, Italian, Finnish, Polish) Apple Macintosh Operating System, Windows 2000, Windows 95, AIX V4.x, Windows XP, Solaris (Sun Microsystems), Windows Server 2003, OS/400 V5.x, Windows 98, Windows NT, Novell NetWare, AIX V5.x, Windows Me, HP-UX 11.x CD-ROM Digital Disk — ISO 9660 Standard	BM02FML

**HIS Intranet (Registered) V4.1**

HIS Intranet for iSeries	HIS Intranet (Registered) Multilingual (French, Korean, Chinese — Simplified, Spanish, Norwegian Bokmal, Brazilian Portuguese, German, Swedish, Japanese, Chinese — Traditional, English U.S., Norwegian Nynorsk, Turkish, Dutch, Czech, Slovakian, Italian, Finnish, Polish) Apple Macintosh Operating System, Windows 2000, Windows 95, AIX V4.x, Windows XP, Solaris (Sun Microsystems), Windows Server 2003, OS/400 V5.x, Windows 98, Windows NT, Novell NetWare, AIX V5.x, Windows Me, HP-UX 11.x CD-ROM Digital Disk — ISO 9660 Standard	BM02JML
--------------------------	--	---------

Program name	Program number	Part description	Part number
HIS Internet (Concurrent) for iSeries V4.0	5724-F84	HIS Internet for iSeries	BM020IT BM020KO BM020PL BM020TC BM020JA BM020SC BM020FR BM020DE BM020ML
HIS Intranet (Registered) for iSeries V4.0	5724-F86	HIS Intranet (Registered)	BM024FR BM024DE BM024IT BM024ML BM024KO BM024TC BM024SC BM024PL BM024JA

Orders for these part numbers will not be accepted after March 9, 2004, nor will normal marketing activities or educational support be available unless previous agreement exists between the customer and IBM.

**Terms and conditions**

This product is available only via Passport Advantage. It is not available as shrinkwrap.

**Licensing:** IBM International Program License Agreement. PoE are required for all authorized use.

Part number products only, offered outside of Passport Advantage, where applicable, are license only and do not include Software Maintenance.

**License information form numbers**

Program name	Program number	Form number
HIS Internet (Concurrent) for iSeries	5724-F84	L-DDCA-5STTE7
HIS Intranet (Registered) for iSeries	5724-F86	L-DDCA-5STTE7

**Limited warranty applies:** Yes

**Money-back guarantee:** If for any reason you are dissatisfied with the program, return it within 30 days from the invoice date, to the party (either IBM or its reseller) from whom you acquired it, for a refund. This applies only to your first acquisition of the program.

**Copy and use on home/portable computer:** No

**Volume orders (IVO):** No

**Passport Advantage applies:** Yes and through the Passport Advantage Web site at:

<http://www.ibm.com/software/passportadvantage>

**Usage restriction:** Yes

The HIS for iSeries, defined as the program, may only be used for 5250 emulation. The program is available based on two charging methods: Registered users and concurrent users. Consult your PoE to determine which charging method applies to your license.

The **registered version** of the program consists of the following components:

- Personal Communications (Personal Communications)
- WebSphere Host On-Demand (HOD)
- Communications Server
- WebSphere HATS
- WSSD
- WebSphere Application Server — Express (Application Server — Express)
- WDS

The **concurrent version** of the program consists of the following components:

- WebSphere HOD
- Communications Server
- WebSphere HATS
- WSSD
- WDS
- WebSphere Application Server — Express (Application Server — Express)

Except as modified herein, the use of the components will be governed by the license terms that accompany the components.

**Program-unique terms**

The program is available based on two charging methods: Registered users and concurrent users. User access on connections made from the Internet and/or intranet must be based on the number of registered users. If determining the number of registered users is possible then the registered user method should be selected. If determining the number of registered users is not possible then the concurrent user method should be selected.

Connections (from either users or other applications) made to the program through other products that act as connection concentrators must be counted as program users and are subject to use-base charges based on the number of registered users or concurrent users.

**Registered users**

A registered user is defined as a person who accesses and uses the program. A registered user is considered a distinct user. A registered user authorization is required for each distinct person that will access and use the program. A registered user license to the program entitles a distinct registered user to access and use the components of the program subject to the limitations under Component Restrictions below.

**Concurrent user**

The program defines a concurrent user as any person who accesses and uses the program or a concurrent session or connection to an existing application from the program. Examples of sessions and connections would be the program connected to existing applications through TN5250 connections only. A concurrent user authorization is required for each user concurrently accessing and using the program. A concurrent user license to the program entitles any user to access and use the components of the program as long as the total number of users concurrently accessing and using the components at any one time does not exceed the total number of concurrent user authorizations you have

acquired. Your use of the program components is subject to the limitations under Component Restrictions below.

**Component restrictions**

**IBM Communications Server**

The license to the program entitles you to install and use no more than one copy of the Communications Server component for every 10 registered or concurrent user authorizations. For example, if you acquire use authorizations for 100 users, you may install and use up to 10 copies of the Communications Server in any combination (for instance, 10 copies of the IBM Communications Server for Windows NT and Windows 2000, or five copies of Communications Server for Windows NT and Windows 2000 and five copies of Communications Server for AIX).

**WebSphere Application Server**

The program includes WebSphere Application Server — Express (Application Server — Express). Except as modified by this Agreement, your use of the Application Server — Express components will be governed by the license terms that accompany the Application Server — Express components. The license to the program entitles you to install and use one Application Server — Express instance on a machine with a single processor provided that you acquire 50 registered or concurrent user authorizations. You may use one additional Application Server — Express on one additional processor for each additional 100 registered or concurrent user authorizations that you acquire.

HIS registered or concurrent license	Total processors of WAS (either configuration)
1 — 49	0
50 — 149	1
150 — 249	2
250 — 349	3

For each Application Server — Express to which you are entitled, you are authorized to install and use each component of Application Server — Express on a machine with a single processor. Alternatively, you may install and use each Application Server — Express on a machine with multiple processors if you either:

- Allocate a Application Server — Express to which you are entitled per this Agreement to each additional processor on such machine.
- Acquire a Single Processor PoE of Application Server — Express for each additional processor on such machine.
- For partitionable iSeries and AS/400® machines running OS/400, allocate an Application Server — Express to which you are entitled per this Agreement to each additional processor on such machine or acquire a Single Processor PoE of Application Server — Express for each processor actually used by the entitled Application Server — Express on such machine, as measured or limited using IBM provided tools. To determine the number of processors in a machine actually used by the entitled Application Server — Express, you may aggregate portions of physical processors used in the same machine, but you must acquire an additional Single Processor PoE of Application Server — Express for any remaining fraction of a processor in such machine used by the entitled Application Server — Express after this aggregation.

In addition, this license entitles you to use the Application Server — Express components only to run Host Access Transformation Services and/or Host On-Demand components of the program, to run objects created by these components, and to enable connections with these components to other applications and sources of data. This license does not for instance, entitle you to use the Application Server — Express components to run applications which do not require the Host Access Transformation Services and/or Host On-Demand components of the program to operate. If you wish to use the Application Server — Express components without these restrictions, you must purchase separate authorizations to use the Application Server — Express components.

The license to the program limits your use of Application Server — Express to machines with four or fewer processors (there is no limit if you use Application Server — Express on iSeries and AS/400 machines running OS/400).

### WebSphere Studio

Included with Application Server — Express are WSSD and WDS. The license to the program entitles you to use one instance of a WebSphere Studio component when you acquire 50 registered or concurrent user authorizations. Thereafter, you are entitled to use one additional instance of a WebSphere Studio component for each additional 100 registered or concurrent user authorizations you acquire, up to a total of five instances of a WebSphere Studio component. Your use of the WebSphere Studio component must be in conjunction with the Host Access Transformation Services and/or Host On-Demand components of the program. Subject to these restrictions, you may use the WebSphere Studio component for any purpose. If you wish to use of WebSphere Studio without these restrictions, you must purchase additional of WebSphere Studio licenses.

HIS registered or concurrent license	WSSD licenses
1 — 49	0
50 — 149	1
150 — 249	2
250 — 349	3
350 — 449	4
450 —	5

### DB2 Connect®

The program includes portions of DB2 Connect. You are authorized to install and use one copy of these components only in association with your licensed use of PCOMM in accordance with the terms of the license that accompanies PCOMM.

**Trade-ins:** A Passport trade-in program is available.

- Trade-in from Emulators Only — Customers may trade in any full-function IBM or non-IBM 3270 or 5250 emulation program user licenses for an equal number of HIS registered or concurrent user licenses.
- Trade-in from Web-to-Host Only — Customers may trade in any full-function IBM or non-IBM Web-to-host program user license for an equal number of HIS registered or concurrent user licenses.

- Trade-in from Communications Servers Only — You may trade in any IBM Communications Server concurrent user licenses for an equal number of HIS registered or concurrent user licenses. For each Communications Server for OS/2® V5 or earlier, or Communications Manager for OS/2 installed, you may trade-in for 14 HIS registered or concurrent user licenses.
- Trade-in from Emulators and Communications Servers Combined — When trading in from any full-function IBM or non-IBM 3270 or 5250 emulation program in conjunction with any IBM Communications Server program, you may trade-in the larger number of user licenses (not the combined total number of user licenses) for an equal number of HIS registered or concurrent user licenses.
- Customers who have subscriptions to HIS for iSeries V4 will receive the HIS for iSeries V4.1 media pack and are entitled to all product components included with V4.1.

**Program technical support:** Refer to the individual component products included in the HIS offering for information pertaining to the end of program technical support for specific components.

**IBM Operational Support Services — Support Line:** No

**iSeries software subscription applies:** No

---

## Prices

---

Contact your IBM representative for pricing information for this announcement.

### Trademarks

iSeries is a trademark of International Business Machines Corporation in the United States or other countries or both. Passport Advantage, WebSphere, AIX, OS/400, AS/400, DB2 Connect, and OS/2 are registered trademarks of International Business Machines Corporation in the United States or other countries or both. Windows and Windows NT are trademarks of Microsoft Corporation. Other company, product, and service names may be trademarks or service marks of others.