

IBM WebSphere Commerce - Express



Installation Guide for OS/400

Version 5.5

Note:

Before using this information and the product it supports, be sure to read the general information under “Notices” on page 97

First Edition, September 2003

This edition applies to WebSphere Commerce - Express Version 5.5 and to all subsequent releases. Ensure that you are using the correct edition for the level of the product.

Order publications through your IBM representative or the IBM branch office serving your locality.

IBM welcomes your comments. You can send your comments by using the online IBM WebSphere Commerce documentation feedback form, available at the following URL:

<http://www.ibm.com/software/webservers/commerce/rcf.html>

When you send information to IBM, you grant IBM a nonexclusive right to use or distribute the information in any way it believes appropriate without incurring any obligation to you.

© Copyright International Business Machines Corporation 1996, 2003. All rights reserved.

US Government Users Restricted Rights – Use, duplication or disclosure restricted by GSA ADP Schedule Contract with IBM Corp.

About this book

Document description

This book describes how to install and configure the main components of IBM® WebSphere® Commerce - Express on the OS/400® platform. It is intended for system administrators or for anyone else responsible for performing installation and configuration tasks.

Updates to this book

This Installation Guide, and any updated versions of this Installation Guide, are available as PDF files at the WebSphere Commerce Technical Library Web site:
<http://www.ibm.com/software/commerce/library/>

For additional support information, see the WebSphere Commerce Support site:
<http://www.ibm.com/software/commerce/support/>

To learn about last-minute changes to the product, see the updated product README file, which is also available from the WebSphere Commerce Technical Library Web site:
<http://www.ibm.com/software/commerce/library/>

If you are installing on a system that has an earlier version of WebSphere Commerce and supported products installed, see the *WebSphere Commerce Migration Guide*.

Updates from the last version of this document are identified by revision characters contained in the margin. This book uses the following conventions for revision characters:

- The "+" character identifies updates that have been made in the current version of this document.
- The "|" character identifies any updates that have been made in the previous versions of this document.

Conventions used in this book

This book uses the following highlighting conventions:

Boldface type	Indicates commands or graphical user interface (GUI) controls such as names of fields, icons, or menu choices.
Monospace type	Indicates examples of text you enter exactly as shown, file names, and directory paths and names.
<i>Italic type</i>	Used to emphasize words. Italics also indicate names for which you must substitute the appropriate values for your system.



This icon marks a Tip - additional information that can help you complete a task.

Important

These sections highlight especially important information.

Attention

These sections highlight information intended to protect your data.

Variables used in this book

Some of the key variables used in this book are as follows:

host_name

This variable represents the fully qualified host name of your WebSphere Commerce server (for example, `server.mydomain.ibm.com` is fully qualified).

instance_name

This variable represents the name of the WebSphere Commerce instance with which you are working (for example, `ma111`).

WAS_instance_name

This variable represents the name of the WebSphere Application Server with which your WebSphere Commerce instance is associated.

cell_name

This variable represents the name of the WebSphere Application Server cell.

payments_instance_name

This variable represents the name of the WebSphere Commerce Payments instance with which you are working.

Path variables

This Guide uses the following variables to represent directory paths:

Payments_installdir

The installation directory for WebSphere Commerce Payments on your system: `/QIBM/ProdData/CommercePayments/V55`.

Payments_userdir

The directory for all the data that is used by WebSphere Commerce Payments which can be modified or needs to be configured by the user: `/QIBM/UserData/CommercePayments/V55`.

WAS_installdir

The installation directory for WebSphere Application Server on your system: `/QIBM/ProdData/WebAS5/Base`.

WAS_userdir

The directory for all the data that is used by WebSphere Application Server which can be modified or needs to be configured by the user: `/QIBM/UserData/WebAS5/Base/WAS_instance_name`.

WC_installdir

The installation directory for WebSphere Commerce. It contains all the WebSphere Commerce proprietary data on your system:
/QIBM/ProdData/CommerceServer55.

WC_userdir

The directory for all the data that is used by WebSphere Commerce which can be modified or needs to be configured by the user:
/QIBM/UserData/CommerceServer55.

Note: The above default installation paths cannot be altered or modified on iSeries™. The WebSphere Commerce for iSeries product expects the above directories to exist and will not function properly if they do not exist.

Knowledge requirements

This book should be read by system administrators or anyone else responsible for installing and configuring WebSphere Commerce.

People who are installing and configuring WebSphere Commerce should have knowledge in the following areas:

- IBM @server® iSeries and the OS/400 operating system
- IBM DB2 Universal Database™ for iSeries
- Basic Command Language commands
- Basic SQL commands
- The Internet

To create and customize your store, you require knowledge of the following:

- WebSphere Application Server
- HTML and XML
- Structured Query Language (SQL)
- Java™ programming

For information on developing your store front and store data assets, refer to the *WebSphere Commerce Store Development Guide*. For information on developing or customizing your business logic (or back office business logic) see the *WebSphere Commerce Programming Guide and Tutorials* document.

Contents

About this book	iii
Document description	iii
Updates to this book	iii
Conventions used in this book	iii
Variables used in this book	iv
Path variables.	iv
Knowledge requirements	v

Part 1. Getting ready to install WebSphere Commerce 1

Chapter 1. Welcome to WebSphere Commerce - Express 3

Products included with WebSphere Commerce - Express	3
Supported Web browsers	4
Port numbers used by WebSphere Commerce - Express	4
Locales used by WebSphere Commerce - Express	5

Chapter 2. Preinstallation requirements 7

Prerequisite hardware	7
Prerequisite software	7
Reviewing the README file	8

Chapter 3. Recommended topologies . . 9

One-node topology	9
Installing WebSphere Commerce - Express in a one-node topology	9
Two-node topology	11
Development environment topologies	12

Chapter 4. Understanding iSeries unique concepts 15

The OS/400 file systems used by WebSphere Commerce.	15
The QSYS.LIB file system.	15
The root file system	15
Querying the layout of the database	17

Part 2. Installing WebSphere Commerce 19

Chapter 5. Installing WebSphere Commerce 21

IDs required during installation	22
--	----

Chapter 6. Completing a custom installation 23

Using the graphical install for a custom installation (recommended)	24
---	----

Completing the console install for a custom installation	27
Verifying a custom installation	28

Chapter 7. Verifying your installation 31

WebSphere Application Server installation log.	31
WebSphere Commerce installation log	32
WebSphere Commerce Payments installation	32
The next step.	33

Part 3. Creating a WebSphere Commerce and a WebSphere Commerce Payments instance 35

Chapter 8. Before you create or modify an instance with Configuration Manager 37

Installing the Configuration Manager client.	37
Configuration Manager prerequisites	38
Instance creation requirements using a remote database	38
Modifying your iSeries user profile	39
Starting the Configuration Manager	40
Stopping the Configuration Manager	41
The next step.	42

Chapter 9. Creating a WebSphere Commerce instance 43

Considerations when creating a WebSphere Commerce instance.	43
Creating a new WebSphere Commerce instance	43
Verifying the instance creation	44
Completing the configuration of a remote database	45
Setting the time zone	45
The next step.	46

Chapter 10. Creating a WebSphere Commerce Payments instance 47

Considerations when creating a WebSphere Commerce Payments instance	47
Creating a new WebSphere Commerce Payments instance	48
Verifying the instance creation	49
The next step.	49

Part 4. Last steps 51

Chapter 11. Mandatory post-instance creation tasks. 53

Web server post-creation tasks	53
Local Web server post-instance creation tasks	53
Remote Web server post-instance creation tasks	53

Part 5. Installation and administration tasks 55**Chapter 12. WebSphere Commerce tasks 57**

Starting or stopping a WebSphere Commerce instance	57
Starting the WebSphere Commerce instance	57
Stopping the WebSphere Commerce instance	58
Starting or stopping a WebSphere Commerce Payments instance	58
Starting or stopping a WebSphere Commerce Payments instance from QShell session	59
Modifying a WebSphere Commerce or WebSphere Commerce Payments instance	59
Deleting a WebSphere Commerce instance	60
Deleting a WebSphere Commerce Payments instance	61

Chapter 13. WebSphere Application Server tasks 63

Starting or stopping an application server	63
Starting the WebSphere Application Server Administrative Console	64
Starting the WebSphere Application Server subsystem	64
Starting the QEJBAS5 subsystem	65
Ending the QEJBAS5 subsystem	65
Regenerating the WebSphere Application Server Web server plug-in configuration file	65

Chapter 14. Remote Web server tasks 67

Copying the plugin-cfg.xml file to Web server	67
Merging the WebSphere Commerce Payments plugin-cfg.xml file	67
Post-Store publishing tasks	69

Chapter 15. Setting and changing passwords 71

Changing your Configuration Manager password	71
Changing the WebSphere Commerce Site Administrator password	71
Resetting the Site Administrator password	72
Recovering the Site Administrator ID	73

Chapter 16. Web Server tasks 75

Starting and stopping IBM HTTP Server	75
Starting your IBM HTTP Server instance	75
Stopping your IBM HTTP Web Server instance	76

Starting and stopping the IBM HTTP administrator 77

Chapter 17. User IDs required when administering WebSphere Commerce . 79

Creating an iSeries user profile	80
--	----

Part 6. Appendixes. 83**Appendix A. Known problems and limitations 85**

Web server problems and limitations	85
Secure (HTTPS) URLs do not work	85
WebSphere Commerce instance problems and limitations	85
WebSphere Commerce instance does not start properly	85
Usage notes for the console install	87
WebSphere Commerce Payments instance problems and limitations	88
Remote WebSphere Commerce Payments instance does not work	88
WebSphere Commerce Payments instance does not start	89

Appendix B. Uninstalling WebSphere Commerce Components 91

Uninstalling WebSphere Commerce	91
Uninstalling WebSphere Commerce Configuration Manager client	91
Uninstalling WebSphere Application Server	92
Uninstalling WebSphere Application Server Network Deployment	92
Reinstalling WebSphere Commerce and its Components	92

Appendix C. Where to find more information 93

WebSphere Commerce information	93
WebSphere Commerce online help	93
WebSphere Commerce technical library	93
WebSphere Commerce Payments information	93
IBM HTTP Server information	95
WebSphere Application Server information	95
DB2 Universal Database information	95
Other IBM publications	95

Notices 97

Trademarks	98
----------------------	----

Part 1. Getting ready to install WebSphere Commerce

Chapter 1. Welcome to WebSphere Commerce - Express

This book describes how to install and configure WebSphere Commerce - Express Version 5.5 for IBM @server iSeries on OS/400. It is intended for system administrators or for anyone else responsible for performing installation and configuration tasks.

Important

Unless otherwise noted, all references to *WebSphere Commerce* in this book refer to WebSphere Commerce - Express.

Products included with WebSphere Commerce - Express

The following products are packaged with WebSphere Commerce - Express:

- WebSphere Commerce - Express:
 - WebSphere Commerce server, which includes:
 - Product Advisor
 - WebSphere Commerce Accelerator
 - WebSphere Commerce Administration Console
 - WebSphere Commerce Organization Administration Console
 - WebSphere Commerce Payments, which includes:
 - WebSphere Commerce Payments Cassette for VisaNet
 - WebSphere Commerce Payments Cassette for BankServACH
 - WebSphere Commerce Payments Cassette for Paymentech
 - WebSphere Commerce Payments CustomOffline Cassette
 - WebSphere Commerce Payments OfflineCard Cassette
 - IBM WebSphere Commerce Analyzer 5.5
- WebSphere Application Server 5.0

Important

All WebSphere Commerce - Express components and the supporting software must run on the same operating system. The operating system must meet the requirements outlined in Chapter 2, "Preinstallation requirements," on page 7.

WebSphere Commerce - Express does not support a heterogeneous operating environment — all nodes in a multiple node topology must run the same version and level of operating system as documented in Chapter 2, "Preinstallation requirements," on page 7.

The only exception to this is the WebSphere Commerce Configuration Manager client, which must run a Windows® workstation. The Configuration Manager client communicates with the Configuration Manager server running on the @server iSeries machine.

Supported Web browsers

You can only access the WebSphere Commerce tools and online help using Microsoft® Internet Explorer 6.0 from a machine running a Windows operating system on the same network as your WebSphere Commerce machine. You must use Internet Explorer full version 6.0 (also known as Internet Explorer 6.0 Service Pack 1 and Internet Tools) with the latest critical security updates from Microsoft — prior versions do not support full functionality of WebSphere Commerce tools.

Shoppers can access Web sites by using any of the following Web browsers, all of which have been tested with WebSphere Commerce:

- AOL 7 or above for Windows
- Microsoft Internet Explorer:
 - Version 5.5 or higher for Windows
 - Version 5 or higher for Macintosh
- Mozilla Version 1.0 or higher
- Netscape Version 6.0 or higher
- Netscape Navigator Version 4.6 or higher

Port numbers used by WebSphere Commerce - Express

The following is a list of the default port numbers used by WebSphere Commerce - Express or its component products. Ensure that you do not use these ports for non-WebSphere Commerce - Express applications. If you have a firewall configured in your system, ensure that you can access these ports.

For instructions for learning which ports are in use, refer to your operating system documentation.

Important

This section only lists ports required by the software provided with WebSphere Commerce - Express. For port numbers required by non-IBM software, refer to the documentation for the non-IBM software package.

Port Number

Used By

- | | |
|------|---|
| 21 | FTP port. This port is required when creating a WebSphere Commerce or WebSphere Commerce Payments instance that uses a remote Web server. |
| 80 | IBM HTTP Server. |
| 389 | Lightweight Directory Access Protocol (LDAP) Directory Server. |
| 443 | IBM HTTP Server – secure port. This secure port requires SSL. |
| 1099 | WebSphere Commerce Configuration Manager server. |
| 2001 | IBM HTTP Server Administration port. |
| 2010 | IBM HTTP Server Administration SSL port. |
| 2809 | WebSphere Application Server Bootstrap address. |
| 5432 | WebSphere Commerce Payments non-secure server. |
| 5433 | WebSphere Commerce Payments secure server. This secure port requires SSL. |

- 5557 WebSphere Application Server Internal Java Messaging Service server.
- 5558 WebSphere Application Server Java Messaging Service server queued address.
- 5559 WebSphere Application Server Java Messaging Service direct address.
- 7873 WebSphere Application Server DRS client address.
- 8000 WebSphere Commerce Tools. This secure port requires SSL.
- 8002 WebSphere Commerce Administration Console. This secure port requires SSL.
- 8004 WebSphere Commerce Organization Administration Console. This secure port requires SSL.
- 8880 WebSphere Application Server SOAP Connector address.
- 9043 WebSphere Application Server Administration Console Secure Port. This secure port requires SSL.
- 9080 WebSphere Application Server HTTP Transport.
- 9090 WebSphere Application Server Administration Console Port.
- 9501 WebSphere Application Server Secure Association Service.
- 9502 WebSphere Application Server Common Secure Port.
- 9503 WebSphere Application Server Common Secure Port.

Locales used by WebSphere Commerce - Express

WebSphere Commerce - Express only uses valid Java locales. Ensure that your systems have the appropriate locale installed for your language. Ensure that any locale-related environment variables are set to include the WebSphere Commerce-supported locale.

Table 1. OS/400 locale codes supported by WebSphere Commerce - Express

Language	Locale Code
German	de_DE
English	en_US
Spanish	es_ES
French	fr_FR
Italian	it_IT
Japanese	ja_JP
Korean	ko_KR
Brazilian Portuguese	pt_BR
Simplified Chinese	zh_CN
Traditional Chinese	zh_TW

Chapter 2. Preinstallation requirements

This section describes the steps you need to perform before you install WebSphere Commerce.

Important

You *must* complete these preinstallation steps to ensure that installation is successful.

Prerequisite hardware

You must ensure that you meet the following minimum hardware requirements before installing WebSphere Commerce:

- Any of the following servers (recommended minimums):
 - AS/400e™ server Model 170 with processor feature 2385
 - AS/400e server Model 720 with processor feature 2062
 - @server iSeries server Model 270 with processor feature 2252
 - @server iSeries Server Model 810 with processor feature 2465 and a CPW of 750
 - @server iSeries server Model 820 with processor feature 2396
- 1.5 GB of memory (recommended minimum)

Note: Systems below these recommended minimums may be used in environments that support a limited number of users and where longer server initialization times can be tolerated.

Furthermore, you require the following:

- A workstation, running a Windows operating system and capable of running a Web browser such as Internet Explorer with a graphics-capable monitor
- A mouse or other pointing device
- A local area network (LAN) adapter that is supported by the Transmission Control Protocol/Internet Protocol (TCP/IP) protocol

Prerequisite software

You must ensure that you meet the following minimum software requirements before installing WebSphere Commerce:

- OS/400 Version 5 Release 2 (V5R2M0) or higher (5722SS1) which includes:
 - DB2 Universal Database for iSeries V5R2M0
 - Host Servers (5722SS1 option 12). You can start the host servers by using the Start Host Server (STRHOSTSVR) command by typing STRHOSTSVR *ALL on the OS/400 command line. The QSERVER subsystem must be running on the iSeries system.
 - QShell Interpreter (5722SS1 option 30)
 - Portable App Solutions Environment (5722SS1 option 33)
 - Digital Certificate Manager (5722SS1 option 34)

- International Components for Unicode (5722SS1 option 39)
- IBM Java Developer Kit, Version 1.3 (5722JV1 option 5)
- IBM HTTP Server Powered by Apache (5722DG1).
- Crypto Access Provider 128-Bit for AS/400® (5722AC3)
- TCP/IP Connectivity Utilities (5722TC1)
- In addition, you may also want to install the following optional products:
 - iSeries Access (5722XW1 options *BASE and 1)
 - iSeries Access for Windows (5722XE1)
 - DB2® Query Manager and SQL Development Kit (5722ST1)
 - WebSphere Application Server Network Deployment (5733WS5 option 5)
 - LDAP Directory Services (5722SS1). The LDAP product is included with OS/400 V5R2M0, and will already be installed on your iSeries system.

Reviewing the README file

Reviewing the README file is an important prerequisite for installing WebSphere Commerce. The README file contains information about last-minute changes to the product. Last-minute changes may include additional fixes that must be installed before using WebSphere Commerce.

Failure to install any last minute fixes listed in the README file will result in WebSphere Commerce not functioning correctly.

The README file can be found in the root directory of the WebSphere Commerce Disk 1 CD. The README file name is:

`readme_ language_code .htm`

where *language_code* is one of the following:

Language	Language code
German	de_DE
English	en_US
Spanish	es_ES
French	fr_FR
Italian	it_IT
Japanese	ja_JP
Korean	ko_KR
Brazilian Portuguese	pt_BR
Simplified Chinese	zh_CN
Traditional Chinese	zh_TW

Chapter 3. Recommended topologies

This chapter describes recommended topologies for WebSphere Commerce - Express components and the supporting software, such as the database server and the Web server. The topologies described in this chapter are the most common topologies used with WebSphere Commerce - Express, however other topologies of WebSphere Commerce - Express are still possible.

In all topologies, all nodes must be running the same operating system at the same level. This includes any patches, revisions, service packs or fix packs required by WebSphere Commerce - Express.

In this chapter the following terms are used:

database node

A node in a topology that only contains the database server used by WebSphere Commerce - Express.

Web server node

A node in a topology that only contains the Web server used by WebSphere Commerce - Express.

WebSphere Commerce node

A node in a topology that contains the WebSphere Commerce server. While the node may also contain the database server or Web server, depending on the topology, if a node contains the WebSphere Commerce server, it will be referred to as the WebSphere Commerce node.

One-node topology

In a one-node topology, all WebSphere Commerce - Express components and the supporting software are installed on a single node. This includes your database server, Web server, WebSphere Application Server, WebSphere Commerce Payments, and the WebSphere Commerce server.

Installing WebSphere Commerce - Express in a one-node topology

To install WebSphere Commerce in a one-node topology, you have two options:

Quick installation

You can only use the quick installation option of the WebSphere Commerce - Express installation wizard to install WebSphere Commerce - Express in a one-node topology if the machine meets the following criteria:

- No version or edition of WebSphere Commerce - Express is installed on the machine.
- No version or edition of WebSphere Application Server is installed on the machine.

During a quick installation, you can choose not to install the WebSphere Commerce Payments component, but all other WebSphere Commerce components and supporting software are installed.

A quick installation creates a WebSphere Commerce instance after all components and supporting software have been installed. If you choose to install WebSphere Commerce Payments, a WebSphere Commerce Payments instance is created.

Instructions for completing a quick installation are provided in *WebSphere Commerce - Express Quick Beginnings*.

Custom installation

You can use the custom installation option of the WebSphere Commerce - Express installation wizard to install WebSphere Commerce - Express in a one-node topology as long as the following conditions have been met:

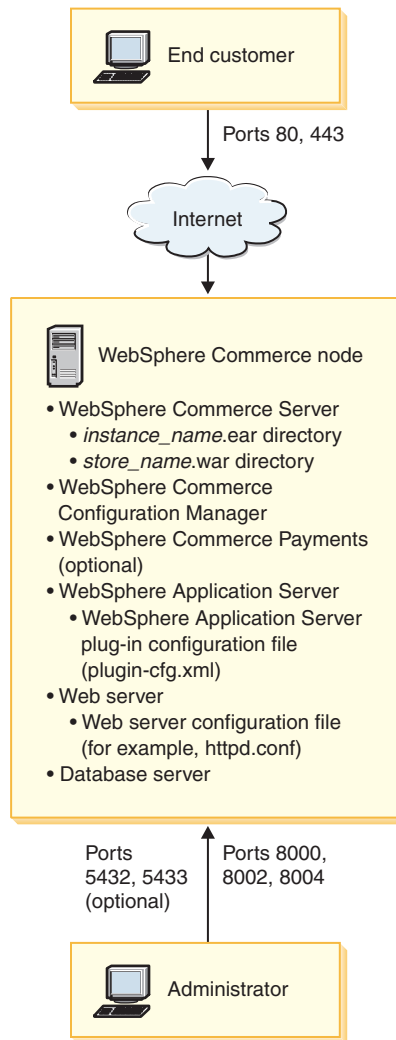
- The node meets the hardware, operating system, and networking requirements for WebSphere Commerce - Express.
- If WebSphere Application Server is already installed on the node, WebSphere Application Server must be the edition and version of WebSphere Application Server supported by WebSphere Commerce - Express.

If you have WebSphere Application Server Version 5.0 or Version 5.0.1 installed, ensure that is upgraded to WebSphere Application Server Version 5.0.2 after the installation of WebSphere Commerce - Express.

A custom installation does not create a WebSphere Commerce instance or a WebSphere Commerce Payments instance. The instances must be created after completing the installation.

Instruction for completing a custom installation are provided in *WebSphere Commerce - Express Installation Guide*.

The following diagram shows a one-node topology:



Note: WebSphere Commerce Configuration Manager consists of two components: a GUI client and a server. The Configuration Manager server is always installed on the same node as WebSphere Commerce Server and WebSphere Commerce Payments.

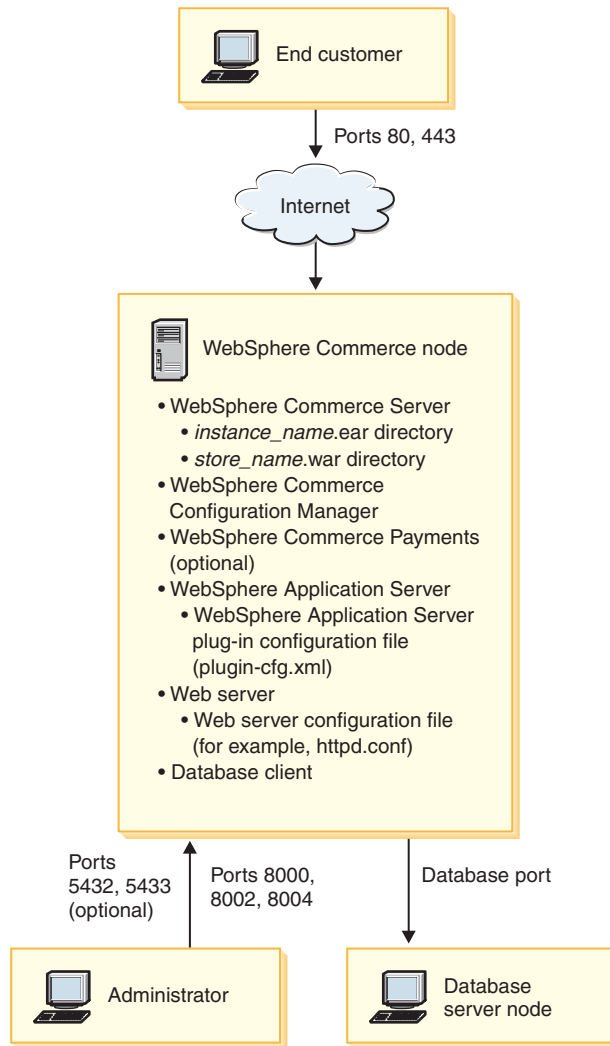
In order to use the WebSphere Commerce Configuration Manager client, you must install the client software on a workstation capable of displaying graphics.

The WebSphere Commerce Configuration Manager client can be installed separately using the custom installation option of the installation wizard.

Two-node topology

In a two-node topology, the database server is installed on one node and all WebSphere Commerce - Express components and the Web server are installed on a different node.

The following diagram shows a two-node topology:



Note: WebSphere Commerce Configuration Manager consists of two components: a GUI client and a server. The Configuration Manager server is always installed on the same node as WebSphere Commerce Server and WebSphere Commerce Payments.

In order to use the WebSphere Commerce Configuration Manager client, you must install the client software on a workstation capable of displaying graphics.

The WebSphere Commerce Configuration Manager client can be installed separately using the custom installation option of the installation wizard.

Development environment topologies

The WebSphere Commerce development environment supports the following topologies:

one-node development topology

In this topology, all components of the WebSphere Commerce development environment are installed on a single node.

two-node development topology

In this topology, the database server is installed on one node and all other WebSphere Commerce development environment components are installed on another node.

three-node development topology

In this topology, the database server is installed on one node, WebSphere Commerce Payments is installed on a second node, and the remaining WebSphere Commerce components are installed on a third node.

The three-node development topology is not directly supported by the WebSphere Commerce development environment installation wizard since a full installation of WebSphere Commerce Payments is required — WebSphere Commerce Payments running in the development environment is not supported in this topology.

It is recommend that you install the WebSphere Commerce development environment on a separate node from the nodes that make up the WebSphere Commerce production, testing, or staging environments.

Instructions on installing the development environment are provided in *WebSphere Commerce - Express Developer Edition Installation Guide*.

Chapter 4. Understanding iSeries unique concepts

This chapter describes concepts that are unique to the IBM @server iSeries and the OS/400 operating system. It includes the following:

- A discussion of the different file systems within the Integrated File System (IFS)
- File organization for the WebSphere Commerce system

The OS/400 file systems used by WebSphere Commerce

It is important that you understand the *Integrated File System (IFS)* so that you can decide where to store your Web assets, such as JSP and HTML files, and how to configure the corresponding file servers.

A file system provides the support to access specific segments of storage that are organized as logical units. These logical units are files, directories, folders, libraries, and objects.

Each file system has a set of logical structures and rules for interacting with information in storage. These structures and rules may be different from one file system to another. From the perspective of structures and rules, the OS/400 support for accessing database files and various other object types through libraries can be thought of as a file system. Similarly, the OS/400 support for accessing documents (which are really stream files) through the folder structure behaves as a separate file system.

The Integrated File System treats the library support and folder support as separate file systems. Other types of OS/400 file management support, all with their own capabilities, function as separate file systems. The iSeries file systems that are used by WebSphere Commerce are described below. For information about other OS/400 file systems, refer to your OS/400 documentation.

WebSphere Commerce stores information in two different file systems within the Integrated File System: *QSYS.LIB* library file system and the *root* file system.

The QSYS.LIB file system

The QSYS.LIB library file system supports the iSeries library structure. This file system provides access to database files and all of the other iSeries object types that the library support manages.

The installation and configuration process creates the QWEBCOMM55 library in the QSYS.LIB file system. It contains the following types of objects:

- *MSGF (A message file)
- *PRDDFN (A product definition object)

The root file system

The root, or */*, file system takes full advantage of the hierarchical directory structure and stream file support of the Integrated File System. The root file system has the characteristics of the *DOS* and *OS/2*[®] file systems.

WebSphere Commerce uses a divided root file structure. All the data that is used by WebSphere Commerce which can be modified or needs to be configured by the user is placed in the UserData subdirectory, and all of the WebSphere Commerce proprietary data is placed in the ProdData subdirectory. This has been done to make a clear distinction between the two types of information, to make future migration as simple as possible, and to facilitate the servicing of files therein.

Notes:

1. You can only change the files that are contained in the instance root path, which by default is:

WC_userdir/instances/instance_name

Default values for *WC_userdir* are listed in “Path variables” on page iv.

2. When the instance’s Enterprise application is deployed, all of the JSP files and other assets are stored in:

WAS_userdir/installedApps/cell_name/WC_instance_name.ear

Files in this directory can be modified as well. Default values for *WAS_userdir* are listed in “Path variables” on page iv.

When you configure WebSphere Commerce for a particular instance, the Configuration Manager copies all of the required files for the selected configuration option to the *WC_userdir* path. You should not change the original files, contained in the following path:

WC_installdir

Default values for *WC_installdir* and *WC_userdir* are listed in “Path variables” on page iv.

Attention: Applying PTFs or reinstalling the product may delete or overwrite the files in the ProdData directory path. You should therefore not store any customized files in the ProdData directory path.

The table below lists the directories and stream files that are created by the WebSphere Commerce installation and configuration process and stored in the root file system. The directory path */instance_root/* refers to the directory path *WC_userdir/instances/instance_name*, where *instance_name* is the name you provide for your instance during configuration.

Path	Significance
<i>/instance_root/xml/instance_name.xml</i>	The instance configuration file. This file contains configuration settings for the WebSphere Commerce server.
<i>/instance_root/web</i>	The IBM HTTP Server document root directory.
<i>/instance_root/conf</i>	The directory containing the IBM HTTP Server configuration file (httpd.conf).
<i>WAS_userdir/installedApps/cell_name/WC_instance_name.ear</i>	The directory containing instance properties files. For exact location of customized assets, refer to the <i>WebSphere Commerce Programming Guide and Tutorials</i> document.

Path	Significance
<code>/instance_root/logs</code>	The directory containing WebSphere Commerce log files.
<code>/instance_root/xml</code>	The directory containing WebSphere Commerce instance configuration XML files.

Default values of `WAS_userdir` are listed in "Path variables" on page iv.

Querying the layout of the database

You can query information about the database layout by using SQL statements. You can use either the DB2/400 Query Manager and the SQL development kit, or you can use iSeries Navigator. To use iSeries Access to perform database queries, do the following:

1. Start iSeries Navigator from the PC where it is installed.
2. Expand **Databases**, right-click the appropriate Relational Database, and select **Run SQL Scripts**. The **Run SQL Scripts** window opens.
3. Type the desired SQL statement in the window. For example,

- To view a list of all the tables in the database, type (on one line, uppercase only):

```
SELECT TABLE_NAME FROM QSYS2.SYSTABLES WHERE
       TABLE_SCHEMA='DB_SCHEMA_NAME'
```

- To view a list of the columns in a particular table, type (on one line):

```
SELECT * FROM QSYS2.SYSCOLUMNS WHERE TABLE_SCHEMA='DB_SCHEMA_NAME'
       AND TABLE_NAME='TABLE_NAME'
```

- To view the records in a particular table, type:

```
SELECT * FROM 'DB_SCHEMA_NAME'.'TABLE_NAME'
```

where

`'DB_SCHEMA_NAME'`

is the name of the instance database.

`'TABLE_NAME'`

is the name of the database table that you want to query.

For more information about these and other SQL statements, refer to the *DB2 Universal Database for iSeries SQL Reference* which you can find at the following Web site:

<http://publib.boulder.ibm.com/html/as400/infocenter.html>

Part 2. Installing WebSphere Commerce

Chapter 5. Installing WebSphere Commerce

The instructions in this chapter will guide you through the installation and configuration of WebSphere Commerce on a single node. This installation has the following prerequisites:

- Your system meets all the hardware and software prerequisites outlined in Chapter 2, “Preinstallation requirements,” on page 7.

The following installation options are available:

Quick Installation:

Perform™ a quick installation to install all WebSphere Commerce components on a single node. The node must have no WebSphere Commerce -Express components or WebSphere Application Server installed. Instructions for completing a quick installation are covered in *WebSphere Commerce - Express Quick Beginnings*.

Custom Installation:

A custom installation can be used to install WebSphere Commerce components on different nodes. Perform a custom installation if you want WebSphere Commerce Payments to run remotely from WebSphere Commerce.

All nodes must be running the same operating system meeting the operating system requirements listed in Chapter 2, “Preinstallation requirements,” on page 7.

Perform a custom installation for any of the following reasons:

- You do not want to have the WebSphere Commerce installation wizard create a WebSphere Commerce instance and a WebSphere Commerce Payments instance. The quick installation option of the installation wizard creates a WebSphere Commerce instance and a WebSphere Commerce Payments instance.
- Your @server iSeries system already has WebSphere Application Server Version 5.0 installed.
- You want to install WebSphere Commerce Payments remotely from the WebSphere Commerce node.
- You want to install only certain components of WebSphere Commerce.

Completing a custom installation is described in Chapter 6, “Completing a custom installation,” on page 23.

Note:

If your iSeries system does not have WebSphere Application Server Version 5.0 installed, it will be installed for some components in a custom installation. The installation of the WebSphere Application Server 5.0 product also installs the WebSphere MQ classes for Java product (5639C34) on your iSeries system if it is not already installed.

The installation of the 5639C34 product will fail if your iSeries has subsystem QMQM active. Ensure that subsystem QMQM is ended prior to starting an installation of the WebSphere Commerce and WebSphere Application Server products.

IDs required during installation

To install and configure WebSphere Commerce, you must use an iSeries user profile with USRCLS(*SECOFR) or use the QSECOFR user profile. Refer to “Creating an iSeries user profile” on page 80 to either:

- Create a user profile.
- Ensure that your existing iSeries user profile has the correct localized settings.

Chapter 6. Completing a custom installation

When you perform a custom installation, each of the following components can be installed on a separate node:

WebSphere Commerce components

WebSphere Commerce Server

This component provides all of the function of WebSphere Commerce - Express except for WebSphere Commerce Payments.

Selecting this component installs the following on the node:

- WebSphere Commerce server
- WebSphere Commerce Configuration Manager server
- WebSphere Commerce online help
- WebSphere Commerce sample stores
- WebSphere Application Server base product

If you plan to use a remote or local DB2 Universal Database with the WebSphere Commerce Server component, no extra steps are required when installing the WebSphere Commerce Server component.

WebSphere Commerce example files

This component provides various sample files, including those for Product Advisor, Web Services and Payments.

WebSphere Commerce online help

This component installs the online help files for WebSphere Commerce (including WebSphere Commerce Payments). Installing this component copies the online help files to your iSeries system, but it does not install a Web server to view the files over HTTP — the files can only be viewed by opening the files from the node's file system.

If you are using a multiple node topology, install this component on the Web server node.

WebSphere Commerce Payments

This component installs all of the function of WebSphere Commerce Payments.

Selecting this component installs the following on the node:

- WebSphere Commerce Payments
- WebSphere Commerce Configuration Manager server
- WebSphere Commerce online help
- WebSphere Application Server base product

If you plan to use a remote or local DB2 Universal Database with the WebSphere Commerce Payments component, no extra steps are required when installing the WebSphere Commerce Payments component.

Note: If you plan to publish the FashionFlow sample store in WebSphere Commerce - Express, you must install

WebSphere Commerce Payments. For more information on the FashionFlow sample store, refer to *WebSphere Commerce Sample Store Guide*.

WebSphere Commerce Payments is not required to publish the ExpressStore.sar store archive file. For more information on the Express store, refer to *WebSphere Commerce - Express Easy Start Guide*.

You can install WebSphere Commerce - Express Version 5.5 components in two ways:

- From a Windows 2000 machine, or any version of a Windows machine that supports Universal Disk Format (UDF) CDs (recommended method):
 - The Windows machine needs to have a CD drive and be connected on the same TCP/IP network as your @server iSeries machine.
 - The GUI installation panels will guide you through the installation process. Depending on your network and @server iSeries machine, the installation time may take up to 3 hours.
 - This type of installation is called a *graphical install*.
- From an iSeries 5250 session (alternative method)
 - The OS/400 command line installation will guide you through the installation process.
 - Depending on your @server iSeries machine, the install time may take 3 hours or longer.
 - This type of installation is called a *console install*.

For the detailed steps on these types of installations, see the sections below.

Using the graphical install for a custom installation (recommended)

To perform a custom installation using the graphical install, do the following:

1. Insert WebSphere Commerce - Express CD 1 into the CD-ROM drive on the remote Windows system.

The WebSphere Commerce - Express LaunchPad starts. Select the language for the LaunchPad and click **OK** to continue.

Note: The language selection is only available in the National Language version of WebSphere Commerce - Express and not available for the English version.

The LaunchPad provides the following options:

ReadMe File

This option displays the WebSphere Commerce - Express README file.

Quick Beginnings Guide

This option opens the PDF version of *WebSphere Commerce - Express Quick Beginnings* if Adobe Acrobat Reader is installed on the system on which you are running the LaunchPad.

Install Product

This option starts the WebSphere Commerce - Express installation wizard.

Product Library

This option opens your default Web browser to display the WebSphere Commerce Library Web site.

Support

This option opens your default Web browser to display the WebSphere Commerce Support Web site.

Exit This option exits the LaunchPad.

If the LaunchPad does not start automatically when you insert the CD, do the following:

- a. Start a command prompt session.
- b. Switch directories to the WebSphere Commerce CD 1 CD-ROM drive.
- c. Enter the following command:

```
autorun.exe
```

Select **Install Product** to start the installation wizard.

Note: If you do not want to start the installation wizard from the LaunchPad, do the following:

- a. Start a command prompt session.
- b. Switch directories to the WebSphere Commerce - Express CD 1 CD-ROM drive.
- c. Enter the following command:

```
iSeriesServer.bat
```

2. After a few moments, the @server iSeries Logon Information window displays. Enter the System Name, User Profile, and Password for the @server iSeries system on which you are installing WebSphere Commerce components. Ensure that you log on to your @server iSeries system as a user with SEC0FR class authority. Click **Next**.
3. For National Language versions only, select the installation language and click **OK**. The software will be installed in this language, regardless of the language settings of your system.

For the English language version, the selection panel does not appear; the installation language is English (en_US) by default.

4. Read the Welcome panel and click **Next**.
5. The Software License Agreement panel displays. Review the terms of the license agreement.

If you accept the terms of the license agreement, select **I accept the terms in the license agreement** and click **Next** to accept the terms.

If you decline the terms of the license agreement, select **I do not accept the terms in the license agreement** and click **Next**. A Confirmation window displays with the message: Do you really wish to decline the license agreement? Click **Yes** to exit the installation program, *or* click **No** to return to the Software License Agreement panel.

6. If you accept the terms of the license agreement, the Install Type panel displays. Select **Custom Installation** and click **Next**.
7. Select the component(s) you want to install on the node. Click **Next** to continue.

Note: Descriptions of each component are provided at the beginning of this chapter.

The default destination directory for WebSphere Commerce displays.

If WebSphere Commerce Payments was selected, the default destination directory for WebSphere Commerce also displays.

Click **Next** to continue.

8. If you are installing only WebSphere Commerce example files, go to step 10.
9. Select the language of the documentation that you want installed and click **Next**.
10. Confirm your installation choices and click **Next**. (To modify your choices, click **Back**.)
11. If you are installing only the WebSphere Commerce example files or the WebSphere Commerce online help, go to step 15.
12. If you are installing the WebSphere Commerce Server component or WebSphere Commerce Payments and if the WebSphere Application Server Version 5.0 product is already installed on your @server iSeries system, go to step 15. Otherwise, insert the WebSphere Application Server for @server iSeries Disk 1 CD into the CD-ROM drive on the Windows system and click **Next**. A DOS window opens. The details of the WebSphere Application Server product installation are displayed.
13. In the same DOS window, when the following message displays, insert the WebSphere Application Server for @server iSeries Disk 2 CD into the CD-ROM drive on the Windows system and then press **Enter**:
Insert disk 2 or 2. Please press Enter key when ready.

The following messages should appear when the installation is complete:

```
Installation completed successfully.  
Please read the Installation and Initial Configuration documentation.  
Please press the Enter key to end the installation program.
```

After you press **Enter**, the DOS window closes.

14. Navigate back to the WebSphere Commerce install screen. Wait until the screen displays the following:
Insert the IBM WebSphere Commerce - Express CD 1 and specify the location of the CD-ROM drive below.

Remove the WebSphere Application Server CD from the drive and insert the WebSphere Commerce - Express Disk 1 CD into the CD-ROM drive. Click **Next**.

Note: The location of the CD-ROM drive should already be entered. This drive should be the drive that you started the WebSphere Commerce install from.

15. The WebSphere Commerce installation begins. A window indicating the percentage that has been completed is shown in the bottom corner of the screen.
16. On the InstallShield Wizard panel, click **Next** to continue.
17. From the Installation Complete panel, exit the Installation Wizard by clicking **Finish**.

The Express LaunchPad window is displayed. From the LaunchPad window, you can choose other options.

Note: After you have completed the custom installation, you must apply the WebSphere Application Server PTFs and any applicable OS/400 product PTFs. Refer to the WebSphere Commerce product README file for information on applying these PTFs. The latest version of the README is available from the WebSphere Commerce Technical Library Web site (<http://www.ibm.com/software/commerce/library/>).

After completing the custom installation, go to “Verifying a custom installation” on page 28.

Completing the console install for a custom installation

Before completing a console install, you should review “Usage notes for the console install” on page 87.

To perform a custom installation using a console install, do the following:

1. Log on to the @server iSeries system where you will install WebSphere Commerce. Ensure that you log on as a user with SECOFR class authority.
2. Insert WebSphere Commerce - Express CD 1 in your @server iSeries CD-ROM drive.
3. Enter the PASE shell using the following command:
`CALL QP2TERM`
4. Start the installer by entering the following command:
`/qopt/WC55/setup.qsh`

Note: Enter the command only as shown. Entering the command by first navigating to the directory will cause the installation to fail.

5. For National Language versions only, select the installation language. The software will be installed in this language, regardless of the language settings of your system.

For the English language version, the selection panel does not appear; the installation language is English (en_US) by default.

6. The Welcome screen displays.
7. The Software Licensing Agreement displays.
8. Select **Custom Installation**.
9. Choose one or more of the component(s) you wish to install.
10. The destination directories for the selected components display.
11. The components you have selected will determine what information and prompts are displayed. Navigate through the remaining panels following any instructions that are provided and inserting the WebSphere Application Server CDs if requested.
12. When the installation is complete, the following message is posted:
The InstallShield Wizard has successfully installed IBM WebSphere Commerce.
13. Exit the Wizard and then exit the QP2TERM session by pressing **F3**.

Note: After you have completed the custom installation, you need to apply the WebSphere Application Server PTFs and any applicable OS/400 product PTFs. Refer to the WebSphere Commerce product README file for information on applying these PTFs. The latest version of the README is available from the WebSphere Commerce Technical Library Web site (<http://www.ibm.com/software/commerce/library/>).

After completing the custom installation, go to “Verifying a custom installation.”

Verifying a custom installation

To verify that your custom installation of WebSphere Commerce was successful, check the following:

1. The following libraries should exist on your @server iSeries system:
 - For WebSphere Commerce Server, WebSphere Commerce example files or WebSphere Commerce online help - library QWEBCOMM55
 - For WebSphere Commerce Payments - libraries QCPYMS and QCPYMS55
 - For WebSphere Application Server - library QEJBAS5
2. Depending on the components installed, the Integrated File System (IFS) on your @server iSeries system will have one or more of the following directories:
 - /QIBM/ProdData/CommerceServer55
 - /QIBM/ProdData/CommercePayments/V55
 - /QIBM/ProdData/WebAS5
3. Use iSeries Navigator to show what products have been installed on your @server iSeries system:
 - a. On a PC where iSeries Navigator can be accessed, click **Start** → **Programs** → **IBM iSeries Access for Windows** → **iSeries Navigator**
 - b. In the iSeries Navigator window, expand **Management Central** → **Endpoint Systems**
 - c. Right-click on the applicable iSeries system and click **Inventory** → **Collect**
 - d. A new window opens. Ensure that the Software box is checked. Click **OK** to start the collection
 - e. Expand **Management Central** → **Task Activity** → **Inventory**
 - f. In the right-hand panel, a task for your iSeries system should be listed. Press the **F5** key (refresh) until the Status shows 'Completed'
 - g. Click **Management Central** → **Endpoint Systems** → *iSeries system* → **Configuration and Service** → **Software Inventory** → **Installed Products**
 - h. The right-hand panel will show a listing of products. Scroll to the bottom to view the WebSphere Commerce products.

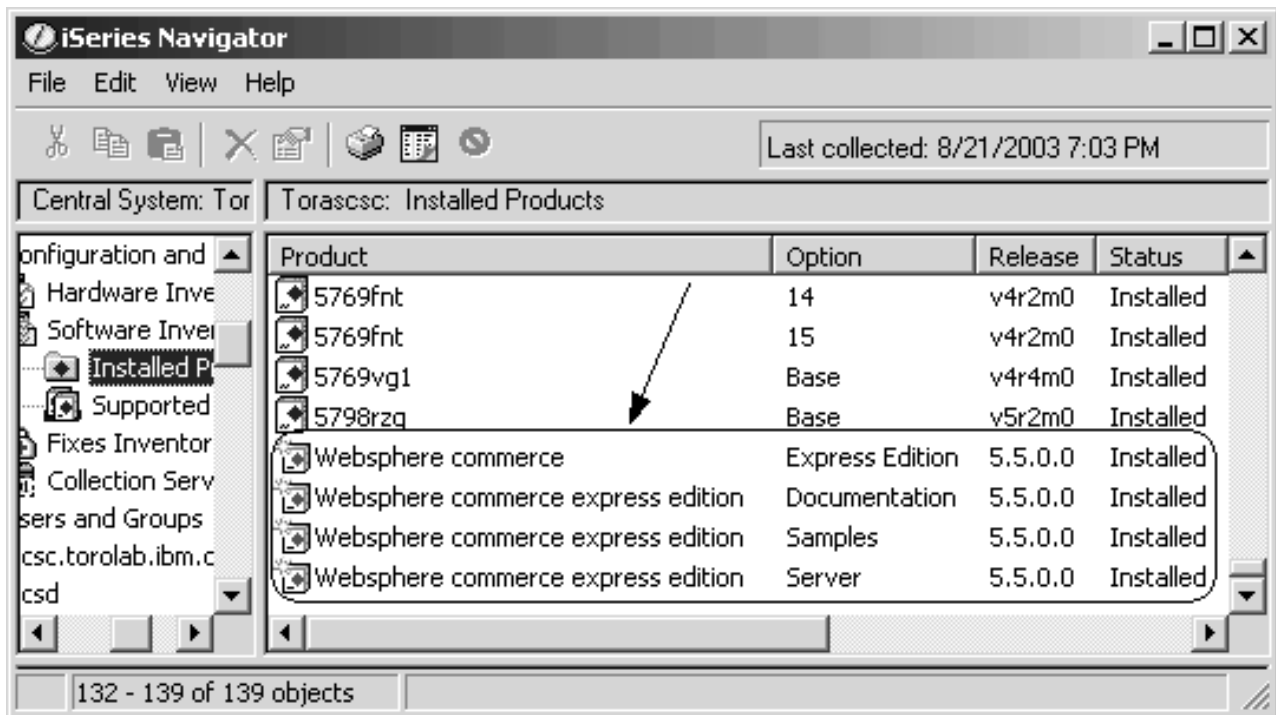


Figure 1. Products for a WebSphere Commerce Server installation

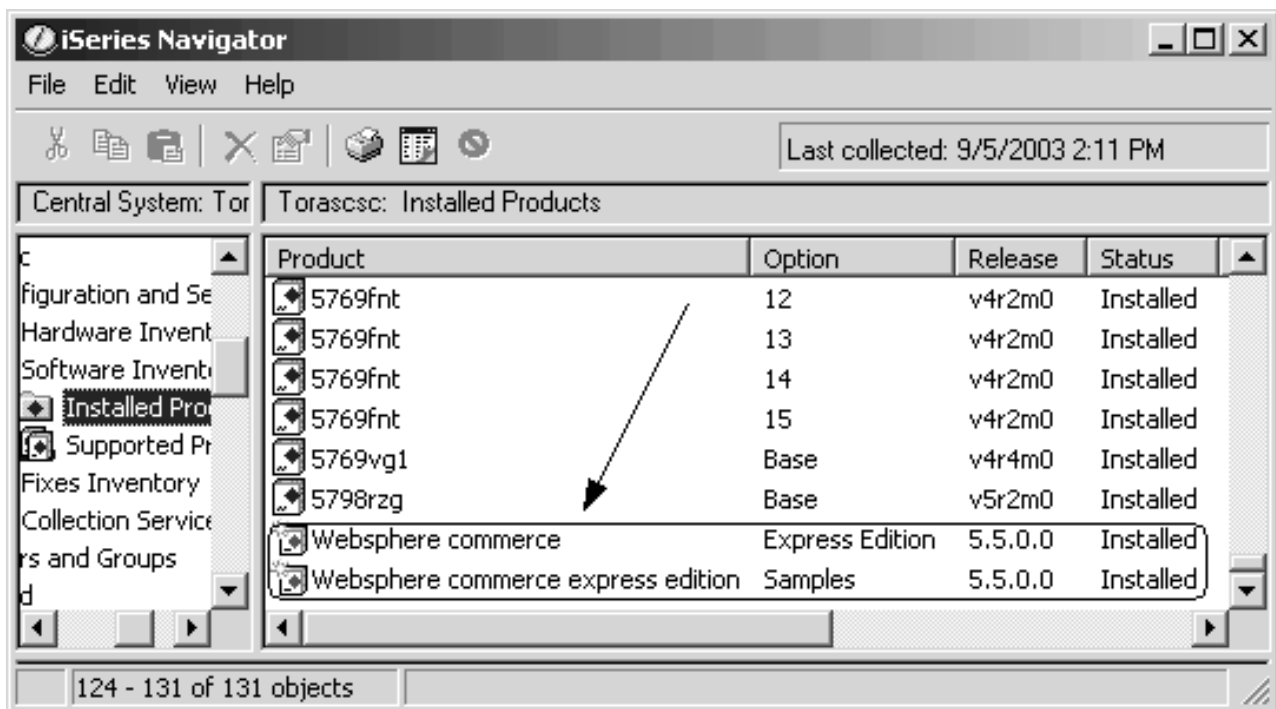


Figure 2. Products for a WebSphere Commerce example files installation

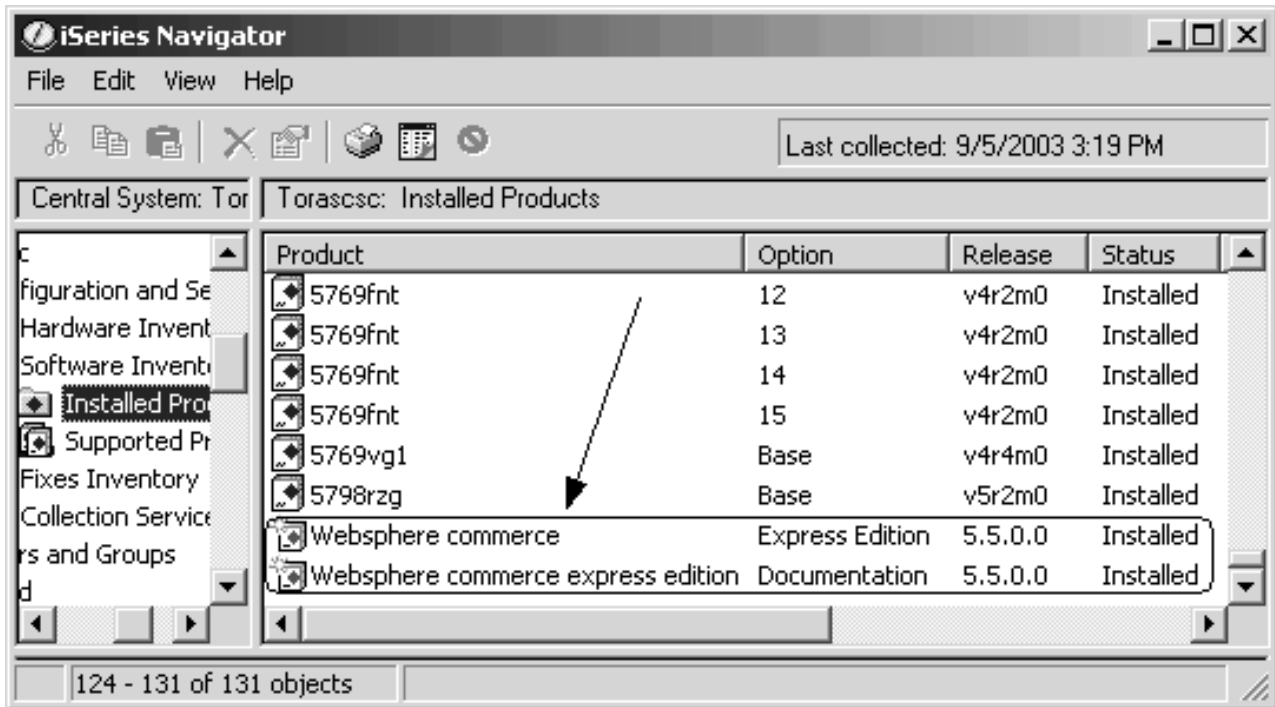


Figure 3. Products for a WebSphere Commerce online help installation

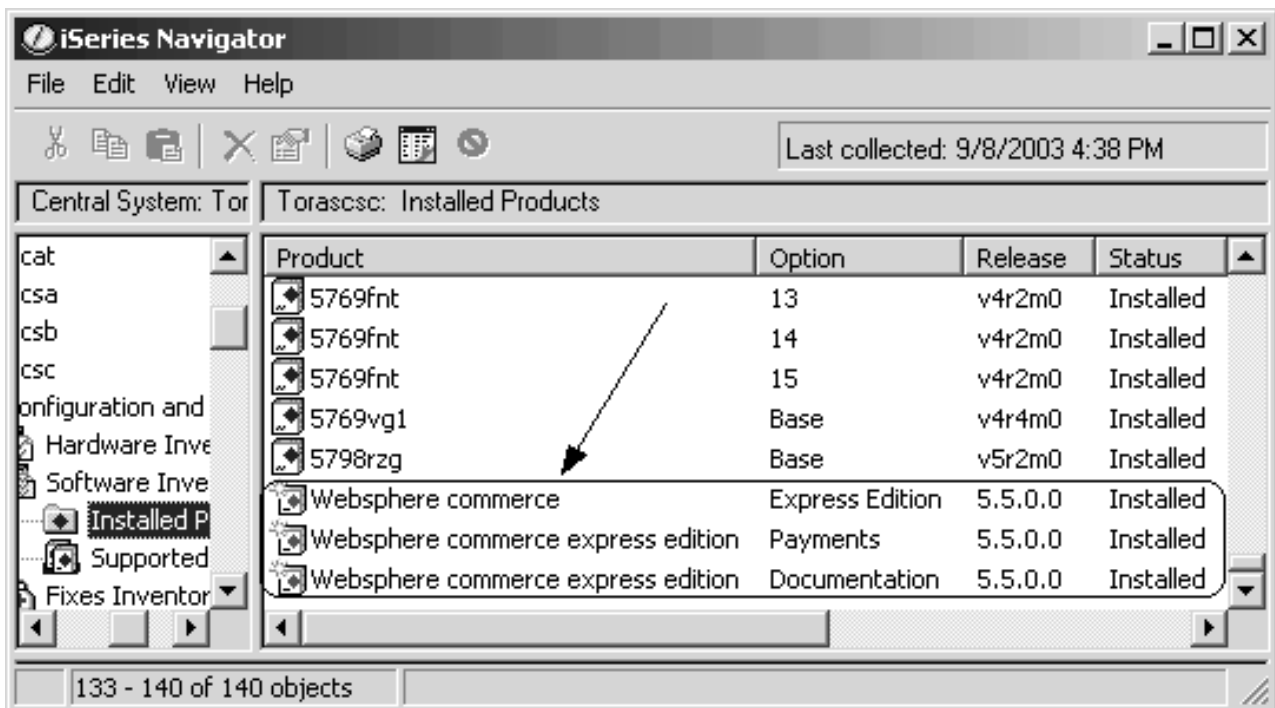


Figure 4. Products for a WebSphere Commerce Payments installation

Proceed to Chapter 7, "Verifying your installation," on page 31.

Chapter 7. Verifying your installation

The installation of WebSphere Commerce - Express creates an entry in the License Information table on your iSeries system.

Note: If during a custom installation, only the WebSphere Commerce example files or WebSphere Commerce online help or WebSphere Commerce Payments is installed, an entry will *not* be created in the License table. The WebSphere Commerce Server component must be installed in order for an entry to be created in the License table.

To change the information for the WebSphere Commerce - Express product, do the following:

1. From the iSeries command line, enter the following command
WRKLICINF
2. Scroll down to **Product 5724A18** and type a 2 in the **OPT** field.
3. In the **USGLMT** field, change the value to the number of processors for which you are licensed.
4. Press ENTER. Additional parameters will be shown.
5. Alter these additional parameters if necessary.
6. Press ENTER to accept the changes.

During the installation of WebSphere Commerce and its components, log files are generated. Examine the following log files to ensure that your installation was successful:

- "WebSphere Application Server installation log"
- "WebSphere Commerce installation log" on page 32

To confirm the installation of any non-IBM software, refer to the documentation provided with the non-IBM software package.

WebSphere Application Server installation log

The location of the WebSphere Application Server installation log file (WS5ISTDOUT.LOG) can be found in either of these directories:

- For a graphical install, the log file will be located on the Windows PC from where the install was completed. The log file will be located in the temporary folder of the PC user that was signed on when the installation was started. For example, on a Windows 2000 PC, the log file may be located in the following directory:

drive:/Documents and Settings/PC_user/Local Settings/Temp/WebSphere

- For a console install, the log file will be located on the iSeries system, in the following directory:

/tmp/WebSphere

The WebSphere Application Server installation is complete if the following message appears in the log file:

Installation completed successfully

WebSphere Commerce installation log

This log file contains messages generated by the WebSphere Commerce installation wizard. The default location for this log file is:

```
/InstallLogs/install_date_time.log
```

This log file will always reside on the iSeries system, even when installing remotely from a Windows system.

If the installation of WebSphere Commerce was successful, the following messages will appear at the end of the log file:

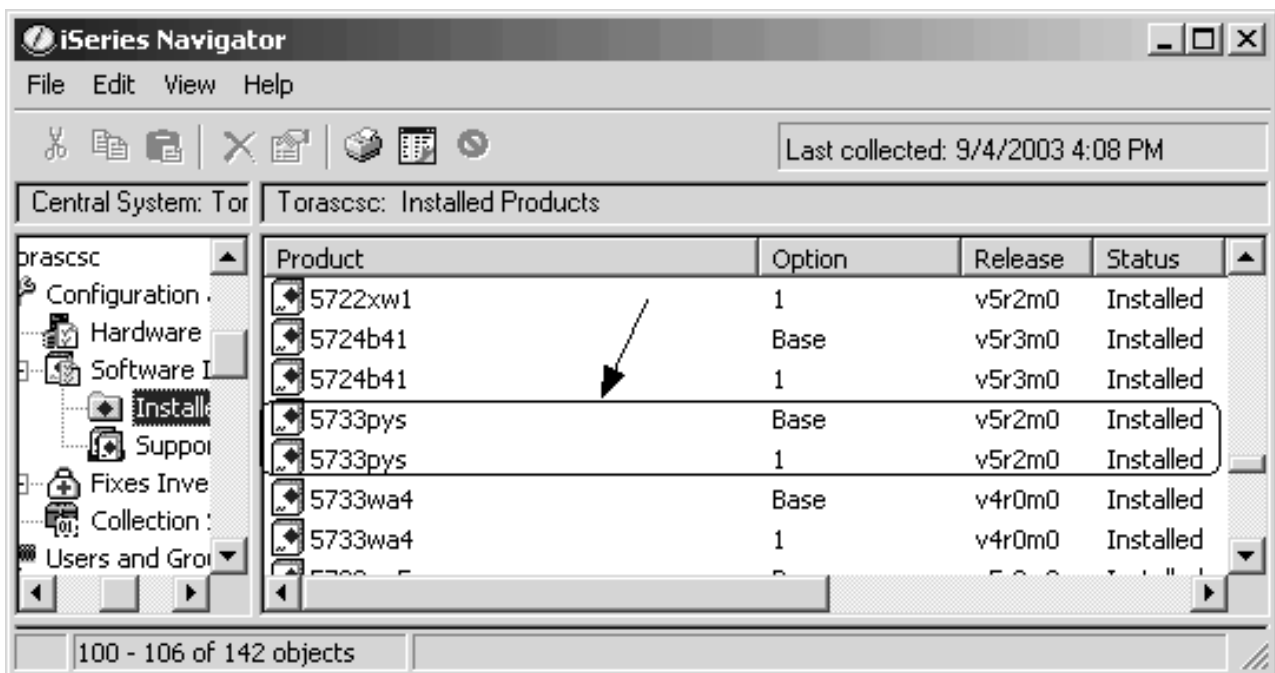
```
CMN7704S: IBM WebSphere Commerce Installer has successfully copied file from
\tmp\InstallShield\uninstall.qsh to
\qibm\ProdData\CommerceServer55\_uninst\uninstall.qsh
```

```
CMN7720S: IBM WebSphere Commerce Installer internal Generic Catch Warning caught:
COMMAND ENDED NORMALLY WITH EXIT STATUS 0.
/QIBM/ProdData/CommerceServer55/bin/iSeriesFileAuth.sh
```

This message is formatted to fit the page size of this book. The message may appear differently in your log file.

WebSphere Commerce Payments installation

If the WebSphere Commerce Payments component was chosen during a Custom Installation, the WebSphere Commerce Payments product will be installed on your iSeries system. You can use iSeries Navigator to see if this product has been installed. Refer to “Verifying a custom installation” on page 28 for information on accessing iSeries Navigator. The iSeries Navigator will show a screen similar to the one shown here:



The next step

After verifying your installation, continue by creating a WebSphere Commerce and WebSphere Commerce Payments instance by following the instructions in Part 3, “Creating a WebSphere Commerce and a WebSphere Commerce Payments instance,” on page 35.

Part 3. Creating a WebSphere Commerce and a WebSphere Commerce Payments instance

Once you have installed all the required software, you can create a WebSphere Commerce instance and a WebSphere Commerce Payments instance. These instances can be created through the Configuration Manager.

This section contains the following chapters:

- Chapter 8, “Before you create or modify an instance with Configuration Manager,” on page 37
- Chapter 9, “Creating a WebSphere Commerce instance,” on page 43
- Chapter 10, “Creating a WebSphere Commerce Payments instance,” on page 47

Chapter 8. Before you create or modify an instance with Configuration Manager

Before you start the Configuration Manager server or before you create or modify an instance with Configuration Manager, do the following:

1. Ensure that you have installed any fixes mentioned in the README file. For more information about the README file, refer to “Reviewing the README file” on page 8.
2. Ensure that you meet the prerequisites for starting Configuration Manager. The prerequisites are listed in “Configuration Manager prerequisites” on page 38.
3. Start the Configuration Manager by following the instructions in “Starting the Configuration Manager” on page 40.

Important

You should only modify the following Web server properties, as well as any Commerce-related properties, through the Configuration Manager GUI (and not through the Web server GUI nor the WebSphere Application Server Administrative Console):

- SSL (enabling or disabling)
- Web server instance name or port number
- SSL port number
- System IP address (Payments server host)

This will ensure that all configuration files, not just the Web server configuration files, are updated properly with the correct information.

Installing the Configuration Manager client

Before you create or modify a WebSphere Commerce instance with Configuration Manager, you will need to install the Configuration Manager Client on a Windows PC.

Note: Ensure that the Windows 2000 machine you will be using to install the Configuration Manager client code has Service Pack 3 installed.

Install the Configuration Manager client as follows:

1. Insert the WebSphere Commerce - Express CD 1 into the CD-ROM drive on your remote Windows system.

The WebSphere Commerce - Express LaunchPad starts. The **Install Product** option of the LaunchPad is used for Server installation only. Minimize or exit the LaunchPad.

2. Navigate to the CD-ROM drive and double click on `iSeriesClient.bat` to start the InstallShield Wizard.
3. Select the installation language, and click **OK**.

Note: The language selection is only available in the National Language version of WebSphere Commerce - Express and not available for the English version.

4. The Welcome screen is displayed; click **Next**.
5. Read the license agreement. If you accept the terms of the agreement, select that you accept the terms and click **Next**.
6. You can choose to select the default destination path (C:\Program Files\WebSphere\CommerceServer55) or select **Browse** for another destination path. Once you have selected your destination path, click **Next** to continue.
7. Confirm your installation choices, then select **Next**. (To modify your choices, select **Back**.)
8. The installation begins. A window indicating the percentage that has completed is shown in the bottom corner of the screen.
9. On the InstallShield Wizard panel, select **Next** to continue.
10. On the Installation Complete panel, select **Next**.
11. To complete the installation, your Windows system must be restarted. Click the appropriate button to either restart now or restart later and click **Finish**.

Note: The directory on the Windows PC where the Configuration Manager Client code is installed will be denoted by: *cfgmgr_installdir* in the remaining sections of this Guide.

Configuration Manager prerequisites

Before starting the WebSphere Commerce Configuration Manager, complete the following:

- Ensure the DDM server is running on your iSeries system. To start this server issue the following OS/400 command:

```
STRTCPSVR SERVER(*DDM)
```

Instance creation requirements using a remote database

If you are using a relational database other than *LOCAL, you will need to set up the database for remote access.

To configure your iSeries system to use a remote database, do the following:

1. Start the DDM TCP/IP server on the remote iSeries system using either of the following:
 - The **Network** option under your remote iSeries system in iSeries Navigator
 - The following OS/400 command:

```
STRTCPSVR SERVER(*DDM)
```

Note: To check if the DDM server job is running on your iSeries, check for job QRWTLSTN in subsystem QSYSWRK.

2. On the iSeries system where WebSphere Commerce - Express Version 5.5 is installed, use the WRKRDBDIRE command to ensure that there is an entry for the remote database where your instance's schema will be created.
3. On the iSeries system where WebSphere Commerce is installed, run the following command on one line:

```
RUNJVA CLASS(com.ibm.db2.jdbc.app.DB2PackageCreator)  
  PARM('database_name' 'user' 'password')
```

where *database_name* is the name of the database where the instance's schema will be created, *user* is a profile with authority to create new objects on the remote iSeries system, and *password* is the password associated with the user.

Note: The command opens up a Java Shell Display. The following message should be displayed after the command has completed: Java program completed

4. Create a user profile on the remote iSeries system. The user profile must have the same name as the instance name (*instance_name*) that you are creating. Configure the user profile so that its language settings match the language you intend to choose as the default language for your WebSphere Commerce instance.

The password for this user profile must be the same as on the *LOCAL system. This is the password that will be entered while configuring the Instance Logon Password field in the Configuration Manager.

For information in creating an iSeries user profile, refer to “Creating an iSeries user profile” on page 80.

5. Ensure that the instance user profile, you just created on the remote iSeries system, has authority to the *SQLPKG objects in library QGPL by running the following command on one line:

```
GRTOBJAUT OBJ(QGPL/*ALL) OBJTYPE(*SQLPKG) USER(instance_name)
AUT(*CHANGE)
```

During instance creation, it is recommended that **Use iSeries Toolbox driver** is selected in the WebSphere panel.

Modifying your iSeries user profile

Use the **DSPUSRPRF** command to determine the Home Directory (HOMEDIR) of your SECOFR user profile. Ensure that the HOMEDIR exists. If the HOMEDIR does not exist, create it using the OS/400 command: MKDIR.

The HOMEDIR must contain a file named SystemDefault.properties, tagged as 819 and containing ASCII data. This file must specify the file.encoding property that matches your user profile. The file.encoding property must be specified on one line, must contain no spaces, and is case sensitive. If this file already exists, use the **EDTF** command to set the file.encoding property to one of the following values:

- Japanese:
file.encoding=SJIS
- Korean:
file.encoding=KSC5601
- Simplified Chinese:
file.encoding=Cp1381
- Traditional Chinese:
file.encoding=Cp950
- All other languages:
file.encoding=ISO8859_1

If this file does not exist, you must copy it to your HOMEDIR using one of the commands below:

- Simplified Chinese:
COPY OBJ('/QIBM/ProdData/CommerceServer55/config/SystemDefault_CN.properties')
TOOBJ('home_directory/SystemDefault.properties')
TOCCSID(819)
- Korean:
COPY OBJ('/QIBM/ProdData/CommerceServer55/config/SystemDefault_KR.properties')
TOOBJ('home_directory/SystemDefault.properties')
TOCCSID(819)

- Traditional Chinese:

```
COPY OBJ('/QIBM/ProdData/CommerceServer55/config/SystemDefault_TW.properties')
TOOBJ('home_directory/SystemDefault.properties')
TOCCSID(819)
```
- Japanese:

```
COPY OBJ('/QIBM/ProdData/CommerceServer55/config/SystemDefault_JP.properties')
TOOBJ('home_directory/SystemDefault.properties')
TOCCSID(819)
```
- All other languages:

```
COPY OBJ('/QIBM/ProdData/CommerceServer55/config/SystemDefault.properties')
TOOBJ('home_directory/SystemDefault.properties')
TOCCSID(819)
```

Once the new file is created, ensure that it contains the proper ASCII data.

Starting the Configuration Manager

To start the WebSphere Commerce Configuration Manager on iSeries, do the following:

1. Start the Configuration Manager server by doing the following:
 - a. Log on to the iSeries ensuring that the profile has a *SECOFR user class, and is set up with the language specific settings of either English, or the language that you will choose as the default language for your instance.
 - b. Start a QShell session by entering the following command:

```
STRQSH
```

and do the following in the QShell session:

- 1) Switch to the WebSphere Commerce server bin directory by issuing the following command:

```
cd WC_installdir/bin
```

Default values for *WC_installdir* are listed in “Path variables” on page iv.

- 2) Start the configuration manager server program by issuing the following command:

```
config_server.sh [-port server_port_number]
```

The port *server_port_number* parameter is optional. If you do not specify this parameter, the default port of 1099 is used. The Configuration Manager server will listen using this port number. If you specify the *server_port_number*, the value must be between 1024 and 65535 and not currently in use on the iSeries system.

Note: If you are using a system where your primary language is not the same as the language in which you are creating your instance, then you must add the *QSYSlanguage_feature_number* library into your user profile’s library list. Otherwise the profile will try to locate it under QSYS. To add the language feature library, use the EDTLIBL command.

- c. If this is the first time that Configuration Manager is run on the system, you will see the following messages:


```

Attaching Java program to /QIBM/ProdData/CommerceServer55/lib/ConfigManager.JAR.
Attaching Java program to /QIBM/ProdData/CommercePayments/V55/wc.mpf.ear/lib/ibmjisse.JAR.
Attaching Java program to /QIBM/ProdData/CommerceServer55/lib/Utilities.JAR.
Attaching Java program to /QIBM/ProdData/CommerceServer55/lib/Enablement-BaseComponentsLogic.JAR.
Attaching Java program to /QIBM/ProdData/CommerceServer55/lib/jtopen.JAR.
Attaching Java program to /QIBM/ProdData/CommerceServer55/lib/xerces.JAR.
Attaching Java program to /QIBM/ProdData/CommerceServer55/lib/sslite.ZIP.

```

d. When the following messages are posted:

```

Registry created.
CMServer bound in registry.

```

proceed to the next step.

2. Start the Configuration Manager client on the Windows machine where the Configuration Manager client code was installed.

Note: Ensure that the Windows machine has been restarted after the installation of the Configuration Manager client code.

- a. Using a command prompt on the Configuration Manager client machine, change to the *cfgmgr_installdir/bin* directory.
- b. Start the Configuration Manager client by running the following command:

```
configClient.bat -hostname iSeries_Host_name [-port server_port_number]
```

where

iSeries_Host_name

Is the fully qualified host name of the server (ensure the entire name is specified in capital letters).

server_port_number

Is the port number on the iSeries server on which the Configuration Manager is listening. You only need to specify this value if the server is listening on a non-default port. The port parameter is optional, but if it was specified in the *config_server.sh* command, it needs to be specified here

- c. Log in to Configuration Manager. The initial ID is **webadmin** and the initial password is **webibm**. If this is the first time you are logging in to Configuration Manager, you will be asked to change the password for security purposes.
- d. Once your password has been accepted, the Configuration Manager window opens.
- e. Proceed to “The next step” on page 42.

Stopping the Configuration Manager

To end Configuration Manager, do the following:

1. In the Configuration Manager GUI, click on **Console** and **Exit**.
2. Click **OK** when the message ‘For Security reasons, the Config Manager Server will now be stopped.’ is posted.
3. Exit from the DOS window where the Configuration Manager client was started.
4. Exit from the QSHHELL session, on your iSeries system, where the Configuration Manager server was started.

The next step

Continue with the following sections:

- Chapter 9, “Creating a WebSphere Commerce instance,” on page 43.
- Chapter 10, “Creating a WebSphere Commerce Payments instance,” on page 47.

Chapter 9. Creating a WebSphere Commerce instance

This chapter describes how to create a WebSphere Commerce instance. For information on modifying a WebSphere Commerce instance, refer to “Modifying a WebSphere Commerce or WebSphere Commerce Payments instance” on page 59.

Considerations when creating a WebSphere Commerce instance

IBM recommends that you create WebSphere Commerce instances within the default WebSphere Application Server instance. When you create a WebSphere Commerce instance, always specify the fully-qualified host name in the appropriate Configuration Manager panels.

You can choose to create WebSphere Commerce instances in non-default WebSphere Application Server instances. Creating such instances may introduce port conflicts that will prevent your WebSphere Commerce instance from starting. An example of a message for a problem with starting a WebSphere Commerce instance is as follows:

EJB6121: Application server did not start.

If you experience any problems when you attempt to start your WebSphere Commerce instance, regardless of whether your instance is using a default or non-default WebSphere Application Server instance, refer to the items found in Appendix A, “Known problems and limitations,” on page 85

You can create more than one WebSphere Commerce instance when the Configuration Manager GUI is open, as long as they are created under the same WebSphere Application Server instance. Before creating a WebSphere Commerce instance under a different WebSphere Application Server instance, you need to stop and then restart the Configuration Manager.

Note: Although the Configuration Manager client code can be installed on more than one Windows PC, creating a WebSphere Commerce instance or WebSphere Commerce Payments instance must be limited to one PC at any given time. Attempting to create instances from two or more PCs at the same time is not supported.

Creating a new WebSphere Commerce instance

To create a new WebSphere Commerce instance, do the following:

1. Start the WebSphere Commerce Configuration Manager. For details, refer to “Starting the Configuration Manager” on page 40.
2. Under **WebSphere Commerce**, expand your *hostname*.
3. Expand **Commerce**.
4. Right-click on **Instance List**.
5. From the resulting pop-up menu, select **Create Instance**. The Instance Creation wizard starts.

6. Complete the Instance Creation wizard.



For help on completing the panels and fields in the instance creation wizard, click **Help** on the Instance creation wizard. A **Help** button is available on each panel of the wizard. The help panels apply to all supported WebSphere Commerce platforms. Ensure you follow the iSeries specific help denoted with the following icon:

400

7. When you have completed the necessary information in the panels, the **Finish** button is enabled. Click **Finish** to create the WebSphere Commerce instance.

The time required to create an instance depends on the speed of your system. The progress bar that displays when you start creating the instance will indicate when the process has finished.

8. When instance creation is complete, a dialog box appears containing a summary. Click **OK** to close the dialog box.
9. Other dialog boxes may display containing additional instructions, ensure that you review the contents of the dialog boxes before dismissing them.
10. Exit Configuration Manager by clicking on **Console** and **Exit**.
11. The following message is displayed: For security reasons, the Config Manager Server will now be stopped. Click **OK** to close Configuration Manager.
12. Exit from the DOS window where the Configuration Manager client was started.
13. Exit from the QShell session, on your iSeries system, where the Configuration Manager server was started.

You can now verify the creation of the WebSphere Commerce instance by following the instructions in "Verifying the instance creation."

Verifying the instance creation

The configuration information for the new WebSphere Commerce instance is stored in the following file:

```
WC_userdir/instances/instance_name/xml/instance_name.xml
```

where default values for *WC_userdir* are listed in "Path variables" on page iv and *instance_name* is the name of WebSphere Commerce instance.

Confirm that this file exists before checking the log files produced during instance creation.

Creating a WebSphere Commerce instance produces the following log files:

- Auction.log
- createdb.log
- createdb.production.log
- GenPluginCfg.log
- messages.txt
- populatedb.err.log
- populatedb.log
- populatedb2.err.log

- populatedb2.log
- populatedbnl.err.log
- populatedbnl.log
- RESWCSID.txt
- Schema.log
- trace.txt
- WASConfig.log
- WASConfig.err.log

The files are located in the following directory:

WC_userdir/instances/instance_name/logs

where default values for *WC_installdir* are listed in “Path variables” on page iv and *instance_name* is the name of WebSphere Commerce instance.

The database population part of instance creation is successful if the following logs are empty:

- populatedb.err.log
- populatedb2.err.log
- populatedbnl.err.log
- WASConfig.err.log

Also, review the contents of the following logs to confirm they do not contain any errors:

- createdb.log
- messages.txt

Completing the configuration of a remote database

If your instance has been configured to use a remote database, you must complete additional configuration. Change the instance user profile on the remote machine so that the instance library is set to the current library. To complete these changes, run the following command:

```
CHGUSRPRF USRPRF(instance_name) CURLIB(instance_name)
```

where *instance_name* is the name of the WebSphere Commerce instance.

Setting the time zone

After you have created your WebSphere Commerce instance, you need to set the time zone for your WebSphere Commerce instance.

To ensure that the appropriate time zone is written in your trace files, set the `user.timezone` property. The property has the following syntax:

```
user.timezone=time_zone
```

where *time_zone* is the code for your time zone (for example, CST for Central Standard Time; for other *time_zone* values, refer to the Web Site shown below, at the end of this section).

Edit the `SystemDefault.properties` file that is located in the *instance_root/home* directory. By default, *instance_root* refers to *WC_userdir/instances/instance_name*, where *WC_userdir* is defined in “Path variables” on page iv and *instance_name* is

the name you provide for your instance during configuration. Specifying the time zone property in this way only affects WebSphere Application Server. For additional information, refer to the topic "Setting the time zone" in the WebSphere Application Server for iSeries Information Center at the following Web site:

<http://publib.boulder.ibm.com/series/v1r1m0/websphere/ic2924/index.htm?info/rzaiz/50/trb/trctimez.htm>

Note that the above line has been split across two lines for display purposes.

The next step

After you have configured your WebSphere Commerce instance, you can continue by creating a WebSphere Commerce Payments instance. Instructions for creating a WebSphere Commerce Payments are provided in Chapter 10, "Creating a WebSphere Commerce Payments instance," on page 47. WebSphere Commerce Payments is an optional component and not required to publish or run your store.

If you plan to publish the FashionFlow sample store in WebSphere Commerce - Express, you must install WebSphere Commerce Payments. For more information on the FashionFlow sample store, refer to *WebSphere Commerce Sample Store Guide*.

WebSphere Commerce Payments is not required to publish the ExpressStore.sar store archive file. For more information on the Express store, refer to *WebSphere Commerce - Express Easy Start Guide*.

Chapter 10. Creating a WebSphere Commerce Payments instance

This chapter describes how to create a WebSphere Commerce Payments instance. For information on modifying a WebSphere Commerce Payments instance, refer to “Modifying a WebSphere Commerce or WebSphere Commerce Payments instance” on page 59.

WebSphere Commerce Payments is an optional component of WebSphere Commerce - Express. It is not required to publish the ExpressStore.sar store archive file, however it is required if you plan to publish the FashionFlow sample store.

Refer to the WebSphere Commerce Payments cassette supplements for more information about using a particular WebSphere Commerce Payments cassette. To use a WebSphere Commerce Payments cassette with a WebSphere Commerce sample store, refer to *WebSphere Commerce Store Development Guide*.

Note: You should only change WebSphere Commerce Payments ports through the WebSphere Commerce Configuration Manager, as stated in Chapter 8, “Before you create or modify an instance with Configuration Manager,” on page 37 and not through the WebSphere Application Server Administrative Console. This ensures that all properties and files are updated with the same information.

Considerations when creating a WebSphere Commerce Payments instance

IBM recommends that you create WebSphere Commerce Payments instances within the default WebSphere Application Server instance. When you create a WebSphere Commerce Payments instance, always specify the fully-qualified host name in the appropriate Configuration Manager panels.

You can choose to create WebSphere Commerce Payments instances in non-default WebSphere Application Server instances. Creating such instances may introduce port conflicts that will prevent your WebSphere Commerce Payments instance from starting. An example of a message for a problem with starting a WebSphere Commerce Payments instance is as follows:

```
EJB6121: Application server did not start.
```

If you experience any problems when you attempt to start your WebSphere Commerce Payments instance, regardless of whether your instance is using a default or non-default WebSphere Application Server instance, refer to the items found in Appendix A, “Known problems and limitations,” on page 85.

To change WebSphere Commerce Payments ports, do the following:

1. Start WebSphere Commerce Configuration Manager. For instructions, refer to “Starting the Configuration Manager” on page 40.
2. Under **WebSphere Commerce**, expand your *hostname*.
3. Expand **Payments** → **Instance List** → *payments_instance_name* → **Instance Properties**.
4. Click on the **Webserver** tab.

5. Update the desired ports.
6. Click **Apply** to apply your changes.

Note: All Payments ports should be changed through the Configuration Manager, as stated in Chapter 8, “Before you create or modify an instance with Configuration Manager,” on page 37 and not through the WebSphere Application Server Administration Console. This ensures that all properties and files are updated with the same information.

You can create more than one WebSphere Commerce Payments instance when the WebSphere Commerce Configuration Manager is open, as long as they are created under the same WebSphere Application Server instance. Before creating a WebSphere Commerce Payments instance under a different WebSphere Application Server instance, you need to stop and then restart the Configuration Manager.

Note: Although the WebSphere Commerce Configuration Manager client can be installed on more than one Windows system, creating a WebSphere Commerce instance or WebSphere Commerce Payments instance must be limited to one PC at any given time. Attempting to create instances from two or more systems at the same time is not supported.

Creating a new WebSphere Commerce Payments instance

To create a new WebSphere Commerce Payments instance, do the following:

1. Start the WebSphere Commerce Configuration Manager. For details, see “Starting the Configuration Manager” on page 40.

In cases where WebSphere Commerce Payments is on a separate node from WebSphere Commerce, ensure that the Configuration Manager server on the WebSphere Commerce Payments node is started.

2. Under **WebSphere Commerce** expand your *hostname*
3. Expand **Payments**.
4. Right-click on **Instance List**.
5. From the resulting pop-up menu, select **Create Payments Instance**. The Payments Instance Creation wizard starts.
6. Complete the Payments instance creation wizard information.



For help on completing the panels and fields in the Payments instance creation wizard, click **Help** on the instance creation wizard. A **Help** button is available on each panel of the wizard. The Help panels apply to all supported WebSphere Commerce platforms. Ensure you follow the iSeries specific help denoted with the following icon:

400

Important: When completing the WebSphere Commerce Payments instance creation wizard, ensure that the value you enter in the **Site Admin ID** field is the WebSphere Commerce Site Administrator ID. The WebSphere Commerce Site Administrator ID was created when you created the WebSphere Commerce instance and it was the value entered in the **Site Admin ID** field of the WebSphere Commerce instance creation wizard.

7. When you have completed all the necessary information in all the panels, the **Finish** button is enabled. Click **Finish** to create the WebSphere Commerce Payments instance.

The time required to create an instance depends on the speed of your system. The progress bar that displays when you start creating the instance will indicate when the process has finished.

8. When instance creation is complete, a dialog appears containing a summary. Click **OK** to close the dialog window.
9. Exit Configuration Manager by clicking on **Console** and **Exit**.
10. Click **OK** when the message 'For Security reasons, the Config Manager Server will now be stopped.' is posted.
11. Exit from the DOS window where the Configuration Manager client was started.
12. Exit from the QShell session on your iSeries system where the Configuration Manager server was started.

You can now verify the creation of the WebSphere Commerce Payments instance by following the instructions in "Verifying the instance creation."

Verifying the instance creation

The configuration information for the new WebSphere Commerce Payments instance is stored in the following file:

```
WC_userdir/instances/payments_instance_name/xml/  
payments_instance_name.xml
```

where default values for *WC_userdir* are listed in "Path variables" on page iv and *payments_instance_name* is the name of WebSphere Commerce Payments instance.

Confirm that this file exists before checking the log files produced during instance creation.

Creating a WebSphere Commerce Payments instance produces the *Configurator.1.log* file in the *WC_userdir/instances* directory where default value for *WC_userdir* is listed in "Path variables" on page iv.

Check the *Configurator.1.log* file for any errors.

The next step

After you have configured your WebSphere Commerce Payments instance, you can continue by following the instructions in Part 4, "Last steps," on page 51.

If you are using a remote Web server, you must follow the instructions in Chapter 11, "Mandatory post-instance creation tasks," on page 53.

Part 4. Last steps

This section outlines the mandatory tasks you must perform after creating a WebSphere Commerce and WebSphere Commerce Payments instance.

After completing the tasks in this section, you are ready get your store up and running by following the instructions in *WebSphere Commerce - Express Easy Start Guide*.

Chapter 11. Mandatory post-instance creation tasks

Depending on your WebSphere Commerce - Express topography, perform the tasks in one of the following sections after creating WebSphere Commerce and WebSphere Commerce Payments instances:

- “Web server post-creation tasks”
- “Local Web server post-instance creation tasks”
- “Remote Web server post-instance creation tasks”

Web server post-creation tasks

Review the *WebSphere Commerce Security Guide* for information on enabling Secure Sockets Layer (SSL) for your WebSphere Commerce instance HTTP server. Without enabling SSL, your WebSphere Commerce instance will not start properly.

You must assign a certificate to your HTTP server in Digital Certificate Manager (DCM) on the iSeries. Without assigning a certificate, your WebSphere Commerce instance will not operate properly. For information refer to the iSeries Information Center (<http://publib.boulder.ibm.com/html/as400/infocenter.html>). Once you are at the site, select your operating system version and your language. Search for the topic “Manage public Internet certificates for SSL communication sessions”

Local Web server post-instance creation tasks

If the Web server is installed on the same node as WebSphere Commerce and WebSphere Commerce Payments you must stop and restart the Web server after creating WebSphere Commerce and WebSphere Commerce Payments instances.

Remote Web server post-instance creation tasks

If the Web server is installed on a different node from WebSphere Commerce and WebSphere Commerce Payments, do the following after creating a WebSphere Commerce or a WebSphere Commerce Payments instance:

1. Copy the `plugin-cfg.xml` from the WebSphere Commerce node to the Web server node. For instructions, refer to “Copying the `plugin-cfg.xml` file to Web server” on page 67.
2. If WebSphere Commerce and WebSphere Commerce Payments are installed on different nodes, merge the contents of the `plugin-cfg.xml` file on the WebSphere Commerce Payments node with the `plugin-cfg.xml` on the Web server node. For instructions, refer to “Merging the WebSphere Commerce Payments `plugin-cfg.xml` file” on page 67.
3. If it does not exist, create a directory on the Web server node that matches the `WAS_installdir` directory on the WebSphere Commerce node.
4. Copy the following directory from the WebSphere Commerce node to the Web server node:

```
WAS_userdir/installedApps/cell_name/WC_instance_name.ear
```

where the variables are defined as follows:

WAS_userdir

Default values for this variables are listed in “Path variables” on page iv

cell_name

This is the short host name of the machine on which WebSphere Commerce and WebSphere Commerce Payments are installed.

instance_name

This is the name of the WebSphere Commerce instance.

Ensure that the full paths on the Web server node and the WebSphere Commerce node are the same. You may need to create the directories that make up this path on the Web server node.

Important

It is recommended that you remove any JSP and JAR files from the *WC_instance_name.ear* directory on the Web server. Only static-content files should be in the *WC_instance_name.ear* directory on the Web server.

5. Ensure that the path for the WebSphere Application Server plug-in is shown correctly in the `httpd.conf` file on the Web server node.
To check the path, open the `httpd.conf` file in a text editor and search for the following:

```
WebSpherePluginConfig
```

This entry should contain the full path to the `plugin-cfg.xml` file on the Web server node. If the path is incorrect, change the path, save the `httpd.conf` file, and restart the Web server.

6. Stop and restart the Web server.

Part 5. Installation and administration tasks

This sections contains instructions for various tasks you must perform during the installation and administration of WebSphere Commerce.

Chapter 12. WebSphere Commerce tasks

This section provides instructions for WebSphere Commerce tasks you may need to complete while installing and administering WebSphere Commerce.

Starting or stopping a WebSphere Commerce instance

To start or stop a WebSphere Commerce instance, do the following:

1. Ensure that the Web server is started.
2. Start, stop, or restart the application server for the WebSphere Commerce instance you want to start. Instructions for starting and stopping an application server are provided in “Starting or stopping an application server” on page 63.

Note: The first time you start an instance, it will take a long time to start. This delay results from the caching of information about Java programs. While the delay can be lengthy, it improves the start-up time in subsequent attempts.

The following sections describe how you start and stop a WebSphere Commerce instance from a command line on iSeries.

Starting the WebSphere Commerce instance

Your user profile must have *JOBCTL authority to start a WebSphere Commerce instance.

To start a WebSphere Commerce instance on OS/400, do the following:

1. Ensure the WebSphere Application Server subsystem is started by doing the following:
 - a. Start an OS/400 command session.
 - b. Issue the following command:
WRKSBS
 - c. Ensure that the following subsystem appears in the list of running subsystems:
QEJBAS5

If the QEJBAS5 subsystem does not appear in the list of running subsystems, you must start the subsystem before starting a WebSphere Commerce instance. For instructions on starting the QEJBAS5 subsystem, refer to “Starting the QEJBAS5 subsystem” on page 65.

2. Start a QShell session by entering the following command:
STRQSH

and enter the following in the QShell session if you want to start the WebSphere Commerce instance in the default WebSphere Application Server application server:

```
WAS_installdir/bin/startServer WC_instance_name  
[-instance WAS_instance_name]
```

The `-instance WAS_instance_name` parameter is optional for the command.

For example, to start the demo1 WebSphere Commerce instance in the default WebSphere Application Server application server:

```
WAS_installdir/bin/startServer WC_demo1
```

For example, to start the server1 instance in the default WebSphere Application Server application server:

```
WAS_installdir/bin/startServer server1
```

(Note that server1 is automatically started when the QEJBAS5 subsystem is started.)

For example, to start the demo2 WebSphere Commerce instance in the demo2was WebSphere Application Server application server:

```
WAS_installdir/bin/startServer WC_demo2 -instance demo2was
```

Stopping the WebSphere Commerce instance

Your user profile must have *JOBCTL authority to stop a WebSphere Commerce instance.

To stop a WebSphere Commerce instance on OS/400, do the following:

1. Start a QShell session by entering the following command:

```
STRQSH
```

2. The following examples show you how to stop the WebSphere Commerce instance using the WebSphere Application Server stopServer command in the Qshell session:

- If you want to stop the WebSphere Commerce instance in the default WebSphere Application Server instance, enter the following:

```
WAS_installdir/bin/stopServer WC_instance_name [-instance WAS_instance_name]
```

The `-instance WAS_instance_name` parameter is optional for the command.

- This example stops the demo1 WebSphere Commerce instance in the default WebSphere Application Server.

```
WAS_installdir/bin/stopServer WC_demo1
```

- This example stops the server1 instance in the default WebSphere Application Server.

```
WAS_installdir/bin/stopServer server1
```

- This example stops the demo2 WebSphere Commerce instance in the demo2was WebSphere Application Server application server:

```
WAS_installdir/bin/stopServer WC_demo2 -instance demo2was
```

Starting or stopping a WebSphere Commerce Payments instance

To start or stop a WebSphere Commerce Payments instance, do the following:

1. Ensure that the Payments Web server is started.
2. Start Configuration Manager. For instructions on starting Configuration Manager, refer to “Starting the Configuration Manager” on page 40.
3. In Configuration Manager, under **WebSphere Commerce**, expand *hostname* → **Payments** → **Instance List**.
4. Right-click the name of the WebSphere Commerce Payments instance you want to start or stop and do one of the following:

- To start the WebSphere Commerce Payments instance, select **Start Payments Instance** from the pop-up menu. After receiving the Instance started successfully dialog, click **OK** to dismiss the dialog.
- To stop the WebSphere Commerce Payments instance, select **Stop Payments Instance** from the pop-up menu.

Note: The first time you start an instance, it will take a long time to start. This delay results from the caching of information about Java programs. While the delay can be lengthy, it improves the start-up time in subsequent attempts.

Starting or stopping a WebSphere Commerce Payments instance from QShell session

The following are two alternate methods to start or stop a WebSphere Commerce Payments instance. In either method, ensure that the WebSphere Commerce Payments Web server is started before you start a WebSphere Commerce Payments instance.

If the password will not be provided

In this case, *Unattended Restart* has been set on and a password is not required. To start the instance:

1. From a QShell session, traverse to the *WAS_installdir/bin* directory.
2. Run the following command:

```
startServer payments_instance_name_Commerce_Payments_Server
-instance WAS_instance_name
```

To stop the instance:

1. From a QShell session, traverse to the *WAS_installdir/bin* directory.
2. Run the following command:

```
stopServer payments_instance_name_Commerce_Payments_Server
-instance WAS_instance_name
```

If the password will be provided

In this case, *Unattended Restart* has been set off and a password is required. To start the instance:

1. From a QShell session, traverse to the *Payments_installdir/bin* directory.
2. Run the following command:

```
IBMPayServer payments_instance_name password
```

where *payments_instance* is the Payments instance name and *password* is the corresponding Payments instance password.

To stop the instance:

1. From QSH, traverse to the *Payments_installdir/bin* directory.
2. Run the following command:

```
StopIBMPayServer payments_instance_name password
```

Modifying a WebSphere Commerce or WebSphere Commerce Payments instance

If you want to change any of the configuration settings for your WebSphere Commerce instance, you can do so from the Configuration Manager.

To update a WebSphere Commerce instance using the Configuration Manager, do the following:

1. Start Configuration Manager. For instructions on starting Configuration Manager, refer to “Starting the Configuration Manager” on page 40.
2. From the list of instances, select the instance you want to configure and select the node for which you want to alter the settings. Refer to the online help for the Configuration Manager for information about the various fields and panels of Configuration Manager.
3. After you update your instance, click **Apply** to apply your changes.
4. When the changes have been successfully applied, exit the Configuration Manager client. This also terminates the Configuration Manager server.
5. Restart the instance you have modified.

Deleting a WebSphere Commerce instance

To delete a WebSphere Commerce instance, do the following:

1. Ensure that WebSphere Commerce is stopped. For instructions on stopping WebSphere Commerce, refer to “Starting or stopping a WebSphere Commerce instance” on page 57.
2. Delete the WebSphere Commerce application server by issuing the following command from a QShell session:

```
WC_installdir/bin/rmCommerceServer.sh instance_name
```

where *instance_name* is the name of the WebSphere Commerce instance you want to delete.

Default values for *WC_installdir* are listed in “Path variables” on page iv.

Important

Ensure that you enter the name of the WebSphere Commerce instance and *not* the name of the WebSphere Commerce application server.

When the name of the WebSphere Commerce instance is *instance_name*, the name of the WebSphere Commerce application server is **WC_***instance_name*.

If you use *WC_instance_name*, you will receive an error message.

3. Delete the WebSphere Commerce instance from Configuration Manager by doing the following:
 - a. Start Configuration Manager. For instructions on starting Configuration Manager, refer to “Starting the Configuration Manager” on page 40.
 - b. In Configuration Manager, under **WebSphere Commerce**, expand *hostname* → **Commerce** → **Instance List**.
 - c. Right-click the instance you want to delete and select **Delete instance**.
 - d. Exit Configuration Manager when the process completes.
4. Drop the WebSphere Commerce schema associated with the WebSphere Commerce instance you want to delete.

If schema data will be required for other purposes, go to the next step.

To drop the WebSphere Commerce schema, issue the following command from a QShell session:

```
db2 "drop schema instance_name"
```

where *instance_name* is the name of the WebSphere Commerce instance.

Note: From another OS/400 session, monitor for any messages that may be posted for the QShell session. The OS/400 command WRKSBSJOB QINTER can be used.

5. Delete the following directories:

```
WC_userdir/instances/instance_name
WAS_userdir/logs/WC_instance_name
WAS_userdir/config/temp/cells/cell_name/applications/WC_instance_name.ear
WAS_userdir/config/temp/cells/cell_name/nodes/node_name/servers/
    WC_instance_name
WAS_userdir/temp/cell_name/WC_instance_name
WAS_userdir/tranlog/WC_instance_name
```

where *instance_name* is the name of the WebSphere Commerce instance you want to delete.

6. Delete the HTTP entry in the QATMHINSTC file in QUSRSYS library. The entry will be of the form *instance_name*, where *instance_name* is the name of the WebSphere Commerce instance you want to delete.
7. Delete the user profile associated with the instance using the following OS/400 command:

```
DLTUSRPRF USRPRF(instance_name) OWNNOBJOPT(*DLT)
```

Where *instance_name* is the name of the WebSphere Commerce instance you want to delete.

8. If you plan to use other WebSphere Application Server application servers after deleting the WebSphere Commerce instance, you must regenerate the WebSphere Application Server plug-in configuration file. For information on regenerating the WebSphere Application Server plug-in configuration file, refer to “Regenerating the WebSphere Application Server Web server plug-in configuration file” on page 65.

Deleting a WebSphere Commerce Payments instance

To delete a WebSphere Commerce Payments instance, do the following:

1. Ensure that WebSphere Commerce Payments is stopped. For instructions, refer to “Starting or stopping a WebSphere Commerce Payments instance” on page 58.
2. Delete the WebSphere Commerce Payments instance from Configuration Manager by doing the following:
 - a. Start Configuration Manager. For instructions on starting Configuration Manager, refer to “Starting the Configuration Manager” on page 40.
 - b. In Configuration Manager, under **WebSphere Commerce** expand *hostname* → **Payments** → **Instance List**.
 - c. Right-click the instance you want to delete and select **Delete Payments Instance**.
 - d. Exit Configuration Manager when the process completes.

This step also deletes the WebSphere Commerce Payments application server.

- Drop the WebSphere Commerce Payments schema associated with the WebSphere Commerce Payments instance you want to delete. To drop the WebSphere Commerce Payments schema, issue the following command from a QShell session:

```
db2 "drop schema payments_instance_name"
```

where *payments_instance_name* is the name of the WebSphere Commerce Payments instance.

Note: From another OS/400 session, monitor for any messages that may be posted for the QShell session. The OS/400 command WRKSBSJOB QINTER can be used.

- Delete the following directories if they exist:

```
WC_userdir/instances/payments_instance_name  
WAS_userdir/logs/payments_instance_name_Commerce_Payments_Server  
Payments_userdir/instances/payments_instance_name
```

where *payments_instance_name* is the name of the WebSphere Commerce Payments instance you want to delete.

- If you plan to use other WebSphere Application Server application servers after deleting the WebSphere Commerce Payments instance, you must regenerate the WebSphere Application Server plug-in configuration file. For information on regenerating the WebSphere Application Server plug-in configuration file, refer to "Regenerating the WebSphere Application Server Web server plug-in configuration file" on page 65.

Chapter 13. WebSphere Application Server tasks

This section provides instructions for WebSphere Application Server tasks you may need to complete while installing and administering WebSphere Commerce.

Starting or stopping an application server

To start or stop an application server on iSeries, do the following:

1. Ensure the WebSphere Application Server subsystem is started by doing the following:
 - a. Start an OS/400 command session.
 - b. Issue the following command:
WRKSBS
 - c. Ensure that the following subsystem appears in the list of running subsystems displayed:
QEJBAS5

If the QEJBAS5 subsystem does not appear in the list of running subsystems, you must start the subsystem before starting an application server. For instructions on starting the subsystem, refer to “Starting the WebSphere Application Server subsystem” on page 64.

2. Start a QShell session by entering the following from an OS/400 command line:
QSH
3. Do one of the following:
 - To start an application server, issue the following command:
`WAS_installdir/bin/startServer application_server_name -instance WAS_instance_name`
 - To stop an application server, issue the following command:
`WAS_installdir/bin/stopServer application_server_name -instance WAS_instance_name`

application_server_name
is the name of the application server you want to start.

Application server name	Description
<i>WC_instance_name</i>	WebSphere Commerce application server
<i>payments_instance_name_Commerce_Payments_Server</i>	WebSphere Commerce Payments application server

where *instance_name* is the name of the WebSphere Commerce instance.

WAS_instance_name

is the name of the WebSphere Application Server instance in which you want to start the application server. The default WebSphere Application Server instance is *default*.

If you want to start the application server in the default WebSphere Application Server instance, the `-instance server_name` parameter is optional for the command. For example, enter the following command:

```
WAS_installdir/startServer application_server_name
```


application_server_name

is the name of the application server you want to start. Some common application servers

Application server name	Description
<i>WC_instance_name</i>	WebSphere Commerce application server
<i>payments_instance_name_Commerce_Payments_Server</i>	WebSphere Commerce Payments application server

where *instance_name* is the name of the WebSphere Commerce instance and *payments_instance_name* is the name of the WebSphere Commerce Payments instance.

Starting the WebSphere Application Server Administrative Console

Before starting the WebSphere Application Server Administrative Console, you must start the default WebSphere Application Server application server (*server1*). For instructions, refer to “Starting or stopping an application server” on page 63.

Open the WebSphere Application Server Administrative Console by opening a web browser and entering the following URL:

`http://hostname:port/admin`

or

`https://hostname:port/admin`

where *hostname* is the fully qualified TCP/IP name of the machine running WebSphere Application Server and *port* is the TCP/IP port for the WebSphere Application Server Administrative Console.

The default port for the WebSphere Application Server Administrative Console depends on the protocol specified in the URL. For the http protocol, the default port is 9090. For the https protocol, the default port is 9043.

Starting the WebSphere Application Server subsystem

Your user profile must have *JOBCTL authority to start the WebSphere Application Server subsystem.

To start the WebSphere Application Server subsystem on iSeries, do the following:

1. Start Transmission Control Protocol/Internet Protocol (TCP/IP). On the OS/400 command line, issue the following command:

```
STRTCP
```

2. Start the QEJBAS5 subsystem by running the following command on the OS/400 command line:

```
STRSBS SBSDB(QEJBAS5/QEJBAS5)
```

The default WebSphere Application Server instance will start automatically. The job for the default application server instance is *server1*.

For more information, see “Starting the QEJBAS5 subsystem” on page 65 and “Ending the QEJBAS5 subsystem” on page 65.

Starting the QEJBAS5 subsystem

To start any WebSphere Commerce instances, the WebSphere Application Server subsystem must be running on your iSeries machine. To check to see if the QEJBAS5 subsystem is running, perform the following steps:

1. Log on to the iSeries server.
2. From the OS/400 command line, type:
`WRKSBS`
3. Ensure that the QEJBAS5 subsystem is running. If it is not running, issue the following command from the OS/400 command line:
`STRSBS QEJBAS5/QEJBAS5`
4. To ensure that the subsystem has started, enter the following at the OS/400 command line:
`WRKACTJOB SBS(QEJBAS5)`

The subsystem will be displayed with the job SERVER1 running.

You can now proceed to start your WebSphere Commerce instance as described in “Starting the WebSphere Commerce instance” on page 57

Ending the QEJBAS5 subsystem

In order to end the QEJBAS5 subsystem, all the WebSphere Commerce instances, WebSphere Commerce Payments instances and non-default WebSphere Application Server applications must be stopped. Refer to the appropriate sections below to stop the instances that are running on the system. To ensure that all jobs have stopped, enter the following at the OS/400 command line:

```
WRKACTJOB SBS(QEJBAS5)
```

The subsystem will be displayed and no other jobs should be active within the subsystem.

You can now proceed to end the QEJBAS5 subsystem by entering the following at the OS/400 command line:

```
ENDSBS QEJBAS5
```

Regenerating the WebSphere Application Server Web server plug-in configuration file

To regenerate the Web server plug-in, do the following on the WebSphere Commerce node:

1. If it is not started, start the default application server — server1. Refer to “Starting or stopping an application server” on page 63 for instructions.
2. Open the WebSphere Application Server Administrative Console. For instructions, refer to “Starting the WebSphere Application Server Administrative Console” on page 64.
3. In the Navigation area, expand **Environment** and click **Update Web Server Plugin**.
4. Click **OK** to generate a new plugin-cfg.xml file.
5. The Message box will post the following entry when the plug-in has been updated:
The web server plugin configuration was updated successfully
6. Exit the WebSphere Application Server Administrative Console.

7. If WebSphere Commerce Payments is on a separate node, repeat all of these steps on the WebSphere Commerce Payments node.

If the Web server node is remote from the WebSphere Commerce node or the WebSphere Commerce Payments node, you will need to do the following:

1. Copy the plug-in from the WebSphere Commerce node to the Web server node.
2. If WebSphere Commerce and WebSphere Commerce Payments are on separate nodes, merge the WebSphere Commerce Payments plug-in with the WebSphere Commerce plug-in.
3. Restart the Web server according to the documentation provided with the Web server.

Chapter 14. Remote Web server tasks

This sections describes tasks that must be performed if you use a Web server running on a different node than WebSphere Commerce.

Note: The WebSphere Application Server 5.0 product must also be installed on the same node as where the Web Server is running.

Copying the plugin-cfg.xml file to Web server

To copy the plugin-cfg.xml file to the remote Web server, do the following:

1. Stop the Web server according the documentation provided with the Web server.
2. Copy the following file on the WebSphere Commerce node to the same location on the Web Server node:

WAS_userdir/config/cells/plugin-cfg.xml

Default values for *WAS_userdir* are listed in “Path variables” on page iv.

Important: The plugin-cfg.xml file contains directory-specific information. If you do not copy the file to the exact same directory structure on the Web server node, the Web server will not function correctly and WebSphere Commerce will be inaccessible.

3. Ensure that the path for the WebSphere Application Server plug-in is shown correctly in the httpd.conf file on the Web server node.

To check the path, open the httpd.conf file in a text editor and search for the following:

WebSpherePluginConfig

This entry should contain the full path to the plugin-cfg.xml file on the Web server node. If the path is incorrect, change the path, save the httpd.conf file.

4. Start the Web server according to the documentation provided with the Web server.

If you are working on a custom installation with WebSphere Commerce and WebSphere Commerce Payments on separate nodes, continue with “Merging the WebSphere Commerce Payments plugin-cfg.xml file.”

Merging the WebSphere Commerce Payments plugin-cfg.xml file

To merge the WebSphere Commerce Payments plugin-cfg.xml file with the Web server plugin-cfg.xml file , do the following:

1. Stop the Web server according the documentation provided with the Web server.
2. On the Web server node, open the plugin-cfg.xml file in a text editor. The full path of the plugin-cfg.xml file is the following:

WAS_userdir/config/cells/plugin-cfg.xml

Default values for *WAS_userdir* are listed in “Path variables” on page iv.

3. Open the plugin-cfg.xml file from the WebSphere Commerce Payments node in a text editor. The full path of the plugin-cfg.xml file is the following:

WAS_userdir/config/cells/plugin-cfg.xml

4. Locate the following text in the WebSphere Commerce Payments plugin-cfg.xml file:

```
<VirtualHostGroup Name="VH_PYM_instance_name">  
  <VirtualHost Name="short_host_name:5432"/>  
  <VirtualHost Name="host_name:5432"/>  
</VirtualHostGroup>
```

where the variables defined as follows:

instance_name

This is the name of the WebSphere Commerce Payments instance.

short_host_name

This is the short host name of the WebSphere Commerce Payments node.

host_name

This is the fully qualified host name of the WebSphere Commerce Payments node.

5. Copy this section to the Web server plugin-cfg.xml file. Ensure that you insert this section below existing entries of the same type.
6. Locate the following text in the WebSphere Commerce Payments plugin-cfg.xml file:

```
<ServerCluster Name="instance_name_Commerce_Payments_Server_short_host_name_Cluster">  
  <Server Name="instance_name_Commerce_Payments_Server">  
    <Transport Hostname="IP_address" Port="9081" Protocol="http">  
    <Transport Hostname="IP_address" Port="9091" Protocol="http">  
  </Server>  
  <PrimaryServers>  
    <Server Name="instance_name_Commerce_Payments_Server">  
  </PrimaryServers>  
</ServerCluster>
```

where the variables are defined as follows:

instance_name

This is the name of the WebSphere Commerce Payments instance.

short_host_name

This is the short host name of the WebSphere Commerce Payments node.

IP_address

This is the TCP/IP address of the WebSphere Commerce Payments node.

7. Copy this section to the Web server plugin-cfg.xml file. Ensure that you insert this section below existing entries of the same type.
8. Locate the following text in the WebSphere Commerce Payments plugin-cfg.xml file:

```
<UriGroup Name="VH_PYM_instance_name_instance_name_Commerce_Payments_Server_short_host_name_Cluster_URIs">  
  <Uri AffinityCookie="JSESSIONID" Name="/webapp/SampleCheckout/*">  
  <Uri AffinityCookie="JSESSIONID" Name="/webapp/PaymentManager/*">  
</UriGroup>
```

where the variables are defined as follows:

instance_name

This is the name of the WebSphere Commerce Payments instance.

short_host_name

This is the short host name (not fully-qualified) of the WebSphere Commerce Payments machine.

9. Copy this section to the Web server `plugin-cfg.xml` file. Ensure that you insert this section below existing entries of the same type.
10. Locate the following text in the WebSphere Commerce Payments `plugin-cfg.xml` file:

```
<Route ServerCluster="instance_name_Commerce_Payments_Server_short_host_name_Cluster"  
UriGroup="VH_PYM_instance_name_instance_name_Commerce_Payments_Server_short_host_name_Cluster_URIs"  
VirtualHostGroup="VH_PYM_instance_name">
```

where the variables are defined as follows:

instance_name

This is the name of the WebSphere Commerce Payments instance.

short_host_name

This is the short host name (not fully-qualified) of the WebSphere Commerce Payments machine.

11. Copy this section to the Web server `plugin-cfg.xml` file. Ensure that you insert this section below existing entries of the same type.
12. Save your changes and exit the text editor.
13. Start the Web server according to the documentation provided with the Web server.

Post-Store publishing tasks

If you are using a remote Web server, you must do the following every time you publish a store in WebSphere Commerce:

1. Replace the contents of the `Stores.war` directory on the Web server node with the contents of the `Stores.war` directory on the WebSphere Commerce.

The full path to the `Stores.war` directory on both nodes is the following:

```
WAS_userdir/installedApps/cell_name/WC_instance_name.ear/Stores.war
```

where the variables are defined in “Path variables” on page iv and “Variables used in this book” on page iv. The `WC_instance_name.ear` directory should have been copied to the Web server node after the creation of the WebSphere Commerce instance.

Chapter 15. Setting and changing passwords

Most components in WebSphere Commerce use user IDs and passwords that are validated by the operating system. For information on changing those passwords, refer to your operating system documentation. This chapter covers how to set and change passwords for WebSphere Commerce components that do not validate user IDs and passwords through the operating system.

Changing your Configuration Manager password

You can change the Configuration Manager password when you launch the Configuration Manager by clicking **Modify** in the window where you enter your user ID and password.

Alternately, to change the Configuration Manager password, issue the following commands in a QShell session:

1. Run the `wcs_encrypt` utility as follows:

```
cd WC_installdir/bin

wcs_encrypt.sh new_password
```

where *new_password* is new password for the Configuration Manager. An encrypted version of the new password will be generated by running the command as above.

2. Open the `PwdMgr.xml` file found in the `WC_userdir/instances` directory.
3. Modify the `LoginPassword` field, with the encrypted password generated in step 1 above.
4. Save your changes.

Changing the WebSphere Commerce Site Administrator password

You can change your password using the WebSphere Commerce Administration Console.

To change your password using WebSphere Commerce Administration Console, do the following:

1. Start the WebSphere Commerce Administration Console.
2. Log on with the Site Administrator ID and password created when the WebSphere Commerce instance was created.
3. Select the **Change password** check box and click **Log On**. The Change Password page displays.
4. In the **Old Password** field, type your current Administration Console logon password. This field accepts up to 128 alphanumeric characters.
5. In the **New Password** field, type a new logon password. This field accepts up to 128 alphanumeric characters.
6. In the **New password confirmation** field, re-type the password.
7. Click **Change** to save the new password. The Select Store and Language page displays.
8. Exit the WebSphere Commerce Administration Console.

Resetting the Site Administrator password

If you forget the Site Administrator password and want to reset the password, do the following:

1. Start a QShell session.
2. From the QShell session, issue the following command:

```
WC_installdir/bin/chgwcpwd.sh -database WC_database_name  
-schema WC_schema_name -instance WC_instance_profile_name  
-instancePwd WC_instance_profile_pwd -merKey WC_merchant_key  
-wcsUser site_admin_ID -wcsUserPwd new_site_admin_pwd  
[-oneWayHash true_or_false]
```

where the variables and parameters are defined as follows:

WC_installdir

Default values for this variable are listed in “Path variables” on page iv.

-database *WC_database_name*

This parameter specifies the name of the WebSphere Commerce relational database.

-schema *WC_schema_name*

This parameter specifies the name of the schema where the WebSphere Commerce instance resides. The may be the same as the name of the WebSphere Commerce instance.

-instance *WC_instance_profile_name*

This parameter specifies the name of iSeries user profile associated with the WebSphere Commerce instance. This profile name is usually the same name as the WebSphere Commerce instance.

-instancePwd *WC_instance_profile_pwd*

This is the password associated with the WebSphere Commerce instance user profile.

-merKey *WC_merchant_key*

This parameter specifies the WebSphere Commerce merchant key entered when the WebSphere Commerce instance was created.

-wcsUser *site_admin_ID*

This parameter specifies the ID for the WebSphere Commerce Site Administrator.

-wcsUserPwd *new_site_admin_pwd*

This parameter specifies the new password you want to assign to the WebSphere Commerce Site Administrator.

-oneWayHash *true_or_false*

This parameter is optional. If this parameter is not specified, a value of true is assumed for the -oneWayHash parameter.

WebSphere Commerce - Express Version 5.5 uses one way hash for password encryption. It is recommended that you use the default value for this parameter.

Recovering the Site Administrator ID

If you forget the Site Administrator ID defined when the WebSphere Commerce instance was created and you have no other IDs authorized as Site Administrators, you can recover the Site Administrator ID by doing the following:

1. Start iSeries Navigator from the Windows system where it is installed.
2. Expand **Databases**.
3. Right-click the name of the Relational Database where the schema of the WebSphere Commerce instance resides and select **Run SQL Scripts**. The **Run SQL Scripts** window opens.
4. Enter the following SQL statement in the window:

```
SELECT LOGONID FROM schema_name.USERREG WHERE USERS_ID=-1000
```

where *schema_name* is the name of the schema for your WebSphere Commerce instance resides.

This statement returns the Site Administrator ID.

Chapter 16. Web Server tasks

This chapter describes how to start and stop the Web server on iSeries. To see how to start and stop other components such as the WebSphere Commerce Configuration Manager, see “Starting the Configuration Manager” on page 40. To see how to start and stop other WebSphere Commerce components such as a WebSphere Commerce instance or WebSphere Commerce Payments, see Chapter 12, “WebSphere Commerce tasks,” on page 57.

Starting and stopping IBM HTTP Server

Starting your IBM HTTP Server instance

There is one IBM HTTP Server instance associated with your WebSphere Commerce instance. The IBM HTTP Server name will have the same name as your WebSphere Commerce instance. For example, if your WebSphere Commerce instance is `demo1`, then your IBM HTTP Server name will also be `demo1`.

If you have WebSphere Commerce Payments installed, there will be another IBM HTTP Server instance associated with the WebSphere Commerce Payments instance. The IBM HTTP Server instance will have the same name as the WebSphere Commerce Payments instance. For example, if your WebSphere Commerce Payments is `wpm`, then your IBM HTTP Server instance will also be `wpm`.

You can start the IBM HTTP Server instance from either the OS/400 command line or a Web browser.

To start your IBM HTTP Server instance from the OS/400 command line, do the following:

1. Log on to the iSeries machine as a user with QSECOFR class authority.
2. From the command line, type:

```
STRTCPSVR SERVER(*HTTP) HTTPSVR(instance_name)
```

or

```
STRTCPSVR SERVER(*HTTP) HTTPSVR(payments_instance_name)
```

To start your IBM HTTP Server instance from a Web browser, do the following:

1. Ensure that the HTTP administrator server instance is running by typing the following at an OS/400 command line:

```
WRKACTJOB SBS(QHTTPSVR)
```

Make sure that there are ADMIN jobs in the subsystem. If the HTTP administrator server instance is not running, start it by typing the following at an OS/400 command line:

```
STRTCPSVR SERVER(*HTTP) HTTPSVR(*ADMIN)
```

2. Once the HTTP administrator server instance is active, go to the following URL:

```
https://iSeries_host_name:2010
```

where 2010 is the Web configuration server port and *iSeries_host_name* is the fully qualified host name of your iSeries machine. If you are using the non-secure HTTP administrator server at port 2001, replace this URL with:

```
http://iSeries_host_name:2001
```

If you use the non-secure port, your passwords and other information will not be encrypted.

3. Click **IBM HTTP Server for iSeries**.
4. Click the **Manage** tab.
5. Select the specific server with which you want to work.
6. Click on **Start** (near the bottom of the screen).
7. Check the message area for any problems with starting the instance.
8. To verify, type the following from the OS/400 command line:

```
WRKACTJOB SBS(QHTTPSVR)
```

and look for entries for your Web server instance under the **Subsystem/Job** heading and QTMHHTTP under the **User** heading.

Stopping your IBM HTTP Web Server instance

You can stop the IBM HTTP Server instance from either the OS/400 command line or a Web browser.

To stop your IBM HTTP Server instance from the OS/400 command line, do the following:

1. Log on to the iSeries machine as a user with QSECOFR class authority.
2. From the command line, type:

```
ENDTCPSVR SERVER(*HTTP) HTTPSVR(instance_name)
```

or

```
ENDTCPSVR SERVER(*HTTP) HTTPSVR(payments_instance_name)
```

To stop either instance from a Web browser, do the following:

1. Type the following URL:

```
https://iSeries_host_name:2010
```

Note: If you are using the non-secure HTTP administrator server at port 2001, replace this URL with:

```
http://iSeries_host_name:2001
```

If you use the non-secure port, your passwords and other information will not be encrypted.

2. Click **IBM HTTP Server for iSeries**.
3. Click the **Manage** tab.
4. Select the specific server with which you want to work.
5. Click **Stop** (near the bottom of the screen).
6. Check the message area for any problems with stopping the instance.
7. To verify, type the following from the OS/400 command line:

```
WRKACTJOB SBS(QHTTPSVR)
```

and look to make sure that there are no entries for the Web server instance under the **Subsystem/Job** heading and QTMHHTTP is not under the **User** heading.

Starting and stopping the IBM HTTP administrator

To start the HTTP administrator server instance, do the following:

1. Log on to the iSeries machine as a user with QSECOFR class authority.
2. From the command line, type the following:
`STRTCPSVR SERVER(*HTTP) HTTPSVR(*ADMIN)`
3. To verify, type the following from the OS/400 command line:
`WRKACTJOB SBS(QHTTPSVR)`

To see if the server has been started successfully, look for the ADMIN entries under the **Subsystem/Job** heading and the QTMHHTTP entry under the **User** heading.

The HTTP administrator server port number is 2010.

Note: Port 2001 is also available for a non-secure connection for the HTTP administrator server instance. If you use the non-secure port, your passwords and other information will not be encrypted.

To stop the HTTP administrator server instance, do the following:

1. Log on to the iSeries machine as a user with QSECOFR class authority.
2. From the command line, type the following:
`ENDTCPSVR SERVER(*HTTP) HTTPSVR(*ADMIN)`
3. To verify, type the following from the OS/400 command line:
`WRKACTJOB SBS(QHTTPSVR)`

and ensure that there are no entries for ADMIN under the **Subsystem/Job** heading and QTMHHTTP is not under the **User** heading.

The HTTP administrator server port number is 2010.

Note: Port 2001 is also available for a non-secure connection for the HTTP administrator server instance. If you use the non-secure port, your passwords and other information will not be encrypted.

Chapter 17. User IDs required when administering WebSphere Commerce

Administration in the WebSphere Commerce environment requires a variety of user IDs. These user IDs along with their requisite authorities are described in the list below. For the WebSphere Commerce user IDs, the default passwords are identified.

iSeries user profiles

Two iSeries user profiles are used and referred to frequently when you install and configure WebSphere Commerce:

- A user profile which you create and use to install WebSphere Commerce and start the Configuration Manager. To install and configure WebSphere Commerce, you must use an iSeries user profile of USRCLS(*SECOFR) or use the QSECOFR user profile. If you need to create a user profile, refer to "Creating an iSeries user profile" on page 80.
- A user profile which is created by the Configuration Manager when you create a WebSphere Commerce instance. This user profile is also referred to as the "instance user profile." A user profile of USRCLS(*USER) is created by the Configuration Manager each time you create a WebSphere Commerce instance.

Configuration Manager user ID

The Configuration Manager tool's graphical interface allows you to modify the way WebSphere Commerce is configured. The default Configuration Manager user ID and password are `webadmin` and `webibm`.

You can access Configuration Manager from any machine that is on the same network as WebSphere Commerce, and has the Configuration Manager client installed.

WebSphere Commerce Site Administrator

The Site Administrator user ID and password apply to the following WebSphere Commerce tools:

WebSphere Commerce Accelerator

To access the WebSphere Commerce Accelerator from a machine running a Windows operating system, open your Internet Explorer Web browser, and type the following URL:

```
https://host_name:8000/accelerator
```

WebSphere Commerce Administration Console

To access the WebSphere Commerce Administration Console from a machine running a Windows operating system, open your Internet Explorer Web browser, and type the following URL:

```
https://host_name:8002/adminconsole
```

WebSphere Commerce Organization Administration Console

To access the WebSphere Commerce Organization Administration Console from a machine running a Windows operating system, open your Internet Explorer Web browser, and type the following URL:

```
https://host_name:8004/orgadminconsole
```

The initial Site Administrator user ID and password are specified during the creation of a WebSphere Commerce instance. WebSphere Commerce requires that the Site Administrator password adhere to the following rules:

- The password must be at least 8 characters in length.
- The password must include at least 1 numeric digit.
- The password does not contain more than 4 occurrences of the same character.
- The password does not repeat the same character more than 3 times.

Creating an iSeries user profile

Before you install WebSphere Commerce, ensure that you have access to the QSECOFR user profile, or an iSeries user profile of USRCLS(*SECOFR). This user profile must have a CCSID other than 65535, and should either have English language settings, or language settings that match the default language you will choose for your instance.

If you need to create an iSeries user profile, you can either use the OS/400 command line or use iSeries Access. If you are using the command line, do the following to create a user profile:

1. Enter CRTUSRPF.
2. Press PF4 for a prompt.
3. Complete the necessary parameters, and then press Enter to create the user profile.

If you are using iSeries Access, do the following to create a user profile:

1. On the navigation tree, double-click the iSeries server where you want to create the new user.
2. Double-click **Users and Groups**.
3. Click **All Users**. A list of all of the users on the iSeries displays in the right panel.
4. Right-click **All Users**, then select **New User**. A New User window opens.
5. Enter the required information, and then press Add to create the user profile.

The iSeries user profile should be created with the following localized settings:

Table 2. Localized settings for iSeries user profiles

Language	CCSID	LangID	CountryID
English	37	ENU	US
French	297	FRA	FR
German	273	DEU	DE
Italian	280	ITA	IT
Spanish	284	ESP	ES
Brazilian Portuguese	37	PTB	BR
Japanese	5035	JPN	JP
Korean	933	KOR	KR
Traditional Chinese	937	CHT	TW
Simplified Chinese	935	CHS	CN

Using an iSeries user profile other than those defined above may work, but has not

been tested.

Part 6. Appendixes

Appendix A. Known problems and limitations

This section covers known problems and limitations with WebSphere Commerce. Refer to the README file for any late-breaking problems or limitations.

Additional troubleshooting information can be gathered by turning on the trace feature for WebSphere Commerce in WebSphere Application Server. For more information on the trace feature, refer to *WebSphere Commerce Administration Guide*.

Web server problems and limitations

Secure (HTTPS) URLs do not work

If any of the secure URLs for WebSphere Commerce do not work, the SSL certificate for the Web server may be missing or expired.

Refer to the Web server documentation for information on installing or updating the SSL certificate.

WebSphere Commerce instance problems and limitations

WebSphere Commerce instance does not start properly

Attempting to start a WebSphere Commerce instance may fail for a number of reasons. As this instance is started on your iSeries system within a QShell session, the following error may be posted when an instance does not start successfully:

```
EJB6121: Application server did not start.
```

Some of the key problems with starting a WebSphere Commerce instance are listed here:

- The instance name may not be entered correctly.

On iSeries systems that support both upper and lower case characters, it is necessary to enter the correct case for your *instance_name* OR *payments_instance_name* when invoking the startServer command. As an example, if your *instance_name* is defined as demostore and the following command is entered:

```
startServer WC_DEMOSTORE
```

the instance will not start.

In the log file *WAS_userdir/logs/WC_demostore/native_stdout.log*, the following error messages are posted:

```
WSVR0004E: The server name, WC_DEMOSTORE, is not a valid name.  
WSVR0009E: Error occurred during startup.
```

Return to the QShell session and ensure that the correct case for the *instance_name* is specified for the startServer command.

- Port conflicts may exist. Check the SystemOut.log file found in the *WAS_userdir/logs/WC_instance_name* directory.

Following are some messages that may be logged to indicate that a port conflict exists:

SRVE0146E: Failed to Start Transport on host, port 9093.
The most likely cause is that the port is already in use.

NMSV0011E: Unable to start bootstrap server using port 9810.
Verify that no servers or other processes are already using the bootstrap server port.

ADMC0015W: SOAP connector failed to start with exception: Address already in use.

To correct a port conflict issue, you will need to select another port number that will not conflict with one that is already running on the iSeries system. Issue the following command at an OS/400 command line:

```
NETSTAT *CNN
```

The command returns a list of ports that are currently active on your system. Ensure that the port number you selected is currently not being used by another application on the iSeries system.

Note: Refer to “Port numbers used by WebSphere Commerce - Express” on page 4 to ensure you do not select a port that may already be reserved by WebSphere Commerce.

Once you have determined the new port number, do the following:

1. From a Web browser, navigate to the WebSphere Application Server Administrative Console. For details, refer to “Starting the WebSphere Application Server Administrative Console” on page 64.
2. Enter a User ID and click **OK**
3. On the left side, expand **Servers** and click **Application Servers**
4. Click on the link for the Application Server that has a port conflict
5. The next page shows General Properties and Additional Properties. Scroll down to the listing of the **Additional Properties**
6. Depending on the message that was posted in the SystemOut.log file, you may need to change a Transport Port or an End Point Port.
If the message indicates a problem with a Transport port, click **Web Container** → **HTTP transports**
If the message indicates a problem with a Bootstrap, SOAP connector or another port, click **End Points**.
7. For HTTP transports, click on the appropriate link under the **Host** column. For End Points, click on the appropriate link under the **End Point Name** column.
8. Change the port number to the new port number. Click **Apply**
9. The Message(s) box should have the following posted:
Changes have been made to your local configuration. Click Save to apply changes to the master configuration.
10. Click on the **Save** in the Message(s) box.
11. A **Save to Master Configuration** message box is displayed. Click the **Save** button within this message box.
12. When the save has completed, the Administrative Console home page is shown.
13. On the left side, expand **Environment** and click **Update Web Server Plugin**
14. Click **OK** to update the plug-in configuration file.

15. The message box will post the following entry when the plug-in has been updated:
The web server plugin configuration was updated successfully.
16. Logout from the Administrative Console, and restart your WebSphere Commerce instance.

Usage notes for the console install

Note the following if you plan to use the console install method for your WebSphere Commerce - Express installation:

- An `[n]` displays at the end of most selection lines. The `n` is a number representing the default choice for the selection. For example, the following line indicates that the default selection is the next panel:

Press 1 for Next panel, 3 to Cancel or 4 to Redisplay [1]

You can press Enter to accept this choice to proceed to the next panel. If you wish to cancel or re-display the panel, type the valid selection number and press **Enter**.

- When you enter a number for a selection, do not reposition your cursor. Inserting extra spaces before the number will produce an error message.
- As you progress through the installation, you will note that some information scrolls off the 5250 screen. In these instances, you can page back in order to view this information. Some of the sections that may have scrolled information include:
 - Welcome page
 - Software License Agreement
 - Selection of Install Types
 - Confirmation page of installation options
- The greater-than symbol (>) at the left side of the screen indicates that you have made a selection.
- Some panels allow more than one selection. Entering the appropriate selection numbers will show the selection as chosen. Choosing the same selection again will remove it from the selected list. When all selections have been made, select the choice to continue to the next panel.
- If the WebSphere Application Server product is being installed with WebSphere Commerce or WebSphere Commerce Payments, you will be asked to insert CDs for the WebSphere Application Server product. The message will be similar to the following:

Insert the IBM WebSphere Application Server CD and specify the location of the CD-ROM drive below

Specifying the location of the CD-ROM drive is not required. Insert the CD in the same CD-ROM drive from where the WebSphere Commerce - Express installation was started.

- If the WebSphere Application Server product is being installed, a status bar is displayed showing the percentage completed. When the second WebSphere Application Server CD is inserted, the original status bar will not be completed. Instead, additional vertical bars will be displayed on another line starting at the left side.
- For some National Language installations, the status bar for both the WebSphere Commerce and WebSphere Application Server installation will display as a vertical bar.

- When the installation of the WebSphere Application Server product completes, the following message is displayed:

Insert the IBM WebSphere Commerce - Express CD 1 and specify the location of the CD-ROM drive below.

Specifying the location of the CD-ROM drive is not required. Insert the CD in the same CD-ROM drive that was used for the installation of WebSphere Application Server.

- After the installation of WebSphere Commerce completes, exit the PASE session with the F3 key.

WebSphere Commerce Payments instance problems and limitations

Remote WebSphere Commerce Payments instance does not work

If a remote WebSphere Commerce Payments instance does not work, the WebSphere Commerce Payments instance may be configured incorrectly.

To check the configuration of WebSphere Commerce Payments, do the following:

1. On the WebSphere Commerce node, open the following file in a text editor:

```
WC_userdir/instances/WC_instance_name/xml/  
WC_instance_name.xml
```

where *WC_instance_name* is the name of the WebSphere Commerce instance.

Default values for *WC_userdir* are listed in “Path variables” on page iv.

2. Search for the following text:

```
<PaymentManager
```

3. Ensure that the Hostname entry under the found text points to the Web server node used by WebSphere Commerce Payments.

The entry should contain the fully qualified host name of the Web server node.

4. Save any changes and exit the text editor.

5. On the WebSphere Commerce Payments node, open the following file in a text editor:

```
Payments_userdir/instances/payments_instance_name/xml/  
Payments_instance_name.xml
```

where *payments_instance_name* is the name of the WebSphere Commerce Payments instance.

Default values for *Payments_userdir* are listed in “Path variables” on page iv.

6. Search for the following text:

```
<PMWCSRealm
```

7. Ensure that the Hostname entry under the found text points to the Web server node used by WebSphere Commerce.

The entry should contain the fully qualified host name of the Web server node.

8. Save any changes and exit the text editor.

9. Restart WebSphere Commerce and WebSphere Commerce Payments. For instructions, refer to Chapter 12, “WebSphere Commerce tasks,” on page 57.

WebSphere Commerce Payments instance does not start

The WebSphere Commerce Payments instance will not start if WebSphere Application Server is configured to use a port other than port 9090.

To confirm that this is the cause of the problem, do the following:

1. Open the following in a text editor:

```
WAS_userdir/logs/payments_instance_name_Commerce_Payments_Server/  
SystemOut.log
```

where *payments_instance_name* is the name of the WebSphere Commerce Payments instance.

Default values for *WAS_userdir* are listed in “Path variables” on page iv.

2. Search the file for the following message:

```
SRVE0146E: Failed to Start Transport on host *, port 9090.
```

If you have this error message, change the WebSphere Commerce Payments port. For instructions, refer to “Considerations when creating a WebSphere Commerce Payments instance” on page 47.

If you do not have this error message, contact your IBM support representative.

Appendix B. Uninstalling WebSphere Commerce Components

This chapter describes how to uninstall various WebSphere Commerce components

Uninstalling WebSphere Commerce

Note: Uninstalling WebSphere Commerce from your iSeries system will also uninstall WebSphere Commerce Payments if the Payments product is installed on the same iSeries system.

To uninstall WebSphere Commerce, do the following:

1. Start a QShell session by entering the following command:
`STRQSH`
2. Change your current directory to the WebSphere Commerce `uninstall` directory
`cd WC_installdir/_uninst`
3. Run the uninstall command:
`uninstall.qsh`
4. When the Welcome message displays, press **1** for the Next panel.
5. The WebSphere Commerce directory displays along with the features that will be uninstalled. Press **Enter** to begin the uninstallation.

Note: The listing will show many features that may not be OS/400 specific, or may duplicate an OS/400 entry. These extra entries can be ignored and will not cause any problems during the uninstall.

6. The uninstallation of WebSphere Commerce begins with the message 'Uninstalling product...'.
Press **Enter** to continue.
7. When the uninstallation is complete, the following message will be displayed: 'The InstallShield Wizard has successfully uninstalled IBM WebSphere Commerce. Choose Finish to exit the wizard.'
Press **Enter** to exit the Wizard.
8. Press the **F3** function key to exit the QShell session.

Default values for `WC_installdir` are listed in "Path variables" on page iv.

Uninstalling WebSphere Commerce Configuration Manager client

To uninstall the Configuration Manager client on the Windows PC where the Configuration Manager client is installed, do the following:

1. Navigate to the `cfgmgr_installdir` directory, where `cfgmgr_installdir` is the directory where the Configuration Manager client is installed.
2. In the `cfgmgr_installdir` directory, navigate to the `_uninst` directory.
3. Double-click the file `uninstall.exe`.
4. A WebSphere Commerce window displays. Select the preferred Language and click **OK**.

Note: The language selection is only available in the National Language version of WebSphere Commerce - Express and not available for the English version.

5. On the Welcome Page, click **Next**.
6. The next screen shows the *cfgmgr_installdir* directory.
7. Click **Next** to begin uninstalling the Configuration Manager client code.
8. On the InstallShield Wizard screen, click **Finish** to close the wizard.

Alternately, you can also use the **Add/Remove Programs** option from the Control Panel on the Windows PC. Clicking on **Change/Remove** will begin the uninstall program. Follow steps 4 through 8 as above.

Note: The *cfgmgr_installdir* directory may remain after the uninstallation completes. At this time, you can delete this directory on your Windows PC.

Uninstalling WebSphere Application Server

For information on uninstalling WebSphere Application Server, refer to the installation and initial configuration book available through the @server iSeries WebSphere Application Server library:

<http://www.ibm.com/servers/eserver/series/software/websphere/wsappserver/docs/docws50.html>

Uninstalling WebSphere Application Server Network Deployment

For information on uninstalling WebSphere Application Server Network Deployment, refer to the installation and initial configuration book available through the @server iSeries WebSphere Application Server Network Deployment library:

<http://www.ibm.com/servers/eserver/series/software/websphere/wsappserver/docs/docnd50.html>

Reinstalling WebSphere Commerce and its Components

If you are reinstalling the entire WebSphere Commerce package follow the instructions in Part 2, "Installing WebSphere Commerce," on page 19.

If you are reinstalling portions of WebSphere Commerce, refer to Chapter 6, "Completing a custom installation," on page 23. You will need to delete and recreate your instance following the instructions in Part 3, "Creating a WebSphere Commerce and a WebSphere Commerce Payments instance," on page 35.

Appendix C. Where to find more information

More information about the WebSphere Commerce system and its components is available from a variety of sources in different formats. The following sections indicate what information is available and how to access it.

WebSphere Commerce information

The following are the sources of WebSphere Commerce information:

- WebSphere Commerce online help
- WebSphere Commerce technical library

WebSphere Commerce online help

The WebSphere Commerce online information is your primary source of information for customizing, administering, and reconfiguring WebSphere Commerce. After you have installed WebSphere Commerce, you can access topics in the online information by visiting the following URL:

`https://host_name:8000/wchelp/`

where *host_name* is the fully qualified host name of your WebSphere Commerce instance as defined in “Variables used in this book” on page iv.

WebSphere Commerce technical library

The WebSphere Commerce technical library is available at the following URL:

`http://www.ibm.com/software/commerce/library/`

A copy of this book, and any updated versions of this book, are available as PDF files from the Library section of the WebSphere Commerce Web site. In addition, new and updated documentation may also be available from the WebSphere Commerce technical library Web site.

WebSphere Commerce Payments information

Help for WebSphere Commerce Payments is available by clicking the following help icon:



This help icon displays on the WebSphere Commerce Payments user interface within the WebSphere Commerce Administration Console and WebSphere Commerce Accelerator and in the standalone WebSphere Commerce Payments user interface at the following URL:

`http://host_name:http_port/webapp/PaymentManager`

or

`https://host_name:ssl_port/webapp/PaymentManager`

Where the variables are defined as follows:

host_name

The fully qualified TCP/IP host name of the Web server associated with WebSphere Commerce Payments.

http_port

The HTTP port used by WebSphere Commerce Payments. The default HTTP port is 5432.

ssl_port

The SSL port used by WebSphere Commerce Payments. The default SSL port is 5433.

If WebSphere Commerce Payments is SSL-enabled, you can use either URL. If WebSphere Commerce Payments is not SSL-enabled, you can only use the non-secure URL (http).

Help is also available at the following URL:

`http://host_name:http_port/webapp/PaymentManager/language/docenter.html`

or

`https://host_name:ssl_port/webapp/PaymentManager/language/docenter.html`

Where the variables are defined as follows:

host_name

The fully qualified TCP/IP host name of the Web server associated with WebSphere Commerce Payments.

http_port

The HTTP port used by WebSphere Commerce Payments. The default HTTP port is 5432.

ssl_port

The SSL port used by WebSphere Commerce Payments. The default SSL port is 5433.

language

A language code for the language in which the help page will be displayed. It is two letters for most languages. The language codes are as follows:

Language	Code
German	de
English	en
Spanish	es
French	fr
Italian	it
Japanese	ja
Korean	ko
Brazilian Portuguese	pt
Simplified Chinese	zh
Traditional Chinese	zh_TW

More information about WebSphere Commerce Payments and the Payments Cassettes is available at the WebSphere Commerce Technical Library:

<http://www.ibm.com/software/commerce/library/>

IBM HTTP Server information

IBM HTTP Server information is available at the IBM HTTP Server Web site:

<http://www.ibm.com/software/webservers/httpservers/>

The documents are in HTML format, PDF files, or both.

WebSphere Application Server information

WebSphere Application Server information is available at the WebSphere Application Server InfoCenter:

<http://www.ibm.com/software/webservers/appserv/infocenter.html>

DB2 Universal Database information

DB2 documentation is available at the DB2 Technical Library:

<http://www.ibm.com/software/data/db2/library/>

For information about SQL statements, refer to the DB2 Universal Database for iSeries SQL Reference at the following URL:

<http://publib.boulder.ibm.com/html/as400/infocenter.html>

Other IBM publications

You can purchase copies of most IBM publications from your IBM authorized dealer or marketing representative.

Notices

This information was developed for products and services offered in the U.S.A.

IBM may not offer the products, services, or features discussed in this document in other countries. Consult your local IBM representative for information on the products and services currently available in your area. Any reference to an IBM product, program, or service is not intended to state or imply that only that IBM product, program, or service may be used. Any functionally equivalent product, program, or service that does not infringe any IBM intellectual property right may be used instead. However, it is the user's responsibility to evaluate and verify the operation of any non-IBM product, program, or service.

IBM may have patents or pending patent applications covering subject matter described in this document. The furnishing of this document does not grant you any license to these patents. You can send license inquiries, in writing, to:

*IBM Director of Licensing
IBM Corporation
North Castle Drive
Armonk, NY 10504-1785
U.S.A.*

For license inquiries regarding double-byte (DBCS) information, contact the IBM Intellectual Property Department in your country or send inquiries, in writing, to:

*IBM World Trade Asia Corporation
Licensing
2-31 Roppongi 3-chome, Minato-ku
Tokyo 106, Japan*

The following paragraph does not apply to the United Kingdom or any other country where such provisions are inconsistent with local law:

INTERNATIONAL BUSINESS MACHINES CORPORATION PROVIDES THIS PUBLICATION "AS IS" WITHOUT WARRANTY OF ANY KIND, EITHER EXPRESS OR IMPLIED, INCLUDING, BUT NOT LIMITED TO, THE IMPLIED WARRANTIES OF NON-INFRINGEMENT, MERCHANTABILITY OR FITNESS FOR A PARTICULAR PURPOSE.

Some states do not allow disclaimer of express or implied warranties in certain transactions, therefore, this statement may not apply to you.

This information could include technical inaccuracies or typographical errors. Changes are periodically made to the information herein; these changes will be incorporated in new editions of the publication. IBM may make improvements and/or changes in the product(s) and/or the program(s) described in this publication at any time without notice.

Any references in this information to non-IBM Web sites are provided for convenience only and do not in any manner serve as an endorsement of those Web sites. The materials at those Web sites are not part of the materials for this IBM product and use of those Web sites is at your own risk.

IBM may use or distribute any of the information you supply in any way it believes appropriate without incurring any obligation to you.

Licensees of this program who wish to have information about it for the purpose of enabling: (i) the exchange of information between independently created programs and other programs (including this one) and (ii) the mutual use of the information which has been exchanged, should contact:

*IBM Canada Ltd.
Office of the Lab Director
8200 Warden Avenue
Markham, Ontario
L6G 1C7
Canada*

Such information may be available, subject to appropriate terms and conditions, including in some cases, payment of a fee.

The licensed program described in this document and all licensed material available for it are provided by IBM under terms of the IBM Customer Agreement, IBM International Program License Agreement or any equivalent agreement between us.

Trademarks

The IBM logo and the following terms are trademarks or registered trademarks of International Business Machines Corporation in the United States or other countries or both:

AS/400	AS/400e	DB2
DB2 Universal Database	@server	IBM
iSeries	OS/2	OS/400
WebSphere		

Java and all Java-based trademarks and logos are trademarks or registered trademarks of Sun Microsystems, Inc. in the United States, other countries, or both.

Microsoft and Windows are trademarks or registered trademarks of Microsoft Corporation in the United States, other countries, or both.

Other company, product and service names may be trademarks or service marks of others.