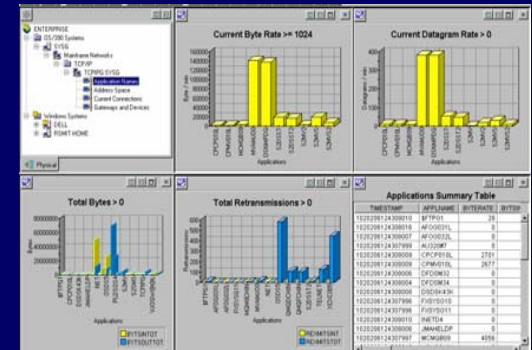


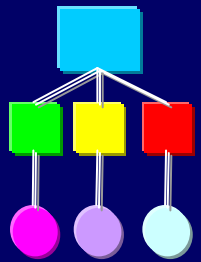


IBM zSeries Network Performance Management



Ernie Gilman
IBM Sr. Consulting IT Specialist
egilman@us.ibm.com

- Overview of IBM Tivoli zSeries network management
- IBM Tivoli NetView for z/OS Integration
 - with Tivoli Enterprise Portal Scenarios
- IBM Tivoli OMEGAMON for Mainframe Network
 - Using new CS for z/OS API

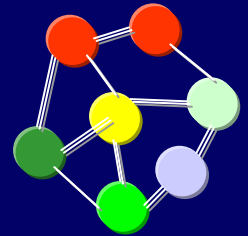


SNA

- Generic Alerts
- VR Flow Control
- HPR
- SNI
- Intelligent agents
- Hierarchical (Subarea)
- LU2
- Sessions Controlled
- 3745 (CCL)

TCP/IP

- Traps
- Discards
- Enterprise Extender
- Internet
- MIB Polling
- Peer to Peer
- TN3270
- FTP Uncontrolled
- OSA-Express, Cisco CIP
- Denial of Service Attack



- Implement Topology
- Set up MIB Polling
- Set Thresholds
- Traces

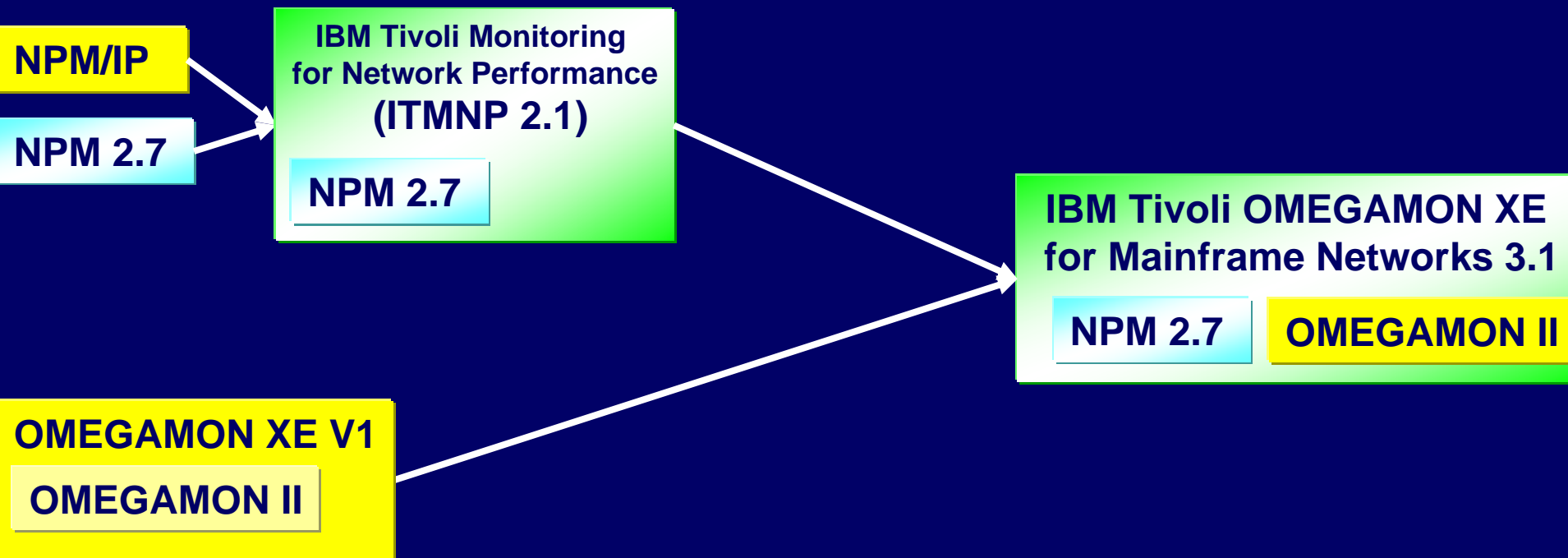


OSA-Express
FTP TCP/IP

EE **HPR**
TN3270

SNA
APPN & Subarea

IBM Network Performance Management Evolution

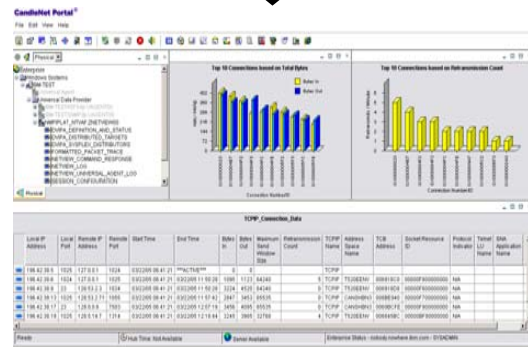


IBM leveraging OMEGAMON with existing solutions



z/OS

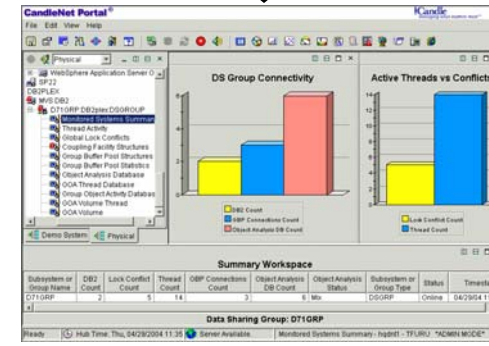
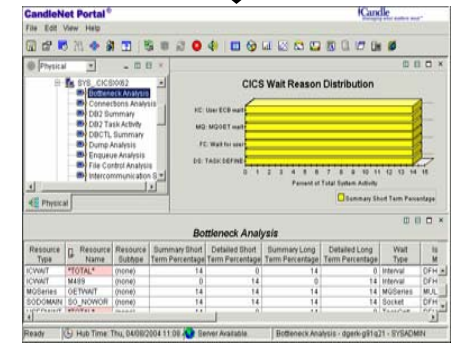
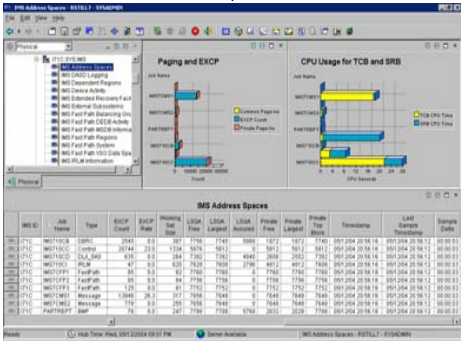
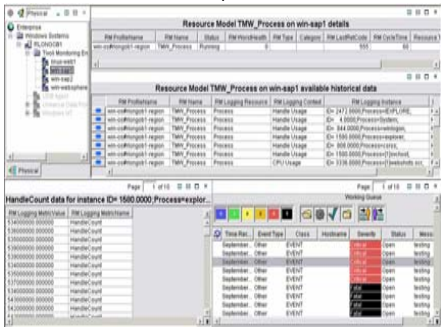
NetView for z/OS



DB2 PE / PM
CICS PM
IMS PM
Distributed TEC & ITM

NetView for z/OS V5.2

z/OS 1.7 Management Console



NetView for z/OS user interfaces

■ Console Evolution

- Text-based 3270-type display
- Web browser 3270-type display
- Platform Independent Java 3270-type console
- Platform Independent Java Graphics console provides graphical at-a-glance views of the network's status
- Tivoli enterprise Portal

The screenshots illustrate the evolution of NetView for z/OS user interfaces:

- Text-based 3270-type display:** Shows a command prompt with system messages and automation table entries.
- Web browser 3270-type display:** Shows a graphical map of the world with various network nodes and a sidebar menu.
- Platform Independent Java 3270-type console:** Shows a graphical interface for network status with a sidebar menu and a main display area.
- Platform Independent Java Graphics console:** Shows a detailed view of network connections, including a table of TCP/IP connections and two bar charts showing connection statistics.

| DVIPA IP Address | System Name | Distributor Subname | Origin | Status | Mobility | Distributor Status | Service Manager |
|------------------|-------------|---------------------|--------|--------|-----------|--------------------|-----------------|
| 146.09.99.99 | NMPP10 | TCPP | define | active | immediate | no | no |
| 2012.10.1 | NMPP10 | TCPP | define | active | immediate | none | no |
| 2012.10.2 | NMPP10 | TCPP | define | active | immediate | none | no |
| 2012.10.3 | NMPP10 | TCPP | define | active | immediate | none | no |
| 2012.10.4 | NMPP10 | TCPP | define | active | immediate | none | no |
| 3013.10.4 | NMPP10 | TCPP | define | active | immediate | active | no |

■ Common user interface

- Candle Net Portal (CNP) and Tivoli Enterprise Portal (TEP)
- Manage z/OS system resources from a single user interface.
- Easy to use and Intuitive
- Displays data in graphs, charts and table format

■ Easy to configure

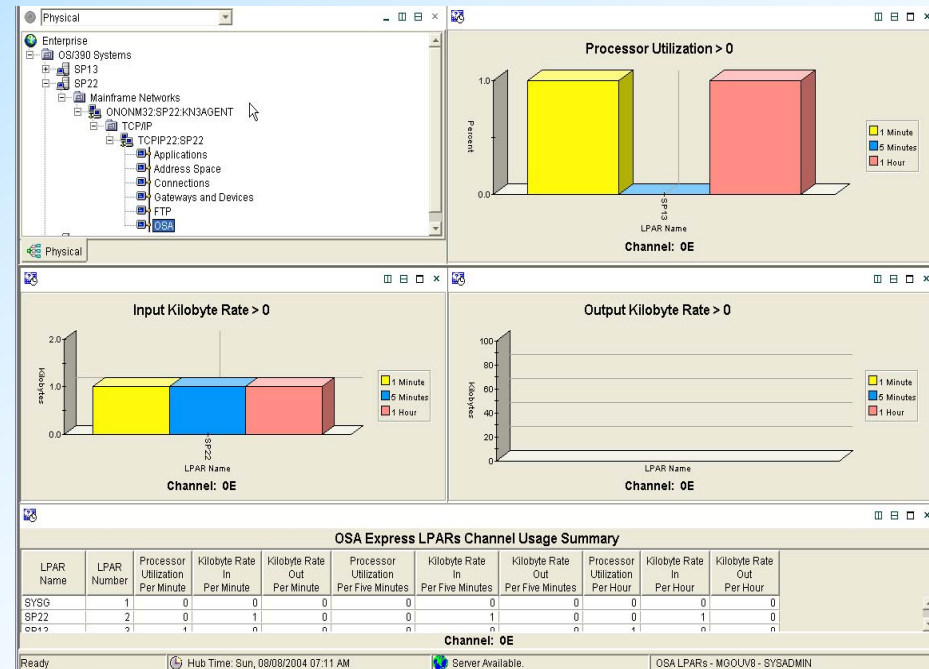
- Define thresholds, Filters, Sort
- Customize workspaces and reports
- Generate Events

■ Out of the box

- Situations
- Problem signatures and Expert Advice

■ Integrated

- OMEGAMON products
- NetView for z/OS
- TEC
- ITM 6.1 (TEP)
- z/OS Health Checker



Scenario 1

OSA-Express performance problems

Scenario Background

- The System Programmer gets notified by the Operator that a user is having response time problems accessing a z/OS Telnet applications.

NetView TCP/IP Connection Data Workspace

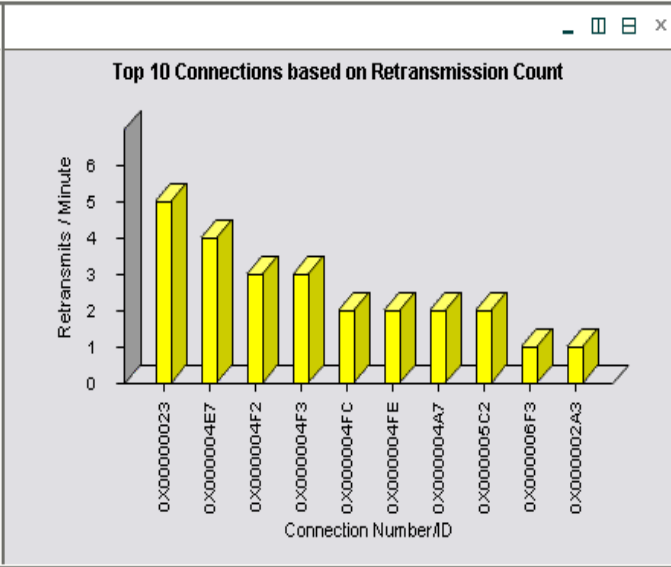
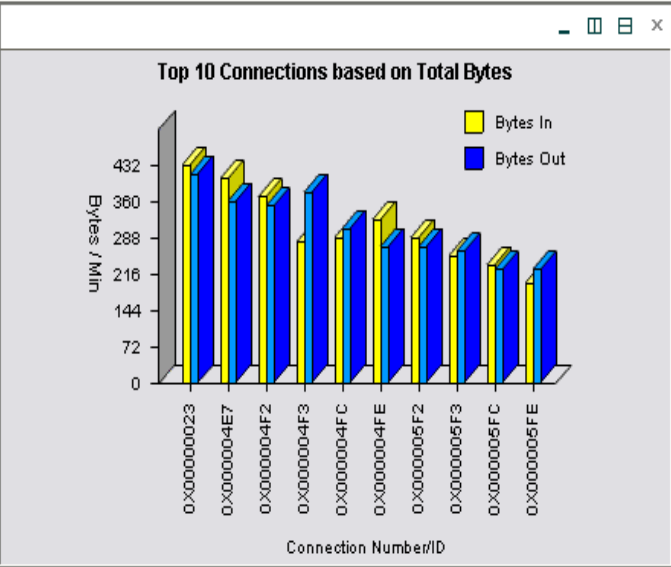
File Edit View Help



NetView-MFN View

- NetView-MFN View
 - TCP/IP
 - VTAM
 - NetView for z/OS - HASL125_HCENS:KAW00
 - DVIPA Connections
 - DVIPA Definition and Status
 - DVIPA Distributed Targets
 - DVIPA Sysplex Distributors
 - Formatted Packet Trace
 - NetView Audit Log
 - NetView Command Response
 - NetView Log
 - Session Data
 - TCP/IP Connection Data**

Physical



TCPIP_Connection_Data

| Local IP Address | Local Port | Remote IP Address | Remote Port | Start Time | End Time | Bytes In | Bytes Out | Maximum Send Window Size | Retransmission Count | TCPIP Name | Address Space Name | TCB Address | Socket Resource ID | Protocol Indicator | Telnet LU Name | SNA Application Name |
|------------------|------------|-------------------|-------------|---------------|-----------|----------|-----------|--------------------------|----------------------|------------|--------------------|-------------|--------------------|--------------------|----------------|----------------------|
| | | | | | ACTIVE*** | 0 | 0 | | | TCPIP | | | | | | |
| | | | | 2/05 11:50:28 | | 1123 | 64240 | | 5 | TCPIP | T520EENV | 006918C0 | 00000F800000000 | N/A | | |
| | | | | 2/05 11:50:28 | | 3224 | 452 | | 0 | TCPIP | T520EENV | 006918D8 | 00000F600000000 | N/A | | |
| | | | | 2/05 11:57:42 | | 2847 | 3452 | | 0 | TCPIP | SANGLIBN3 | 006918A8 | 00000F700000000 | N/A | | |
| | | | | 2/05 12:07:19 | | 3456 | | | | TCPIP | | | 00000F800000000 | N/A | | |

2. Link to the OMEGAMON for Mainframe Networks TCP/IP Connection workspace to view performance data

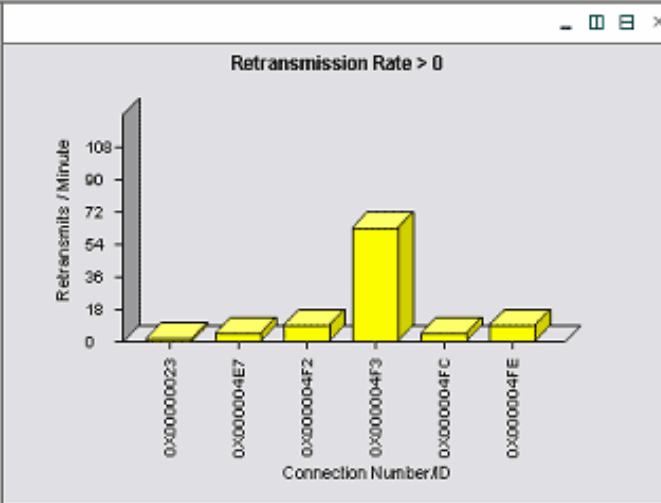
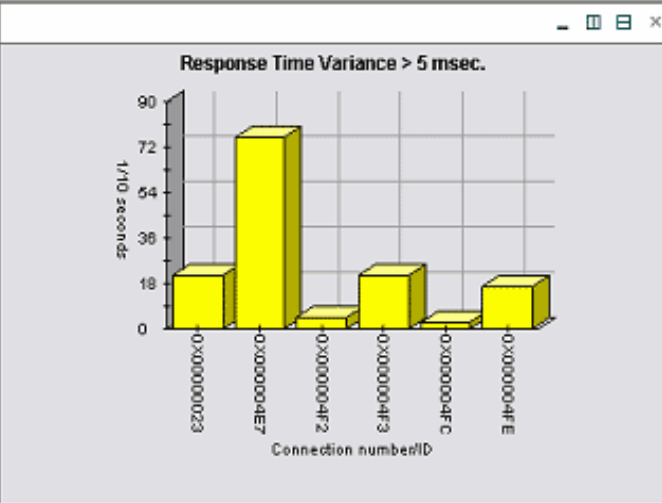
1. NetView TCP/IP Connection Data workspace shows that the connection is active and has not been "bouncing" frequently.

File Edit View Help

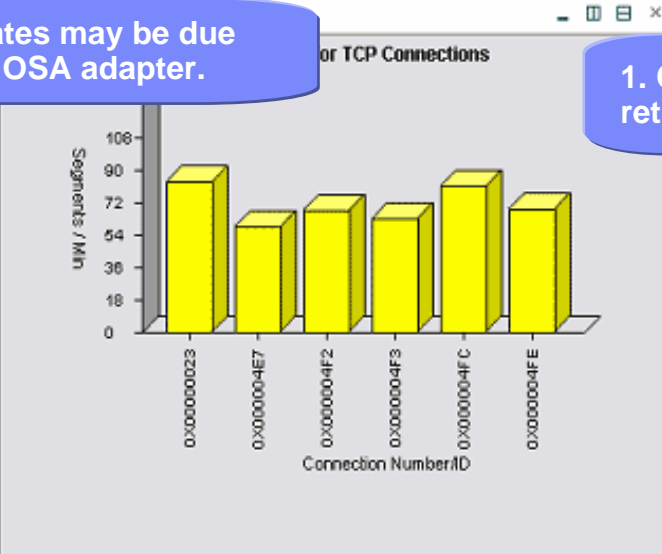
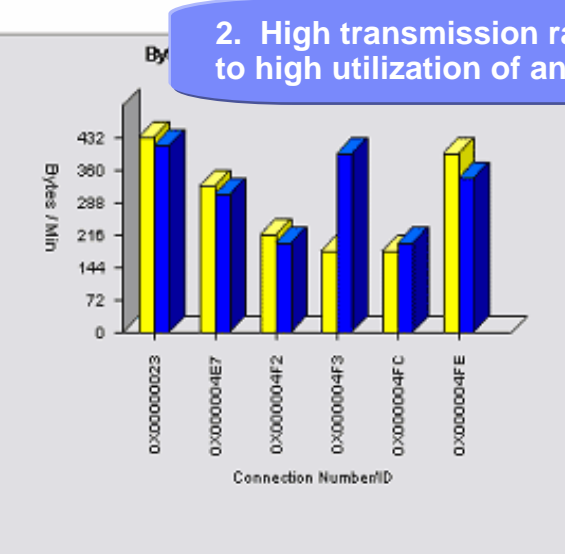


Physical

- 0053
 - Mainframe Networks
 - CAN3310:0053:KN3AGENT
 - TCP/IP
 - TCPIP:0053
 - Applications
 - Address Space
 - Connections
 - Gateways and Devices
 - FTP
 - OSA
 - TCPIP Memory Statistics
 - TCPIP Server Session Av
 - TCPIP



2. High transmission rates may be due to high utilization of an OSA adapter.



1. Connection has a high retransmission rate.

Summary Table

| Protocol | Local IP | Local Port | Remote IP | Remote Port | Retransmission Rate |
|----------|--------------|------------|-------------|-------------|---------------------|
| TCPIP | 196.42.38.5 | 1025 | 127.0.0.1 | 1024 | 0 |
| TCPIP | 196.42.38.6 | 1024 | 127.0.0.1 | 1025 | 0 |
| TCPIP | 196.42.38.9 | 23 | 128.53.2.3 | 1024 | 0 |
| TCPIP | 196.42.38.13 | 1025 | 128.53.2.71 | 1055 | 84 |
| TCPIP | 196.42.38.17 | 23 | 128.0.0.6 | 7503 | 0 |
| TCPIP | 196.42.38.19 | 1025 | 128.5.14.7 | 1314 | 0 |

NetView Formatted TCP/IP Packet Trace



Formatted Packet Trace - 9.82.38.42 - SYSADMIN

File Edit View Help

NetView-MFN View

- CSM
- EE
- HPR
- NetView for z/OS - HASL125_HCEN5:KWWD
 - DVIPA Connections
 - DVIPA Definition and Status
 - DVIPA Distributed Targets
 - DVIPA Sysplex Distributors
 - Formatted Packet Trace**
 - NetView Audit Log
 - NetView Command Response
 - NetView Log

Physical NetView-MFN View

Page: 1 of 4

Packet Trace Summary Table

| Record Type | Packet Trace |
|-------------|-------------------------------------|
| SUM | ===== |
| SUM | 2 segmented trace records read |
| SUM | 0 segmented trace records were lost |
| SUM | 99 trace records read |
| SUM | 0 records could not be validated |
| SUM | 0 data trace records processed |

Packet Trace Details Table

| Record Type | Packet Trace |
|-------------|--|
| DET | |
| DET | DP Nr hh:mm:ss.mmmmmm lpld Seq_num Ack_num ... |
| DET | Data Source/Destination |
| DET | OU 1 15:19:34.931192 E775 80 |
| DET | 04098400 9.82.56.125-2918 |
| DET | 9.82.38.16-2850 |
| DET | IU 2 15:19:34.944228 9D39 1024 |
| DET | 04008400 9.82.38.16-2850 |
| DET | 9.82.56.125-2918 |
| DET | IU 4 15:19:34.945566 E776 4 |
| DET | 00000000 127.0.0.1-1770 |
| DET | 127.0.0.1-1770 |
| DET | 011 5 15:19:34.946888 E777 80 |

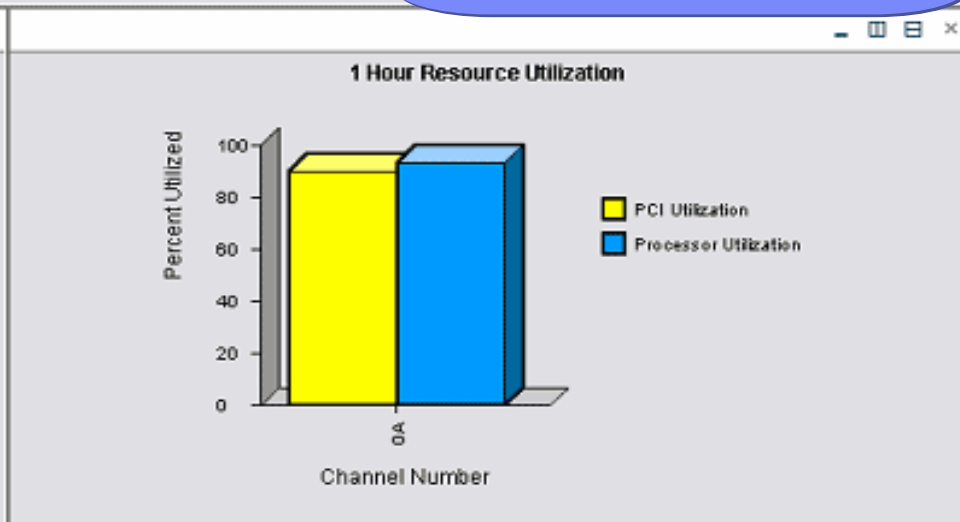
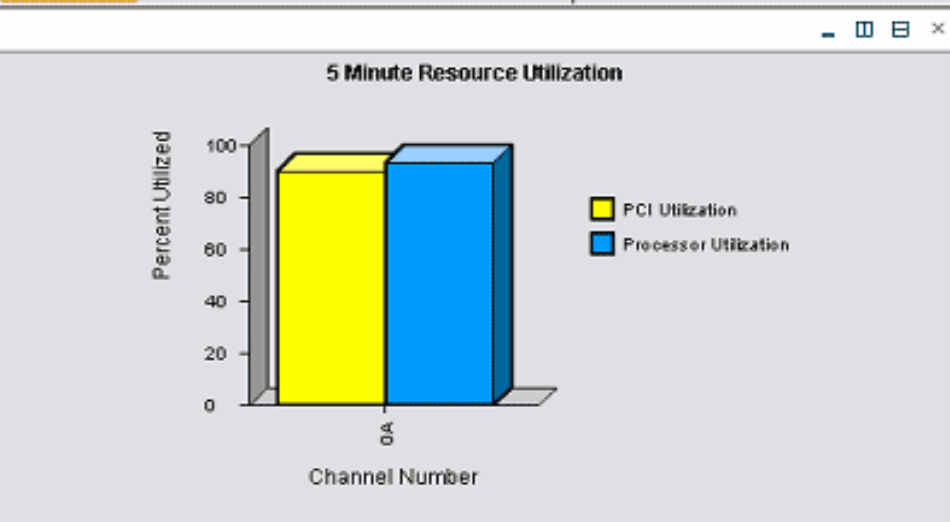
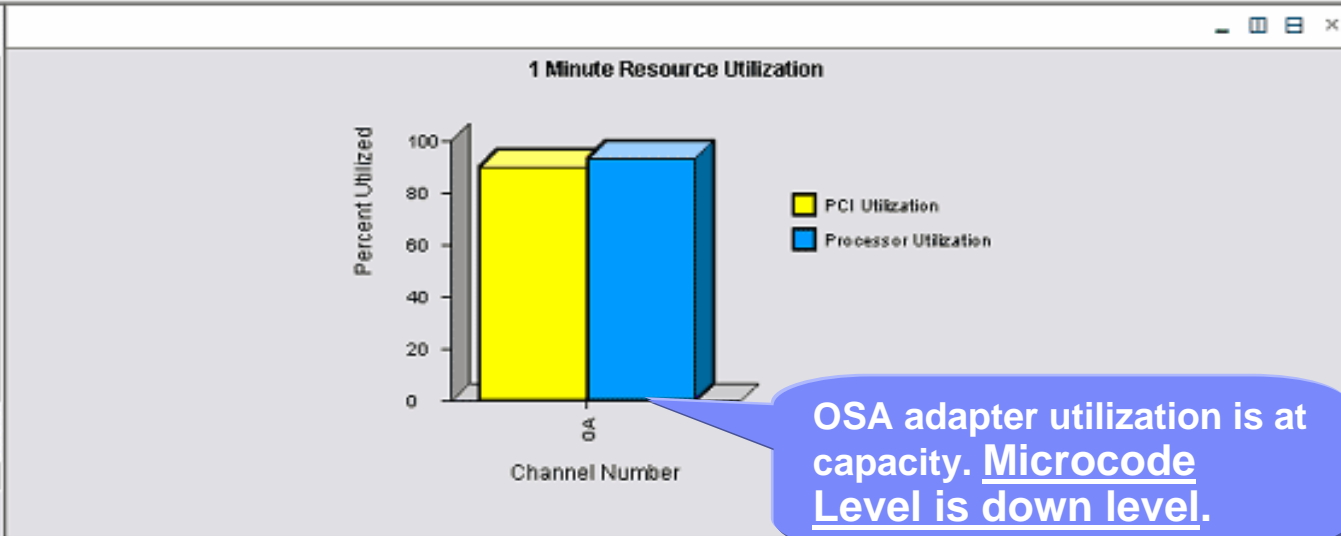
Ready Hub Time: Wed, 11/30/2005 03:29 PM Server Available. Formatted Packet Trace - 9.82.38.42 - SYSADMIN

File Edit View Help



Physical

- 0053
 - Mainframe Networks
 - CAN3310:0053:KN3AGENT
 - TCP/IP
 - TCPIP:0053
 - Applications
 - Address Space
 - Connections
 - Gateways and Devices
 - FTP
 - OSA
 - TCP/IP Memory Statistics
 - TN3270 Server Session Av
 - TCPIPB:0053



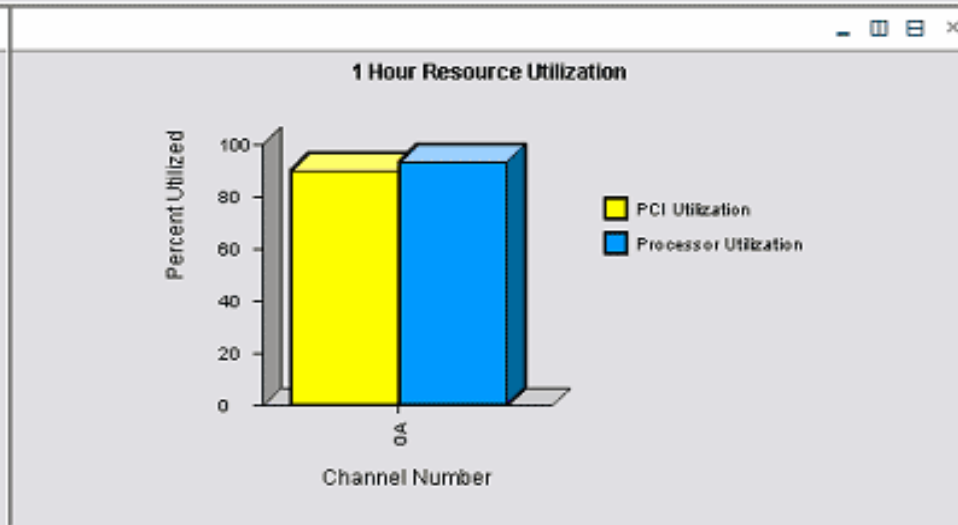
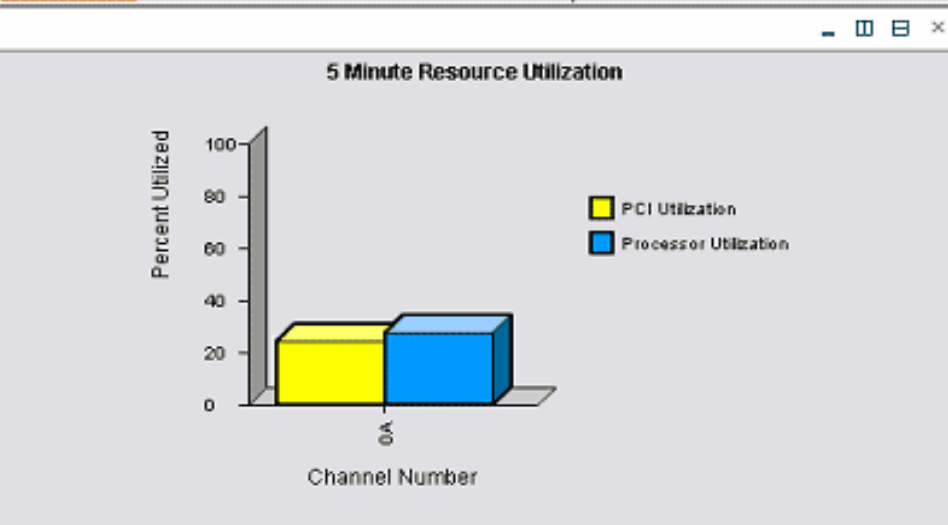
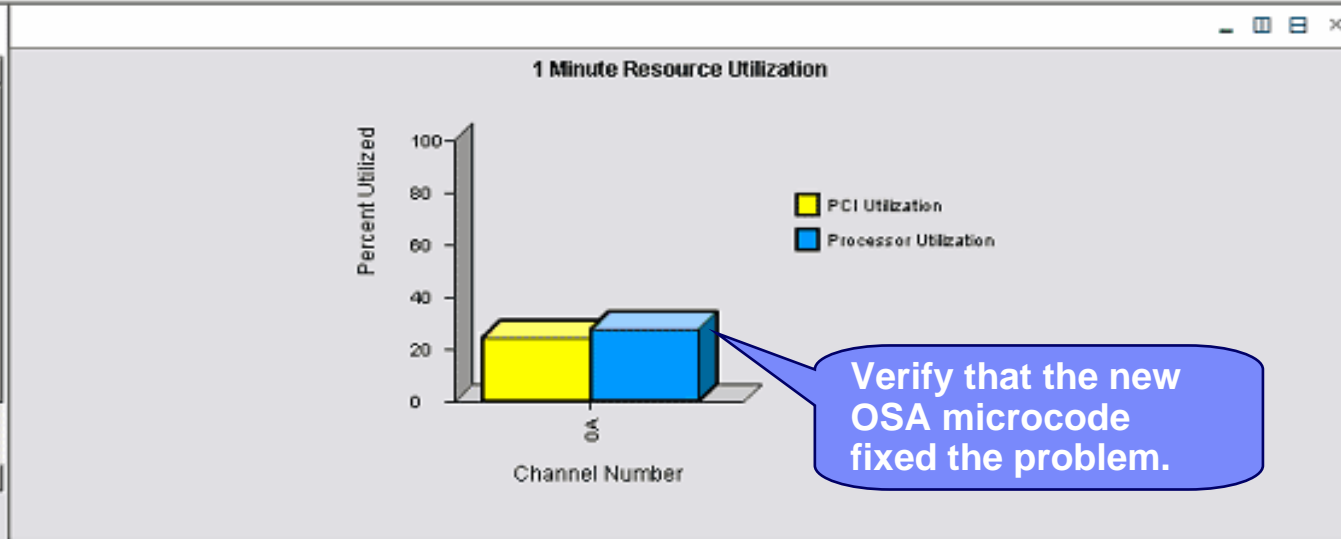
Ready | Hub Time: Not Available | Server Available | Enterprise Status - nobody.nowhere.ibm.com - SYSADMIN

File Edit View Help



Physical

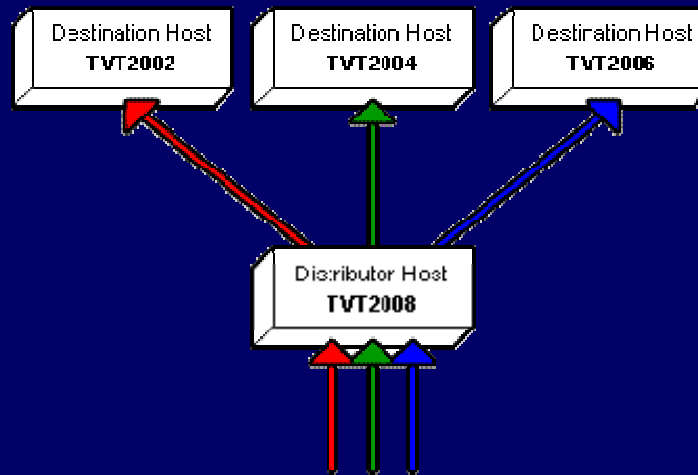
- 0053
 - Mainframe Networks
 - CAN3310:0053:KN3AGENT
 - TCP/IP
 - TCPIP:0053
 - Applications
 - Address Space
 - Connections
 - Gateways and Devices
 - FTP
 - OSA**
 - TCP/IP Memory Statistics
 - TN3270 Server Session Av
 - TCPIPB:0053



Ready Hub Time: Not Available Server Available Enterprise Status - nobody.nowhere.ibm.com - SYSADMIN

Scenario 2

DVIPA Workload by Destination Hosts



Scenario Background

- The System Programmer gets notified by the Operator that a user is having response time problems accessing a z/OS Telnet applications.
- The System Programmer views the DVIPA Distributed Targets Workspace to investigate the workload distribution of the telnet connections across the DVIPA telnet targets.

Animated

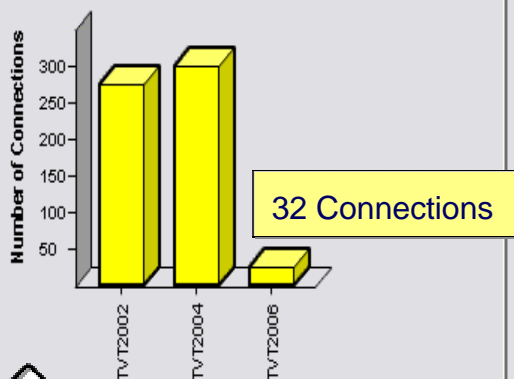
File Edit View Help



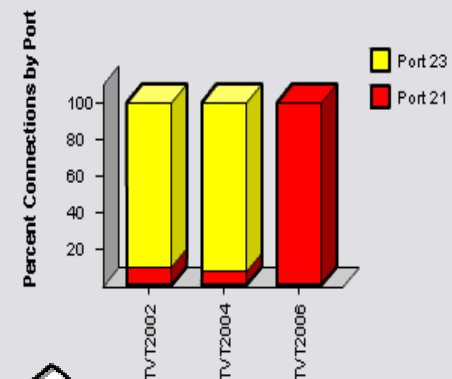
NetView-MFN View

- NetView-MFN View
 - TCP/IP
 - VTAM
 - NetView for z/OS - HASL125_HCEN5:KWV00
 - DVIPA Connections
 - DVIPA Definition and Status
 - DVIPA Distributed Targets
 - DVIPA Sysplex Distributors
 - Formatted Packet Trace
 - NetView Audit Log
 - NetView Command Response
 - NetView Log
 - Session Data

DVIPA Workload by Destination Host



Percent Workload by Port per Destination Host



He decides to check the NetView Log to see if there are any messages pertaining to TVT2006.

This chart shows that TVT2006 has a disproportionately small amount of connections. This could indicate a problem with the connections going to TVT2006 or that TVT2006 is not being utilized efficiently.

This chart shows that there are no telnet connections on TVT2006, which explains why the first chart shows so few overall connections.

Physi

| DVIPA IP Address | Port | Distributor Short Host Name | Distributor TCP Name | IP Address | Host Name | Protocol | Count | Other Info |
|------------------|------|-----------------------------|----------------------|------------|-----------|----------|-------|------------|
| 146.84.175.112 | 23 | TVT2008 | TCPIP8 | | | | | |
| 146.84.175.112 | 23 | TVT2008 | TCPIP8 | | | | | |
| 146.84.175.112 | 23 | TVT2008 | TCPIP8 | 193.1.1.16 | TVT2006 | Telnet | 2 | |
| 146.84.175.112 | 21 | TVT2008 | TCPIP8 | 193.1.1.12 | TVT2002 | FTPD | 1 | |
| 146.84.175.113 | 23 | TVT2008 | TCPIP8 | 193.1.1.12 | TVT2002 | Telnet | 1 | |
| 146.84.175.113 | 23 | TVT2008 | TCPIP8 | 193.1.1.14 | TVT2004 | Telnet | 1 | |
| 146.84.175.113 | 23 | TVT2008 | TCPIP8 | 193.1.1.16 | TVT2006 | Telnet | 2 | |
| 146.84.175.112 | 21 | TVT2008 | TCPIP8 | 193.1.1.14 | TVT2004 | FTPD | 1 | |
| 146.84.175.114 | 23 | TVT2008 | TCPIP8 | 193.1.1.12 | TVT2002 | Telnet | 1 | |

He verifies that there are telnet servers configured for TVT2006 but there are no connections.

Ready Hub Time: Not Available Server Available Enterprise Status - nobody.nowhere.ibm.com - SYSADMIN

Animated

File Edit View Help

NetView-MFN View

NetView-MFN View

- TCP/IP
- VTAM
- NetView for z/OS - HASL125_HCEN5:KWV00
 - DVIPA Connections
 - DVIPA Definition and Status
 - DVIPA Distributed Targets
 - PA Sysplex Distributors

Message Rate

Top Ten Messages IDs in the NetView Log

He clicks on DVIPA Distributed Targets in the navigator pane. This navigates him to the DVIPA Distributed Target pane so that he can verify that the problem has been resolved.

He browses the log and notices there is a spike in activity around noon. This could signify that there was a problem around that time. Additionally, he could view historical data to determine if this pattern occurred over the last several days.

In addition, this chart indicates that a message pertaining to the Telnet server has been issued frequently.

| ID | Source | Target | Priority | Time | Message |
|--------|--------|--------|----------|----------|---|
| 002280 | NETOP1 | NTV7B | % | 00:00:00 | - CNM249E DSISCMED: NO DATA FOUND ... |
| 002281 | NETOP1 | NTV7B | P% | 06:58:20 | Q IST526I ROUTE FAILED FROM 182 TO 254... |
| 002282 | DSIWEB | NTV7B | B | 07:45:11 | B CNMENSEC NULL IPCHECK 127.0.0.1 |
| 002283 | DSIWEB | NTV7B | | 07:45:11 | I NULL IPCHECK 127.0.0.1 |
| 002284 | DSIWEB | NTV7B | | 07:45:11 | C securitycheck = PASSED |
| 002285 | DSIWEB | NTV7B | P% | 08:27:28 | B FKXEGTPF |
| 002286 | NETOP1 | NTV7B | P% | 08:45:05 | Q IST526I ROUTE FAILED FROM 227 TO 2... |
| 002287 | NETOP1 | NTV7B | P% | 08:45:05 | Q IST526I ROUTE FAILED FROM 183 TO 2... |

Ready Hub Time: Not Available

He browses the log for that timeframe. There are messages indicating that the telnet application has been looping and not accepting connections. He **recycles the Telnet servers on TVT2006**

e.ibm.com - SYSADMIN

DVIPA Distributed Targets Workspace



Animated

File Edit View Help

NetView-MFN View

NetView-MFN View

- TCP/IP
- VTAM
- NetView for z/OS - HASL125_HCEN5:KVV00
 - DVIPA Connections
 - DVIPA Definition and Status
 - DVIPA Distributed Targets
 - DVIPA Sysplex Distributors
 - Formatted Packet Trace
 - NetView Audit Log
 - NetView Command Response
 - NetView Log
 - Session Data
 - TCPIP Connection Data

Physical NetView-MFN View

DVIPA Workload by Destination Host

| Destination Host | Number of Connections |
|------------------|-----------------------|
| TVT2002 | ~280 |
| TVT2004 | ~310 |
| TVT2006 | ~230 |

Percent Workload by Port per Destination Host

| Destination Host | Port 21 (%) | Port 23 (%) |
|------------------|-------------|-------------|
| TVT2002 | ~10 | ~90 |
| TVT2004 | ~10 | ~90 |
| TVT2006 | ~25 | ~75 |

He can visually see that connections to TVT2006 are looking better

This chart shows that TVT2006 has Telnet connections once again.

| DVIPA IP Address | Port | Distributor Short Host Name | Distri Name | Address | Host Name | Service | Number Servers | Connections | ... | |
|------------------|------|-----------------------------|-------------|------------|-----------|---------|----------------|-------------|-----|---------|
| 146.84.175.112 | 23 | TVT2008 | TCPIP8 | 193.1.1.12 | TVT2002 | Telnet | 2 | 43 | 2 | UNKNOWN |
| 146.84.175.112 | 23 | TVT2008 | TCPIP8 | 193.1.1.14 | TVT2004 | Telnet | 1 | 128 | 1 | UNKNOWN |
| 146.84.175.112 | 23 | TVT2008 | TCPIP8 | 193.1.1.16 | TVT2006 | Telnet | 2 | 40 | 2 | UNKNOWN |
| 146.84.175.112 | 21 | TVT2008 | TCPIP8 | 193.1.1.12 | TVT2002 | FTPD | 1 | 55 | 1 | UNKNOWN |
| 146.84.175.112 | 21 | TVT2008 | TCPIP8 | 193.1.1.12 | TVT2002 | Telnet | 1 | 51 | 2 | UNKNOWN |
| 146.84.175.112 | 21 | TVT2008 | TCPIP8 | 193.1.1.14 | TVT2004 | Telnet | 1 | 133 | 1 | UNKNOWN |
| 146.84.175.112 | 21 | TVT2008 | TCPIP8 | 193.1.1.16 | TVT2006 | Telnet | 2 | 35 | 2 | UNKNOWN |
| 146.84.175.112 | 21 | TVT2008 | TCPIP8 | 193.1.1.14 | TVT2004 | FTPD | 1 | 90 | 1 | UNKNOWN |
| 146.84.175.112 | 21 | TVT2008 | TCPIP8 | 193.1.1.12 | TVT2002 | Telnet | 1 | 120 | 1 | UNKNOWN |

He verifies that the Telnet DVIPA target for TVT2006 has connections. He decides to navigate to the DVIPA Connections workspace to verify that traffic is flowing over these connections.

Server Available Enterprise Status - nobody.nowhere.ibm.com - SYSADMIN

Animated

File Edit View Help

NetView-MFN View

NetView-MFN View

- TCP/IP
- VTAM
- NetView for z/OS - HASL125_HCEN5:KWV00
 - DVIPA Connections
 - DVIPA Definition and Status
 - DVIPA Distributed Targets
 - DVIPA Sysplex Distributors
 - Formatted Packet Trace
 - NetView Audit Log
 - NetView Command Response
 - NetView Log
 - Session Data
 - TCPIP Connection Data

Physical NetView-MFN View

Top 10 DVIPA Connections based on Total Bytes

| Connection Number/ID | Bytes In | Bytes Out |
|----------------------|----------|-----------|
| 0X000000023 | 432 | 432 |
| 0X0000004E7 | 416 | 416 |
| 0X0000004F2 | 392 | 392 |
| 0X0000004F3 | 368 | 368 |
| 0X0000004FC | 344 | 344 |
| 0X0000004FE | 320 | 320 |
| 0X0000006F2 | 296 | 296 |
| 0X0000006F3 | 272 | 272 |
| 0X0000006FC | 248 | 248 |
| 0X0000006FE | 224 | 224 |

DVIPA Connections

| | Local IP Address | Local Port | Remote IP Address | Remote Port | Bytes In | Bytes Out | Server Job Name | Connection ID | LU Name | Application Name |
|----------------------|------------------|------------|-------------------|-------------|----------|-----------|-----------------|---------------|----------|------------------|
| Link | 196.42.38.6 | 23 | 127.0.0.1 | 1025 | 1095 | 1123 | TCPIP | 14899 | NTE1TS02 | NTCPE103 |
| | 196.42.38.6 | 23 | 128.53.2.3 | 1024 | 3224 | 4520 | TCPIP | 14990 | NTE1TS03 | NTCPE214 |
| | | | | 1055 | 284 | 3453 | TCPIP | 14991 | NTE1IMS1 | NTCPE104 |
| | | | | 7503 | | | | | NTE1IMS2 | NTCPE216 |
| | | | | 1314 | | | | | NTE1TS04 | NTCPE217 |
| | | | | 1025 | | | | | NTE1TS05 | NTCPE103 |

The link in the NetView DVIPA Connections table will take you to the OMEGAMON MFN TCP/IP Connection workspace.

He verifies that the Bytes In and Bytes out counters indicate traffic is flowing across the connections.

Ready Hub Time: Not Available Server Available Enterprise Status - nobody.nowhere.ibm.com - SYSADMIN

TCP/IP Connection Data Workspace



Animated

File Edit View Help

NetView-MFN View

NetView-MFN View

- TCP/IP
- VTAM
- NetView for z/OS - HASL125_HCEN5:KWV00
 - DVIPA Connections
 - DVIPA Definition and Status
 - DVIPA Distributed Targets
 - DVIPA Sysplex Distributors
 - Formatted Packet Trace
 - NetView Audit Log
 - NetView Command Response
 - NetView Log
 - Session Data
 - TCPIP Connection Data

Physical NetView-MFN View

Top 10 Connections based on Total Bytes

The first bar chart shows the top 10 connections based on total bytes and provides an indication of the connections with the highest amount of traffic.

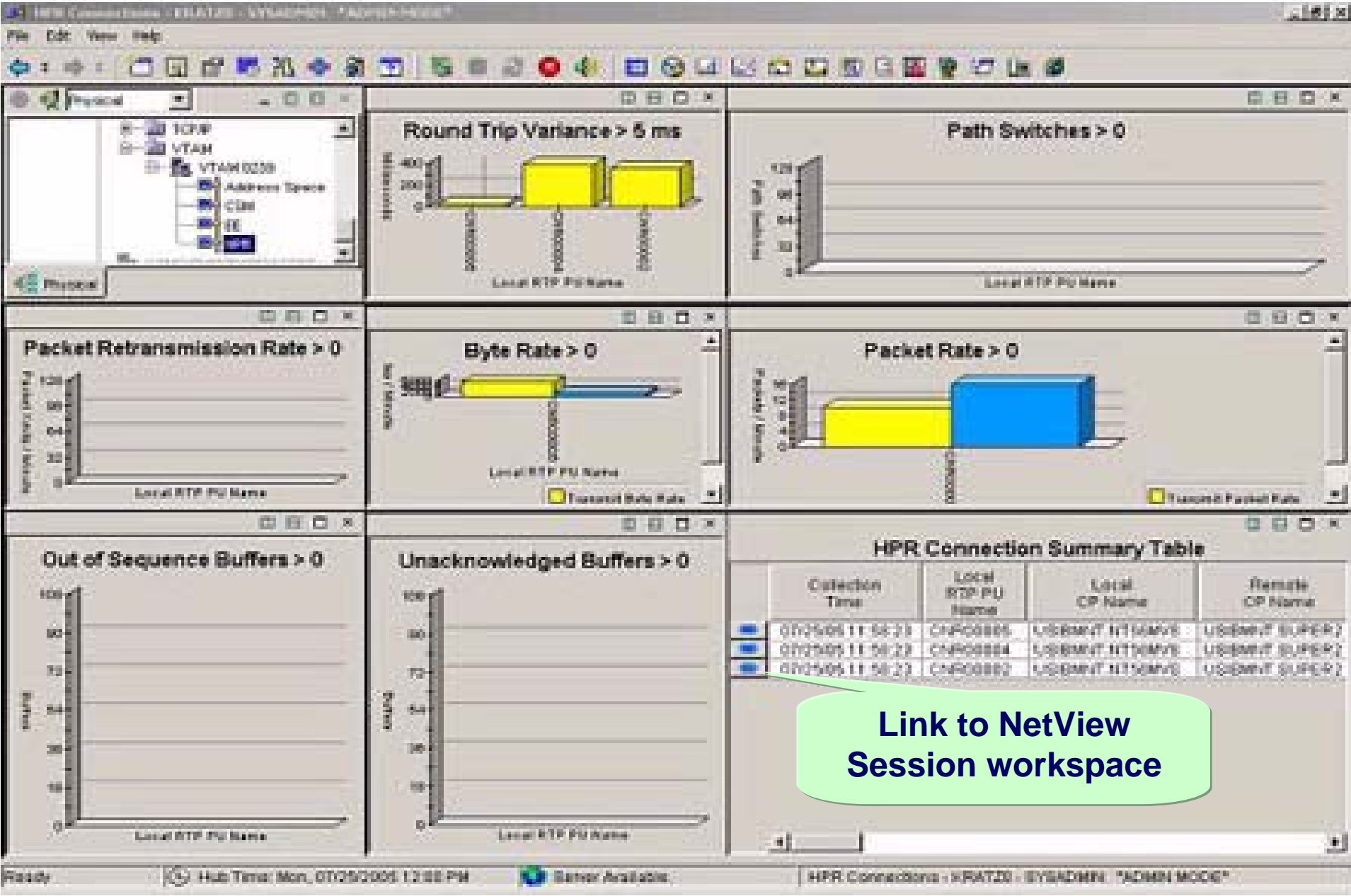
Top 10 Connections based on Retransmission Count

The second bar chart shows the top 10 connections based on retransmission counts. Retransmission counts greater than 5 often indicate a problem.

| Local IP Address | Local Port | Remote IP Address | Remote Port | Start Time | En | In | Out | Send Window Size | Count | Name | Spa | Nar |
|------------------|------------|-------------------|-------------|-------------------|-------------------|------|------|------------------|-------|-------|----------|-------------------------------|
| 196.42.38.5 | 1025 | 127.0.0.1 | 1024 | 03/22/05 06:41:21 | ***ACTIVE*** | 0 | 0 | | | TCPIP | | |
| 196.42.38.6 | 1024 | 127.0.0.1 | 1025 | 03/22/05 06:41:21 | 03/22/05 11:50:28 | 1095 | 1123 | 64240 | 5 | TCPIP | T520EENV | |
| 196.42.38.6 | 1024 | 127.0.0.1 | 1025 | 03/22/05 06:41:21 | 03/22/05 11:50:28 | 3224 | 4520 | 64240 | 0 | TCPIP | T520EENV | 006918D8 00000F6000000000 N/A |
| 196.42.38.6 | 1024 | 127.0.0.1 | 1025 | 03/22/05 11:57:42 | 03/22/05 11:57:42 | 2847 | 3453 | 65535 | 0 | TCPIP | CANSHBN3 | 006BE940 00000F7000000000 N/A |
| 196.42.38.6 | 1024 | 127.0.0.1 | 1025 | 03/22/05 12:07:19 | 03/22/05 12:07:19 | 3456 | 4095 | 65535 | 0 | TCPIP | CANSHBN3 | 0069BCFE 00000F9000000000 N/A |
| 196.42.38.6 | 1024 | 127.0.0.1 | 1025 | 03/22/05 12:18:44 | 03/22/05 12:18:44 | 3245 | 3985 | 32768 | 4 | TCPIP | T520EENV | 006845BC 00000BF800000000 N/A |

Server Available Enterprise Status - nobody.nowhere.ibm.com - SYSADMIN

The link in the NetView TCP/IP Connection Data table will take you to the OMEGAMON MFN TCP/IP Connection Data workspace.



Session Data Workspace



SESSION DATA - 9.82.38.42 - SYSADMIN

File Edit View Help

NetView-MFN View

NetView-MFN View

- TCP/IP
- VTAM
- NetView for z/OS - HASL125_HCEN5:KWW00
 - DVIPA Connections
 - DVIPA Definition and Status
 - DVIPA Distributed Targets
 - DVIPA Sysplex Distributors
 - Formatted Packet Trace
 - NetView Audit Log
 - NetView Command Response
 - NetView Log
 - Session Data
 - TCPIP Connection Data

Physical NetView-MFN View

Sessions Starting Over Time

Time Interval

- 09/29/05 18:46:29
- 10/09/05 13:20:27
- 10/16/05 22:37:54
- 10/22/05 07:56:23
- 10/28/05 17:12:52
- 11/04/05 02:30:21
- 11/10/05 11:47:49
- 11/16/05 21:05:17
- 11/23/05 06:22:46

■ Successful Sessions
■ Sessions with Sense Codes

The Stacked Bar chart shows how many sessions terminated with abnormal sense codes against the total successful terminations over time.

| Primary Name | Party Ty | Start Time | End Time | Secondary Name | Secondary Domain | DLUS DLUR | Se |
|---------------|----------|---------------------|----------|-------------------|------------------|----------------------|-------------|
| USIBMWZV.H... | SSCP | 11/29/2005 15:18:11 | ACTIVE | USIBMWZV.HCEN500F | LU | USIBMWZV.HSLV12.E... | HCEN5 HCEN5 |
| USIBMWZV.H... | SSCP | 11/29/2005 15:18:11 | ACTIVE | USIBMWZV.HCEN500C | LU | USIBMWZV.HSLV12.E... | HCEN5 HCEN5 |
| USIBMWZV.H... | SSCP | 11/29/2005 15:18:11 | ACTIVE | USIBMWZV.HCEN500D | LU | USIBMWZV.HSLV12.E... | HCEN5 HCEN5 |
| USIBMWZV.H... | SSCP | 11/29/2005 15:18:11 | ACTIVE | USIBMWZV.HCEN5008 | LU | USIBMWZV.HSLV12.E... | HCEN5 HCEN5 |
| USIBMWZV.H... | SSCP | 11/29/2005 15:18:11 | ACTIVE | USIBMWZV.HCEN500B | LU | USIBMWZV.HSLV12.E... | HCEN5 HCEN5 |
| USIBMWZV.H... | SSCP | 11/29/2005 15:18:11 | ACTIVE | USIBMWZV.HCEN5009 | LU | USIBMWZV.HSLV12.E... | HCEN5 HCEN5 |
| USIBMWZV.H... | SSCP | 11/29/2005 15:18:11 | ACTIVE | USIBMWZV.HCEN5007 | LU | USIBMWZV.HSLV12.E... | HCEN5 HCEN5 |
| USIBMWZV.H... | SSCP | 11/29/2005 15:18:11 | ACTIVE | USIBMWZV.HCEN5006 | LU | USIBMWZV.HSLV12.E... | HCEN5 HCEN5 |
| USIBMWZV.H... | SSCP | 11/29/2005 15:18:11 | ACTIVE | USIBMWZV.HCEN5005 | LU | USIBMWZV.HSLV12.E... | HCEN5 HCEN5 |
| USIBMWZV.H... | SSCP | 11/29/2005 15:18:11 | ACTIVE | USIBMWZV.HCEN5001 | LU | USIBMWZV.HSLV12.E... | HCEN5 HCEN5 |
| USIBMWZV.H... | SSCP | 11/29/2005 15:18:11 | ACTIVE | USIBMWZV.HCEN5003 | LU | USIBMWZV.HSLV12.E... | HCEN5 HCEN5 |
| USIBMWZV.H... | SSCP | 11/29/2005 15:18:11 | ACTIVE | USIBMWZV.HCEN5000 | LU | USIBMWZV.HSLV12.E... | HCEN5 HCEN5 |
| USIBMWZV.H... | SSCP | 11/29/2005 15:18:11 | ACTIVE | USIBMWZV.HCEN5004 | LU | USIBMWZV.HSLV12.E... | HCEN5 HCEN5 |
| USIBMWZV.H... | SSCP | 11/29/2005 15:18:11 | ACTIVE | USIBMWZV.HCEN5002 | LU | USIBMWZV.HSLV12.E... | HCEN5 HCEN5 |
| USIBMWZV.H... | SSCP | 11/29/2005 15:18:11 | ACTIVE | USIBMWZV.BNJHWMON | LU | USIBMWZV.HSLV12.E... | HCEN5 HCEN5 |

NetView for z/OS 5.2 Value Proposition

- Enterprise Interoperability and Integration
 - Share IP availability and performance data between NetView and OMEGAMON for Mainframe Networks
 - Service Desk Integration with leading trouble ticket providers (From NetView, open incident records, etc.)
 - Consolidate Events through Common Event Infrastructure for display and automation.
 - MSM Agent for ITM Data
- IP Management and Automation
 - TCP/IP packet tracing & formatting , intrusion detection, and TCP/IP connection management
 - SNMPv3 support and IPv6 capabilities
- Enhanced Operations Support
 - Automated Message Attribute Handling
 - Increased RODM capacity
- Accelerate time to value
 - Simplified style sheet migration and reporting

- **Interoperate with OMEGAMON, TSA, TBSM, and Trouble Ticket Products**
- **Richer TCP/IP Network Management**
- **Expanded Automation**
- **Manage growing Networks**
- **Improved Customer Time-to-Value**
- **Improved Ease of Use**



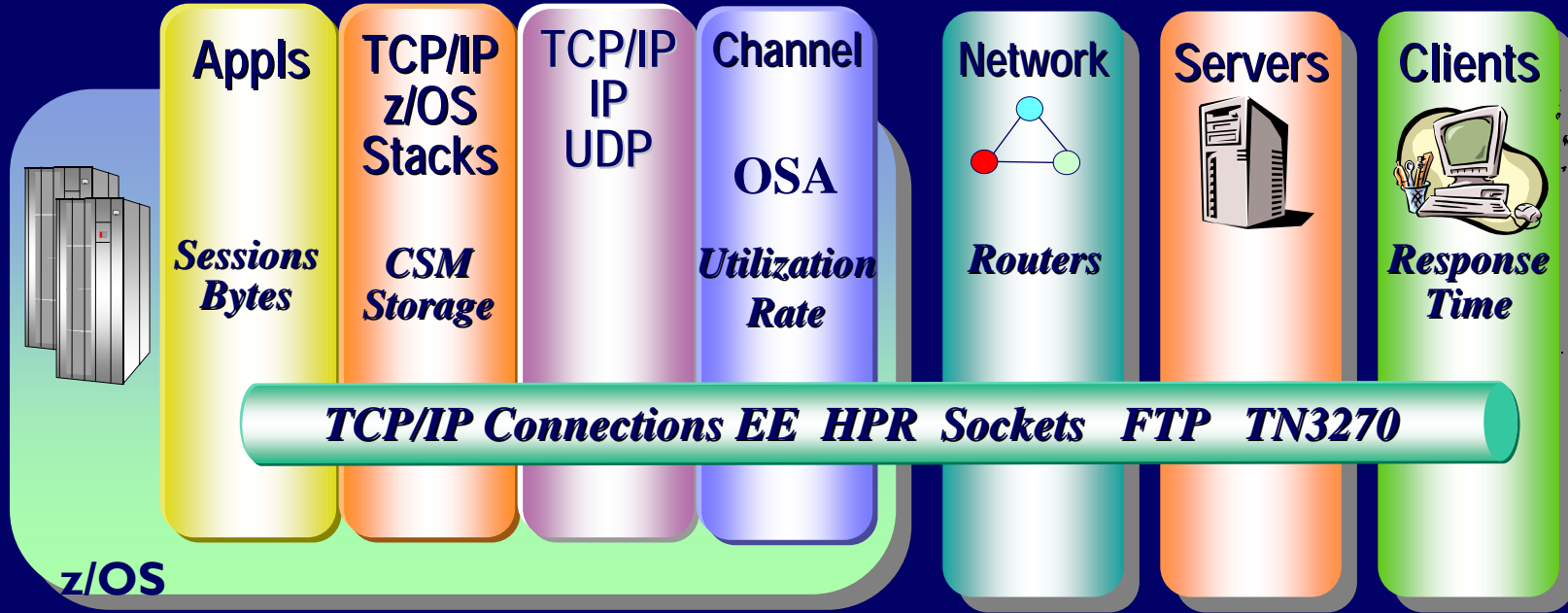
OMEGAMON XE for Mainframe Networks 3.1



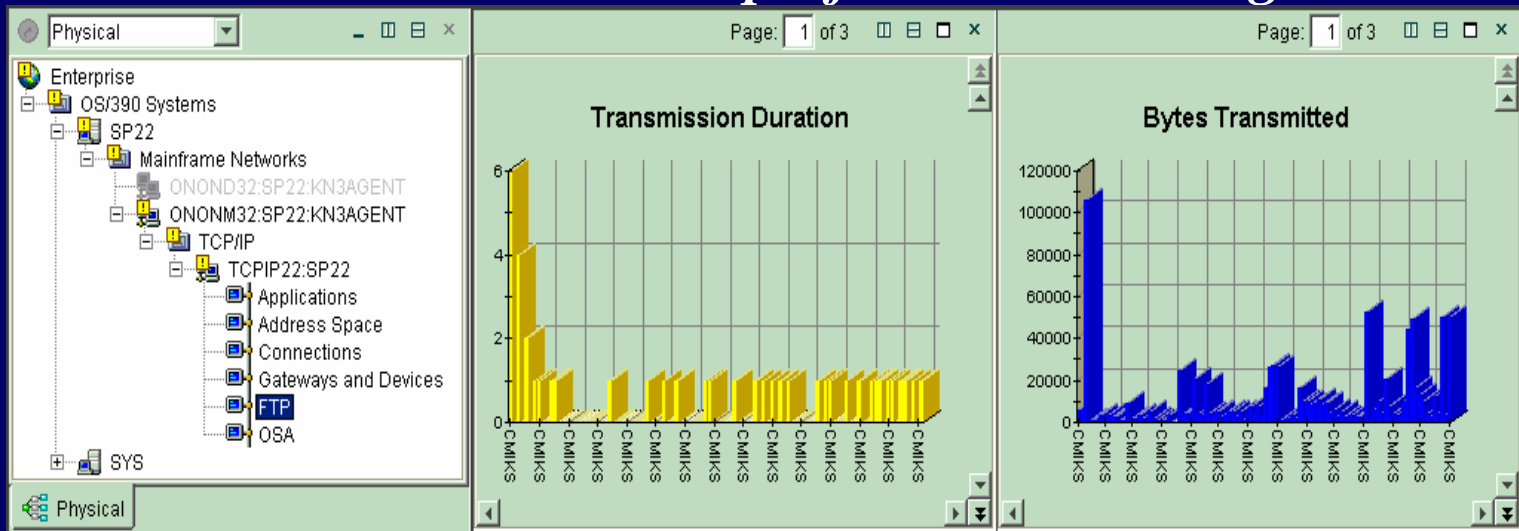
- IBM TCP/IP z/OS (Communications Server)
- FTP problems, failures, timeouts, hangs
- Unauthorized users doing large FTPs
- TCP/IP just slows down or hangs.
- Long problem resolution times for network problems
- Managing multiple z/OS IP stacks at once
- How to manage SNA over IP
 - (EE, HPR, TN3270)
- Channel problems – OSA Express
- TCP/IP tools do not understand the mainframe



IBM Network Performance Management



z/OS Oriented TCP/IP end to end performance management



- ✓ Fast
- ✓ Scalable
- ✓ Reliable

z/OS

IBM Tivoli OMEGAMON XE for Mainframe Networks

CS z/OS

VTAM API

TCP/IP API

SNMP

■ Collected using the z/OS Communications Server TCP/IP API:

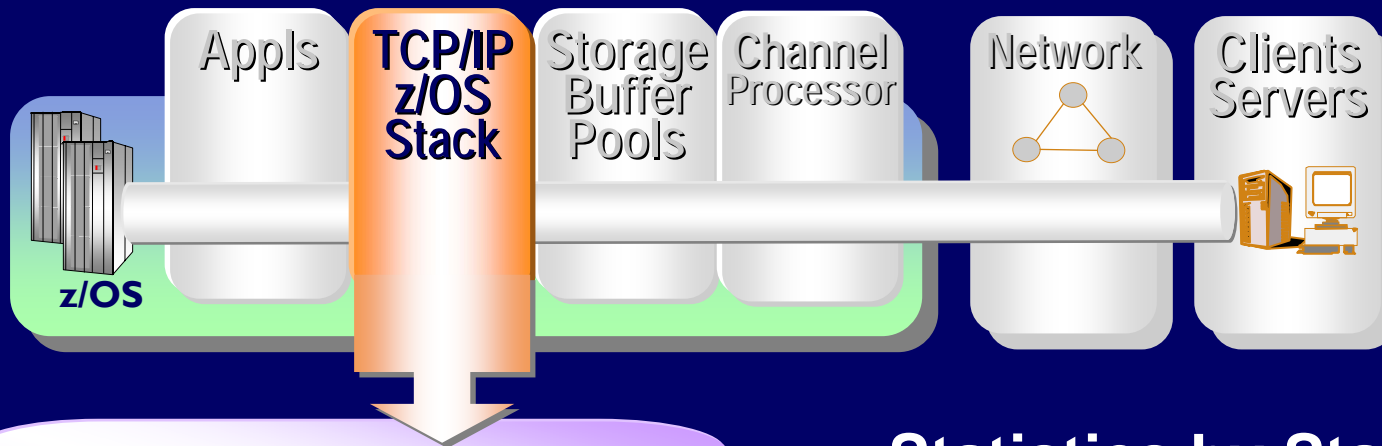
- Applications
- Connections including TCP Connections, TCP Listeners and UDP End Points
- FTP Sessions and Transfers
- TN3270 Server Sessions
- TCP/IP Memory Statistics

■ Collected using the z/OS Communications Server VTAM API:

- VTAM Summary
- CSM Buffer Pools
- Enterprise Extender connections (EE)
- High Performance Routing connections (HPR)

■ Collected using SNMP:

- TCP/IP Summary
- TCP/IP Stack Layers
- Gateways and Devices
- Interfaces
- OSA



Why is my TCP/IP stack running so slow?

- **Statistics by Stack**
- **Receive and Transmit rates**
- **Segment Errors**
- **Out of order errors**

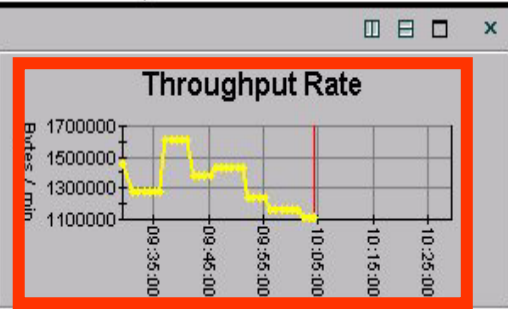
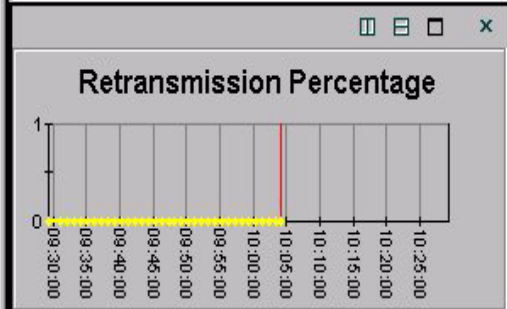
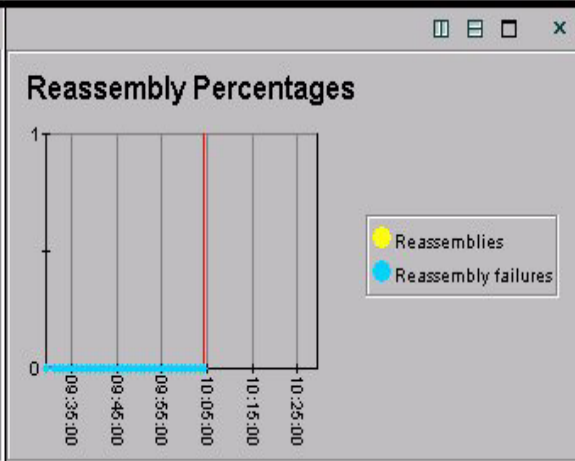
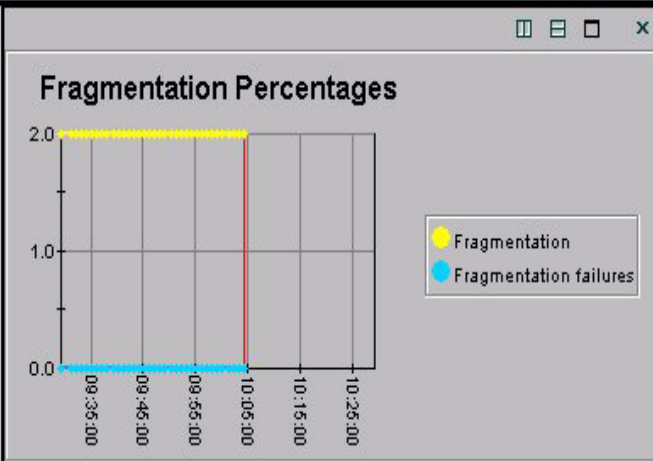
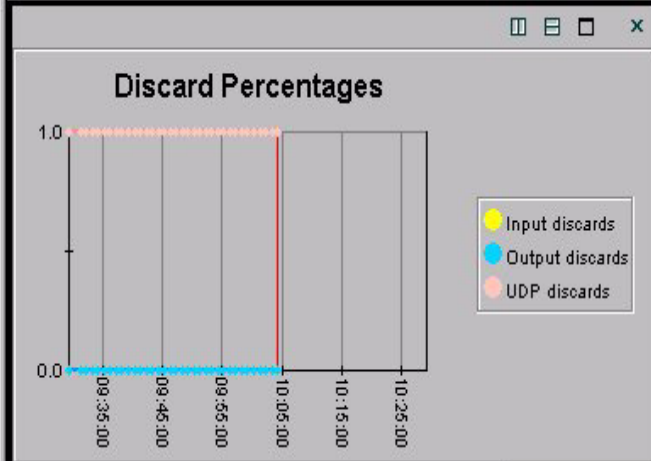
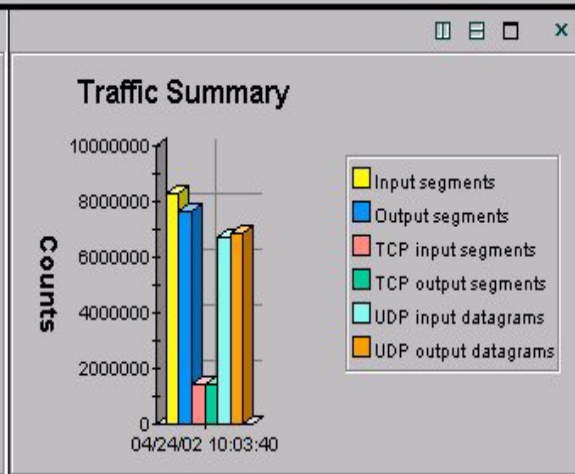
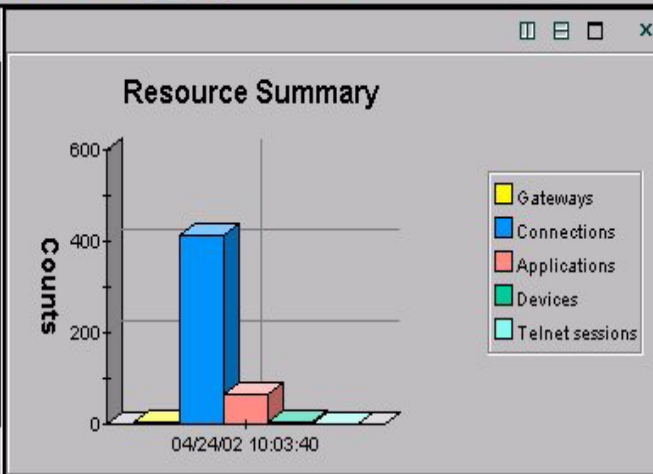
Detect Intermittent Problems



Physical

- ENTERPRISE
 - OS/390 Systems
 - SP22
 - Mainframe Networks
 - TCP/IP
 - TCPIP22.SP22**
 - Applications
 - Address Space
 - Current Connections
 - Gateways and Devices

Physical



TCPIP Summary Table

| Collection time | Collection interval | Host IP address | Gateway count | Connection count | Byte rate | A |
|-------------------|---------------------|-----------------|---------------|------------------|-----------|---|
| 04/24/02 10:03:40 | 5 | 198.210.51.158 | 6 | 413 | 1119100 | |

Erratic Response Time Highlighted



Connections Summary Table

| Application Name | Local Port | Foreign Socket | Byte Rate | Bytes In Last Sample | Bytes Out Last Sample | Datagram Rate | Datagrams In Last Sample | Datagrams Out Last Sample | Total Retransmits | Round Trip Time | R \ |
|------------------|------------|-----------------------|-----------|----------------------|-----------------------|---------------|--------------------------|---------------------------|-------------------|-----------------|-----|
| VFCTH@@L | 21326 | 198.210.51.158..2500 | 2414 | 9784 | 2288 | 0 | 0 | 0 | 0 | 1.10 | |
| PLDSOS6 | 26060 | *.* | 125 | 416 | 208 | 1 | 2 | 2 | 0 | 0.00 | |
| PLDSOS6 | 6199 | *.* | 10 | 24 | 24 | 1 | 2 | 2 | 0 | 0.00 | |
| PLDSOS6 | 6200 | *.* | 62 | 104 | 208 | 0 | 1 | 1 | 0 | 0.00 | |
| PLDSOS6 | 6203 | *.* | 62 | 104 | 208 | 0 | 1 | 1 | 0 | 0.00 | |
| VFCTH@@L | 21326 | 198.210.51.146..1030 | 306 | 1330 | 200 | 0 | 0 | 0 | 1 | 0.17 | |
| EDMQ030 | 7381 | *.* | 216 | 540 | 540 | 18 | 45 | 45 | 0 | 0.00 | |
| EDMQ030 | 7386 | *.* | 9160 | 41752 | 4048 | 18 | 45 | 45 | 0 | 0.00 | |
| EDMQ040 | 7396 | *.* | 2210 | 888 | 10164 | 4 | 10 | 10 | 0 | 0.00 | |
| EDMQ040 | 7399 | *.* | 2726 | 1152 | 12476 | 5 | 13 | 13 | 0 | 0.00 | |
| EDMQ040 | 7428 | *.* | 2210 | 888 | 10164 | 4 | 10 | 10 | 0 | 0.00 | |
| EDMQ030 | 7576 | *.* | 41 | 96 | 108 | 0 | 1 | 1 | 0 | 0.00 | |
| VCCTW@@L | 1044 | 198.210.51.174..21323 | 101356 | 31860 | 474922 | 0 | 0 | 0 | 183 | 0.24 | |
| CSC2SP22 | 1153 | *.* | 29 | 72 | 72 | 2 | 6 | 6 | 0 | 0.00 | |
| CSC2SP22 | 1169 | *.* | 266 | 720 | 612 | 2 | 6 | 6 | 0 | 0.00 | |
| CSC2SP22 | 1173 | *.* | 136 | 188 | 490 | 1 | 2 | 2 | 0 | 0.00 | |
| PLDSOS6 | 9621 | *.* | 341 | 0 | 1704 | 4 | 0 | 18 | 0 | 0.00 | |
| PLDSOS6 | 9622 | *.* | 341 | 0 | 1704 | 4 | 0 | 18 | 0 | 0.00 | |
| PLDSOS6 | 9788 | *.* | 341 | 0 | 1704 | 4 | 0 | 18 | 0 | 0.00 | |
| PLDSOS6 | 9789 | *.* | 341 | 0 | 1704 | 4 | 0 | 18 | 0 | 0.00 | |
| CSC2SP22 | 9975 | *.* | 190 | 184 | 764 | 1 | 2 | 2 | 0 | 0.00 | |
| VAN3@@@L | 10082 | *.* | 28800 | 130297 | 13703 | 79 | 198 | 198 | 0 | 0.00 | |
| MCMQB07 | 10123 | *.* | 9571 | 836 | 47020 | 12 | 9 | 49 | 0 | 0.00 | |
| BBOWEB40 | 3555 | 198.210.51.158..47275 | 298 | 308 | 1184 | 0 | 0 | 0 | 0 | 2.13 | |
| MCMQB07 | 47275 | 198.210.51.158..3555 | 298 | 1184 | 308 | 0 | 0 | 0 | 0 | 2.44 | |
| VFN3H@@L | 1196 | *.* | 28843 | 130301 | 13914 | 79 | 198 | 198 | 0 | 0.00 | |
| CSC2SP22 | 1200 | *.* | 190 | 184 | 764 | 1 | 2 | 2 | 0 | 0.00 | |
| VFONH@@L | 1203 | *.* | 144308 | 651995 | 69544 | 396 | 990 | 990 | 0 | 0.00 | |

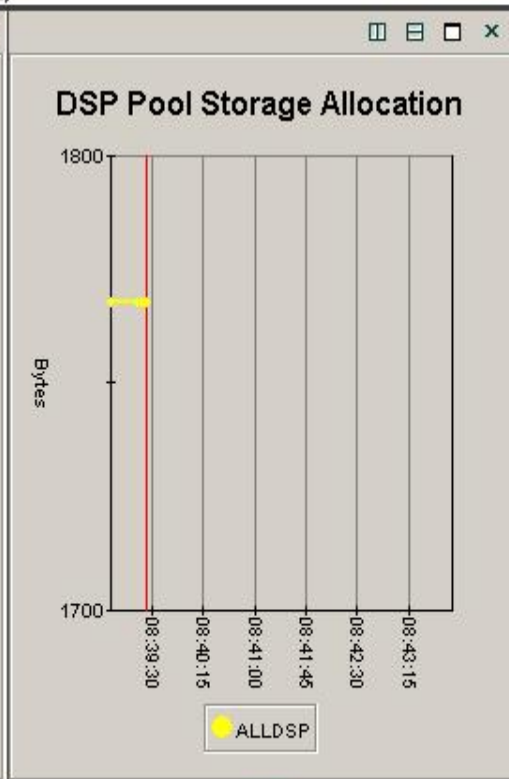
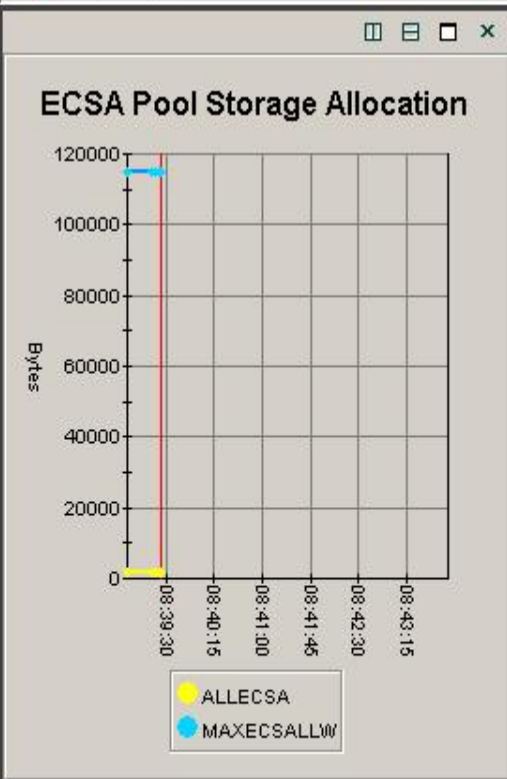
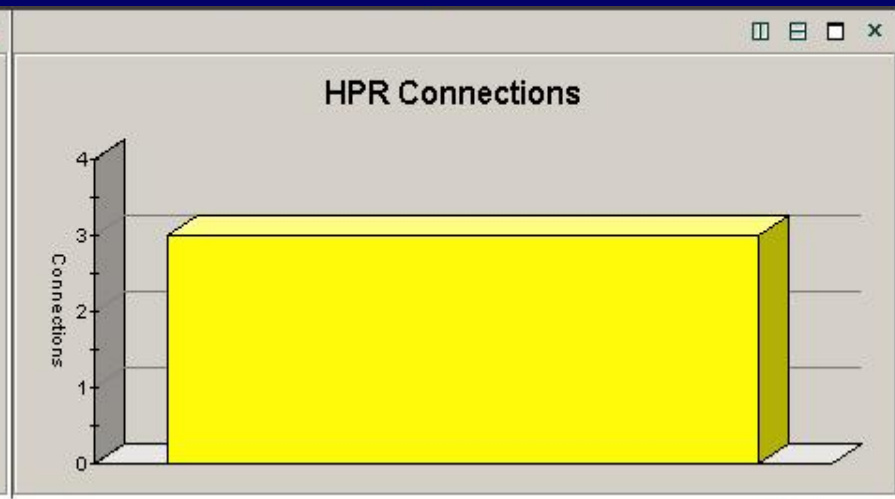
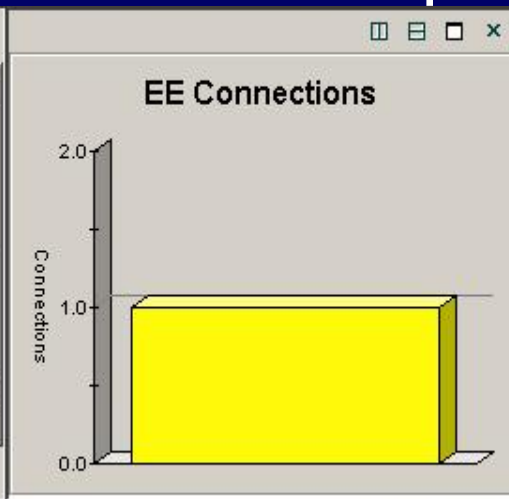
New VTAM Workspace



Physical

- Gateways and
- FTP
- OSA
- TCP/IP Memory
- TN3270 Server
- VTAM
 - :0239
 - VTAM:0239
 - CSM
 - EE
 - HPR

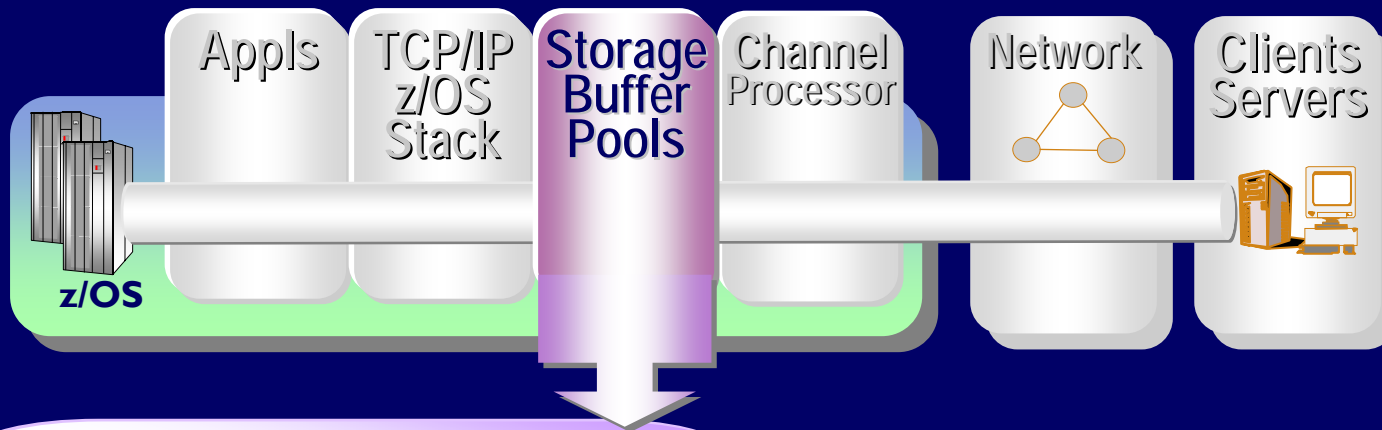
Physical



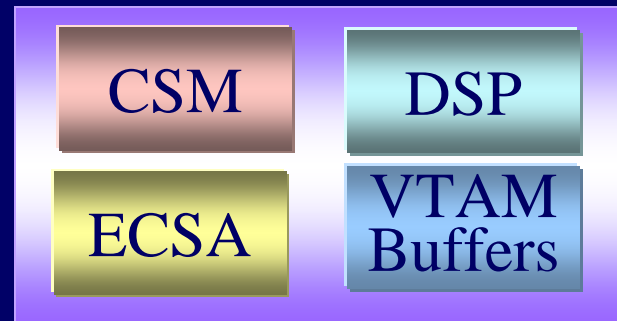
Table

| TIMESTAMP | EECONNCNT | HPRCONNCNT | ALLECSA | MAXECSALLW |
|------------------|-----------|------------|---------|------------|
| 1041206083824000 | 1 | 3 | 1959 | 1148 |

Storage and Buffer Pools



Is TCP/IP data backing up into my z/OS?



VTAM Storage



CSM Buffer Pools - kratz - SYSADMIN *ADMIN MODE*

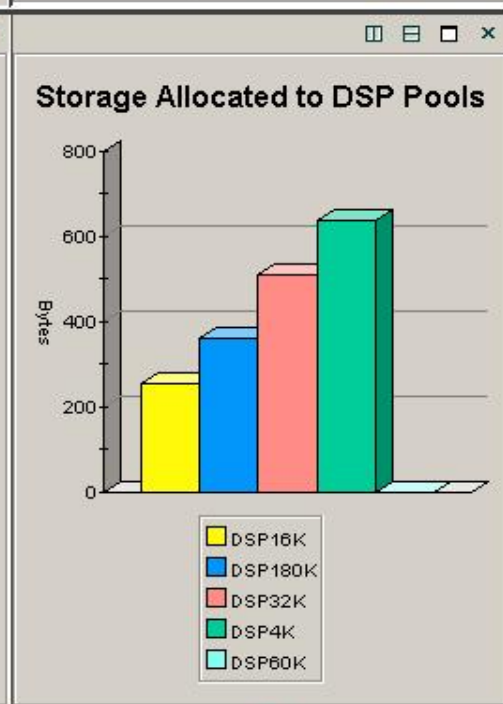
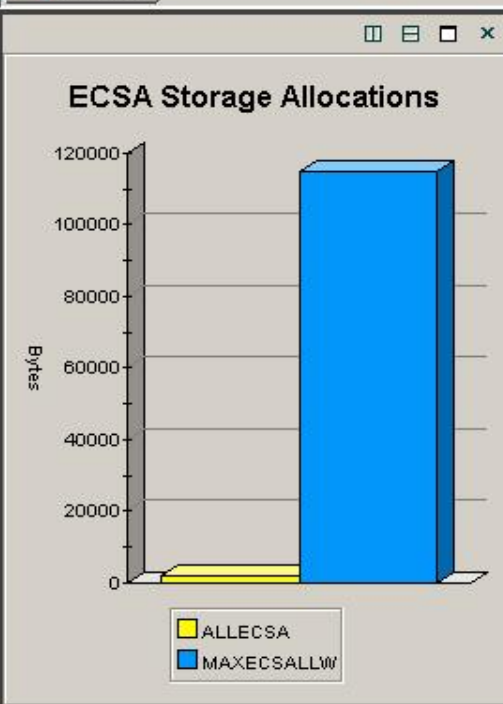
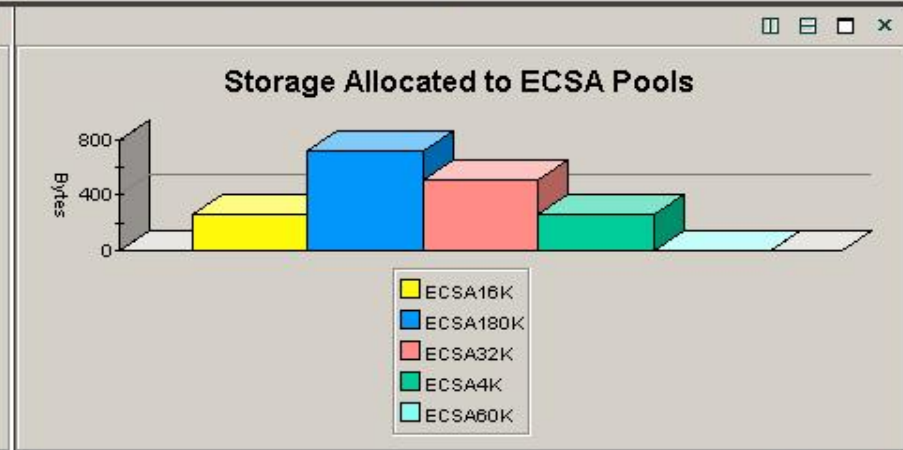
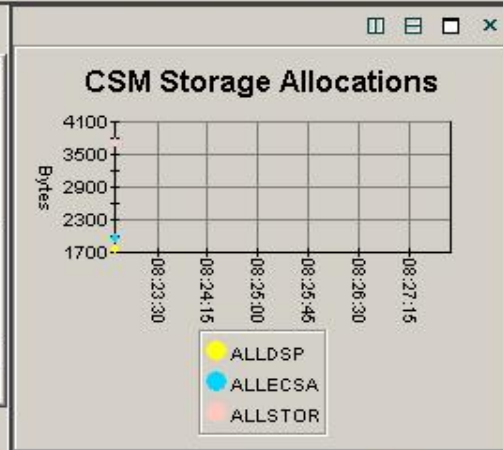
File Edit View Help



Physical

- Gateways and
- FTP
- OSA
- TCP/IP Memory
- TN3270 Server
- VTAM
 - :0239
 - VTAM:0239
 - CSM
 - EE
 - HPR

Physical



CSM Buffer Pool Summary

| TIMESTAMP | ALLECSA | MAXECSALLW | PCTECSA | ALLDSP | ALLSTOR |
|------------------|---------|------------|---------|--------|---------|
| 1041206082224000 | 1959 | 114894 | 1 | 1768 | 37 |

Ready

Hub Time: Mon, 12/06/2004 08:22 AM

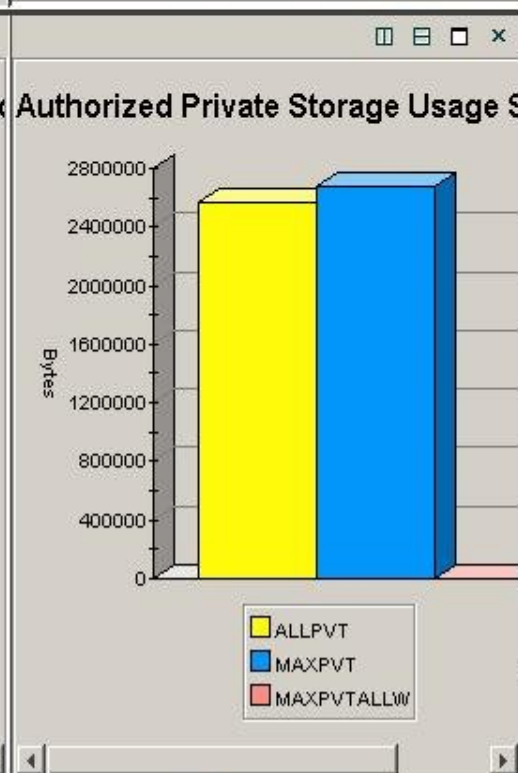
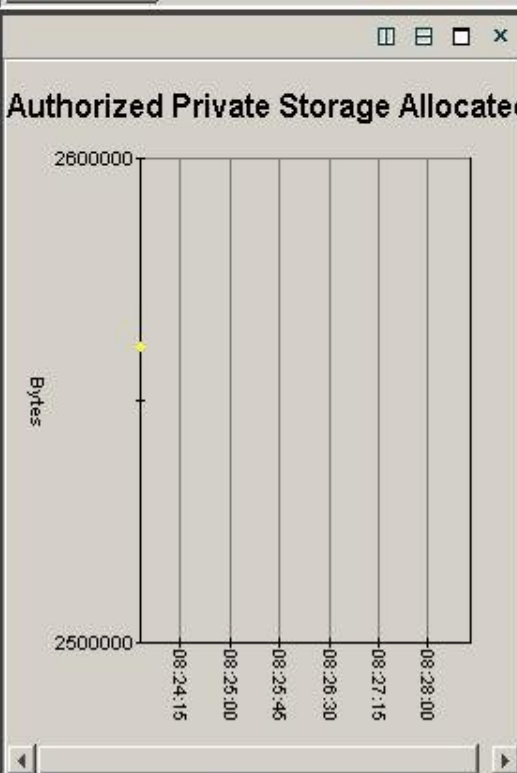
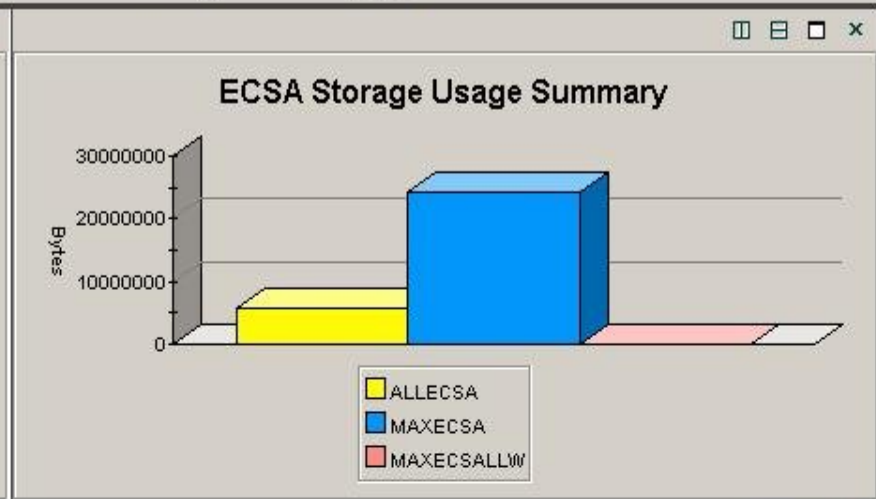
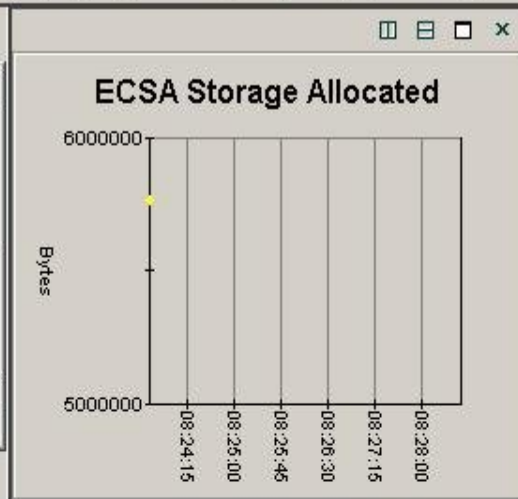
Server Available.

CSM Buffer Pools - kratz - SYSADMIN *ADMIN MODE*

TCP/IP Memory

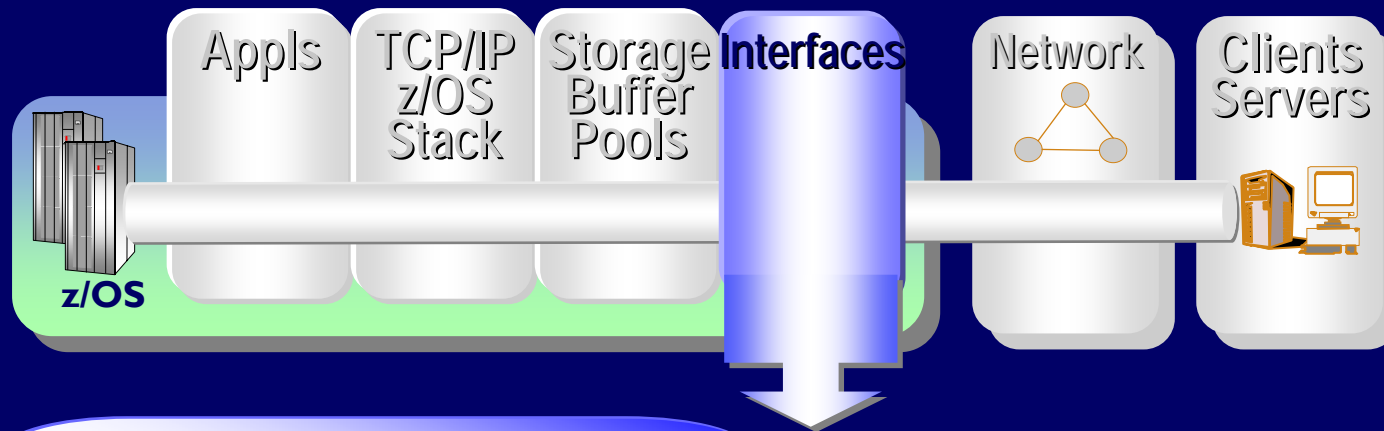
Physical

- Gateways and U...
- FTP
- OSA
- TCP/IP Memory
- TN3270 Server S...
- VTAM
 - :0239
 - VTAM:0239
 - CSM
 - EE
 - HPR



TCP/IP Memory Statistics Summary

| PCTECSA | ALLECSA | ALLPVT | TIMESTAMP | IPADDRESS | MAXECSA |
|---------|---------|---------|------------------|---------------|---------|
| 0 | 5764016 | 2561024 | 1041206082224000 | 192.168.1.142 | 243248 |



What is the performance of my channels?

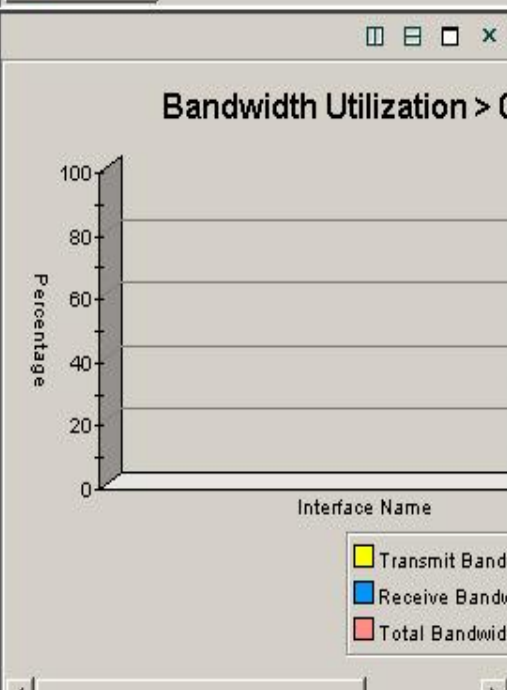
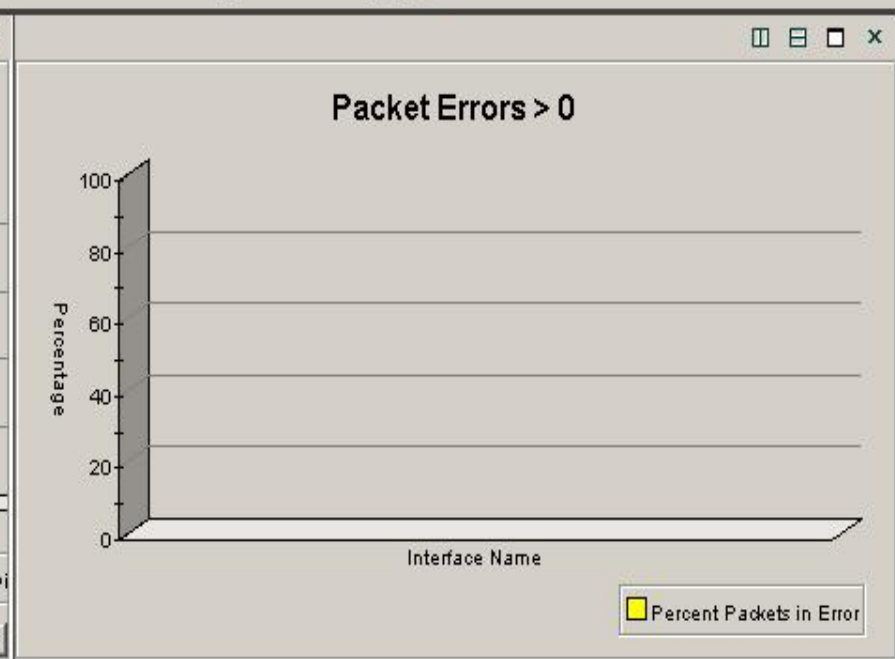
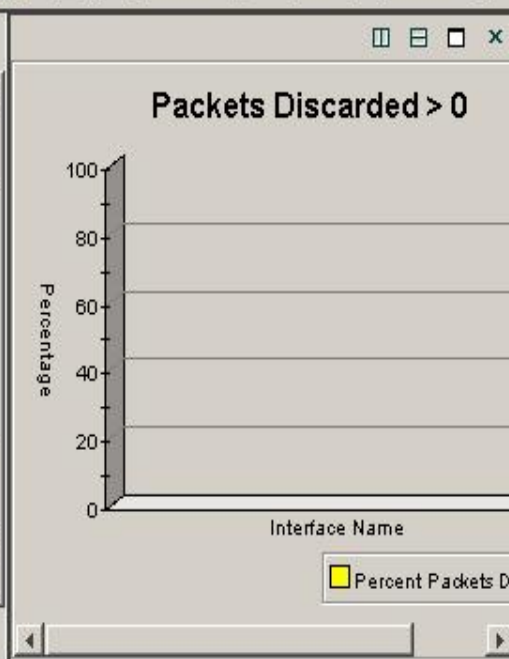
- Current Status
- MTU
- Transmission Rates
- Bandwidth utilization
- Error Rates

Interfaces

Physical

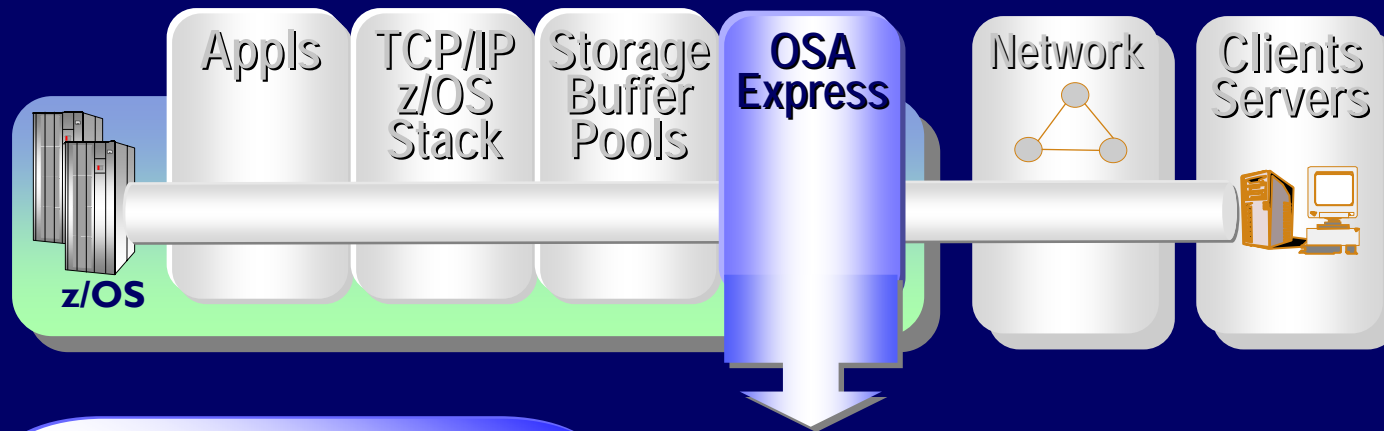
- CAN3210:0239:KN3AGEN
- CAN3310:0239:KN3AGEN
 - TCP/IP
 - TCPIP:0239
 - Applications
 - Address Space
 - Connections
 - Gateways and I
 - FTP
 - Interfaces**
 - OSA
 - TCP/IP Memory
 - TCP/IP Stack L
 - TN3270

Physical



Interfaces Summary Table

| Collection Time | Interface Name | Description | Interface Type | Physical Address | Current State | Time Entered Current State |
|-------------------|----------------|-------------------------------------|------------------|------------------|---------------|----------------------------|
| 03/31/05 09:48:21 | LOOPBACK | Loopback Device | propVirtual | | Up | 03/30/05 13:56:4 |
| 03/31/05 09:48:21 | LOOPBACK | Loopback | softwareLoopback | | Up | 03/30/05 13:56:4 |
| 03/31/05 09:48:21 | IUTSAMEH | MultiProtoCol Point-to-Point Device | propVirtual | | Up | 03/30/05 13:56:4 |
| 03/31/05 09:48:21 | TOVTAM | MultiProtoCol Point-to-Point | mpc | | Up | 03/30/05 13:56:4 |
| 03/31/05 09:48:21 | VDEV1 | Virtual IP Address Device | propVirtual | | Up | 03/30/05 13:56:4 |
| 03/31/05 09:48:21 | VLINK1 | Virtual IP Address Link | virtualIpAddress | | Up | 03/30/05 13:56:4 |
| 03/31/05 09:48:21 | TCPIPCTC | Channel to channel Device | propVirtual | | Up | 03/30/05 13:56:4 |
| 03/31/05 09:48:21 | TCPIPLINK | Channel to channel (3088) | channel | | Up | 03/30/05 13:56:4 |



What is my OSA Express adapter utilization

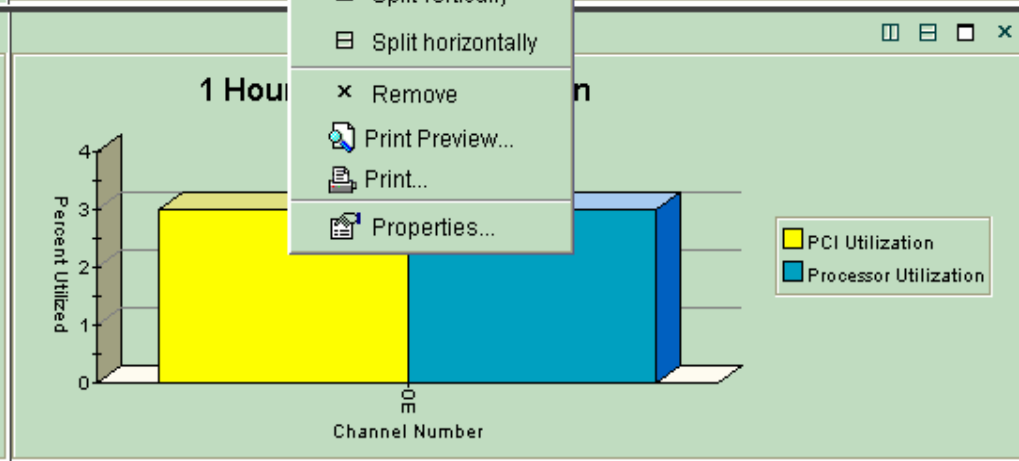
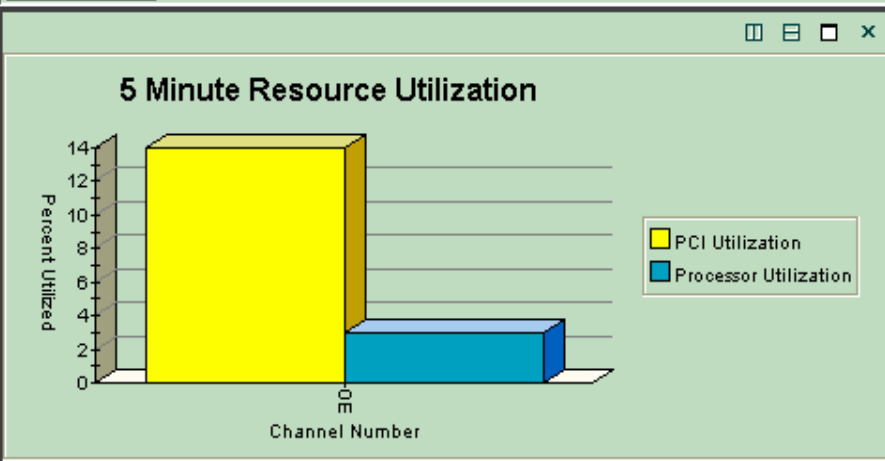
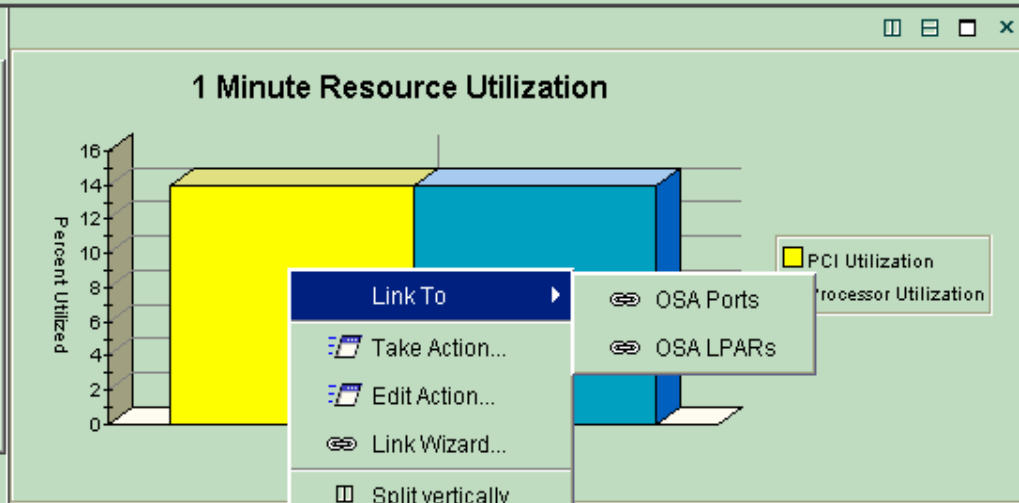
- Utilization
- Transmission Rates
- Mac address
- Channel ID
- Port Name
- Adapter capacity

OSA Express Performance



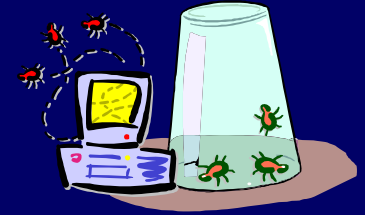
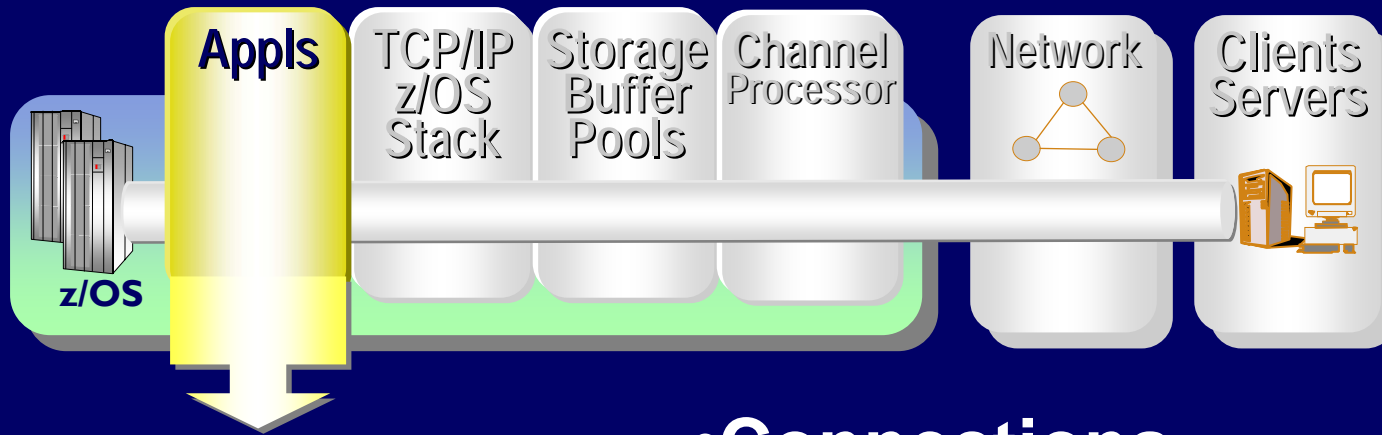
Physical

- Enterprise
 - OS/390 Systems
 - SP22
 - Mainframe Networks
 - ONOND32:SP22:KN3AGENT
 - ONONM32:SP22:KN3AGENT
 - TCP/IP
 - TCPIP22:SP22
 - Applications
 - Address Space
 - Connections
 - Gateways and Devices



OSA Express Channels Summary

| Device Name | Channel Number | Channel Type | Subtype | Mode | State | Share Indicator | Port Count | Control Unit Number | Micro Code Level | Current LPAR Name | Current LPAR Number |
|-------------|----------------|------------------|--------------|-------------------|--------|-----------------|------------|---------------------|------------------|-------------------|---------------------|
| OSAED | 0E | OSADirectExpress | FastEthernet | NothingConfigured | Online | Shared | 1 | 00A | 0329 | SP22 | 1077952576 |



What is wrong with my applications?

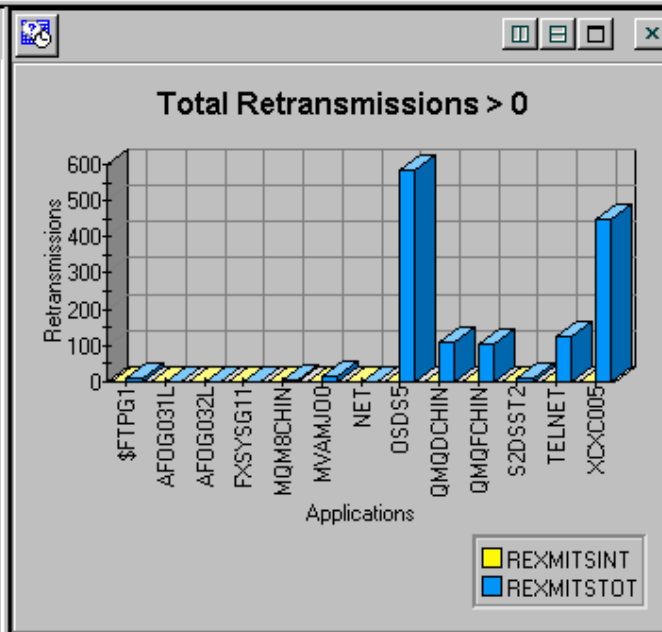
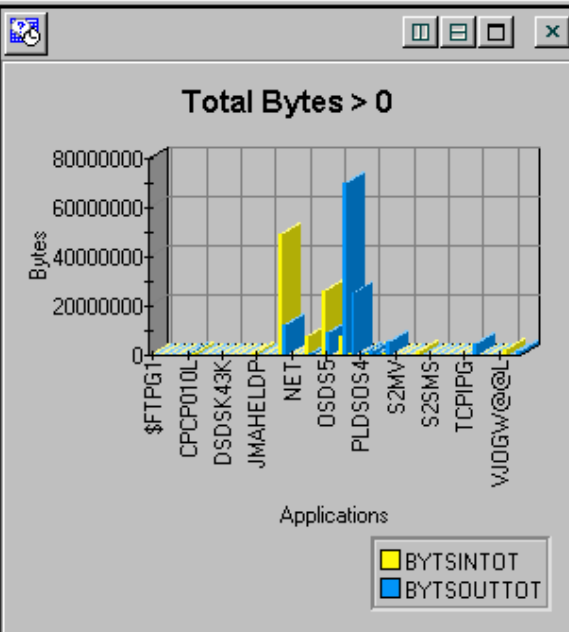
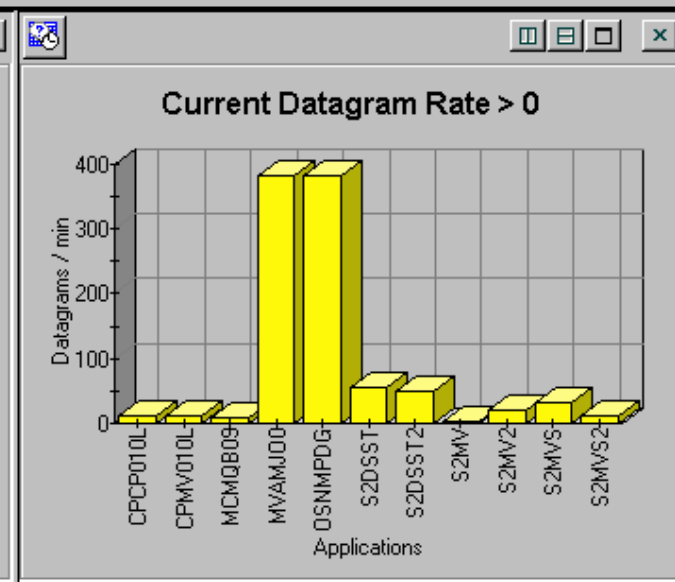
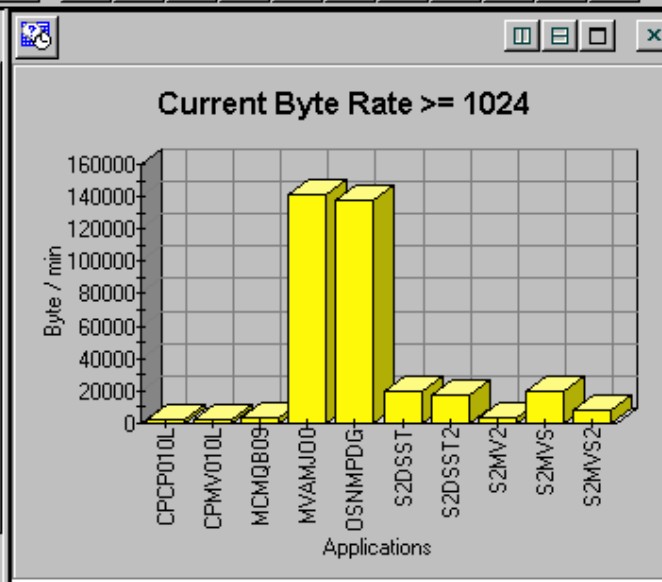
- **Connections**
 - State, Rate, Backlog, Rejections
- **Last activity time**
- **Window Sizes**
- **Response Times**
- **Retransmissions**
- **Transmit / Receive Rates**
- **Out of order segments**

Applications TCP/IP Performance

ENTERPRISE

- OS/390 Systems
 - SYSG
 - Mainframe Networks
 - TCP/IP
 - TCPIPG:SYSG
 - Application Names
 - Address Space
 - Current Connections
 - Gateways and Devices
- Windows Systems
 - DELL
 - RSMIT-HOME

Physical



Applications Summary Table

| TIMESTAMP | APPLNAME | BYTERATE | BYTSIN |
|------------------|----------|----------|--------|
| 1020206124308010 | \$FTPG1 | 28 | |
| 1020206124308016 | AFOG031L | 0 | |
| 1020206124308007 | AFOG032L | 0 | |
| 1020206124307999 | AU320#7 | 0 | |
| 1020206124308009 | CPCP010L | 2701 | |
| 1020206124308009 | CPMV010L | 2677 | |
| 1020206124308006 | DFDSM32 | 0 | |
| 1020206124308004 | DFDSM34 | 0 | |
| 1020206124308008 | DSDSK43K | 0 | |
| 1020206124307996 | FXSYSG10 | 0 | |
| 1020206124307996 | FXSYSG11 | 0 | |
| 1020206124308010 | INETD4 | 0 | |
| 1020206124308006 | JMAHELDP | 0 | |
| 1020206124307997 | MCMQB09 | 4056 | |

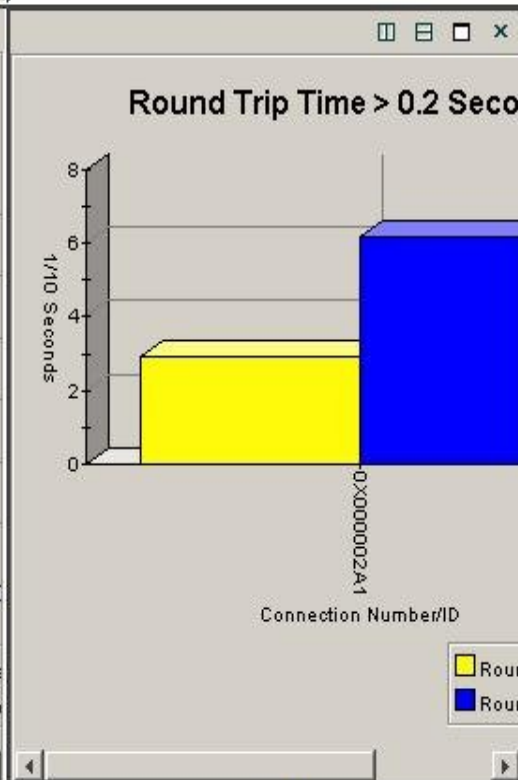
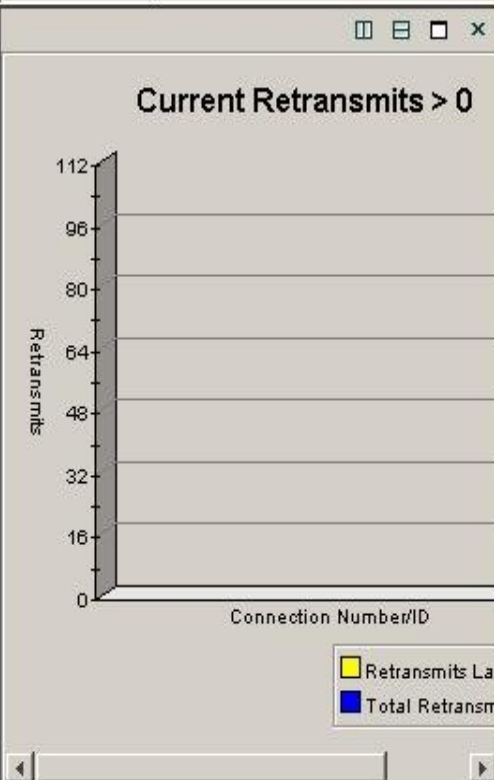
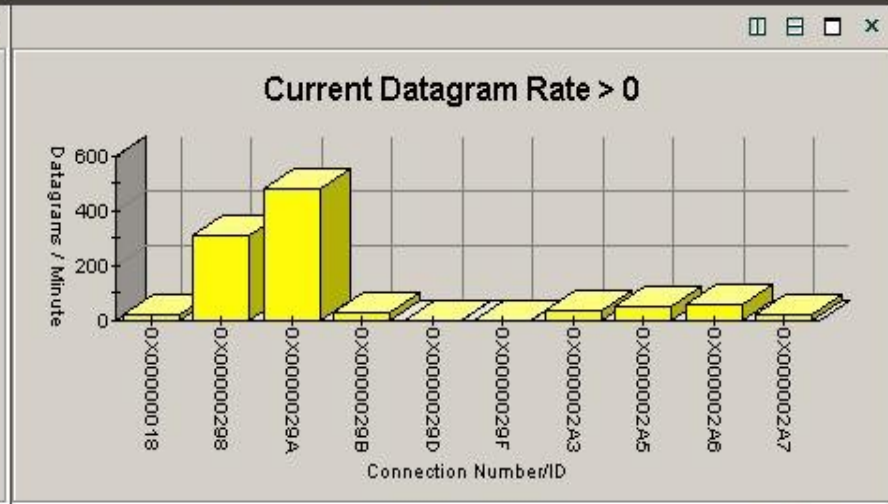
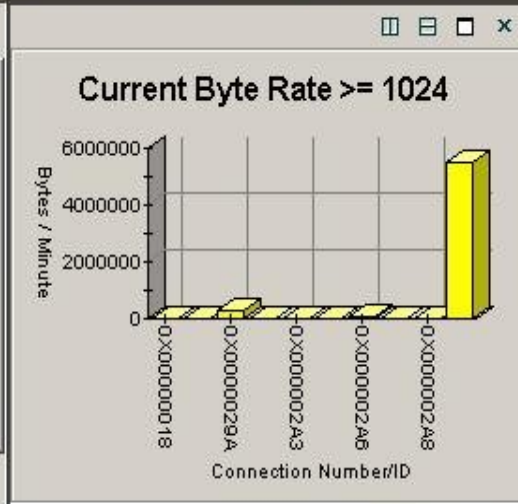
TCP/IP Connections



Physical

- 0239
 - Mainframe Networks
 - CANSN3:0239:KN3AGEN
 - CANSN331:0239:KN3AG
 - TCP/IP
 - TCPIP:0239
 - Applications
 - Address Spac
 - Connections**
 - Gateways and
 - FTP

Physical

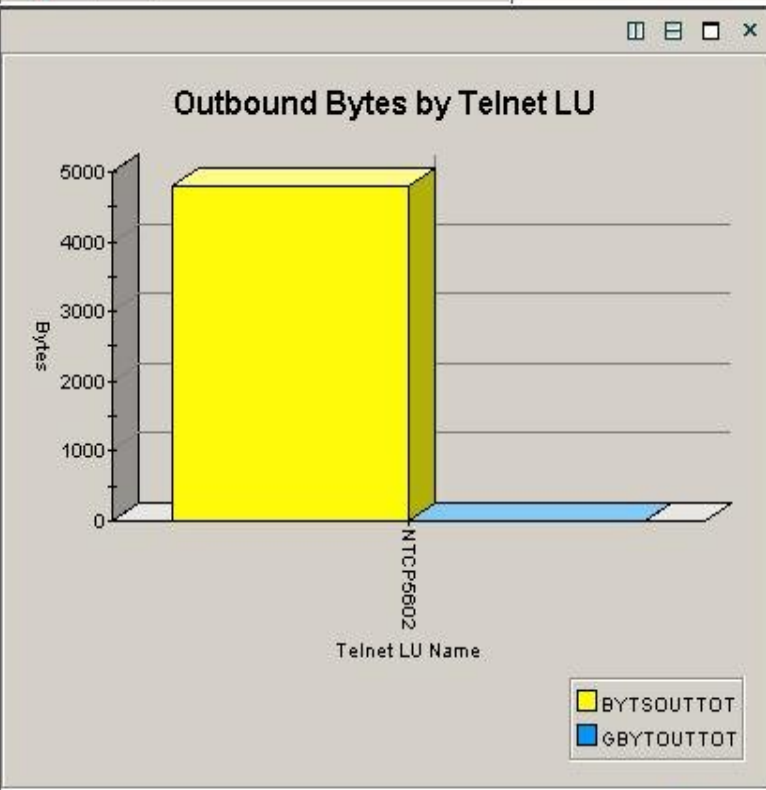
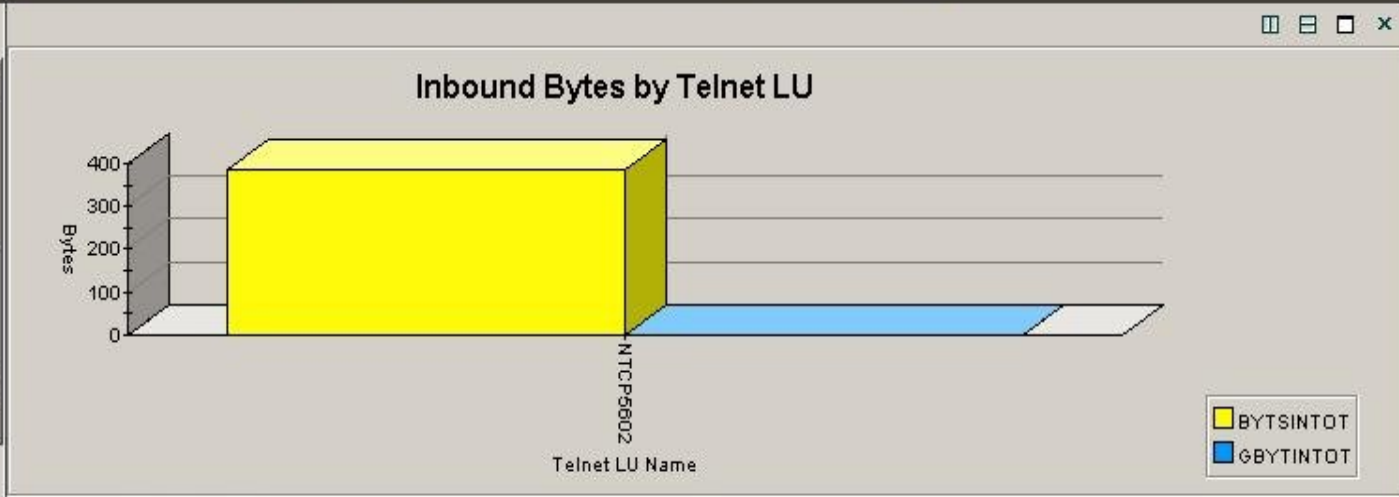


Connections Summary Table

| Collection Time | Application Name | UDP Flag | Local Port | Foreign Soc |
|-------------------|------------------|----------------|------------|-----------------|
| 12/07/04 11:12:37 | VTAM | UDP_Endpoint | 12000 | |
| 12/07/04 11:12:37 | VTAM | UDP_Endpoint | 12001 | |
| 12/07/04 11:12:37 | VTAM | UDP_Endpoint | 12002 | |
| 12/07/04 11:12:37 | VTAM | UDP_Endpoint | 12003 | |
| 12/07/04 11:12:37 | VTAM | UDP_Endpoint | 12004 | |
| 12/07/04 11:12:37 | TCPIP | TCP_Listener | 1024 | |
| 12/07/04 11:12:37 | TCPIP | TCP_Connection | 1025 | 127.0.0.1:102 |
| 12/07/04 11:12:37 | TCPIP | TCP_Connection | 1024 | 127.0.0.1:102 |
| 12/07/04 11:12:37 | TCPIP | TCP_Listener | 23 | |
| 12/07/04 11:12:37 | OSNMPD | UDP_Endpoint | 161 | 192.168.1.149:1 |
| 12/07/04 11:12:37 | OSNMPD | TCP_Listener | 1026 | |
| 12/07/04 11:12:37 | RXSERVE | TCP_Listener | 512 | |
| 12/07/04 11:12:37 | RXSERVE | TCP_Listener | 514 | |
| 12/07/04 11:12:37 | FTPD1 | TCP_Listener | 21 | |
| 12/07/04 11:12:37 | SNMPQE | UDP_Endpoint | 1027 | |
| 12/07/04 11:12:37 | SNMPQE | UDP_Endpoint | 162 | 192.168.1.149:1 |
| 12/07/04 11:12:37 | SNMPQE | TCP_Listener | 1027 | |

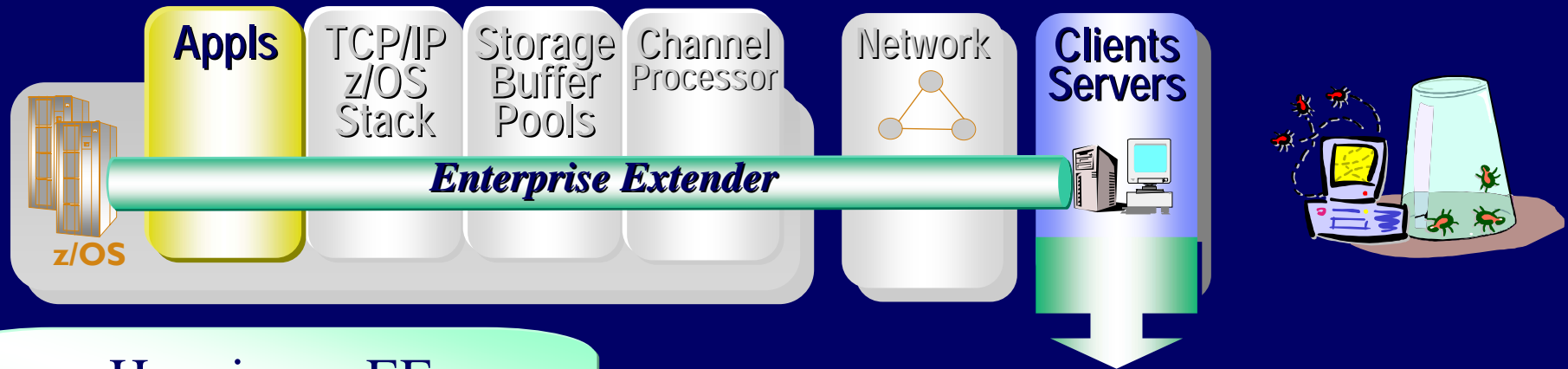
Physical

- Gateways and
- FTP
- OSA
- TCP/IP Memory
- TN3270 Server
- VTAM
 - :0239
 - VTAM:0239
 - CSM
 - EE
 - HPR



TN3270 Server Session Summary

| TIMESTAMP | LUNAME | SNALUNAME | REMOTEIP | LOCALIP | REMPORT | LOCALPORT |
|------------------|----------|-----------|---------------|---------------|---------|-----------|
| 1041206082436000 | NTCP5602 | NT56TSO2 | 192.168.0.121 | 192.168.1.149 | 0 | |
| 1041206082501000 | NTCP5602 | NT56TSO2 | 192.168.0.121 | 192.168.1.149 | 1112 | |



How is my EE performing?

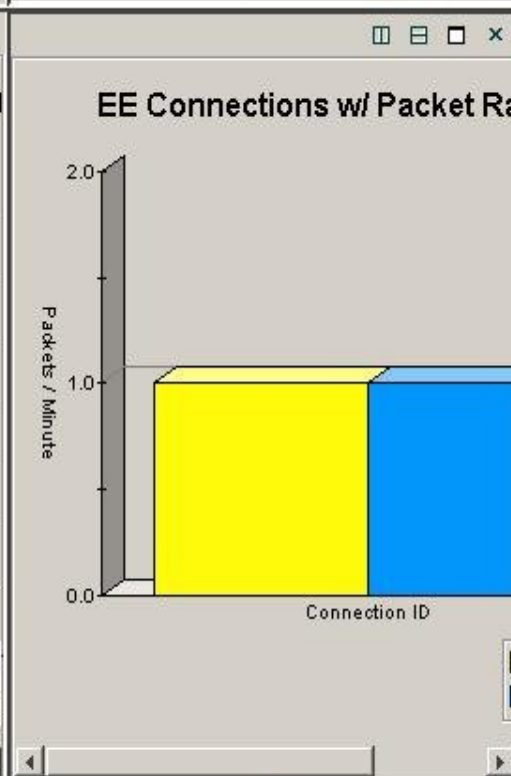
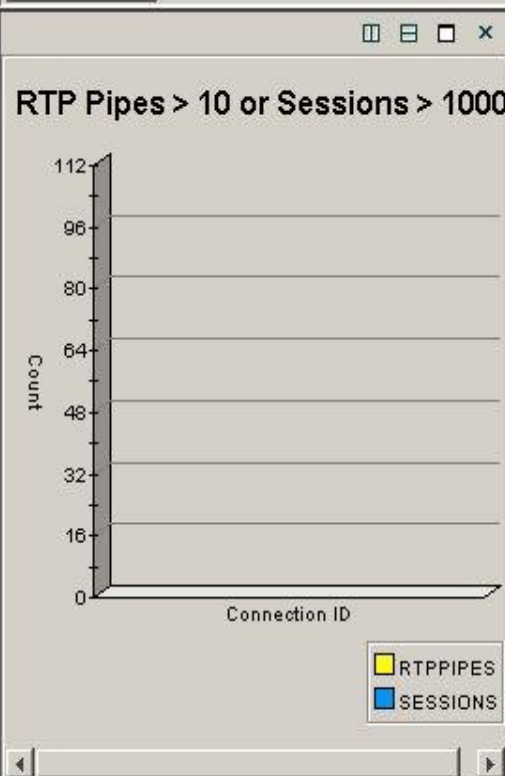
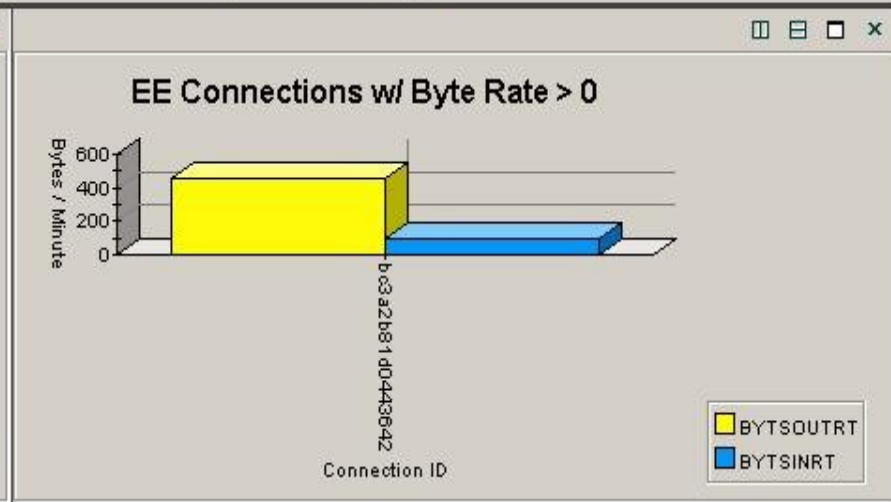
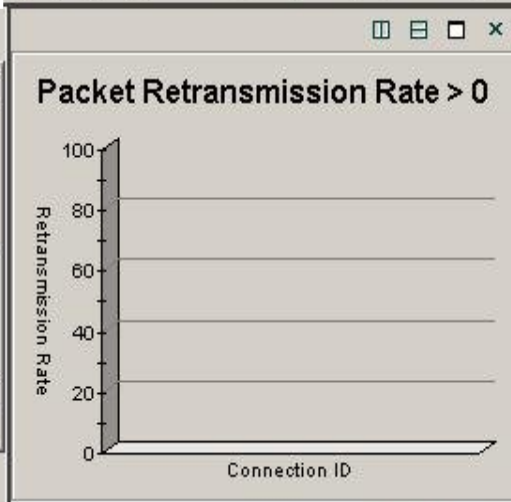
- **EE Analysis**
 - **Throughput Rates**
 - **Retransmission Rates**
 - **RTP Pipes**
 - **Sessions**
 - **Drill down to Port Details**
 - **Type of Service (TOS)**

Enterprise Extender



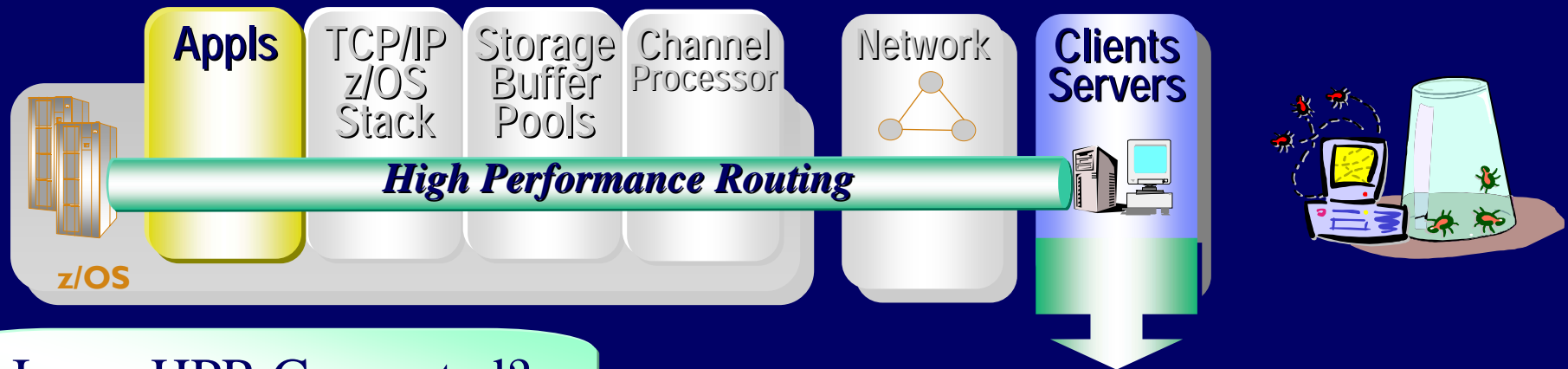
Physical

- Gateways and
- FTP
- OSA
- TCP/IP Memory
- TN3270 Server
- VTAM
 - :0239
 - VTAM:0239
 - CSM
 - EE
 - HPR



EE Connections Summary Table

| | TIMESTAMP | LOCALIP | REMOTEIP | RTPPIPES | SESSION |
|---|------------------|--------------|--------------|----------|---------|
| ⊞ | 1041206083624000 | 192.168.1.71 | 192.168.0.71 | 4 | |



Is my HPR Congested?

- **HPR Analysis**
 - Throughput Rates
 - Retransmission Rates
 - RTP Pipe congestion
 - Round trip time
 - Sessions, CPnames
 - Drill down to link Details
 - Class of Service

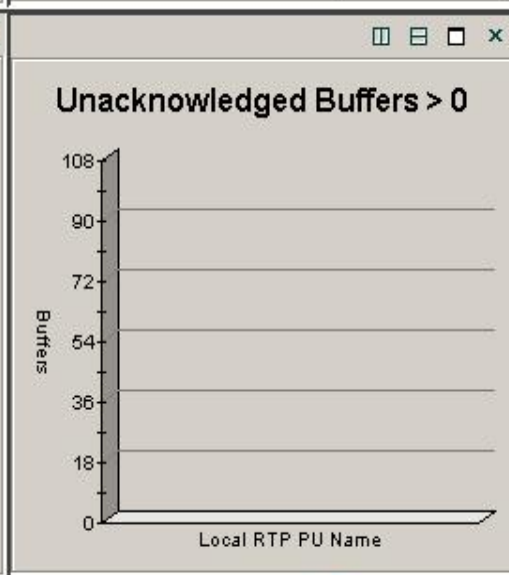
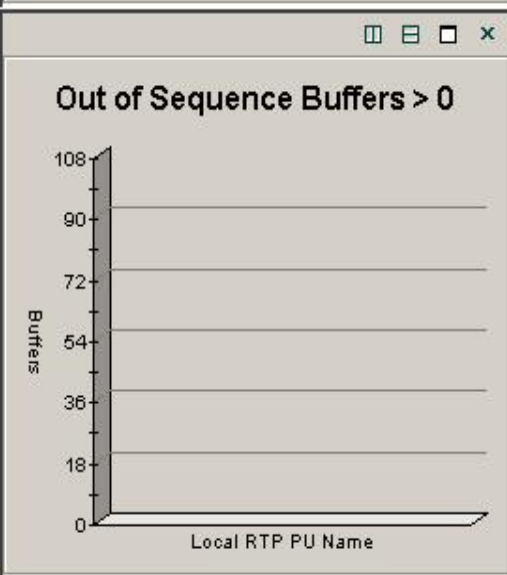
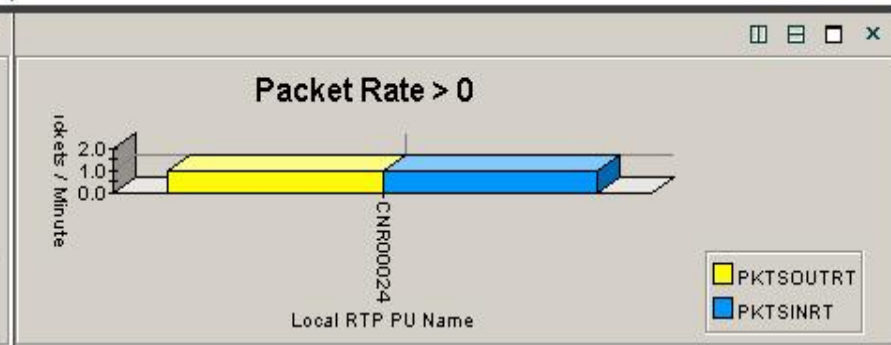
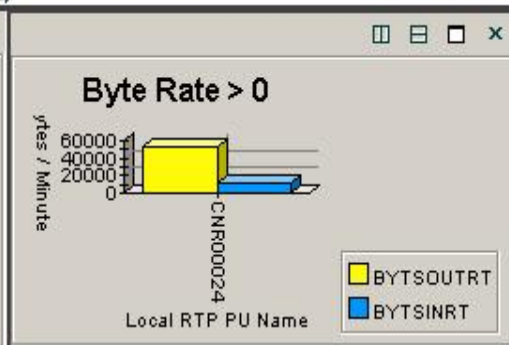
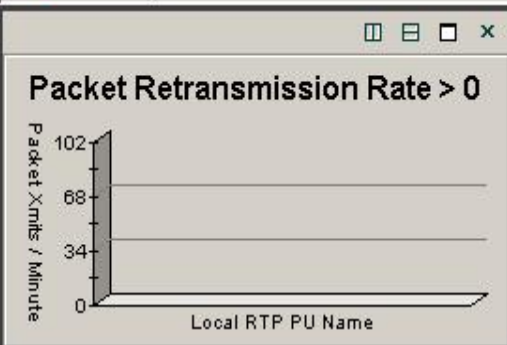
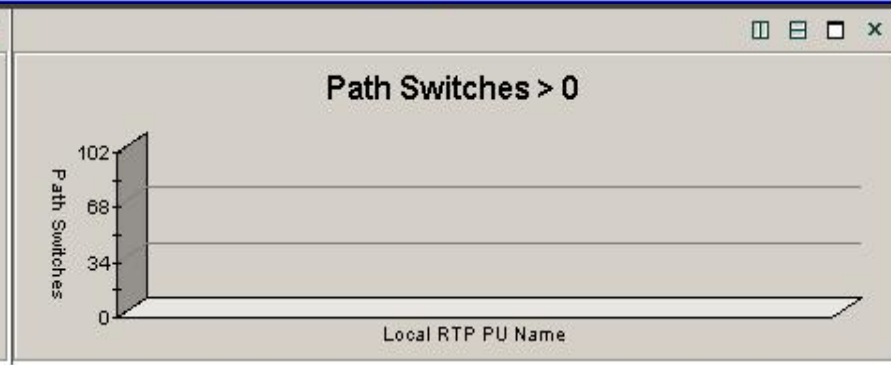
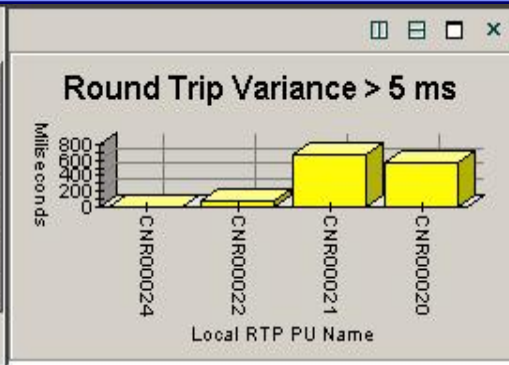
HPR Performance



Physical

- Gateways and
- FTP
- OSA
- TCP/IP Memory
- TN3270 Server
- VTAM

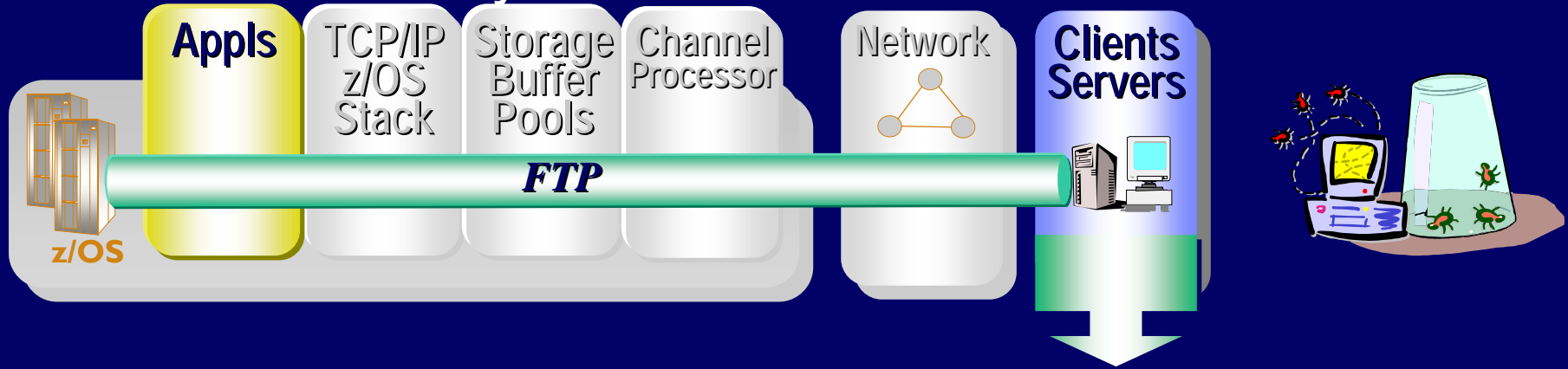
Physical



HPR Connection Summary Table

| ORIGINNODE | SYSID | TIMESTAMP | LOCRTPPU | LOCCPNAME |
|------------|-------|------------------|----------|-----------------|
| VTAM:0239 | 0239 | 1041206083624000 | CNR00024 | USIBMNT.NT56MVS |
| VTAM:0239 | 0239 | 1041206083624000 | CNR00022 | USIBMNT.NT56MVS |
| VTAM:0239 | 0239 | 1041206083624000 | CNR00021 | USIBMNT.NT56MVS |
| VTAM:0239 | 0239 | 1041206083624000 | CNR00020 | USIBMNT.NT56MVS |

FTP Analysis



Who is doing large FTPs during 1st shift?

- **FTP Analysis**
 - **Datasets names**
 - **By Bytes**
 - **By failures**
 - **Last command**
 - **Login Failure reason**
 - **Transmission Mode**
 - **By Application**

Why is my FTP performance so bad?



My Retransmissions are high!

| Total Retransmits | Round Trip Time | Round Trip Variance | Telnet Appl Name | Telnet LU Name | Idle Time | Connection Number |
|-------------------|-----------------|---------------------|------------------|----------------|-----------|-------------------|
| 63 | 16.16 | 11.82 | | TCP00041 | 14545 | 35221 |
| 18 | 8.44 | 2.45 | | | 91492 | 6087 |
| 16 | 7.09 | 3.19 | | | 91483 | 6083 |
| 0 | 3.26 | 1.12 | CICSACB2 | TCP00012 | 2203 | 42053 |

| Current Situation Values | | | | | | | | | | |
|--------------------------|-------------|-----------|-----------|----------------|-------------------|------------------|-----------------|------------|-----------------|-------------------|
| Response Time | Origin Node | System ID | Host Name | TCPIP STC Name | Collection Time | Application Name | Connection Type | Local Port | Foreign Socket | Connection Number |
| 15.19 | TCPIP:MVSA | MVSA | DEMOMVS | TCPIP | 08/18/05 11:17:12 | TCPIP | T | 23 | 9.65.80.29:3064 | 489003 |

OMEGAMON XE for Mainframe Networks provides:
 67 Situations out-of-the-box.
 16 of these situations are auto-started

| Connections Summary | | | | | | | |
|---------------------|-----------|------------|-------------------|-----------------------|-----------|--|---|
| Application Name | Conn Type | Local Port | Foreign Socket | Hex Connection Number | Byte Rate | | R |
| DSNDDIST | T | 4466 | 9.19.47.125:1849 | 0X0006F4C8 | 5488263 | | |
| OSNMPD | U | 161 | 9.39.64.151:63776 | 0X0000001F | 2400522 | | |
| CXEGA19 | U | 1968 | 9.39.64.151:161 | 0X00000688 | 154449 | | |

You can click on a column (attribute) and sort by High or low values

Out-of-the-box Threshold values are provided for most metrics (attributes). When the threshold is exceeded, the column that displays the metric gets an icon AND the resource is highlighted as Warning (Yellow) or Critical (Red).

- VTAM
 - N3V_CPU_Pct_Critical
 - N3V_CPU_Pct_Warning
 - N3V_CSA_Pct_Below_16MB
 - N3V_EE_Pct_Packets_Rexmit
 - N3V_HPR_Conn_OOS_Buffers
 - N3V_HPR_Conn_Path_Switch
 - N3V_HPR_Throughput
 - N3V_Paging_Rate
 - N3V_Pct_ECDSA_Allocated_Stg
 - N3V_Total_CSA_Pct
 - NonPrimeShift
 - PrimeShift
 - QOMEGAMON_ONLINE
 - Weekday
 - Weekend

Situation Editor

Condition Distribution Expert Advice Action Until

Description

HPR RTP Connection with high number of out-of-sequence buffers

Condition

| | Out of Sequence Buffers |
|---|-------------------------|
| 1 | GE 100 |
| 2 | |
| 3 | |

Click inside a cell of the table editor above to see a description of the attribute for that column and to compose the condition.

Add an attribute to the condition by clicking Add Attributes and selecting the attributes you want to include.

Add attributes... Advanced...

Sampling interval

0 / 0 : 15 : 0

dd hh mm ss

Run at startup

Apply Cancel Help

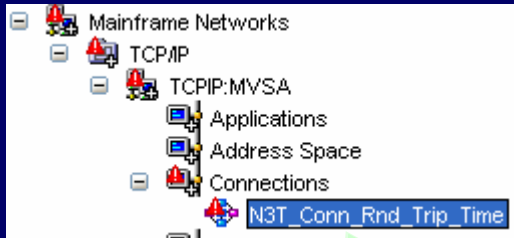
Condition Distribution Expert Advice Action Until

Text or Advice Location

A high number of out-of-sequence buffers indicates high CPU utilization of the remote z/OS Communications Server address space. This is probably due to network congestion or constrained CPU in the remote z/OS Communications Server address space. To solve, validate the router configuration parameters, confirm that CPU utilization is high for the remote system z/OS Communications Server address space, and redistribute the z/OS Communications Server workload on the HPR RTP connected remote system.

Point n' click to change threshold conditions. If those conditions are met, an Event is created

TCP/IP Situations

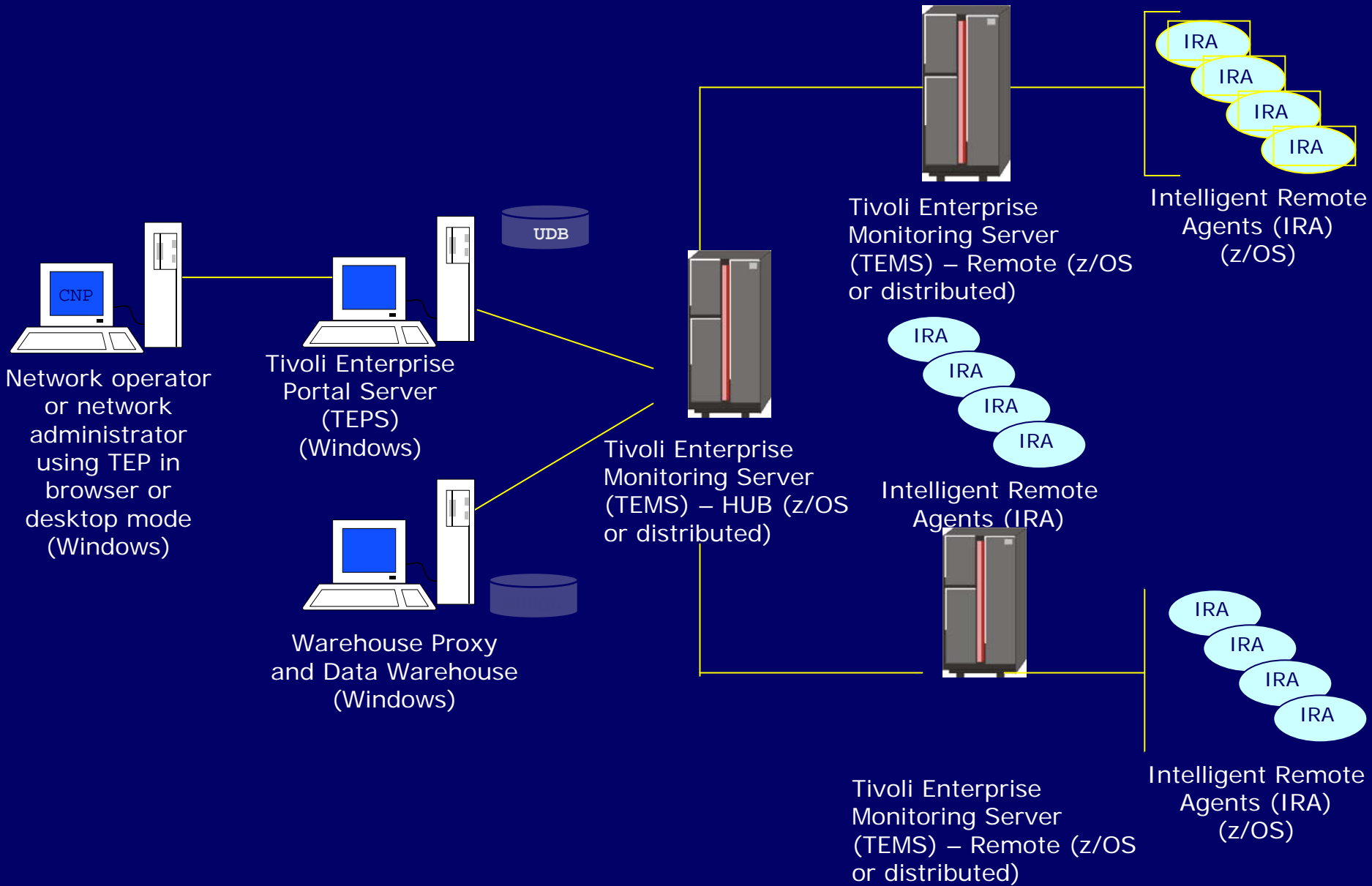


OMEGAMON 101:
 You can monitor Events
 (which are triggered by
 Situations meeting target
 conditions) from the
 Navigation Tree or the
 Event Console

| Response Time | Origin Node | System ID |
|-----------------------|-------------|-----------|
| 15.19 | TCPIP:MVSA | MVSA |
| 5.67 | TCPIP:MVSA | MVSA |
| Response Time GE 5.00 | | |

- [-] TCP/IP
 - N3T_Appl_Backlog_Conns_Rejected
 - N3T_Appl_Byte_Rate
 - N3T_Appl_Connections_in_Backlog
 - N3T_Appl_Datagram_Rate
 - N3T_Appl_FTPD1_Rate
 - N3T_Appl_Not_Accepting_Conn
 - N3T_Appl_Pct_Datagrams_Discd
 - N3T_Appl_Pct_OO_Segments
 - N3T_Appl_Pct_Segs_Rexmit
 - N3T_Appl_Reject_Conn
 - N3T_Appl_Reject_Conn_Resource
 - N3T_Appl_Reject_Conn_WorkSpike
 - N3T_Appl_Retransmission_Count
 - N3T_Conn_Backlog_Conns_Rejected
 - N3T_Conn_Byte_Rate
 - N3T_Conn_Connections_in_Backlog
 - N3T_Conn_Current_Retransmits
 - N3T_Conn_Datagram_Rate
 - N3T_Conn_Pct_Datagrams_Discd
 - N3T_Conn_Pct_OO_Segments
 - N3T_Conn_Pct_Segs_Rexmit
 - N3T_Conn_Rnd_Trip_Time
 - N3T_Conn_Rnd_Trip_Variance
 - N3T_Connection_Count
 - N3T_CPU_Pct_Critical
 - N3T_CPU_Pct_Warning
 - N3T_CSA_Pct_Below_16MB
 - N3T_Device_Status_Active
 - N3T_Device_Status_Inactive
 - N3T_Fragmentation_Failure_Pct
 - N3T_Fragmentation_Pct
 - N3T_IF_Rcv_Util
 - N3T_IF_Util
 - N3T_IF_Xmt_Util
 - N3T_Input_Discard_Pct
 - N3T_IP_Out_Disc
 - N3T_OSA_Chan_PCI_Busy_Pct_5Min
 - N3T_OSA_Chan_Pro_Util_Pct_5Min
 - N3T_OSA_Utilization
 - N3T_Output_Discard_Pct
 - N3T_Paging_Rate
 - N3T_Pct_Auth_Pvt_Allocated_Stg
 - N3T_Pct_ECDSA_Allocated_Stg
 - N3T_Pct_IF_Err
 - N3T_Pct_IF_In_Err
 - N3T_Pct_IF_Out_Err
 - N3T_Pct_IF_Pkt_Disc
 - N3T_Pct_IP_In_Disc
 - N3T_Pct_TCP_OO_Segs
 - N3T_Reassembly_Failure_Pct
 - N3T_Reassembly_Pct
 - N3T_Retransmission_Pct
 - N3T_TCP_Conn_Drop
 - N3T_TCP_In_Errs
 - N3T_TCP_Probes
 - N3T_Telnet_Pool_Usage_Critical
 - N3T_Telnet_Pool_Usage_Warning
 - N3T_Throughput_Rate
 - N3T_Total_CSA_Pct
 - N3T_UDP_Discard_Pct
 - NonPrimeShift
 - PrimeShift
 - GOMEGAMON_ONLINE
 - Weekday
 - Weekend

OMEGAMON XE Environment



Terminology Moving Forward

As part of the ITM 6.1 effort, the Candle platform components have been renamed as follows:

Candle Name

Tivoli Name

OMEGAMON Platform

Tivoli Monitoring Services

CandleNet Portal (CNP)

Tivoli Enterprise Portal (TEP)

CandleNet Portal Server (CNPS)

Tivoli Enterprise Portal Server (TEPS)

Candle Management Server (CMS)

Tivoli Enterprise Monitoring Server (TEMS)

■ Candle Management Server

- z/OS, Windows (2000, XP Pro, 2003 Server), AIX, HP, Solaris

■ CandleNet Portal Server

- Recommended hardware –
 - Intel P4 server capable of running Windows 2003, XP Pro or 2003 Server and DB2 UDB 8.1
- Windows 2000, XP Pro, 2003 Server
- DB2 8.1 (recommended) **OR** Microsoft SQL Server version 7.0 or 2000 **OR** MSDE
- Java 1.3.1_04 or higher

■ CandleNet Portal

- Recommended hardware –
 - Intel system capable of running Windows XP Pro or Windows 2000
- Windows XP Professional Edition w/SP 1 (or higher) or Windows 2000 w/SP 3 (or higher)
 - **CNP Desktop Client**
 - requires Sun Java v1.3.1_04 thru v.1.4.2_07
 - (excluding the 1.4.0 and 1.4.1 versions)
 - **CNP Browser Client** requires Internet Explorer 6 (or higher)
 - with Java Plug-in (same Java release levels as above)

■ Warehouse Proxy and Candle Data Warehouse

- Recommended hardware –
 - Intel P4 server capable of running Windows 2003, XP Pro or 2003 Server and Microsoft SQL Server version 7.0 or 2000
- Windows 2000, XP Pro, 2003 Server
- Microsoft SQL Server version 7.0 or Microsoft SQL Server 2000 (with fix pack 3)

- OMEGAMON XE for Mainframe Networks IRA
 - z/OS 1.4 (or higher).
 - maintenance on z/OS 1.4 and z/OS 1.5.
- OSA-Express adapters
 - Either OSA/SF or SNMP direct
 - Must be configured and running in order to collect OSA statistics.
 - The OSA-Express support has been modified to support the latest version of the OSA-Express MIB. To support this MIB, the Licensed Internal Code (LIC) levels of the OSA-Express adapters must meet the following criteria:
 - OSA module on a z900 or z800 system
 - LIC version of 3.33 or higher installed
 - OSA module on a z990 processor
 - all LIC levels are supported.

Required maintenance on z/OS 1.4:

| <u>APAR Number</u> | <u>Description</u> |
|--------------------|--|
| OA04394 | (VTAM) EE/HPR/CSM data collection |
| PQ77244 | (TCP/IP) TCP/IP stack enable network management interface APIs |
| PQ77633 | FTP client server records have invalid return code (see UQ80465) |
| PQ77837 | (TCP/IP) FTP enable network management interface APIs |
| PQ77838 | (TCP/IP) Config, Netstat, SNMP |
| PQ77840 | TCP/IP) IPCS enable network management interface APIs |
| PQ79583 | (TCP/IP) CPU missing from TCP/IP trace |
| PQ78753 | (TCP/IP) Correct FTP port & IP field information in SMF records |
| PQ74292 | SNMP getnext request error |
| PQ81716 | Telnet error in the date field for logon and logoff times |
| PQ83920 | Shareport not distributing connections evenly |
| PQ84072 | NETSTAT socket option displays incorrect information |
| PQ92481 | SNA collection exception CEE0374C Condition=CEE3204S |
| II13699 | Informational APAR on CD/390 API new function |

Required maintenance on z/OS 1.5:

| <u>APAR Number</u> | <u>Description</u> |
|--------------------|---|
| PQ78753 | Correct FTP port and IP field information in SMF records |
| PQ81716 | Telnet error in the date field for logon and logoff times |

Where to go for more information

Product overviews, Manuals, Demos, and Support

<http://www.ibm.com/software/tivoli/sw-atoz/index.html>

Tivoli. software

Tivoli

Products by category

Products A-Z

Support

A B C D E F G H I J K L M N O P Q R S T U V W X Y Z

● Tivoli OMEGAMON XE

→ [for Mainframe Networks](#) | [How to buy](#) | [Support](#)

White Paper

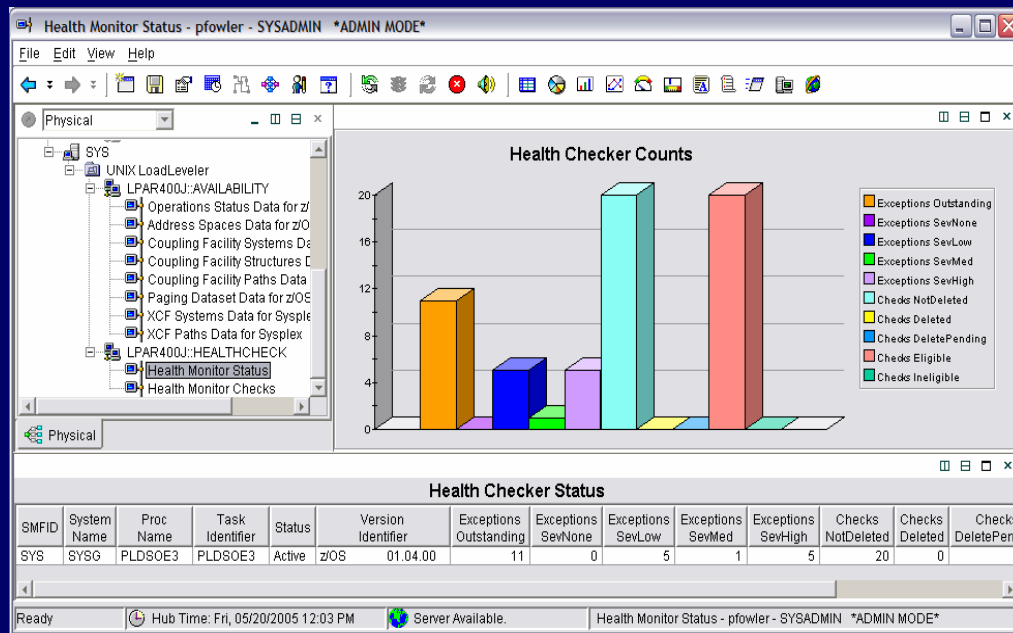
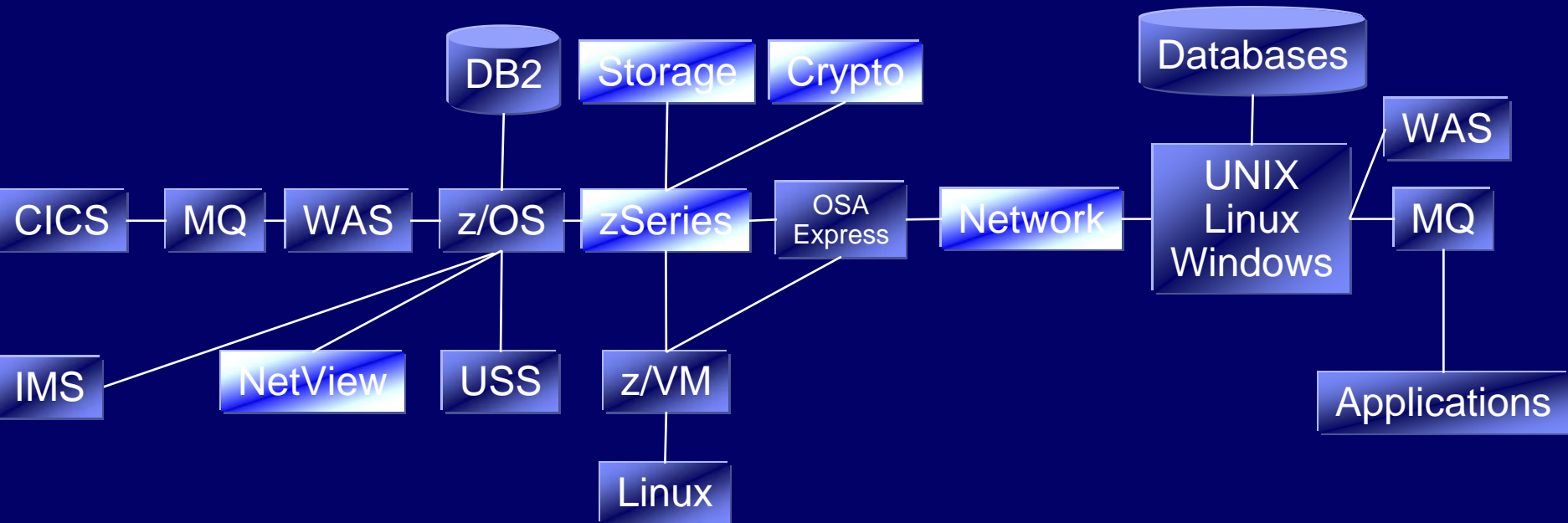
NetView for z/OS V5.2: Integrated enterprise management with OMEGAMON

http://www-306.ibm.com/software/tivoli/features/ccr2/ccr2-2005-11/product_updatesII.html

Red Book OSA-Express Implementation Guide

<http://publib-b.boulder.ibm.com/abstracts/sg245948.html?Open>

OMEGAMON End-to-End





Thank You

