

ST7501 White Paper

Export

© 2009 VIVOTEK INC. All Right Reserved

VIVOTEK may make changes to specifications and product descriptions at any time, without notice.

The following are trademarks of VIVOTEK INC., and may be used to identify VIVOTEK products only: VIVOTEK. Other product and company names contained herein may be trademarks of their respective owners.

No part of this publication may be reproduced or utilized in any form or by any means, electronic or mechanical, including photocopying and microfilm, without permission in writing from VIVOTEK INC.

Revision History

Version	Issue date	Editor	Comment
0.1	2009/04/07	Leo	First draft
0.2	2009/05/21	Peggy	Modified titles
1.0	2009/05/25	Leo	First release
1.1	2009/06/05	David Liu	Checked and modified grammar
1.2	2009/09/15	Polly	Modified that add the Back files

Table of Contents

Export	4
1. Convert to AVI.....	4
2. Scheduled Backup	7
3. Manual Backup	11

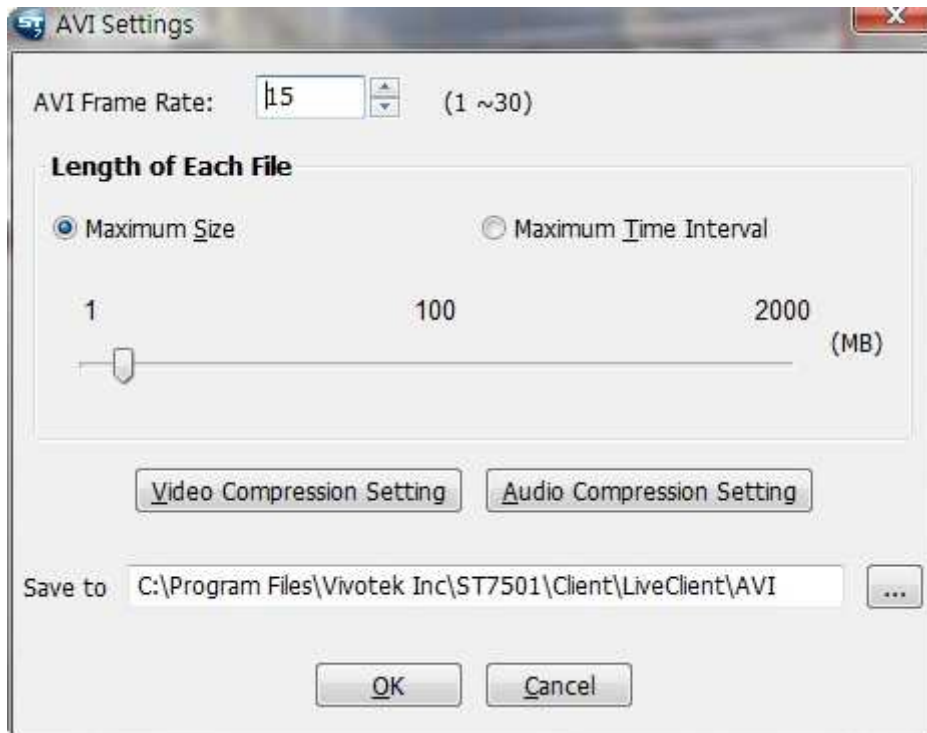
VIVOTEK Confidential

Export

1. Convert to AVI

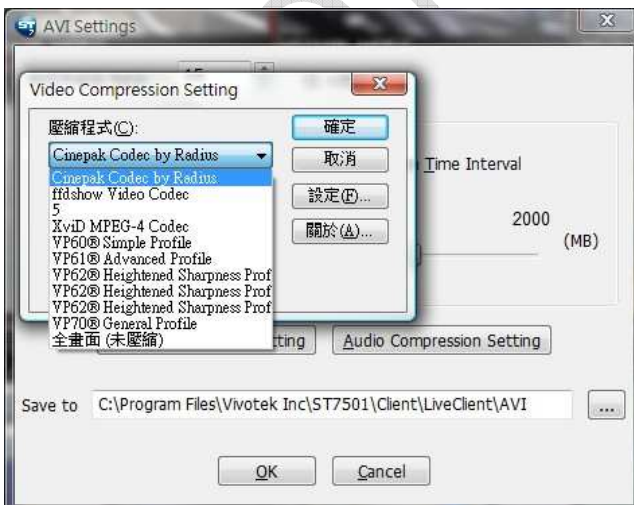
Live Client

1. Set up the AVI settings first:

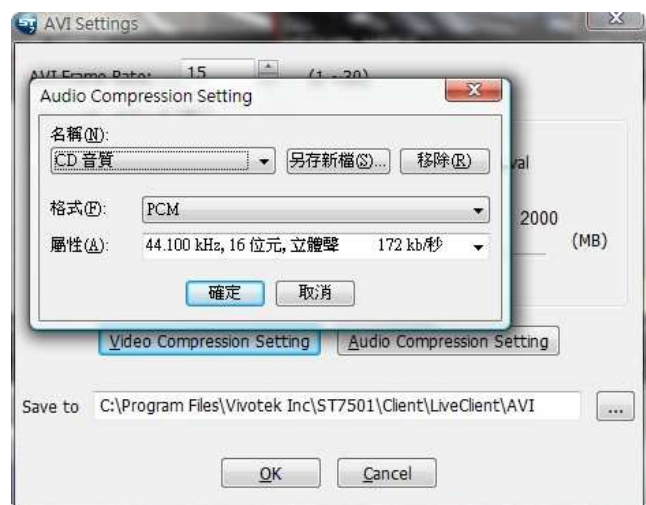


AVI settings interface

2. Set up the audio & video codec before recording to AVI:



Video Codec

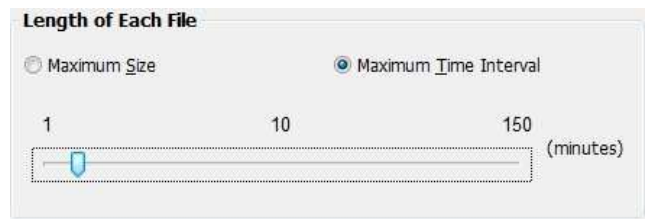


Audio Codec

3. The maximum size or maximum time interval between AVI files can be chosen:

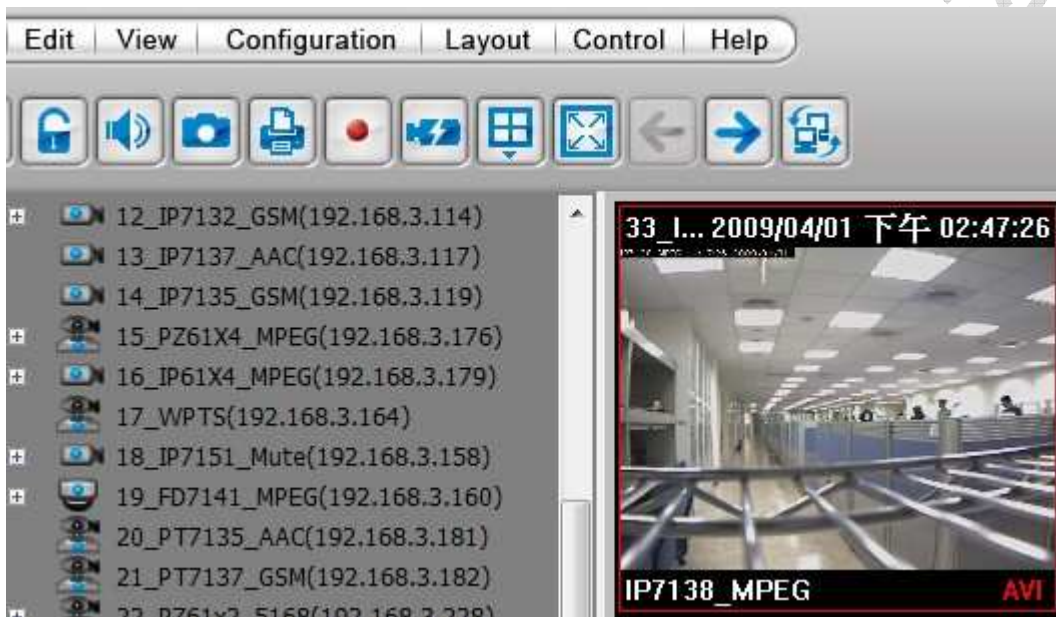


AVI file maximum size (Maximum: 2000MB)



AVI file maximum time interval
(Maximum: 150min)

4. Start recording:



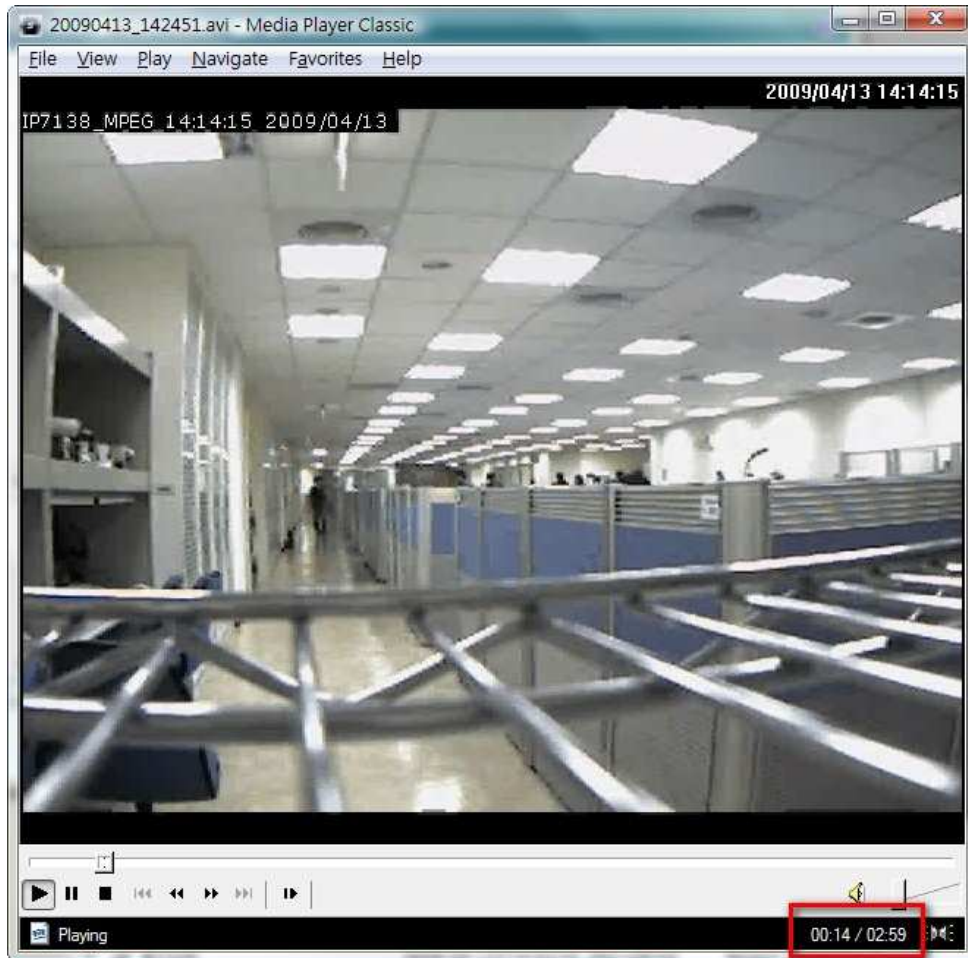
Recording status

5. Another AVI will be created when the maximum size limit is reached:

20090410_172947.avi	100,581 KB
20090410_172947(1).avi	115,918 KB
20090410_173126(1).avi	2,095,451 KB
20090410_173126.avi	2,096,084 KB

Check AVI file size

6. Another AVI will be created when the maximum time limit is reached:

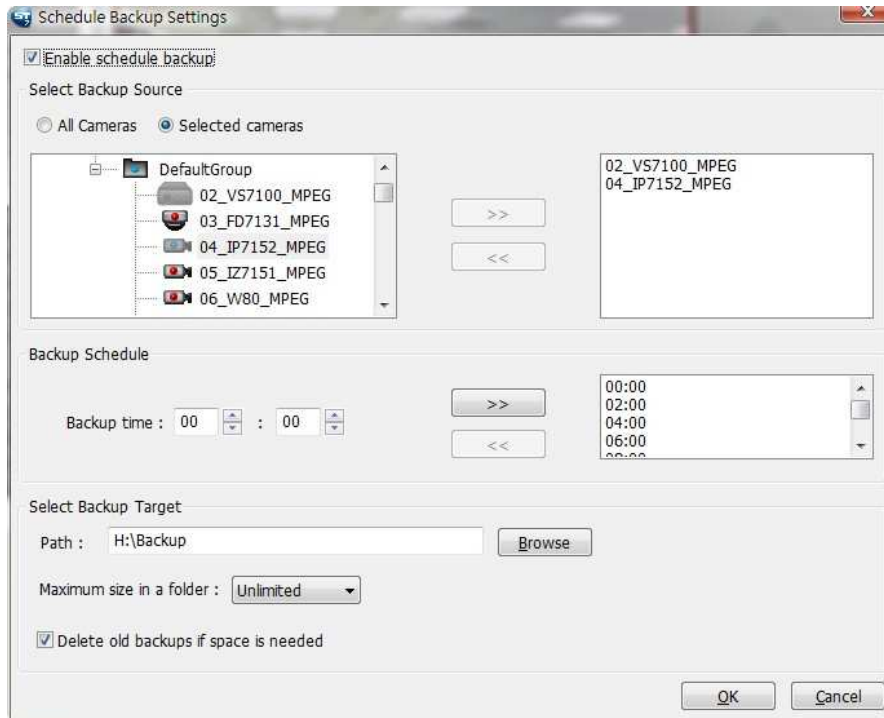


Check AVI file time interval

※The recorded data from Playback also can be converted to AVI files by using Playback with the same settings as LiveClient.

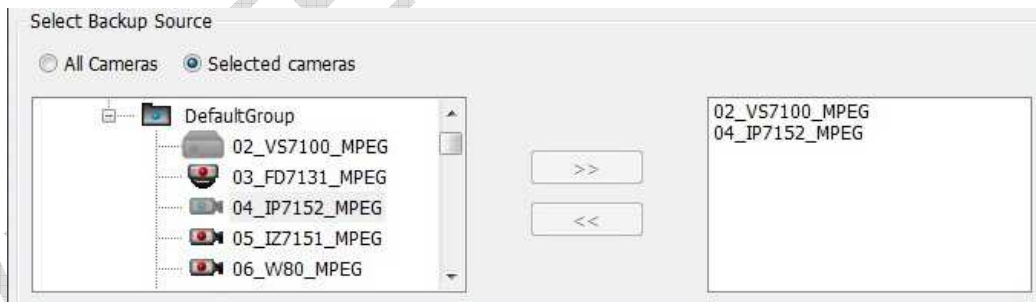
2. Scheduled Backup

1. ST7501 supports scheduled (daily) backup. Users can configure the scheduled backup via the "Schedule Backup Settings".



Schedule Backup interface

2. Backup can be performed for all or only for selected camera(s):



Select all cameras or one camera

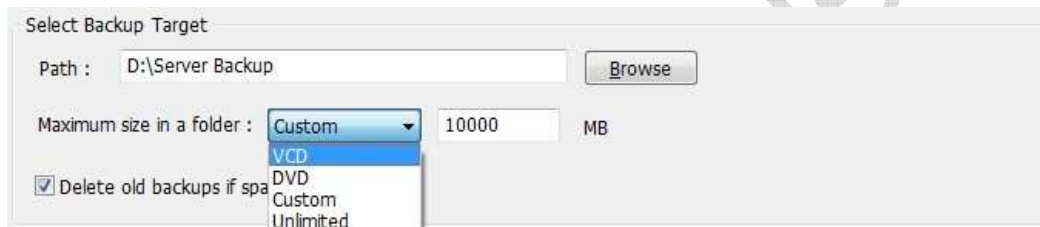
3. The backup interval should be no less than 1 hour. The user interface will check whether the added time between two backups is less than 1 hour. (An overlap situation should be considered also. Ex: 00:30, 23:45 is not possible). Therefore, there can be 24 backups in one day.



Select Backup time

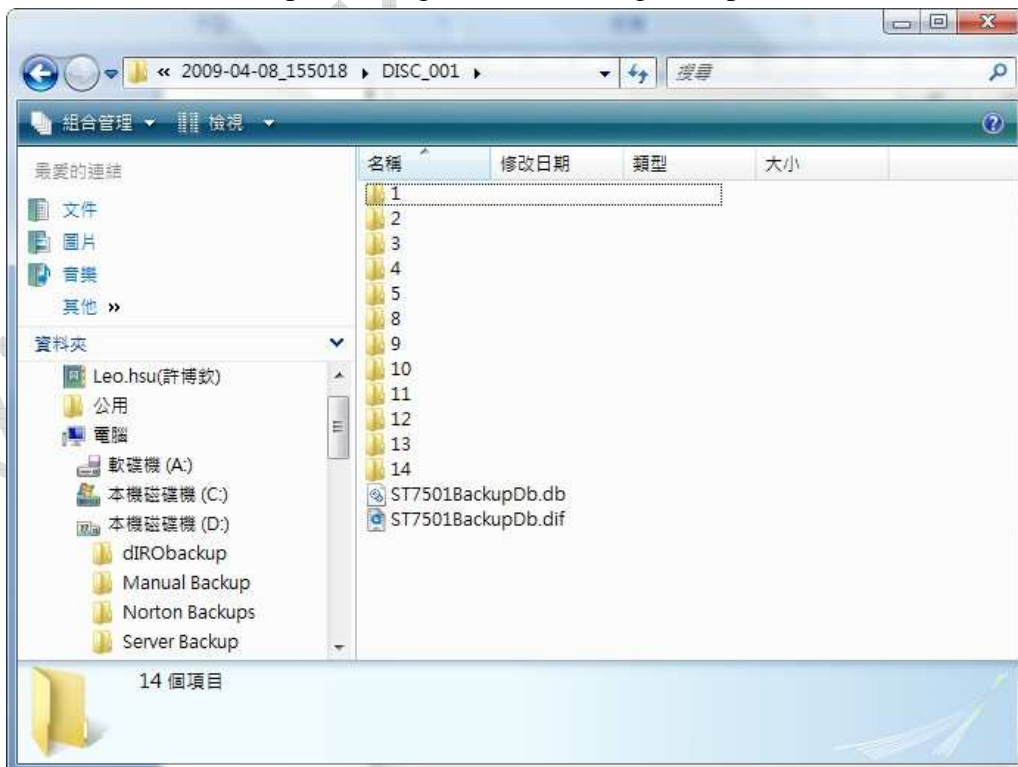
※The program will backup the data from the previous backup to the next schedules backup.

4. The backup data can be divided into a user specified size (VCD/DVD/Unlimited/Custom).



Select Backup type

5. Once the backup time limit is reached, the backup program will begin recording.
6. The user can check the backup recording data in the designated path.



Recording data backup successful

7. When selecting VCD size, a new backup file is created once the old one reaches 650MB.

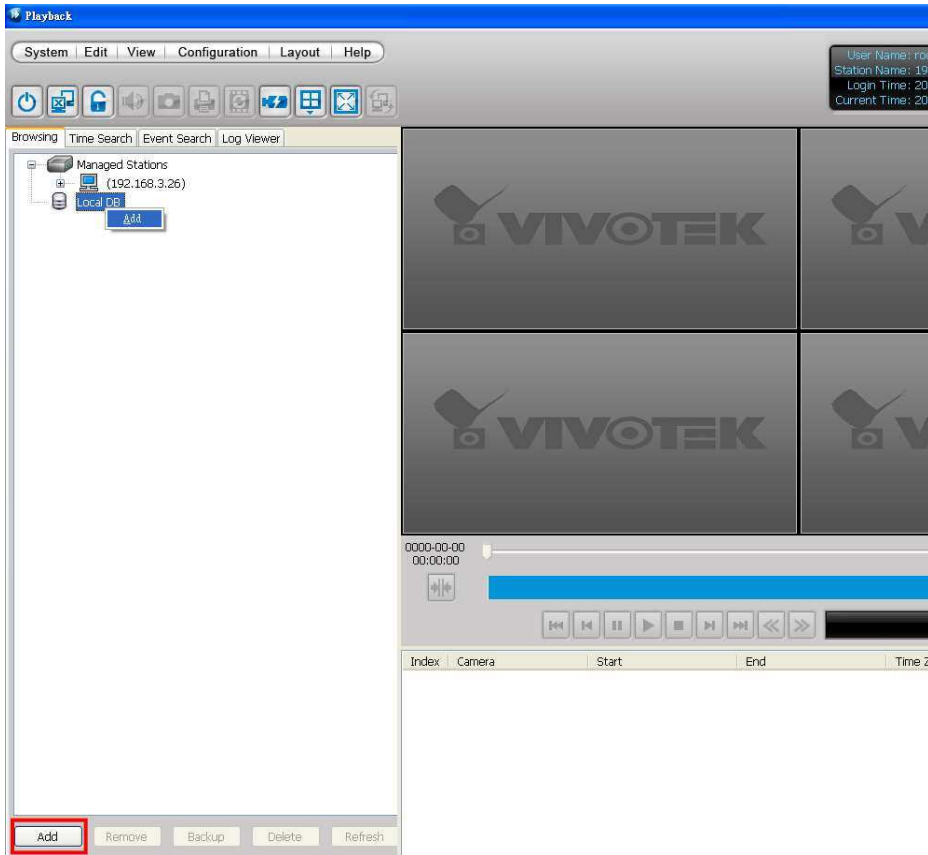


Backup file

※Backup size limits based on type:

Folder Type	Max Size
VCD	650MB
DVD	4.7GB
Custom	Maximum: 2000TB
Unlimited	Until space is full

8. If you want to see the back files, and please right click Local DB and click Add or click the **Add** button below.



Add the Back file

9. Select the back files and then you can play recorded data via Playback.

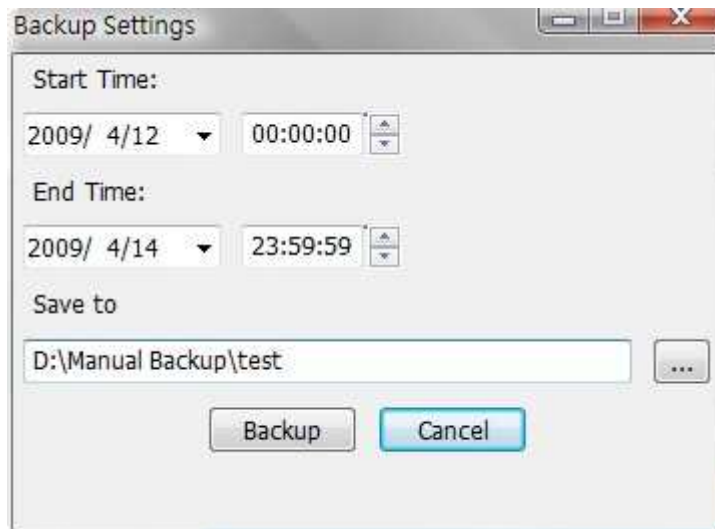


Select Backup Database to Play

3. Manual Backup

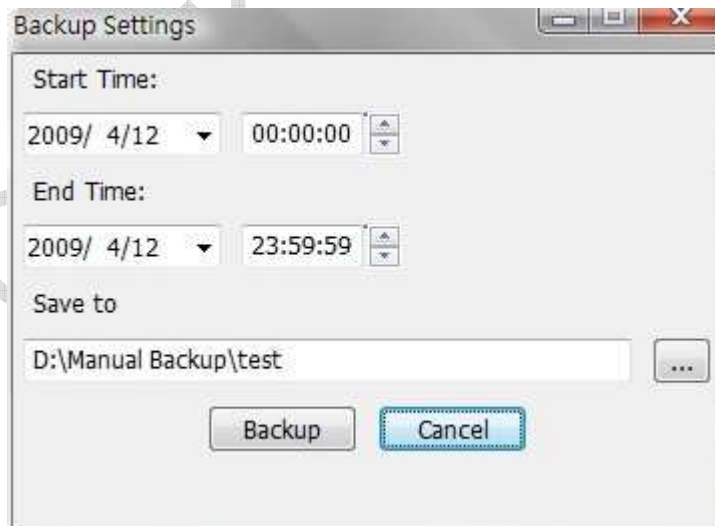
1. ST7501 can export data to a user specified path, either one file, one day, or all the data for one camera. The export data should be a database and contain an executable file for browsing.

Export data for one camera:



Backup Settings(All Day) interface

Export data for one day for one camera:



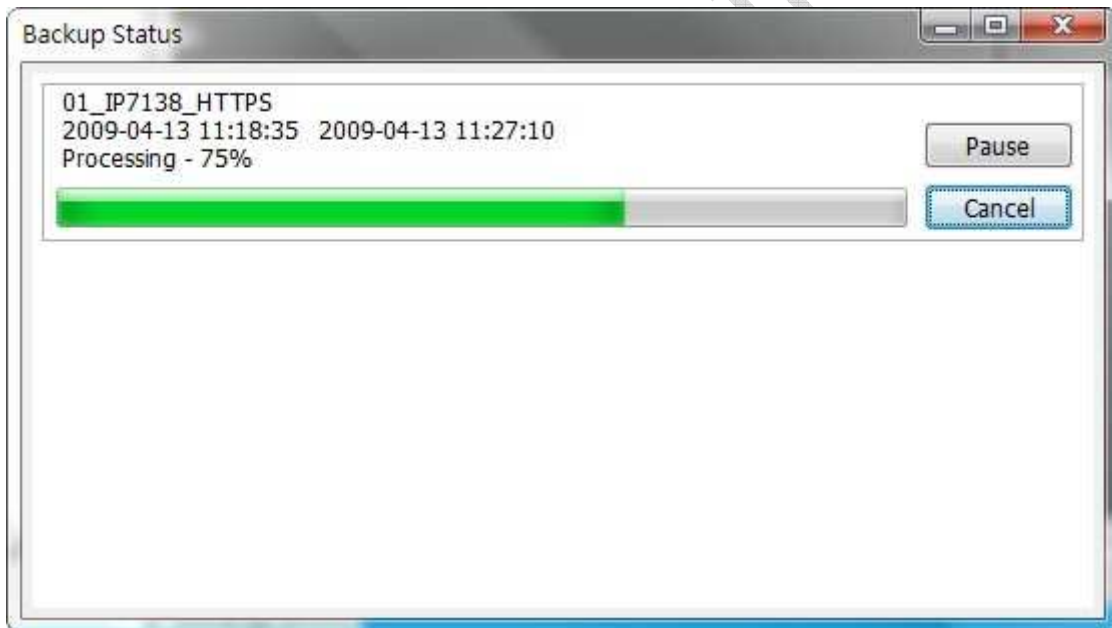
Backup Settings(One Day) interface

Export data for specified files:



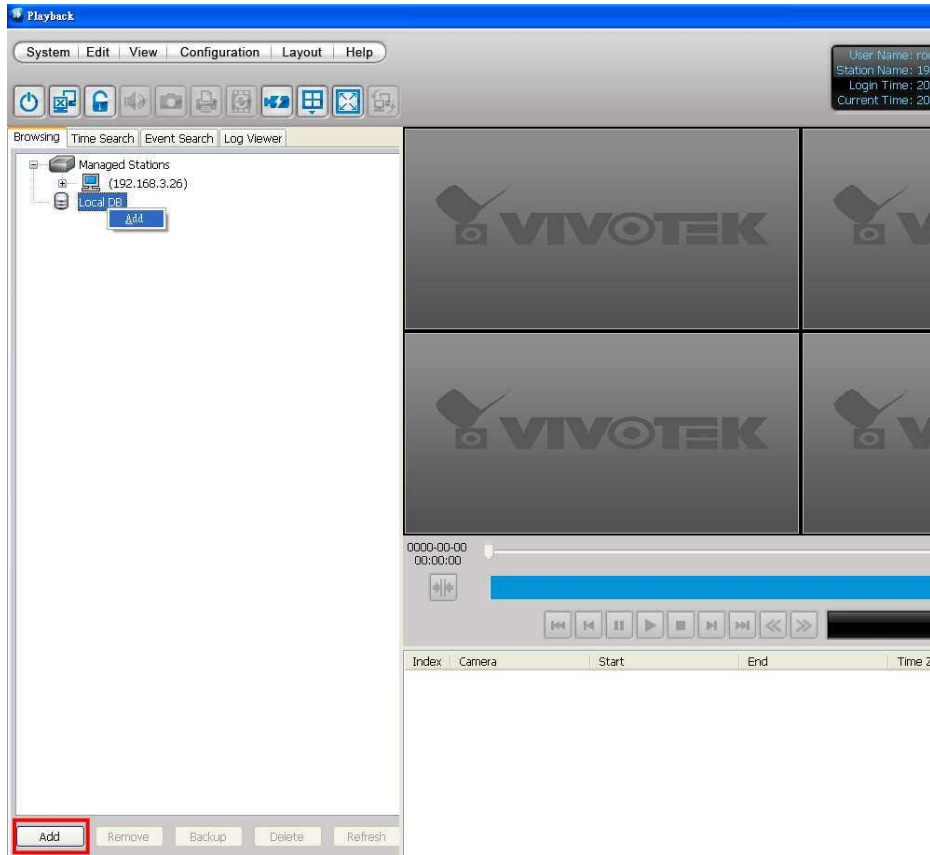
Backup Settings(Time Interval) interface

2. Shows the backup status:



Backup process

3. If you want to see the back files, and please right click Local DB and click Add or click the **Add** button below.



Add the Back file

4. The user can play recorded data via Playback



Select Backup Database to Play

※Differences between Server Backup and Manual Backup

Manual Backup	Backup is more flexible in that you can define the backup size and interval as needed.	Only backup one camera at a time.
Server Backup	Cannot define the backup interval and the backup will not start until the schedule begins.	Supports backup of all cameras or only selected camera(s).

VIVOTEK Confidential