

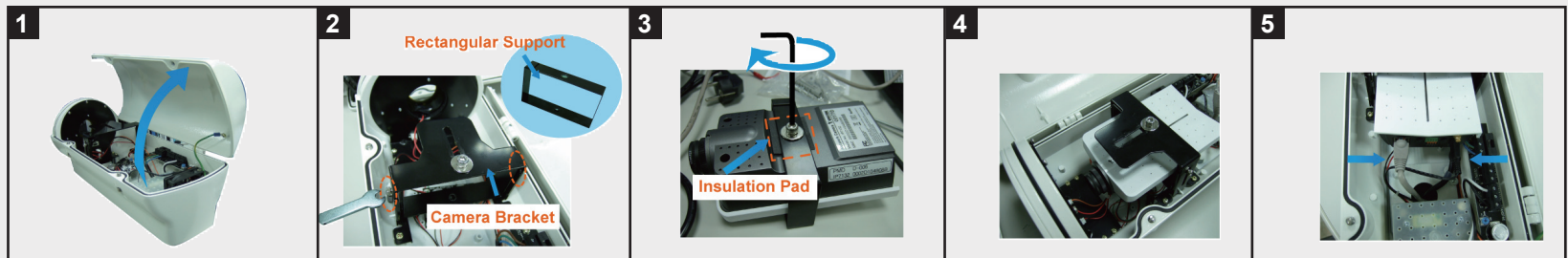
*Installation Guide for
Accommodating VIVOTEK Cameras in the Housing*

AE2000 **Camera Housing**

The AE2000 camera housing, complying with IP66 standard, serves to provide protection against foreign substances and water for VIVOTEK Cameras. Applicable to the following models: IP7131, IP7138, IP7151 and IZ7151.

For VIVOTEK Camera IP7131 and IP7138:

- 1** : Open the housing cover.
- 2** : Release two screws both sides of camera bracket first and adjust the position of camera bracket by sliding it up and down. Use the small wrench to do this. When completed, tighten the screws.
 - Detach the rectangular support from the camera bracket. Use the supplied L-type hex key wrench to do this.
- 3** : Attach the camera to the rectangular support with an insulation pad in between; then secure the camera with the supplied locking screw. Use the supplied L-type hex key wrench to do this.
- 4** : Insert the rectangular support in the camera bracket and secure the rectangular support with the supplied locking screw. Always check that the camera is firmly attached to the housing.
- 5** : Connect the power cable and Ethernet cable to the camera.



For VIVOTEK Camera IP7151 and IZ7151:

- 1** : Open the housing cover.
- 2** : Release two screws both sides of camera bracket first and adjust the position of camera bracket by sliding it up and down. Use the small wrench to do this. When completed, tighten the screws.
 - Detach the rectangular support from the camera bracket as it is not required for IP7151 and IZ7151 installation. Use the supplied L-type hex key wrench to do this.
- 3** : Attach the camera to the camera bracket with an insulation pad in between; then secure the camera with the locking screw. Use the supplied L-type hex key wrench to do this. Always check that the camera is firmly attached to the housing.
- 4** : Connect the power cable and Ethernet cable to the camera.
- 5** : To turn on the light sensor of the camera housing, connect the circuits to the general I/O terminal block of the camera.

