

IBM TotalStorage™ IP Storage 200i



Release Notes

Version 1 Release 1

IBM TotalStorage™ IP Storage 200i



Release Notes

Version 1 Release 1

Contents

Release notes	1
Functional notes	1
A headless appliance	1
iSCSI clients	1
Installation notes	2
Prerequisites	2
Configuring the IBM IP Storage for the first time	2
Administration notes	4
Updating the code	4
Servicing the appliance	5
Recovering the appliance	5
Virtual logical units	5
Known issues and limitations	6

Release notes

This document contains the release notes for the IBM TotalStorage IP Storage 200i.

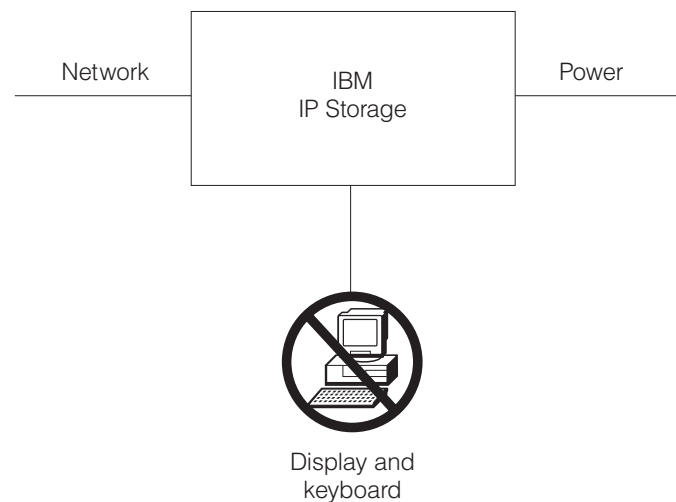
Refer to www.ibm.com/storage/support/nas for possible updates to these release notes and copies of the documents.

Functional notes

The following sections contain information about the IBM IP Storage.

A headless appliance

The IBM IP Storage is a *headless* appliance. Do not attach a monitor or keyboard during installation or normal operation.



iSCSI clients

The iSCSI client allows Microsoft® Windows® NT, and Microsoft Windows 2000, and Linux computers to access storage over an IP network. The iSCSI client (as an iSCSI initiator) issues SCSI commands to the IBM IP Storage (an iSCSI target) according to the IETF-defined protocol for IP storage.

When the iSCSI client is successfully connected to an iSCSI target device, any disks assigned to the iSCSI client appear as a physical disk. (Operations normally performed on a physical SCSI disk can be performed on an iSCSI disk.) Currently, you cannot boot from an iSCSI disk; instead, the iSCSI disk is used for storage after the computer is booted.

You can download the iSCSI client code from the following web site:

www.ibm.com/storage/support/nas

Installation notes

The following sections contain information about installing the IBM IP Storage.

Attention: Before installing your IBM IP Storage appliance, read carefully the installation procedures in the *IBM TotalStorage IP Storage 200i Installation Guide*.

Prerequisites

The IBM TotalStorage IP Storage 200i requires a web browser to access the Administrative Console. The supported web browsers are the Microsoft Internet Explorer 5.x (and later) and Netscape 4.5 (and later) running on Windows 98, Windows Millennium, Windows NT, and Windows 2000. An Internet connection is recommended.

Note: The IBM IP Storage requires a direct connection from the browser, not through a proxy server. If a proxy server is used for the Internet, the IBM IP Storage must be excluded.

The Administrative Console requires the Sun Java Plug-in 1.3, which is available online at java.sun.com.

Note: The Sun Java™ Plug-in 1.3 is a product of Sun Microsystems, Inc. IBM does not distribute, support or maintain the Sun Java Plug-in 1.3 and your use of this product is subject to license terms and conditions imposed by Sun Microsystems, Inc. Contact Sun Microsystems, Inc. directly if you have any questions about this product.

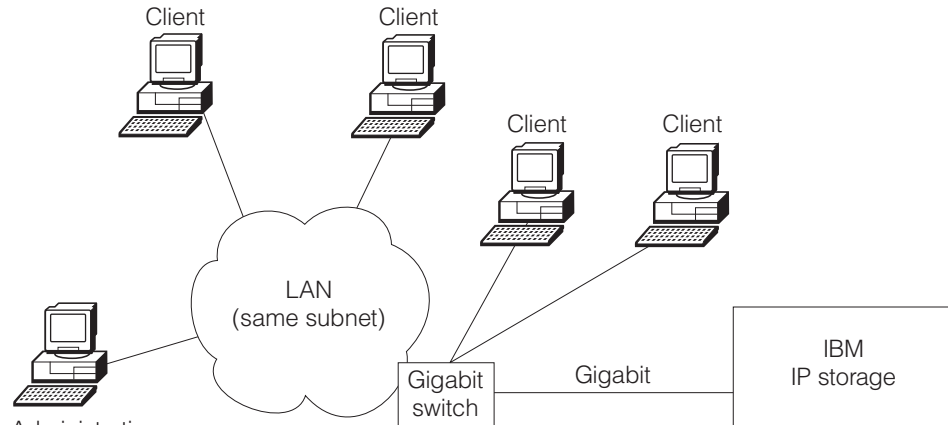
Configuring the IBM IP Storage for the first time

Before the IBM IP Storage can be fully functional as an iSCSI server, you must obtain an initial IP address and complete a set of required configuration tasks using the Administrative Console. The Administrative Console allows you to configure and manage the IBM IP Storage through a web browser. Because the appliance is headless, configuration must be completed from another machine, known as the *management workstation*.

You can access the Administrative Console through the Service Ethernet (control port) or Gigabit Ethernet (data port).

Accessing the Administrative Console through the Gigabit port

The Gigabit port is not preconfigured with an IP address. To obtain the initial IP address, point the browser on the Administrative Console to URL **http://xxx.xxx.xxx.xxx:3939/IBM200i**, where *xxx.xxx.xxx.xxx* is the IP address you want to assign to the appliance. This address *must not* be used by other systems in the network.



Administrative console

- Windows 98, NT, Millenium, 2000
- Internet Explorer or Netscape (direct connection, not proxy)
- Java Plug-in 1.3 (see java.sun.com)
- <http://xxx.xxxx.xxx.xxx:3939/IBM200i>

If the browser times out, the IP-address assignment was not successful. Go to a command line in the management workstation. Type **arp -a [n]** (where *n* is the desired IP address) and press **Enter**. If the corresponding MAC address does not match the appliance's MAC address, then the IP address is used by another host; repeat this procedure using another IP address. If the ARP entry is resolved to the correct appliance, delete the resolved entry by typing **arp -d IP_address** and pressing **Enter**, and repeat this procedure. If multiple appliances are being set up simultaneously, retry with a different address after deleting the resolved entry.

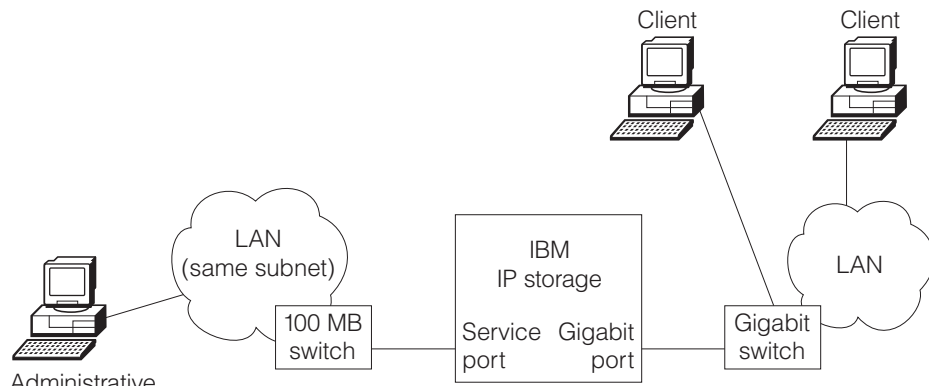
When the workstation connects successfully to the appliance, a pop-up window appears for login and password. Refer to the *IBM TotalStorage IP Storage 200i Installation Guide* and *IBM TotalStorage IP Storage 200i Administrator's Guide* for instructions on logging into the Administrative Console and configuring the IBM IP Storage.

Accessing the Administrative Console through the Service port

The Service Ethernet is preconfigured with IP address 192.9.200.1. The Administrative Console must be configured on the 192.9.200 subnet to use the preconfigured IP address.

It is recommended that you use the default IP address of the Service Ethernet; however, you can change the default IP address from the serial console by typing **enet** and pressing **Enter** at the **svc>** prompt and following the instructions on the screen. (See "Recovering the appliance" on page 5 for instructions on setting up the serial console.)

To connect to the IBM IP Storage through the Service Ethernet, point your browser to URL <http://192.9.200.1:1959/IBM200i>.



- Windows 98, NT, Millenium, 2000
- Internet Explorer or Netscape
(direct connection, not proxy)
- Java Plug-in 1.3 (see java.sun.com)
- <http://192.9.200.1:1959/IBM200i>

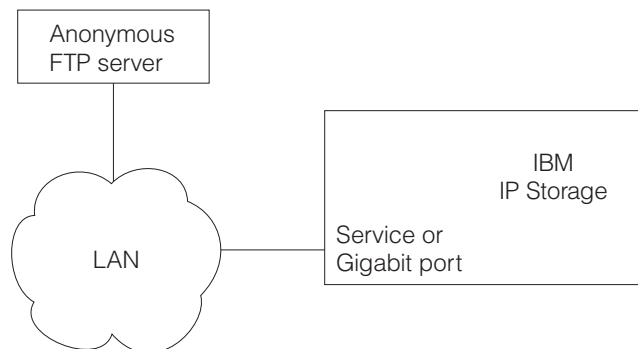
When the workstation connects successfully to the appliance, a pop-up window appears for login and password. Refer to the *IBM TotalStorage IP Storage 200i Installation Guide* and *IBM TotalStorage IP Storage 200i Administrator's Guide* for instructions on logging into the Administrative Console and configuring the IBM IP Storage.

Administration notes

The following sections contain information about administering the IBM IP Storage.

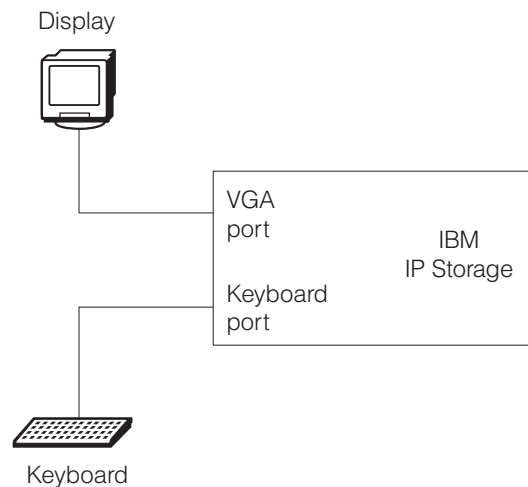
Updating the code

Code updates are installed from a local FTP server connected to the appliance. This FTP server must support anonymous FTP.



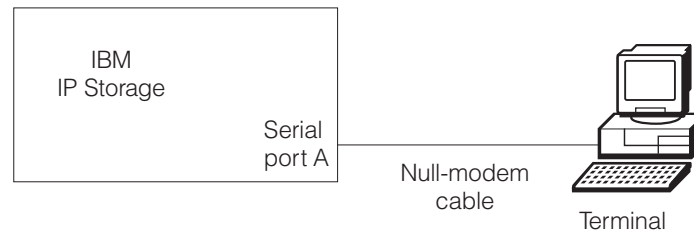
Servicing the appliance

When you are servicing or troubleshooting the IBM IP Storage, you might need to attach a keyboard and monitor to the appliance. Attach the monitor to the VGA port, and attach the keyboard to the keyboard port located on the back of the appliance.



Recovering the appliance

The Recovery CD (in conjunction with the Recovery Boot diskette) enables you to load the system image from an anonymous FTP server. Before attempting to recover the appliance, attach a serial console or equivalent device to serial port A of the appliance using a null-modem cable.



Use the following communication settings to configure the serial console:

- 19200 baud
- 8 data bits
- No parity
- 1 stop bit

Refer to the *IBM TotalStorage IP Storage 200i Administrator's Guide* for complete procedures on recovering the appliance.

Virtual logical units

After you create a virtual logical unit (VLUN), you cannot change its size.

You cannot delete individual VLUNs; however, you can remove *all* VLUNs in a logical disk. Note that all data is lost when you delete the VLUNs.

Known issues and limitations

The following are known issues and limitations for the IBM IP Storage. Refer to www.ibm.com/storage/support/nas for the latest issues and limitations.

- It is important to log off from the Administrative Console when you are no longer using it. Leaving a panel idle for extended periods of time can cause unpredictable results.
- In rare instances, the Administrative Console may become unavailable. Contact your IBM customer service representative for recovery procedures.



Part Number: 38P7764



Printed in the United States of America
on recycled paper containing 10%
recovered post-consumer fiber.

(1P) P/N: 38P7764

