

WIRING DIAGRAMS

Address:

Owner:

Contractor:

Designer:

Director:

CONTENT

main page.....	1
content.....	2
specifications.....	3
building plant.....	4
distribution board.....	5
circuit 1 on building plant.....	6
circuits 2-4 on building plant.....	7
circuits 5-8 on building plant.....	8
circuit 9 on building plant.....	9
circuit 10 on building plant.....	10
circuits 11-16 on building plant.....	11
circuits 17-19 on building plant.....	12
circuits 20-21 on building plant.....	13
circuit 22 on building plant.....	14
short circuit (fire safety).....	15
materials.....	16

TECHNICAL CONDITIONS

Introductionary cable: NYM 5G6

Main fuse: 3x40A

Power supply:

voltage: Y+N 230/400V

type of current: ~3 AC

frequency: 50Hz

type of power system: 3-phase

Voltage drop: 2.9%

Ground:

- missing (voltage doesn't exceed 50V)
- TN-C
- TN-C-S
- TN-S
- T-T
- I-T
- M+ and M- with grounded tap

Ground impedance: < 2 Ohm

I (breaking):

- 4.5 kA
- 6 kA
- 10 kA
- 15 kA
- 25 kA
- 60 kA
- 90 kA

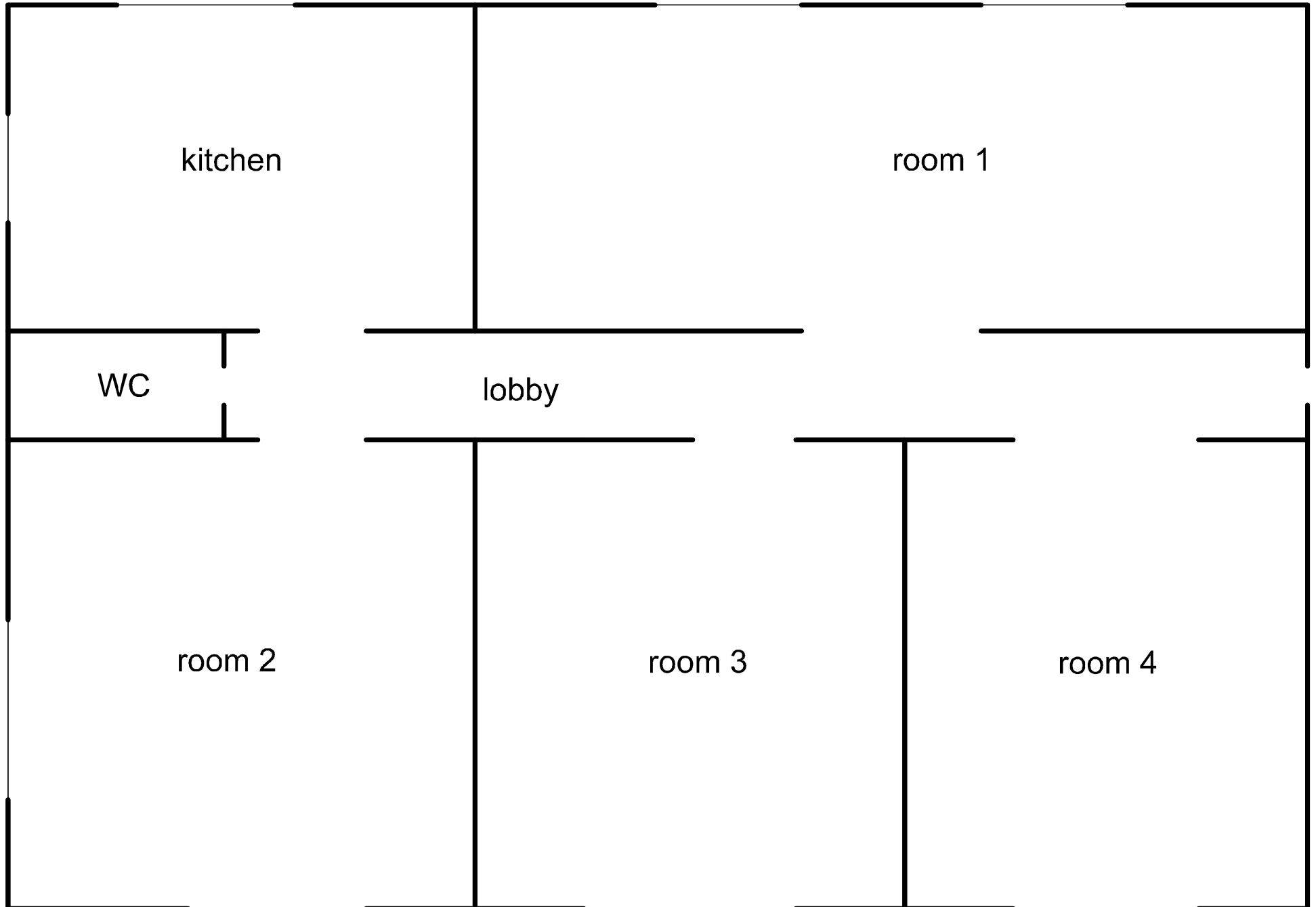
Wiring way:

- overhead powerline
- underground power cable
- cable shaft
- cables on wall surface
- cables inside the wall
- cables in cable tray
- other: _____

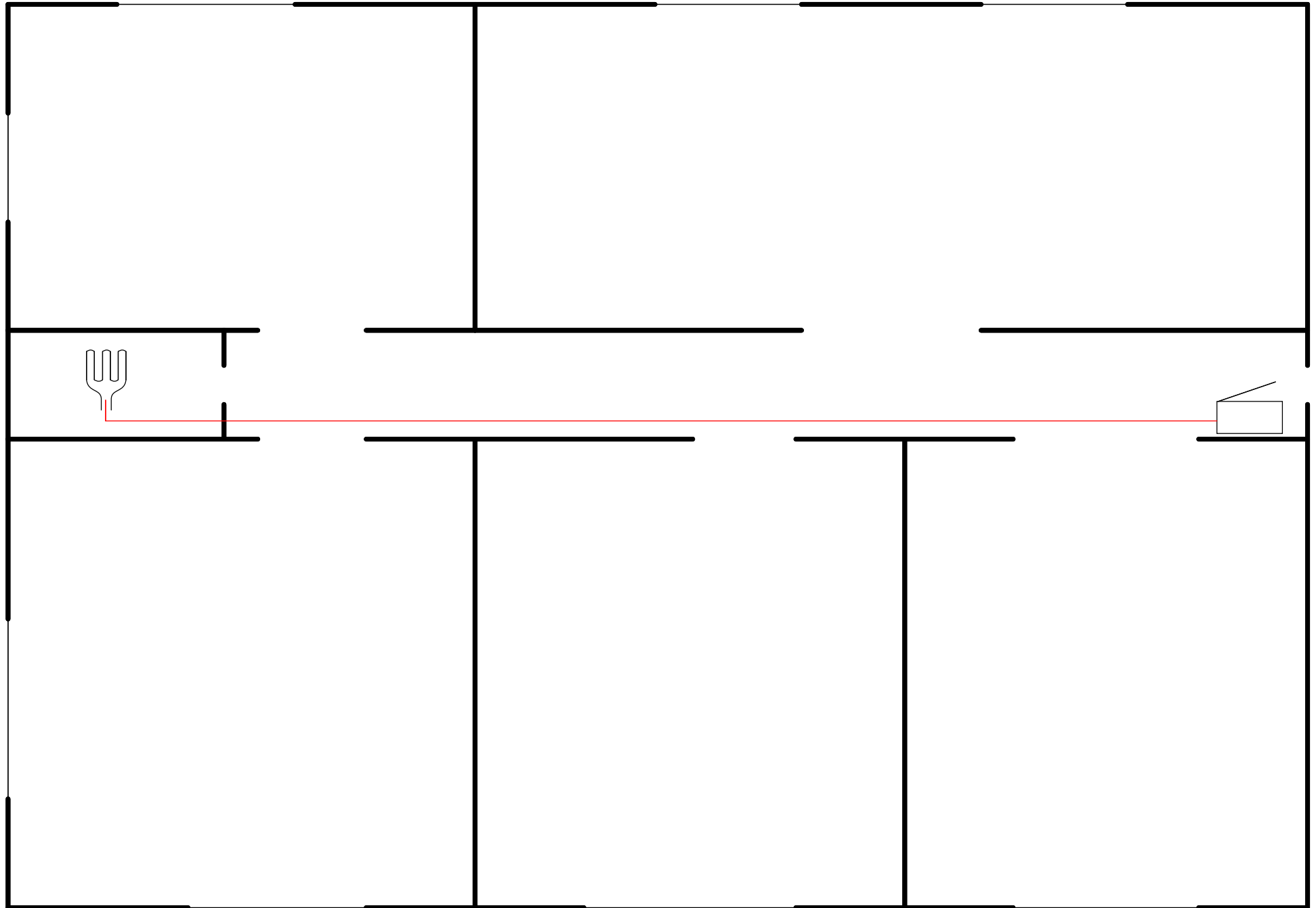
Fuse box:

- wall surface
- inside the wall
- other: _____

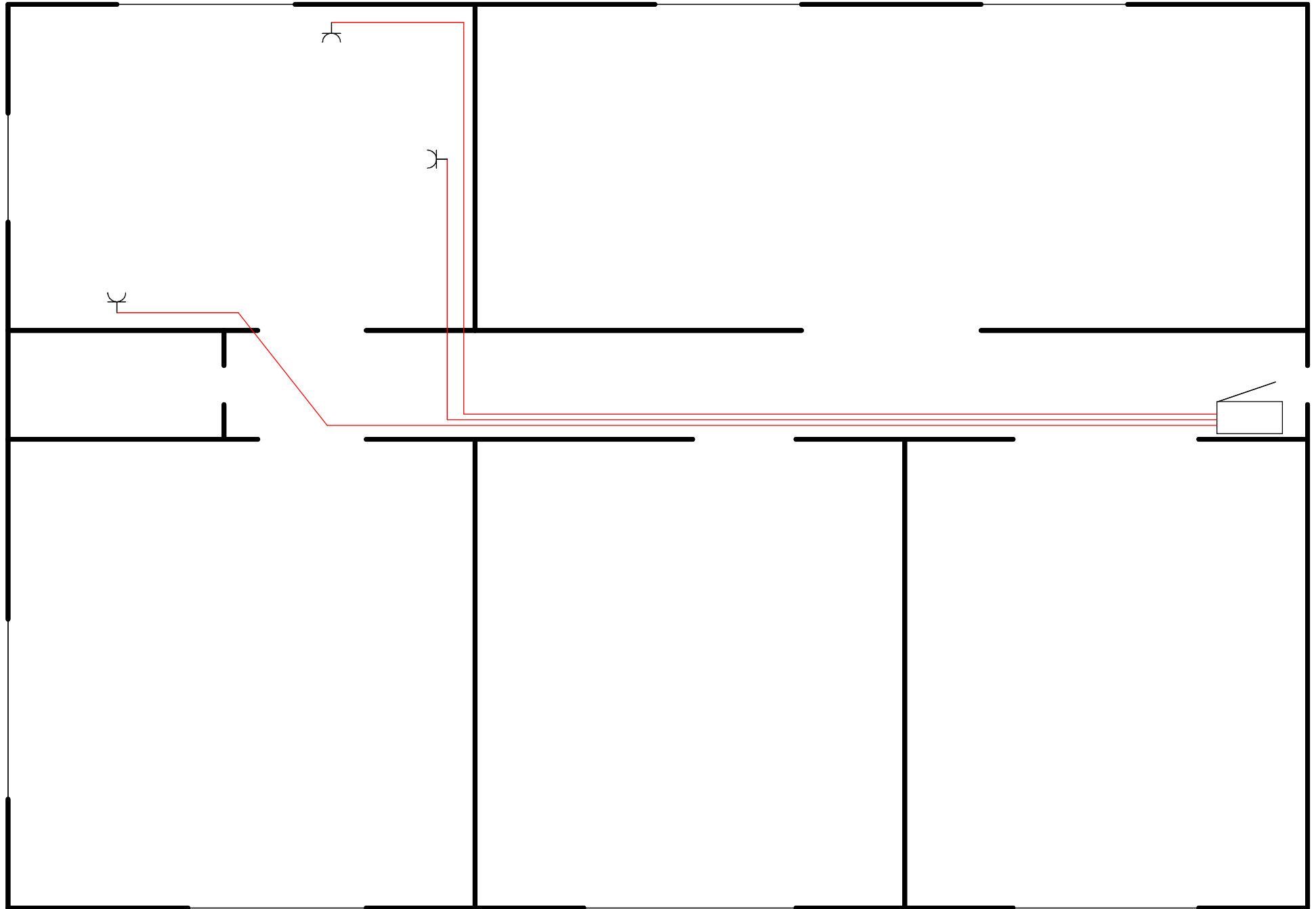
BUILDING PLANT



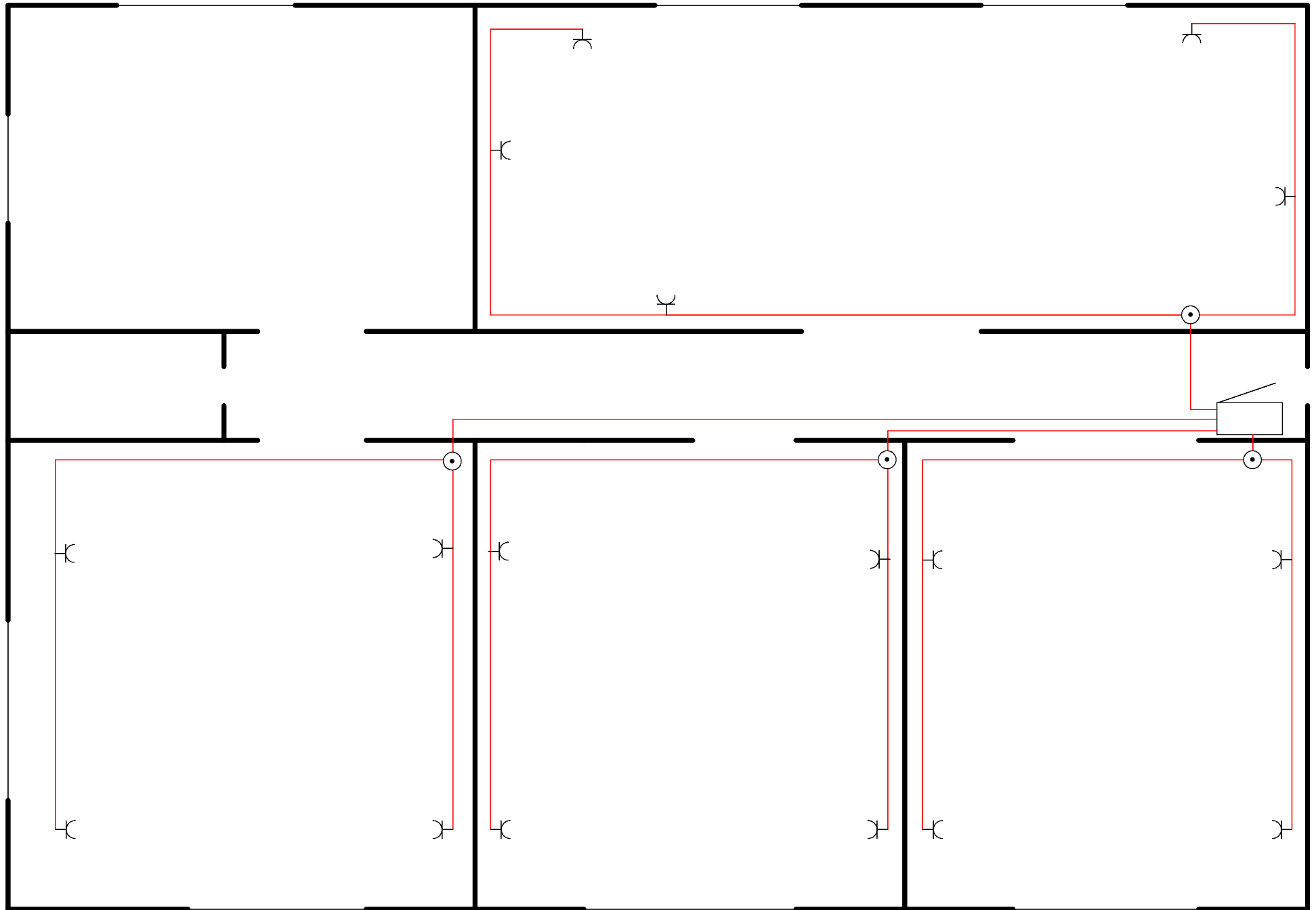
CIRCUIT 1 ON BUILDING PLAN



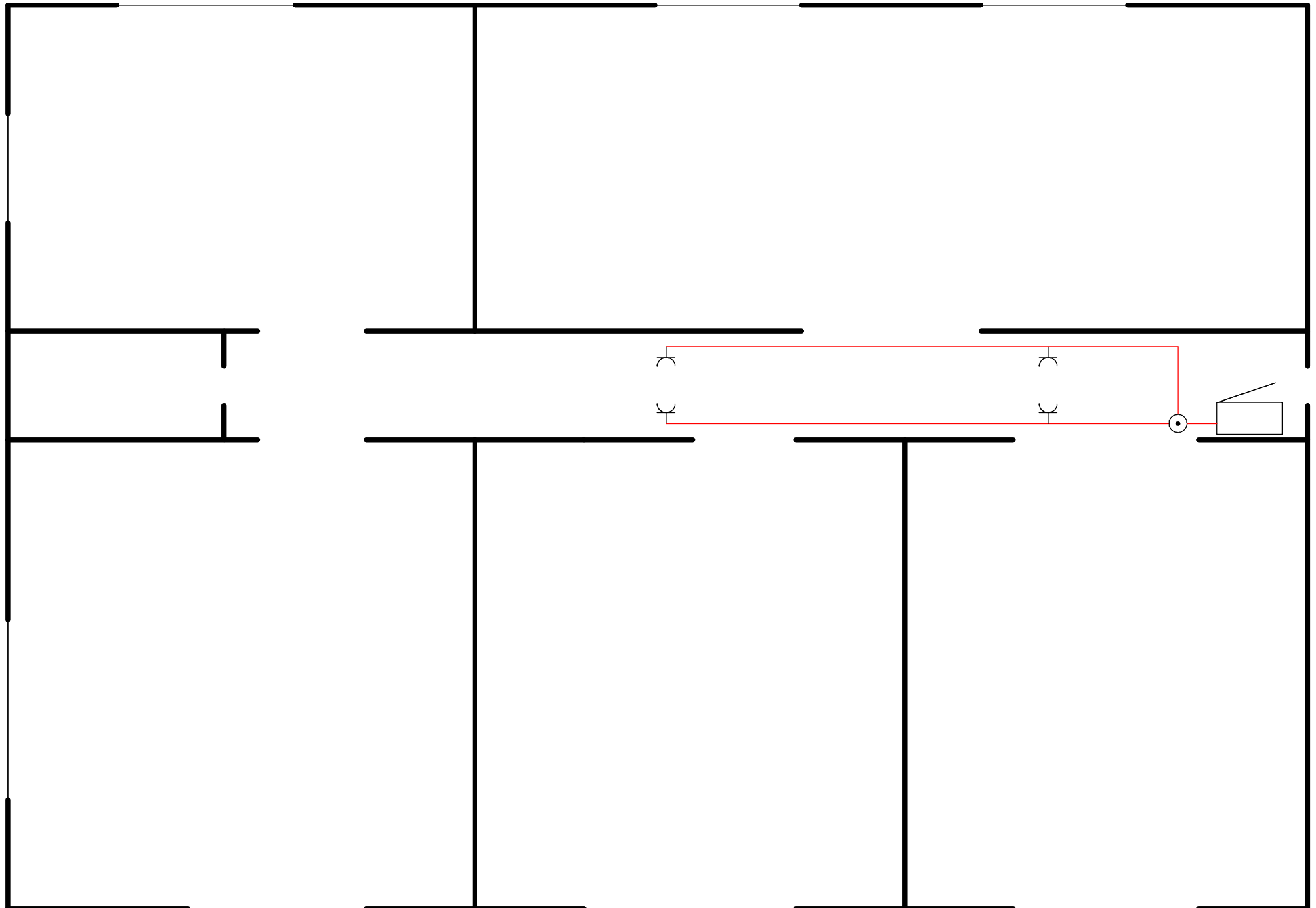
CIRCUITS 2...4 ON BUILDING PLAN



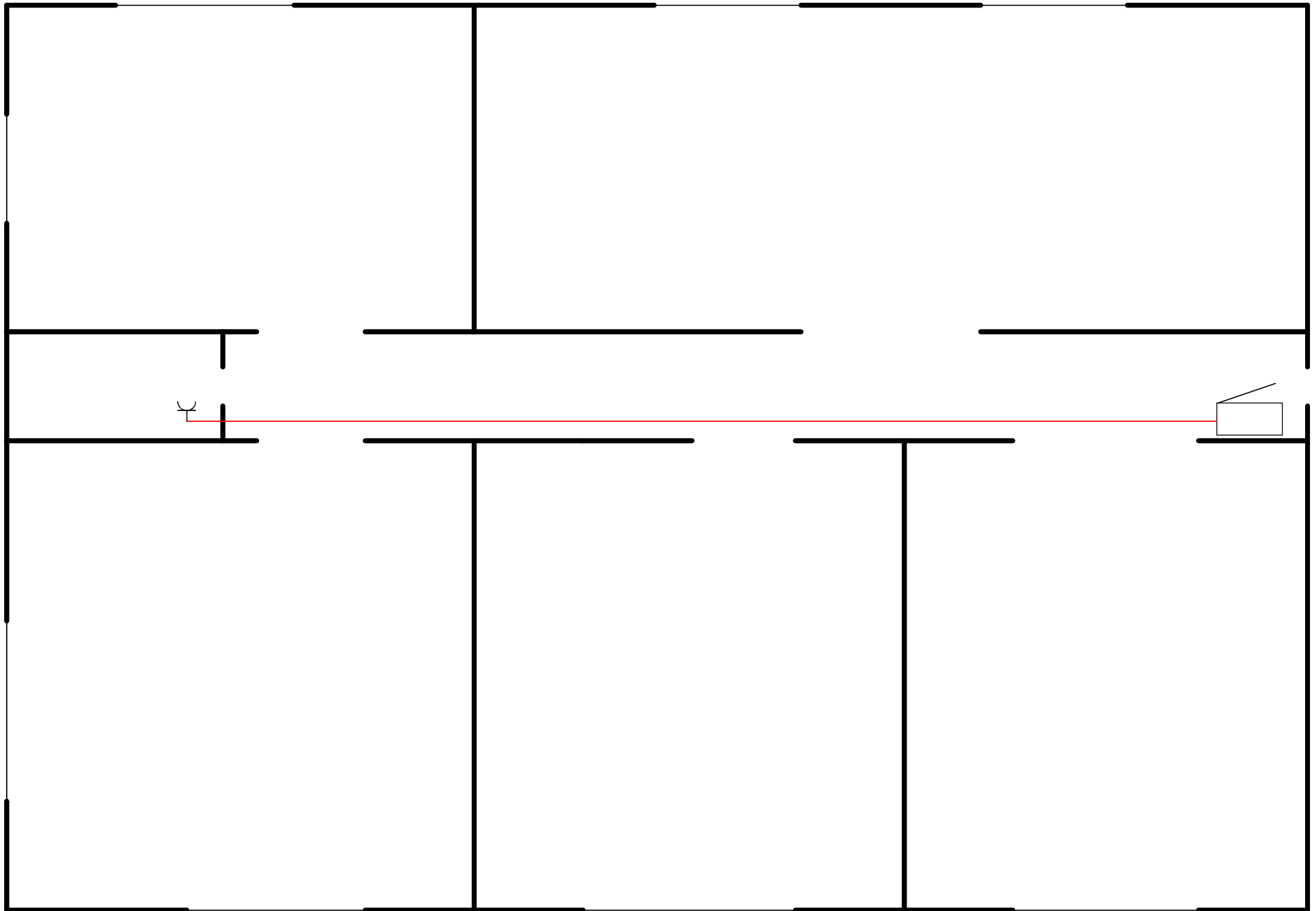
CIRCUITS 5...8 ON BUILDING PLANT



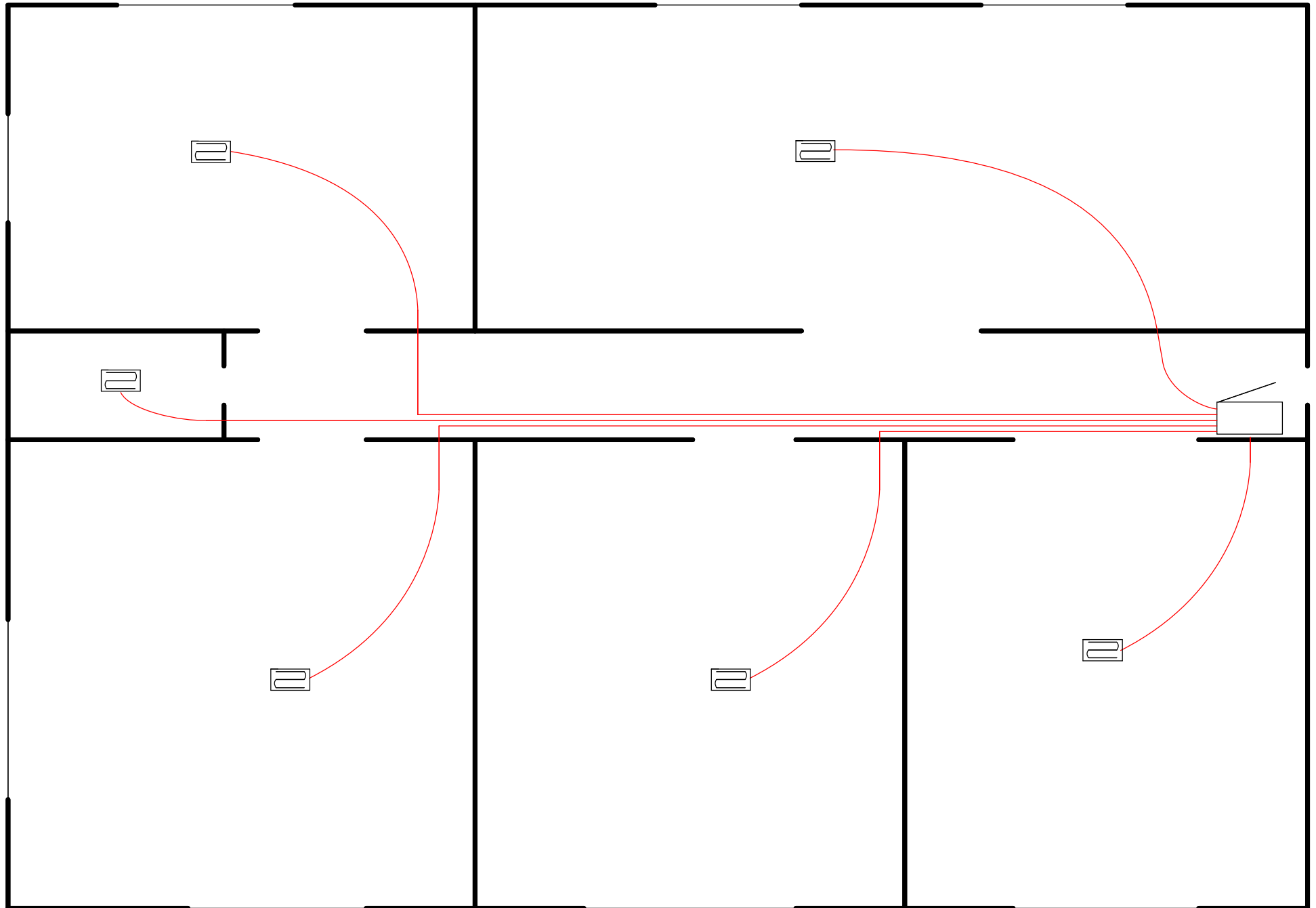
CIRCUIT 9 ON BUILDING PLANT



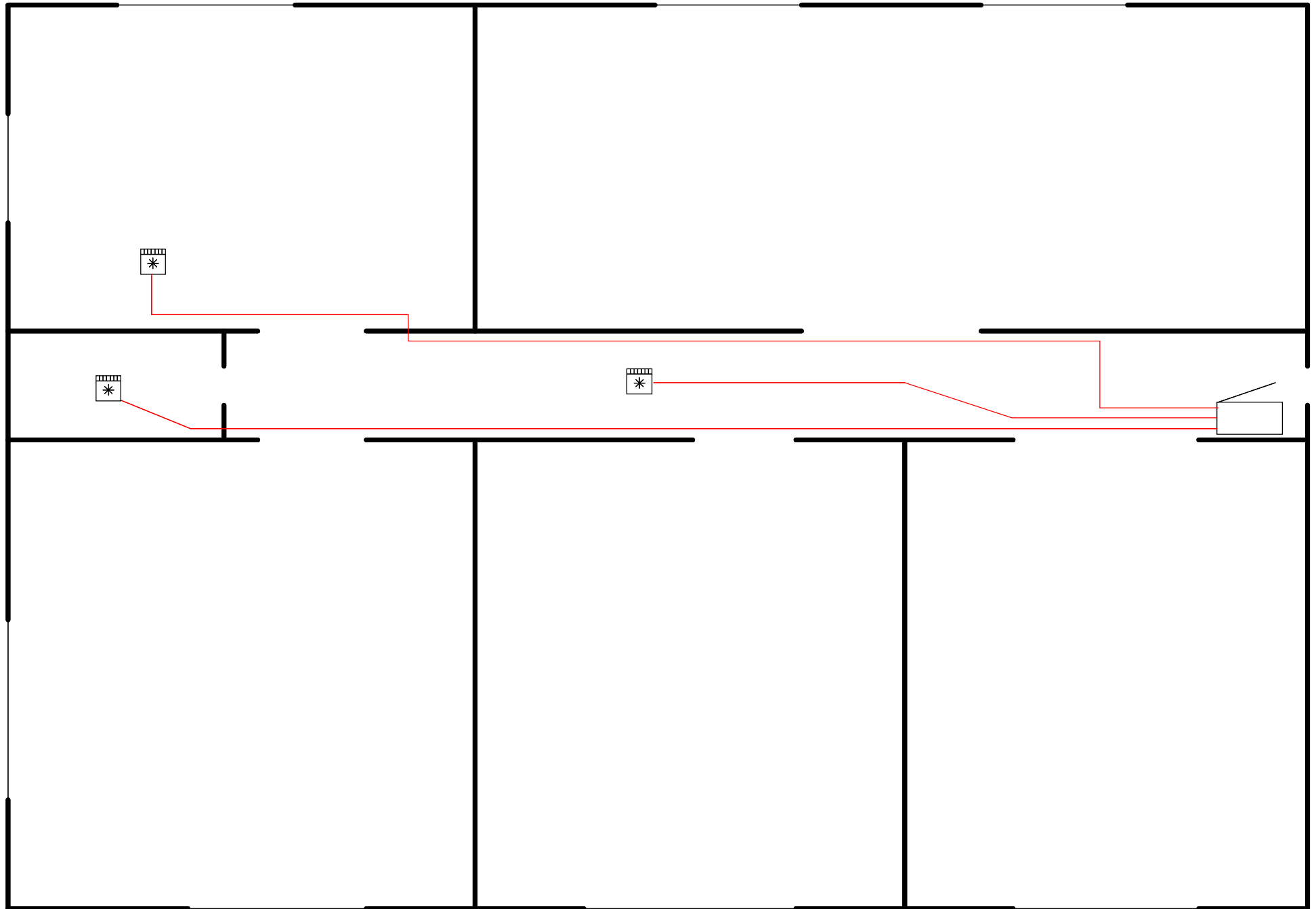
CIRCUIT 10 ON BUILDING PLAN



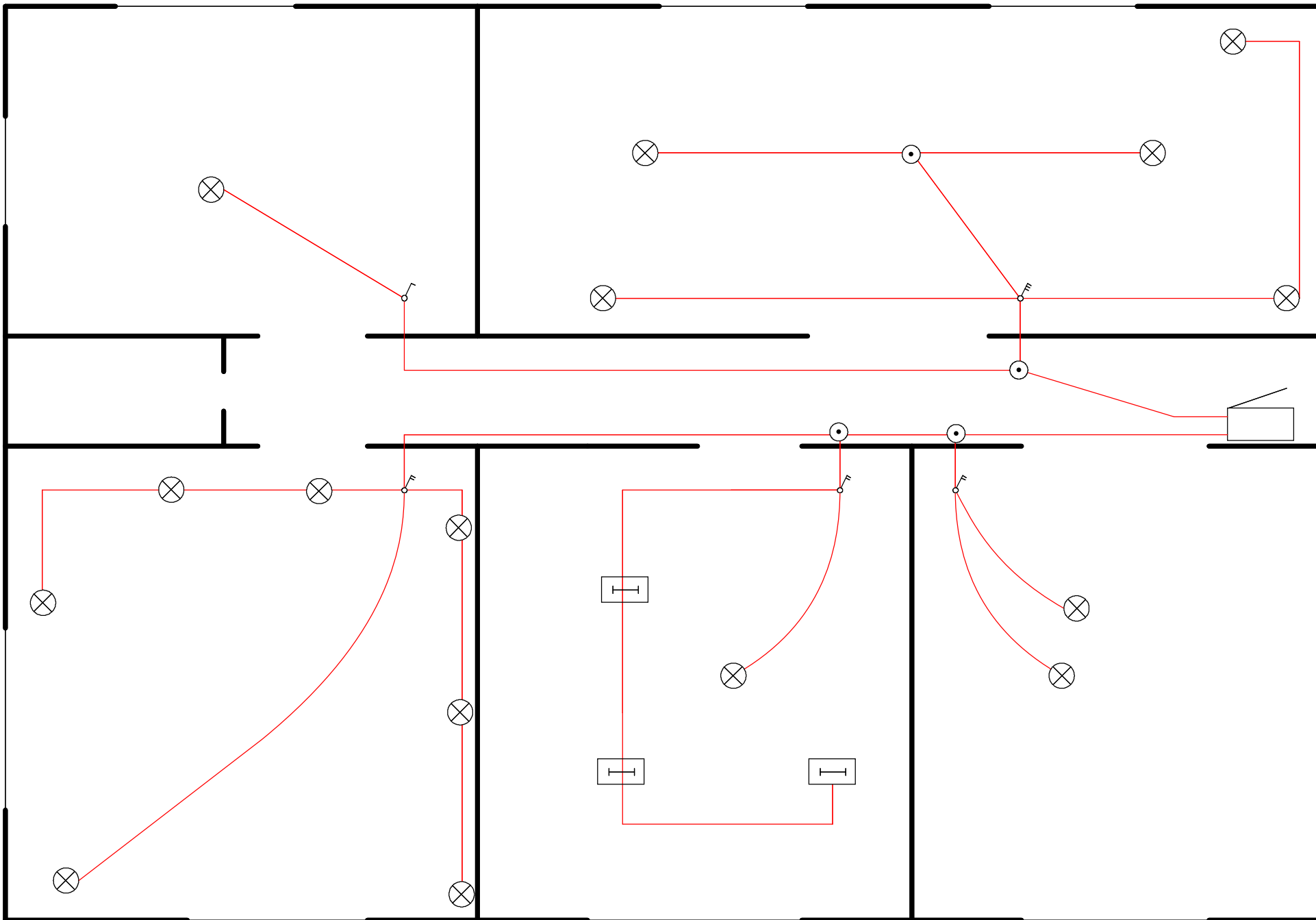
CIRCUITS 11...16 ON BUILDING PLANT



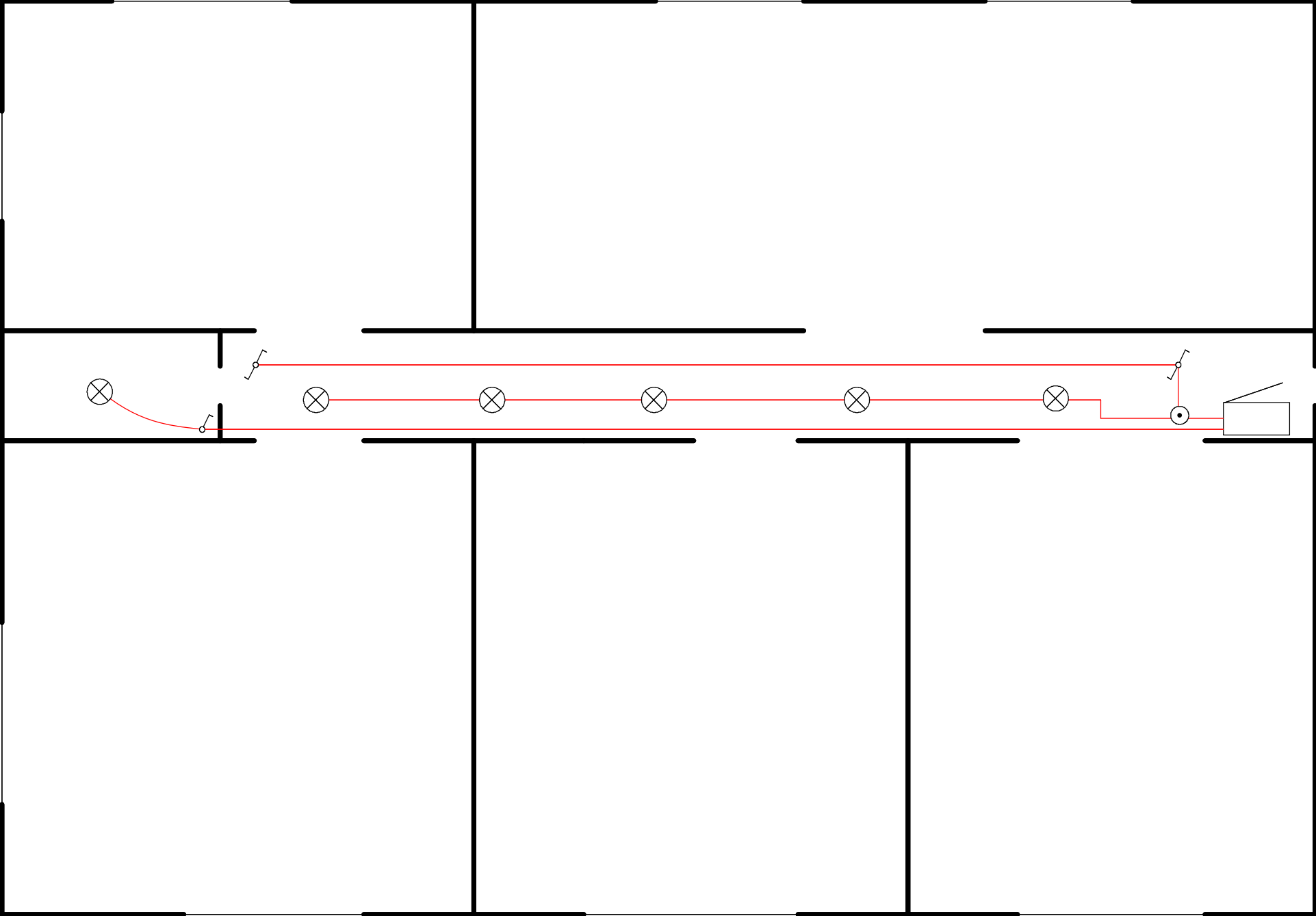
CIRCUITS 17...19 ON BUILDING PLANT



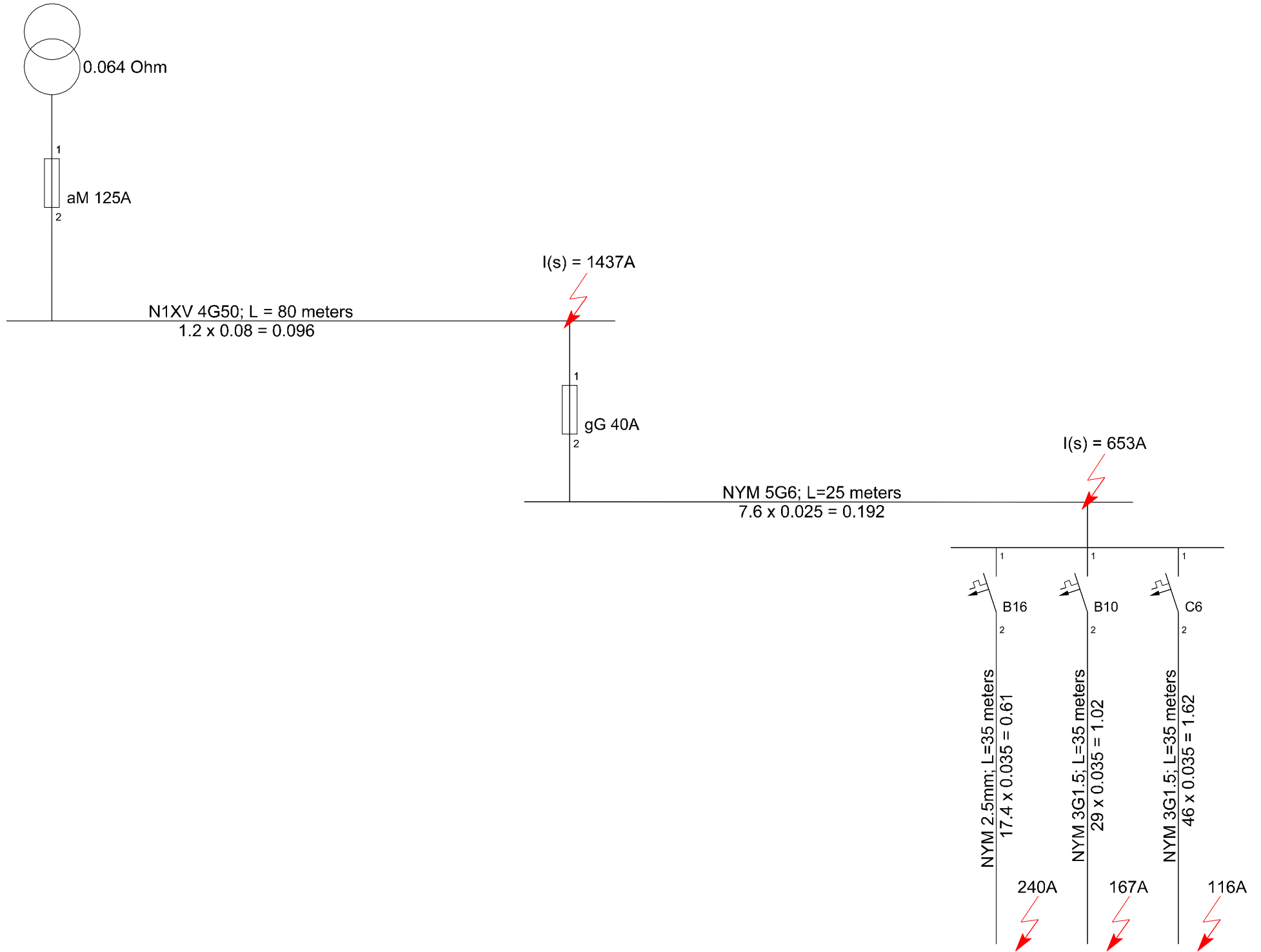
CIRCUITS 20 and 21 ON BUILDING PLAN



CIRCUIT 23 AND 24 ON BUILDING PLANT



SHORT CIRCUIT CALCULATION (FIRE SAFETY)



MATERIALS

Fuse box 63M, plastic	1
Load switch 3x50A 415V	1
10mm FORK busbar 3-phase	12M
10mm FORK busbar L + N (L2)	30M
Busbar N and PE (KNA5.125)	1
Terminal TE3P 4x35 for DIN-rail	1
Circuit breaker 3P for DIN rail B16	1
Circuit breaker 1P for DIN rail B10	3
Circuit breaker 1P for DIN rail C6	6
RCBO 2P for DIN rail B16 / 0.03A	9
RCBO 2P for DIN rail B10 / 0.03A	6
RCD 4P for DIN rail 30mA/25A	1
Transformer 230V to 12V for DIN rail	1
Cable NYM-J 5G2.5	40 meters
Cable NYM-J 3G2.5	540 meters
Cable NYM-J 3G1.5	200 meters
Cable NYM-J 3G1.0	350 meters
Copper wire, yellow-green, 4mm	100 meters
Copper wire, black, 1.5mm	40 meters
Junction boxes, diameter 68mm	70
Schuko sockets 16A IP20	54
Schuko sockets 16A IP44	2
Light switches 1 way	1
Light switches 2 way	2
Light switches 3 way	2
3 way multiway switching switches	2
Flexible conduit	*by installation process
Light fixtures	*by consumer's wishes
Other (nails, terminals)	1