

Erebus Haunted House

Erebus is a four-story haunted house located in Pontiac, MI and has been known as one of the world's largest walkthrough haunted attractions since 2005.

The haunted attraction has a wide variety of props, obstacles, chambers and special effects. This haunted attraction has gained a lot of popularity due to its extravagant nature. Erebus has a lot of resources, tools and manpower, which contributes to its popularity.



Fig. 1: Logo of Erebus Haunted House.

Business

The Erebus haunted house is open from the end of September until the end of October. It is open from 6pm till 1 am Friday and Saturday. On Sunday from 6pm until 11pm and Monday through Thursday it is open from 7pm till 11pm [6]. The Erebus haunted house visit cost \$23 per person or \$17 per person for group of 15 or more. They also have special discount options for group of 100 or more. The age limit to visit the Erebus haunted house is 12 years of age or older, whereas younger than 12 years has to be accompanied by an adult. In the Erebus haunted house, actors always maintain a safe distance from visitors unless they use props to touch patrons and scare them [7].

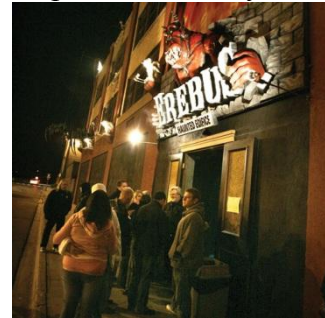


Fig. 2: Entry of Erebus Haunted House

History

Erebus Haunted Attraction opened in 2000 under the ownership of two brothers Edward and James Terebus in what was formerly an abandoned four-story parking garage in Pontiac [1]. The structure was abandoned for nearly 50 years before Erebus, and was used as an indoor junkyard [2]. Erebus is unique because while most haunted attractions in Michigan purchase their props and accessories from the same vendors, Erebus creates their own props in-house so they are all one of a kind and never before seen [1, 2]. Prior to Erebus, the Terebus brothers operated other haunts, most notably the Haunted Gallery, which was based around a mobile trailer.

Ed would approach guests leaving the Haunted Gallery and would ask if they knew of any other haunted houses in the area and the location(s). This led Ed Terebus and his sister to begin the publication of "FEAR FINDER," a seasonal Michigan newspaper style publication that serves as a central hub for all haunted houses in Michigan to advertise. The brothers have over 30 years of experience in the haunted attraction industry and continue to push ground with Erebus [2].



Fig. 3: Erebus Haunted House owners

Attraction

Erebus tends to change their key effects from year to year, but their main theme stays the same. In the beginning of the show, patrons are sent through time by a crazy scientist where they experience almost 12 feet long giant centipede like monster. Patrons pass through many different



Fig. 4: Crazy scientist

times in history as well as many different cultures. Patrons travel through time and then back to present. A few interesting attractions among them are: an ornate temple in India which conceals a rampaging rhino, a primeval jungle full of attacking monkeys, opening and closing walls in a

rune covered catacomb.

Travelling along a cliff face, a moving wall pushes patrons toward a

bottomless pit. In one of the main events, a 6 foot dragon mouth emerges from the gloom and eats the patrons as well as dragging them screaming into the darkness [3].



Figure 6: Dragon's mouth

Erebus haunted house also have attractions like elevator Gags, Pepper's Ghost, drop panels and a massive Tesla Coil. They always add new scenes each year such as last year they buried patrons alive in a pit. These entire attractions make Erebus haunted house into a very interesting and scary place. The actors along the walkthrough push the boundaries of privacy and how to "touch" the visitors without actually laying a hand on anyone by using other creative techniques [8].



Fig. 5: Attacking monkey

Features

The metro Detroit area is home to many haunted houses and Halloween attractions but Erebus tries to differentiate itself from other Michigan haunts. Here are some factors that make Erebus unique. First of all the sheer size of their operation makes this walkthrough quite lengthy. Erebus occupies 100,000 square feet and uses 70,000 of that is used for storing props [5]. Another factor is that it has multiple stories including an elevator and a taller building creates a more ominous atmosphere and increases the fright level. Erebus hires over 70 actors as well as animatronics including a multitude of animals and monsters. Erebus uses these animatronics to bypass the "no-touch" safety rules at most haunted houses as well as other techniques such as dropping bug-like objects from the ceiling or making the structure move. It is all "touching" without really touching anyone [1]. Erebus changes the landscape rapidly as well. They use steep inclines, stairwells, narrow passages, low ceilings and trap doors as obstacles. Erebus uses electronic props as well such as lasers, lights and mirrors to create visual obstruction and manipulation [1].



Awards

2005 - This four story attraction was entered into the Guinness Book of World Records as the World's Largest Walk-Through Haunted Attraction [10].

2009- Click on Detroit voted Erebus the "#1 Best Haunted House in Detroit" [4].

2010- Rated #1 as America's best haunted house [9].

References

1. Armstrong, Ben. "Erebus - 4 Story Haunted Attraction." *HALLOWEENATTRACTIONS.COM*. Hauntworld Inc., 28 May 2005. Web. 20 May 2012. <http://www.halloweenattractions.com/featured_artical/michigan_haunted_house_erebus.cfm>.
2. Armstrong, Ben. *Erebus Article`*. Pontiac: Netherworld Haunted House. PDF.
3. [America's TOP 13 Scariest Destinations 2011](#). *Hauntworld Magazine*. Retrieved May 20, 2012
4. Blog at WordPress.com. "Detroit Area Haunted House." *Haunted Houses In Detroit*. Web. 20 May 2012. <<http://hauntecg.angelfire.com/hvy/haunted-houses-pv.html>>.
5. [Detroit, Michigan Haunted House – Erebus – 4 Story Haunted Attraction](#). *Hauntworld*. May 28, 2005. Retrieved May 19, 2012
6. ["Erebus Haunted House- Dates & Times."](#) hauntedpontiac.com. Retrieved May 19, 2012.
7. ["Erebus Haunted House- Ticket Sales."](#) hauntedpontiac.com. Retrieved May 19, 2012.
8. "Erebus 4 Story Haunted Attraction." hauntedattraction.com. Retrieved May 19, 2012.
9. Haunted House Ratings. "Haunted Houses." *America's Best Haunted House Directory*. Haunted House Ratings. Com, 2011. Web. 22 May 2012. <<http://www.hauntedhouseratings.com/hauntedhouse.cfm?State=MI>>.

10. "World's Largest Walk-Through Haunted Attraction: Erebus - Pontiac, MI." *Erebus 4 Story Haunted Attraction*. Haunted Gallery Enterprises Inc. Web. 22 May 2012.
<<http://www.hauntedpontiac.com/>>.