

Latitude of Constantinople and Rhodes; written by the Learned Mr Greaves, and communicated by the Reverend Dr Smith. 12. Accounts of two Books; 1. FRANCISCI WIL LUGHBEII *Armig. de Historia Piscium Libri quatuor, Jussu & Sumptibus Regiæ Societatis Lond. editi. Totum opus recognovit, coaptavit, supplevit, Librum etiam Primum & Secundum integros adjecit* J. O. RAIUS è Soc. Reg. Oxonii è Theatro Sheldoniano. 1686. Fol. 2. GODEFRIDI BIDLOO, M. D. *Anatomia Humani Corporis. Amstel. Fol. 1685.* 13. *An Index to the Fifteenth Volume of the Phil. Transactions.*

*An Explanation of the Cutts of two Porphyry Pillars in Ægypt.*

**T**AB. 1. Fig. 1. represents the *Obelisk*, or *Aiguillè*, near the *Matarea*, about 3 or 4 miles from *Cairo*. The height of this Pillar is 67 foot: the bigness 7 and  $\frac{1}{3}$ , with the *Hieroglyphic* Character.

oo shews the height of the *Nile's* rising above the superficies of the Earth, when it overflows.

Tab. 1. Fig. 2. The Needle at *Alexandria*.

These Pillars are more fully describ'd in the *Phil. Transf.* Numb. 161. Their Figures, being no where extant that we know of, are here presented to the Reader, who is obliged for them to the Reverend Dr *Huntington*.

*Acus*

*Acus Magnetica variationis, quæ Norimbergæ paucis abhinc annis deprehensa fuit, Observatio anno currente 1685, ibidem ab Observatoribus Dōctore I. G. Volckamero, I. P. Wurtelbaur, & G. C. Eimmart repetita; & Regiæ Societati Lond. à Clariff. D. And. Arnoldo, Norimbergensi, communicata.*

**I**Nventa de novo linea Meridiana, sicut olim, non una, sed pluribus, partim vulgari modo, partim methodo *Heveliana*, partim etiam propria, in planis marmoreis ad libellam decenter exæquatis, diversarum mediocriter longitudinum (prout ex Epistola invitatoria Cl. *Sturmi* tunc edita videre est;) designabatur insuper alia longior in plano exacte horizontali, ad intervallum radii 12. pedum *Noricorum* ductus arcus, pro distinctiori gradus in sua minuta divisione: Locus idem, qui antea, maxime idoneus eligebatur; erat spatium peramplum, sub dio liberrimum, nullisque latentis magnetismi vel ferri vicini fallaciis obnoxium, in horti nempe amæna planitie, cujus areæ quadratæ unum latus ducentos pedes exsuperat: in hujus spatii medio singulæ Meridianæ omni, qua fieri potuit, cura ac circumspeditione investigatæ, ab observatoribus rigidissime examinabantur; & continuis aliquot diebus sub initium mensis *Augusti*, (tempora quidem solstitialia, huic operationi magis accommodata, destinata fuerant, sed inclementia cœli differre coegit) idem consensus Meridianarum, non neglecto tamen respectu tunc temporis declinationis ☉, diversimode explorabatur,

Postea quam de certitudine Meridianarum tali pacto securi redditi, applicatis variis pyxidibus magneticis, tam iis vetustioribus, quæ ante quinquennium huic usui ad-

hibebantur, quam aliis recentioribus plurimis, mediocri quidem longitudinis, quarum maximæ semissem pedis non excedebant, sed gracilioribus & vivacibus, animadvertēbamus, quod mirum, declinationem acus à pristina nec in uno minuto discrepare, sed in quavis meridiana exacte cum priori convenire, ad Occas. scilicet 5°. 5'. An autem interea temporis ulterius processerit, ut nunc in situ retrogrado ejus deviatio deprehensa fuerit, quod certe casu evenisse potuisset, non liquet, cum nec temere istud statuerē, quin in eam sententiam, quod stationarius (procul dubio circularis motus) in eodem puncto permanserit, pronius abire velimus.

Ita D. *Eimmartus* perscripsit ad amicum suum *Andream Arnoldum*, qui isthæc *Regiæ Societati Londinensi*, Fautrici olim suæ, lubens meritoque transmittit.

*A Letter, subscribed W. Tenon, concerning Dr Papin's new Water-Engine.*

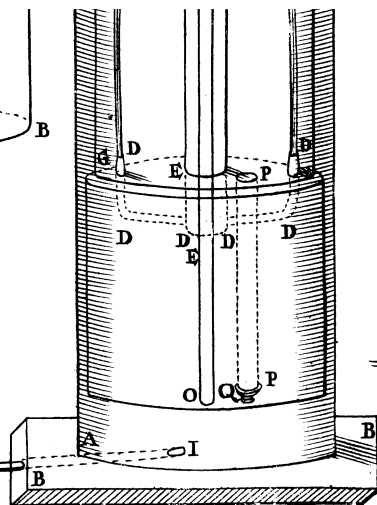
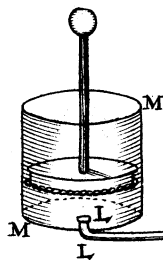
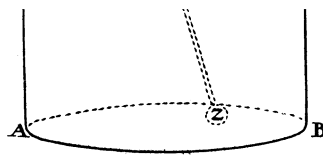
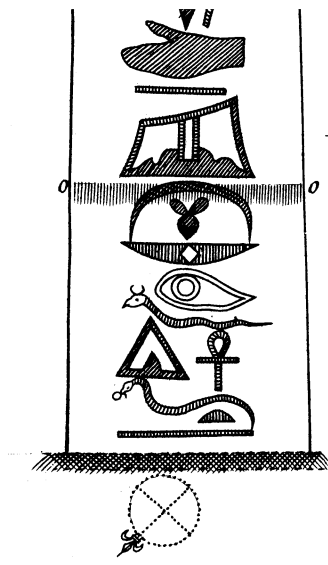
SIR,

THE other day, upon reading in the *Transactions*, a description of the effects of a *Water-Engine*, invented by Dr *Papin*, and propounded as a *Probleme* to find out the contrivance, there came into my mind the following thought. I do not think it is the same with his, nor so good, but such as it is I send you, because variety of fancies gives hints many times to better new inventions.

Tab. 1. Fig. 3. *ABDE* signifies a cylindrical Vessel,  
closed







Murges



*Munges ses sculp.*

Fig. 1.

Fig. 2.

Tab. 1.

Philosophik.  
Transact.  
Numb. 178.



Fig. 3.

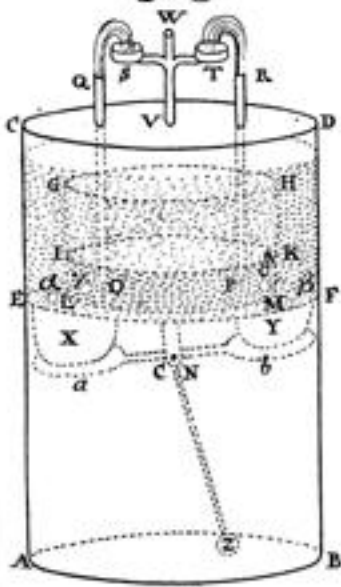
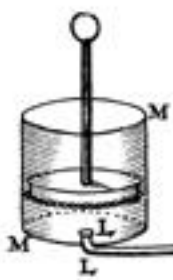
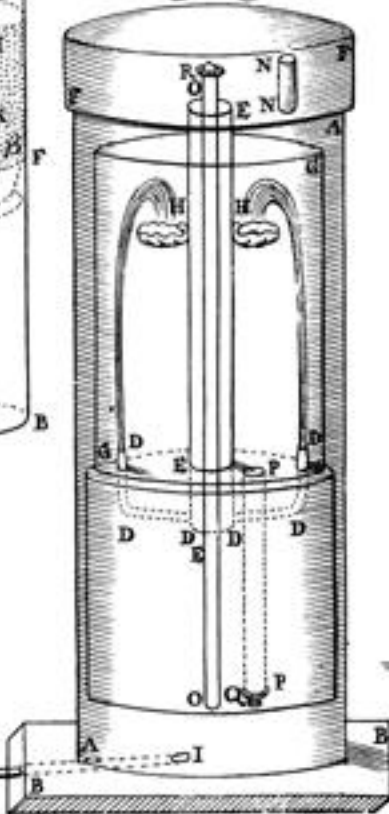


Fig. 4.



Murgessius sculp.