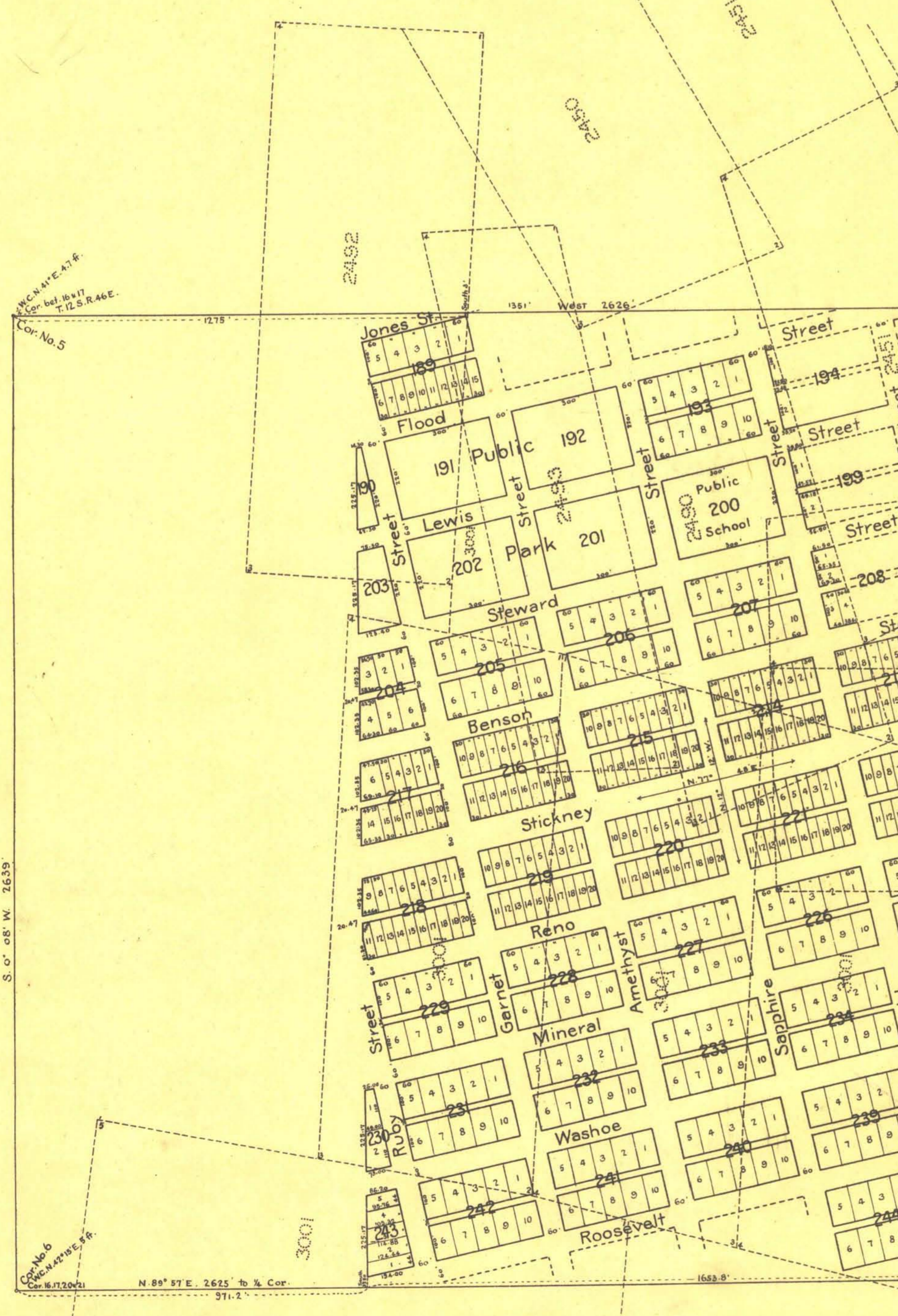
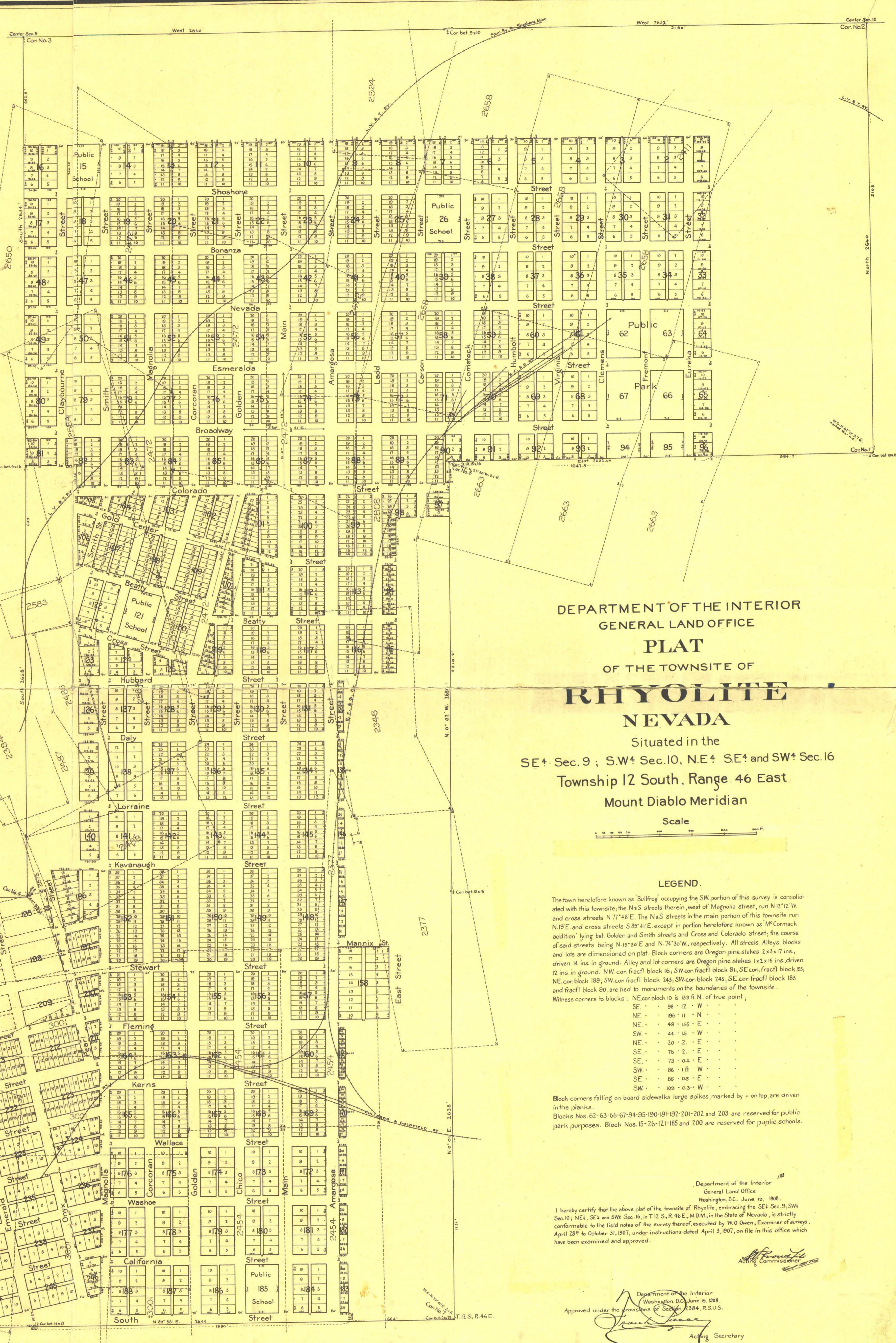


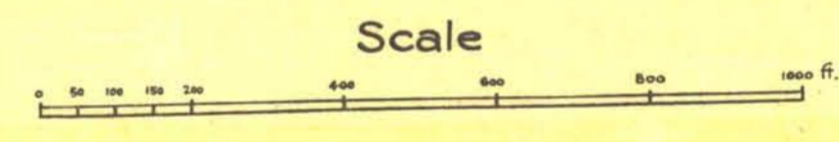
List of Mineral Claims in Townsite of Rhyolite.

NAME	NO. OF SURVEY
Slate Bank	2658
Big Strike Extension	
Agas Fraction	
Yankee Girl	
National Bank	2663
Big Strike	
Lawrence	
Anna	3001
Esther	
Good Hope	
Good Hope Fraction	
Iola	
Flora	
Margaret	
Daisy & Annetta	
Midway	2472
Midway Fraction	
Little Marie	
Black Queen	
Yankee Girl No. 2	
Sang de Cristo	
Big Four Nos. 1-2-3 & 4	2454
Golden Scepter	2584
Golden Scepter No. 2	
Tramp No. 1	2451
Tramp Extension	
Gem Fraction	2377
North Star	
Yankee Girl Fraction	2924
Over Sight	2808
Hardscrabble	2348
Virginia	2487
Louisville	2384
Gibraltar	2575
White Monument	2650
Cyclops	2585
Gold Wedge	2583
Equitable	2488
Sidewinder	2450
Scorpion	2411
Cornet	2492
Wellington	2489
Diamond Hitch	2490
Le Roi	2493

The above are Mineral Claims



DEPARTMENT OF THE INTERIOR
 GENERAL LAND OFFICE
PLAT
 OF THE TOWNSITE OF
RHYOLITE
NEVADA
 Situated in the
 SE¹ Sec. 9 ; S.W¹ Sec. 10, N.E¹ SE¹ and SW¹ Sec. 16
 Township 12 South, Range 46 East
 Mount Diablo Meridian



LEGEND.

The town heretofore known as Bullfrog occupying the SW portion of this survey is consolidated with this townsite; the N & S streets therein, west of Magnolia street, run N 12° 12' W. and cross streets N 77° 48' E. The N & S streets in the main portion of this townsite run N 13° E. and cross streets S 89° 41' E. except in portion heretofore known as McCormack addition lying bet. Golden and Smith streets and Cross and Colorado streets; the course of said streets being N 15° 30' E. and N 74° 30' W., respectively. All streets, alleys, blocks and lots are dimensioned on plat. Block corners are Oregon pine stakes 1 1/2 x 1 1/2 ins. driven 12 ins. in ground. Alley and lot corners are Oregon pine stakes 1 1/2 x 1 1/2 ins. driven 12 ins. in ground. SW cor. fract'l block 16; SW cor. fract'l block 81; SE cor. fract'l block 85; NE cor. block 189; SW cor. fract'l block 143; SW cor. fract'l block 245; SE cor. fract'l block 183 and fract'l block 80 are fixed to monuments on the boundaries of the townsite.

- Witness corners to blocks:
- NE cor. block 10 is 15 1/2 ft. of true point,
 - SE - 88 - 12 - W -
 - NE - 196 - 11 - N -
 - NE - 49 - 155 - E -
 - SW - 44 - 15 - W -
 - NE - 20 - 2 - E -
 - SE - 76 - 2 - E -
 - SE - 73 - 04 - E -
 - SW - 86 - 1 ft. W -
 - SE - 88 - 03 - E -
 - SW - 105 - 03 - W -

Block corners falling on board sidewalks large spikes marked by + on top, are driven in the planks.
 Blocks Nos. 62-63-66-67-94-95-190-191-192-201-202 and 203 are reserved for public park purposes. Block Nos. 15-26-121-185 and 200 are reserved for public schools.

Department of the Interior
 General Land Office
 Washington, D.C., June 19, 1908
 I hereby certify that the above plat of the townsite of Rhyolite, embracing the SE¹ Sec. 9, SW¹ Sec. 10, NE¹ SE¹ and SW¹ Sec. 16, in T. 12 S., R. 46 E., M. 10 M., in the State of Nevada, is strictly conformable to the field notes of the survey thereof, executed by W. O. Owen, Examiner of Surveys, April 28th to October 31, 1907, under instructions dated April 3, 1907, on file in this office which have been examined and approved.

Approved under the provisions of Section 2384, R.S.U.S.
 Acting Secretary