

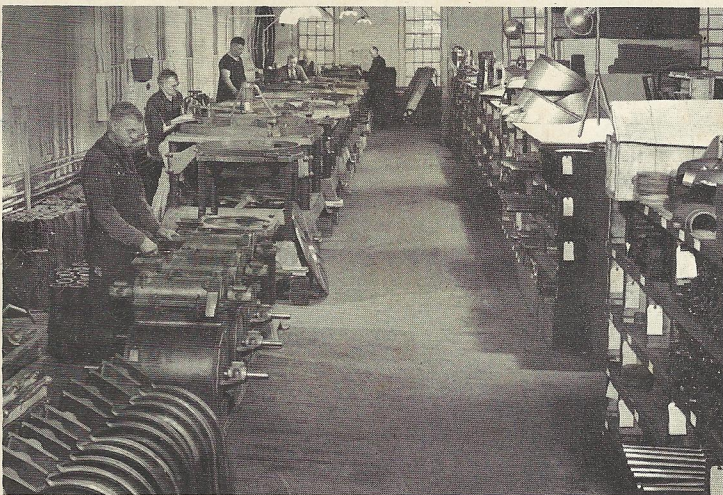
Engelberg — the finest quality

The Engelberg Huller Company of Syracuse, New York, was organized in 1888 for the purpose of refining the mechanics, and increasing the efficiency, of the original Evaristo Engelberg coffee huller. Although the fundamentals of the coffee huller have remained unchanged, Engelberg engineering and improved metals have produced an infinitely superior machine. Quality manufacturing standards have been established and improvements in design incorporated consistently to insure the highest standard of performance.

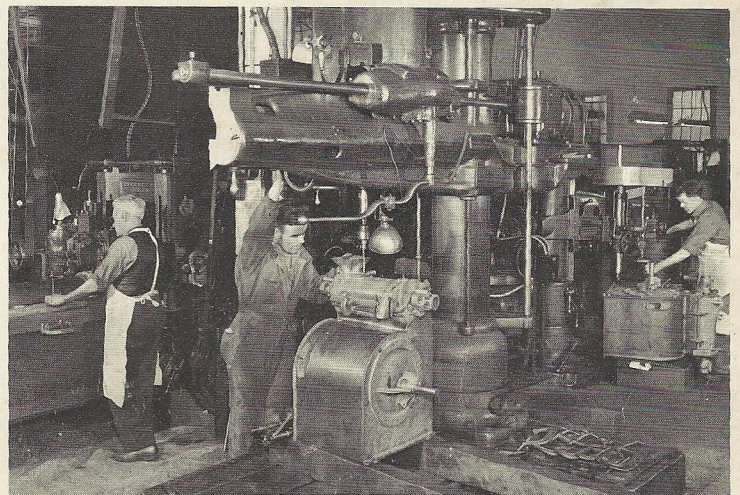
The Engelberg plant is equipped with all modern machine tools essential to precision in production operations.

Engelberg coffee hullers are sought by coffee growers, not only for their efficiency, capacity, and quality-processing, but because of their dependable trouble-free service through successive seasonal runs. Machines are furnished with anti-friction bearings of either the ball or roller type, and are available either in the flat belt drive pulley or V-belt sheave.

All coffee huller parts are accurately machined for interchangeability and replacement parts are carried in stock by Engelberg dealers everywhere.



Assembly line at the Engelberg Plant. At the right is shown a section of the stock racks where thousands of interchangeable parts for coffee and rice processing machinery are stored for assembly and for dealers' service requirements.



One of the departments of the Engelberg machine shops, where the most highly skilled mechanics are employed.

Bulletin K-CNr

The ENGELBERG HULLER CO., Inc.
SYRACUSE, N. Y., U.S.A.

NEW YORK OFFICE: 75 WEST STREET

WORLD LEADER IN RICE AND COFFEE PROCESSING MACHINERY