

Bulletin Commercial

Mardi, 26 novembre 1907.

COTON.

Marché de la Nouvelle-Orléans

Table with columns: Type of cotton (Low Ordinary, Good Ordinary, etc.), Price per bale, and date.

Marché de la Nouvelle-Orléans

Table with columns: Month (Janvier, Février, etc.), Price per bale, and date.

Marchés divers.

Table with columns: Location (San Antonio, Mexico, etc.), Price per unit, and date.

Marché de New-York.

Table with columns: Type of cotton (Cotton-Middling, etc.), Price per bale, and date.

Marché de New-York.

Table with columns: Month (Janvier, Février, etc.), Price per bale, and date.

Mouvement du COTON.

Table with columns: Type of cotton (RECUE, NET, etc.), Quantity, and date.

Marché de Liverpool.

Table with columns: Type of cotton (Cotton-Middling, etc.), Price per bale, and date.

Marché du Havre.

Table with columns: Type of cotton (Cotton-Middling, etc.), Price per bale, and date.

SUCRE ET MELASSE.

Table with columns: Type of sugar (Jobbing, etc.), Price per unit, and date.

FRUITS ET NOIX

Table with columns: Fruit type (POMMES, ORANGES, etc.), Price per unit, and date.

PRODUITS DE LA CAMPAGNE.

Table with columns: Product type (NOUVEAUX barils de sucre, etc.), Price per unit, and date.

RIZ.

Mouvement du Riz.

Mouvement du Riz.

Table with columns: Type of rice (Récettes, etc.), Quantity, and date.

FARINES.

Table with columns: Type of flour (Patente, etc.), Price per unit, and date.

GRAINS ET FOURRAGES.

Table with columns: Grain type (MAIS, AVOINE, etc.), Price per unit, and date.

GRAINE DE COTON

Table with columns: Cotton seed type (MAIS, AVOINE, etc.), Price per unit, and date.

ET SES PRODUITS.

Table with columns: Cotton product type (Livre, etc.), Price per unit, and date.

FRUITS ET NOIX

Table with columns: Fruit type (POMMES, ORANGES, etc.), Price per unit, and date.

PRODUITS DE LA CAMPAGNE.

Table with columns: Product type (NOUVEAUX barils de sucre, etc.), Price per unit, and date.

PROVISIONS.

AU BOARD OF TRADE.

Table with columns: Provision type (MEAT, BACON, etc.), Price per unit, and date.

EPICIERIES.

Table with columns: Grocery type (RIZ, etc.), Price per unit, and date.

FUTURES.

Table with columns: Future type (Janvier, etc.), Price per unit, and date.

BEURRE.

Table with columns: Butter type (Fancy, etc.), Price per unit, and date.

NAVAL STORES.

Table with columns: Naval store type (Essence, etc.), Price per unit, and date.

MARCHANDISES DIVERSES

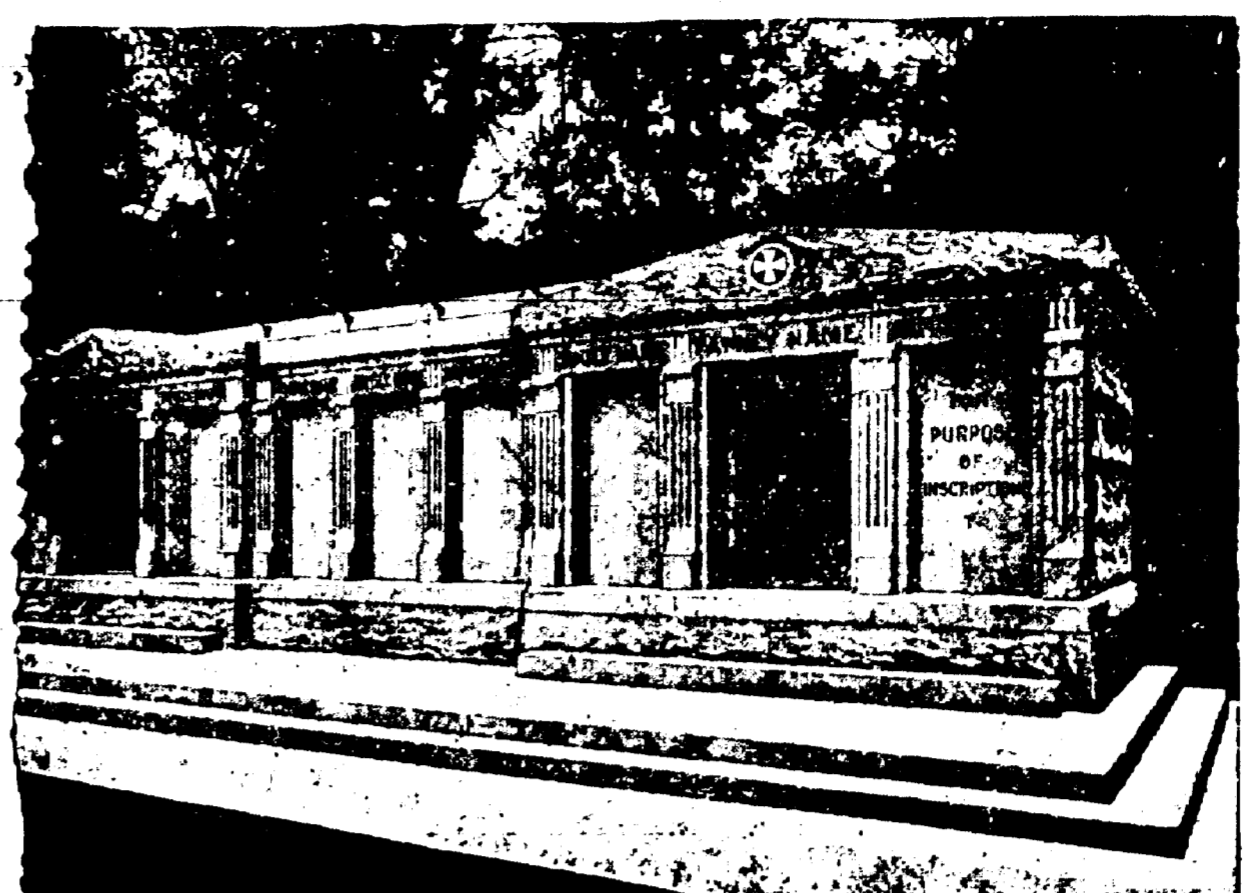
Table with columns: Diverse goods type (Pailles, etc.), Price per unit, and date.

GIBIER.

Table with columns: Game type (Woodcock, etc.), Price per unit, and date.

OHARBON

Table with columns: Coal type (PITTSBURG, etc.), Price per unit, and date.



A VENDRE - Les caves dont on voit ci-dessus la gravure. Ils sont en granit, au cimetière St-Louis No 3, Avenue de l'Esplanade.

Advertisement for Paul M. Schneidau, Agent, La Monongahela River Consolidated Coal and Coke Co.

Advertisement for W. G. Tebault, Président de la Ligue Anti-Tuberculeuse de la Louisiane.

Advertisement for Union Sanitary Excavating Co., Fosses, Voies, Lieux d'Alsance Souterrains, Etc.

Advertisement for Avis de Successions, including notices for Henry Millard and George Amann.

Advertisement for Avis aux Océaniers, including notices for F. J. May and J. S. Landry.

Advertisement for Annonces Judiciaires, including notices for Cour Civile de District.

Advertisement for Avis de Successions, including notices for Cour Civile de District.

CHEMINS DE FER

"OZONE ROUTE"

Advertisement for Excursions \$1.00 Aller et Retour Dimanches et Mercredis.

Advertisement for Southern Pacific Steamship Line.

Advertisement for Q. & C. New Orleans and Northeastern Railroad.

Advertisement for Illinois Central Railroad.

Advertisement for L'Ecole de Culture Physique Pons.

Advertisement for Ligne Française, Compagnie Générale Transatlantique.

Advertisement for Nouvelles-Orléans-Havre, Ligne Directe.

Advertisement for Illinois Central Railroad, A Norfolk et retour \$45.10.