

A photograph of a tunnel interior. The walls are lined with reddish-brown bricks, forming a semi-circular archway. The floor is a smooth, light-colored surface. At the far end of the tunnel, a bright light source creates a strong glow, illuminating the scene. The text "Erken Roma İnce Cidarlı Seramikleri" is overlaid in the center in a golden, serif font with a reflection effect.

Erken Roma İnce Cidarlı Seramikleri



ROMAN POTTERY FOUND AT HEADINGTON, NEAR OXFORD.

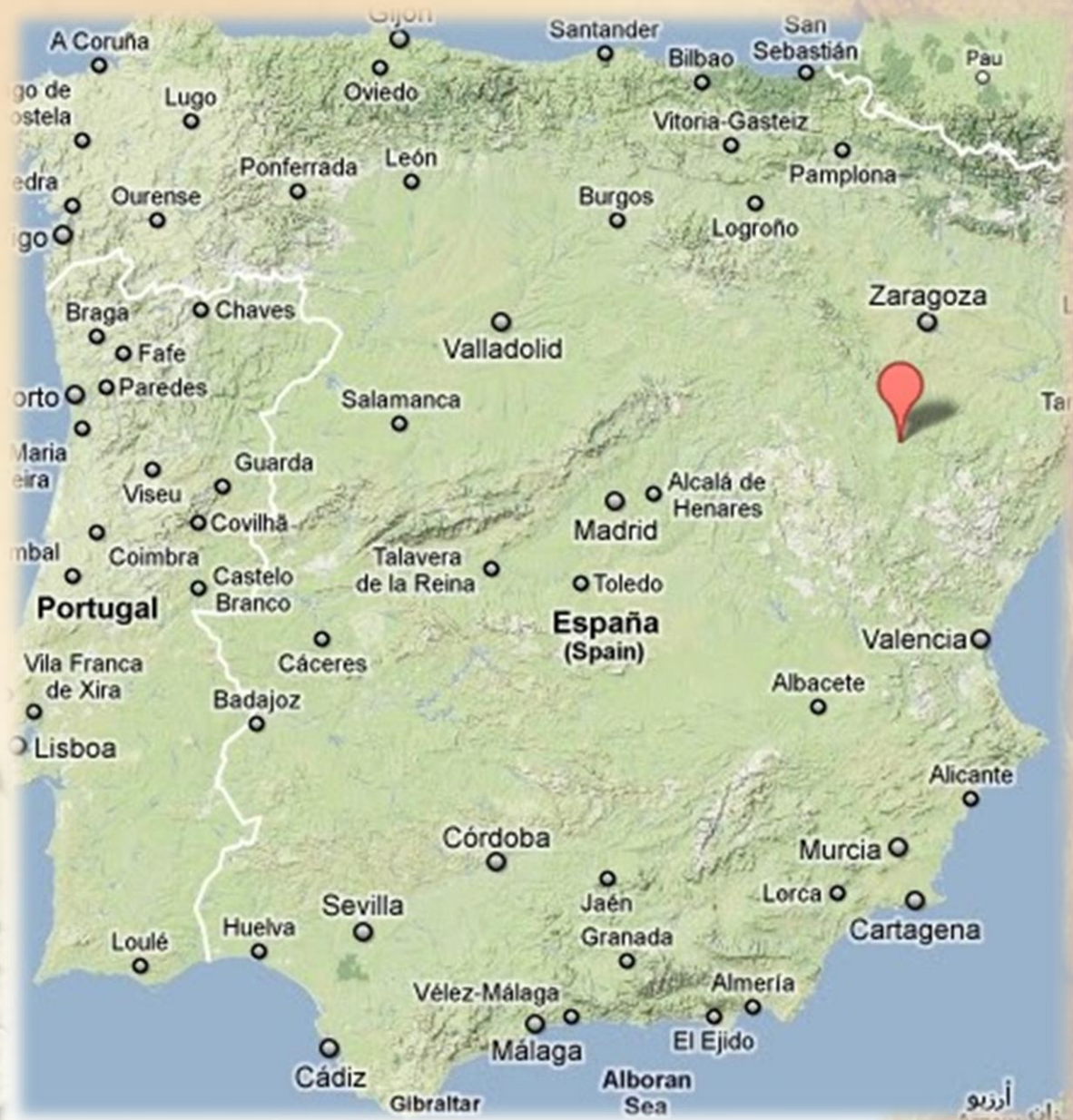
ITALYA



*Prof. Andrea Carandini,
Università la Sapienza, Roma*

İSPANYA

*Maria Teresa Marabini Moevs,
İtalyan Profesör*



ALMANYA

M. Vegas

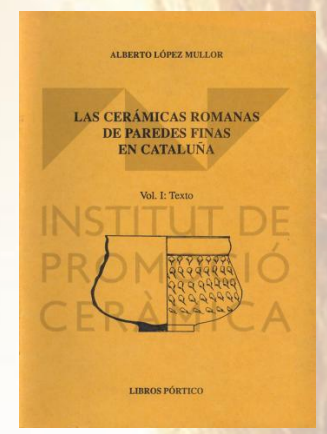


Modern Germany

KATALONYA (İSPANYA)



PORTKEİZ VE İSPANYA



Alberto Lopez Mullor

AVUSTURYA



Magdalensberg



Eleni Schindler-Kaudelka

İNGİLTERE VE KUZEY BATI İLLERİ

Greene (?)



A. Ricci tarafından liste yapıldı.



İtalyan atölyelerinde üretilen İnce Cidarlı seramik kaplar M.Ö.2. yüzyıldan M.S.4. yüzyıla dek devam etmiştir. Ravenna yakınlarındaki atölyelerde imal edilen ve büyük bir potansiyelle ihraç edilen kaplar M.S.1.yüzyıl ağırlıklıdır. Bu grubun ana üretim ve dağıtım merkezi, Yukarı Adriyatik'ten Po vadisine dek uzanan geniş alanda yer alan atölyelerde üretim yapan İtalya olarak belirlenmektedir. Sutri, Syracuse ve İspanya batıdaki diğer önemli üretim merkezleri sayılmaktadır.





THE ARCHAIC GREEK AEGEAN
 0 100 200 300 km



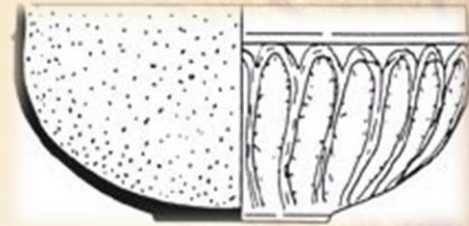
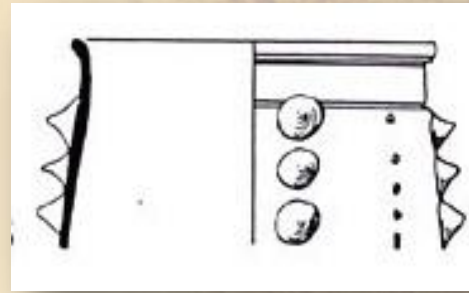
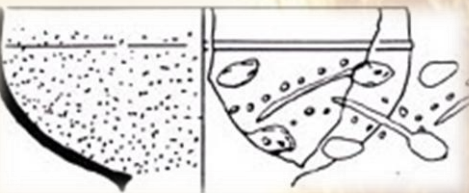
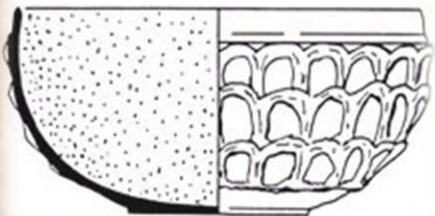
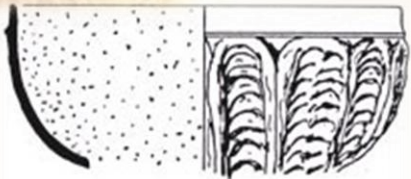
Augustus M.Ö.27-M.S.14

BEZEME

D9.2037:2



Nokta dekore Beher
(M.Ö. 150 - 50)





A5 242 14 1 1



A5_272_1_7



A5_272_1_6



A5_131_10_1_8



A5_220_14_1_3



A5_131_10_1_5



A5_272_1_10

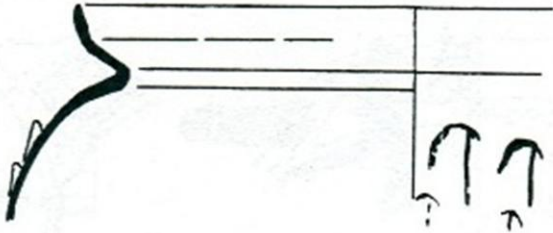


A5_280_18_1_10

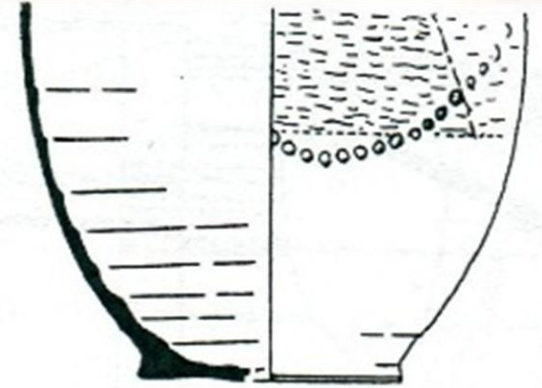
Pompeipolis (Kastamonu), ince cidarlı fincan dekorasyonları.

İlk “dikenler” Geç Cumhuriyet (M.Ö.107-30) ve Augustus (M.Ö. 63-M.S. 14) dönemlerinde ki beher parçalarında görülür. Yuvarlak, küremsi bir tipte olan 1501 no’lu kap ilk örneğidir(M.Ö.geç 1.yy). Diğer bir örnek 1500 no’lu Orta İtalya’ya ait bir kaptır. Rotroff’un yaptığı bir araştırmaya göre daha sonra “net-bardak” soyu olarak adlandırdığı 1502 no’lu kabın üzerinde döngülerin ve beyaz noktaların eklendiğini görmekteyiz. Bu, paralel Küçük Asya serisi erken bir ürün olabilir.

1501 (P 8937)



1500 (P 32017)



1502 (P 17412)



Mayet XXVII. İnce cidarlı fincan. Beyaz zeytin ağacının yapraklarından bir çelenk barbotin tekniğinde dekore edilmiş. Augustus ve Tiberius döneminin tipik bir örneğidir.



İnce cidarlı fincan. Mayet formu XLII. Karnından barbotin ölçekli dekorasyon görülmektedir. Boylamsal oluk ile oval göbek, dar ayak ve bant kolu, dışa dönük kenar. Yapıştırın dolayı okside ateş, süngerimsi bakar ve kuvars nadir mikro fosiller ve piritler, kahverengimsi grog(şekerli-su,alkol-su karışımı?), mika ve feldspat ötesinde içerir. Bu nadir dahil olmayan kil nodüller ve kapanımlar veya demir oksit parçacıkları da içerir. İnce ve çok yıpranmış bir kayma gösterir. Bu sağlam içme cam Baetica geliyor. İber Yarımadası'nda pek çok örneği vardır.



M.S. 120 yılında Roma İmparatorluğu'nun Hispania Baetica bölgesi. (Modern İberia)

ÜRETİM (FABRİK) ÖZELLİKLERİ

Kil: oldukça sıkı-sert ve gevrek bir yapıya sahip olan kilin bünyesinde, irili ufaklı kireç tanecikleri içermektedir. Kireç tanecikleri yanı sıra bazı kaplarda çok az miktarda altın, mika zerrecikleri bulunmaktadır. Kumlandırılmış yüzeyli kâselerde kullanılan kıl ve astar bünyesinde çok küçük kuartz ve kireç tanecikleri bulunmaktadır. Gri fırınlanmış örneklerinin yanında, kahverengimsi kırmızı, kırmızımsı sarı, açık kırmızımsı kahverengi olmak üzere oldukça farklı renklere sahiptir.



Killer metal oksitlerle karışık bir şekilde bulduklarından doğal olarak renklenmiş durumdadırlar. Ayrıca organik maddeler de ihtiva eder. Kilin saf olması halinde rengi beyaz olur ve kaolen adını alır. Bunun ötesinde killerin renkleri sarı, pembe, kırmızımsı, mavimsi gri, yeşil ve siyahımsı olabilir. Kilin rengi içinde bulunan maddeler hakkında fikir vermektedir.

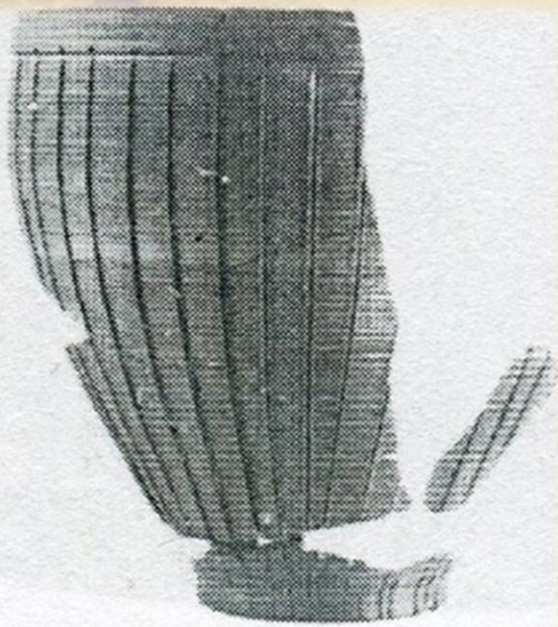
Kilde limonit bulunması halinde rengi esmerdir.

Kilde demir peroksit bulunması halinde rengi kırmızıdır.

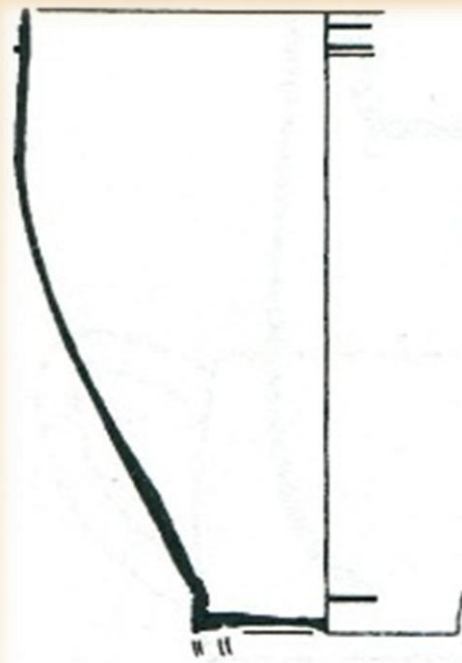
Kilde manganez bioksit bulunması halinde rengi siyahtır.

Kilde organik maddeler bulunması halinde menekşe rengindedir.

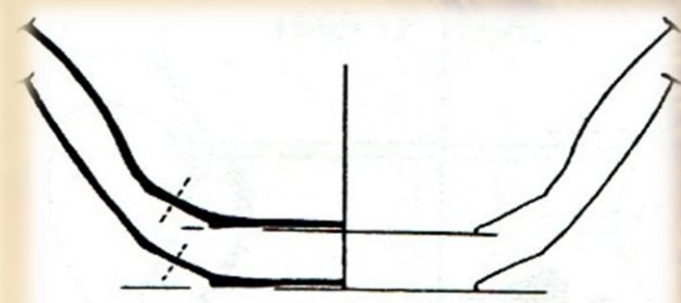
Bununla beraber, kilin pişmeden evvelki rengi piştikten sonrada aynı renkte kalacağını göstermez. Çünkü oksitlerin yüksek ısı derecelerinde renkleri değişir.



1524 (P 17220)



1524 (P 17220)

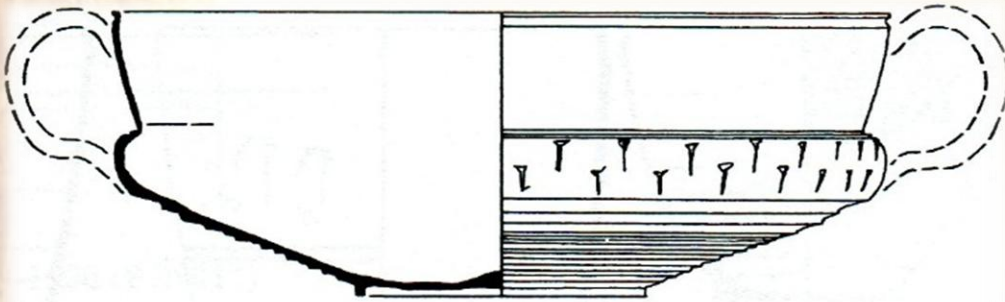


1560 (P 22077)

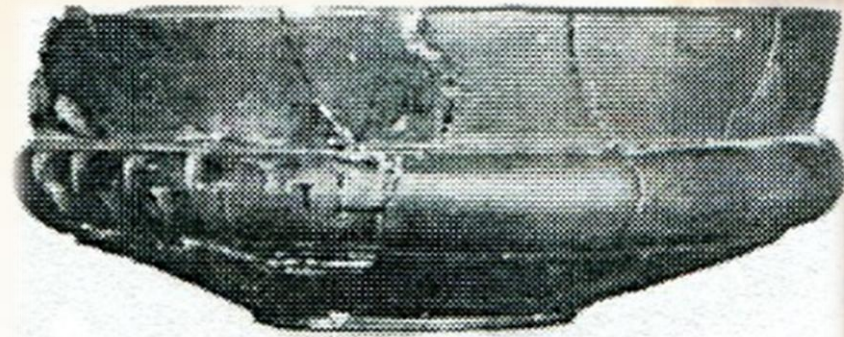


1529 (P 22462)

"kabuğu" çok ince taneli ve temiz kırma ince gümüş mika ve kireç lekeleri içermektedir.



1537 (P 19176)



1537 (P 19176)

Astar: Daldırma tekniđi ile ince olarak yapılmaktadır. Genel olarak metalik ve parlak görünümlüdür. Kaplar büyük çođunlukta turuncudan kızıl kahverengiye, parlak turuncu, kahverengi sıklıkla alacalı astarlıdır. Turuncu ve kahverengi nazaran daha az olmakla birlikte gri ve tonları da kâselerde kullanılmıştır. Ancak gri astar özellikle kavanoz grubu için tercih edilmiş gibi görölmektedir.

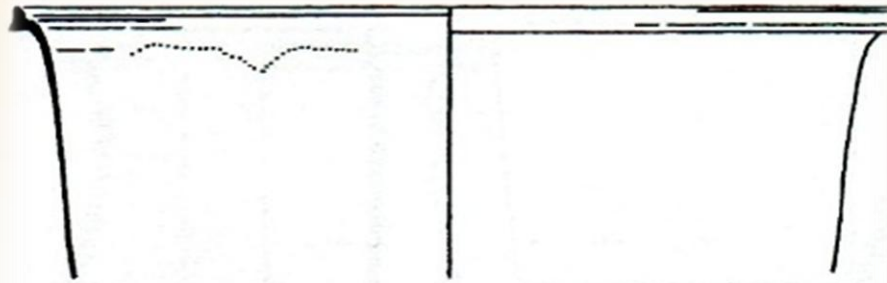


Silisyum Kuartz

KAP FORMLARI

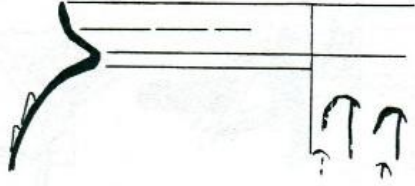
Parlak Gri Seramikler

1499: Küçük dairesel ağız ve düşük, ince ayaklı, yuvarlak karınlı sürahi formudur. Kili hafif mikalı, donuk kahverengimsi gri, dış kısmı koyu gri ve hafifçe parlatılmış (soluk çark izleri ve oldukça ipeksi bir yapı), muhtemelen metal ürünlere öykünme olarak yapılmıştır. Kesin kaynağı belli olmamakla birlikte 1536 numaralı kap ile aynı seramik türü olduğu söylenebilir. M.Ö 1.yy'ın ilk yarısında görülür.

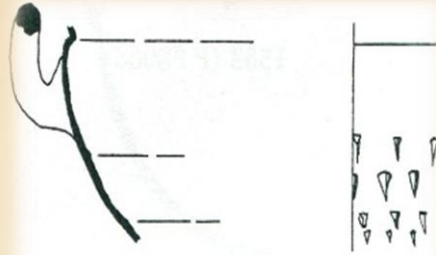


1536 (P 32811)

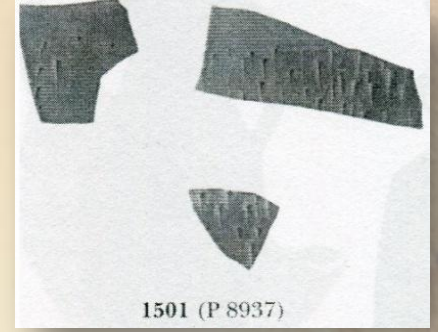
Yuvarlak Gövdeli Bardak / Kavanozlar: M.Ö. Orta-Geç 1. Yüzyıl Türleri



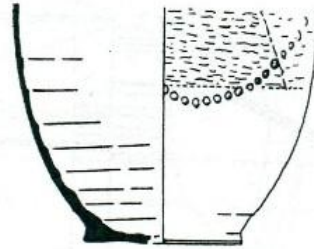
1500 (P 32017)



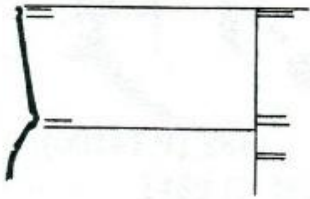
1535 (P 32180)



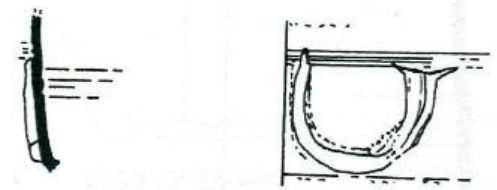
1501 (P 8937)



1502 (P 17412)



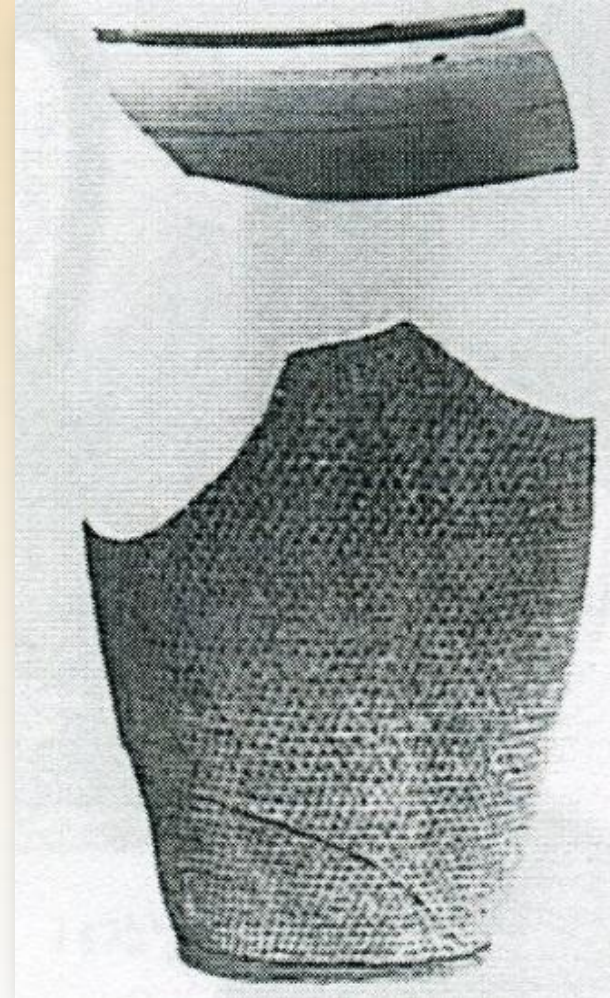
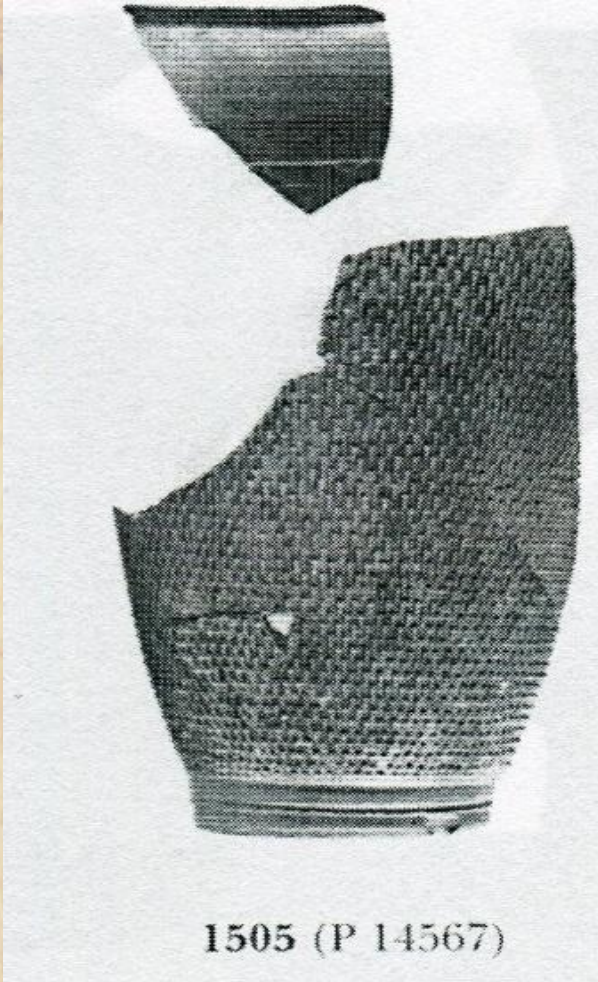
1503 (P 35028)



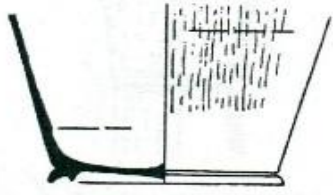
1504 (P 33819)

Aco Kırım

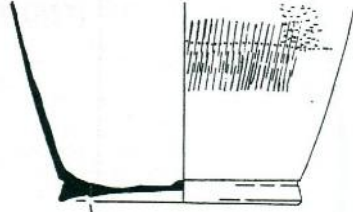
Kabın vücudunu kaplayan ince yapım “dikenler” Aco-bardak sınıfı tarafından takip edilmektedir. Bu yüzey İtalyanca La muette(Lyon) diye adlandırılan ayrıntılı olarak belgelenen sınıfa paralel bir ürün olarak görülmektedir. Doğu Akdeniz sitelerinde bilinen bir tiptir.



Bardak

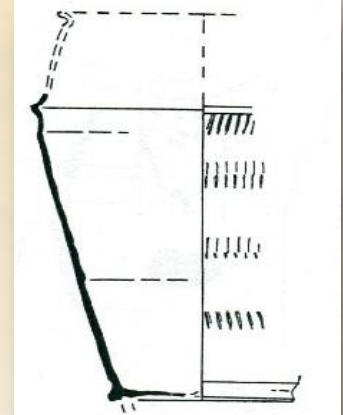


1507 (P 35036)

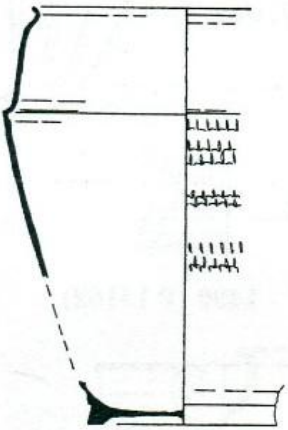


1512 (P 32188)

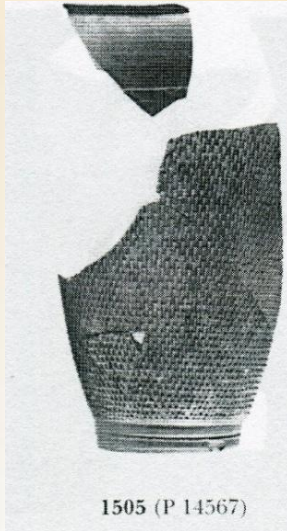
Benzer şekillerle ve yumurta kabuğu inceliğinde bardaklar, rulet bantları ile dekore edilen bu tür kapların çeşitli sürümlerini Khorint'te (özellikle Agora'da yaygın) M.S.1-50 arasında görmek mümkün.



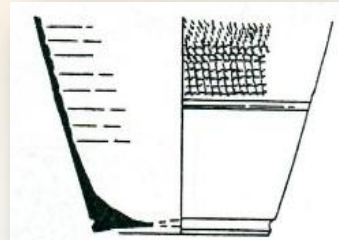
1509 (P 8934)



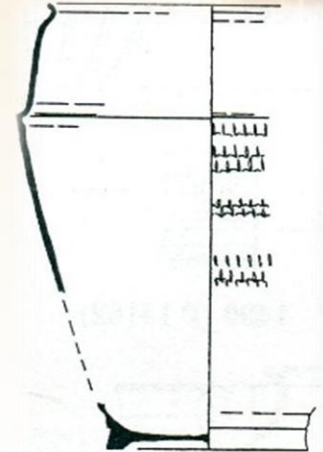
1508 (P 8936)



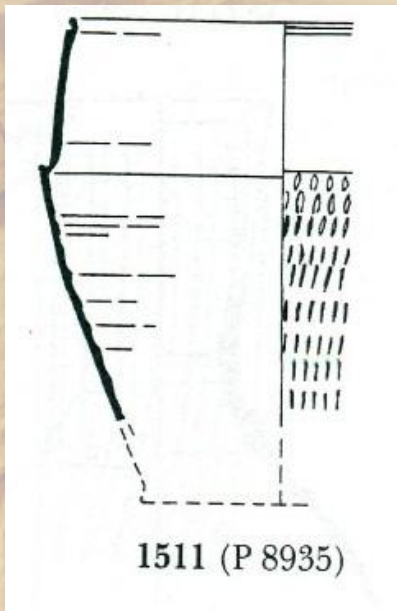
1505 (P 14567)



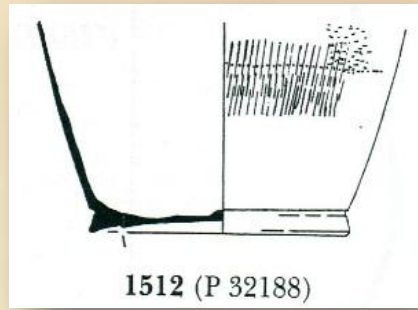
1510 (P 19197)



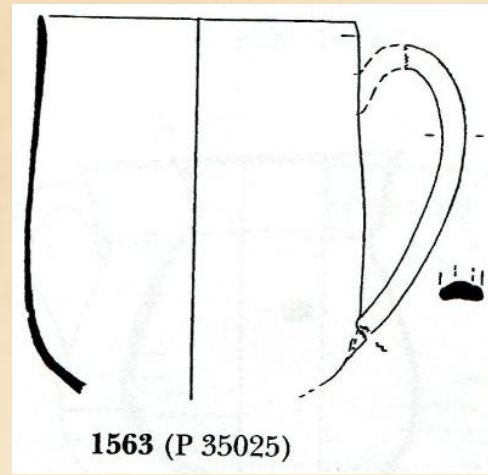
1508 (P 8936)



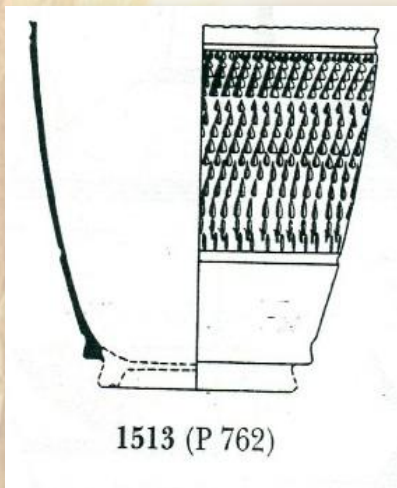
1511 (P 8935)



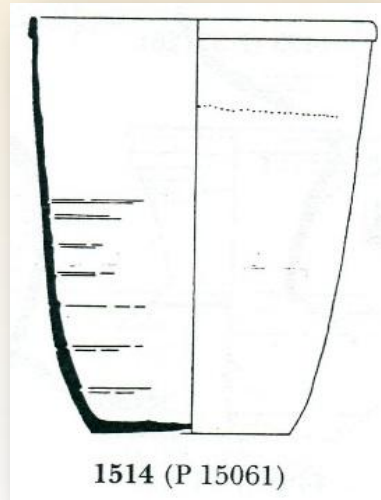
1512 (P 32188)



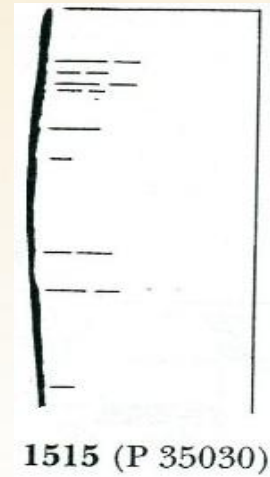
1563 (P 35025)



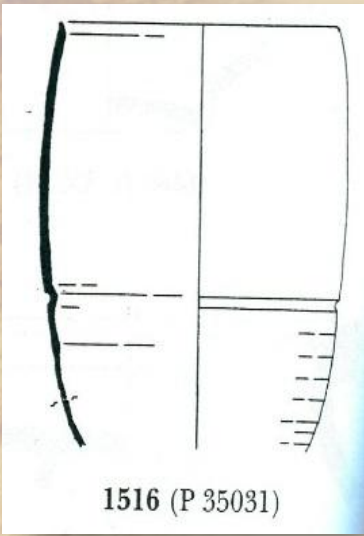
1513 (P 762)



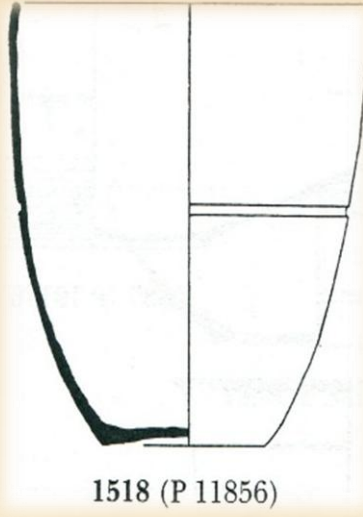
1514 (P 15061)



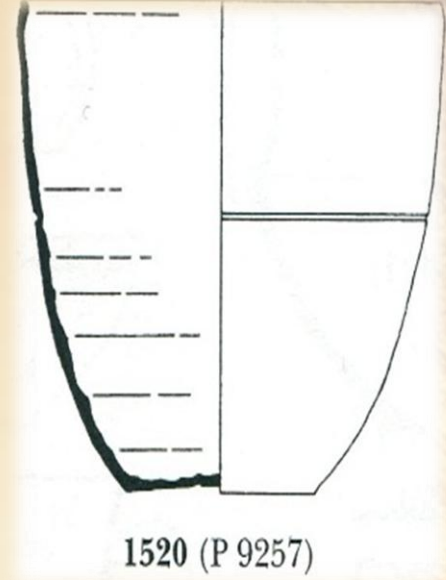
1515 (P 35030)



1516 (P 35031)

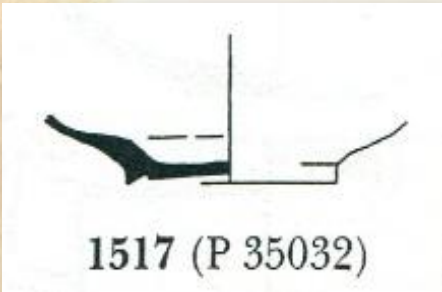


1518 (P 11856)

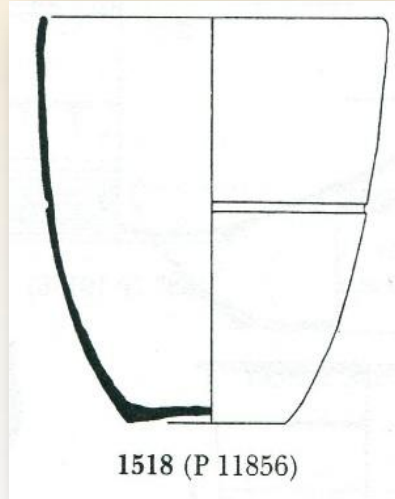


1520 (P 9257)

1514-1520 arası kapların ilk örneği, “Soldaten Becher” (askeri bardak) şeklinde adlandırılan Augustus tipidir. Daha az yaygın şekilleri ise bazı yerel Küçük Asya ürünleri ve ya İtalyan ürünleri olabilir.



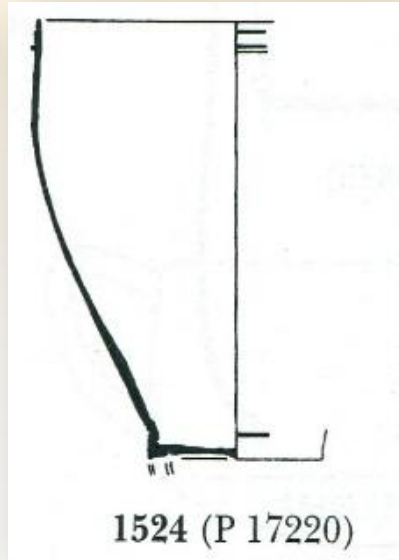
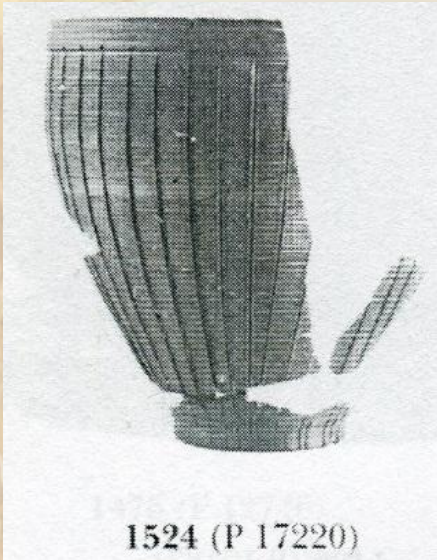
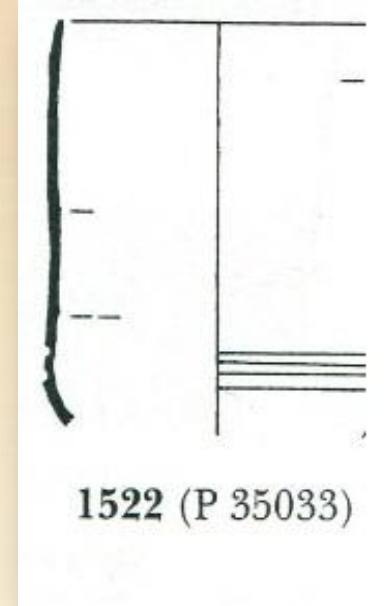
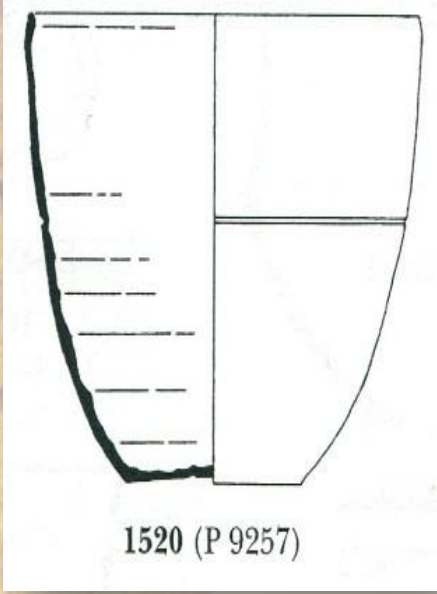
1517 (P 35032)



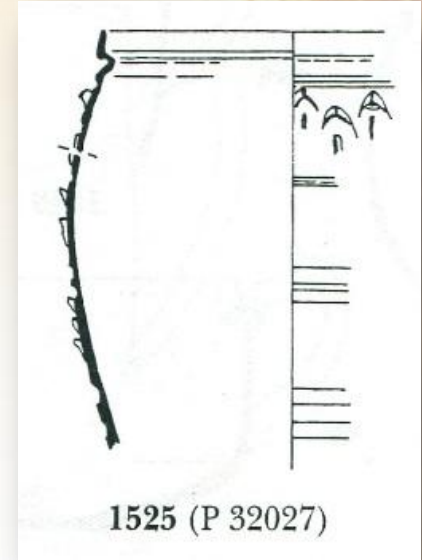
1518 (P 11856)

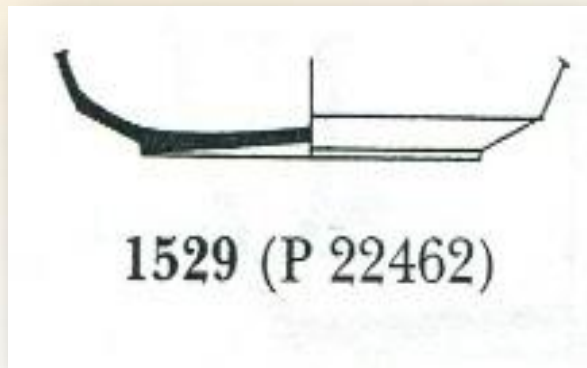
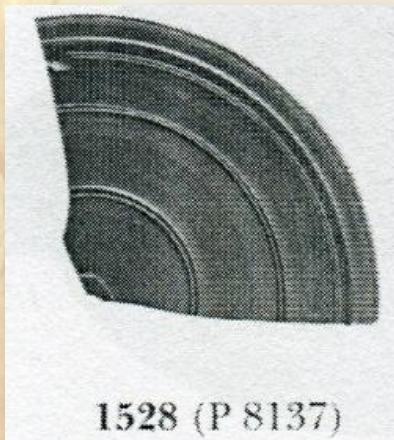
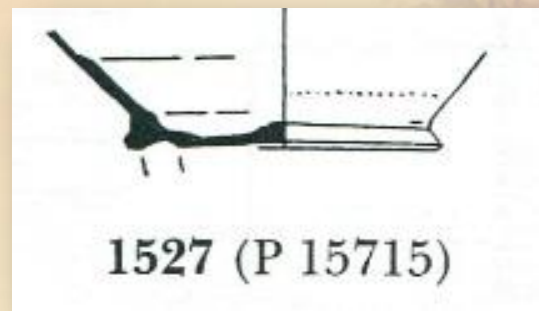
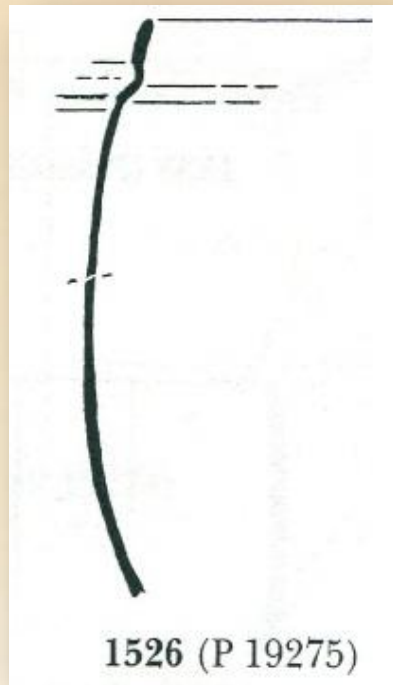
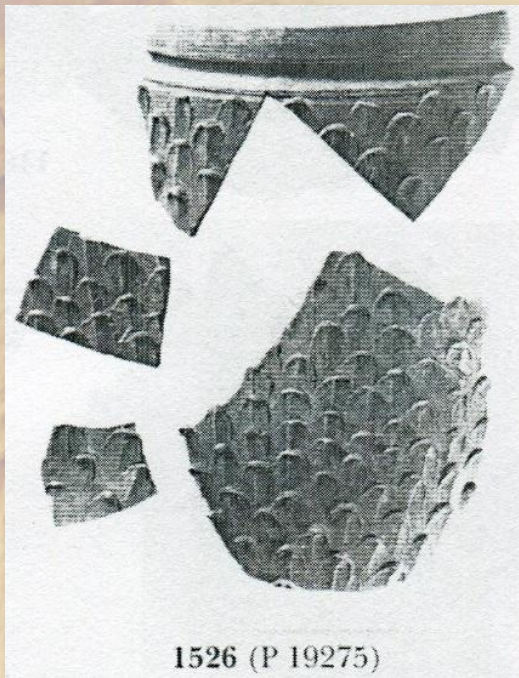


1519 (P 14101)



➤ Kuzey İtalya ve Slovenya'da oldukça yaygın olan kabuk-beher olarak adlandırılan kap, beher bağlamında Claudian tarihini göstermektedir.







1



2



3

Pompeipolis (Kastamonu), ince cidarlı bardak

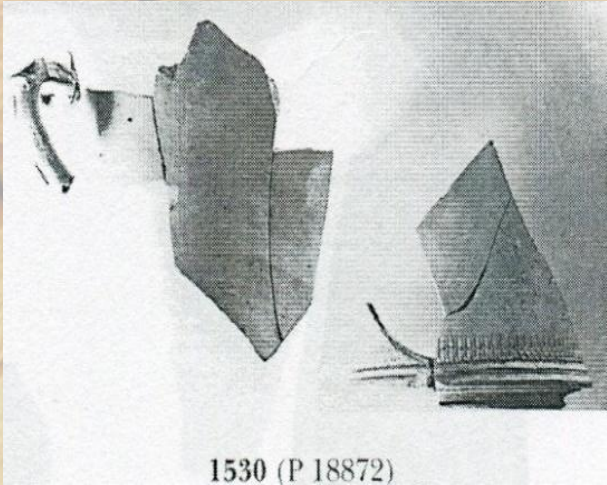


4

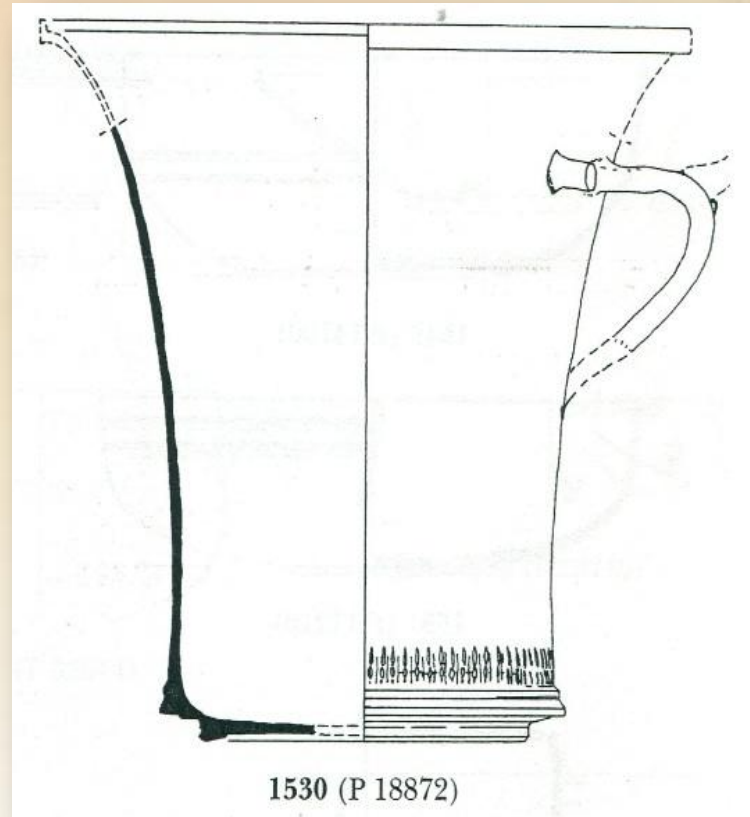


5

Modiolus

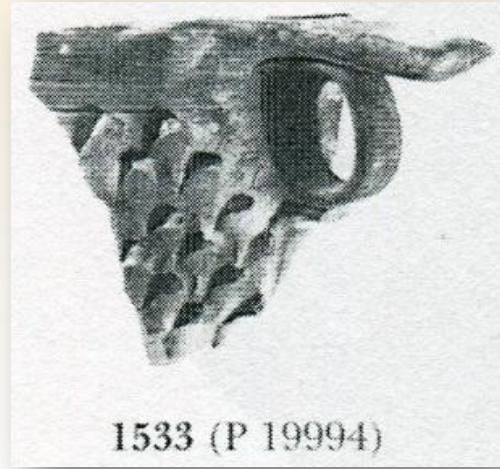
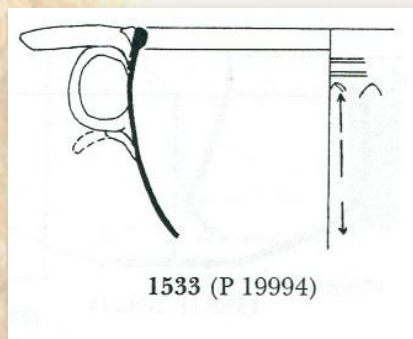
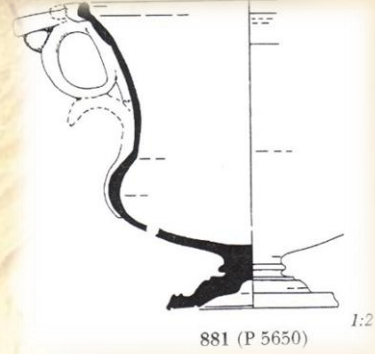
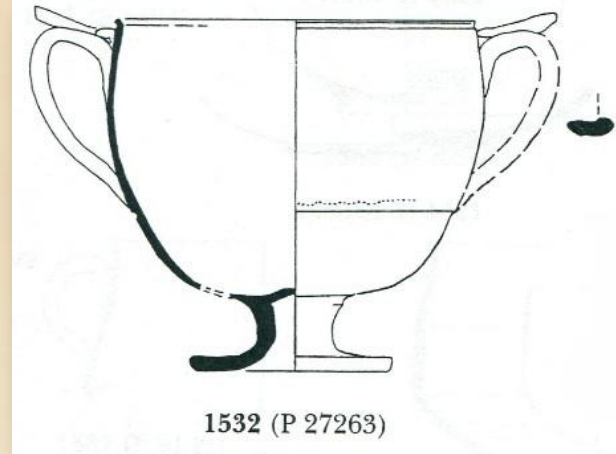
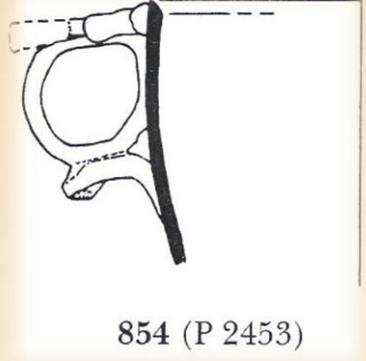
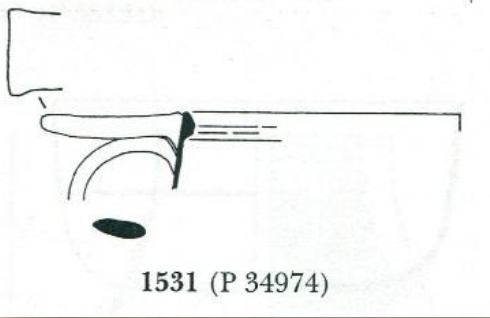


1530 (P 18872)

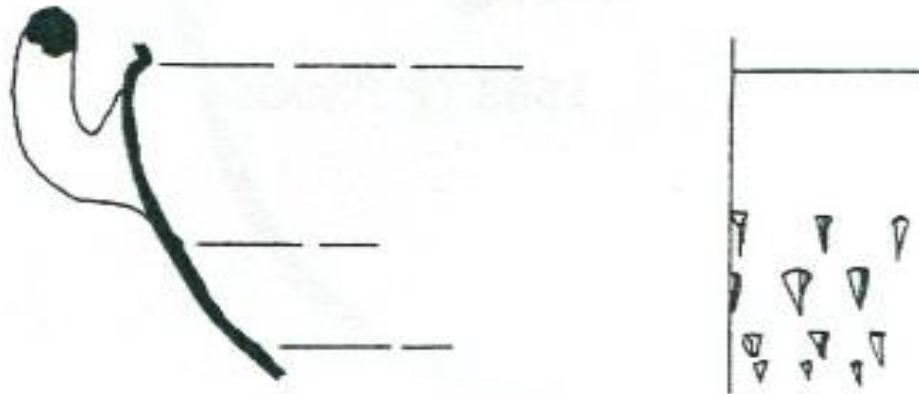


1530 (P 18872)

Kantharoslar

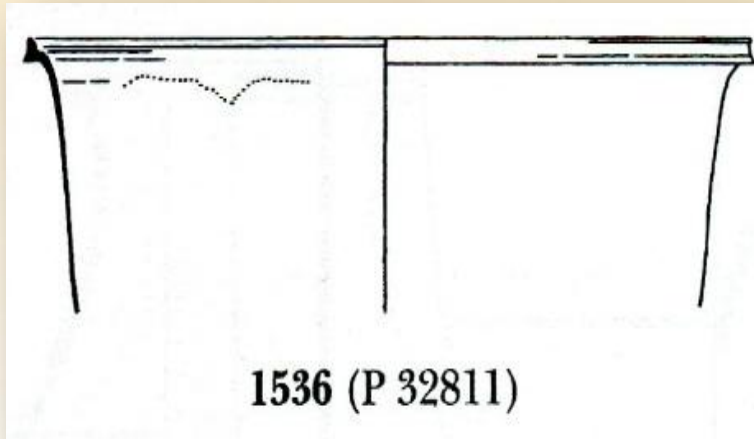


Derin Kulplu Kaplar (“Krater”)

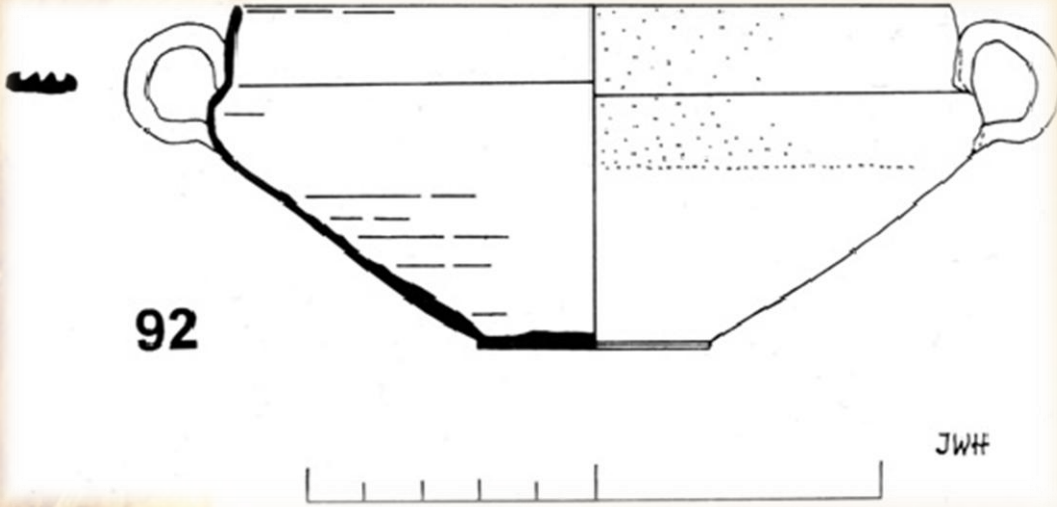
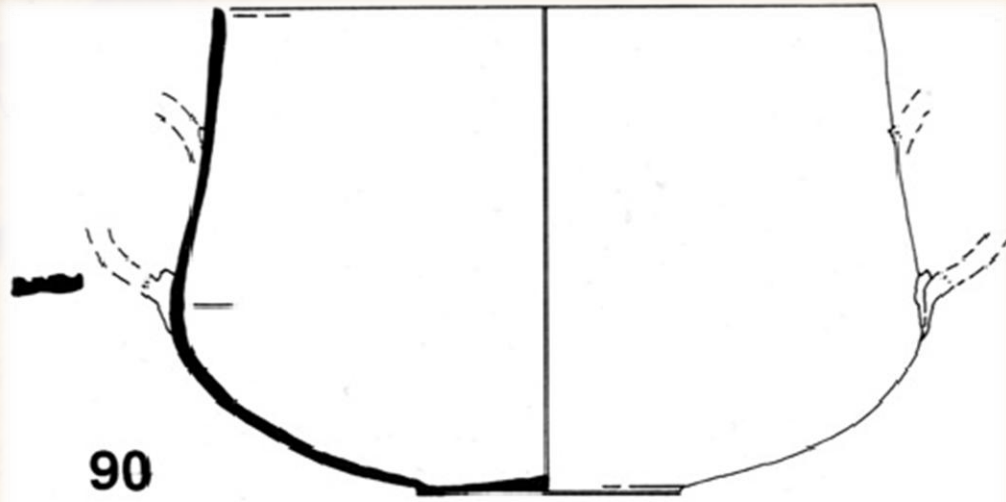


1535 (P 32180)

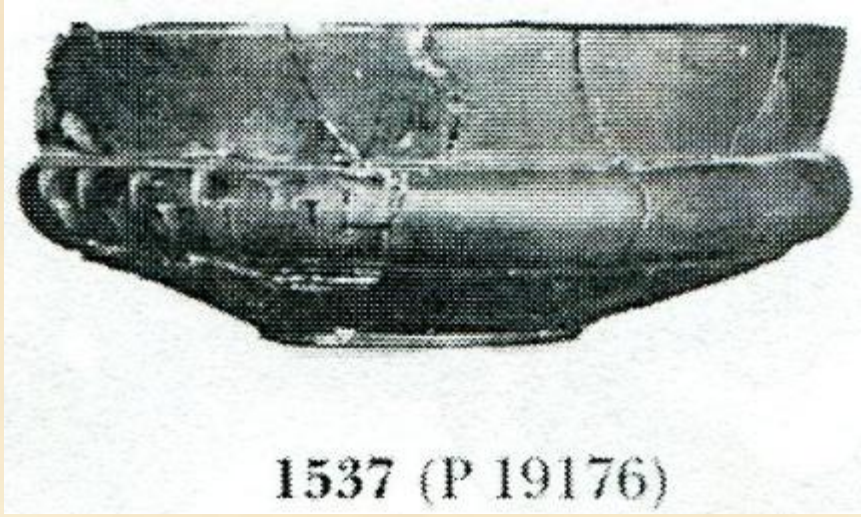
Kadeh (Siyah Astarlı Kaplar)



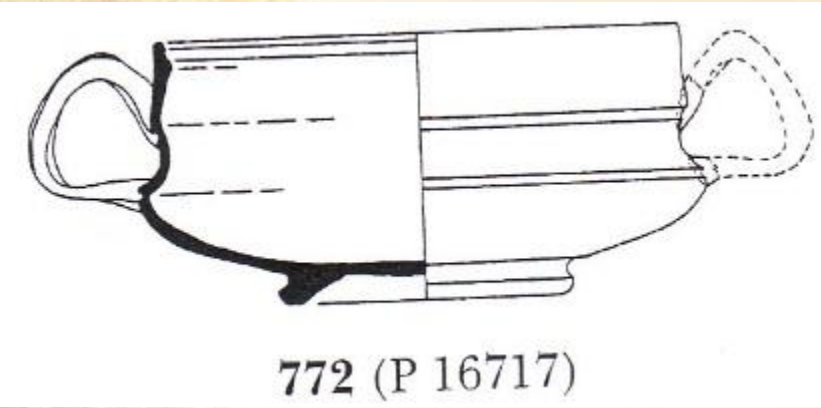
İki Kulplu Bardak



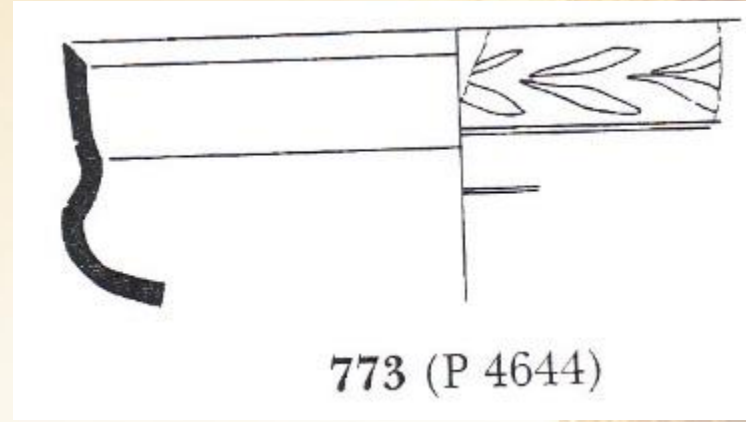
İki saplı sığ, su bardağı. Sarımsı, sade kahverengi, bir renk tonuna sahip. Halka şeklinde kulplar. Tyrrhenian sınıfı ile aynı kaynaktan olabileceğini söylemektedir Moevs.



1537 (P 19176)

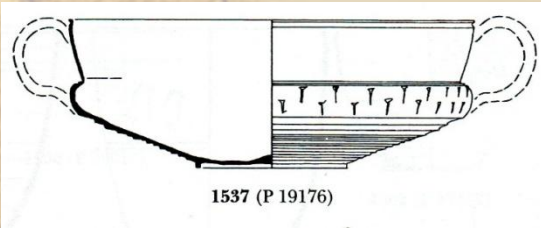


772 (P 16717)

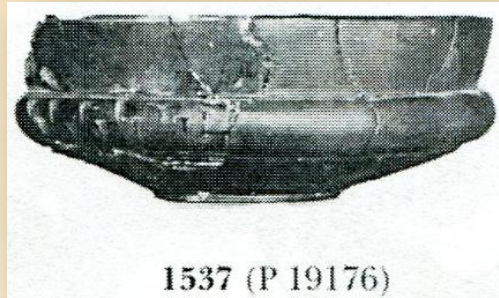


773 (P 4644)

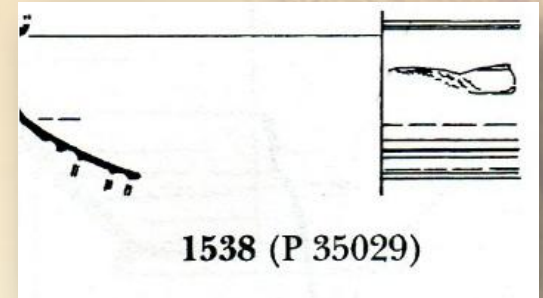
772-773 Çandarlı Kapları



1537 (P 19176)



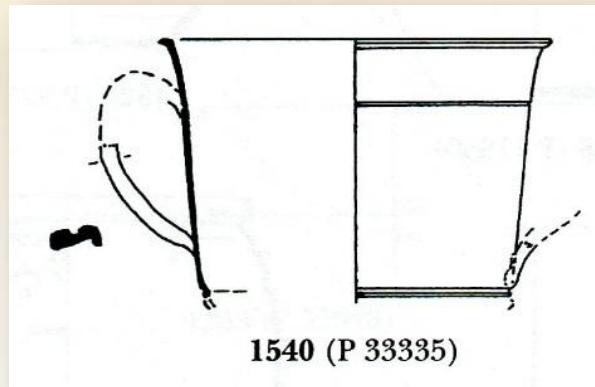
1537 (P 19176)



1538 (P 35029)



1539 (P 6819)



1540 (P 33335)



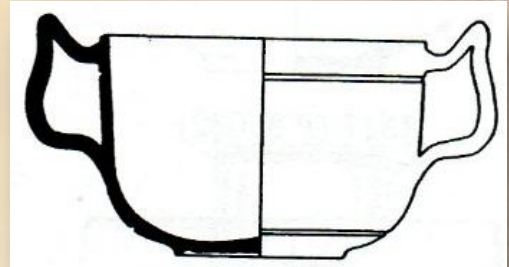
1541 (P 33088)



1542 (P 21733)

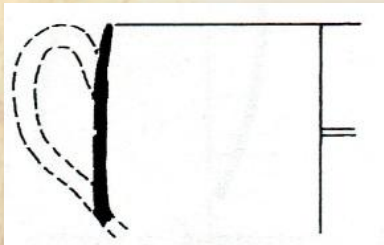


1543 (P 9150)

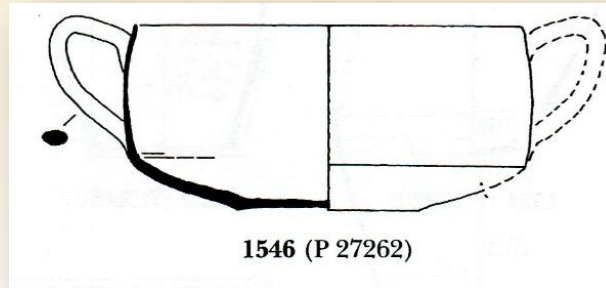


1544 (P 11654)

Benzer: P22674



1545 (P 27505)



1546 (P 27262)



1547 (P 20830)



90



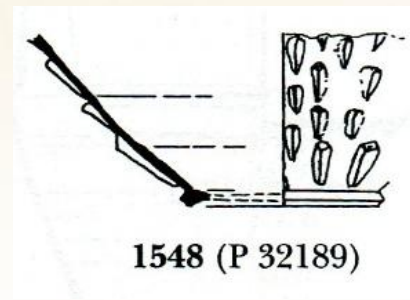
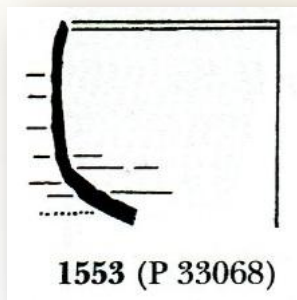
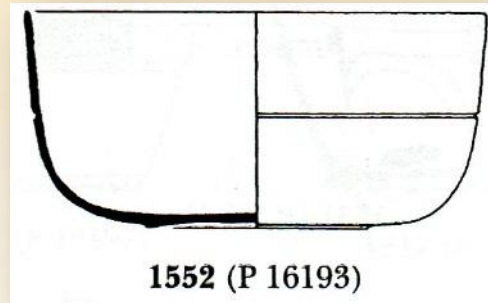
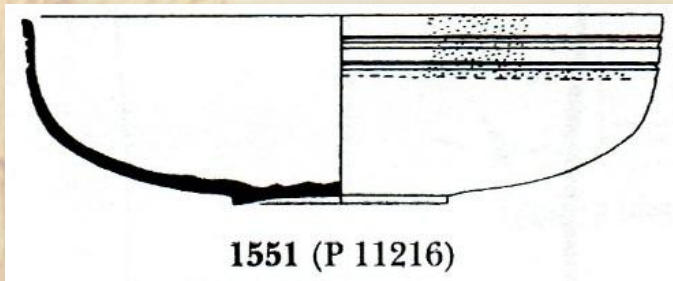
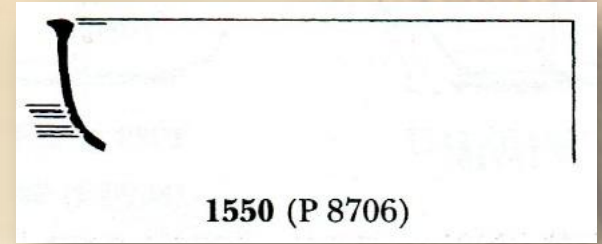
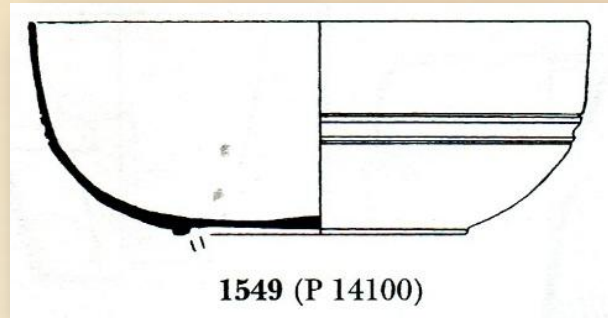
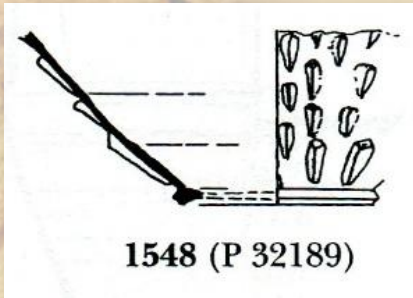
92

JWH



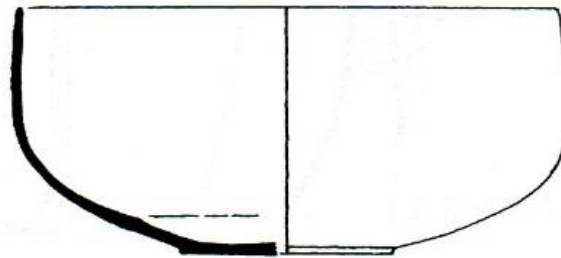
Fig. 8. Thin-walled wares: two-handled cups, cat. 90

Kâseler





1554 (P 33069)



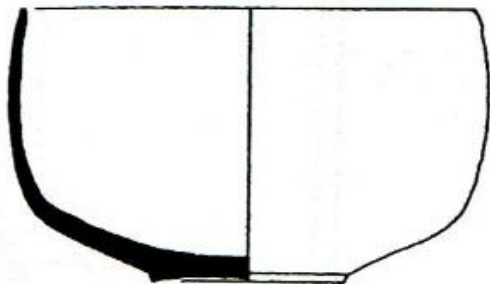
1555 (P 20831)



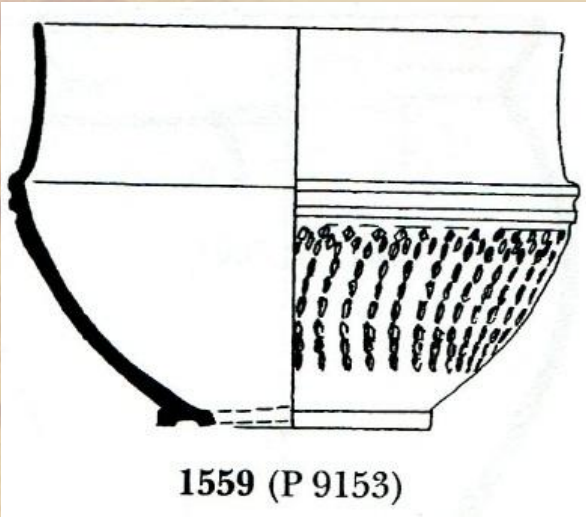
1556 (P 11520)



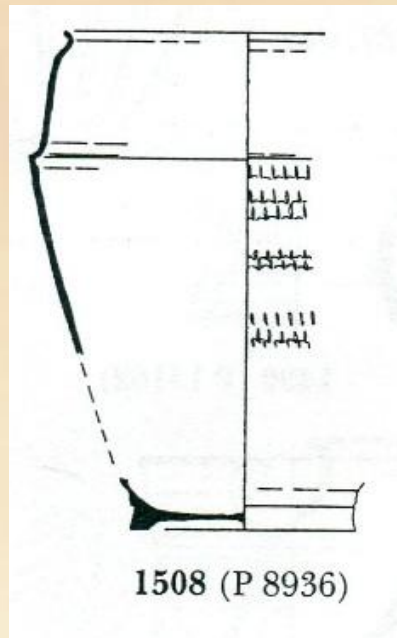
1558 (P 32205)



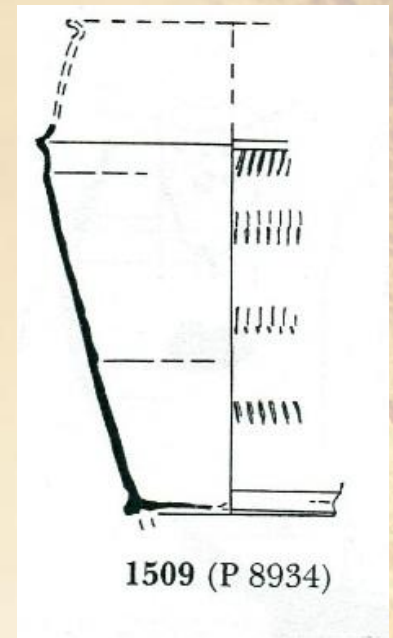
1557 (P 7961)



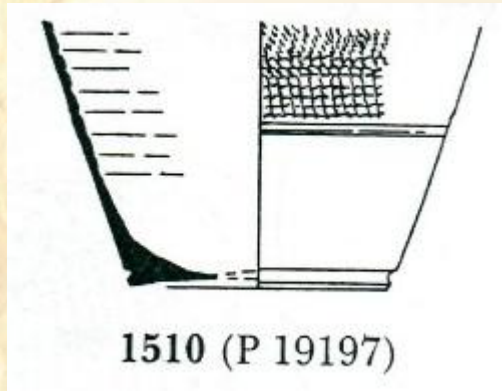
1559 (P 9153)



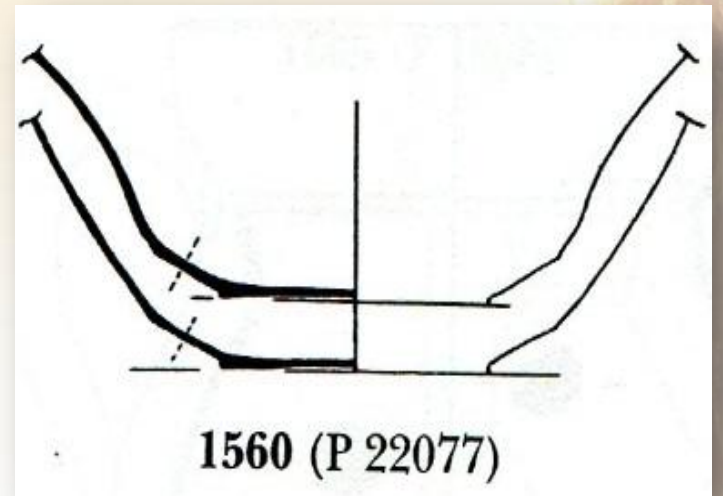
1508 (P 8936)



1509 (P 8934)

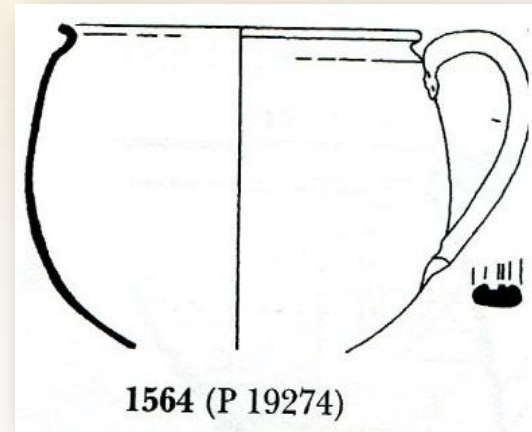
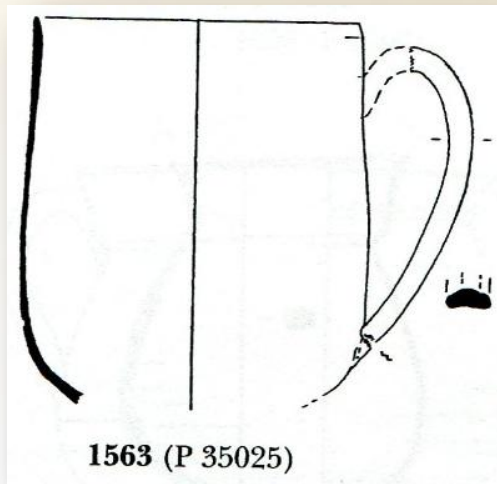
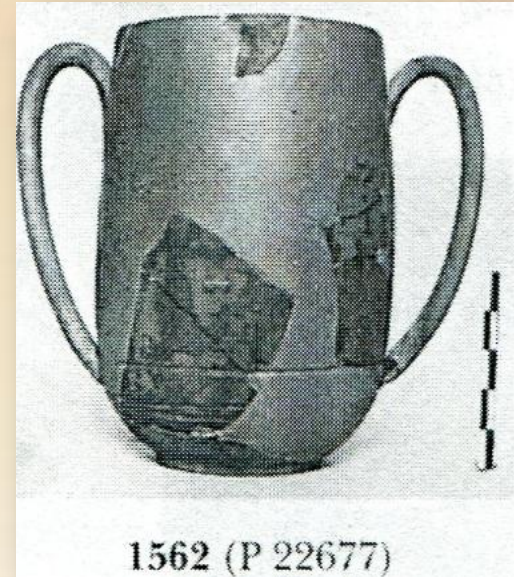
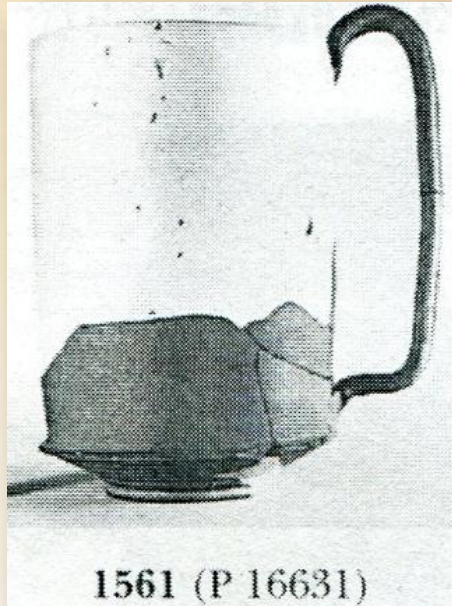


1510 (P 19197)

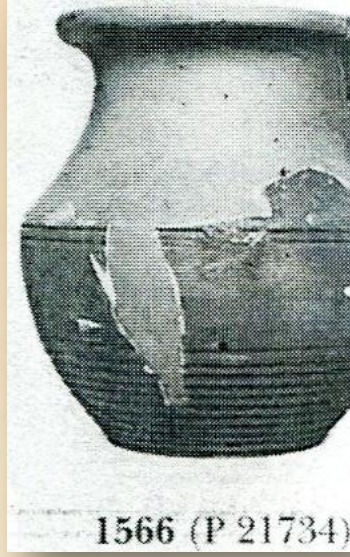


1560 (P 22077)

Kulp ve Bardak



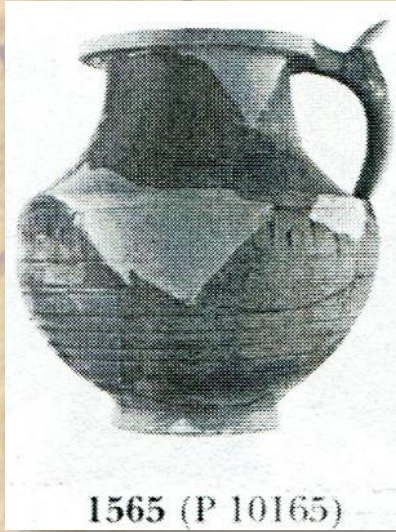
Sürahiler



1566 (P 21734)

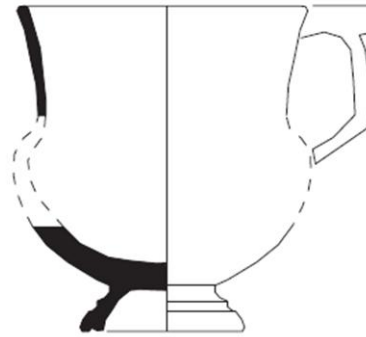


1567 (P 8974)



1565 (P 10165)

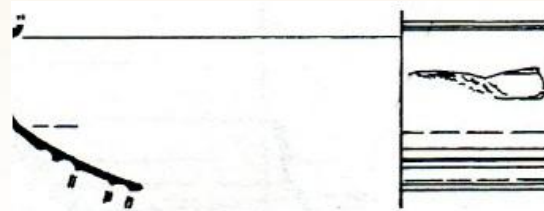
Benzer: P 23063



Knidos

Çizim 10

1/2



1538 (P 35029)



1568 (P 19072)



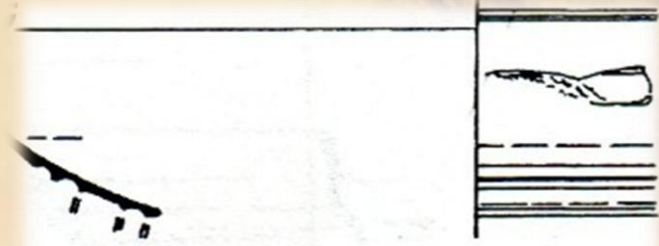
1569 (P 14929)



1565 (P 10165)



1543 (P 9150)



1538 (P 35029)



1542 (P 21733)

Geniş yaygın aralıklı barbotine dikenlerle bezeli sürahi, erken örneklerden 1538 numaralı bardak parçasını tekrarlar ve 1614 Knidos kapı baz alınmıştır. Diğer parçaları daha ince yapılı ve Kuzey Doğu Ege/Kuzey Küçük Asya 'yı (1542, 1543) içerebilir.



1570 (P 16718)

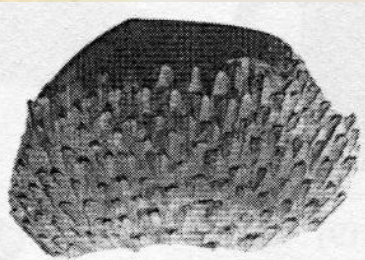


1571 (P 11218)



15

1572 (P 12986)

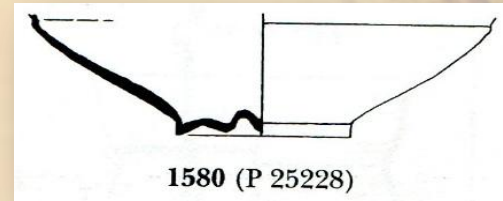


1573 (P 17413)

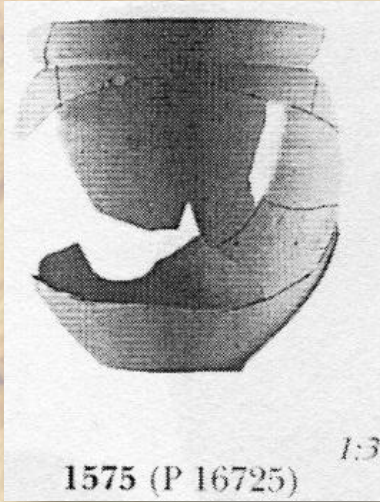


1574 (P 32168)

Çeşitli Kapalı Formlar

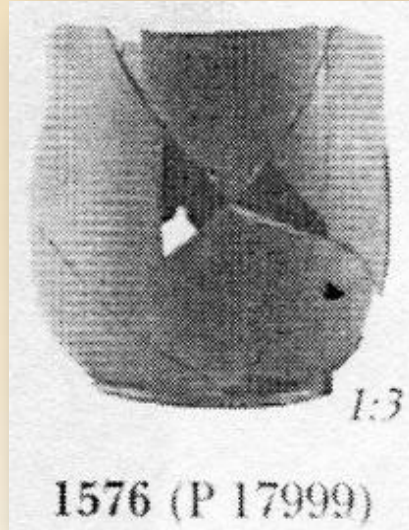


1580 (P 25228)



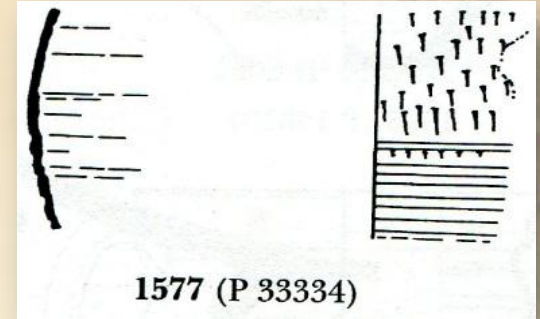
1575 (P 16725)

1:3



1576 (P 17999)

1:3

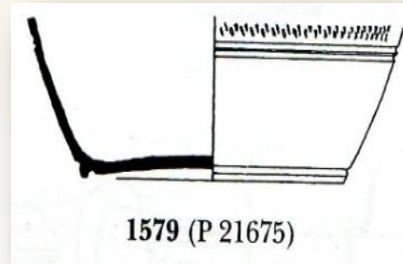


1577 (P 33334)

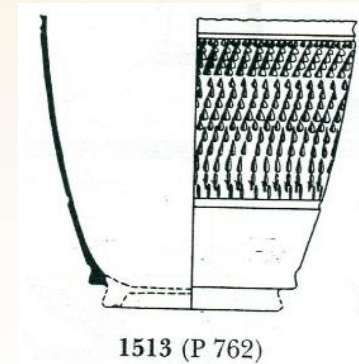


1578 (P 12037)

1:3

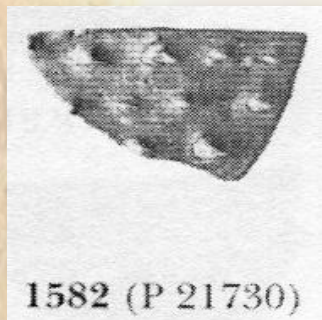
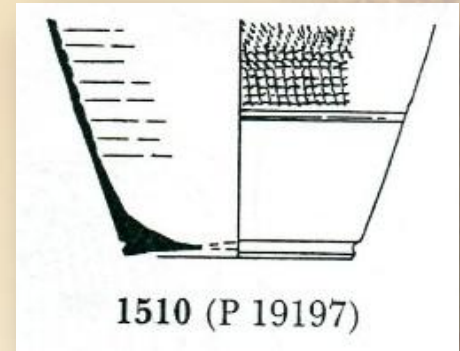
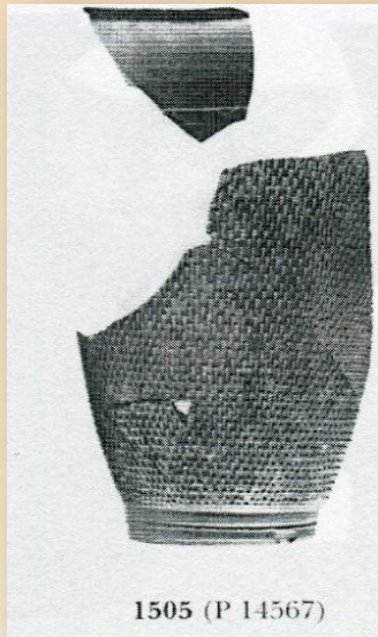
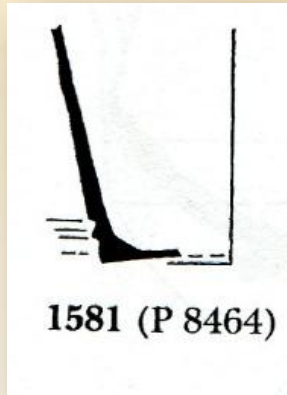
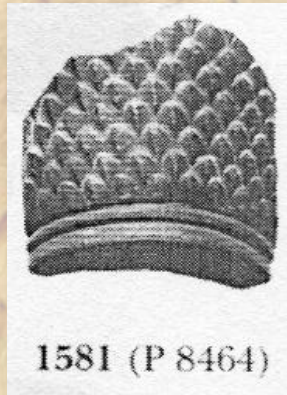


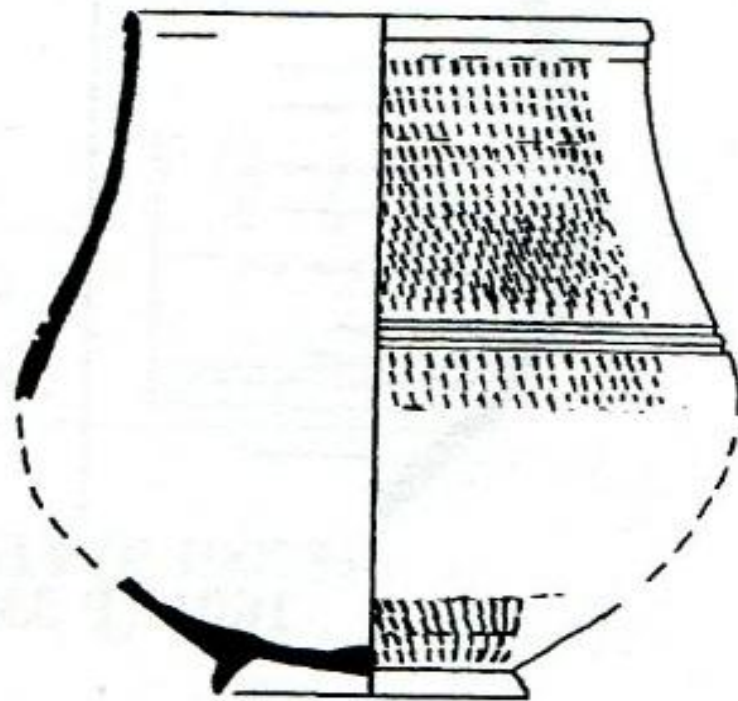
1579 (P 21675)



1513 (P 762)

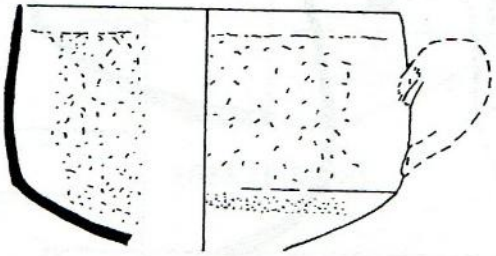
Bardak





1584 (P 9154)

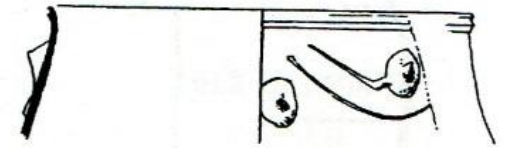
Omurgalı Bardaklar



1585 (P 32014)



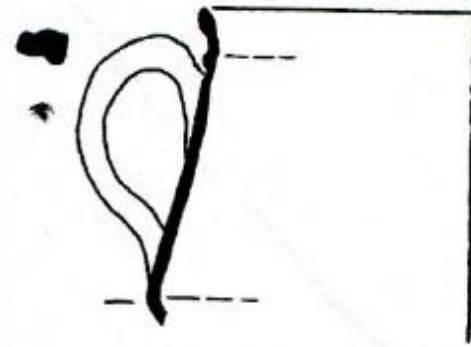
1586 (P 25746)



1586 (P 25746)



1587 (P 9149)



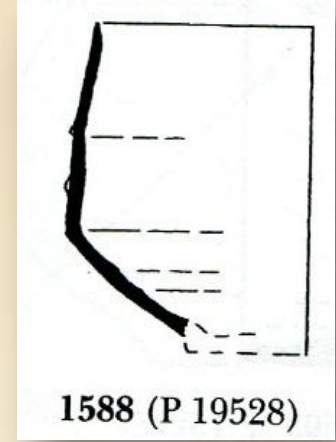
1587 (P 9149)

Benzer: P 14349

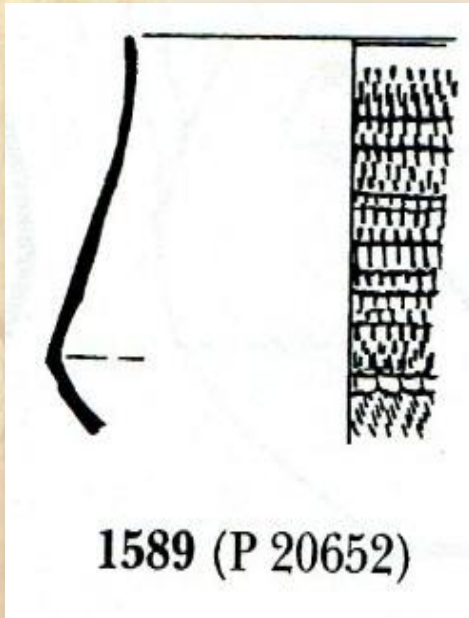
Omurgalı Çanaklar



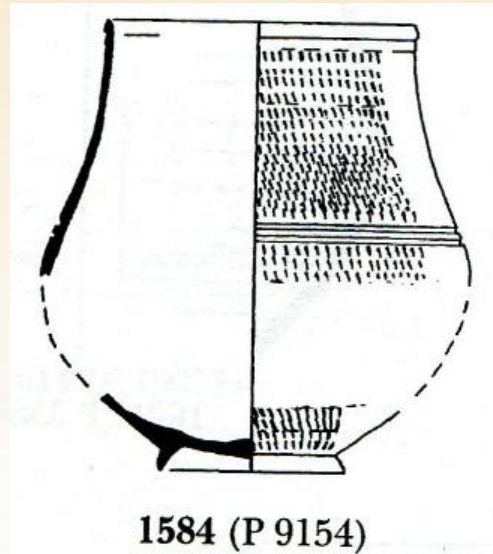
1588 (P 19528)



1588 (P 19528)

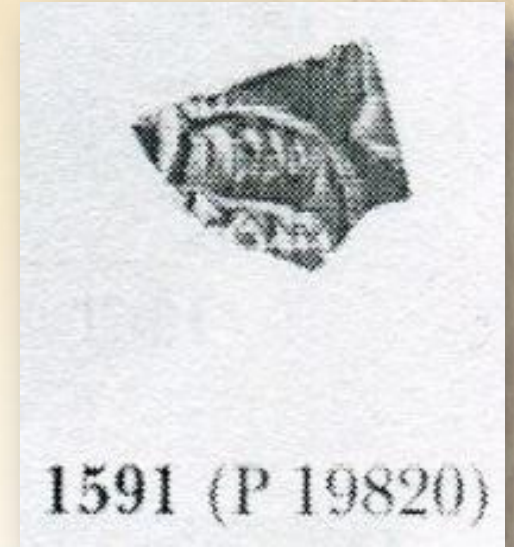
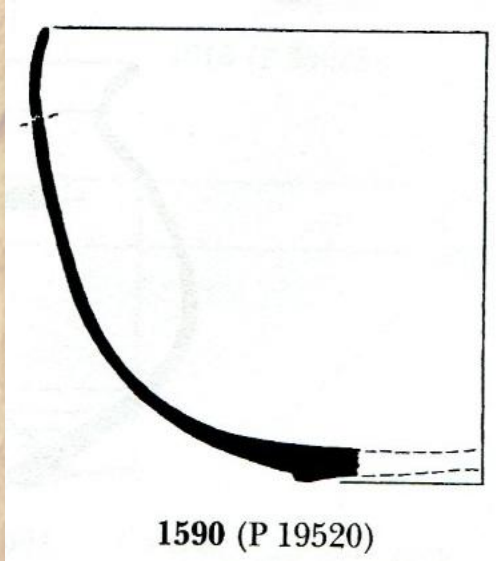


1589 (P 20652)



1584 (P 9154)

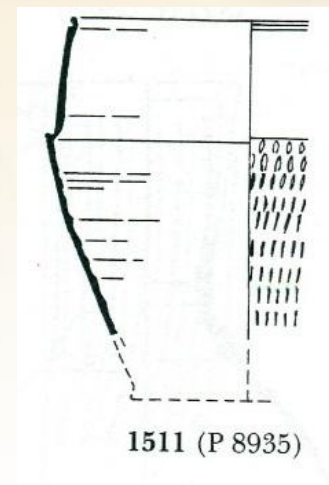
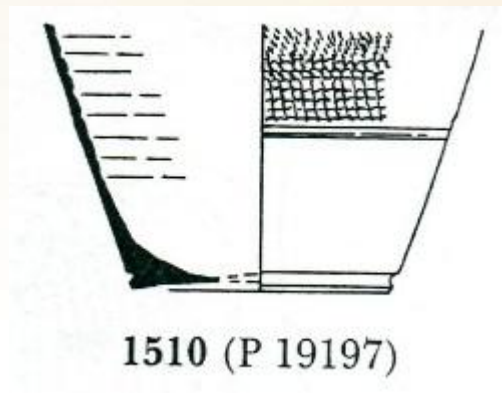
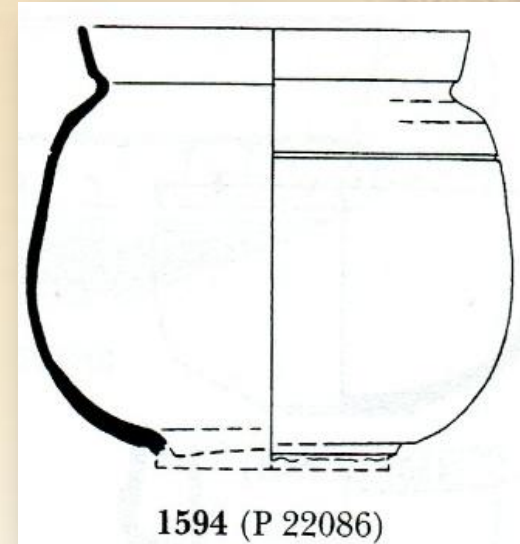
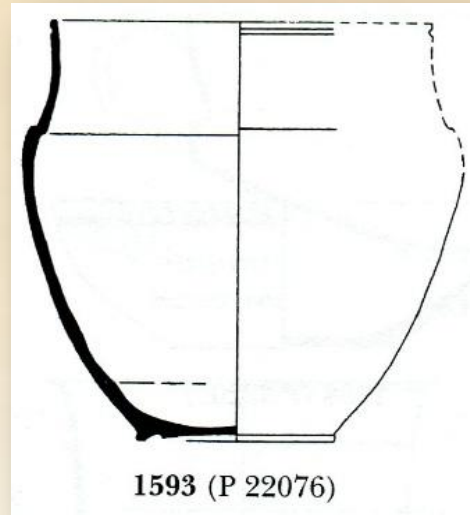
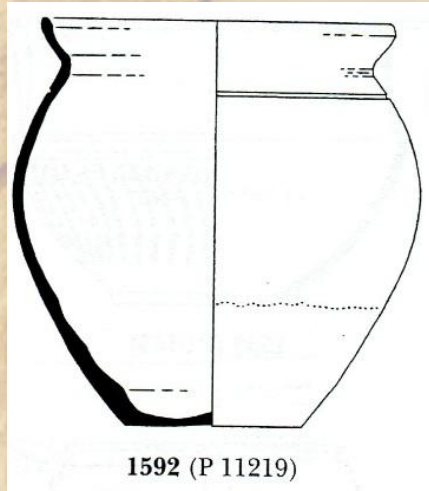
Diğer Kâseler



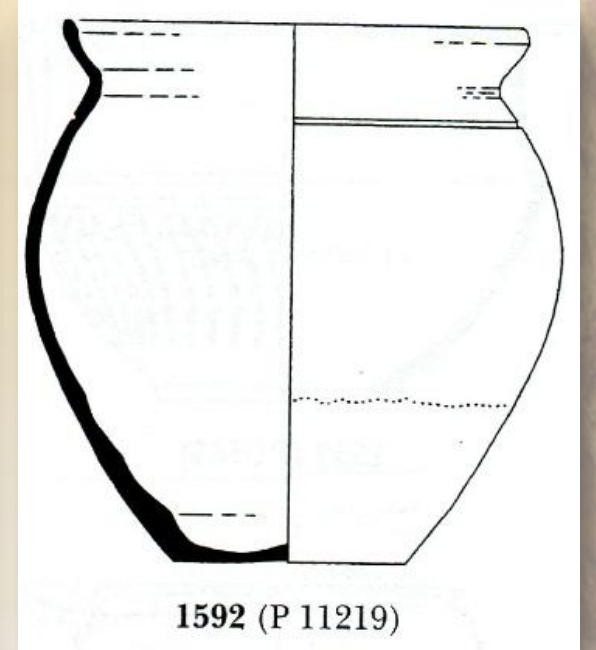
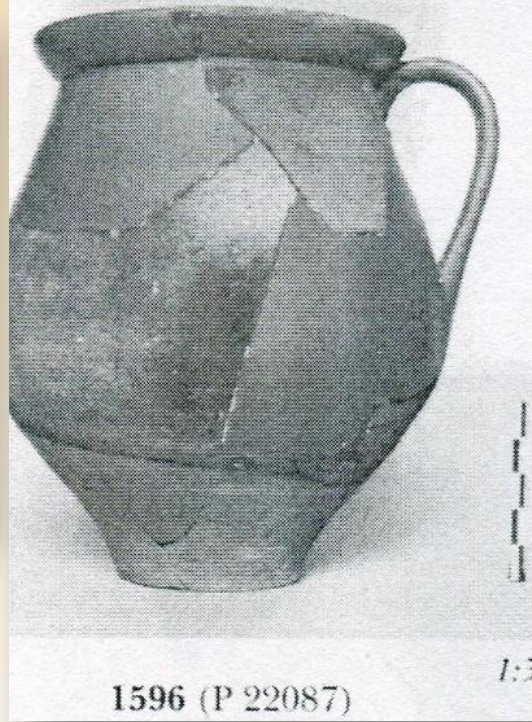
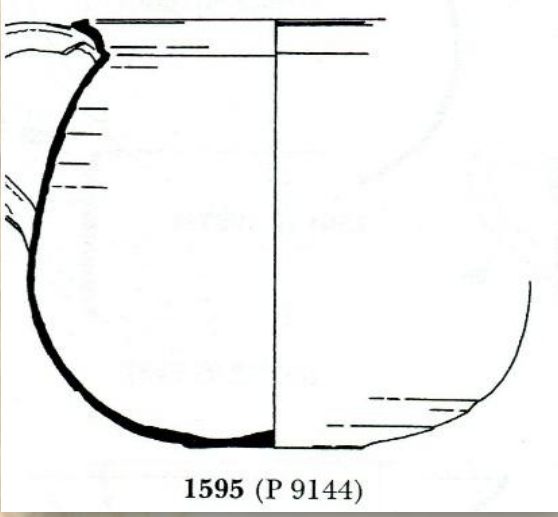
Benzer: P 13519

Kupalar (Boccalini Collarino)

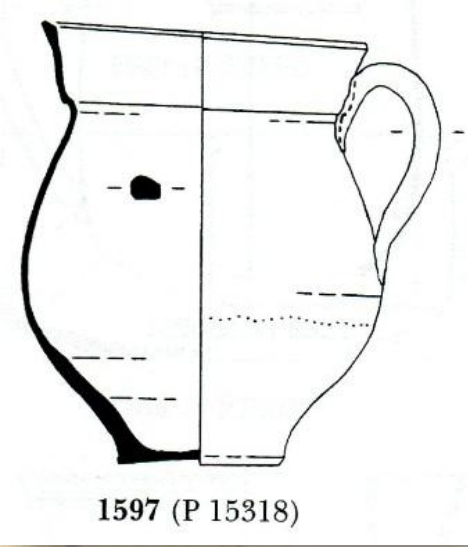
Bardak



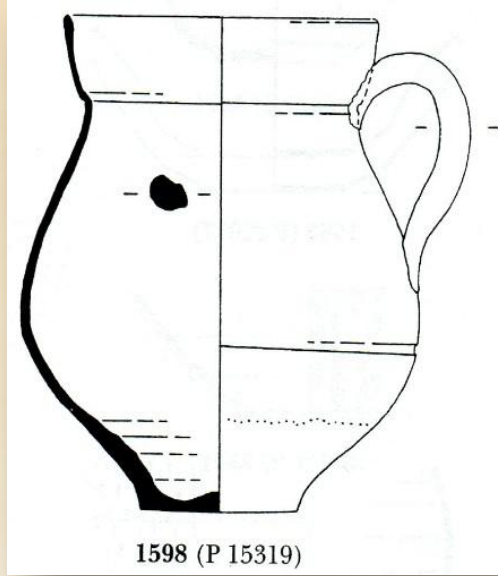
Kupalar ve Çeşitli Erken Türleri



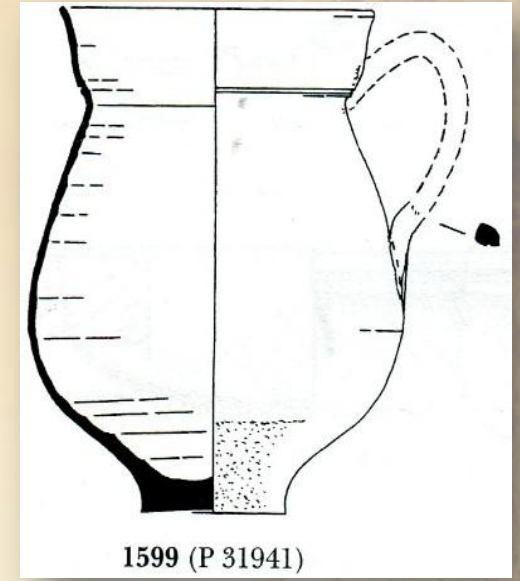
Çan şeklinde, şişkin ağızlı Phocea (Foça) Kupaları



1597 (P 15318)



1598 (P 15319)

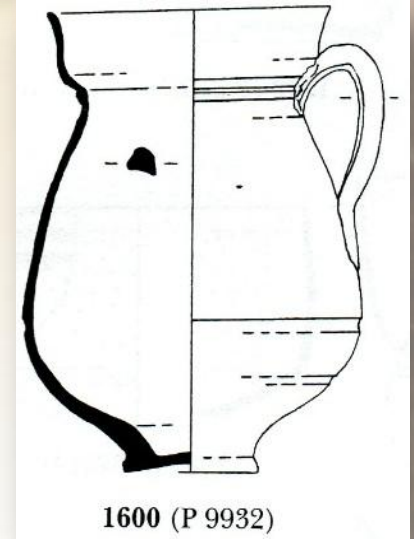


1599 (P 31941)

Benzer: P 14510
P 27509, P 11947
P9824, P18312

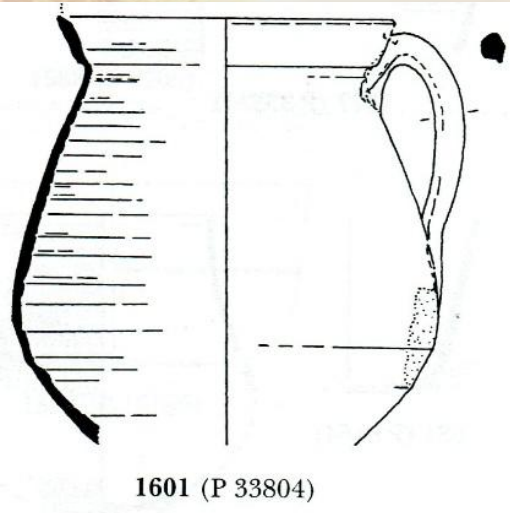
Benzer: P 15320, P 17581

Oldukça yüksek, biraz çan ağızlı, dilimli kolları ince kulplu kupalar oluşur. Sarımsı kahverengi, turuncu renk tonuna sahiptir. Atina agorasında, Phokaida bu tür kaplara rastlanmıştır. Phokaia'nın ana üretim merkezi olduğu düşünülmektedir. Batı ve Güney İtalya'da örnekleri azdır. Girit'te de benzer kupalar görülmektedir(genelde kırmızı). Bu kupa türü Geç Flavianus döneminde başlamıştır. Son örnekleri ise ufak ve oldukça ince olma eğilimindedir.



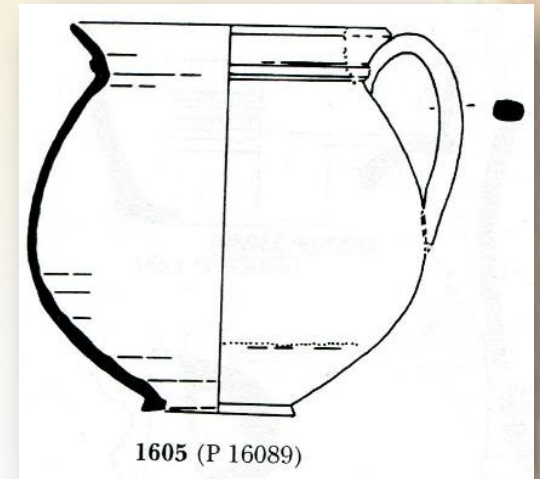
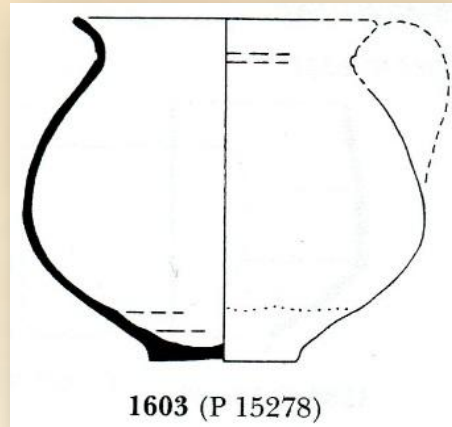
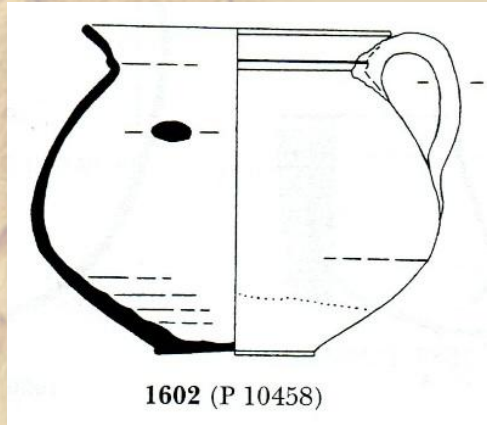
1600 (P 9932)

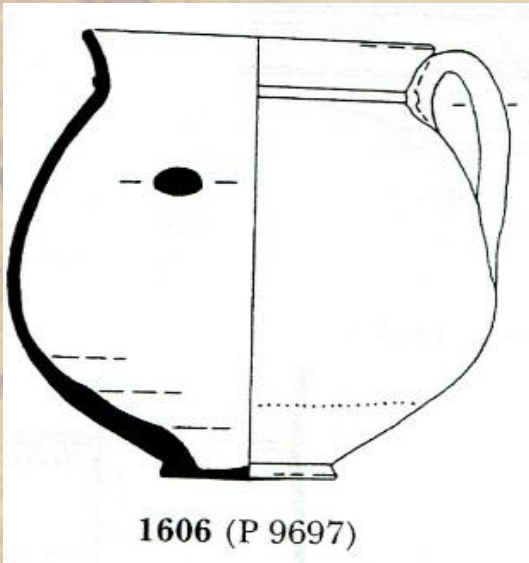
Benzer: P9510, P8325,
P9408, P2538, P17875,
P7923, P20009



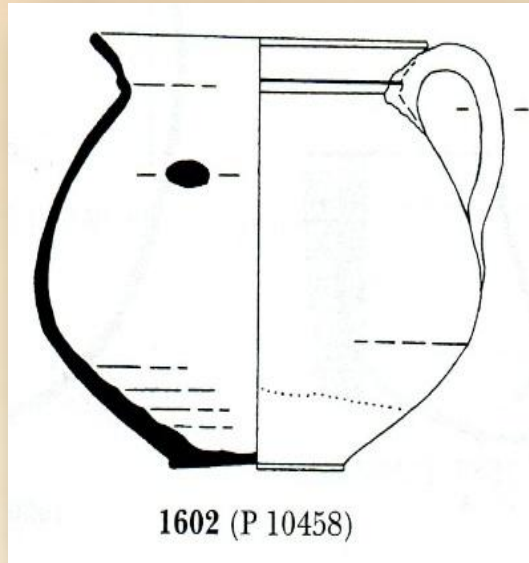
1601 (P 33804)

Collarino Tipi Trakya(Trachia) Kupaları

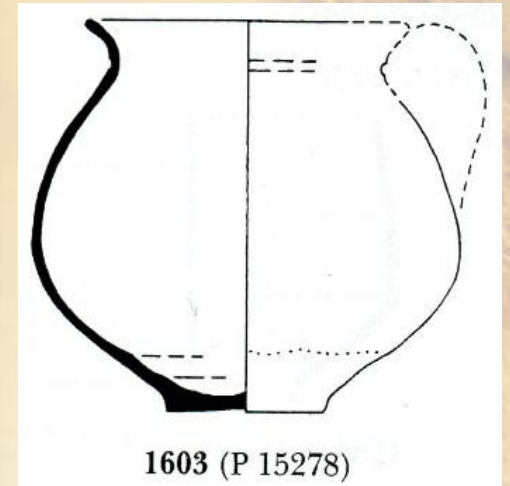




1606 (P 9697)

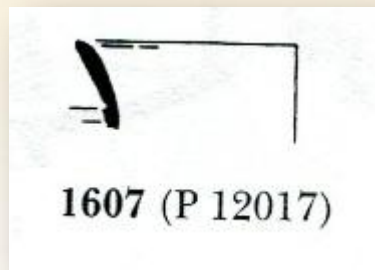


1602 (P 10458)



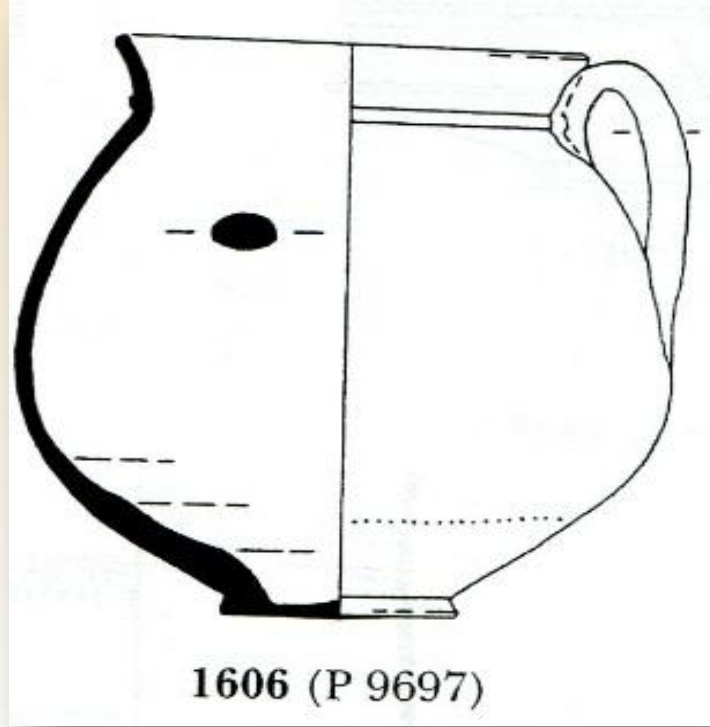
1603 (P 15278)

Benzer: P 9694, P 15673,
P 3727



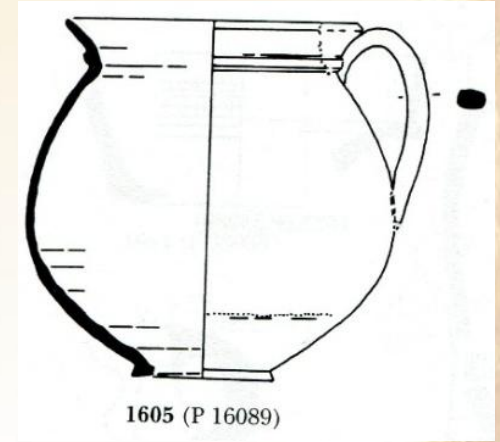
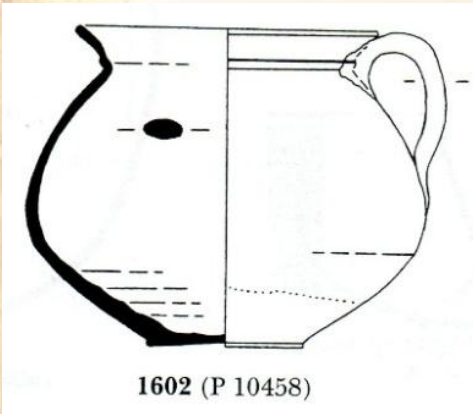
1607 (P 12017)

1608: Yuvarlak bir görünüme sahip, 1606 ile benzer ama çok geniş değildir. Sapı yuvarlak, hafif dışa doğru eğri ve düşük ağızlıdır. Kabın karın bölgesinde beyaz boya ile "ZHC(...) (Πίε (1) ζήαις) yazmaktadır. **Benzer kaplar: P 15673, P 3727.** M.S. 3.yy'da.

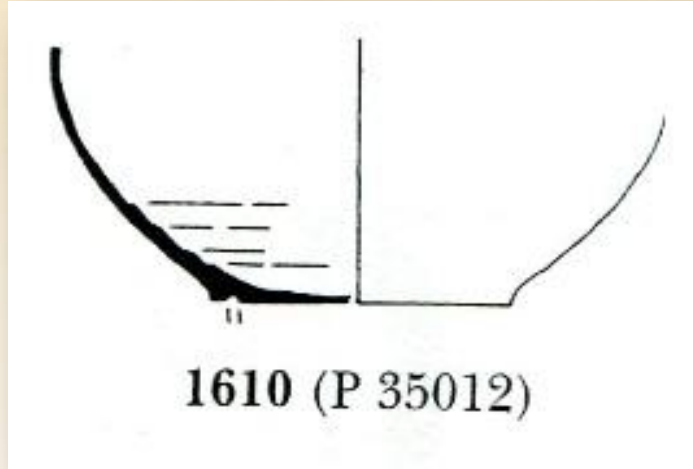


Değişik Biçimlerde Phokeia(Foça) Kupaları

1609: 1602-1608 ile benzer geniş karınlı bir görünüme sahiptir. Dudak kısmı basık, boyun ve yaka kısmında yatay yivler bulunmaktadır (bkz. 1597-1599). 1597-1599 kapları gibi kil rengi hafif turuncu-kahverengidir. Dış yüzeyinde fırınlanmaya bağlı olarak gümüş gri renkler görülmektedir. M.S. 2.-3. yy'a tarihlenmektedir. Tarih olarak bu yüzyılın **benzer ürünleri: P 11078, 11080** ve Broneer tipi XXVII Korinth veya Attika lambası.



Diğer İnce Cidarlı Kaplar





Özlem ARLI



0811311001