

**DOCKET NO.: SA-517
EXHIBIT NO. 2N**

**NATIONAL TRANSPORTATION SAFETY BOARD
WASHINGTON, D.C.**

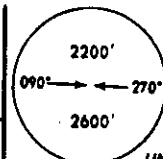
**COPY OF AUGUST 2, 1996
ILS 6L APPROACH PLATE**

(1 page)

ATIS 119.0
 GUAM Approach (R) 119.8
 AGANA Tower 118.1
 Ground 121.9

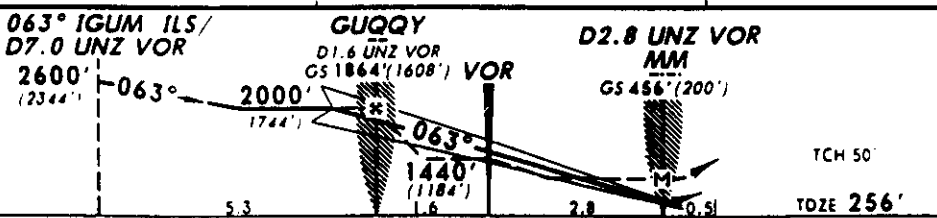
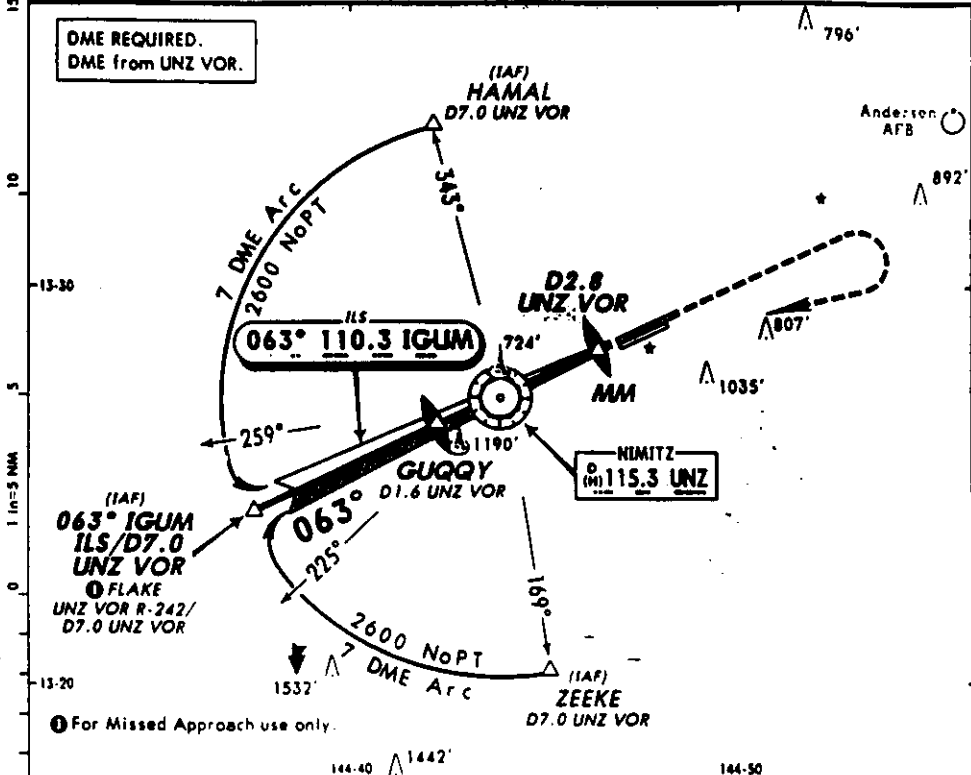
GUAM INTL
 ILS Rwy 6L
 LOC 110.3 IGUM

Alt Set: INCHES Trans level: FL 180
 Trans alt: 18000' (17744')



MSA
 UNZ VOR

Apt. Elev 297'



MISSED APPROACH: Climb to 2600, then turn RIGHT via UNZ VOR R-242 to FLAKE D7.0 UNZ VOR and hold SOUTHWEST, RIGHT turn, 062° inbound.

STRAIGHT-IN LANDING RWY 6L					CIRCLE-TO-LAND	
ILS		LOC (GS out)			Not Authorized Southeast of Rwy 6R-24L	
DAIM, 456' (200')		MDAIM, 560' (304')				
	FULL	RAIL or ALS out	RAIL out	ALS out	Max Kts	MDAIM:
A			1/2		90	720' (423' - 1)
B			3/4	1	120	760' (463' - 1)
C	1/2	3/4			140	760' (463' - 1 1/2)
D			3/4	1	165	860' (563' - 2)

Gnd speed-Kts	70	90	100	120	140	160
GS	3.00*	3.77	4.84	5.38	6.46	7.53
MAP at D2.8 UNZ VOR or FAF to MAP	4.4	3:46	2:56	2:38	2:12	1:53

CONTINENTAL GUAM OPERATIONS 131.9
 CHANGES Location name, procedure. © JEPPESEN SANDERSON, INC., 1986, 1996. ALL RIGHTS RESERVED

6L APP PLATE 2 AUG. 96
 1/21