

**DOCKET NO.: SA-517  
EXHIBIT NO. 2M**

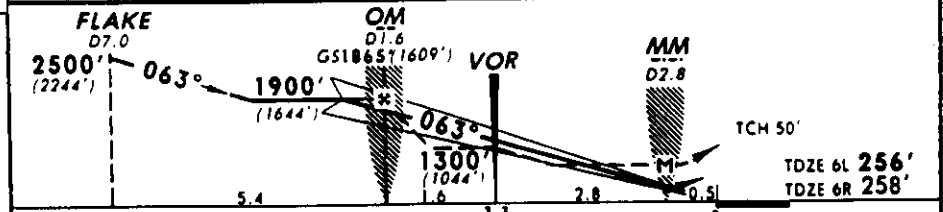
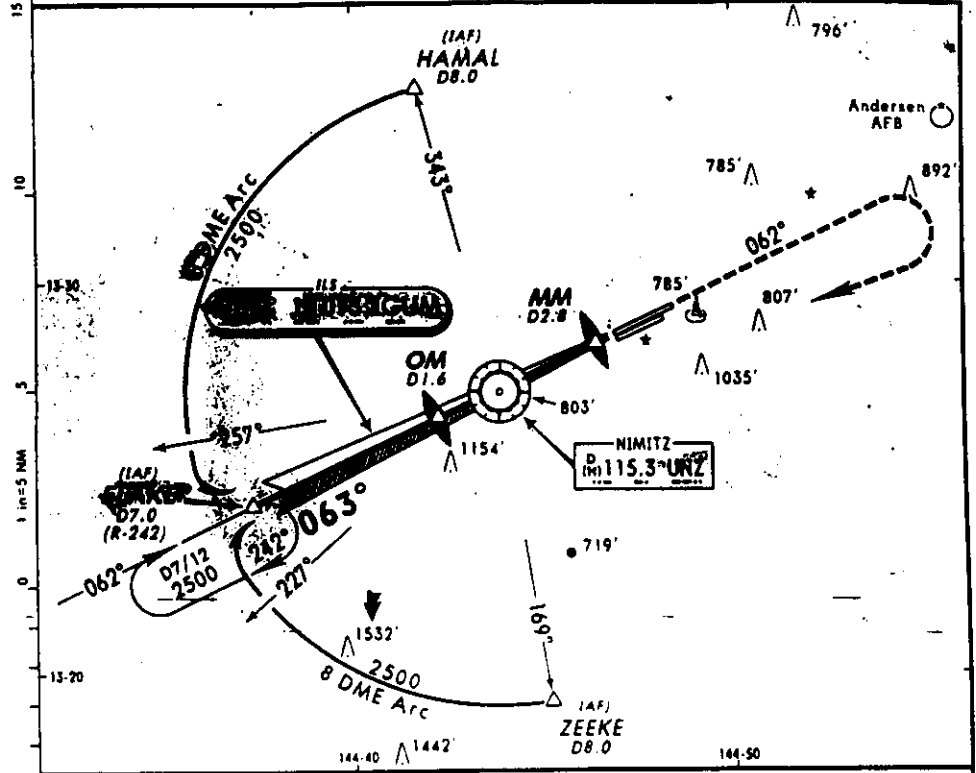
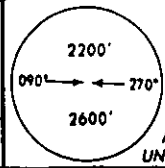
**NATIONAL TRANSPORTATION SAFETY BOARD  
WASHINGTON, D.C.**

**COPIES OF APPROACH PLATES FROM ACCIDENT  
AIRPLANE**

**(5 pages)**

**GUAM**  
**GUAM INTL**  
**ILS Rwy 6L**  
**LOC 110.3 IGUM**  
**Apt. Elev 297'**

ATIS 119.0  
 GUAM Approach (R) 119.8  
 AGANA Tower 118.1  
 Ground 121.9  
 Alt Set: INCHES  
 Trans level: FL 180  
 Trans alt: 18000' (17744')



**MISSED APPROACH:** Climb to 2500' outbound on UNZ VOR R-062, turn RIGHT, direct FLAKE D7.0.

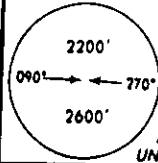
	STRAIGHT-IN LANDING RWY 6L				SIDESTEP LANDING RWY 6R	CIRCLE-TO-LAND Not Authorized Southeast of Rwy 6R-24L
	ILS		LOC (GS out)			
	DA(M) 456' (200')		MDA(M) 560' (304')			
	FULL	RAIL or ALS out	RAIL out	ALS out		Max Alt MDA(M)
A			1/2	3/4	1	90 740 (443) - 1
B						120 760 (463) - 1
C	1/2	3/4	3/4		1 1/2	140 760 (463) - 1 1/2
D			3/4	1	2	165 860 (563) - 2

MILITARY	Gnd speed-Kts						
	70	90	100	120	140	160	
	GS	3:00*	3:77	4:84	5:38	6:46	7:53
MAP at MM/D2.8 or FAF to MAP	4.4	3:46	2:56	2:38	2:12	1:53	1:39

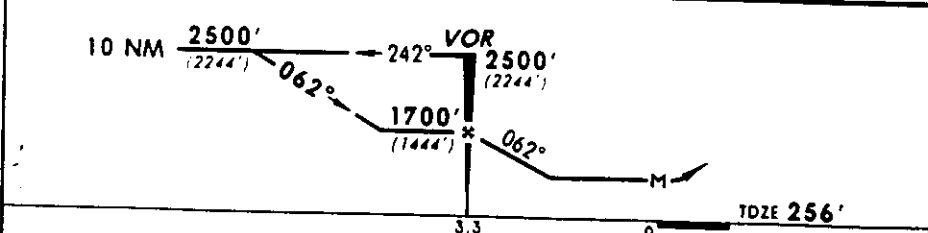
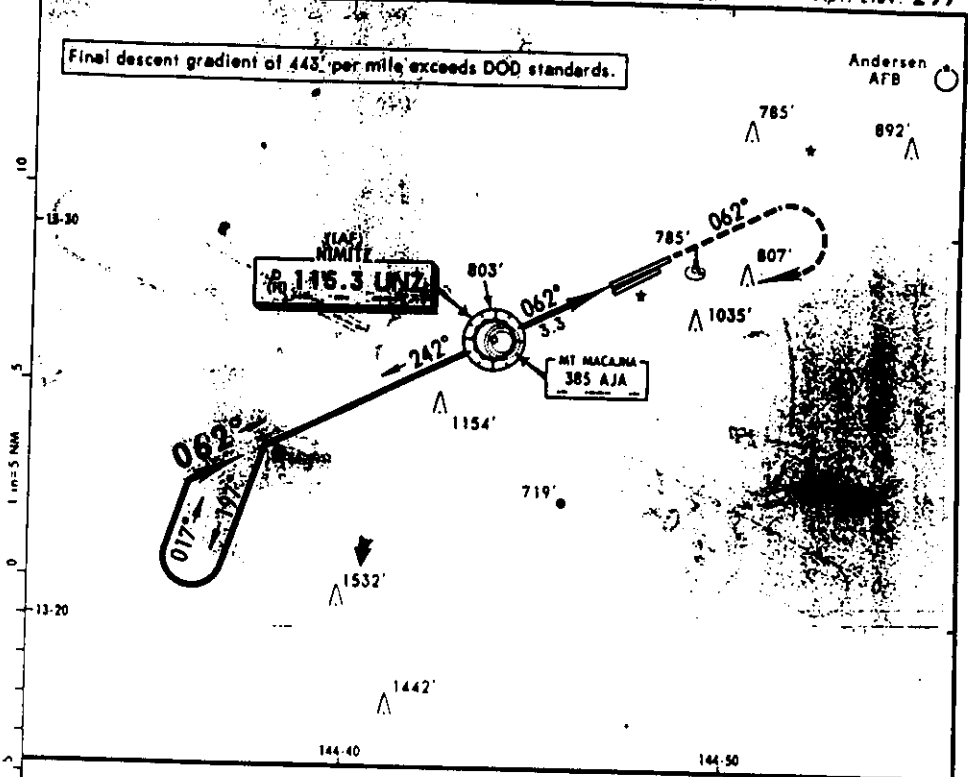
CONTINENTAL GUAM OPERATIONS 131.9  
 © JEPPESEN SANDERSON, INC. 1986, 1996. ALL RIGHTS RESERVED

*App Plates Accident A/C*  
*1 of 5*

ATIS 119.0  
 GUAM Approach (R) 119.8  
 AGANA Tower 118.1  
 Ground 121.9  
 Alt Set: INCHES  
 Trans level: FL 180  
 Trans alt: 18000' (17744')



GUAM  
 GUAM INTL  
 VOR Rwy 6L  
 VOR 115.3 UNZ  
 MSA UNZ VOR  
 Apt. Elev. 297'



MISSED APPROACH: Climb to 2500' outbound on UNZ VOR R-062, turn RIGHT, direct to UNZ VOR.

STRAIGHT-IN LANDING RWY 6L			CIRCLE-TO-LAND	
MDA(H) 720' (464')			Not Authorized Southeast of Rwy 6R-24L	
	RAIL out	ALS out	Max Kts	MDA(H)
A			90	740' (443') - 1
B	1/2	3/4	120	760' (463') - 1
C	3/4	1 1/4	140	760' (463') - 1 1/2
D	1	1 1/2	165	860' (563') - 2

MILITARY	Gnd speed Kts	70	90	100	120	140	160
VOR to MAP	3.3	2:50	2:12	1:59	1:39	1:25	1:14

CONTINENTAL GUAM OPERATIONS 131.9

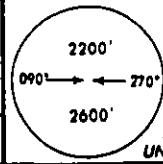
© JEPPESEN SANDERSON, INC. 1986, 1996. ALL RIGHTS RESERVED

App. Plates Accident A/C

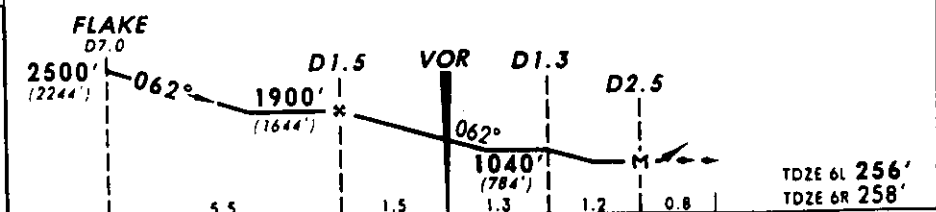
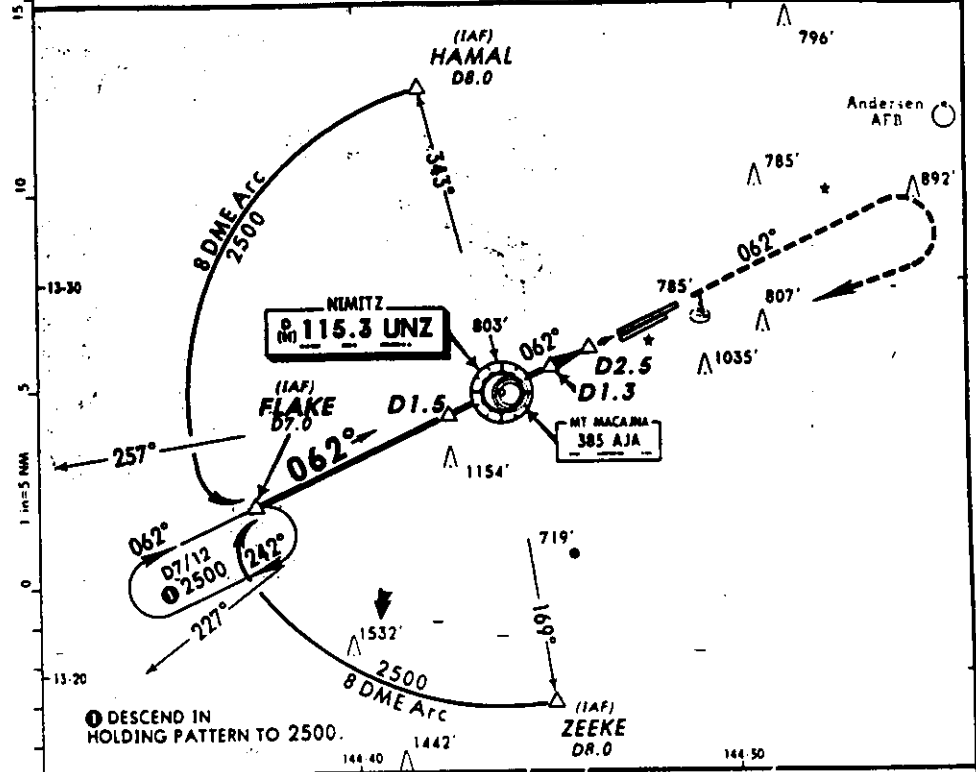
2 of 5

2

ATIS 119.0  
 GUAM Approach (R) 119.8  
 AGANA Tower 118.1  
 Ground 121.9  
 Alt Set: INCHES  
 Trans level: FL 180  
 Trans alt: 18000'(17744')



GUAM INTL  
 VOR DME Rwy 6L  
 VOR 115.3 UNZ  
 MSA UNZ VOR  
 Apt. Elev 297'



① MISSED APPROACH: Climb to 2500' outbound on UNZ VOR R-062, turn RIGHT direct FLAKE D7.0.  
 ② CAUTION: Missed approach minimum climb rate to 1500'. Controlling obstacle 1011'.

Grnd speed-Kts	60	120	180	240
Fl per min	245	490	735	980

STRAIGHT-IN LANDING RWY 6L		SIDESTEP LANDING RWY 6R		CIRCLE-TO-LAND	
Act's able to meet missed apch minimum climb rate		Act's unable to meet missed apch minimum climb rate		Not Authorized Southeast of Rwy 6R-24L	
MDA(H): 500'(244')		MDA(H): 760'(504')		MDA(H): 500'(242')	
	RAIL out	ALS out	RAIL out	ALS out	RAIL out
A	1/2	3/4	1	1	1
B	1/2	3/4	1	1	1
C	3/4	1	1 1/2	1 1/2	1 1/2
D	1	1	1 1/2	1 1/2	1 1/2

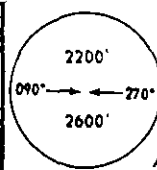
MAP #1 D7.5  
 CONTINENTAL GUAM OPERATIONS 131.9  
 CHANGES: Communications.

App. Plates Accident A/C

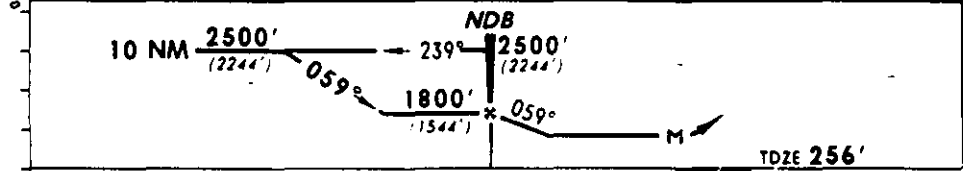
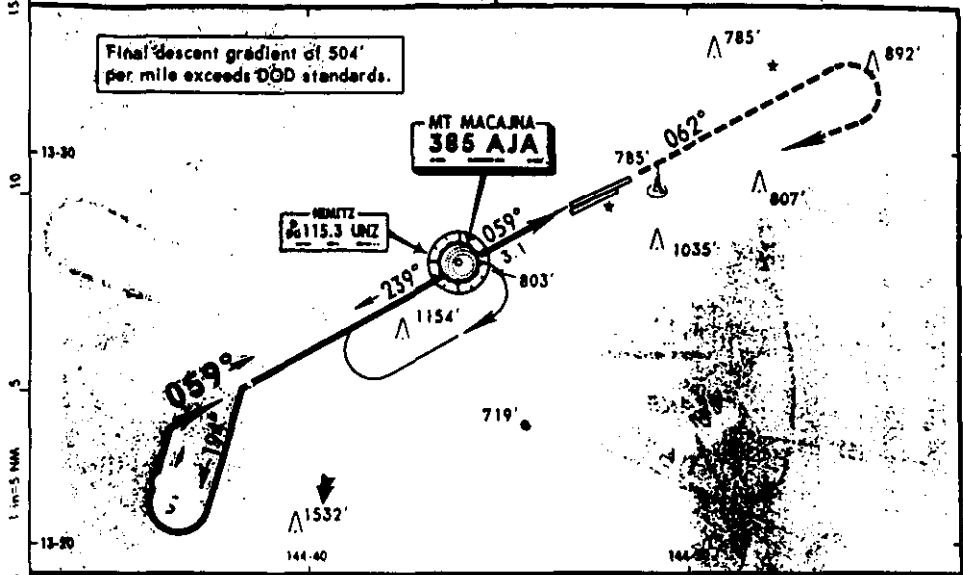
3 of 5

3

ATIS 119.0  
 GUAM Approach (R) 119.8  
 AGANA Tower 118.1  
 Ground 121.9  
 Alt Set: INCHES  
 Trans level: FL 180  
 Trans alt: 18000' (17744')



GUAM INTL  
 NDB Rwy 6L  
 NDB 385 AJA  
 Apt. Elev 297'



① MISSED APPROACH: Climb to 2500' on 062° bearing from AJA NDB, turn RIGHT direct AJA NDB. Controlling obstacle 1011'  
 ② CAUTION: Missed approach minimum climb rate to 1500'

Controlling obstacle	1011'
Grnd Speed-Kts	60 120 180 240
Ft per min	300 600 900 1200

STRAIGHT-IN LANDING RWY 6L			
Act able to meet missed approach minimum climb rate		Act unable to meet missed approach minimum climb rate	
MDA(H) 760' (504')		MDA(H) 1040' (784')	
RAIL out	ALS out	RAIL out	ALS out
A	3/4	1	1
B			1 1/4
C	1	1 1/2	2 1/4
D			2 1/2

CIRCLE-TO-LAND			
Not Authorized Southeast of Rwy 6R-24L			
Act able to meet missed approach minimum climb rate		Act unable to meet missed approach minimum climb rate	
Max Kts	MDA(H)	MDA(H)	
90	760' (463') - 1	1040' (743') - 1	
120	760' (463') - 1 1/2	1040' (743') - 1 1/4	
140	760' (463') - 1 1/2	1040' (743') - 2 1/4	
165	860' (563') - 2	1040' (743') - 2 1/2	

Grnd speed-Kts	70	90	100	120	140	160
NDB to MAP	3.1	2.39	2.04	1.52	1.33	1.20

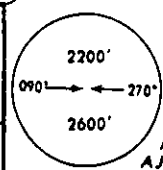
CONTINENTAL GUAM OPERATIONS 131.9

CHANGES: Communications. © JEPPESEN SANDERSON, INC., 1986, 1996. ALL RIGHTS RESERVED

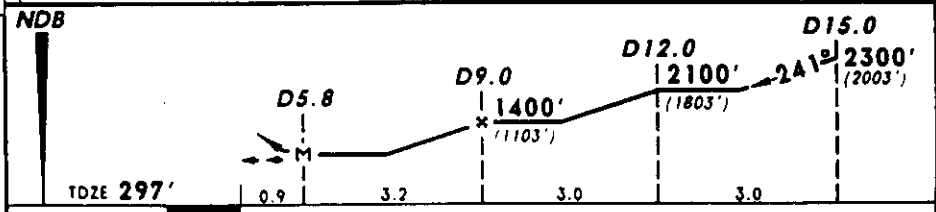
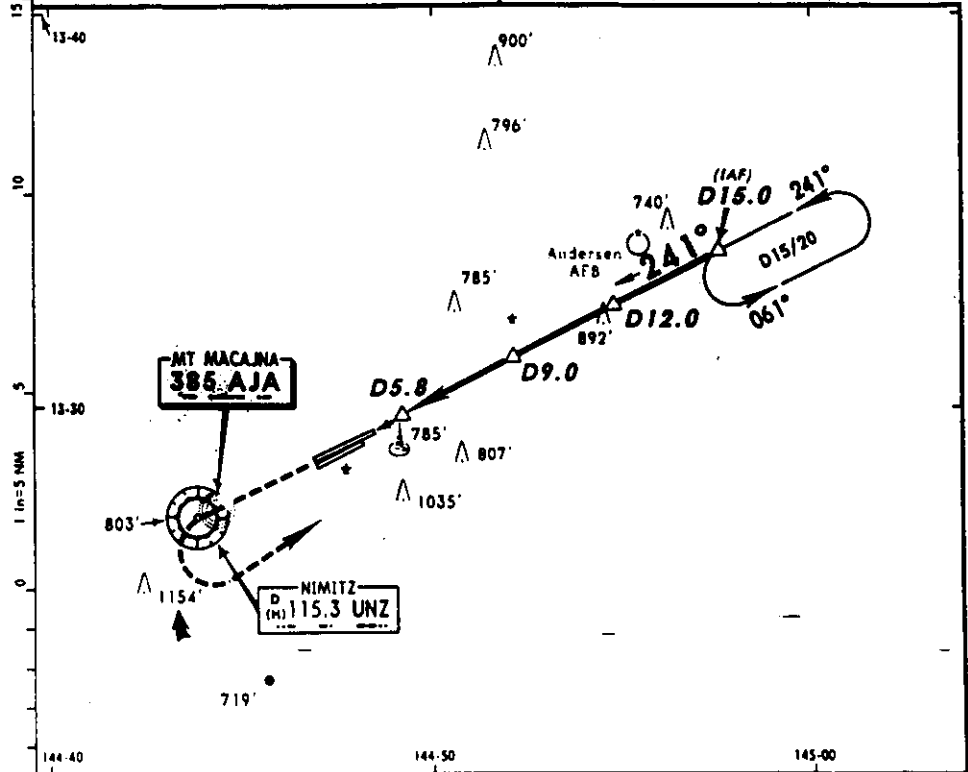
App. Plates Accident A/C  
 445

4

ATIS 119.0  
 GUAM Approach (R) 119.8  
 AGANA Tower 118.1  
 Ground 121.9  
 All Set: INCHES  
 Trans level: FL 180  
 Trans alt: 18000' (17703')



GUAMI  
 GUAM INTL  
 NDB DME Rwy 24R  
 NDB 385 AJA  
 MSA  
 AJA NDB  
 Apt. Elev 297'



**MISSED APPROACH:** Climb to 2300' direct AJA NDB, turn LEFT direct AJA NDB 061° bearing/D15.0.  
 CAUTION: Minimum missed approach climb rate.  
 Controlling obstacle 1011'.

Gnd speed-Kts	60	120	180	240
Ft per min	210	420	630	840

STRAIGHT-IN LANDING RWY 24R		CIRCLE-TO-LAND	
MDA(H): 1180'(883')		Not Authorized Southeast of Rwy 6R-24L	
		Max Kts	MDA(H)
A	1 1/4	90	1180'(883') - 1 1/4'
B		120	
C	2 1/4	140	1180'(883') - 2 1/4'
D	3	165	1180'(883') - 3'

MILITARY  
 MAP 01 D5.8  
 CONTINENTAL GUAM OPERATIONS 131.9  
 CHANGES Communications. © JEPPESEN SANDERSON INC. 1993, 1996. ALL RIGHTS RESERVED

App. Plates Accident A/C  
 5 of 5

5