
IV. *Observationes Astronomicae habitæ in Observatorio Bononiensi Anno 1727, a Cl. Eustachio Manfredi, R. S. S. Ex Epistola J. Baptistæ Carbone ad Isaacum de Sequeyra Samuda M. D. Coll. Med. Lic. & R. S. S.*

2. **J**anuarii St. N. h. 9. 45'. 47''. Immerf. 3ⁱ Satellitis in umbram 4. Telesc. ped. 14. h. 11. 53'. 38''. ejusdem Emerfio. Dub.
5. Jan. h. 6. 51'. 54''. Emerf. 1ⁱ Satell. Telesc. pedum 11. Bononiens. Clar.
7. Jan. h. 8. 54'. 12''. Emerf. 1ⁱ eodem Telesc. Clariff.
7. Febr. h. 5. 50'. 5''. Imm. 3ⁱ eodem Telesc.
h. 7. 52'. 54''. Emerf. ejusdem Telesc. ped. 14.
8. Febr. h. 8. 37'. 59''. Emerf. 2ⁱ Tel. ped. 11. aëre nonnihil nebuloso.
21. Aug. h. 13. 34'. 39''. Imm. 1ⁱ eodem Telesc.
6. Sept. h. 11. 55'. 15''. Imm. 1ⁱ eodem Telesc.
17. Sept. h. 10. 48'. 59''. Imm. 3ⁱ dub. eodem Telesc.
h. 12. 40'. 30''. Emerf. ejusdem. subdub. eodem Tel.

-
9. Mart. h. 8. 50'. 6''. Emerfit spica π . a limbo Lunæ obscuro.
-

Incipit

18. Sept. h. o. 27'. 21''. Incipit Venus occultari post
limbum Lunæ obscurum.
h. o. 28'. 13''. Immerfio totalis ♀.
h. i. 16'. 45''. Incipit ♀ emergere è limbo
☾ lucido.
h. i. 17. 50. Emerfit tota.
h. i. 46. 24. Nunc limbus præcedens ☾
illuminatus præcedit ♀ in
circulo horario 21'' tem-
poris; & limbus Borealis
☾ item illuminatus est au-
stralior ♀ 29'' temporis.
-

*THE Second Plate at the Front of this Trans-
action represents thirty-six Stones cut out of the
Bladder by the Lateral Operation, as it is now
improved by Mr. Cheffelden, Surgeon to HerMajesty
and St. Thomas's Hospital, and F. R. S. who pro-
duced them before the Society, and at the same
Time informed them, that the Person was sixty-
three Years of Age when he performed the Ope-
ration, and is notwithstanding perfectly recovered.*

F I N I S.

Fig. 1.

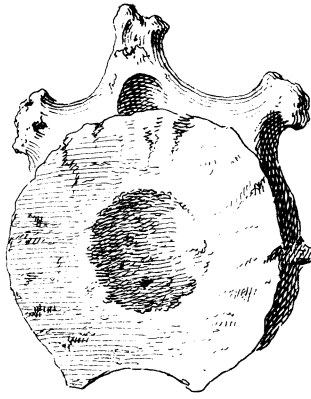


Fig. 3.

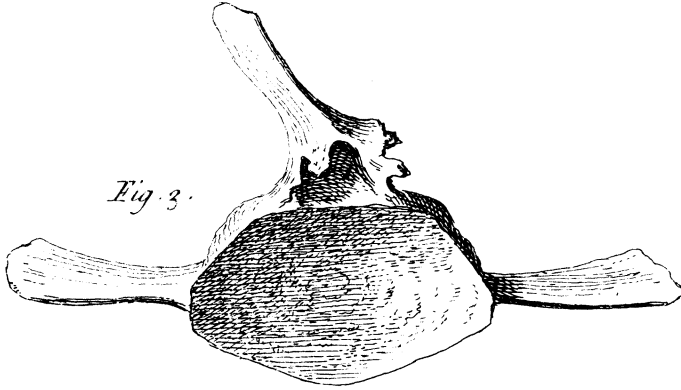
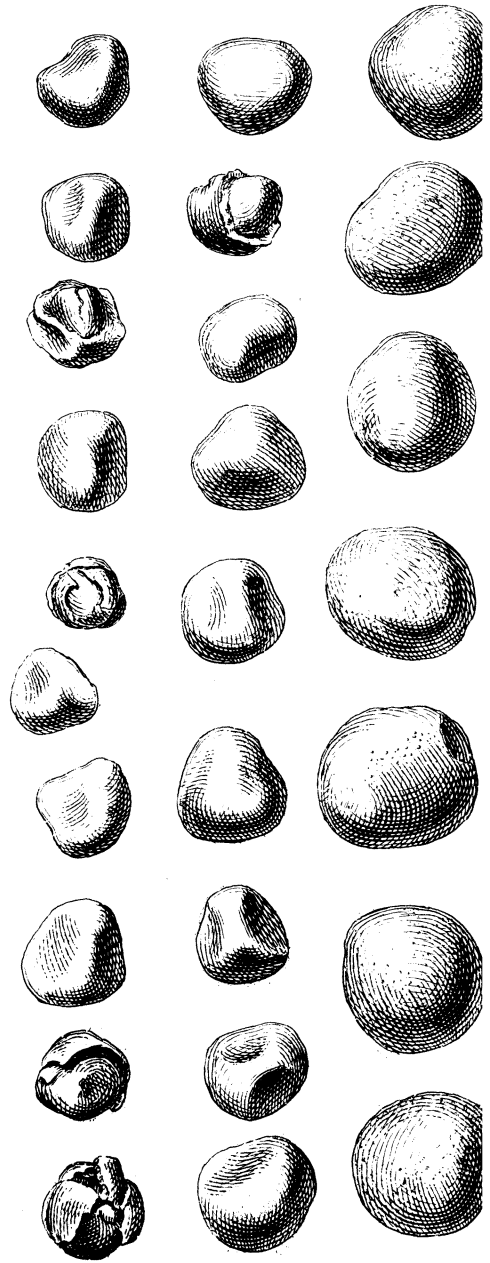
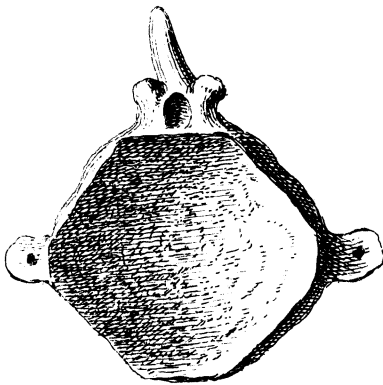


Fig. 2.



No 404. Plate 2.

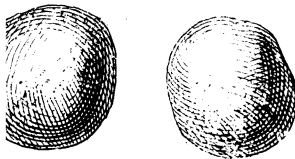
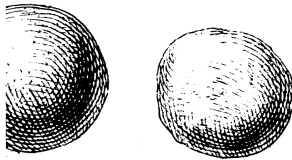
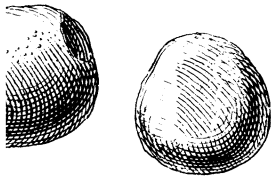
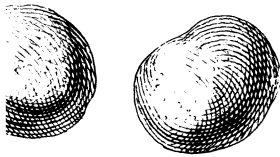
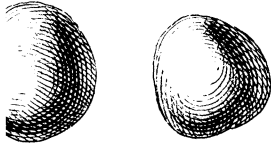
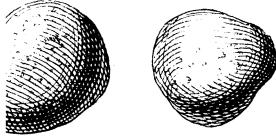


Fig. 1.

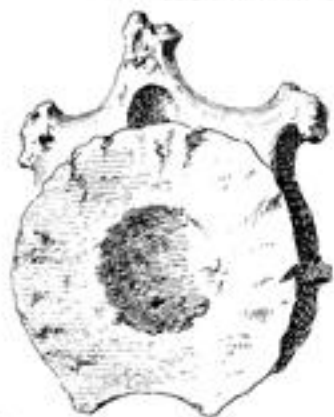


Fig. 3.



Fig. 2.

