

IV. *Historia Sectionis Viri ex Renum Calculo defuncti. Ex Epistolâ Viri Doctissimi P. Hardiſway, M. D. ad Gulielmum Stukeley, M. D. Coll. Med. Lond. & Reg. Soc. Soc.*

Homo ſeptuaginta circiter annos natus, ventris dolore horrendo correptus eſt die Octobris 19^o An. 1722. Acceſſerunt Vomitus & Urinæ difficultas, præ doloris atrocîa ſeſe erigere non poterat, ſed miſere incurvatus, dies nocteſque prope focum jacebat ejulans. Sexto morbi die, urinâ prorfus ſuppreſſâ, de dolorosâ circa Hypochondria ſtructurâ, perinde ac a funibus circumjectis, querebatur, poſtea de pondere quodam in veſicâ moleſto, quaſi Rapi majoris, (ſic aiebat) inibi hoſpitanſis. Omnibus in pejus ruentibus, die morbi duodecimo ad plures abiit. Cadavere aperto veſicam ſecuimus, quam ab ullis vel minimis calculi veſtigiiſ immunem invenimus; in utroque autem rene (multâ aquâ refertis) repertus eſt calculus, (*Fig. 1, 2.*) inſignis, ſcaber & multiplici ramo per parenchyma ſe diſpergens, quem integrum extrahere nullâ arte potuiſſes, niſi totâ prius fruſtulatim decerptâ carne. Ramorum maximus in ureteris caput ſe inſinuans, perbelle adeo id occupaverat, ut ampulla obturamento ſuo arctius occludi vix poſſet. Ulterius ſcrutari nobis non licuit, ideo unum tantum addam, nempe, quod Omentum inſtar ſarciæ anguſtioris ſub hepate retractum deliteſcebat. Pauper erat & corpore athletico, ſemper ſanus, niſi quod a paucis annis, aliquando ſabuloſa per urinas excerneret.

Calculus Renis sinistri

Calculus Renis dexteri

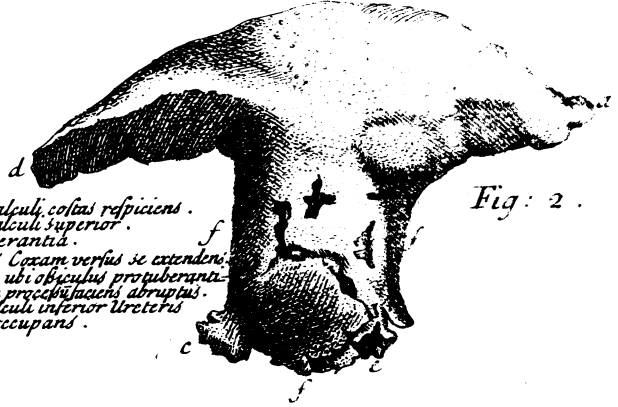
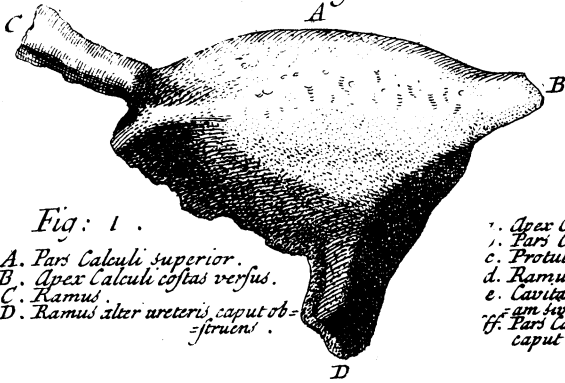


Fig: 1.

- A. Pars Calculi superior.
- B. Apex Calculi costas versus.
- C. Ramus.
- D. Ramus alter ureteris, caput obstruens.

- a. Apex Calculi, costas respiciens.
- b. Pars Calculi superior.
- c. Protuberantia.
- d. Ramus Coxae versus se extendens.
- e. Cavitas ubi obiculus protuberantia quae super processum faciens abruptus.
- f. Pars Calculi inferior Ureteris caput occupans.

Fig: 2.

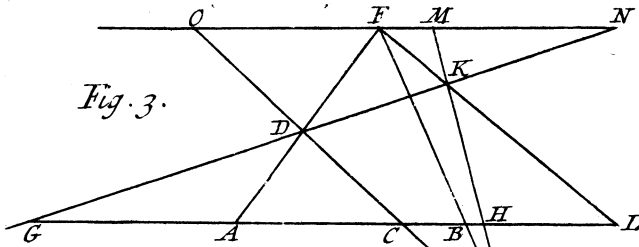


Fig. 3.

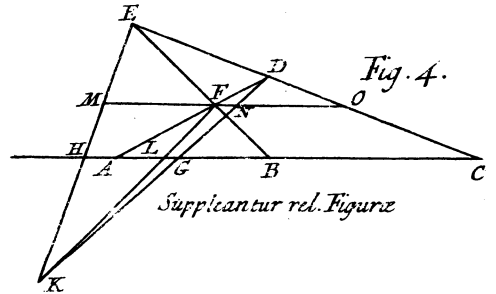


Fig. 4.

Supplicatur rel. Figuræ

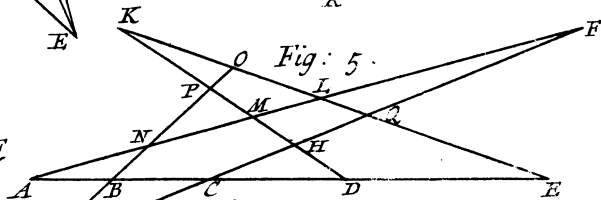


Fig: 5.

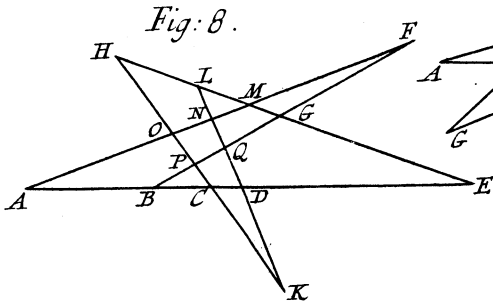


Fig: 8.

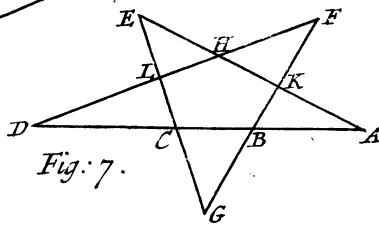


Fig: 7.

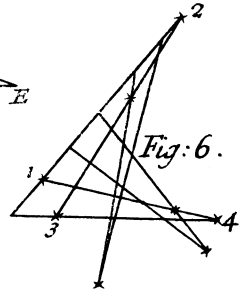


Fig: 6.

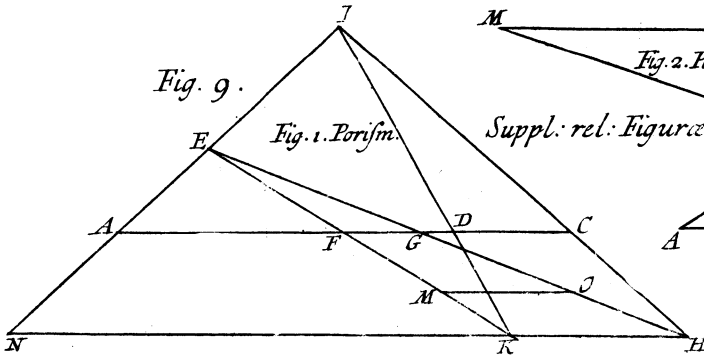


Fig. 9.

Fig. 1. Porism.

Suppl. rel. Figuræ

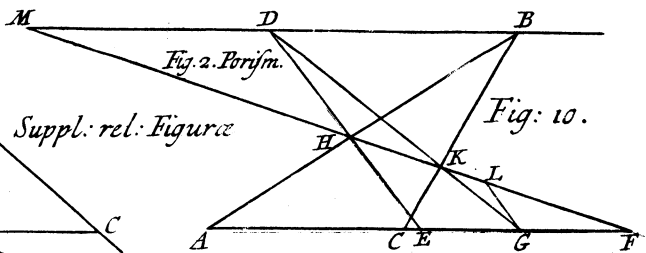


Fig. 2. Porism.

Fig: 10.

Fig. u.

