

The logo features a red circle at the top, a green stylized 'W' shape in the center, and a blue circular arc at the bottom, all set against a black background.

Algemene ledenvergadering  
Utrecht, 24 maart 2012

**WIKIMEDIA**  
**NEDERLAND**



Wikimedia  
Nederland

2008

Wikimedia  
Nederland

2011



Wikimedia  
Nederland

2008

Bestuur en  
(actieve) leden

9+1

Trainingen, lezingen

1+x

WCN

internationaal:  
chapters  
conference

ALVen

2

Nieuwsbrieven,  
folders

3+2

Apart: zaak Sijthoff



# Wikimedia Nederland

# 2008/2011

	2008	2011
Bestuursvergaderingen	9+1	13+7
Alg. ledenvergaderingen	2	3
Nieuwsbrieven	3+x	7+x
Bijeenkomsten	WCN	WCN, Jub. EN, Jub. NL, stamtafels, wikizaterd.
Internationaal	chapters conf.	GLAMcamp (+veel activ. in buitenland)
Trainingen	1	3-4
Lezingen	(Hay, Ronald)	(waarschijnlijk veel meer)
PR-materiaal	2 leaflets	website, roll-ups, stickers, buttons, lanyards enz.
Apart	zaak Sijthoff	WLM, Europeana



Wikimedia Nederland

2008/2011

	2008	2011
Bestuursleden	5 (vanaf september: 4)	7
Actieve leden	?	?
Communicatiemedewerker		1 (vanaf april, 0,5 fte)
activiteitsgebonden		2 (E. Arend, J. Tangelder)



WIKIMEDIA  
NEDERLAND

GLAMcamp Amsterdam,  
december 2011





Kantoren

NEB

The logo features a central green stylized figure with two arms raised, set against a black background. This figure is enclosed within a blue circular border. Above the figure is a solid red circle.

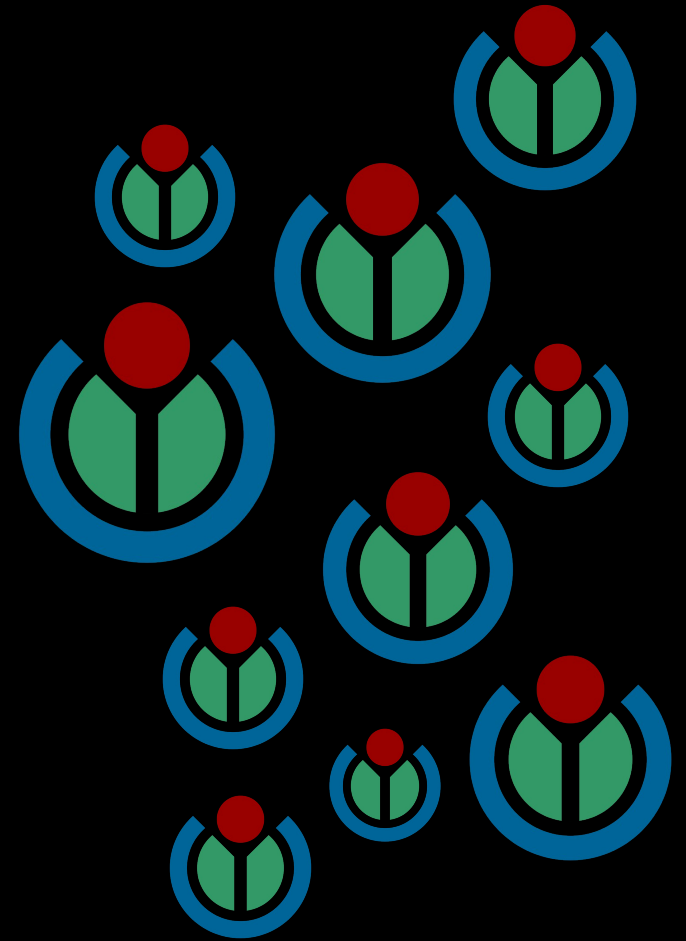
Algemene ledenvergadering  
Utrecht, 24 maart 2012

**WIKIMEDIA**  
**NEDERLAND**

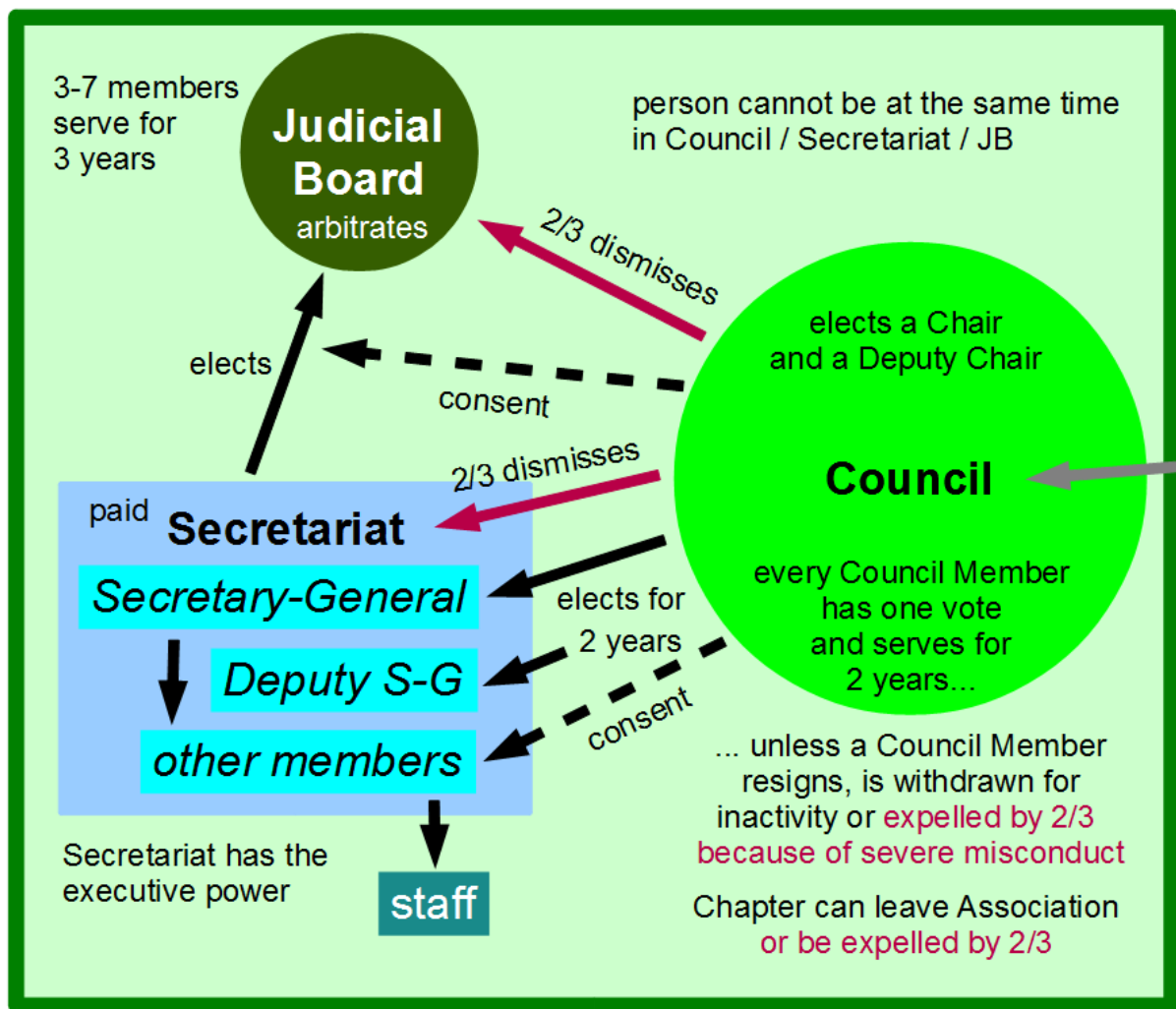




**WIKIMEDIA**  
**FOUNDATION**



# Wikimedia Chapters Association



to represent Chapters and support them

Wikimedia France

Wikimedia Venezuela

Wikimedia Australia

Wikimedia NYC

...

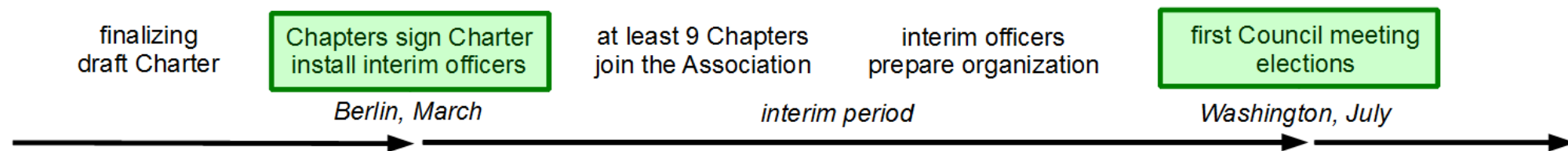
Chapters pay annual due

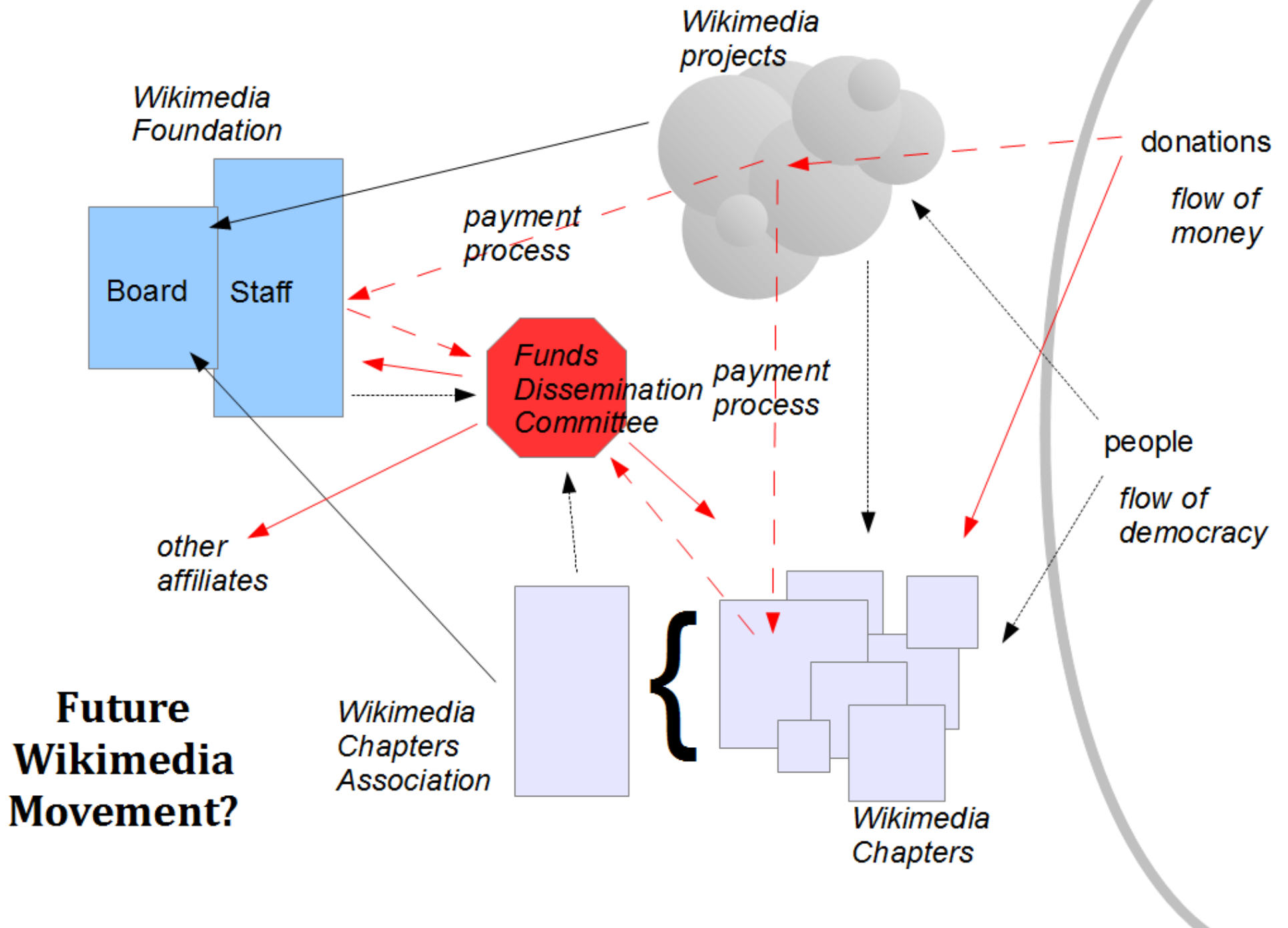
Chapters choose one Council Member each in a way they like

A Council Member may hold a position in a Chapter

Wikimedia Foundation defines what is a Wikimedia Chapter

## roadmap





The logo features a red circle at the top, a green stylized 'W' shape in the center, and a blue circular arc at the bottom, all set against a black background.

Algemene ledenvergadering  
Utrecht, 24 maart 2012

**WIKIMEDIA**  
**NEDERLAND**