

VAPEURS. LIGNE AMERICAINE

Four Steamships. La traversée la plus courte et la plus agréable...

LIGNE RED STAR. Four Amvets. La route la plus courte pour la Belgique et la France...

COMPAGNIE GENERALE TRANS-ATLANTIQUE. Centre New-York et le Havre...

UBOWELL STEAMSHIP CO. NEW YORK DIRECT SERVICE. LONDON, BRISTOL, SOUTHAMPTON...

GUIDE COMMERCIAL. ANNUELS 1896. A. Margis, Secrétaire en Chef, Année 73.

REMERCIEMENTS. M. M. Lavoisier, Secrétaire en Chef.

REMERCIEMENTS. M. M. Lavoisier, Secrétaire en Chef.

REMERCIEMENTS. M. M. Lavoisier, Secrétaire en Chef.

REMERCIEMENTS. M. M. Lavoisier, Secrétaire en Chef.

REMERCIEMENTS. M. M. Lavoisier, Secrétaire en Chef.

REMERCIEMENTS. M. M. Lavoisier, Secrétaire en Chef.

A VISTA OF FASHION. WARMER WRAPS AND SUBSTANTIAL GOWNS FOR AUTUMN.

Capots, Short Coats, Long Coats and Vests are All in Evidence. Covert Coatings and Fine Fashioned Cloths Popular for Wraps—Coat and Skirt Costumes.

The first touch of autumn is upon us, and it is high time to be thinking about warmer wraps and other substantial garments of cloth, tweed and serge.

Autumn caps in green velvet attract attention from their novel trimming. A festoon of Russian sable extends from shoulder to shoulder, terminating in loose tails that fall over the top of the cap.

Cost and skirt costumes are as popular as ever and show this season in some instances high flaring collars. Braiding is a feature on some of these costumes.

There is an attempt to popularize tartan material. At present the darker tartans are chosen and are only used in small quantities as vests and underclothes.

COATS WITH CAPE SLEEVES. These are chosen and are only used in small quantities as vests and underclothes.

Take 7 pounds of yellow tomatoes, peeled, 7 pounds of sugar and juice of 8 lemons. Let stand overnight.

When Selecting a Carpet. Be sure and take a carpet the colors of which harmonize with the wall paper and hangings.

Take 7 pounds of yellow tomatoes, peeled, 7 pounds of sugar and juice of 8 lemons. Let stand overnight.

Take 7 pounds of yellow tomatoes, peeled, 7 pounds of sugar and juice of 8 lemons. Let stand overnight.

THE HOUSEHOLD LAMPS. To Polish the Chimney or Well, but Don't Neglect Burner and Wick.

Some important but often unheeded portions of the household lamps require attention as follows in Good Housekeeping.

Another important axiom is that the lamp should never be left with the wick turned down below the wick cone.

Another important axiom is that the lamp should never be left with the wick turned down below the wick cone.

Another important axiom is that the lamp should never be left with the wick turned down below the wick cone.

Another important axiom is that the lamp should never be left with the wick turned down below the wick cone.

Another important axiom is that the lamp should never be left with the wick turned down below the wick cone.

Another important axiom is that the lamp should never be left with the wick turned down below the wick cone.

Another important axiom is that the lamp should never be left with the wick turned down below the wick cone.

Another important axiom is that the lamp should never be left with the wick turned down below the wick cone.

Another important axiom is that the lamp should never be left with the wick turned down below the wick cone.

THE NEW WALL PAPERS. Papers in Châteaus and Cretonnes Patterns.

All paperings shown this season have a tendency to soft, refined coloring. A Marie Antoinette design in the tenderest blue, pink and green is a reproduction of a veritable wall covering of the period from which it takes its name.

Another important axiom is that the lamp should never be left with the wick turned down below the wick cone.

Another important axiom is that the lamp should never be left with the wick turned down below the wick cone.

Another important axiom is that the lamp should never be left with the wick turned down below the wick cone.

Another important axiom is that the lamp should never be left with the wick turned down below the wick cone.

Another important axiom is that the lamp should never be left with the wick turned down below the wick cone.

Another important axiom is that the lamp should never be left with the wick turned down below the wick cone.

Another important axiom is that the lamp should never be left with the wick turned down below the wick cone.

Another important axiom is that the lamp should never be left with the wick turned down below the wick cone.

Another important axiom is that the lamp should never be left with the wick turned down below the wick cone.

FLOWERS AND VASES. REMARKS BY ONE WHO ENJOYS MAKING BOUQUETS.

The Arrangement of Flowers—An Old Time Nosegay in a China Bowl—What to Do With Chrysanthemums—How Heliotrope is Most Effective.

Another important axiom is that the lamp should never be left with the wick turned down below the wick cone.

Another important axiom is that the lamp should never be left with the wick turned down below the wick cone.

Another important axiom is that the lamp should never be left with the wick turned down below the wick cone.

Another important axiom is that the lamp should never be left with the wick turned down below the wick cone.

Another important axiom is that the lamp should never be left with the wick turned down below the wick cone.

Another important axiom is that the lamp should never be left with the wick turned down below the wick cone.

Another important axiom is that the lamp should never be left with the wick turned down below the wick cone.

Another important axiom is that the lamp should never be left with the wick turned down below the wick cone.

Another important axiom is that the lamp should never be left with the wick turned down below the wick cone.

MUSIC PUPILS. Judgment and Taste Required to Interest Them—Four Hand Pieces.

How shall we interest our pupils, hold their attention and bring out the best work for a problem to many teachers of music. A teacher writing in The Educator says: First and perhaps one of the hardest tasks of the teacher is for him to be always full of interest himself and to let the pupil feel it, because you cannot expect a child to show an interest in a lesson if you are indifferent and careless and only trying to hurry through and on to the next one.

Another important axiom is that the lamp should never be left with the wick turned down below the wick cone.

Another important axiom is that the lamp should never be left with the wick turned down below the wick cone.

Another important axiom is that the lamp should never be left with the wick turned down below the wick cone.

Another important axiom is that the lamp should never be left with the wick turned down below the wick cone.

Another important axiom is that the lamp should never be left with the wick turned down below the wick cone.

Another important axiom is that the lamp should never be left with the wick turned down below the wick cone.

Another important axiom is that the lamp should never be left with the wick turned down below the wick cone.

Another important axiom is that the lamp should never be left with the wick turned down below the wick cone.

Another important axiom is that the lamp should never be left with the wick turned down below the wick cone.

MOURNING COSTUMES. The Fabric Employed—More Crapes Used Than Formerly—Black Widows' Dress.

It is a curious fact that while fashions may change, the fabrics used for mourning costumes remain the same. Henrietta cloth is, when trimmed with crape, considered the deepest mourning. Serge and crepon, showing long, deep waves exactly like crapes, are also worn.

Another important axiom is that the lamp should never be left with the wick turned down below the wick cone.

Another important axiom is that the lamp should never be left with the wick turned down below the wick cone.

Another important axiom is that the lamp should never be left with the wick turned down below the wick cone.

Another important axiom is that the lamp should never be left with the wick turned down below the wick cone.

Another important axiom is that the lamp should never be left with the wick turned down below the wick cone.

Another important axiom is that the lamp should never be left with the wick turned down below the wick cone.

Another important axiom is that the lamp should never be left with the wick turned down below the wick cone.

Another important axiom is that the lamp should never be left with the wick turned down below the wick cone.

Another important axiom is that the lamp should never be left with the wick turned down below the wick cone.

CHEMINS DE FER. Bureau de Billets de 150 Villes.

Coils St-Charles et Canal. Depot de Passagers. Tête de l'Avance Expland. TRAINS DE SERVICE QUOTIDIEN.

Another important axiom is that the lamp should never be left with the wick turned down below the wick cone.

Another important axiom is that the lamp should never be left with the wick turned down below the wick cone.

Another important axiom is that the lamp should never be left with the wick turned down below the wick cone.

Another important axiom is that the lamp should never be left with the wick turned down below the wick cone.

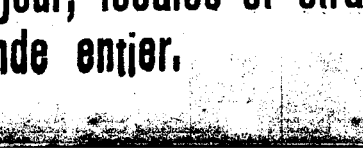
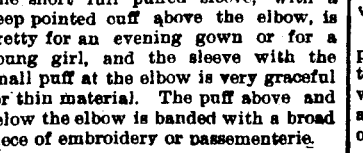
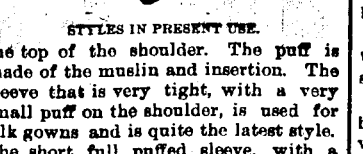
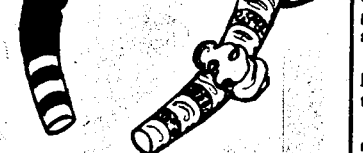
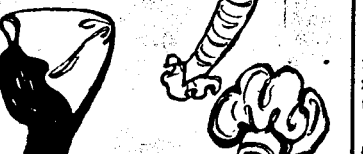
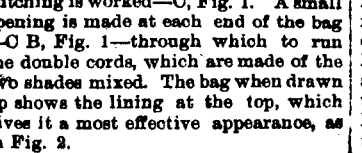
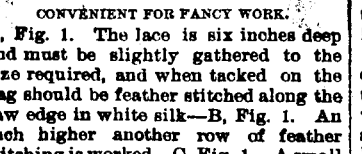
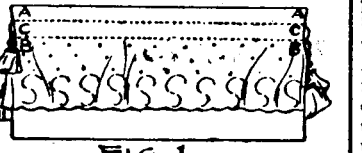
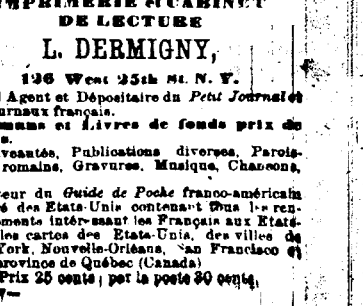
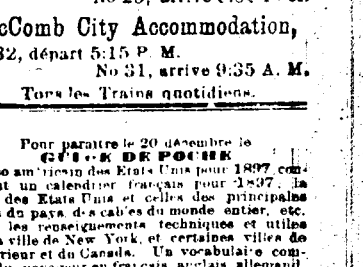
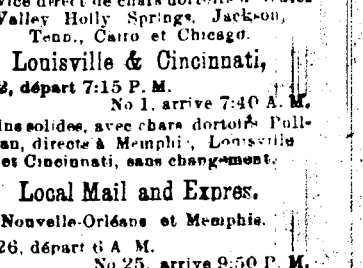
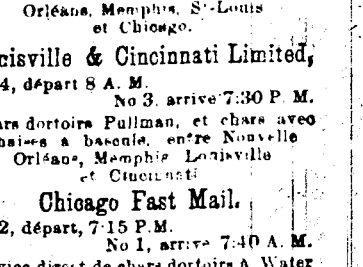
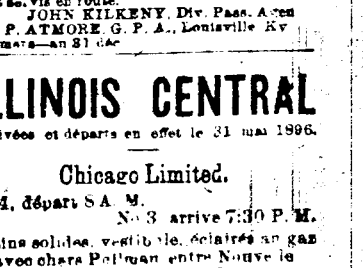
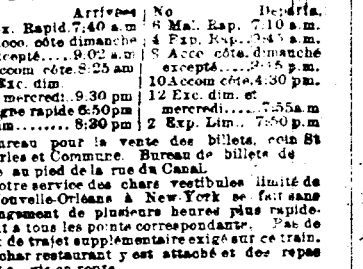
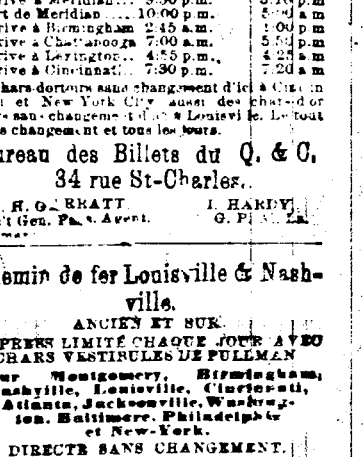
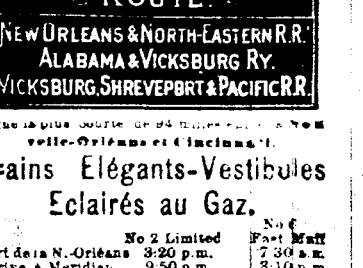
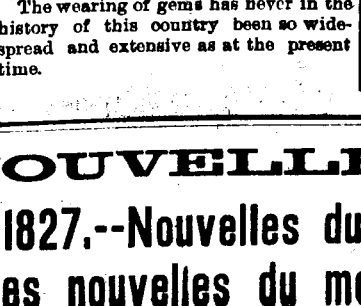
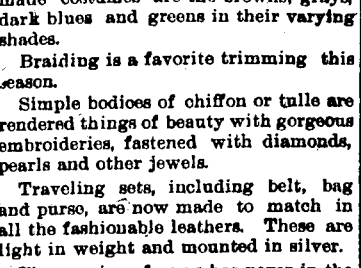
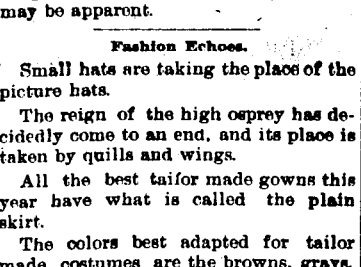
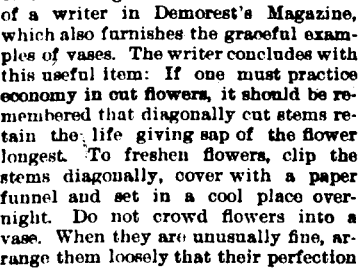
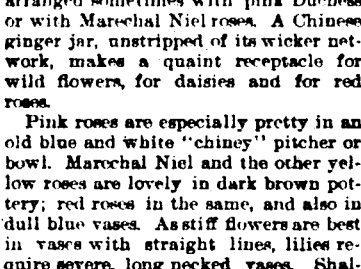
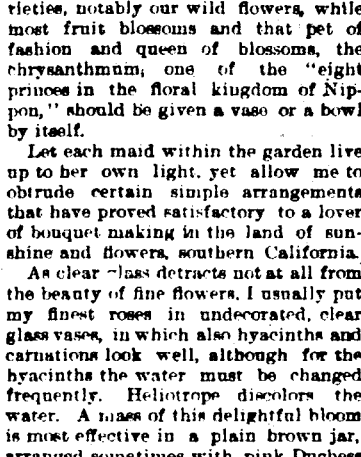
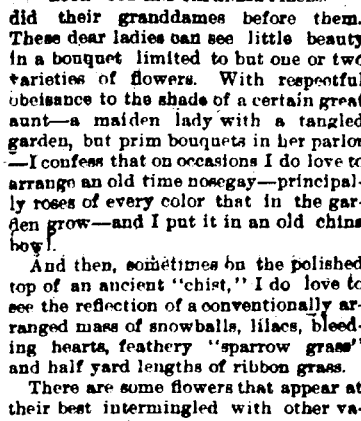
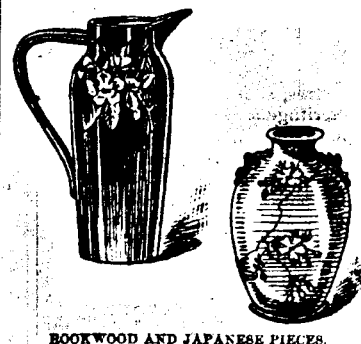
Another important axiom is that the lamp should never be left with the wick turned down below the wick cone.

Another important axiom is that the lamp should never be left with the wick turned down below the wick cone.

Another important axiom is that the lamp should never be left with the wick turned down below the wick cone.

Another important axiom is that the lamp should never be left with the wick turned down below the wick cone.

Another important axiom is that the lamp should never be left with the wick turned down below the wick cone.



L'ABELLE DE LA NOUVELLE-ORLÉANS, Seul journal français quotidien au Sud, fondé le 1er septembre 1827.--Nouvelles du jour, locales et étrangères.--Services spéciaux et par fils des dernières nouvelles du monde entier.