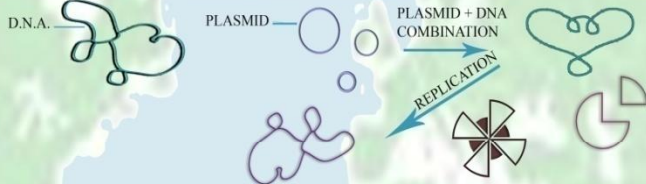


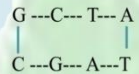
SHEETS

CONCEPT :- BACTERIAL EXPLANATION OF VERY CLOSE , ORGANISM RELATION IN TERMS OF ARCHITECTURE

1. **PLASMID** :- A PLASMID IS A DNA MODULAR THAT IS SEPRATE FORM , AND CAN REPLICATE INDEPENDENTLY OF THE CHROMOSOL D.N.A. THEY ARE STANDAED AND IN MAY CASE CERCLAR. PLASMID USUALLY OCCURE NATURALLY , BUT ARE SOME TIME FOUND IN EUKARVIC ORGANISNS . (HUMANBEING) . PLASMIDS ARE CONSIDERED TRANSFRABLE GENETI ELEMENTS.



1. DISCRPTION OF PLASMID IN REFERENCE OF ARCHI. BLOCK :- THERE IN PLASMID WE HAVE TO TWO STRAINS ONE ON INSIDE LARGER AND SECOND ON OUTER LAYER. THESE ARE WITH THE NAME 'G' , 'C' , 'T' , 'A' . THEY ALL ARE CREAT A BONDING WITH EACH OTHER WHICH IS SHOWN BELOW.



SOME TIME BONDING B/W THE STRAINS GET MISMATCH , THAT PROCESS OF MISMATCH IS CALLED INTRINES, AND SOME TIME THEY CORECTLY MATCHED, THERE WE GET SOME FREE SPACE AND THESE FREE SPACE COULD BE USED IN FUTURE FOR MANY PURPOSES. THATS WHY I USED OPEN GROUND AS A INTRONES.

2. **CODS** :- THERE WE HAVE SOME CODES INSIDE THE CROMOSOMAL D.N.A. THESE CODS ARE FIXIED FOR THE WHOLE LIFE OF D.N.A. THEY CAN NEVER BE CHANGED THATS WHY I AM USING PARKING AS A CODE OF CROMOSOMAL D.N.A.

CROMOSOMAL D.N.A. → CODE → PARKING

3. **RESTRICTED SITE** :- THERE WE HAVE SOME RESTRICTED SITE INSIDE THE CROMOSOMAL D.N.A. IN THIS RESTRICTED SITE NO INTRIDER ELEMENT CAN WORK. THATS WHY I USE TO MAKE DAY CARE AS RESTRICTED SITE.

RESTRICTED SITE → DAY CARE

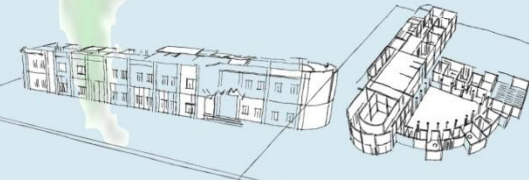
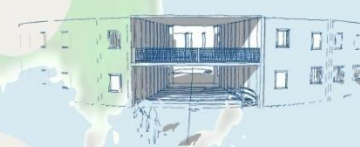
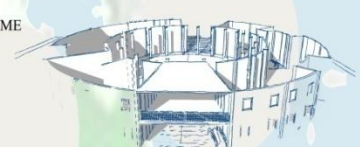
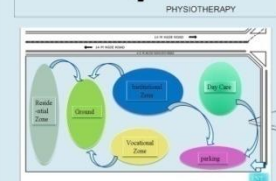
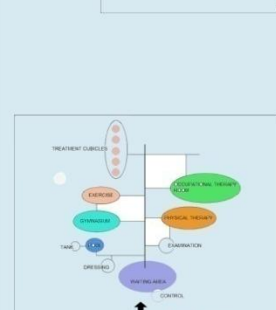
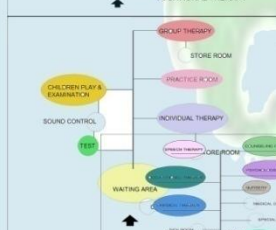
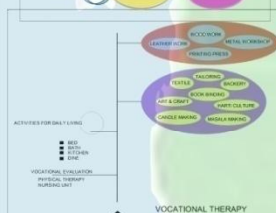
4. **BLANK SESION** :- THERE ALSO WE HAVE SOME BLANK SESION WHERE MANY ENZYMES ARE STORED FOR A PERTICULAR TIME PERIOD. THATS WHY PEOPLE CAN STAY FOR THERE WHOLE TREATMENT PERIOD.

OPERATING UNIT → ADMINISTRATION BLOCK

5. **ORIGNI OF REPLICATION** :- THERE ARE SEPRATE OPERATING UNIT WHICH IS USED TO CONTROLLE WHOLE CROMOSOMAL D.N.A. PROCESS. ADMINISTRATION BLOCK WORK AS A OPERATING UNIT THATS WHY I USED THEM ALL AS A CROMOSOMAL OPERATING UNIT.

6. **D.N.A.** :- BACTERIAL CELL MONITERED ALL SINGLE MONITORED BY D.N.A. THATS WHY I AM USING MY INSTITUTIONAL BLOCK AS A MONITERED D.N.A.

DNA AS A INSTITUTIONAL ZONE



AREA STATEMENT

SHEET NAME

CONCEPT

DIRECTION

SCALE

ALL DIM. ARE IN METRES

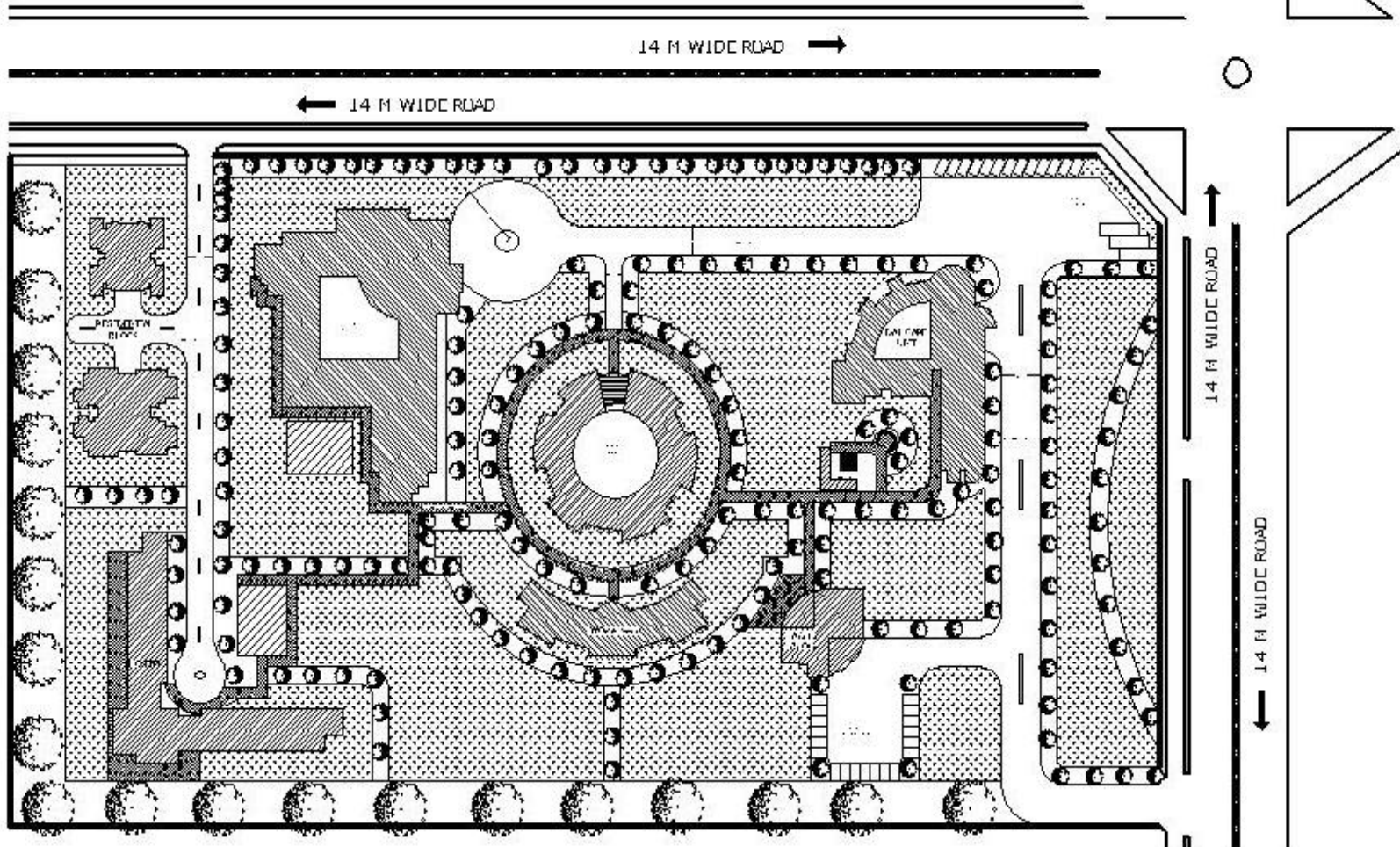
SHEET NO

REHABILITATION CENTRE FOR MENTALLY CHALLENGED

THESES
2011



ABHAY SINGH BHATI
B.Arch AR-0609
FINAL YEAR
M.L.T.S GWALIOR



KEY PLAN



AREA STATEMENT

SHEET NAME
LANDSCAPE DETAIL

DIRECTION



SCALE
1:500

ALL DIM. ARE
IN METRES

SHEET NO

- ADMINISTRATIVE BLOCK
- DAYCARE BLOCK
- VOCATIONAL TRAINING CENTRE
- WORKSHOP
- SCHOOL BLOCK
- HOSTEL BLOCK
- 3BHK G+A APARTMENT
- 2BHK G+A APARTMENT
- PLAYING AREA
- PARKING

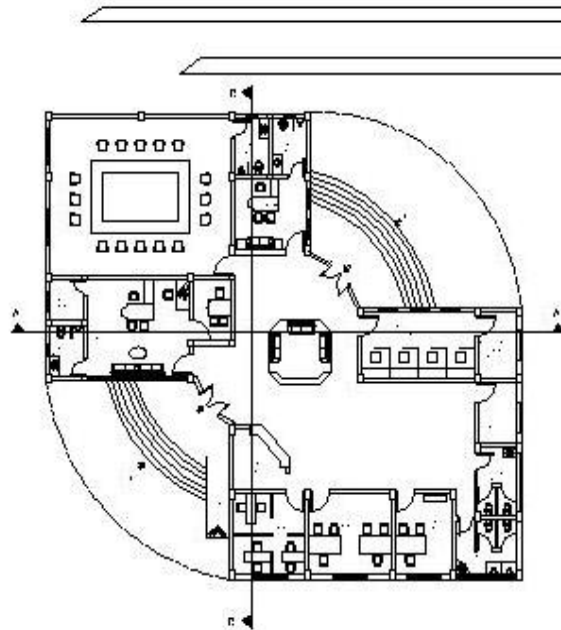
NO.	DESCRIPTION	UNIT	QUANTITY
1
2
3
4
5
6
7
8
9
10
11
12
13
14
15
16
17
18
19
20

REHABILITATION CENTRE FOR MENTALLY CHALLENGED

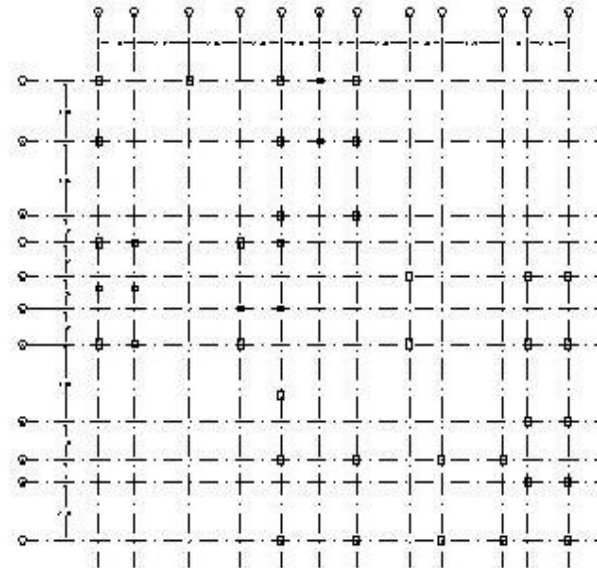
THESES
2011



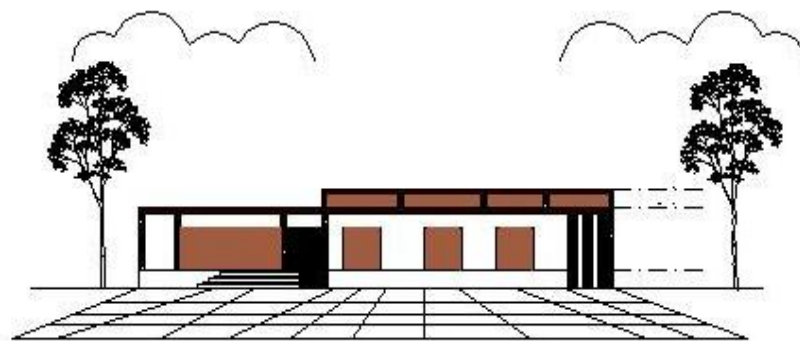
ABHAY SINGH BHATI
B.Arch AR-06-001
FINAL YEAR
M.L.T.S GWALIOR



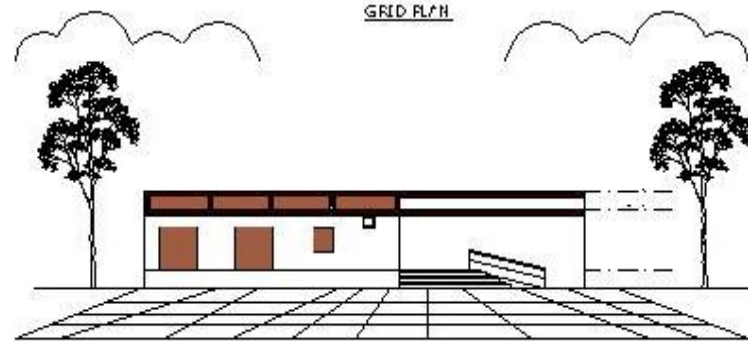
ADMINISTRATIVE BLOCK



GRID PLAN



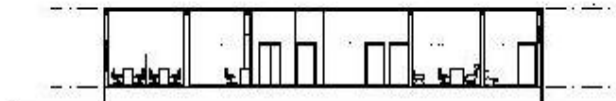
FRONT ELEVATION



LEFT SIDE ELEVATION



SECTION-AA



SECTION-BB

KEY PLAN



AREA STATEMENT

SHEET NAME
ADMIN BLOCK
FLOOR PLAN
ELEVATIONS
SECTIONS

DIRECTION



SCALE
1:120

ALL DIM ARE
IN METRES

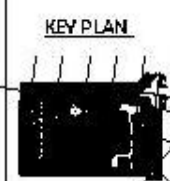
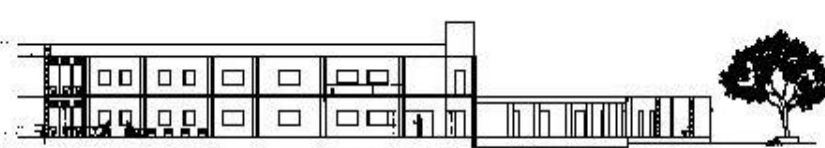
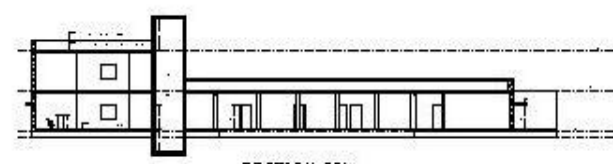
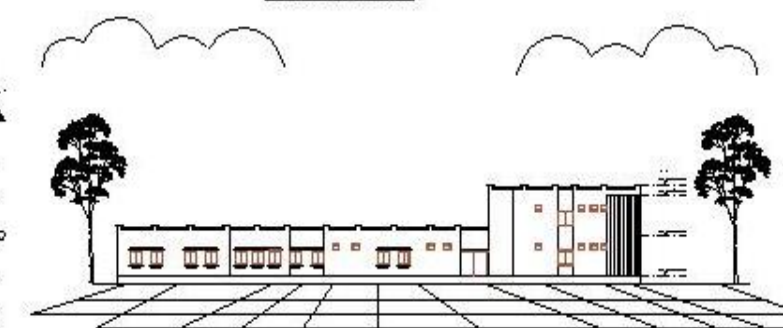
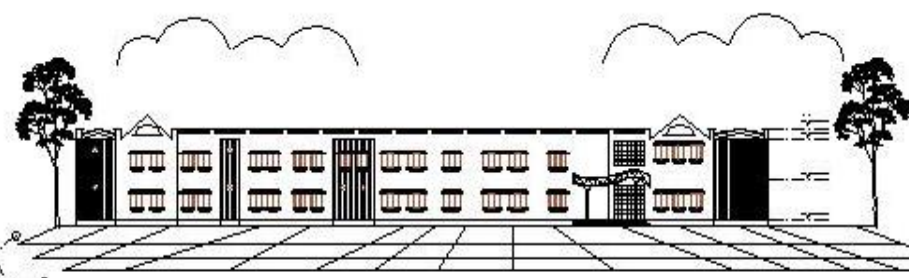
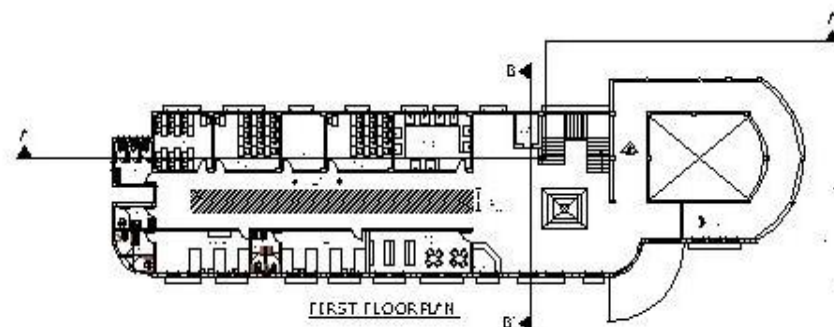
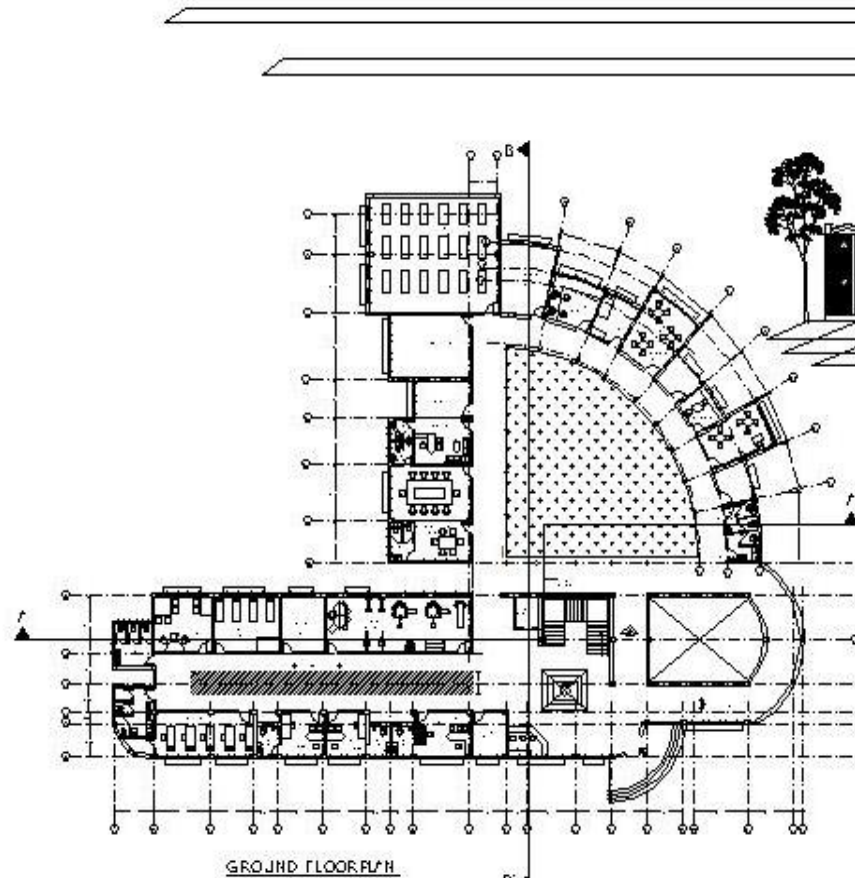
SHEET NO

REHABILITATION CENTRE FOR MENTALLY CHALLENGED

THESES
2011

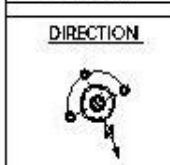


ABHAY SINGH BHATI
B.Arch AR-06-001
FINAL YEAR
M.L.T.S GWALIOR



AREA STATEMENT

SHEET NAME
DAYCARE BLOCK
FLOOR PLAN
ELEVATIONS
SECTIONS



SCALE
1:200
ALL DIM ARE
IN METRES

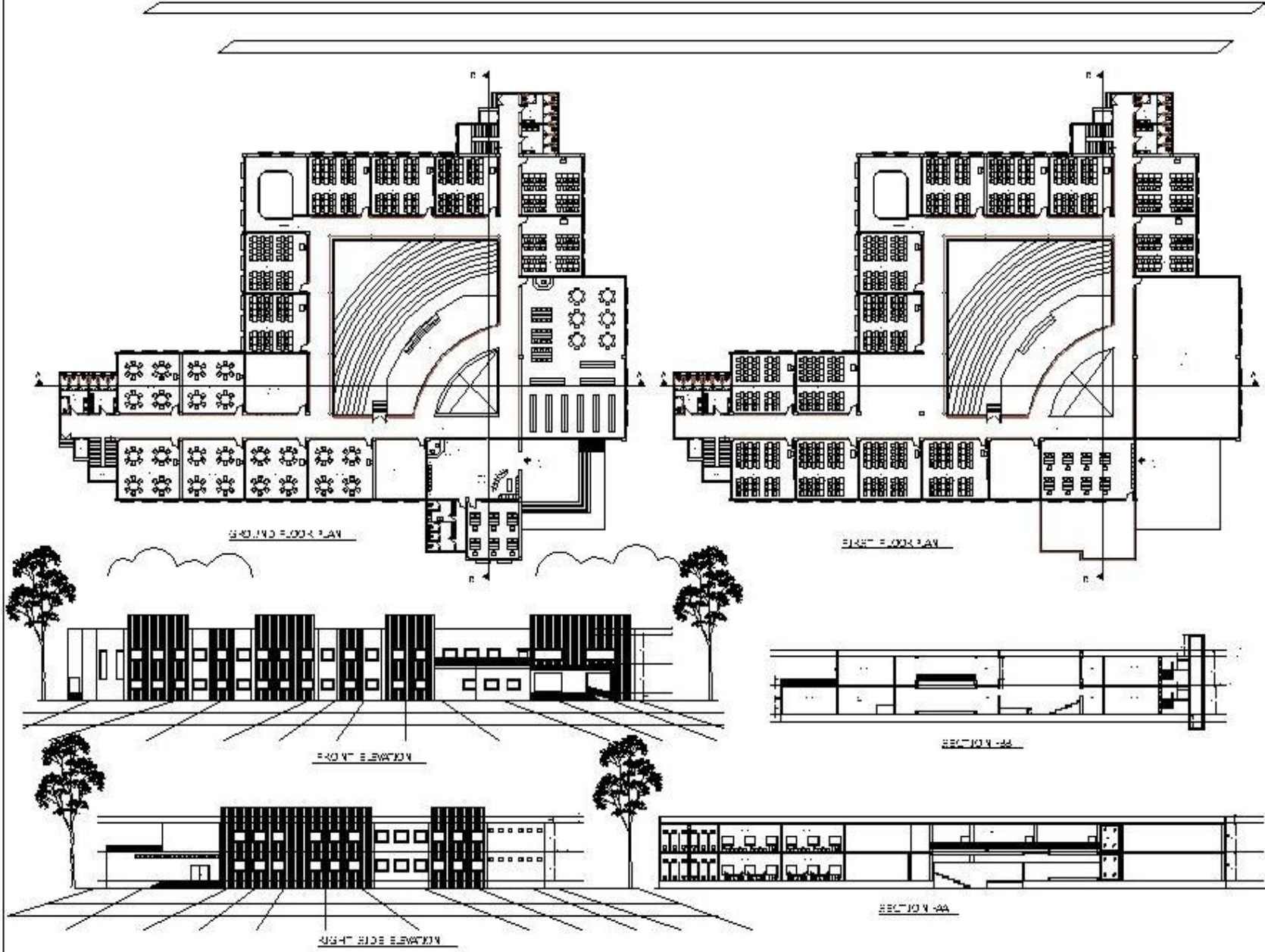
SHEET NO

REHABILITATION CENTRE FOR MENTALLY CHALLENGED

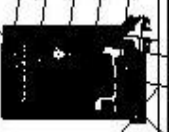
THESES
2011



ABHAY SINGH BHATI
B.ARCH AR-06-001
FINAL YEAR
M.L.T.S GWALIOR



KEY PLAN



AREA STATEMENT

SHEET NAME
SCHOOL BLOCK
FLOORPLAN
ELEVATIONS
SECTIONS

DIRECTION



SCALE
1:250

ALL DIM ARE
IN METRES

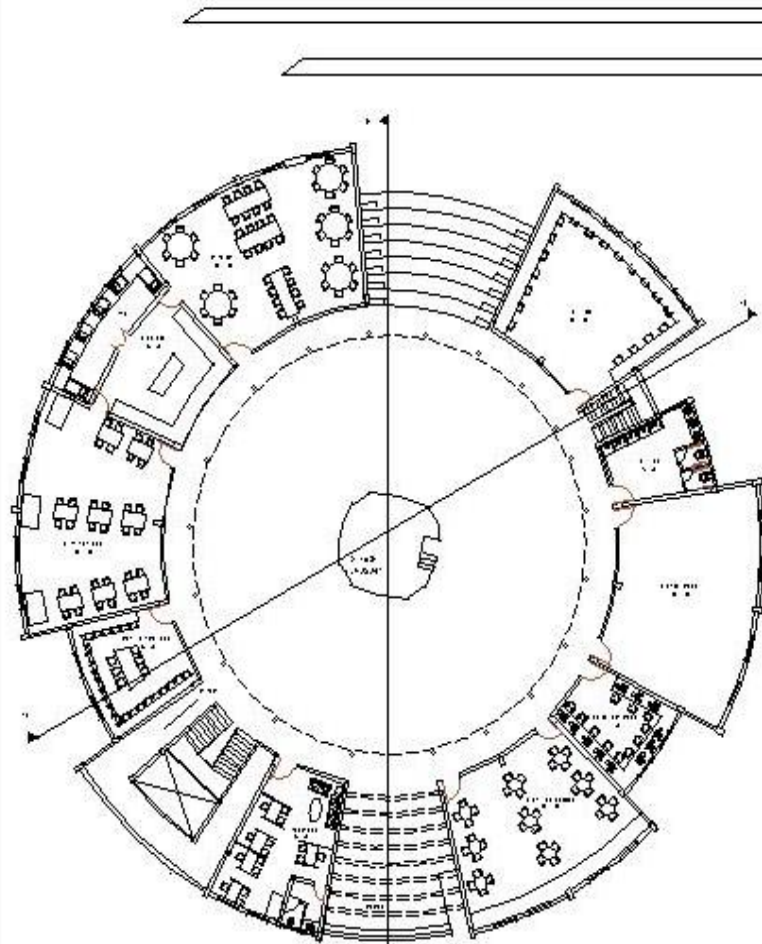
SHEET NO

REHABILITATION CENTRE FOR MENTALLY CHALLENGED

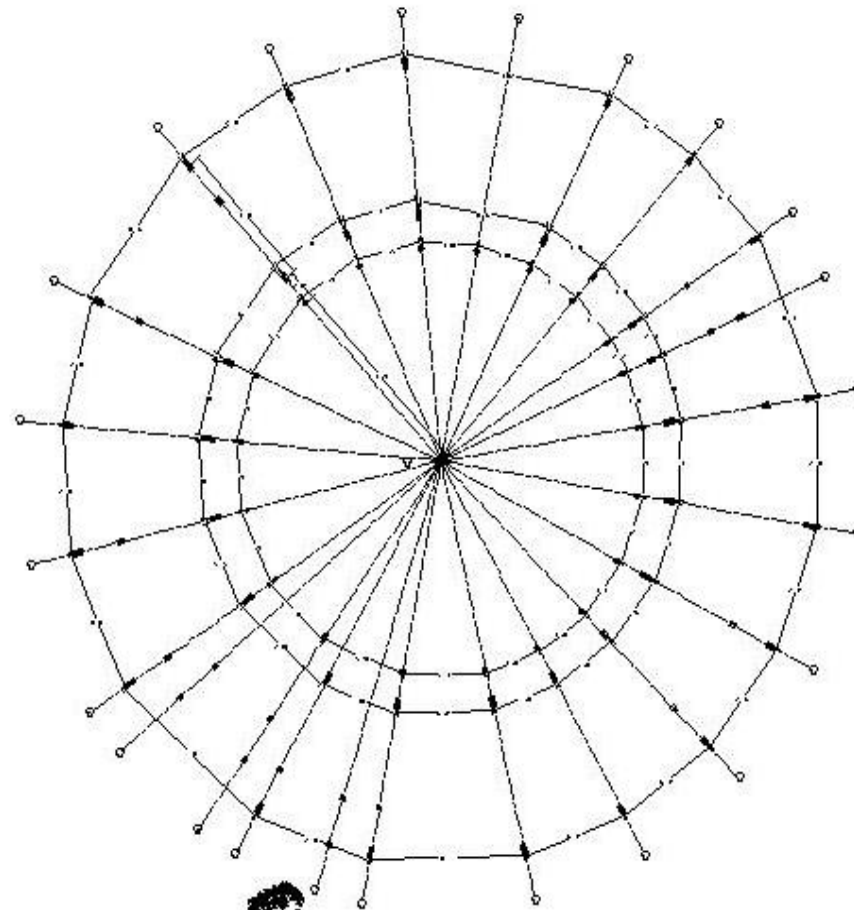
THE 515
2011



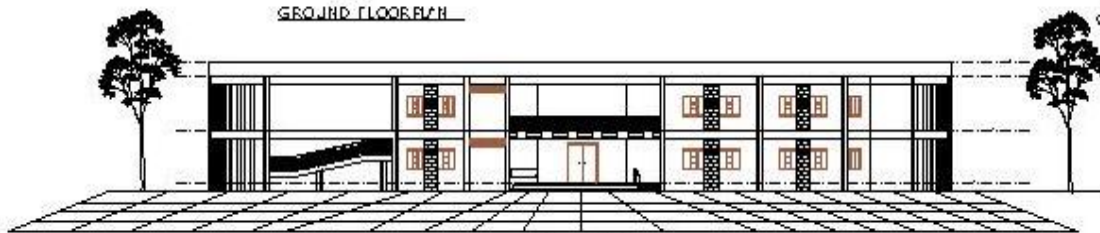
ABHAY SINGH BHATI
B.Arch AR-06-001
FINAL YEAR
M.I.T.S GWALIOR



GROUND FLOOR P/L



GRID P/L



ELEVATION

KEY PLAN



AREA STATEMENT

SHEET NAME
VOCATIONAL BLOCK

FLOOR PLAN
ELEVATIONS

DIRECTION



SCALE
1:150

ALL DIM. ARE
IN METRES

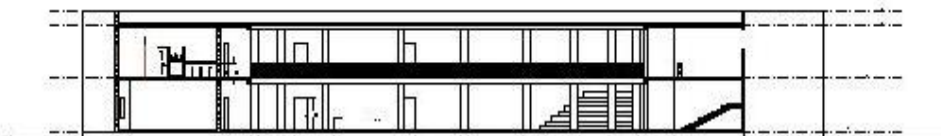
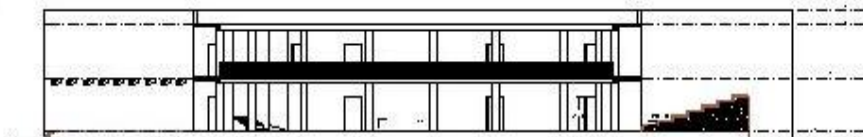
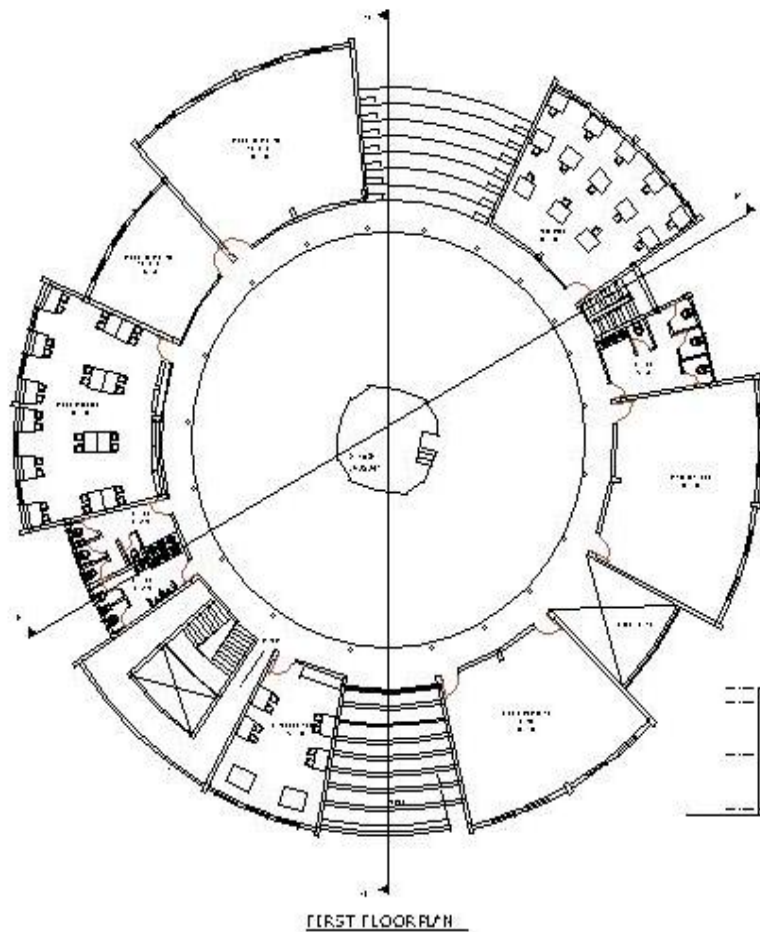
SHEET NO

REHABILITATION CENTRE FOR MENTALLY CHALLENGED

THESES
2011



ABHAY SINGH BHATI
B.Arch AR-06-001
FINAL YEAR
M.T.S GWALIOR



KEY PLAN



AREA STATEMENT

SHEET NAME
VOCATIONAL BLOCK

FLOORPLAN
SECTIONS

DIRECTION



SCALE
1:150

ALL DIM ARE
IN METRES

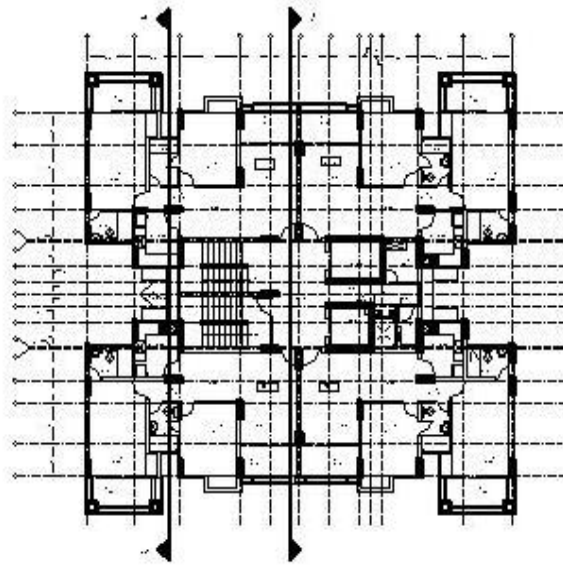
SHEET NO

REHABILITATION CENTRE FOR MENTALLY CHALLENGED

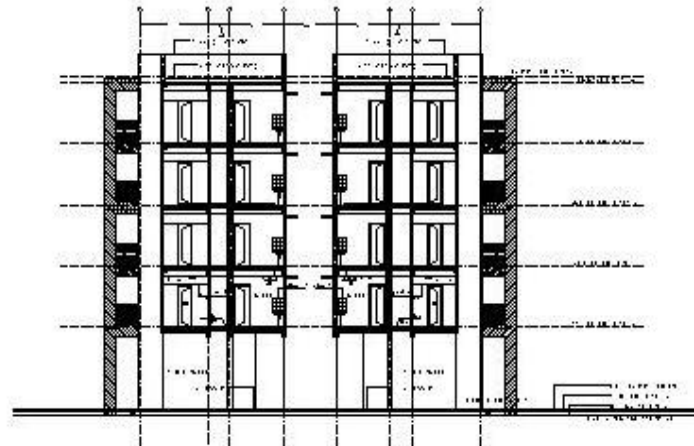
THESES
2011



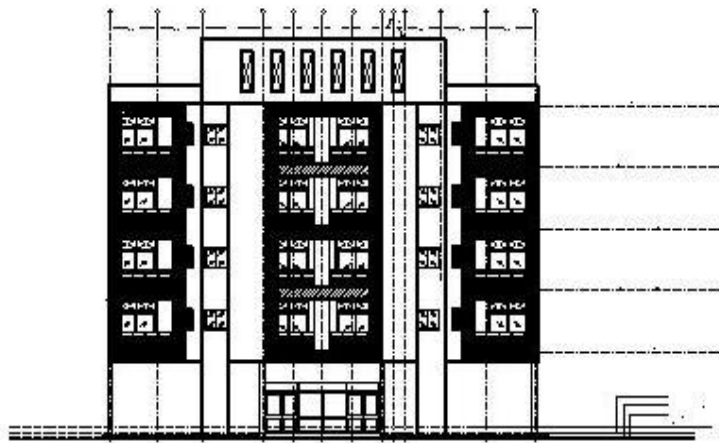
ABHAY SINGH BHATI
B.Arch AR-06-001
FINAL YEAR
M.L.T.S GWALIOR



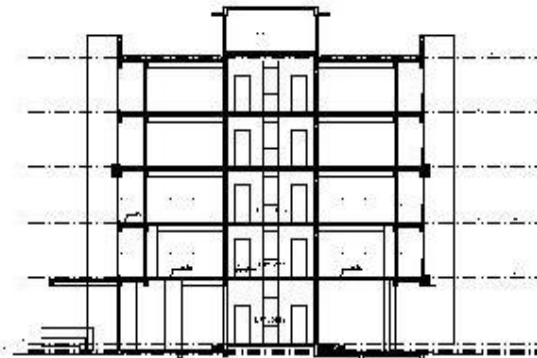
FLOOR PLAN



SECTION-AA'



FRONT ELEVATION



SECTION-BB'

KEY PLAN



AREA STATEMENT

SHEET NAME
RESIDENTIAL BLOCK
FLOOR PLAN
ELEVATION
SECTION

DIRECTION



SCALE
1:120

ALL DIM ARE
IN METRES

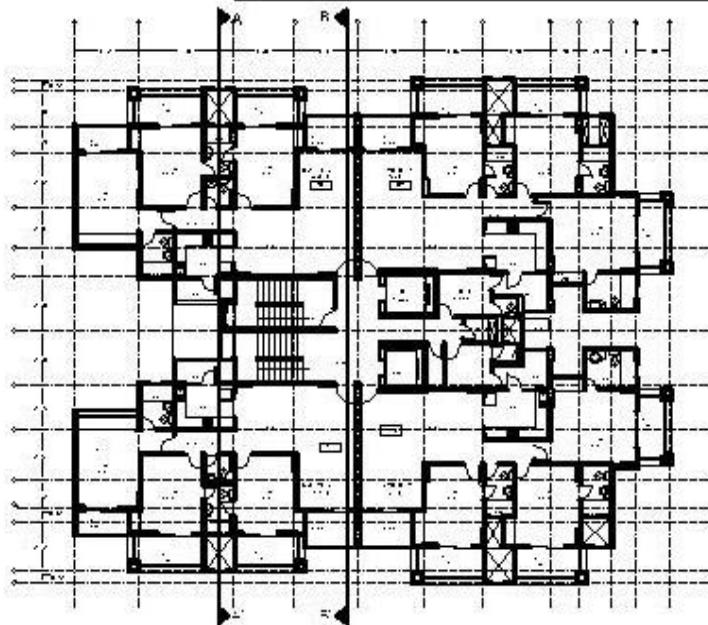
SHEET NO

REHABILITATION CENTRE FOR MENTALLY CHALLENGED

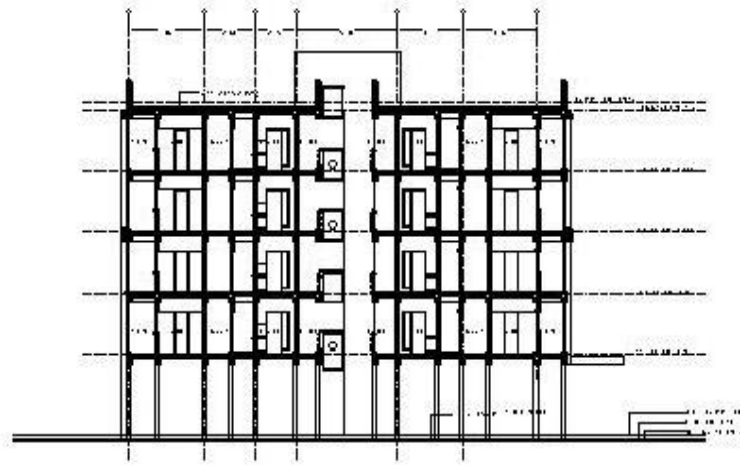
THE 515
2011



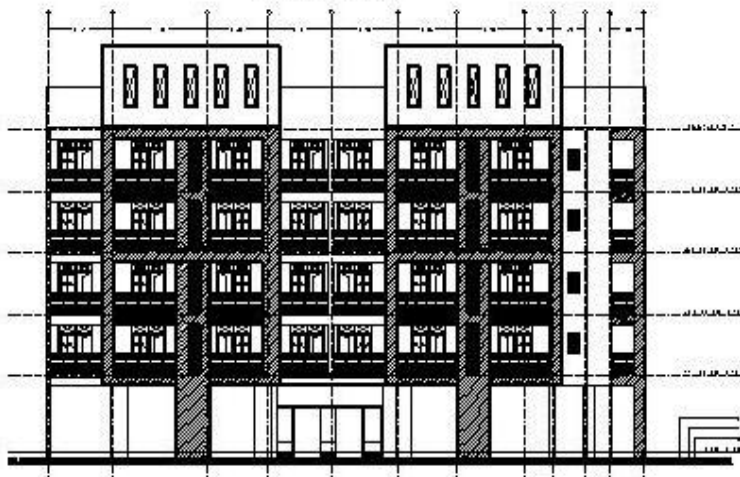
ABHAY SINGH BHATI
B.Arch AR-06-001
FINAL YEAR
M.T.S GWALIOR



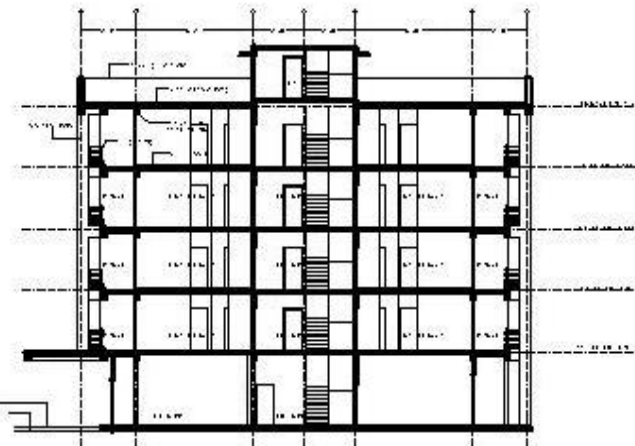
FLOOR PLAN



SECTION -AA'



FRONT ELEVATION



SECTION -BB'

KEY PLAN



AREA STATEMENT

SHEET NAME
RESIDENTIAL BLOCK
FLOOR PLAN
ELEVATION
SECTION

DIRECTION



SCALE
1:120

ALL DIM ARE
IN METRES

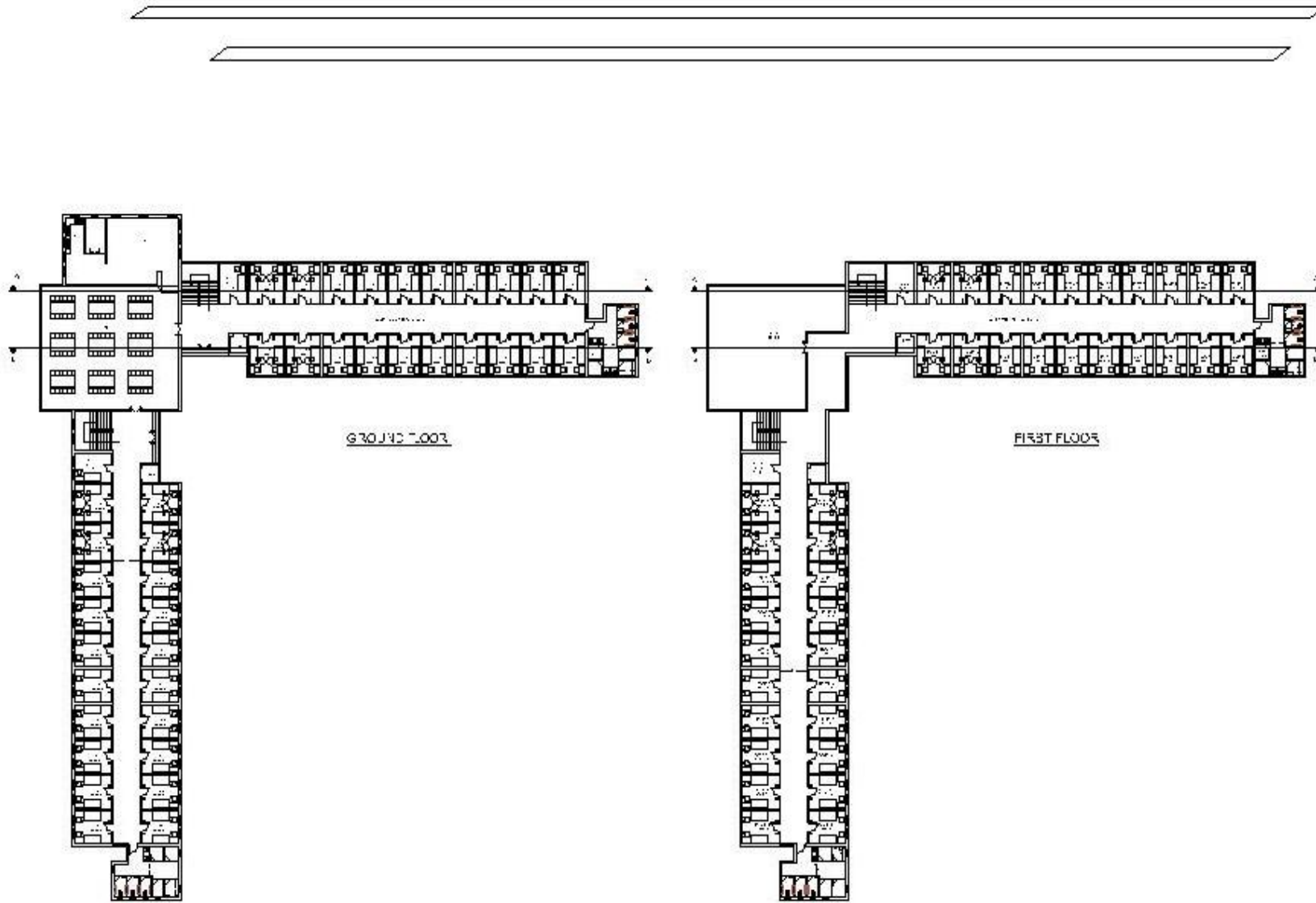
SHEET NO

REHABILITATION CENTRE FOR MENTALLY CHALLENGED

THE 515
2011



ABHAY SINGH BHATI
B.Arch AR-06-001
FINAL YEAR
M.I.T.S GWALIOR



KEY PLAN



AREA STATEMENT

SHEET NAME

HOSTEL BLOCK

SECTIONS

DIRECTION



SCALE

1:500

ALL DIM ARE
IN METRES

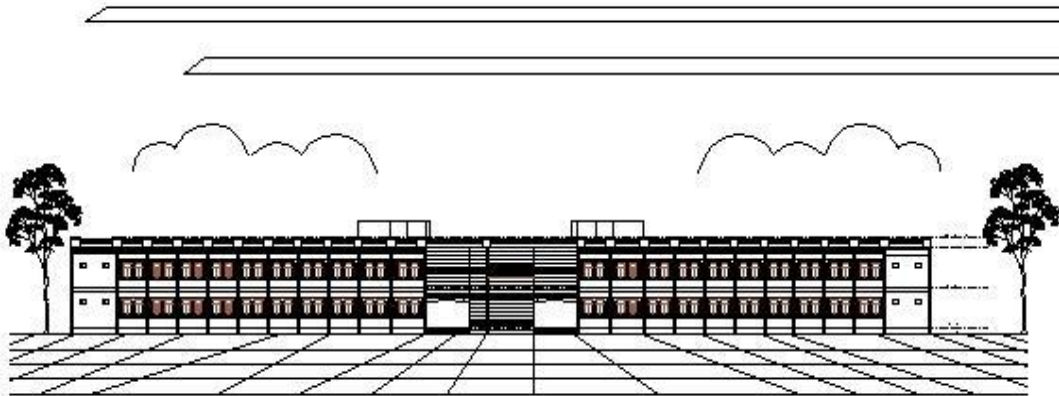
SHEET NO

REHABILITATION CENTRE FOR MENTALLY CHALLENGED

THESES
2011



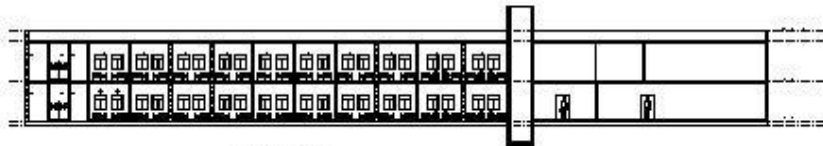
ABHAY SINGH BHATI
B.Arch AR-06001
FINAL YEAR
M.T.S GWALIOR



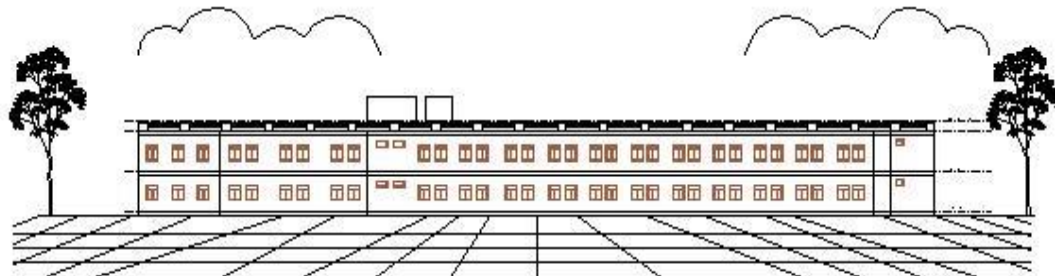
FRONT ELEVATION



SECTION XX



SECTION YY



REAR ELEVATION

KEY PLAN



AREA STATEMENT

SHEET NAME

HOSTEL BLOCK
ELEVATION
SECTION

DIRECTION



SCALE
1:200

ALL DIM. ARE
IN METRES

SHEET NO

REHABILITATION CENTRE FOR MENTALLY CHALLENGED

THESES
2011



ABHAY SINGH BHATI
B.A.RCH AR-0609
FINAL YEAR
M.I.T.S GWALIOR



LANDSCAPING:
 Landscaping in the REHABILITATION FOR MENTALLY CHALLENGED, plays a very important role in Architecturally stimulating the senses of Specially Challenged people within the campus.
TOUCH : The sense of touch is accentuated, in the forms of, different paving having unique texture for a particular path, leading to a particular destination. Murals, with information in Braille, location plans would be installed at required places in the sense garden. Plants, Shrubs of unique texture and shapes are planted so as to help a visually challenged person enjoy the nature along with knowledge.
SMELL: Plants having flowers of unique smells are grown at different corners of the site, many useful herbs are also planted. Smell of earth and water is an evergreen soothing and relaxing smell. **HEAR:** Wind chimes are used in various ways in order to produce different sounds. A huge wind chime on a water body is placed at the centre of the site, which acts as a refreshing bench mark on the site.
VISION : Aesthetically pleasing built form combined with strategically designed landscape results into an environment Special People Friendly.

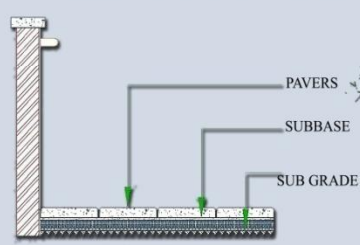
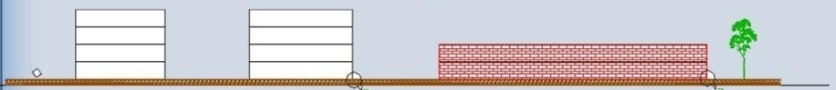
- LANDSCAPING FEATURES**
1. PERGOLA
 2. STAGE SURROUNDED WITH SHRUBS
 3. TYPES OF MATERIALS
 4. COLCURES USED
 5. SCULPTURES USED
 6. PERGOLA



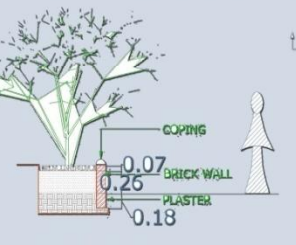
A GARDEN WHICH EVOKES THE SENSES NAMELY "REFERRED AS A SENSE GREEN CAN BE CREATED. THIS GARDEN WILL HAVE SIT OUT OR SEATING SPACES WITH ALIGNMENT OF CERTAIN SHRUBS WHICH HAVE TYPICAL SCENT IN THEM. e.g. CHAMPA OR FRANGIPANI MINT PLANT ROSE PLANT.

A CERTAIN AREA SHOULD BE CREATED OUTSIDE WITH SEMI-COVERED OPENINGS THIS SPACE WILL BE CHARACTERIZED BY CERTAIN STRIKING FEATURES SUCH AS HANGING WIND CHAINS OR SOME WATER ELEMENT

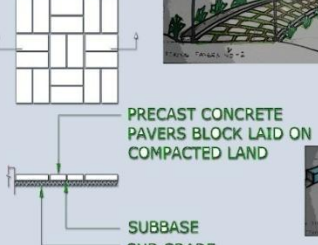
A WATER FOUNTAIN IN THE MIDDLE FOR THE COOLNESS AND EXCLUSIVELY FOR THE SOUND CREATED BY GUSHING WATER.



DETAIL "A"

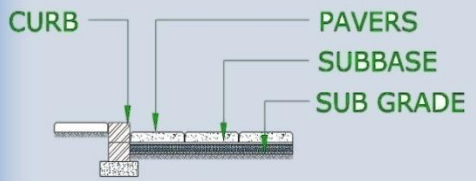


DETAIL -C

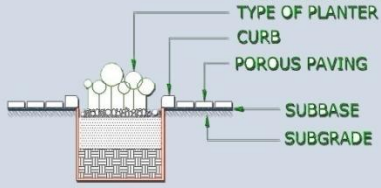


PRECAST CONCRETE PAVERS BLOCK LAID ON COMPACTED LAND

SUBBASE SUB GRADE



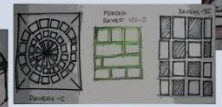
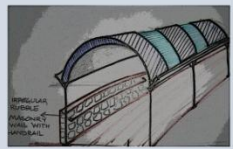
DETAIL -B



DETAIL -D

PATHWAYS DETAIL

- SCENTED FLOWER/ ANY TYPE OF PLANTER
- CURB
- POROUS PAVING



PLANTING PLAN

- TREES:-
1. KANCHAN(BAHUNA VERIGATION)
 2. BOTTLE BRUSH (CALISTMON LAKOSLATUS)
 3. NILI GILMOHAR (DELONIX REGIA)
 4. GOLDEN TABERUIA (TABERUIA ARJENSIA)
 5. NEEM (AZADIRACHTA INDICA)
 6. DWARB WHITE PLUMERIA (PLUMERIA ABTUSA)
 7. DRPPING ASHOKA(POLYALTHIA LONGIFOLIA)
- PLANS:-
1. PARLOUR PLAM (CHAMAEDORIA ELEGANS)
 2. ARECA PLAM (CHRYA LIDOCARPUS LUTESUS)
 3. SAGO PLAM (CYCAS REVOLUTA)
 4. TABLE PLAM (LIVISTONA CHINENSIS)
- CREEPERS:-
1. VIRGINIA CREEPER (PARHENOCISSUS QUINQUEFOLIA)
 2. BUNZERABAD CREEPER (THUNBERGIA MYSORENSIS)
 3. MALOO CREEPER (BHUHINIA VAHLI)
 4. SKY BLUE CLUSTERVINE (PENTANTA)
- HERB :-
1. KASTURI (SPINY BOTTLE BRUSH)
 2. NERVE PLANT (FITTONIA ALBIVIENS)
 3. BLUE FOX TAIL (ECBOLM LUM LINNEANUM)
 4. CHEEKUMARI (ALOE VERA)
 5. HIMALIYAN SCAPE FLOWER
- SHRUBS:-
1. GOLDEN DURANTA (DURANTA REPEN)
 2. PINK LANTANA (LANTANA CAMERA PINK)
 3. RED ACALYPH (ACALIPHA GODETTIANA)
 4. MORPANKHI (THUGA ORIENTALIS)
 5. COOTON VARIETY (CROTON VARIETY)

KEY PLAN



AREA STATEMENT

SHEET NAME

LANDSCAPE DETAIL

DIRECTION



SCALE

1:600

ALL DIM ARE IN METRES

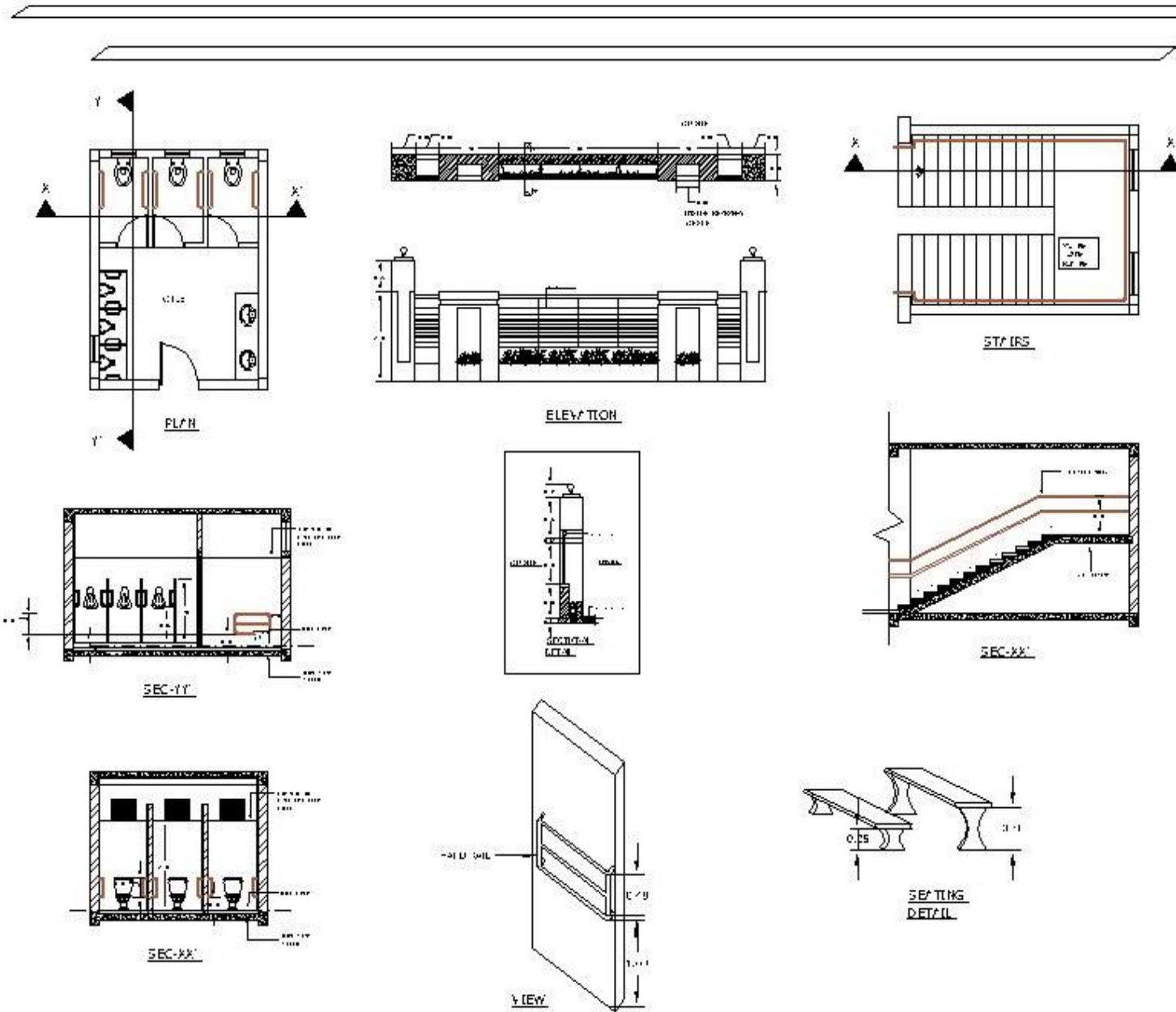
SHEET NO

REHABILITATION CENTRE FOR MENTALLY CHALLENGED

THESES
2011



ABHAY SINCH BHATI
B.Arch AR-0600
FINAL YEAR
M.L.T.S GWALIOR



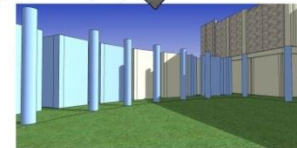
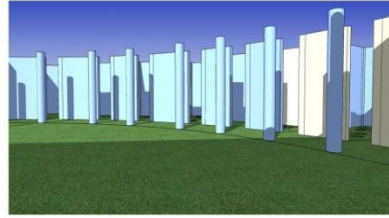
AREA STATEMENT
SHEET NAME
CONCEPT
DIRECTION
SCALE
ALL DIM ARE IN METRES
SHEET NO

REHABILITATION CENTRE FOR MENTALLY CHALLENGED

THESES
2011



ABHAY SINGH BHATI
B.Arch AR-06001
FINAL YEAR
M.T.S GWALIOR



KEY PLAN



AREA STATEMENT

SHEET NAME

VIEWS SHEET

DIRECTION



SCALE

ALL DIM. ARE
IN METRES

SHEET NO

REHABILITATION CENTRE FOR MENTALLY CHALLENGED

THESIS
2011



ABHAY SINGH BHATI
B.ARCH AR-06001
FINAL YEAR
M.I.T.S GWALIOR