



F. Donald Blake RI, RSMA (1908 - 1997)

E. Donald Blake RI, RSMA (1908 - 1997)

Don was born in Greenock, Scotland in 1908. His family moved to London when he was a child and he remained in the South for the rest of his life. He trained at Camberwell School of Art and at fifteen years of age started work as an architectural draughtsman in the interior design business.

Early in 1940 he was drafted into a small group of war artists producing propaganda work for the Ministry of Information and for three evenings a week worked for the Daily Express drawing war maps and impressions of battles. On the other nights he worked long hours as an Air Raid Fire Officer. During this period he began to exhibit his paintings. He had work shown at the Royal Academy together with other Open Exhibitions in London.

As a freelance designer after the war, he worked for the aircraft industry, the railways and on road safety campaigns to mention but a few. But it was his painting that always took first place. By the early 1960s he had earned himself a considerable reputation as an artist.

After much experimentation he had perfected the use of a clay-coated paper, which freed him from many of the limitations inherent in the medium of watercolour. Having finished the painting he applied a coat of varnish which brought another depth and dimension to his work. But it wasn't just his technique that was unique, it was the style and quality of his work that attracted so much praise and admiration.

Don also worked in oil with the same flair. Nothing escaped his notice or his wit. Whether he was painting a

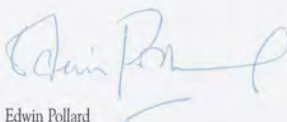
muddy foreshore with rusting cranes, the wilds of the Cornish Moors, people, deckchairs blowing in the breeze, market scenes, his beloved Tuscany, delicate flower studies, buildings or bric-a-brac, the viewer was always drawn to the painting.

He was elected a member of the RI, the RSMA, the Chelsea Arts Club, the Wapping Group of Artists and the London Sketch Club serving on the councils of all these societies. His work can be found in the Dictionary of English Marine Painters.

His work has been shown in Los Angeles, San Francisco, Chicago, Dusseldorf and Brussels as well as a number of noted galleries in London.

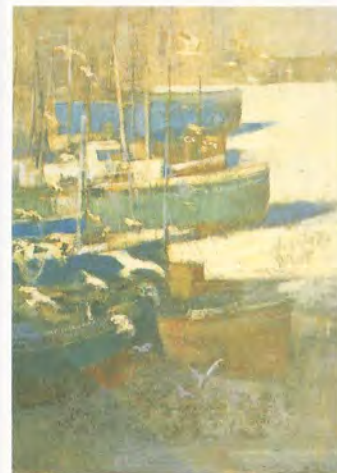
It is with great pride that Lincoln Joyce hosts this exhibition of works from his studio, with the kind permission of his family.

I had known Don for some thirteen years at the end of his life but had been aware of his work since the early 1960s. I personally own eight of his pictures which give me the greatest joy and will always do so, having a timeless quality about them that is witness to the great talent that was Donald Blake.


Edwin Pollard

Top Left: 'Sketching, St. Ives'
Top Right: 'St. Ives'
Bottom: 'Night Market'
Front Cover: 'Sunny Afternoon'

Oil 20 x 14ins
Oil 24 x 18ins
Oil 12 x 16ins
Watercolour 18 x 27ins



Works from the Studio of F. Donald Blake RI, RSM (1908 - 1997)



'Farm in Winter'

Watercolour 14 x 19ins

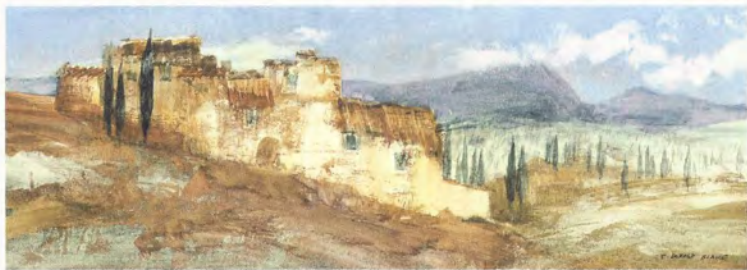


'Tuscan Village'

Watercolour 14 x 19ins

'St Mary's, The Strand'

Watercolour 23 x 13ins



'Tuscan Hills'

Watercolour 6 x 18ins



'Dances through the Autumn Woods'

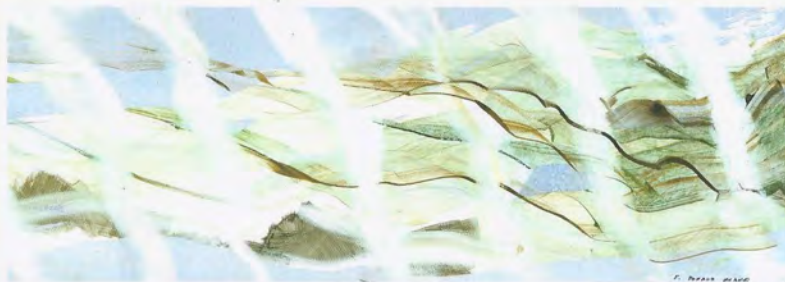
Watercolour 6 x 18ins

Please Note

Paintings illustrated may be purchased outright on receipt of the brochure. There will be over 80 works for sale, prices start at £200.

LINCOLN JOYCE

FINE ART



'Flowing Water'
Watercolour 7 x 18ins



'Flight'

Watercolour 14 x 18ins



'Breakfast'

Watercolour 14 x 19ins



40 CHURCH ROAD GREAT BOOKHAM SURREY KT23 3PW ENGLAND TELEPHONE & FAX 01372 458481
GALLERY HOURS TUESDAY - SATURDAY 10AM TO 5PM
www.artgalleries.uk.com