

## WIRING DIAGRAMS

Address:

Owner:

Contractor:

Designer:

Director:

# CONTENT

Main page.....	1
Content.....	2
Specifications.....	3
Building plant.....	4
Introduction device.....	5
Main panel.....	6
Circuits on building plant.....	7
Fuse box in living house.....	8
Equipotential bonding.....	9
Earthing.....	10
Short circuits (fire safety).....	11
Materials.....	12

# SPECIFICATIONS

## Technical conditions:

Introductionary cable: NYY 4G16

Main fuse: 3x40A

### Power supply:

voltage: Y+N 230/400V

type of current: ~3 AC

frequency: 50Hz

type of power system: 3-phase

### Ground:

- missing (voltage doesn't exceed 50V)
- TN-C
- TN-C-S
- TN-S
- T-T
- I-T
- M+ and M- with grounded tap

### Substation:

breaking current: min. 6kA

transformer: 0.042 ohm

## Installation properties:

Voltage drop: < 5%

cosφ: >0.86

### Wiring way:

- overhead powerline
- underground power cable
- cable shaft
- cables on wall surface
- cables inside the wall
- cables in cable tray
- other: \_\_\_\_\_

type of cabling: NYM and NYM-J

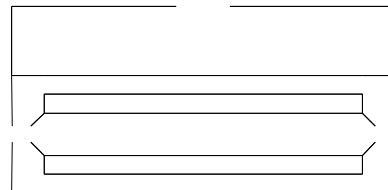
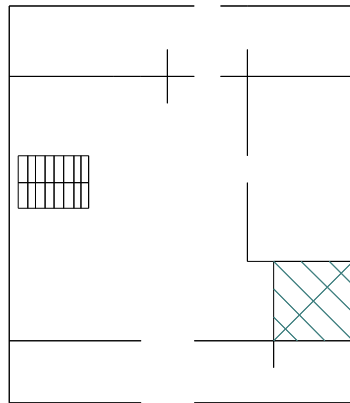
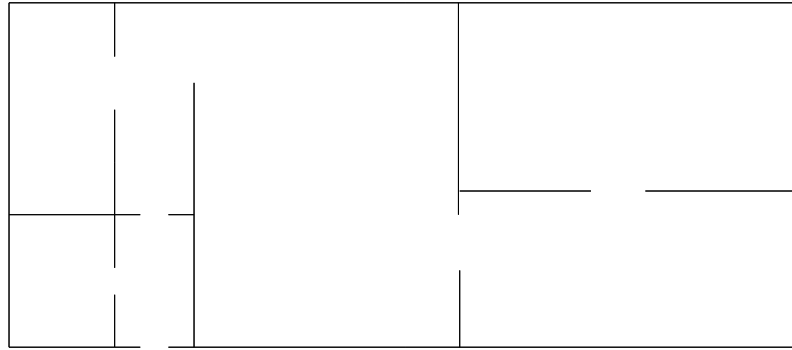
### Main panel:

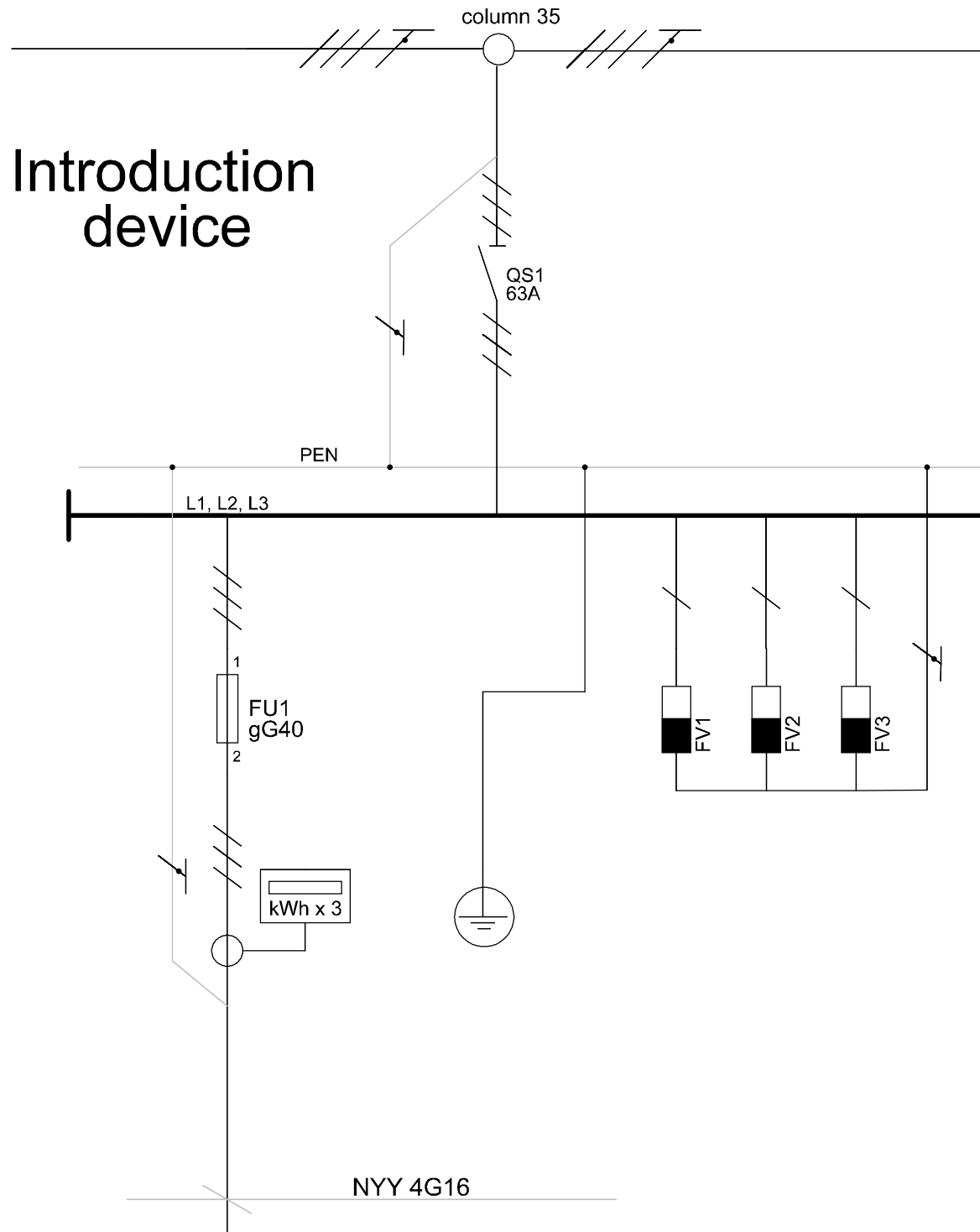
- wall surface
- inside the wall
- other: \_\_\_\_\_

Ingress Protection Rating: min. IP30

Ground impedance: 29,6

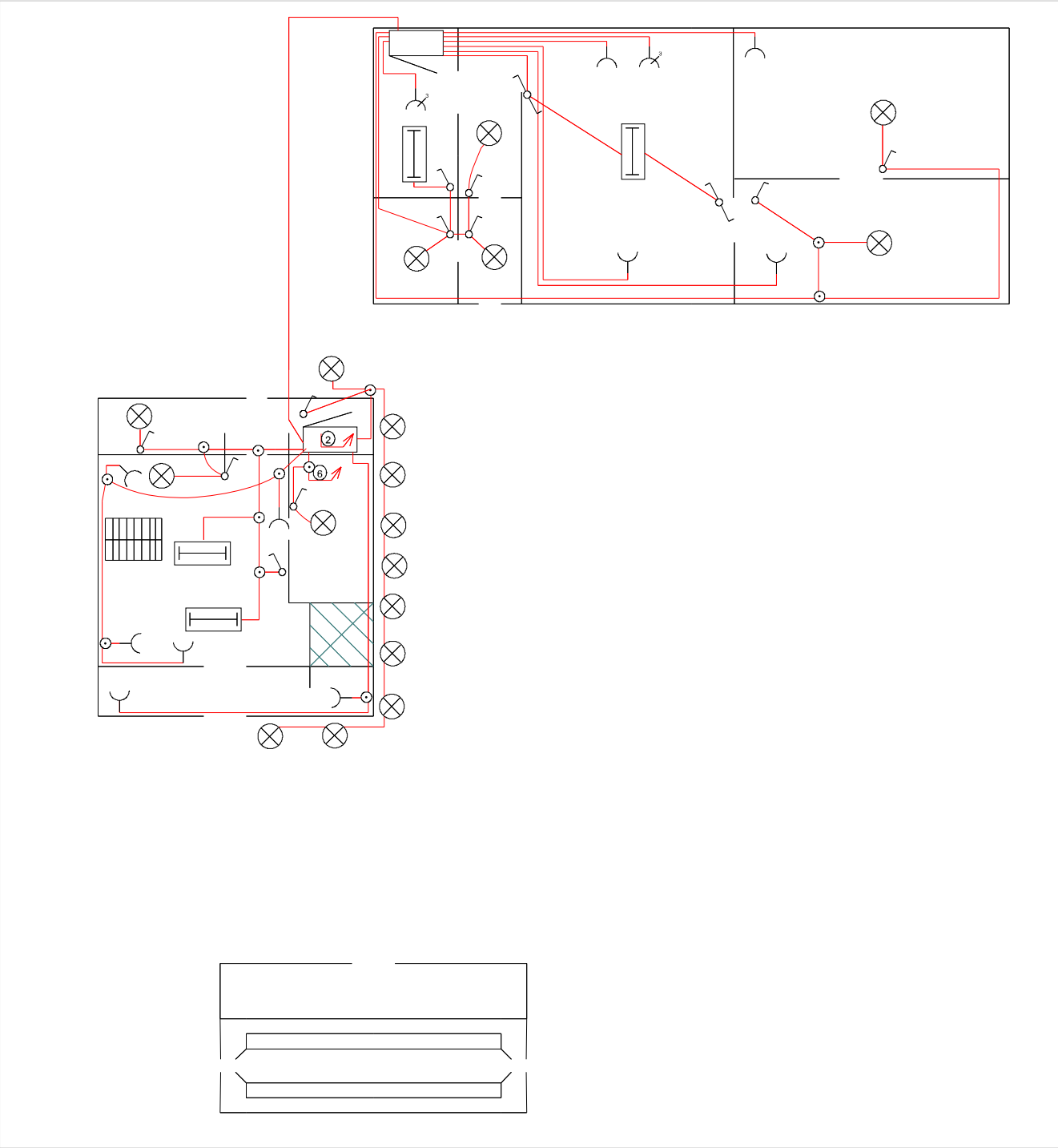
# BUILDING PLAN

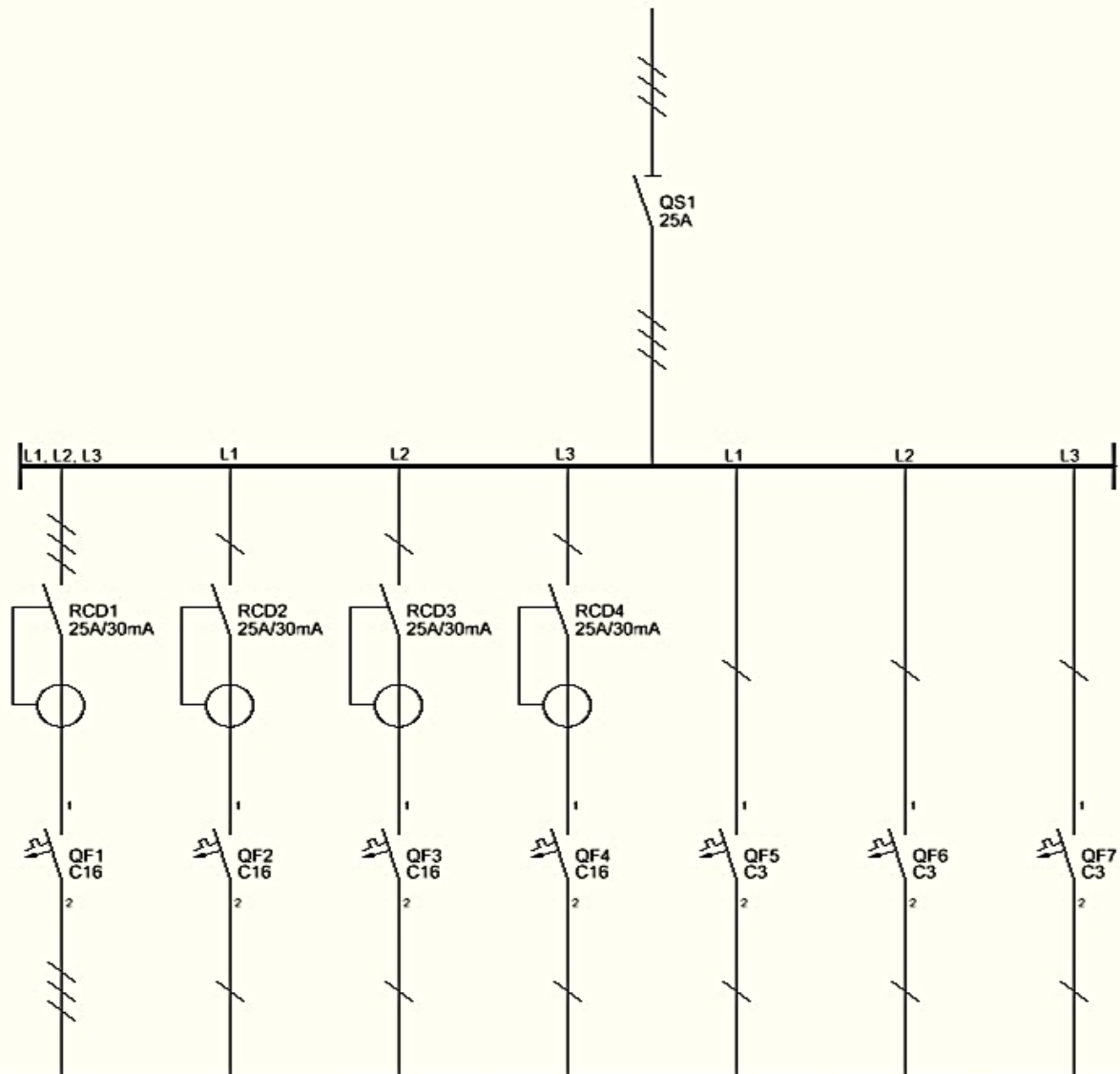


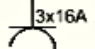
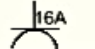
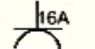
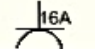







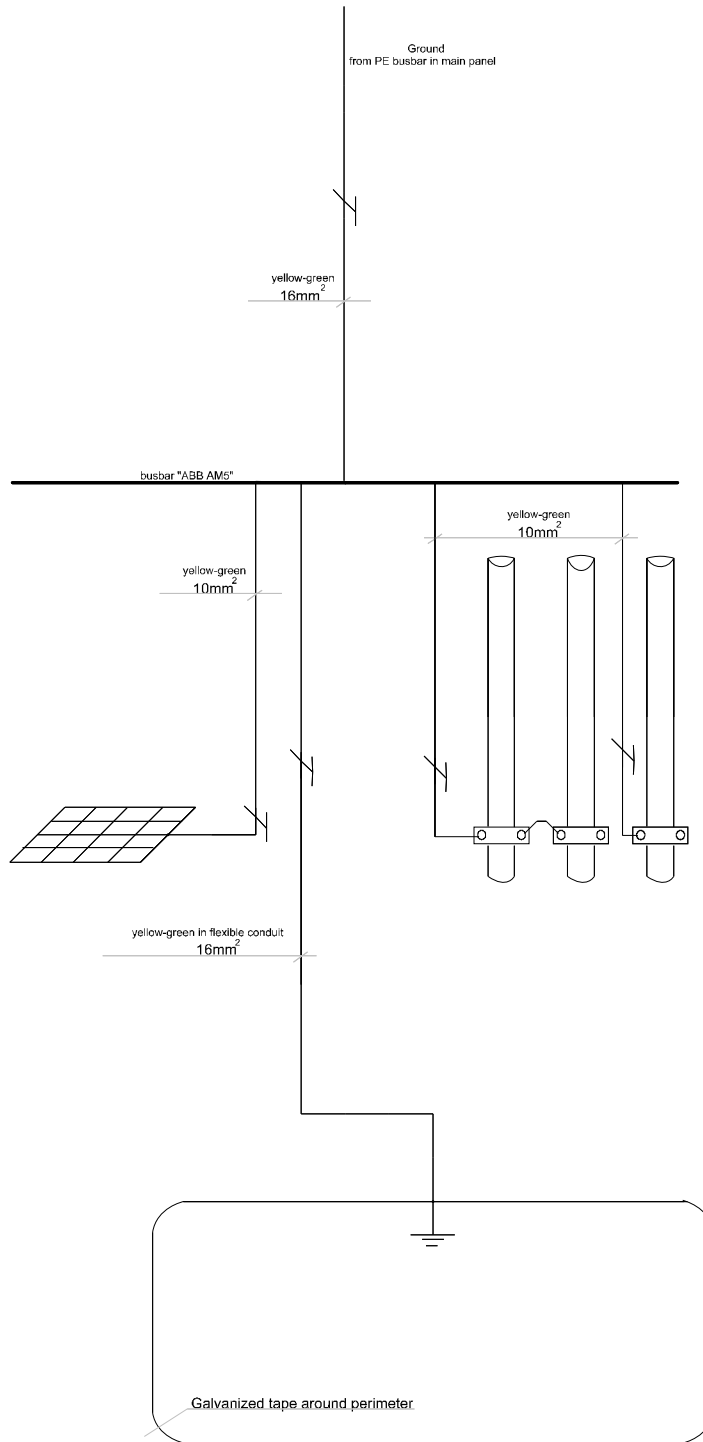
**CIRCUITS ON BUILDING PLANT**

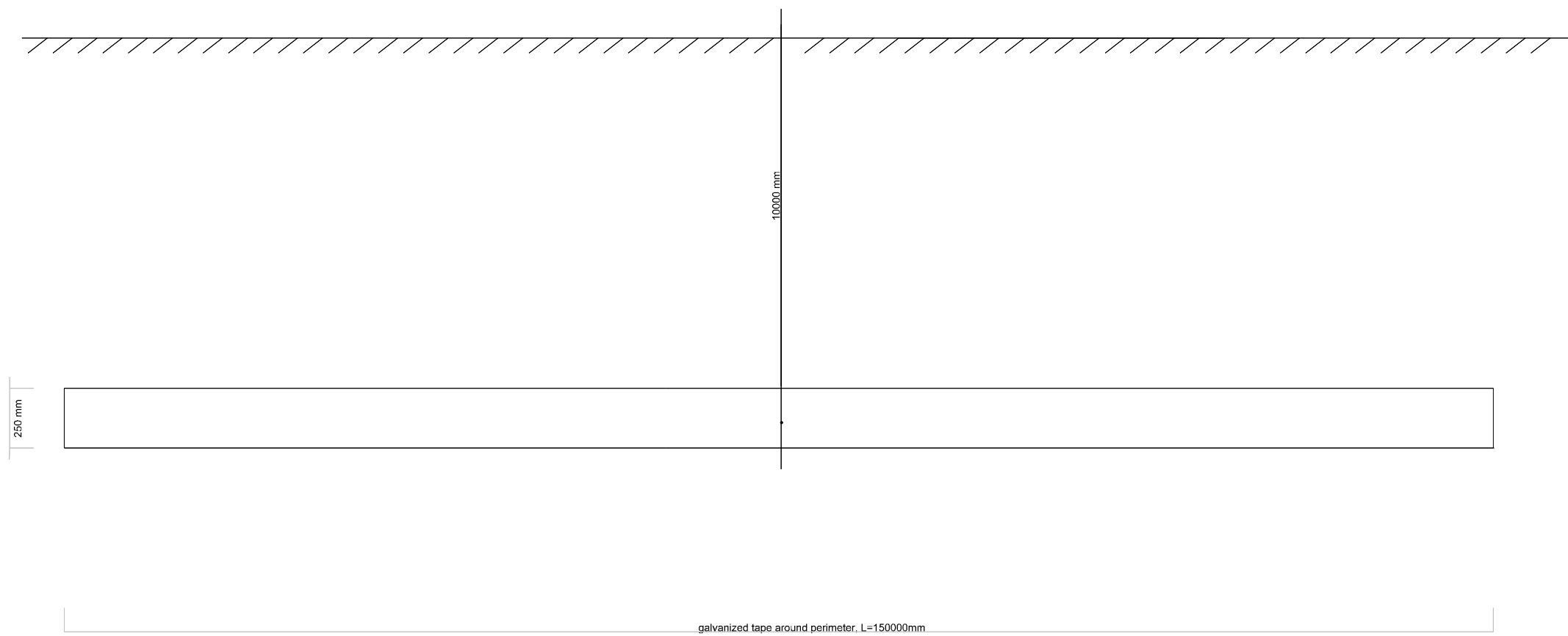




receptors	symbol								
	properties	number	1	2	3	4	5	6	7
		name	3-phase socket	sockets I	sockets II	sockets III	lamps I	lamps II	lamps III
		phase	L1, L2, L3	L1	L2	L3	L1	L2	L3
		cable (Cu)	5G2,5	3G2,5	3G2,5	3G2,5	3G1,5	3G1,5	3G1,5
		I(n)	3x16	16	16	16	3	3	3
		power	11000	3500	3500	3500	600	600	600





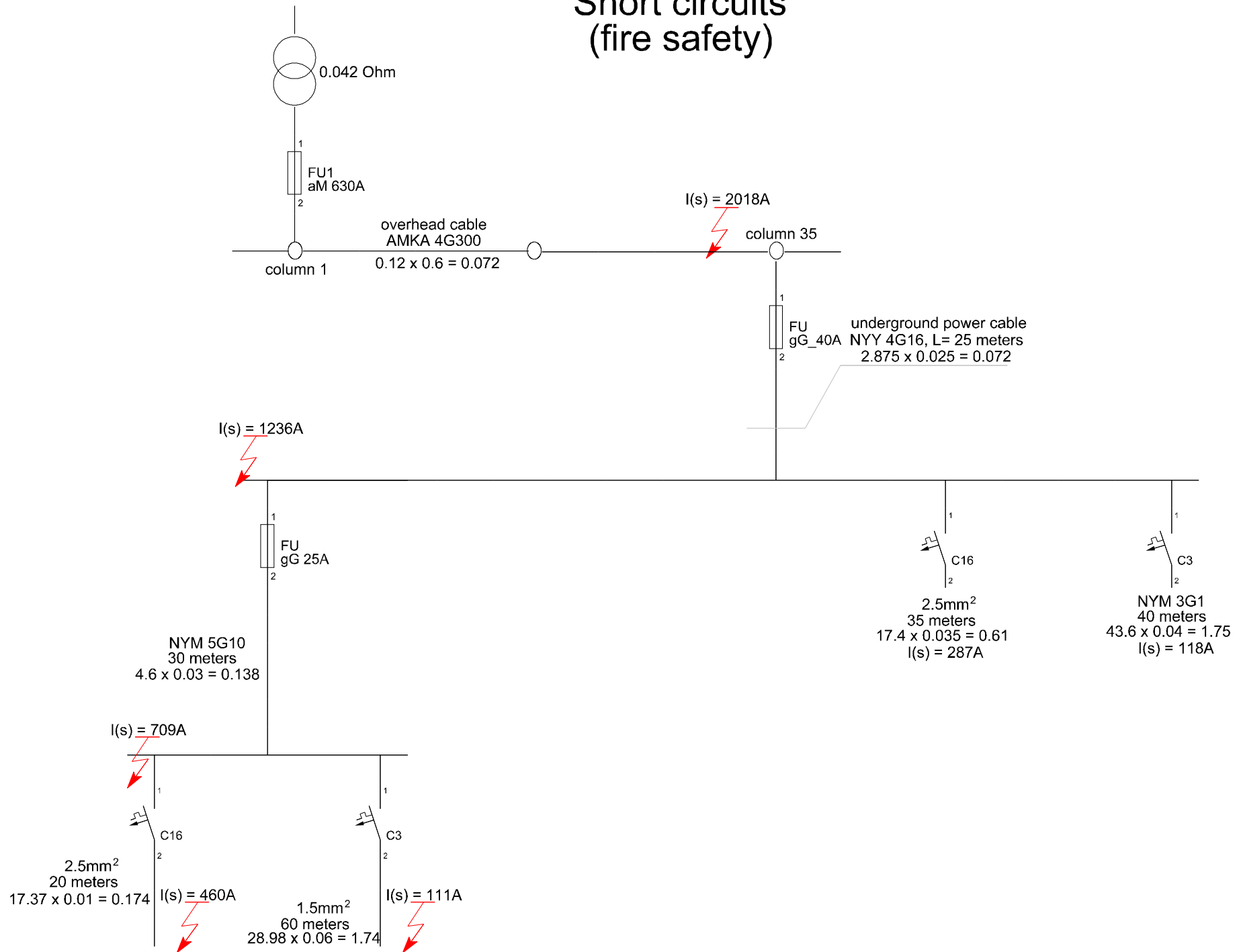


galvanized tape around perimeter. L=150000mm

Ground impedance:

$$R(\text{ground}) = \frac{0.366 \times p}{L} \times \lg \frac{2L}{D} = 6.72 \times 4.26 = 28.6$$

# Short circuits (fire safety)



# MATERIALS

Fuse box HEV 3021, metal	1
DIN rail	3 meters
Load switch 3x40A 415V	1
Load switch 3x25A 415V	1
Fuse disconnecter 10x38	1
MCB 3xC16	3
MCB 1xC16	7
MCB 1xC3	7
RCD 4P 25A/30mA	2
RCD 2P 25A/30mA	3
Busbar PE and N 38x6	1
Busbar FORK 16mm	24M
Terminals for DIN rail 6mm, with bridge	9
Busbar ABB AM5	1
Cable NYY 4G16	25 Meters
Cable NYM 5G10	40 Meters
Cable NYM 5G2.5	50 Meters
Cable NYM 3G2.5	200 Meters
Cable NYM 3G1.5	410 Meters
Copper wire yellow green 16mm	300 Meters
Copper wire, black, 6mm	10 Meters
Copper wire, black, 1.5mm	40 Meters
Copper wire, red, 1.5mm	40 Meters
Galvanized tape, 25cm	150 Meters
Coupling for earthing tape 25cm	1
Earthing collars, 10mm	15
Conduit flexible	* by installation process
Socket 3-phase 16A	3
Socket 1-phase 16A IP20	10
Socket 1-phase 16A IP44	25
Light switch IP20	10
Light switch IP44	5
Light switch 3-way	2
Lamps and light fixtures	*according to consumer's wishes
Other (nails, contacts)	1