

8962



HYMENOPTERA
 LINN. S. N. V. CLASS. V. ORD.
 BIENEN, WESPEN,
 UND
 AMEISEN.

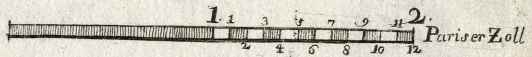
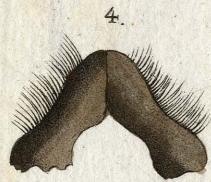
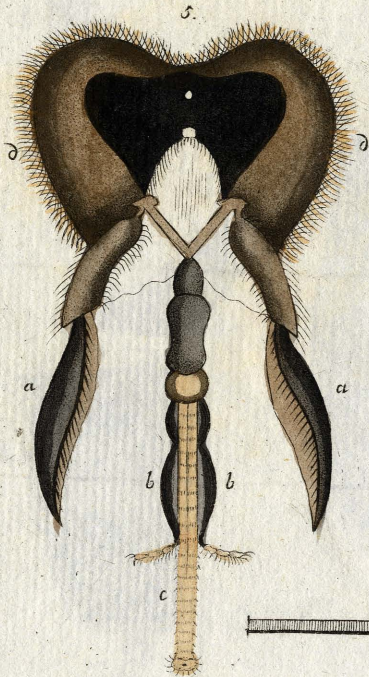
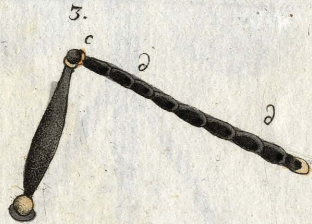
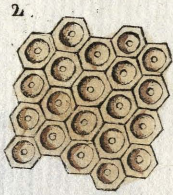
L. L. Christ, Del.

J. Müller, pinx. & Sculp. Hanov.

G. n. F.

Bibliothek
 des
 Kgl. Zoolog.
 Museums
 BERLIN

Fig. 1.





F. 1.



2.



4.



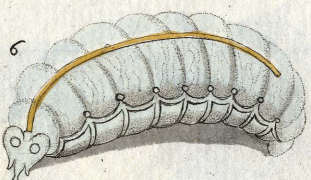
3.



7.



6.



5.



8.



9.



Fig. 1

Tab. IV.



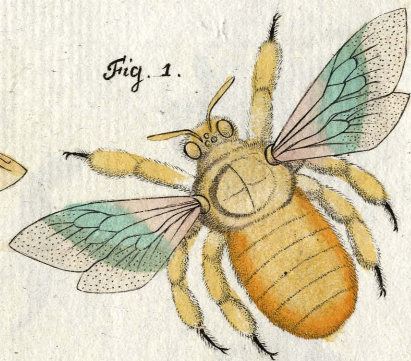
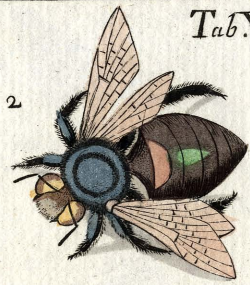


Fig. 1



2



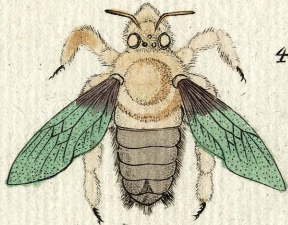
5



3



4



7



6



Fig. 1.



4.



2.



6.



5.



3.



Tab. VIII.

Fig. 1



2



3



4



5



6



7



8



9



Fig. 1.

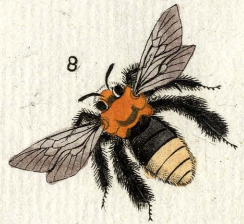
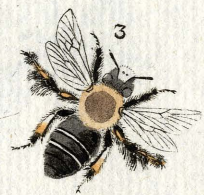


Fig. 1.





Tab. XII.





Tab. XIV.



Tab. XV.



1



2



3



4



5



6



8



7



9



10

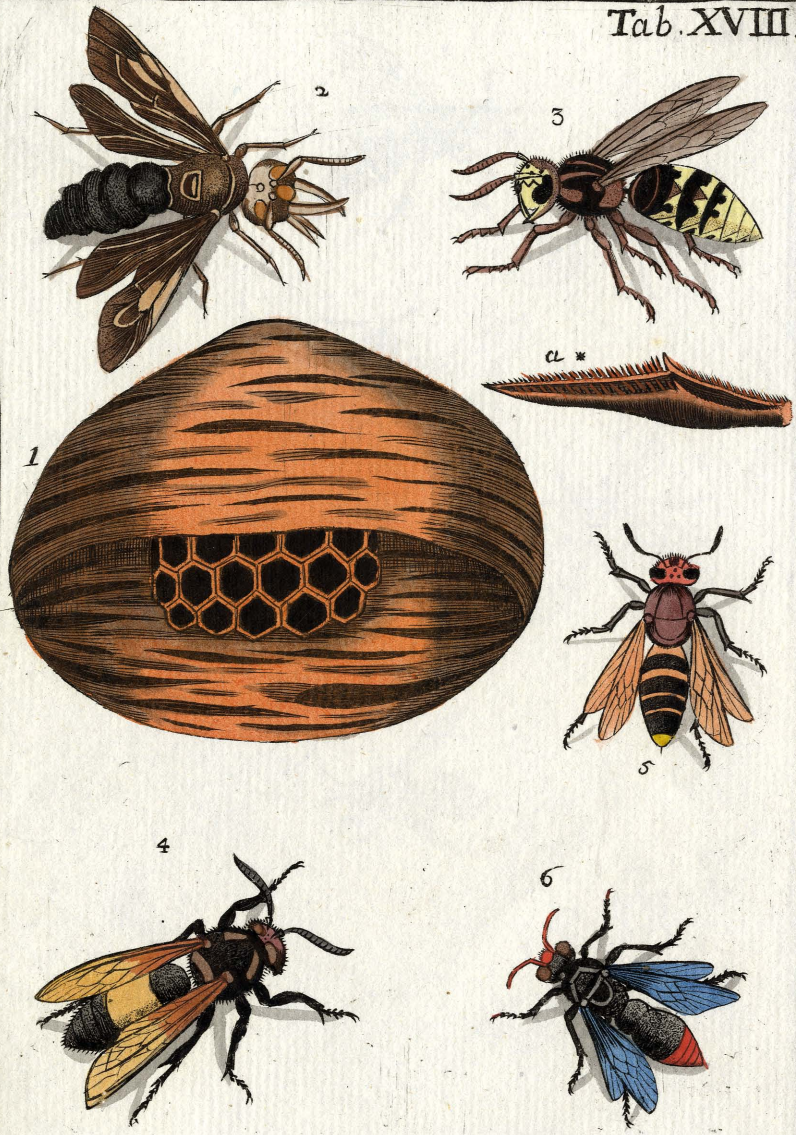


12



11

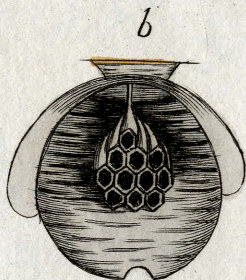
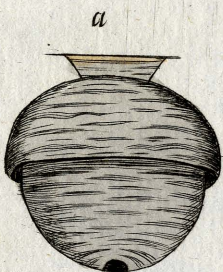








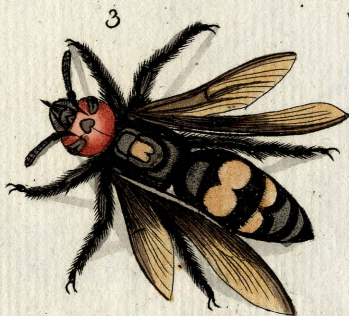


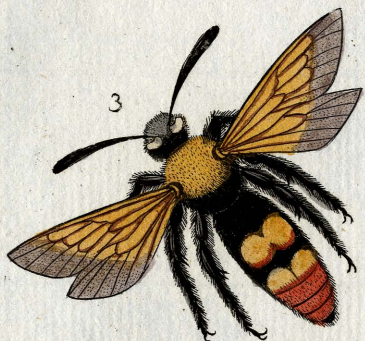


4

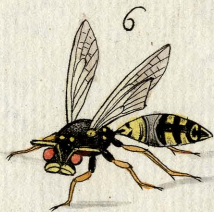


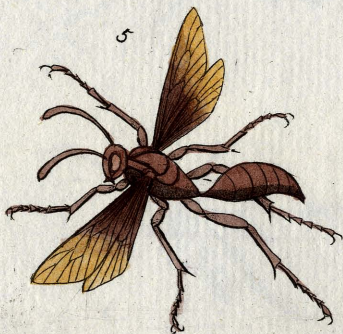
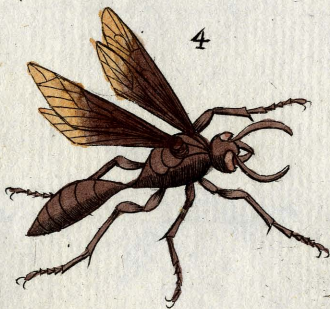






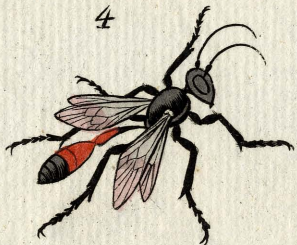


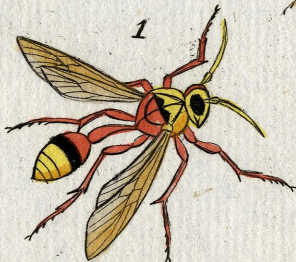


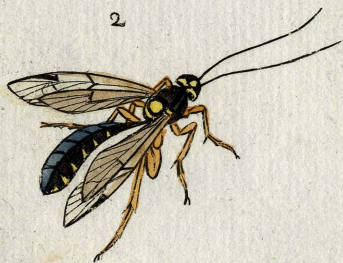
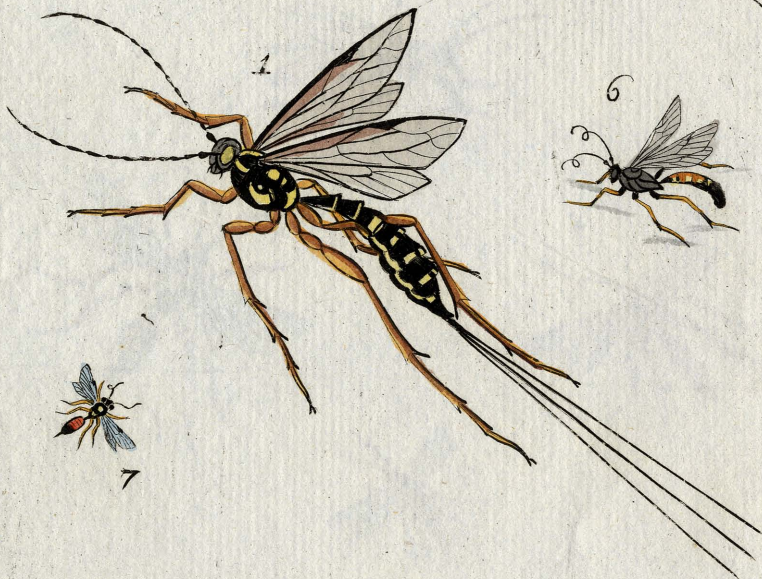










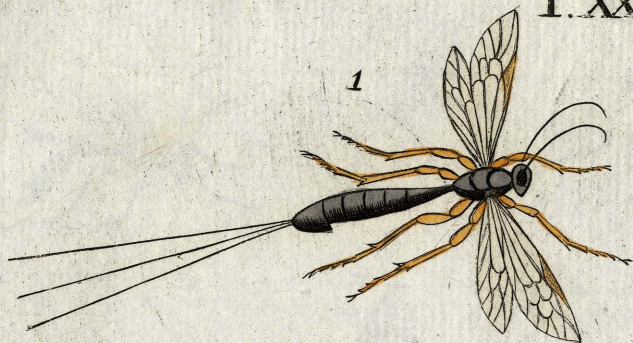


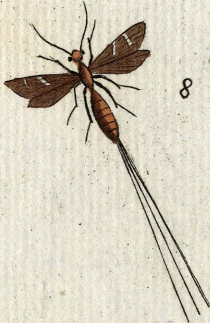




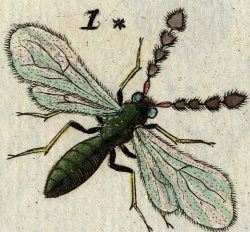








1



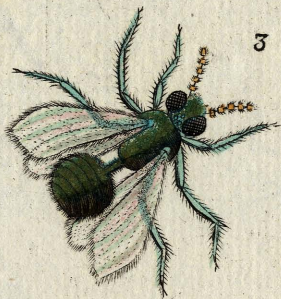
2



2 *



3 *



3



b

3

a

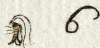


b *

a *







6*



7



3*



2*





3



2



9



7



8



11



12

10

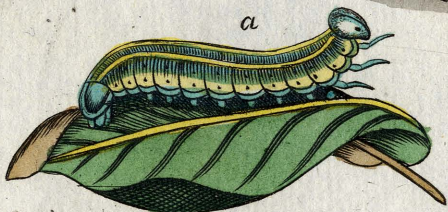






a

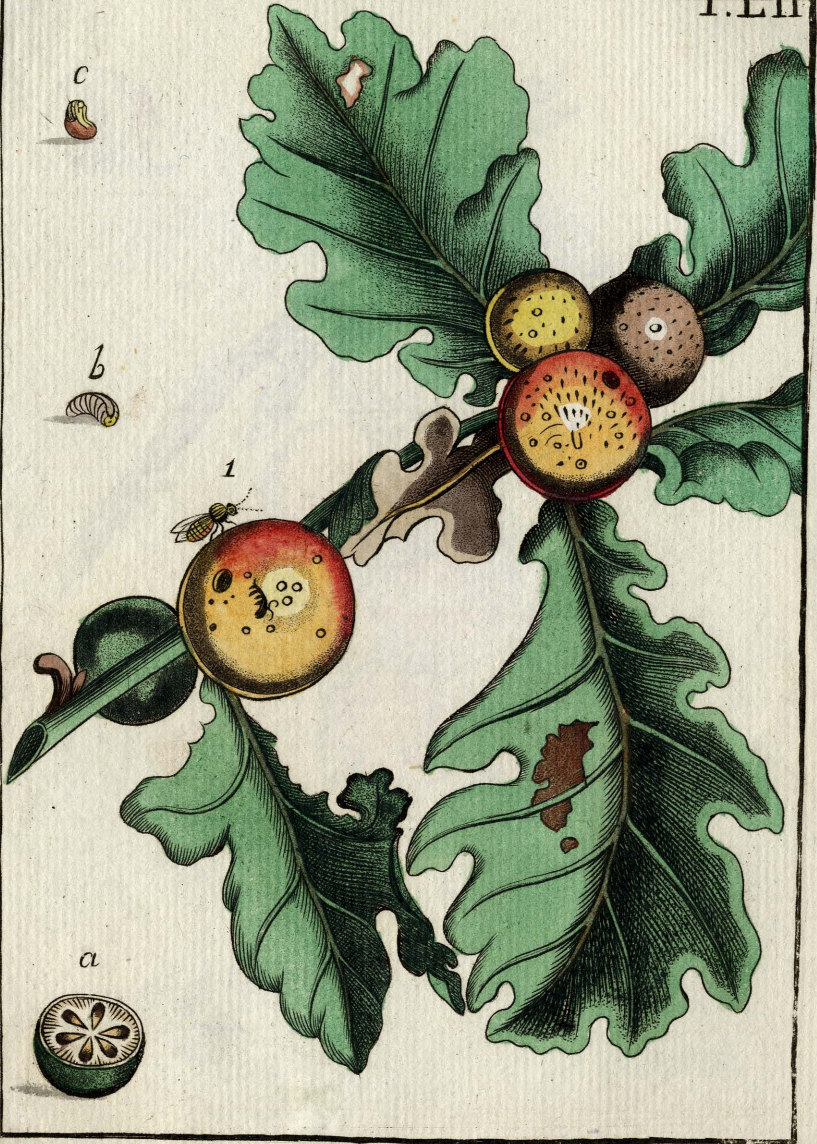






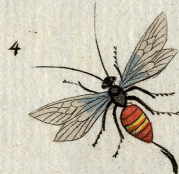
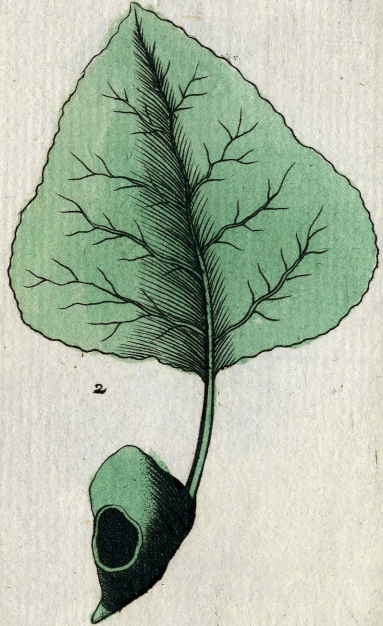


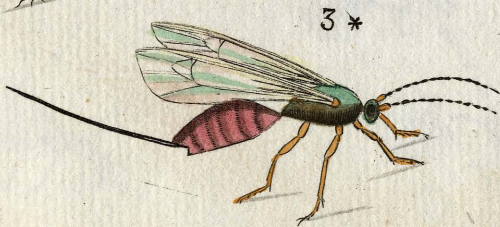


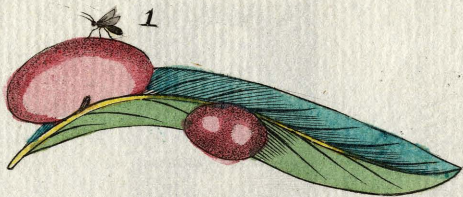












5**



1



2



3



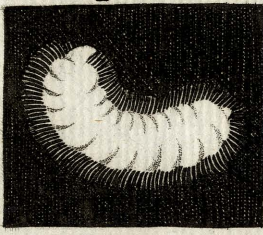
3*



1*



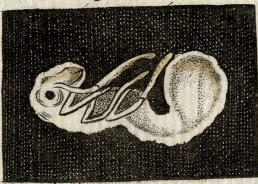
4*



5



5*

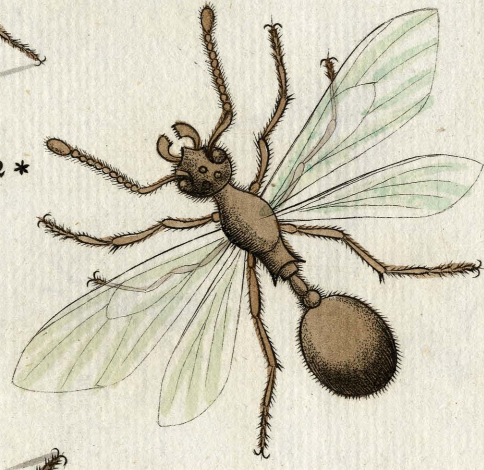


4

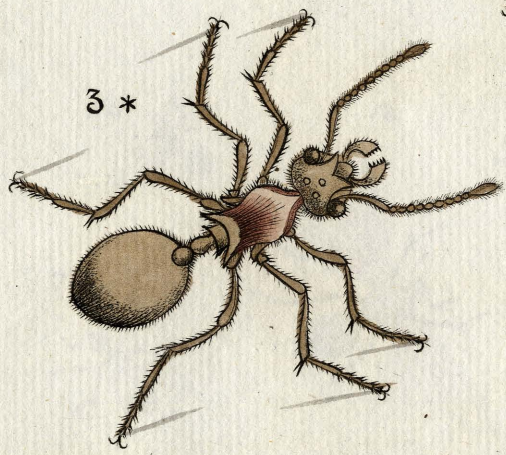


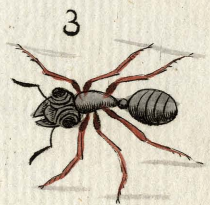


2 *



3 *





2

