

State of Wikimedia Suomi

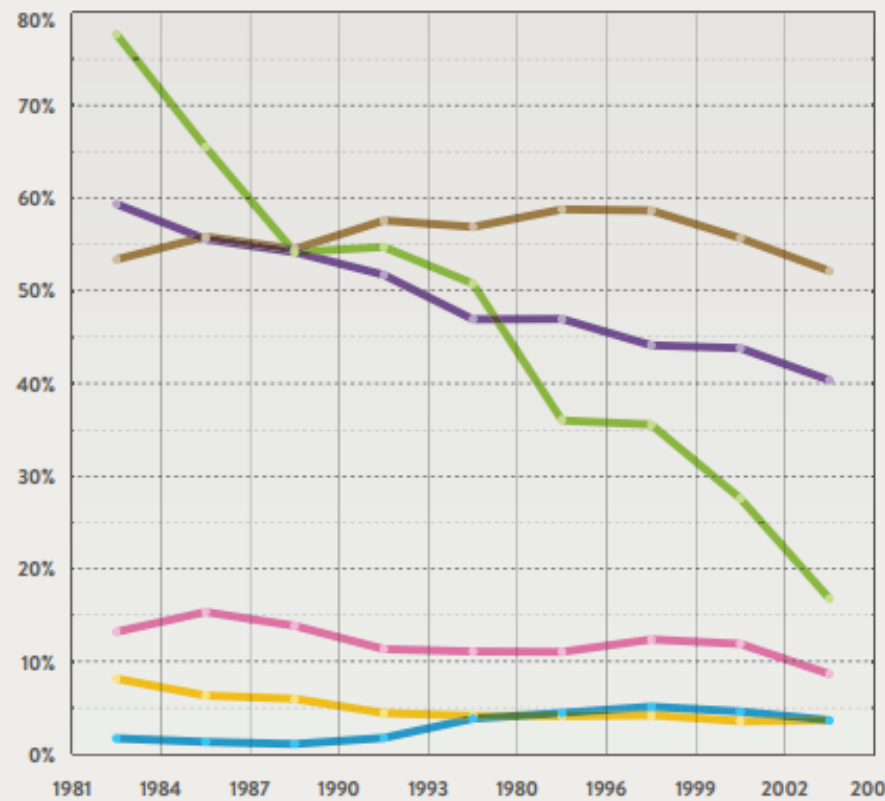
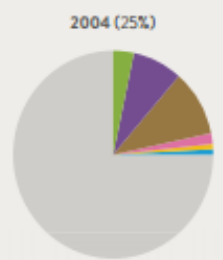
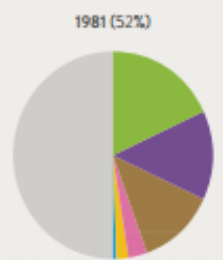


Highlights of 2011

- photography trips to Koli and Fiskars
- univ. infographic course "Illustrate Wikipedia", topic: economy
- GLAM project with Ateneum:
 - part of Ateneum's mission
 - Wikiproject to coordinate
 - 30 new articles

POPULATION LIVING ON LESS THAN \$ 1.25 PER DAY.

TOTAL PERCENT OF POPULATION LIVING ON LESS THAN \$ 1.25 PER DAY.



- EAST ASIA AND PACIFIC
- SOUTH ASIA
- SUB-SAHARAN AFRICA
- LATIN AMERICA AND THE CARIBBEAN
- MIDDLE EAST AND NORTH AFRICA
- EUROPE AND CENTRAL ASIA

POVERTY HEADCOUNT RATIO AT \$ 1.25 A DAY (PPP) (% OF POPULATION).

(year)	(% of pop.)	(poor pop.)	(total pop.)
2005	25.41%	1385.5 M	5452.9M
1999	33.93%	1707.7 M	5032.9M
1993	39.25%	1800.9 M	4589.1M
1987	41.93%	1724.1 M	4112.1M
1981	51.92%	1901.6 M	3662.8M

Extreme poverty is defined as average daily consumption of \$ 1.25 or less and means living on the edge of subsistence.

World Bank defined in 2005 the new figure of \$ 1.25 – purchasing-power parity (PPP).

(Source: World Bank. 2007. World Development Indicators 2007. Washington, DC: World Bank.)

by Tommi Leskinen

Challenges of 2012

- membership and growth has remained low
 - active core remains small
- little or no funding
 - low credibility -> no funding
 - > no projects -> no credibility
 - looking to apply for grant to print localized brochure "Welcome to Wikipedia"